

annual  
report

1999



University  
of Wollongong



28 April 2000

The Honourable John Aquilina, MP  
Minister for Education and Training  
Level 16  
55 Market Street  
Sydney NSW 2000

Dear Minister

In accordance with section 10(i) of the Annual Reports (Statutory Bodies) Act, 1984, and Section 34 of the Public Finance and Audit Act, 1983, the Council of the University has the honour to present to you, for tabling to the Parliament, the Annual Report of the proceedings of the University for the period 1 January to 31 December 1999.

A handwritten signature in cursive script, appearing to read "M. Codd".

Chancellor

A handwritten signature in cursive script, appearing to read "G. R. Austin".

Vice-Chancellor and Principal

## Contacts for Information

Information about the University and its offerings is available from the University's website: [www.uow.edu.au](http://www.uow.edu.au)

Enquiries about courses and subjects, enrolments and other procedures may be directed to:

Wollongong UniAdvice Tel: (02) 4221 3218  
or the relevant Faculty Office via the  
Switchboard Tel: (02) 4221 3555

**Crown Copyright 2000**

**ISSN 0313-6903**

University of Wollongong  
Northfields Avenue Wollongong  
NSW 2522 Australia  
Telephone: (02) 4221 3555  
Facsimile: (02) 4221 3477

All written enquiries should be addressed to the  
Vice-Principal (Administration)  
Office hours Monday to Friday  
Switchboard: 8.30am - 5.30pm



# contents

University Overview	1
Charter	1
Mission	1
Objectives	2
Key Statistics	2
Publications	2
Vice Chancellor's Report	3
University Structure	6
University Management	7
Learning and Teaching	15
University Research	19
Internationalisation	22
Community Service	25
Information Resources	27
Student Profile	28
Student Resources	29
Human Resources	31
Capital Works and Planning	33
Controlled Entities	36
Appendix - Ethnic Affairs	37
Finance Report	40
Financial Statements	50
Index	85



## mission statement

The University of Wollongong aims to explore, develop and apply human and technological capacity for the benefit of its region, the nation and the international community.

# university wollongong

## charter

The University of Wollongong was established and incorporated by an Act of the New South Wales Parliament, The University of Wollongong Act, 1972, and commenced on 1 January 1975. An amending Act, The University of Wollongong (Advanced Education) Amendment Act, 1982, led to the amalgamation of the former Wollongong Institute of Education with the University.

A new Act, The University of Wollongong Act, 1989, came into effect on 1 January 1990. The aims of the University are contained in Section 6 (i) of the Act, which states that the University shall, within the limits of its resources:

- provide educational facilities of university standard, having particular regard to the needs of the Illawarra region;
- disseminate and increase knowledge and promote scholarship; and
- confer degrees of Bachelor, Master and Doctor and award diplomas and other certificates.

The University is governed by the Council, consisting of 18 members: three ex-officio members (the Chancellor, the Vice-Chancellor and the Chairperson of the Academic Senate), four Ministerial nominees, two members elected by Parliament, one member elected by students, three members elected by academic and general staff, four members elected by the Convocation and one member appointed by Council. Council has three major Committees: the Administrative Committee, the Audit Committee and the Ceremonial and Honorary Awards Committee.

The major academic body providing advice to Council on academic matters is the Academic Senate.

# publications

## Information Publications

### Annual Report

The Annual Report provides details of administrative and academic activities, affiliated organisations and financial accounts for the calendar year.

Contact: Secretariat Tel (02) 4221 3360

## Promotional Publications

### Prospectus

The Prospectus provides an outline of degrees and a general overview of the facilities and support services the University offers to prospective students.

Contact: Wollongong UniAdvice Tel (02) 4221 3218

### Outlook

Produced by the University of Wollongong Alumni Association, the Outlook aims to maintain links between the University and its graduates and to assist in networking amongst the Alumni.

Contact: Wollongong UniAdvice Tel (02) 4221 3169

# ew

## university objectives

The University revised its Statement of Objectives at the 1997 Planning conference and they were published in the "University of Wollongong Strategic Plan, 1997 - 2005". The current University objectives are:

### Objectives

- To position the University as an international centre of excellence in scholarship, teaching and research.
- To attract a talented, diverse and motivated student body from both within Australia and overseas.
- To develop a University culture which values and supports diversity, engenders social responsibility, is sensitive to ethical issues and receptive to new ideas and critical enquiry.
- To create an environment within the University community that fosters co-operation, teamwork and collegial relationships.
- To foster an intellectual environment with an international orientation.
- To provide equity of access for those who are qualified to undertake the academic programs of the University.
- To contribute to the social and economic development of its region.

## key statistics


*1999 unless otherwise stated*

Students (head count)	12,901
Staff (full time equivalent)	1,508.18
Degrees and diplomas awarded (1998)	3,199
Total degrees and diplomas awarded since year of foundation	41,907
Faculties	9
Schools	5
Departments (not included in Faculties or schools)	27
Research Institutes	6
Student Residences	6
Controlled entities	5
Wollongong site area (ha)	82.4
Permanent buildings	94
Members of Council (1999)	18
Annual operating revenue (1999)	\$165,849M
Total expenditure (1999)	\$156,104M

# overview



# vice chancellor's report



A university, at its best, is a generator of knowledge and a catalyst for change. Partnerships with the other engines of social change have been part of university tradition and history. Beginning with the Church, the list of partners has grown to include commerce and industry. In August 1999, the University of Wollongong was recognised as the best example in Australia today of a university working with enterprises that will lead the social and technological advances of the next century. In August, the University received the University of the Year Award for "outstanding research and development partnerships".

Our success relies on shared goals, values and effort. UOW was awarded "University of the Year" 1999/2000 for its Outstanding Research and Development Partnerships, both at home and around the world.



The University's partnerships and strategic alliances are mutually beneficial relationships which invigorate and sustain development and growth. They were essential at our foundation nearly 50 years ago when the local community and industry lobbied for the introduction of university studies in the region, helped to shape the early curriculum, provided students and supported fledgling research. The efforts and foresight of university members have built on that early relationship and they are now active partners and leaders at the edge of developments in areas like telecommunications, intelligent materials and smart foods. Our success relies on shared goals, values and effort.

The academic core of the University is fired by the synergy between student-centred learning and research. In 1999, the Faculties' learning and teaching strategies were supported by interactive technologies and by the framework provided by a rigorous Learning and Teaching Plan. The mutual aim was quality and the means were innovation, flexibility and constant review. Some of the outcomes were seen in the accelerated programs in Science, Engineering and Arts for advanced scholars; a tailored program for those who found studies more challenging; flexible delivery and modular subjects and the development of exciting course initiatives linked with TAFE and with private industry. The University's Shoalhaven campus at Nowra and its Access Centres at Batemans Bay and Bega will demonstrate the capability of the flexible delivery mode and the effectiveness of the telecommunications technology. The Shoalhaven campus is expected to be open for its first classes in mid 2000.

The University's international programs are based on the building of relationships between people and institutions. By 1999, the University had formed links with over 140 overseas institutions and enrolled international students at the Wollongong campus, at the Sydney Access Centre, at its Dubai campus and at partner institutions overseas. Five and ten-year investment plans and links with the World Bank, Asian Development Bank, AusAid and the OECD have also been part of the strategic direction of the University for about a decade. A highlight of the year was a unique graduation ceremony held on campus in December. Her Royal Highness Princess Chulabhorn Mahidol, a member of the Thai Royal family, received an Honorary degree in recognition of her achievement as a scientist, her outstanding

contribution to the development and environmental health of her own country and its people and her advocacy to the international community, especially on environmental issues. Her Royal Highness signed a research agreement between the University and her Chulabhorn Research Institute in Thailand – an exceptional example of the University's outreach to overseas partners in research.

The University's research effort itself is at the core of the 1999 award. The University is one of the largest sites of information technology and telecommunications research in the Southern Hemisphere and the State Government has declared Wollongong to be the NSW Centre of Expertise in this innovative field. The sciences and technologies of the future are represented in the University's research portfolio: superconductors, intelligent polymers, steel processing and products and microwave technology. Their "hard edge" is complemented by projects that improve individual and community health, education and development: smart foods, policy development related to social and cultural change in the Asia Pacific region, biomedical research, medical radiation physics and multimedia. Based on its operating budget, the University of Wollongong was the overall best performing university in the country in 1999 for the very competitive Australian Research Council (ARC).

Supporting the high-flying structures of international research are still the basic relationships with the local community outlined in the Community Service chapter of this Report. They go back to our roots as a university in the Illawarra and the creation then of bonds with local people and companies. The highlight of the year in this area was, without doubt, the construction of a new Science Centre. With funding support from the NSW State Government, the exciting new Centre had taken final shape by the end of the year. An interesting architectural feature in itself, the Centre will provide exhibition space and interactive programs that will benefit all the people of the region and beyond and, very importantly, attract children and young people to the wonders and potential of science as both an interest and a career.

The University's achievements are the result of the efforts of staff and students at every level in the organisation. In its administration and

services to students the University achieved a great "leap forward" with enthusiastic leadership and staff commitment. The administration, working with Information Technology Services staff, were able to take the University into a new age of web-based services, most of them developed "in-house" and all at the leading edge in the application of web and other new technologies for immediate and faster access and feedback.

Many University members have shown themselves to be the people of enthusiasm and vision and the University acknowledges their essential contribution to its success. Some individuals stand out, like Glen Moore, the Director of the Science Centre, whose persistence has been essential to its success; the winners of the 1999 Vice-Chancellor's Awards and extraordinary students like Kirsten Benkendorff, who was named the Young Australian Scientist of the Year (1999/2000).

The leadership structure of the University remained comparatively unchanged during the year. However, our extremely capable and highly regarded Pro Vice-Chancellor (Research), Professor Bill Lovegrove, left to become Deputy Vice-Chancellor at Griffith University. Professor Lovegrove's guidance and statesmanship was critical to the University's remarkable research achievements over the last decade. We welcomed his successor, Professor Chris Brink, a leader in research from South Africa, to the senior executive in May. Professor Brink has already completed a review and restructure of research management to take it to the next stage of development.

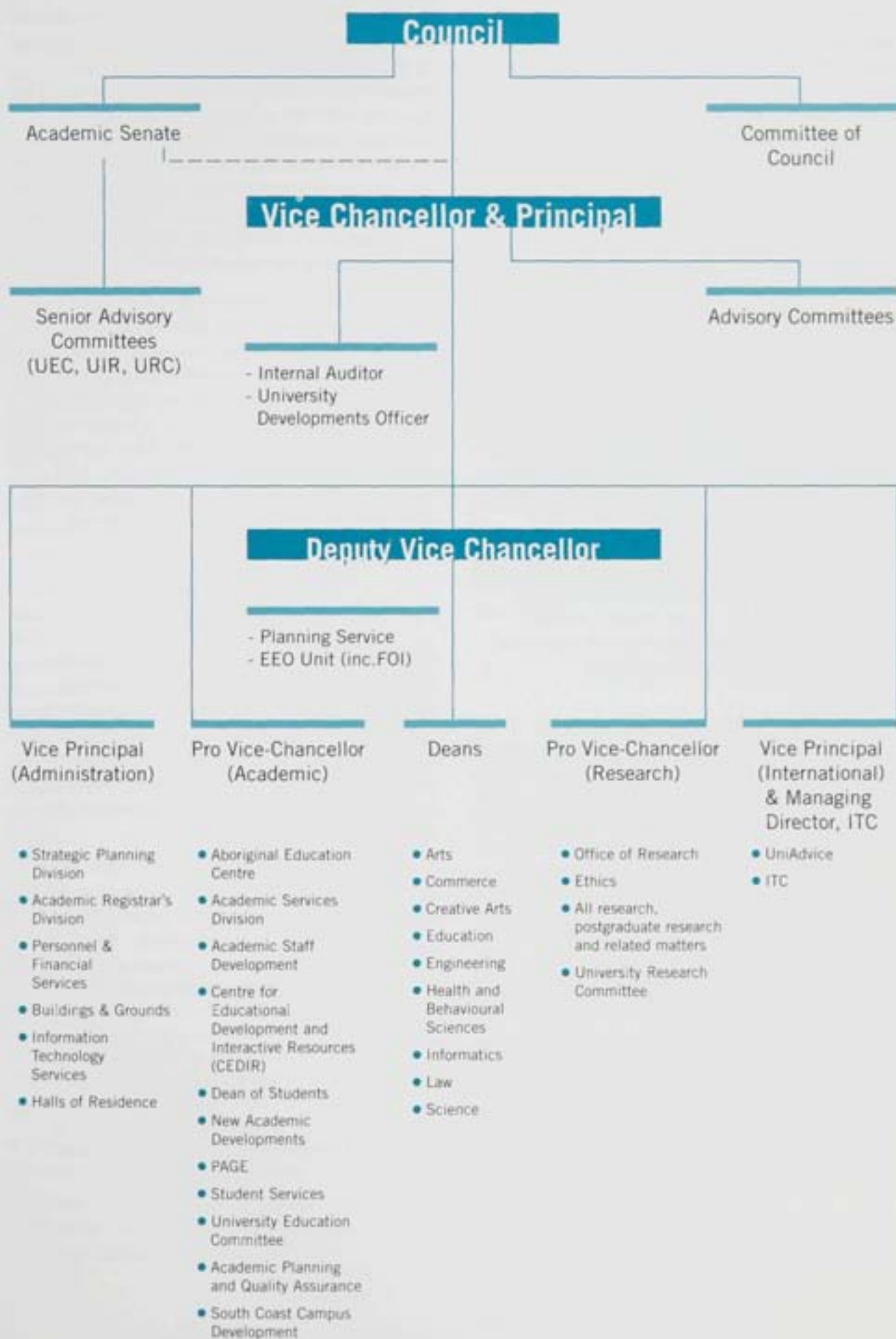
The celebration of the accolades for 1999 was affected, unfortunately, by continuing concerns about the direction of Federal Government policy on university funding and the associated industrial trouble on this and many other campuses. Despite this industrial climate, 1999 has to be seen as a landmark year for the University of Wollongong and one from which we can develop further as a university attuned to the emerging trends and the needs of the 21st century. Those integral partnerships were and remain the key to our development. A very important partnership, however, sadly ended in the last half of the year. Dr Robert Hope, our foundation Chancellor, died in October.

A great Chancellor and a great Australian, Dr Hope's contribution was summed up in an announcement to the campus which acknowledged that "the University of Wollongong has lost a part of its living history with the death of Robert Hope. His legacy can be seen in the University's achievements and, particularly, in its reputation for both excellence in academic performance and care for its students. We can be grateful that Dr Hope was given time to be able to see and share in the University of the Year Award recently presented to the University of Wollongong".

The University Council met in Sydney on 22 October 1999 so that members could attend Dr Hope's memorial service. It was an occasion for the celebration of a life of service, integrity and dignity. It was also a time to reflect on the power of a keen intellect, a genuine compassion for others and a warm sense of humour. We can only trust that the University he helped to establish can nurture the same sorts of values and attitudes into the new century.

Gerard Sutton  
*Vice-Chancellor*

# University structure



## 1999 Organisational Highlights

The University's organisational structure remained stable and effective in 1999. The University Council of 18 members continued to assess and approve the policy directions of the University. Council took an active interest in equity issues, in the difficult industrial scene at Wollongong and other university campuses and in the use of University resources in the current funding climate. Council was briefed regularly on the University's Year 2000 and GST projects. Although the concerns of the global community did not, for the most part, eventuate, Council acknowledged the thoroughness of the University's Y2K project and its benefits for future organisational planning. The GST project continued into the new year with regular reports to Council.

A new General Staff representative, Mr Brian Webb, joined Council at the beginning of the year. The NSW Parliament reappointed Mr Colin Markham MLA and appointed The Hon Mr Peter Primrose MLC to replace The Hon Rev Fred Nile. Ms Kerrie Christian and Mr John Steinke were re-elected unopposed as Convocation members and, at the end of the year, Ms Melanie Jackson was elected to replace Ms Ann Butler as the Student member. Council reappointed Dr Brian Hickman for another term under Part 3, Section 9 (6) of the University Act.

Council's Administrative Committee focussed strongly on the University's investment strategy in 1999 and continued to monitor Occupational Health and Safety issues. Under delegated authority from Council, the Committee approved the new Travel and Entertainment Policy.

The senior academic body, the Academic Senate, reviewed its membership structure during the year and adjustments were made to ensure equitable Faculty representation. The topics given close attention on Senate's agenda included the undergraduate Indigenous Health course, the Disability Action Plan, the Code of Practice-Supervision, the Children on Campus Policy, and the procedures for E-mail Submission of Assignments. Senate's Standing Committee refined its role as a quality arbiter of course and subject proposals, examining over 60 course proposals (both new programs and minor amendments) during the year.

The three academic Senior Advisory Committees continued to identify improvements in quality and in service to students well during the year. The University Education Committee, having set in place a range of educational policy guidelines and policies,

reassessed its own role and the operation of the Faculty Education Committees. The Internationalisation Committee completed reviews of advanced standing and articulation and international student English language requirements. The Research Committee undertook a major review of its structure under the new Pro Vice-Chancellor (Research), Professor Brink, to accommodate changes in the research environment and to respond positively to the Commonwealth Government's policy paper "Knowledge and Innovation". The Committee looked particularly at the need for strategic planning, research training and innovation.

One major change in the University's Faculty structure was submitted for approval at the end of the year. After an intensive internal review, the Faculty of Engineering recommended a change from a Department-base to an inclusive program-based structure. The Faculty's objective is to remove artificial barriers to study and research, to invigorate courses and to streamline administration. This initiative will bring to four (out of nine) the number of Faculties which have adopted an integrated faculty structure.

## Review of Operations

The University's Review Procedures for Academic Units assess management practices, academic programs, research, and facilities and equipment. Academic unit reviews were postponed in 1999 pending the implementation of the Academic Performance Reviews (see below) which are expected to pinpoint, more accurately than previously, the academic area requiring review.

The Course Structures Working Party of the University Education Committee began its review of rules and practices affecting the experience and progress of students in the University. This major educational initiative aims to achieve simpler, more responsive procedures and a shedding of outdated processes.

In administrative operations, reviews of policies on purchasing, use of corporate credit cards, travel and entertainment, staff and financial delegations resulted in new or revised policies at the end of the year. A review of records management was also initiated.

## Measures and Indicators of Performance

Two major appraisal and planning exercises took place in 1999: Academic Performance Reports and Staff Appraisals.

In the academic sector, the statistics and preliminary analyses for the prototype Academic Performance Reports were introduced to provide Faculties with comprehensive planning information and with a basis for assessing their performance. The Faculties proceeded to complete their commentary on the key performance indicators to produce Five-year Faculty Rolling Plans and an annual action plan. The process is expected to be refined in the new year. At an individual level, Teaching Performance continued to be evaluated in student and peer surveys. The Vice-Chancellor's Award for Outstanding Contribution to Teaching and Learning recognised planning and evaluation initiatives as well as actual teaching practice. A staff feedback survey on the performance of all academic supervisors was conducted during the year and the results provided to the individuals concerned.

The annual appraisal procedures for all administrative staff were also implemented. Linked to objectives in divisional business plans, the appraisals are conducted by interview after preparation of personal appraisals and development plans. Exceptional staff performance was rewarded in the Outstanding Service Awards for General Staff and, as reported in the Human Resources section, a general staff leadership development program was pioneered and, building on its success, a similar program is planned for academic staff in 2000.

## Management Improvement Plans and Achievements

Significant and innovative improvements in management systems and practices were especially notable for their use of the latest technology. The Academic Registrar's Division introduced a raft of initiatives aimed at improving services to Faculties and students, including:

- Conversion from paper-based to web-based enrolment and re-enrolment systems.
- Introduction of a Class Management package to assist in monitoring class composition, recording marks and transmitting grades.

- Production of a free Student Guide to the University's Rules, practices and sources of information.
- A web-based Subject Database to facilitate sound enrolment choices.
- Re-engineering the core data about courses and subjects to minimise errors, inconsistencies and duplication of effort.

All services in the Buildings and Grounds Division were benchmarked for cost and quality and improvements made to meet the benchmarks. A commitment to these benchmarks was incorporated into a new enterprise agreement.

The Y2K computer problem was managed without any incident by a steering committee led by Information Technology Services. The exercise allowed the University to make a detailed assessment of the scope and reliability of its information technology infrastructure and to implement improved disaster recovery and business continuity procedures.

A project team, based in Personnel and Financial Services was established in mid 1999 to prepare the University for the impact of the new Goods and Services Tax.

## Problem Areas and Solutions

Industrial action, taken in the face of the lack of Federal Government supplementation for salary increases, emerged as a problem area for 1999. Strike action threatened to undermine key activities such as the release of examination grades, the first December Graduation ceremonies and Open Day. The University managed to avoid major disruption by making an extra effort to ensure that students and the public were not disadvantaged.

The Faculties did not identify many specific problems for 1999; some illustrative examples and strategies to resolve them are listed below:

- A reduction in overseas, international students studying in the Faculty of Arts. Strategy: to increase the number of Study Abroad students.
- The imbalance in student distribution across a range of Arts disciplines resulting in uneven use of staff resources. Strategies: to reconfigure the Arts degree and retrain staff where possible.
- The fall in international student numbers in the Faculty of Commerce in 1998. Strategy: improved

marketing and processing of applications, increased direct contact with individual institutions and improved advanced standing arrangements.

- Developing strong executive and postgraduate markets in the corporate business area. Strategy: improved facilities in Sydney.
- Contracting domestic resource base in the Faculty of Education. Strategies: seek alternate sources of funds through international full-fee programs; explore alternate modes of delivery; delivery of more generic components (modules) in pre-service teacher education programs.
- Development of flexible course material in Education suitable for off-shore presentation. Strategies: free up staff to allow developmental time; liaise with visiting international scholars and seek their assistance in this regard.

## Client Service

### Guarantee of Service

The University is committed, through its various policies to the provision of quality services to all of its clients, both internal and external. It is progressively implementing a framework of continuing assessment, review and improvement of these services.

### Service Improvements

The introduction of improved services to students was the core focus in 1999. The Academic Registrar's Division was particularly proactive this year and many of their initiatives are outlined under Management Improvements above. One very popular change was the introduction of new graduation timetables. The first December Graduation ceremonies were held at the end of 1999 and student response was very positive with participation increasing from 66% to over 90%. Next year will see the introduction of July ceremonies as well, thus allowing eligible students to graduate immediately after the mid-year or November examination periods.

### Consumer response

While the University has had a history of seeking feedback from students, extra feedback was sought during 1999 to ensure that new services such as the re-enrolment over the internet and the new graduation timetables were working successfully for our students.

Surveys conducted, via the web and more traditional means, included:

- Graduate Destination Survey
- Postgraduate Research Experience Survey
- Survey of Educational Needs in the Wingecarribee Shire
- UniCentre Satisfaction Survey
- Student Survey (1999/2000)

Internal assessment of services also continued with areas such as cleaning, occupational health and safety, personnel and maintenance services all being evaluated using our standard internal survey instrument.

## Legislation

There was no change to University legislation in 1999 but, as noted above, a number of University projects were given impetus by the introduction of state legislation such as the State Records Act and federal legislation such as the introduction of GST. The NSW Privacy and Personal Information Protection Act is also expected to have ramifications in the practices of Wollongong and other universities during 2000.

## Code of Conduct

The University's Code of Conduct is designed to convey the obligations and standards of behaviour expected of University staff and to help staff resolve any ethical issues that may arise during the course of their duties.

The University follows several "guiding principles" in pursuit of its objectives, most importantly consideration and support for the professional development, intellectual and cultural needs of the staff and the student body.

The University is accountable to its staff, students, the public and governments. It is in the interests of all members of the University to maintain the highest possible ethical standards including accuracy, honesty, cooperation, tolerance and acceptance of obligations as well as rights.

The University is committed to the principles of equal opportunity and encourages staff to pursue excellence in all aspects of their activities.

The development of an ethical environment relies on each person taking responsibility for his or her own behaviour after considering state and federal law, the University's stated values, the provisions of its codes and policies and the advice of senior staff.

The University's policies and guidelines provide the

structural framework for the Code (see headings below) and are referred to throughout the text.

- Conflicts of Interest, including close personal relationships and financial interests;
- Close Personal Relationships
- Financial Interest
- Acceptance of gifts or benefits
- Discrimination and harassment
- Occupational Health and Safety
- Public comment
- Protecting confidential information
- Electronic communication and information
- Use of official facilities and equipment
- Secondary employment
- Intellectual Property
- Copyright
- Reporting corrupt conduct, maladministration and serious and substantial waste of public resources

The Code of Conduct was developed during 1999 and is currently being approved by the University's major committees.

## Freedom of Information

Under the provisions of the New South Wales Freedom of Information (FOI) Act, 1989, the University is required to provide the public and individuals with reasonable access to information concerning the University's policies and practices and to give individuals reasonable access to information the University holds on them while maintaining privacy rights. A significant amount of organisational information is available for general access electronically on the world wide web. Work has continued in 1999 in upgrading the university web site to provide easier access.

Three or less FOI applications are usually processed annually. In 1998 this number rose significantly with nine applications being lodged. In 1999 there were three applications and nine informal requests for personal information, which were granted without recourse to the Act. The peak of activity in 1998 is attributed to a FOI and privacy training program conducted for all staff in that year.

## Freedom of Information Applications

Section	Title	Total
<b>Section A</b>	<b>Numbers of New FOI Requests</b>	
A1	New (including transferred in)	2
A2	Brought forward	1
A3	Total to be processed	3
A4	Completed	3
A7	Total Processed	3
<b>Section B</b>	<b>Result of FOI Requests</b>	
B1	Granted in full	3
B5	Completed	3
<b>Section C</b>	<b>Ministerial Certificates</b>	
<b>Section D</b>	<b>Formal Consultations</b>	
D1	Number of requests requiring formal consultation(s)	3
<b>Section E</b>	<b>Amendment of Personal Records</b>	
<b>Section F</b>	<b>Notation of Personal Records</b>	
<b>Section G</b>	<b>FOI Requests Granted in Part or Refused</b>	
<b>Section H</b>	<b>Costs and Fees of Requests Processed</b>	
H1	All completed requests Assessed Cost - \$90 FOI fees received - \$30	
<b>Section I</b>	<b>Discounts Allowed</b>	
I2	Financial Hardship - Pensioner/Child \$60	
I4	Totals - \$60	
<b>Section J</b>	<b>Days to Process</b>	
J1	0-30 days	
J4	Totals	
<b>Section K</b>	<b>Processing Time</b>	
K1	0-10 hours	
K3	Over 20 hours	
K4	Totals	
<b>Section L</b>	<b>Reviews and Appeals</b>	
L2	Number of Ombudsmen Reviews Finalised	

\* Sub-categories not shown under Sections A-L had nil (0) entries

\*\* All applications were personal

## Equal Employment Opportunity

The University of Wollongong achieved best practice rating with the Affirmative Action Agency in 1999. This rating provides a national and external benchmark against all employers from both the private and public sector with more than 500 employees. The achievement is the culmination of two years work of the Equal Employment Opportunity/Affirmative Action (EEO/AA) Committee and the Equal Employment Opportunity (EEO) Unit. All targets set by the EEO/AA Committee have been met or exceeded. The staff profile for 1999 demonstrates increased representation in all equity target groups.

The grant application for a \$55,000 project, Surfing Diversity: Improving Community Relations in the Illawarra, under the Federal Government's Living in

Harmony Program, was successful and activities commenced in late 1999. EEO accountabilities were incorporated into Faculty Performance Reports which were then incorporated into the five year planning process at Faculty level.

A range of surveys was conducted to gain employee views and to evaluate organisational progress in a number of equity areas. They included a Pregnancy and Work survey, an EEO Policy Awareness survey and all women who had attended affirmative action programs over the last 3 years were surveyed to evaluate the programs and monitor career outcomes. The results of all surveys were positive particularly the 94% of staff who indicated they were aware of the University's EEO/AA policy.

LEVEL	Salary Band \$ From - To	TOTAL STAFF	Subgroup as Percent of Total Staff at each Level							
			Number Staff responding to EEO data form (Respondents)	Men	Women	Aboriginal & Torres Strait Islander People	People from Racial, Ethnic, Ethnic- Religious Minority Groups	People Whose Language First Spoken was not English	People with a Disability	People with a Disability Requiring Adjustment at Work
<b>Percent of Total Academic Staff by Level</b>										
Level A	\$33,548 - \$45,528	73	77%	60%	40%	0%	54%	30%	7%	0%
Level B	\$47,925 - \$56,911	187	84%	53%	47%	1.3%	31%	27%	7%	3%
Level C	\$58,707 - \$67,694	172	80%	70%	30%	1.4%	26%	25%	16%	8%
Level D	\$70,689 - \$77,876	96	75%	84%	16%	0%	29%	21%	11%	7%
Level E	\$91,056+	67	85%	85%	15%	0%	26%	18%	14%	4%
<b>TOTAL</b>		<b>595</b>	<b>81%</b>	<b>68%</b>	<b>32%</b>	<b>0.8%</b>	<b>31%</b>	<b>25%</b>	<b>11%</b>	<b>5%</b>
<b>Percent of Total General Staff by Level</b>										
Level 1/2	\$23,453 - \$27,984	162	83%	33%	67%	0.2%	24%	15%	8%	4%
Level 3	\$26,650 - \$30,649	109	83%	34%	66%	1.1%	30%	12%	6%	2%
Level 4	\$30,649 - \$33,314	131	86%	21%	79%	2.7%	17%	11%	4%	2%
Level 5	\$33,314 - \$38,644	87	85%	41%	59%	1.4%	16%	14%	12%	4%
Level 6	\$38,644 - \$42,642	132	83%	62%	38%	0%	28%	14%	9%	5%
Level 7	\$42,642 - \$47,972	66	85%	55%	45%	0%	32%	27%	13%	7%
Level 8/9	\$47,972 - \$55,966	61	87%	20%	80%	0%	5%	4%	2%	1%
Level 10+	\$59,964 And above	32	97%	72%	28%	0%	6%	6%	13%	3%
<b>TOTAL</b>		<b>792</b>	<b>85%</b>	<b>42%</b>	<b>58%</b>	<b>1.2%</b>	<b>24%</b>	<b>15%</b>	<b>9%</b>	<b>4%</b>
<b>Percent of Total Academic Staff by Employment Basis</b>										
Resortable Full Time		391	82%	70%	30%	0.6%	28%	22%	12%	6%
Fractional		19	79%	37%	63%	0%	20%	20%	13%	0%
Contract Full Time	< 1 Year	29	76%	72%	28%	9.1%	50%	50%	5%	3%
	1 - 3 Years	89	79%	71%	29%	0%	34%	27%	10%	3%
	3+ Years	27	85%	63%	37%	0%	52%	43%	4%	0%
Fractional	< 1 Year	12	92%	50%	50%	0%	18%	18%	18%	0%
	1 - 3 Years	21	70%	48%	52%	0%	38%	19%	0%	0%
	3+ Years	7	86%	86%	14%	0%	33%	33%	17%	0%
Casual**		198	-	41%	59%	-	-	-	-	-
<b>TOTAL</b>		<b>1071</b>	-	<b>47%</b>	<b>53%</b>	-	-	-	-	-
<b>Percent of Total General Staff by Employment Basis</b>										
Resortable Full Time		437	84%	32%	68%	0.7%	24%	15%	9%	4%
Fractional		150	89%	12%	88%	0%	27%	14%	8%	4%
Contract Full Time	< 1 Year	33	92%	89%	11%	11.1%	11%	11%	0%	0%
	1 - 3 Years	41	87%	54%	46%	3.0%	18%	18%	9%	0%
	3+ Years	11	100%	82%	18%	0%	0%	9%	27%	18%
Fractional	< 1 Year	22	84%	36%	64%	0%	20%	0%	7%	2%
	1 - 3 Years	15	87%	40%	60%	7.7%	23%	15%	8%	0%
	3+ Years	1	100%	0%	100%	0%	0%	0%	100%	100%
Casual**		148	-	44%	56%	-	-	-	-	-
<b>TOTAL</b>		<b>2260</b>	-	<b>44%</b>	<b>56%</b>	-	-	-	-	-

\* Casual staff numbers reflect employment in the period 1/7/98 - 30/6/99

\*\* Casual staff numbers include part-time teachers (including full-time & part-time staff paid for doing casual teaching), practice-teaching supervisors, clinical supervisors, dean supervisors, general staff casual employment & miscellaneous one off payments for services.

## Ethnic Affairs Report

One of the articulated attributes of a Wollongong graduate is "an appreciation and valuing of cultural and intellectual diversity and ability to function in a multi-cultural or global environment".

The following initiatives have been implemented to support development of academic skills in the area of cultural diversity.

- All new teaching staff are required to attend the Introduction to Tertiary Teaching program which includes course work on working with a culturally diverse student body.
- The Learning Resource Centre provides academic skills workshops. An Academic Support program has been established at Faculty level to assist students from non-English speaking backgrounds with discipline specific academic learning and language.
- A Working Party prepared a report for Senate, the peak academic committee, on English language requirements and linked support programs.

Campus and broader community awareness of culturally sensitive issues have been encouraged through public forums and media releases. More than 60 items of university news, most of which had accompanying images portraying a culturally diverse campus, were released in 1999.

In 2000, a number of projects linked to the Living in Harmony theme will be undertaken including research on attitudes to cultural diversity at this University, information kits and a range of community-based activities promoting cultural diversity (ie public lectures with high profile speakers, art competitions, a presence at community celebrations, community groups and international students working on joint projects). Other ongoing strategies are detailed in the Ethnic Affairs Priority Statement (EAPS) workplan in the appendix, p.37.

## Principal Officers for 1999

### Chancellor

Mr Michael Codd AC, BEc (Hons) Adel

### Deputy Chancellor

Mr George Edgar, BSc UNSW FAIM

### Vice-Chancellor & Principal

Professor Gerard R Sutton, BE MEng Sc UNSW, PhD CUA

### Deputy Vice-Chancellor

Professor Peter Robinson, BSc(Hons) PhD DSc Wales

### Pro Vice-Chancellor (Academic)

Professor Christine E Ewan, MB BS MA PhD Syd, FAFPHM

### Pro Vice-Chancellor (Research)

Professor Chris Brink, MSc Camb, MA Camb, PhD Camb, DPhil Rand Afrikaans

### Vice-Principal (Administration)

Mr David W Rome, BSc MSc W Aust

### Vice-Principal (International) & Joint Managing Director, Illawarra Technology Centre

Mr James Langridge, BBus UTS, Dip Tertiary Ed NE, MACS

### Dean of Faculty of Arts

Professor Anne Pauwels, LicGermanic Phil, GradDip Higher Ed Antwerp, MA PhD Monash

### Dean of Faculty of Commerce

Professor Gill Paimer, BSocSc(Hons) Birm, MSC LSE, PhD City UK, FAIM, FAHRI

### Dean of Faculty of Creative Arts

Professor Sharon Bell, BA PhD Syd

### Dean of Faculty of Education

Professor John Patterson, MSc Oregon, Med Syd, EdD N Colorado

### Dean of Faculty of Engineering

Professor Brendon A Parker, BSc (Eng) ARSM, DIC, PhD Lond FMI, FIEAust, CPEng, CEEng

### Dean of Health and Behavioural Sciences

Professor Len Storlien, BSc Lethbridge, MA BRCol, PhD ANU

### Dean of Faculty of Informatics

Professor Ah Chung Tsoi, MSc, PhD Salford, BD, FIE Aust, SMIEEE, CPEng

### Dean of Faculty of Law

Associate Professor Robin Handley, LLB Warw, LLM ANU

### Dean of Faculty of Science

Professor Robert K Norris, DIC Lond, BSc PhD DSc Syd, FRACI CChem

### Dean of Students

Ms Josephine Castle, BA Syd, MA Warw

### University Librarian

Ms Felicity McGregor, BADipLib UNSW, AALIA

### General Manager, UniCentre

Mr Nigel Pennington, BA

### EEO Officer

Ms Christine Hayward, BA Macq, Dip Admin WStd

University Council

(Membership as at 30 December 1999)

**Elected by the Legislative Council**

The Honourable Peter Primrose

**Elected by the Legislative Assembly**

Mr Colin Markham, MP

**Ministerial Nominees**

Mr George Edgar, BSc UNSW FAIM

Mr Kerry Kyriakoudes, BLaws Syd

Ms Sandra McCarthy, DipTeach STC, GDip UOW

Mr Joe Scimone, BEng GDip MBA UOW

**Ex Officio**

The Chancellor: Mr Michael Codd AC

The Vice-Chancellor & Principal:

Professor Gerard R Sutton, BE MEng Sc  
UNSW, PhD CUA

The Chairperson of the Academic Senate:

Professor Robert G Castle MEd Syd

**Appointed by Council**

Dr Brian Hickman, BSc MSc DSc Melb

**Elected by the Students of the University**

Miss Melanie Jackson, BE(Hons), BMath UOW

**Elected by Convocation**

Ms Kerrie Christian, BMet

Ms Shirley Nixon, BA

Ms Susan Chapman, DipHealthAdmin C Sturt, BA,  
MBA UOW

Mr John Steinke, BA, MA, Calif

**Elected by the Full-time Academic Staff of the University**

Mr Michael Morrissey, BA Manc, MSc Notts

Ms Ann Hodgkinson, BCom Qld, MEd Adel

**Elected by the Full-time General Staff of the University**

Mr Brian Webb, B. Soc. Stud. Syd

Council Attendance 1999

	Possible	Attended	Apology/ Leave
<b>Ex-Officio</b>			
Mr Michael Codd	6	6	-
Professor Gerard R Sutton	6	6	-
Professor Robert J Castle	6	5	1
<b>Elected by NSW Legislative Council</b>			
The Hon Rev Fred Nile, MLC	6	4	2
<b>Elected by NSW Legislative Assembly</b>			
Mr Colin Markham, MP	6	1	5
<b>Ministerial Appointees</b>			
Mr George Edgar	6	1	5
Mr Kerry Kyriakoudes	6	4	2
Ms Sandra McCarthy	6	4	2
Mr Joe Scimone	6	3	3
<b>Appointed by Council</b>			
Dr Brian Hickman	6	5	1
<b>Elected by Convocation</b>			
Ms Kerrie Christian	6	5	1
Ms Shirley Nixon	6	5	1
Ms Susan Chapman	6	6	-
Mr John Steinke	6	5	1
<b>Elected by the Students of the University</b>			
Ms Ann Butler	6	5	1
<b>Elected by the Full-time Academic Staff of the University</b>			
Mr Michael Morrissey	6	3	3
Ms Ann Hodgkinson	6	6	-
<b>Elected by the Full-time General Staff of the University</b>			
Mr Brian Webb	6	6	-

## Major Advisory Committees

### University Education Committee

#### Chairperson

Professor Christine Ewan, Pro Vice-Chancellor  
(Academic)

#### Deputy Chairperson

Ms Josie Castle, Dean of Students

#### Ex-Officio Members

Professor Rob Castle, Chair of Academic Senate  
Associate Professor Grahame Morris, UEC Technical  
Adviser

#### Elected Members

Professor Michael Gaffikin  
Mr Damien Considine  
Ms Di Kelly  
Ms Tracey McDonald  
Associate Professor John Montagner  
Professor Graham Winley

#### Co-opted Members

Dr Patrick Crookes  
Associate Professor Nita Temmerman  
Associate Professor Sandra Wills

#### Student Member

Mr David Eden

### University Research Committee

#### Chairperson

Professor Chris Brink, Pro Vice Chancellor  
(Research)

#### Ex Officio Members

Professor Rian Dippenaar  
Professor Shi Xue Dou  
Professor Andrew Wells  
Professor Gordon Wallace  
Associate Professor Tim Turpin  
Professor Joe Chicharo  
Professor Anne Pauwels  
Professor Gill Palmer  
Professor Sharon Bell  
Professor John Patterson  
Professor Brendon Parker  
Professor Len Storlien  
Professor Ah Chung Tsoi  
Associate Professor Robin Handley  
Professor Rob Norris  
Mr Damien Cahill  
Mr Aapo Skorulis

#### Elected Members

Associate Professor Brian Martin  
Professor John Bern  
Professor Michael Gaffikin  
Associate Professor Stephen Ingham  
Associate Professor Barry Harper  
Dr Jan Wright  
Professor Hugh Brown  
Dr Ric Morris  
Dr Lee Astheimer  
Associate Professor Rod Nilsen  
Professor Andrew Frazer  
Associate Professor Margaret Sheil  
Dr Bill Buttemer

#### Appointed Members

Dr Sharon Nightingale  
Associate Professor Liz Fulop

### University Internationalisation Committee

#### Chairperson

Professor Rob Castle, Director, International  
Programs

#### Ex-officio Members

Professor Chris Brink  
Professor Christine Ewan  
Mr Jim Langridge  
Mr Peter Day  
Ms Gillian Luck  
Ms Kaye Cox

#### Members Elected by Academic Senate

Professor Ah Chung Tsoi  
Professor John Bern

#### Student Members

Mr Kane Gleeson  
Ms Sarah Le Breton

#### Faculty Internationalisation Officers

Professor John Glynn  
Mr David Vance  
Dr Christine Fox  
Associate Professor Wee King Soh  
Dr Barbara Meyer  
Associate Professor Graham Williams  
Dr Charles Chew  
Professor John Morrison

#### Co-opted Members

Associate Professor Sandra Wills  
Dr Grahame Morris

## Objectives

To position the University as an international centre of excellence in scholarship and teaching.

To provide quality degrees that maximise the opportunity for graduate employment and to maintain high levels of student satisfaction through quality, innovative and flexible teaching and learning practices.

# learning & teaching



Courses, teaching and research at UOW are gearing for the flexible learning environment of a communications and information society - UOW is one of the largest sites of IT and telecommunications in the Southern Hemisphere.



## Plan and Structure

The University's Learning and Teaching Strategic Plan has three major operational components: the University Education Committee (UEC), Faculty Education Committees (FECs) and Academic Services Division. In 1999, the UEC continued to provide policy and guidance; the FECs were responsible for implementation within the Faculties; and Academic Services Division provided advice and support. The areas of focus were systematic quality assurance, supporting educational innovation in Faculties and providing appropriate career development support for academic staff.

Teams in the area of Tertiary Literacies continue to make significant progress in the integration of generic skills into the curricula. Other areas involving collaboration include careers liaison, career management, English Language liaison, University access programs and TAFE articulation.

## Achievements for 1999

### Educational Quality Assurance

The first draft of a major academic performance report was prepared for each Faculty to assist them in preparing their Five Year Rolling Academic Plans and to act as a source document for both internal and external reporting. This will be continually refined in 2000. A quality assurance process was successfully introduced for production of flexible delivery materials and a Subject-On-line Survey (SOS) was developed for evaluation of subjects.

Some Codes of Practice and educational policies and procedures were reviewed and refined as part of an ongoing process.

The role of Faculty Education Committees in implementing and taking a lead in the development of quality assurance mechanisms continued to be strengthened.

### Staff Development

The Introduction to Tertiary Teaching Program (ITT) continued to provide a good grounding for new staff and tutor training programs were run for the new South Coast campuses. The library continued to provide support in the use of and access to electronic resources.

1999 saw the first recipients of a team award (as well as one for an individual award) for excellence in

teaching. Other incentive programs continuing in 1999 were the Educational Strategies Development Fund and a Teaching Fellowship.

### Communication and Networking

The UEC and one of the major working parties provides regular electronic newsletters to all staff on its activities. "Overview" magazine and a series of presentations showcased the work of the nominees for the Vice-Chancellor's Outstanding Contribution to Teaching And Learning (OCTAL) Awards.

### Curriculum Issues

The compulsory information literacies introductory program subject (ILIP100) was expanded to cover statistical literacy and work continued on integrating tertiary literacies and increasing use of alternate delivery modes and locations through the Tertiary Literacies Liaison Officers (TLLOs), and Flexible Delivery Officers and units of Academic Service Division.

Students are also now able to acquire an international studies minor as part of the internationalisation of the curriculum.

The UEC established a Course Structures and Procedures Review Working Party to undertake a review of specific issues. The underlying philosophy of the review is to make the system more student-focused and flexible while still maintaining academic integrity.

### Student Issues

A policy to address international student English language requirements was developed for implementation by the Internationalisation Committee.

A number of enhancements were made to student systems, particularly web-based access for students.

## Major Priorities for 2000

A number of factors, both in the internal operations of the University and the UEC and in the external environment, resulted in a review of the UEC structure and activities.

One of the major external influences will be a requirement for all Universities to be audited on a five yearly basis by a national Quality Assurance Agency. While the University has made significant progress in this area, the main priority for 2000 will be refining and improving current policies and QA

mechanisms. Identifying creative ways of using diminishing resources for curriculum and teaching activities, while still maintaining quality, will also be a priority. Faculty Education Committees will play an increased role in both areas listed above and FEC Chairs have now been made a standing sub-committee of the UEC and a UEC Teaching and Learning Quality Co-ordinator has been appointed.

Work will continue on the review of existing course rules, communication channels and academic policies with a view to minimising administrative work and updating requirements for the changing academic environment.

## New and restructured degrees

In the Faculty of Commerce a review of the Bachelor of Commerce resulted in changes to the compulsory core of the program and increased flexibility in specialisations, including two new specialisations - International Business and Electronic Commerce. The Faculty of Creative Arts redesigned the Visual Arts strand to incorporate a new major in the Bachelor of Creative Arts - Graphic Design and New Media. The Music and Theatre strands were brought together under Performance and a number of new subjects were introduced into Creative Writing covering the areas of performance and writing for the internet. In the Faculty of Science, the success of the new four year Advanced Science degrees rewarded continued efforts to establish cross-disciplinary teaching between the member units of the Faculty, led particularly by Environmental Science.

The Faculty of Law developed a new double degree in Engineering and Law and revised the Graduate Diploma in Law program. The Faculty also decided, in accordance with University Policy on Course and Program Evaluation, to initiate a review of its LLB program. In the Faculty of Arts, the new curriculum for the Faculty's offerings on the South Coast was close to completion at year's end. A Dean's Scholars program was launched to attract high achievers to the Faculty. The Graduate Diploma in Education program is being reviewed by an educational consulting team and the report will be presented to the Faculty of Education in June 2000.

## Flexible Learning

The Faculty of Arts undertook a major curriculum review to increase the flexibility of degree programs to support student-centred learning. The Faculty is also planning to develop short courses in its areas of

strength: applied ethics, social policy and South East Asian perspectives.

The Faculty of Engineering matched a grant of \$50K from the Education Strategic Development Fund for the development of flexible learning resources and, in the Faculty of Education, the success in the CUTSD project Development and Implementation of a Flexible Web-Based Teaching and Learning Environment across an Entire Academic Organisational Unit, was starting to be reflected in graduate enrolments. In Commerce, the Department of Management was also awarded a CUTSD grant to study educational initiatives.

## Alliances

The Faculty of Education began to look at the possibility of articulating its Early Childhood Education Courses with early childhood courses on offer from NSW TAFE. Market research has indicated the potential success of this alliance and it offers the Faculty further flexibility in the use of resources.

Engineering is involved in an alliance with Loughborough University (UK) which is examining the use of software for engineering education.

The Faculty of Health and Behavioural Sciences developed the new Bachelor of Health Science in Indigenous Health which represents an outstanding partnership between the TAFE Aboriginal Health Worker Program and a flexibly delivered university degree program developed in close consultation with the Aboriginal Community. Further partnerships with TAFE are being considered in areas such as Nutrition/Hospitality Catering Operations and Biomedical Science/Pathology Techniques. Double degrees with Commerce are attracting excellent, business-oriented science students. The first of the Nutrition Management short courses offered via the ARC Key Centre for Smart Foods achieved excellent industry attendance and support.

## Market and Industry Demand

The Faculty of Commerce concentrated on the development of strong executive and postgraduate markets in the corporate business area and postgraduate programs in the domestic full fee market. The Faculty of Informatics proposed the introduction of a new undergraduate degree in Internet Science and Technology as a response to market and industry demand for professionals in the rapidly expanding area of information and communication technology. When this new degree is

introduced in 2000, it is expected to contribute to the Faculty's growth and profile in information technology.

## Teaching Awards

The Faculty of Commerce initiated a Teaching Excellence Award to recognise the skills of its academic staff. The Faculty of Informatics continued to support a Teaching and Learning Excellence Award, initiated in 1998, to encourage excellence in teaching practice. The Faculty of Law made four nominations for the University's teaching awards, a faculty record, and a reflection of the importance accorded to teaching in the Faculty of Law.

## Aboriginal Education Centre

There was an increased demand for places in Aboriginal Studies subjects, particularly from international students, and Centre staff continued teaching these subjects for the Faculty of Arts. The Centre was also involved in developing subjects for flexible delivery to students at the new South Coast campuses from 2000, and in the redevelopment and teaching of Aboriginal Education subjects for the Faculty of Education. The Centre continued to participate in a new Aboriginal Employment Strategy and academic staff were involved in improvements to the Indigenous Health degree program for the Faculty of Health and Behavioural Sciences. Two Centre staff have been working collaboratively with TAFE staff in improving tertiary literacy skills among indigenous students at EORA Aboriginal Arts Centre in Sydney, with a view to their future articulation into the University's Creative Arts courses.

## Centre for Educational Development & Interactive Resources (CEDIR)

The Centre for Educational Development and Interactive Resources (CEDIR) facilitates and supports continuous development of high quality teaching and learning practices, products, and services for the University community. It provides integrated services in staff development, product development, educational delivery and evaluation.

During 1999 Teaching Grants totalling \$126,000 were awarded under the University's Educational

Strategies Development Fund (ESDF) to eight recipients including a block grant to the Faculty of Engineering. Two CEDIR Teaching Fellowships were awarded and a Visiting Fellowship was issued to a multimedia expert from the UK to work with CEDIR on flexible delivery.

Three National Teaching Grants totalling \$418,501 were awarded to the University by the Committee for University Teaching and Staff Development. Two were for staff development (one of which was collaborative) and the third was an organisational grant in collaboration with thirty five universities led by the University of Sydney.

CEDIR organised staff development activities including university-wide information sessions and forums, faculty-based workshops and seminars, and taught the Introduction to Tertiary Teaching, which is compulsory for all new academic staff. CEDIR was also involved in the instigation of the new Shoalhaven Campus and South Coast Access Centres, developing a tutor training course and quality assurance processes for the flexibly delivered Bachelor of Arts and Bachelor of Business Administration.

## Dean of Students

The Dean of Students and the Student Services Unit continued their work on improving learning outcomes for students. The Dean is the "ombudsman" for students' complaints. The Student Services Units consist of Careers, Counselling, Disability, International Student Advisers and Learning Development. They play a pivotal role in the University community in recognising and supporting the various special needs of our diverse student population. Student Services aims to improve student learning by offering strategic support and development at crucial times. Major achievements of 1999 include Learning Development staff working with academics in Faculties to improve tertiary literacy and the Careers Service winning the national best practice award. All staff in Student Services assist Faculties in the implementation of our generic skills programs for students. In 1999 the Dean and Student Services maintained close liaison with the Students' Representative Council to improve student support.

## Objective

To position the University as an international centre of excellence in research.

# research

## Recognition as Leading Research University

The highlight of the 1999 research year was undoubtedly the announcement that the University of Wollongong had won the 'Australian University of the Year for 1999-2000' Award in the category of "Productive Partnerships in Research and Development". The University is now also a State "Centre of Excellence" and one of the largest sites of information technology, multimedia and telecommunications research in the Southern Hemisphere. Other areas of expertise include superconductors, intelligent polymers, steel processing and products, microwave technology, smart foods, policy development such as the Key Centre studying social and cultural change in the Asia Pacific region, biomedical research, medical radiation physics and environmental research.

UOW is renowned for its teaching and research strengths in environment and quality of life – Kirsten Berkendorff, a PhD student (pictured top right) was awarded Young Australian of the Year – Science and Technology (1999/2000) for her work which led to the discovery of a new antibiotic.

## New Research Appointment/Restructure

A new Pro Vice-Chancellor (Research) was appointed in mid-1999. Professor Chris Brink came to Wollongong from the University of Cape Town where he was Head of the Department of Mathematics and Applied Mathematics and the University's Co-ordinator of Strategic Planning. Under his leadership the University's research management structure was reviewed and, as a result, the University research committee's focus is being re-centred on strategic planning and policy, while matters of implementation are to be the responsibility of a number of new operational committees. The introduction of a revised Code of Practice for Research Supervision in 1999 also involved a renewal of focus on joint supervision and more detailed information packages for research students.

## Research Funding

The University maintained its strong research position by continuing to gain competitive research grants, including ARC Large Grants and ARC SPIRT Grants.

Research Income	1996	1997	1998
NCG	\$5,182,769	\$6,411,374	5,236,041
Other	\$2,973,223	\$2,734,322	\$2,971,357
Ind	\$4,515,663	\$24,704,697	\$9,671,666
<b>Total</b>	<b>\$12,671,655</b>	<b>\$33,850,393</b>	<b>\$17,879,064</b>

The above table recognises the benefits of the H.pylori commercialisation.

Its research Institutes made significant contributions. The Faculty of Engineering's Institute for Superconducting and Electronic Materials continued to build on its success with grants totalling \$1.8m from ARC and \$320K from industry. The Faculty also received a grant of \$180K from the International Fine Particle Research Institute, Inc. (USA) for research in the area of Pneumatic Conveying Systems and a number of major grants for large scale environment projects aimed at solving the problems caused by leaching of acid sulphate soils.

The Faculty of Commerce's International Business Research Institute received a \$150,000 grant from the Australian Centre for International Agricultural Research to investigate strategies for improving the performance of Indian agriculture.

## International Links

In 1999, the University continued to build on its strategy of promoting linkages with international centres of excellence. The Faculty of Commerce, for example, established the Research Office for International Cooperation in Jakarta, Indonesia, a major research initiative in the area of Business Information Systems and conducted a successful workshop on Inter-organisational Collaboration. Successful collaboration with research institutes in the USA, Holland, China and Indonesia is continuing. Within the Faculty of Science, the Biomolecular Research Centre established collaborative research links with the Oxford Centre for Molecular Sciences in England and the German National Centre for Biotechnology.

The Centre for Maritime Policy's current major research activity is a joint project with the Ocean University of Qingdao in China entitled: "Science, Law, Policy for Oceans Management" funded by the AusAID Institutional Linkages Program. In July 1999, the Centre (a joint venture between the University and the Royal Australian Navy) was transferred to the Faculty of Law and Professor Martin Tsamenyi was appointed Director for a period of 3 years. The Centre aims to be a focal point for a more comprehensive and coordinated approach to marine affairs and oceans management policy in Australia. It has also been very successful in winning consultancy agreements and current contracts include a review of Commonwealth and states/territories legislation that impact on ocean use and planning (for Environment Australia) and delivery of professional education for the Royal Australian Navy at HMAS Creswell.

## Industry Partnerships/Strategic Alliances

As befitting a University recognised for its "research and development partnerships", 1999 saw a further strengthening of research links with business and industry. The Faculty of Health and Behavioural Sciences received funding for joint projects in areas

as diverse as sports bra design, omega-3 fatty acids, exercise performance and smart cards for patient information files - the latter in co-operation with the Illawarra Division of General Practice. The Key Centre for Smart Foods had a successful inaugural year in developing new alliances with the food industry and consolidating existing partnerships. An ARC equipment grant of \$100,000 for a human whole-room calorimeter will give the faculty a facility, unique in the Southern Hemisphere, for measuring energy expenditure and the mix of fats and carbohydrates used in response to various nutritional and physical activities. In a time when obesity is one of the greatest looming costs to the health care system, such a facility is a key resource in obesity research.

The Faculty of Science further strengthened its industry links with the commencement of new joint projects sponsored by, for example, AMRAD, BHP, Bungee Meats and Phytex Australia. In the Faculty of Law, the Centre for Natural Resources Law and Policy joined the Local Government and Shires Association in conducting a major seminar for council officers and elected representatives on biodiversity, conservation and legal issues. It also oversaw the development of a training package for councillors on planning law.

### Internal Review/ Greater Support for Research Students

The University is continually looking at ways of improving its research performance. In 1999 it initiated improved procedures for the internal review of grant applications, which will continue into 2000. A greater emphasis has been placed on seeking external support of PhD scholars. The Faculty of Arts, for example, has established a mentoring scheme for early career researchers and has appointed an Associate Dean (Graduate Studies and Research) to develop and implement research policies in the Faculty.

### Raising the Research Profile

The Faculty of Science's recent PhD graduate, Kirsten Benkendorff, received the Australian Young Scientist of the Year award following her discovery of a natural antibiotic in the eggs of a shellfish. Dr Benkendorff has been praised for using her scientific skills to marry the discovery of a new medicine with the conservation of biological diversity.

Although still relatively young, the University's Faculty of Law continues to develop an active research profile. Three significant contributions to legal literature by Faculty members in 1999 were Alison Greig, "Trade Practices Law", Tom Altobelli, "Family Law: Theory Meets Practice" and David Farrier (with Rosemary Lyster and Linda Pearson), "The Environmental Law Handbook, 3rd edition". Amongst articles published by Faculty members in 1999 were two on Native Title Law arising out of an ARC Small Grant-funded study of the legal concept of native title. The first edition of a new electronic journal, *The Journal of Social Change and Critical Inquiry*, edited by the Faculty's Dr Mohr, was launched on 4 November 1999 by the Chief Justice of the Federal Court, the Hon Michael Black.

The research profile of the Faculty of Creative Arts received a boost when the Graduate School of Journalism attracted grants for a public journalism project, in conjunction with the Queensland University of Technology, and for a study of the media impact on "Foreign Perceptions of Australia/NS Pre-Sydney Olympics 2000". "Strike Me Lucky", an original music theatre presentation, was devised and performed to delegates of the National Labour History Conference in October. The Faculty also hosted a major ABC television documentary on the life of the late Australian poet John Forbes.

The enhanced research status of the Faculty of Education was evident in the increase in the number of faculty staff being invited as keynote speakers to international conferences and in the publication output from both staff and research students.

Researchers from the Faculty of Informatics broke new ground in the development of a novel mathematical model of tumour growth in mammals. The research showed that the molecular gene migration model originally proposed by Sir Ron Fisher in the 1920's to be inadequate and a new mathematical model is being developed further.

Collaboration and mutual support were strong themes in the University's 1999 research performance. They paid dividends in terms of international recognition and in the nurturing of a new generation of researchers.

## Objectives

To develop a University culture which values and supports diversity, engenders social responsibility, is sensitive to ethical issues and receptive to new ideas and critical enquiry.

To foster an intellectual environment with an international orientation.



# internationalisation



UOW is widely recognised for its teaching and research in policy and social impact – longstanding strengths in Asia-Pacific Studies, Labor History and Multiculturalism have resulted in ARC funding for a Key Centre.

# internationalisation

## Overview

The University has almost eighteen hundred international students enrolled on campus and offers off-shore courses in international locations including the Maldives, Dubai, Hong Kong and Singapore. The University also offers an international studies program through the Faculty of Arts and several Faculties are expanding their international curriculums.

## Internationalisation Committee

The University's Internationalisation Committee continued to focus on its strategic plan and developed policies to improve the University's performance in two crucial areas – articulation and advanced standing and the literacy levels of international students.

A Working Party on Advanced Standing and Articulation was formed after these areas were consistently identified as crucial to international undergraduate recruitment. As a result, a Sub-Committee to review and improve the University's current approach will be formed in 2000.

A Working Party on International Student English Language Entry Requirements reviewed several key performance factors and recommended that international students be required to undergo a language and literacy test upon enrolment and that they then be offered ongoing and structured English language support systems. In addition, a University Language and Literacy Policy is to be developed. The report of the Working Party will be implemented during 2000.

The Committee also initiated the first postgraduate coursework scholarships to encourage excellence in postgraduate coursework.

## Off-Shore Graduations

During 1999, offshore graduation ceremonies were staged in Dubai, the Maldives and Hong Kong and in January 2000 the Vice-Chancellor attended ceremonies in Singapore and Malaysia. The University has plans to stage a greater number of offshore graduation ceremonies as the number of students completing their studies at international locations increases.

## Offshore Courses

The Faculty of Commerce planned programs for China and Malaysia while its Dubai programs continue to be very successful. In the Faculty of Education opportunities for offering the early childhood courses off shore, in Malaysia in the first instance, are being explored while Thailand was added to overseas practicum teaching locations (along with the established destinations China, Malaysia and Fiji) available to undergraduate students. Specialisations such as Information Technology in Education and TESOL are now being offered offshore through flexible delivery with significant enrolments, particularly in Hong Kong and Japan.

In addition to the off-shore postgraduate degree in Maintenance Management offered to the Mass Transit Rail Corporation in Hong Kong, the Faculty of Engineering has commenced teaching the Master of Engineering Management in Singapore. The Faculty of Informatics expanded its off-shore offerings, with franchise arrangements in Singapore, Malaysia (both in Kuching and Kuala Lumpur), Dubai and Norway.

## International Curriculum

The University's international curriculum offerings have greatly expanded over the last year. The Faculty of Arts is a major contributor to the development of international curriculum through its role in the international studies specialisation and its offerings in English Language Studies. The Faculty of Commerce has developed a new specialisation in International Business and the Master of International Business is now the Faculty's largest postgraduate coursework program, attracting significant enrolments. The Faculty of Informatics has reviewed some of its postgraduate course offerings to better cater for the requirements of overseas students and its new Master of Computer Studies program will be introduced from 2000.

## Student Attraction

The Faculty of Arts performed strongly in attracting study abroad students, mainly from the United States and Europe and the Faculty of Education attracted considerable numbers of Canadian graduates to the Graduate Diploma in Education. In

the Faculty of Creative Arts, demand from international students for undergraduate programs in the areas of Graphic Design and New Media continued to be strong.

## Links and Strategic Alliances

Several of the University's Faculties made great progress in the establishment of international teaching and research links and strategic alliances. The Faculty of Engineering established research collaborations between the Institute of High Performance Computing in Singapore and BHP's Steel Products and Coated Steel Research Laboratories. Staff from the BHP Institute for Steel Processing and Products have recently established collaborations with two international Engineering Schools, ESPCI in Paris and INSA in Lyon, in the area of polymers. In the Faculty of Law, the Centre for Maritime Policy has established relations with other Universities and Centres throughout the Asia-Pacific region and in North America and Europe. Members of the Faculty of Science travelled to the USA, South America, Europe, China, South East Asia and the Pacific to engage in research, establish strategic alliances and contribute to teaching activities. Professor Rob Whelan's visit to the University of Basilia, Brazil for collaborative work on fire ecology resulted in an exchange of postgraduate research students between the two Universities.

The Faculty of Health and Behavioural Science's China Links program is an excellent example of a partnership focussed on achieving a realistic and cost-effective intervention to improve health across the world and has resulted in a number of staff and student exchanges. Also through Health and Behavioural Science, a cohort of Health Officers from Botswana underwent Environmental Health training to further their expertise on maternal and child health, water and sanitation, food hygiene and other critical areas of public health. A group of Medical Officers from the North West Frontier province in Pakistan completed a very successful program in Public Health and negotiations are under way for training of nurses and other public health practitioners.

In the Faculty of Creative Arts, Graduate School of Journalism staff established collaborative ties with universities in Taiwan, Malaysia and the United

States through the publication of a refereed journal, Asia Pacific Media Educator. The Faculty continued to foster theatrical collaboration between Vietnamese theatre practitioners and student performers. Theatre lecturer, Janys Hayes, was invited to participate in the Australia-Vietnam Theatre Exchange Forum.

## Joint Degree Programs

The development of joint degree programs with international institutions is prominent on the University's agenda and is a major focus of the Internationalisation Committee. In the Faculty of Science, the Department of Chemistry is participating in a scheme funded by the Thai Government where students complete the first two years of their undergraduate course at Mahasarakham University and the final two years at this university. The Faculty of Law is developing a joint Master of Ocean Management program with the Ocean University of Qingdao in China.

## Call Centre

As part of a new approach to international student marketing, the University joined a collaboration of Universities to form a Call Centre, located in Melbourne. The Centre is widely available to international callers and is staffed by workers fluent in several languages.

## Objective

To develop further strategic alliances with industry, commerce and the community.

# community



# service

## Community Partnerships

The University's 1999 award for its strategic partnerships recalled the community relationships that first helped to promote a university presence in the Illawarra. During 1999, Faculty and other outreach activities continued the tradition. Faculties fostered joint activities and made the expertise of staff members available to the community. Health and the environment were strong issues together with some unusual initiatives in the arts. The construction of the new Science Centre was an outstanding example of a successful partnership between the University, local and State government and local industry.

## Culture and the Arts

The Faculty of Arts established a relationship with the Nan Tien Buddhist Temple in Wollongong to promote cultural understanding and religious tolerance through joint social and cultural activities.

UOW makes social, cultural and intellectual contributions to the local region in addition to attracting to it business ventures and indirect contributions of \$1 million dollars a day.

The Faculty of Creative Arts hosted a range of community projects and collaborative cultural activities including the international exhibition 'A Century of Spanish Engraving 1899-1999'.

In a major arts initiative, the Faculty launched the federally funded Film Illawarra Project which aims to attract film and television location production to the area. There were also two more unusual partnerships in the arts. The Faculty of Creative Arts secured funding from the NSW Roads and Traffic Authority for a Public Art Project utilising RTA safety screens on bridges throughout the Illawarra. The Faculty of Commerce also contributed to the NSW Arts Advisory Council.

### Human and Physical Environments

University staff were closely involved in enhancing public health and the health of the physical environment. The Faculty of Health and Behavioural Sciences strongly supported the Illawarra's "Target 2000 Program" which informs the community on a wide variety of health issues. In the Faculty of Science, the Departments of Biological Sciences and Chemistry established research links with Southern Pathology, resulting in several sponsorships including \$5000 for a confocal microscope for Biological Sciences. Biological Sciences and Environmental Science staff also have a number of joint projects with NSW Fisheries in the areas of fisheries habitats, and management of coastal and inland waters. Supporting this sort of environmental activity with legal and professional advice, the Faculty of Law had members on the Environmental Consultative Committee, the NSW Water Advisory Council and the Shoalhaven/Illawarra Water Management Committee. The Faculty, through the Office of Research, also provided consultancy services to the Public Hearings into Community Land Management at Wollongong City Council.

In an area of particular interest to this region, the Faculty of Engineering provided expert geotechnical advice on landslides to Wollongong City Council, the NSW Police Department and the State Emergency Service following the August 1998 Wollongong floods. The Faculty is also developing an Engineering Innovation and Education Centre.

### Links to the Schools

Many of the Faculties offered strong support to regional secondary schools including the Faculty of Informatics which sponsored a Year 10 Mathematics Prize in the Illawarra and South Sydney regions, with

36 schools participating. The 1999 Spring IT School for Girls proved enormously popular, with students from 84 schools across the state and the ACT participating in the two-day program. Both Arts and Commerce provided advice and support to school students on the new HSC format. In the Faculty of Education, staff and students were involved in physical education training and educational consultancies. Primary teaching students also undertook voluntary experience at a Barnados school as part of their special education subject requirements.

### Conferences

Conferences remained important for professional and cultural development. In two examples from the year, Education hosted a major technology high schools conference (an annual event that attracts teachers from Australia and New Zealand) and Law, organised the 1999 Australasian Professional Legal Education Council's annual conference with the theme "Achieving Peak Practice in Professional Legal Education".

### The Science Centre

The Science Centre provides Science literacy for the public and the educational community of Southern New South Wales and is a major source of educational tourism for the Illawarra. The Centre has experienced annual growth to more than 30,000 visitors annually, including more than 13,000 students. High quality training programs for teachers and students have been developed in cooperation with the University, schools and industry and an outreach program extends the Centre's influence.

In response to the growth in demand for the Centre's services, construction of a major new Science Centre building commenced in 1999. The new facility is a superb custom designed building which houses the major planetarium for New South Wales, a professional quality public observatory, theatre and function rooms. In addition, the Centre provides science-based resources for schools and the public through its retail outlet.

The construction of the new building was made possible by contributions from the University of Wollongong, State and Federal Governments, Wollongong City Council, industry and the community. A planned, but as yet unfunded, second stage will comprise an exhibition centre, workshops and a permanent exhibition of the works of Lawrence Hargrave.

# resources

## Library

The Library's key goals are to provide unmediated access to resources, to improve the availability of materials and to support teaching and research through a range of complementary strategies.

Information on resource needs was augmented through the development of Faculty Profiles, comprising data on each Faculty's teaching and research strengths and their use of Library services and resources. The profiles have proved to be an excellent communication tool and provide a mechanism for addressing the priorities of each Faculty. In particular, identification of relevant electronic resources was facilitated and negotiations with database suppliers are under way.

A single web access point for all journal titles, both print and electronic, was provided through a program known as Journalsearch. Access to course-related material was expanded through the introduction of an electronic reserve facility. Students can locate past examination papers online, either from home or from the Library. Other resources will be added progressively. Professional assistance in locating needed information is now available through an email reference service: Ask a Librarian. The development of a web-based electronic tutorial is a further enhancement for those wishing to work at their own pace, from home or from remote locations. Expertise in using online services was enhanced through a program of academic outreach. This initiative offered individual assistance to academic staff in constructing current awareness profiles and in the effective use of electronic searching tools.

All of the developments described above contribute significantly to the realisation of the University's goals for enhancement of flexible learning and remote delivery of courses. In particular, the Library has concentrated on the establishment of services for the South Coast Education Network, due to commence operations next year. In addition to providing support for remote delivery, resource provision for South Coast students will be augmented by a library and access centre located on the Nowra campus and resources located in public libraries at Bega and Bateman's Bay.

Following its recognition as a finalist in the 1998 Australian Quality Awards, the Library was visited by a number of organisations planning to adopt the Business Excellence Framework. Benchmarking activities have confirmed the Library's best practice status in document delivery, staff development, communication and strategic planning.

## Information Technology Services

A comprehensive campus computer network upgrade initiated in 1997 continued in 1999, with completion scheduled for 2000. This will provide high speed access to each desktop computer, enabling staff and students faster access to information both within and outside the University. A new bank of staff modems was also commissioned to enable staff access to information or computing facilities from locations outside the campus. Fast network connections to the South Coast campuses were implemented in time for the opening of the Bega and Batemans Bay Access Centres.

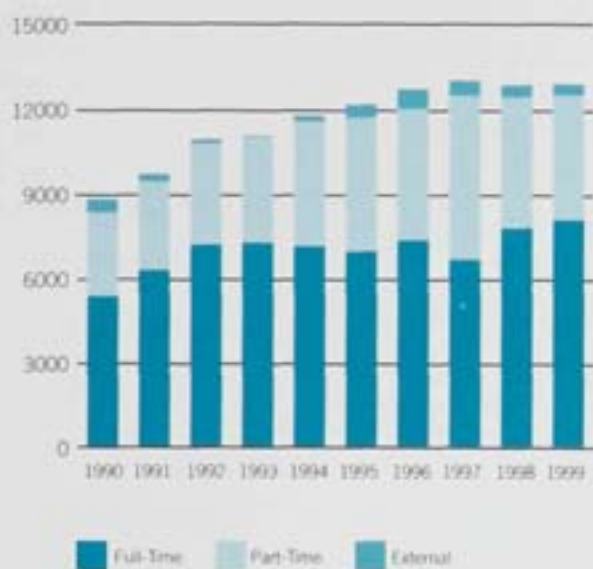
The Information Technology Resource Centre Building was extensively used by students and the opening hours of the laboratories were extended from 8 am to 12 midnight on weekdays, and extended hours on weekends.

The implementation of a major upgrade to the University financial system was completed and a number of web-enabled modules, which allow students easier re-enrolment and access to examination results, were commissioned.

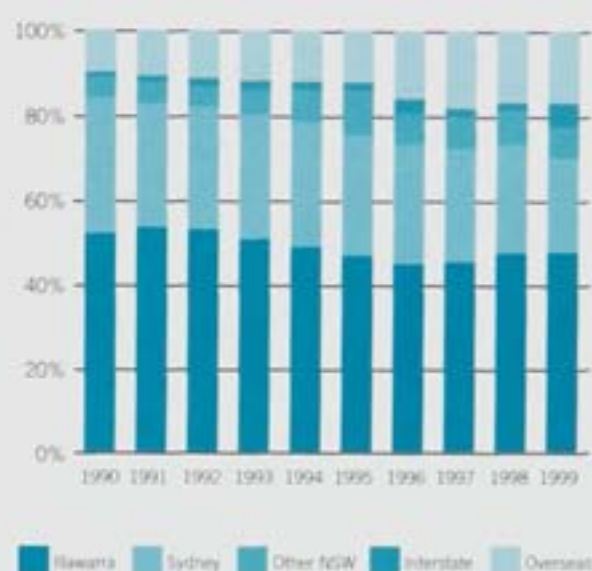
The year 2000 exposure assessment passed without incident. However, as a result of this exercise, procedures for dealing with emergency situations were upgraded.

# Student profile

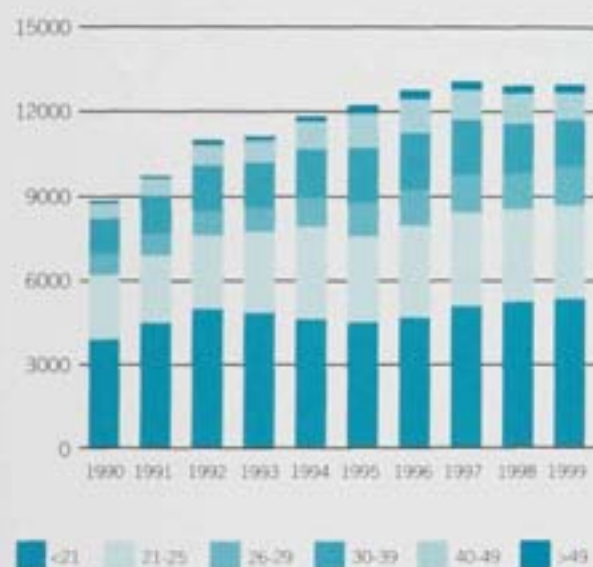
Growth in Student Population 1989-1999



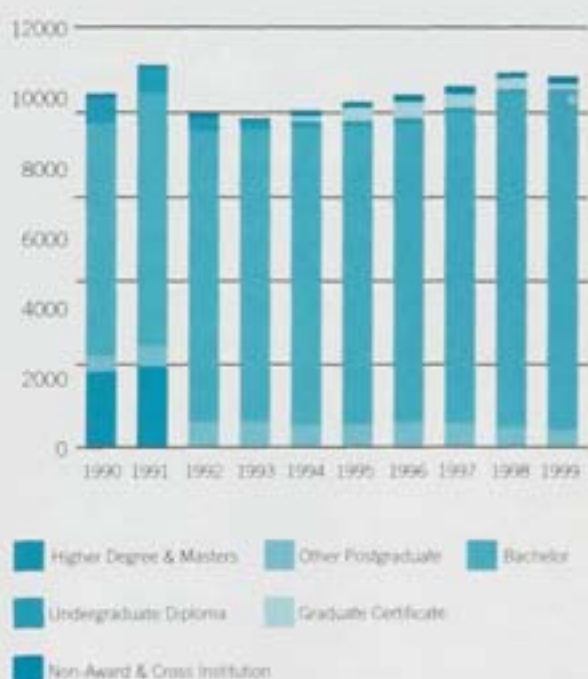
Enrolment by Region 1989-1999



Enrolment by Age 1989-1999



Enrolment Summary 1989-1999



Student Enrolment 1999






student



resources



Q&A provides students with excellent support services and facilities – enrolments on-line received a 100% take-up rate this year, and the Career Management Plan was introduced

## Accommodation

During 1999 the Colleges concentrated on enhancing academic support services for residents and refurbishing physical facilities.

At International House a former study room was refurbished to house a highly successful in-house academic support service.

The residential community took part in several charity fund raising activities and its cultural diversity was highlighted in celebrations of Chinese New Year, Amazing Thailand Day, Japanese Summer Festival and the annual International Dinner. Senior residents enjoyed a series of dinner speakers who addressed post-graduate employment options.

Refurbishment of one residential wing was completed and some central facilities were repainted. Plans are in place to extend accommodation options by offering self catered apartments in addition to collegiate facilities.

Weerona continued to broaden its multicultural profile over the year and attracted new residents from Africa and Scandinavia. Summer session residency increased by one third.

Further development of the 'Spiderweb' academic support system contributed to a clear enhancement of the overall learning culture in the college. As part of continual refurbishment plans, Weerona embarked on a seven year schedule of painting maintenance.

Campus East was again recognised by the local community for its continued effort in waste management, this year winning the Illawarra regional waste busters garden competition. The residents of Campus East embraced the "green" policy resulting in a substantial increase in the volume of material being collected for recycling. Campus East is now being used by the Illawarra Waste Board as a demonstration site for local schools and other residential facilities on the best practices to employ for waste management.

All Campus East halls of residence were fully occupied during the academic year with good occupancy during the summer period. Campus East hosted academic and cultural conferences and a training camps for international professional sporting teams.

## Students Representative Council

A major objective of the Students' Representative Council (SRC) in 1999 was to establish a constructive relationship with the University administration in relation to course accessibility, diversity and quality.

During 1999 the SRC organised vigorous support for the continuation of the Bachelor of Health Sciences in Indigenous Health. The support enlisted from University staff, student activists and the indigenous and broader community, was instrumental in bringing about a review of the program in consultation with the indigenous community. In December 1999, Council approved a new course to be offered in conjunction with NSW TAFE.

The SRC was heavily involved in a national campaign against the Federal Government's proposed introduction of Voluntary Student Unionism (VSU) and the Government eventually abandoned its plan. Anti-VSU marches were held on Campus and in Wollongong as a part of the National May-Day march.

A campaign by the Queer Collective on campus led to the establishment of the Queer space, a social area for gay students and information resource centre for all students. This space was officially opened in September during the SRC's Sexuality week. The SRC Environment Department also joined other community groups in opposing the re-opening of Port Kembla Copper Smelter. This campaign is ongoing, with the focus on Wollongong as a healthy place to live.

# human resources

## Human Resources

The core human resources functions include recruitment, employment conditions, career development and promotion, performance management, salaries and benefits administration, superannuation, employee relations and occupational health and safety.

## Personnel Policies and Practices

A full review of the staff delegations was conducted and a revised set of delegations was approved by Council at its December meeting. In addition, a new travel and entertainment policy was developed, approved and implemented.

An academic leadership survey was conducted as a follow on from the introduction of new performance appraisal schemes in 1998. The survey asked members of academic staff to complete an assessment of the performance of their respective supervisor.

## Industrial Relations Policies and Practices

Both the academic and general staff enterprise agreements expired on 31 March 1999. Negotiations with the academic union, the NTEU commenced at the beginning of the year and negotiations with the two general staff unions commenced in May. At the end of the year, negotiations were continuing with the general staff agreement close to finalisation, but with considerable progress still required with the academic agreement. There was significant industrial action during the course of the year by academic staff as part of these negotiations. Six days were lost due to strike action and there were various other bans and limitations. In the case of the general staff, no industrial action was conducted.

## Occupational Health and Safety

The growing costs of workers compensation insurance has been a matter of increasing concern and, in October, an application for a self insurance license was submitted. An audit of the University's performance in occupational health and safety is to be conducted by the Workcover Authority in February 2000. The audit will determine whether the license is granted.

## Other Human Resources Activities

There were a number of other noteworthy activities during 1999, including:

- Upgrade of human resources system to a year 2000 compliant version.
- The conduct of the first general staff leadership development program. This ground breaking program was an attempt at developing and conducting a significant in-house management development program. The course required participants to learn through the undertaking of a significant project over a 3 month period. Projects included the impact of the Goods and Services Tax on consulting and research activities, the usefulness of service level agreements and the retention of domestic students. The program was very successful and will be followed with a similar program for academic staff in 2000.
- With the advent of the State Records Act, the University was required to review its overall records management procedures and implemented an electronic document management system from Canon during the year. The first records to be converted to the new system were all employee records and this was successfully completed in August.

## University Management

Examples of major initiatives concluded during 1999 include:

- Implementation of the JDEdwards One World Financial System. This is a long term plan with many deliverables due to arrive in 2000. Apart from the migration to the new system, we deployed major improvements in monthly financial reporting, salary detail inquiries.
- Implementation of the Canon Document Management System. The system has been implemented in Personnel and Finance and has commenced in the Academic Registrar's Division. There is considerable interest from a number of faculties and the implementation has been very successful.
- Policy Development - Major new or revised policies on purchasing, use of corporate cards, travel and entertainment, staff and financial delegations have all been approved and new policies on records management and project management are in the queue for approval.
- A review of the University's investment strategy was conducted and Administrative Committee approved a strategy for the long term improvement of our investment performance. The first step in that strategy, the move of fund manager from Treasury Corporation to the National Australia Bank was also successfully concluded.

## Academic Promotions

### Promoted to Associate Professor

Dr G Hampton	Student Services
Dr J Fulcher	Information Technology & Computer Science
Dr B Derewianka	Faculty of Education
Dr J Wright	Faculty of Education
Dr M Wilson	Biological Science
Dr A Davis	Biological Science
Dr J McQuilton	History & Politics
Dr G Melleuish	History & Politics
Dr C Fergusson	Geosciences
Dr P Sharrad	English Studies

### For Promotion to Senior Lecturer

Dr T Li	History and Politics
Dr S Lodh	Accounting & Finance
Dr J Moore	Accounting & Finance
Dr R Vickers	Engineering Physics
Dr S Robinson	Biological Science
Dr R Zhang	Biological Science
Dr T Lewis	Chemistry
Dr G Hoban	Faculty of Education
Dr J Skillen	Student Services

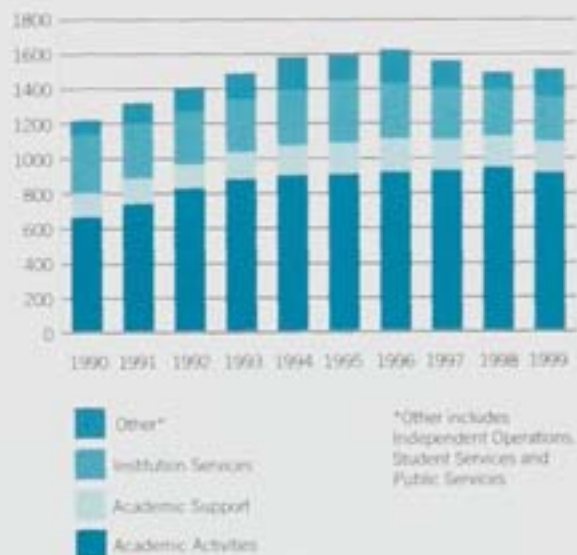
### For Confirmation and Promotion to Lecturer

Dr L Lyons	Sociology
Dr J Ciarrochi	Psychology
Dr N Crittenden	Psychology
Dr B Marlow	Psychology
Dr W Russell	Biological Science
Ms J Hayes	Faculty of Creative Arts
Ms C McPhail	Mathematics & Applied Statistics
Mr H Groeller	Biomedical Science

### For Promotion to Fellow

Dr P Flentje	Civil, Mining & Environmental Engineering
--------------	---

## Full-time and Fractional Full-time Staff 1990-1999



## Study Leave and Overseas Conference Leave

	Arts	Commerce	Creative Arts	Education	Engineering	H & BS	Informatics	Law	Science
Bangkok						1			
Bangladesh		1							
Berlin						1			
Brazil									1
Canada	1	1			1				
China		11			1				1
Cyprus			1						
Dublin	1								1
Europe	14	5	3	1	4	4	11		4
Hong Kong	1			1					
India		2	1		1				
Jakarta				1					
Japan	3		1		2				1
Johannesburg		1							
Malaysia		1							
New Zealand							2		1
Philippines	1								
Singapore		2							
South Africa									4
Spain	3								
Taiwan			1				1		
Tel Aviv							1		
Thailand		1							
United Kingdom	8	5	1	2	10	8	19	1	8
USA	5	5	2	5	10	7	10		3
Vietnam	1								



# capital works & planning

UOW's teaching and research strengths in materials and manufacturing is widely recognised - from the Indonesian steel industry to robot-controlled production lines to the railways of Hong Kong. Capital works on campus show the same commitment to quality of design and function.

# Capital Works & planning

## Capital Works

Following completion in 1998 of the final phase of a major capital construction program, the University moved into a new phase concentrating on deferred building maintenance and refurbishment. A Condition Audit of campus buildings resulted in a strategic refurbishment program which aims to ensure facilities are of an appropriate standard to support University activities. Two projects commenced: the complete refurbishment of the Chemistry Building (Bld.18) and a partial refurbishment of Building 22 which will accommodate the Centre for Mental Health Research, a Clinical Laboratory for the Nursing Unit, the Interactive Multimedia Learning Laboratory and Common Teaching Classrooms.

Other major works during 1999 included the completion in December of a Science Education

Centre and Planetarium, and the commencement of construction of a new Animal House facility. Major refurbishment and alterations were carried out in building 39 to provide expanded facilities for a collaborative venture with a major international telecommunications group. Following considerable damage caused by storms in 1998, stormwater mitigation works were instigated in 1999 to reduce the risk of future stormwater damage.

Construction continued (due for completion in March 2000) on the Shoalhaven Campus located at Nowra on the South Coast. This is a collaborative effort with the NSW Department of TAFE and Shoalhaven City Council. In addition, Access Learning Centres were completed at Batemans Bay and Bega through the year. These projects are the material framework for the South Coast Education Network.

## Campus Property

ADDRESS	LOT	AREA	LAND USE	VALUE
Main Campus - Northfields Ave. Gwynneville, City of Wollongong, Parish of Wollongong, County of Camden	Lot 210 - DP 801683	82.04 ha	University Buildings, education and research	\$4,400,000 (VG 1/7/89) \$5,000,000 (VG 7/92), (VG 7/95) \$3,200,000 + \$650,000 = \$3,850,000 (VG 7/95), \$3,850,000 (VG 7/98)
Portion of land on northern boundary and part of Main Campus. Purchased in 1992. City of Wollongong, Parish of Woonona, County of Camden.	Lot 223 - DP 826710	3636 sq m	Student Residential, education, research, buildings and grounds maintenance	Purchase Price 1992 \$200,000, (VG 1/7/89) \$115,000 (VG 7/92) \$150,000 (VG 7/95) \$165,000, VG 7/98 \$177,000

## Off Campus Property

Campus East Cowper St./Squires Way, Fairy Meadow. Purchased 1987. Parish of Woonona, County of Camden.	Lot 1 DP 719865	12.02ha	Residential	\$1,100,000 (VG 1/7/89) \$1,500,000, \$1,650,000 (VG 7/95), VG 7/98 \$1,730,000
11 Cowper St. (part of Campus East)	Part Lot 1 DP 719865	834.7 sq m	Vacant	\$75,000 (VG 1/7/89), \$90,000 (VG 7/95), VG 7/98 \$95,200
Squires Way (adj. Campus East), New Science Centre. Formerly owned jointly with Wollongong City Council. University purchased WCC's half share in March 1999 for \$1	Lot 1 DP 633347	1.21 ha	Student Residential	\$190,000 (Uni. Share \$95,000 based on 1989 purchase price.) \$250,000 (VG 7/92) \$275,000 (VG 7/95), VG 7/98 \$288,000
International House (Bld 112) Hindmarsh Ave. Gwynneville. (Carpark west of IH) City of Wollongong County of Camden.	Lot 41 DP 546239 Vol. 11543 Fol. 188, Lot 42 DP 546239 Vol. 11543 Fol. 189, Lot 1 DP 546474 Vol. 11619 Fol. 167 Lot 13 DP 585083 Vol. 13585 Fol. 56 Lot 5 DP 711102 Lot 5 DP 711102	1.2 ha	Student Residential	\$150,000 (VG 1/7/89) \$200,000 (VG 7/92 (Purchased 1979), VG 7/98 \$190,000
Woonona (Bld 112) Foley St. Gwynneville.	Part Lot B DP 160926, Conveyance Book No 753 (residue), or Lot 502, DP 738427 (as described by VG and Govt. Property Register.)	1.171 ha	Residential	\$1,150,000 (VG 1/7/89 and 7/92) \$1,200,000 (VG 7/95) (Purchased 1987), VG 7/98 \$1,230,000
Vice Chancellor's Residence, 2 Parish Ave. Mt Ousley. (Bld 109)	Lot 17 DP 24098	0.2023 ha	Educational/Research	\$150,000 (VG 1/7/89) \$183,000 (VG 7/92) \$189,000 (VG 7/95), VG 7/98 \$198,000
22 Porter St. Gwynneville (Bld 101)	Certificate of Title Reg. Book NR Vol. 4945 Fol. 128, or Lot 1 Sect 1 DP 11656 (described by VG & Govt P.R)	882 sq m	Education/Research	\$100,000 (VG 1/7/89) \$105,000 (VG 7/92) \$118,000 (VG 7/95) (purchased 1980), VG 7/98 \$123,000

# capital works & planning

## Off Campus Property

ADDRESS	LOT	AREA	LAND USE	VALUE
45 Northfields Ave. (Bid 113) City of Wollongong County of Camden	Lot 8 DP 36218	583 sq m	Education/Research	\$44,000 (VG 1/7/89) \$46,200 (VG 7/92) \$62,000 (VG 7/95) ( Purchased 1992 ), VG 7/98 \$79,500
47 Northfields Ave.(Bid114)	Lot 7 DP 36218	551 sq m	Education/Research	\$44,000 (VG 1/7/89) \$46,200 (VG 7/92) \$62,700 (VG 7/95) ( Purchased 1992), VG 7/98 \$79,500
49 Northfields Ave.(Bid115)	Lot 6 DP 36218 Vol. 13318 Fol. 14	525 sq m	Education/Research	\$44,000 (VG 1/7/89) \$46,200 (VG 7/92) \$62,700 (VG 7/95) ( Purchased 1985 ), VG 7/98 \$79,500
51 Northfields Ave.(Bid116)	Lot 5 DP 36218 Vol. 18720 Fol. 37	548 sq m	Education/Research	\$44,000 (VG 1/7/89) \$46,200 (VG 7/92) \$62,700 (VG 7/95) (Purchased 1985 ), VG 7/98 \$79,500
53 Northfields Ave.(Bid 117)	Lot 4 DP 36218 Vol. 11209 Fol. 17	545 sq m	Education/Research	\$44,000 (VG 1/7/89) \$46,200 (VG 7/92) \$62,700 (VG 7/95) (Purchased 1983 ), VG 7/98 \$79,500, VG 7/98 \$79,500
55 Northfields Ave.(Bid118)	Lot 3 DP 36218 Fol. 13318 Vol. 13	575 sq m	Child Care Facility (proposed)	\$44,000 (VG 1/7/89) \$46,200 (VG 7/92) \$62,700 (VG 7/95) (Purchased 1983 ), VG 7/98 \$81,400
57 Northfields Ave.(Bid119)	Lot 2 DP 36218	592 sq m	Education/Research	\$44,000 (VG 1/7/89) \$47,200 (VG 7/92) \$64,100 (VG 7/95) (Purchased 1992 ) \$81,400 (VG 7/98)
59 Northfields Ave.(Bid120)	Lot 1 DP 36218	633 sq m	Education/Research	\$44,000 (VG 1/7/89) \$47,200 (VG 7/92) \$64,100 (VG 7/95) (Purchased 1992 ), VG 7/98 \$81,400
18 Madeline St (Bid106)	Lot 14 DP 36215 Vol. 13330 Fol. 166	668 sq m	Student Residential Accommodation	\$49,000 (VG 1/7/89) \$51,400 (VG 7/92) \$69,600 (VG 7/95) (Purchased 1986 ), VG 7/98 \$88,600
*4 Main St (on Gips) (Bid 111, Gonds)	Lot 1, DP 670055	2166 sqm	Student Residential Accommodation	\$300,000 (VG 1/7/92) \$315,000 (VG 7/95) (Purchased March 1993), VG 7/98 \$324,000
Graduate House Student Accommodation, Northfields Ave. (Bid 121)	Lot 8, DP 36218	9972 sqm	South Coast Education Network (SCEN)	\$819,000 (VG 7/95) Purchased from Dept. of Housing, 1/3/94, \$4.5 M, VG 7/98 \$819,000
South Coast Education Network (SCEN) Bega Facility, 176 Auckland St. Bega	Lot 0002 Sec 1 DP 100838	1107 sqm	Education/Research	Purchased 2/10/98 \$31,000
**Shoalhaven Campus, Yawfl Rd, West Nowra, Parish of Nowra, County of St. Vincent	Lot 3, DP 875956 (excluding Water Easement DP 46884 and Pipeline Easement DP 231240)		Shared facility with NSW Dept. of TAFE. Land vested in the Minister for Education & Training, effective 1/4/98	

\* GUNDI, Main St, Wollongong (BLD111) Used for student residential accommodation. Leased from Makman Homes Pty Ltd. NOTE: Purchased March, 1993 3/93 Lease ceased upon purchase.

## Leased Properties

PROPERTY	LOT	LEASED FROM
Used as carpark. (adjacent to north boundary of Main Campus (near Music Centre Carpark)	2191 sqm Part Lot 17, Cert. of Title Vol 11296, Fol 63 DP 238200, File: 240/4/28	Wollongong City Council from 26/11/90
International House Car Park, adjacent to railway- carpark	2,378 sq m, SRA 284640	State Railway Authority. Land value: \$38,500 (VG 7/95)
Graham Park Campus, Berry, Shoalhaven, Crn Schofields Lane and Princes Highway, Berry	Torrens Title Vol. 13737, Folio 75 also described as Lot 77, DP 4468, File: 95/3/194 (s)	Graham Park Artificial Breeding Centre Ltd. Purchased by Shoalhaven City Council. Lease period 1/1/93 to 31/12/95. DA consent to 26/6/2001
"Sydney Centre", 55 Regent St, Sydney	File: 95/3/231	Leased from 1998 by ITC
Sports Fields at Gleniffer Brae, Crn Robsons Rd and Northfields Ave.	Certificate of Title Vol 13147, folio 245 (Lot 2 in DP 252694)	Wollongong City Council. Period: 1/1/1991 to 31/12/2000. Details of agreement with Financial Services Branch and Recreation & Aquatic Centre.
Mt. Keira Observatory Site, (off Picton Rd) Parish of Cordaux, County of Camden.	Area: 1,027 ha. Part Lot 1, DP 830607, File: 240/2/18	Under licence from Water Board from 1/7/94, formerly held under Permissive Occupancy N# 1966/5 from Dept. of Lands.
Condon Engineering Facility, Crn Bridge, Tate & Miller Sts.	Part Lot 1, DP226784, File: 240/002/019	Industrial Land Sales & Investments Pty Ltd. 5 yr lease from 28/10/98 (with 5 yr option).

# entities

## Illawarra Technology Centre (ITC)

Through its varied Australian and international networks and its research and development activities, the ITC played a significant role in the University's award for Outstanding Research and Development Partnerships.

Its Marketing Division, UniAdvice, staged recruitment events and general promotions and produced publications, advertising and direct marketing for the University and its operating units in 1999.

International enrolments were back to the record 1997 levels with particular increases in the newly established South American market. The Call Centre for applications is now fully operational and direct applications from the non-school leaver market have grown by more than 67 percent over the last year.

The Business Development Division continued to grow internationally, providing specialist expertise in education and training projects in several markets including Laos, Vietnam, United Arab Emirates, Sri Lanka, the Maldives and Pakistan. Projects included the Laos-Australia Basic Education Project, the Maldives Link Institute Project and the AusAID Training and Capacity Building Projects in Sri Lanka.

Wollongong University College has a growing role in the provision of pre-university courses and as a quality alternative to the HSC in the domestic market. The College offers Advanced Diplomas and an innovative University Access Program designed for mature age students.

ITC also manages the University's offshore campus in Dubai in the United Arab Emirates which has about 400 students.

## University Foundation

The University Foundation fosters industrial, corporate, individual and community support for the University. Over the last seven years Foundation members have raised in excess of \$13.5 million for student scholarships and research projects.

Donations of Cash and Inkind Gifts will this financial year amount to \$1.4 million. Approximately 65% of Foundation members are non-local which reflects the high regard that the greater community has for the University and its graduates.

Foundation Work Integrated Learning Scholarship students continue to gain high academic awards and are highly sought after by industry and corporate employers.

## Wollongong UniCentre

Wollongong UniCentre continued to restructure food services to provide a more diverse range of food styles. The campus restaurant was successfully repositioned as a premium restaurant and the Sal Paradise Café began operating as a New York style deli.

At the beginning of 1999 both of the Long Day Care Centres (Kids' Uni North and Kids' Uni South) achieved top-level quality accreditation and are maintaining occupancy levels in excess of 90%. The UniShop was air conditioned and continues to offer the highest base discount on texts of any campus bookseller.

Underlying a significant improvement in financial performance was a major upgrade of reporting processes, particularly in the accounting area. A strong emphasis on customer feedback and access was further enhanced with the introduction of a formal Customer Charter and feedback program and a significant shift to web-based communication.

The UniCentre continued to place a strong emphasis on student activities and involvement with the clubs and societies program enlisting over 2,400 members, an active volunteers program supporting and promoting UniCentre events and a very diverse entertainment program staging events ranging from Aboriginal Dreamtime Story-Telling to the Australian rock band, Powder Finger.

The strong financial performance of 1998 continued in 1999, with a projected surplus of \$109,320 after debt reduction of \$518,000.

## Recreation and Aquatic Centre

The Centre's first full year of operation as the "University Recreation and Aquatic Centre (URAC) Ltd." was very successful. Major studies of user demand highlighted the need for a significant extension to the current Centre.

The weights area in the gymnasium continued to grow exponentially, while other fitness programs have maintained excellent participation. Facility refurbishment has been delayed by the next major building work planned to commence in early 2000.

The Biomedical Sciences Rehabilitation Clinic is the Centre's largest tenant and is expected to expand in 2000. The Centre continues its relationship with the Faculty of Education, providing space for practical exercises and employing students as casual workers.

German and Dutch Swimming squads trained at the Centre in January and the NSW Super 12 Waratahs trained on site for 5 weeks until the end of February.

## Ethnic Affairs Priority Statement (EAPS) workplan

**Objective 1:** To provide equity of access for those who are qualified to undertake the academic programs of the University.

**Objective 2:** To attract a talented, diverse and motivated student body from both within Australia and overseas

### Strategies

Highlight the availability of special admissions arrangements and enabling courses to target groups.

Provide discipline specific English language literacy, academic literacy development and generic skills development to students through faculty programs, student workshops and consultations.

Provide and ensure access by all students to the full range of student support services including library, counselling, student loans, career advice and disabilities support.

Promote the University of Wollongong as a place of learning with a strong commitment to cultural diversity. Images of the University will reflect the cultural diversity of the University community.

Provide opportunities for people from culturally different backgrounds to access information about the University's programs and courses. University Open Day, schools visits and other promotional activities will include marketing to target group communities.

Provide English language preparation to students from NESB through Wollongong University College (WUC)

Provide Library instruction programs for students from NESB in a mutually arranged program with the Library and WUC.

Provide career development programs for NESB students in non-traditional areas.

### Key Result Area\*

Social Justice

Social Justice

Social Justice

Economic & Cultural Opportunities

Social Justice

Social Just./ Econ. & Cult. Opportunities

Social Justice

Economic & Cultural Opportunities

**Objective 3:** To develop a University culture, which values and supports diversity, engenders social responsibility, is sensitive to ethical issues and receptive to new ideas and critical enquiry.

**Objective 4:** To foster an intellectual environment with an international orientation

Provide facilities and services that support a culturally diverse campus population including accommodation, eateries, childcare, health, religious requirements and personal safety.

Support and promote the involvement of students, staff and the community in activities with a multicultural focus including friendship programs, peer mentoring, cross cultural networks, international library study placements.

Demonstrate a commitment to cultural diversity in all staff recruitment processes (selection panel training, recruitment advertisements, position descriptions).

Community Harmony

Community Harmony

Economic & Cultural Opportunities

## Strategies

Provide a cultural diversity segment or focus in all training courses within the areas of people management, staff selection, induction and promotion.

Provide staff and students with a variety of cross-cultural training workshops.

Support and publicise grievance procedures that facilitate the legitimate handling of discrimination complaints and their effective resolution.

Encourage cultural and linguistic sensitivity in course design, delivery and use of reference materials and additional reading from a culturally diverse range.

Encourage the inclusion of relevant material relating to Australia's multicultural experience, and its impact on the area of study.

Encourage those organising practicums, field work, clinical and professional placements to include experiences in settings involving people from diverse cultural backgrounds

Promote the achievements/experiences of staff and students from diverse cultural backgrounds by preparing articles for internal/external publication.

## Key Result Area\*

Comm.Harm./ Econ. & Cult. Opportunities

Social Justice

Community Harmony

Community Harmony

Community Harmony

Community Harmony

Community Harmony

**Objective 5:** To contribute to the social and economic development of the Illawarra region

**Objective 6:** To create an environment within the University community that fosters cooperation teamwork and collegial relationships

Work co-operatively with community groups in promoting the social and economic benefits of cultural diversity to the region

Implement strategies/policies to develop respect for cultural diversity and to eliminate racial vilification.

Encourage participation in collegial decision making through University committee structures. Review diversity of membership on major committees.

Encourage an appreciation of cultural differences among residents of Student Halls.

Community Harmony

Community Harmony

Social Justice

Community Harmony

**Objective 7:** To position the University as an international centre of excellence in scholarship, teaching and research.

Provide substantial research outcomes in the area of migration, multicultural studies, citizenship and racism.

Provide training to NESB academic staff in writing research grant submissions.

Support research outcomes on Aboriginal and Torres Strait Islander (ATSI) education and improved academic outcomes for ATSI students.

Community Harmony

Economic & Cultural Opportunities

Social Justice

\* NSW Government's 3 Key Result Areas in the Ethnic Affairs Action Plan 2000



# 1999 finance report

Financial Information contained in pages 41 to 49 is unaudited

## 1999 University and Subsidiaries Financial Results

### Financial Statements

The Financial Statements for the year ended 31 December 1999 have been prepared in accordance with the requirements of the Public Finance and Audit Act 1983, Public Finance and Audit (General) Regulation, 1995, applicable Australian Accounting Standards, Australian Accounting Research Foundation Urgent Issues Group consensus views and instructions issued by the Department of Education, Training and Youth Affairs (DETYA) for the preparation of annual financial reports by Australian higher education institutions.

The form and content of the Financial Statements are largely dictated by the above-mentioned legislation, standards and instructions. In complying with these requirements consolidated financial statements have been prepared for the University and its controlled entities on an accrual basis.

### Changes in Accounting Policy

In preparing the 1999 Annual Accounts there were three changes to accounting policy.

Firstly, depreciation rates for Library holdings were varied as recommended by an independent valuer. The variation in these rates reduced the comparative depreciation expense between 1998 and 1999 by \$3.8m. The new depreciation rates are similar to those used at other libraries that have used the deprival concept for valuing Library holdings. As the mode of storage of information moves from written to electronic, depreciation rates for some Library holdings may have to be again reviewed in the future. Note 1b shows a list of the new depreciation rates for the Library holdings.

Secondly, the cost of major software acquisitions can be capitalised where the useful life extends beyond 1 year. This year, the University instituted an annual review of software expenditure items to identify such items. In 1999, software costs for the JDEdwards "OneWorld" financial system and e-mail replication projects were capitalised and amortised over a three year period. Both these software items were deemed to have an extended useful life beyond the general life for most software items. The capital cost for the above items was \$0.7m.

Thirdly, the Audit Office has requested that all Universities apply AAS 15 to prepaid income from DETYA. This resulted in a \$0.2m increase in operating surplus.

### Overview of Operating result

The operating result for the 1999 year before abnormal items is principally composed of \$5.7m for the receipt of capital grants from the government, \$3.8m for changes in the depreciation rates for the Library collection and unspent research funds to collectively create an accounting surplus of \$10.487m. This compares with a net loss of \$0.758m in 1998. Every company within the consolidated financial statements returned an accounting surplus in 1999. Despite a further reduction in operating funds from the government of 1%, 1999 was a good year for receipt of capital grants, international income and research income. This was in part offset by the need to fund increased provisions for Long Service Leave, superannuation (SANCS fund) and worker's compensation, and the additional costs associated with the first full year of operation of the Business School. A more detailed review of the 1999 results is contained in a later section of this report.

### Statement of Income and Expenditure

The Income and Expenditure statement provides details of all funds received and expenditure incurred after eliminating all capital items and internal transfers. Income is reported by source of funds while expenditure is reported by activity. This statement combines a number of funds which, under granting conditions, can be utilised only for specified expenditure purposes.

Total income in 1999 for the University and its controlled entities was \$196.3m, an increase of \$9.9m, or 5.3% over the 1998 figure of \$186.4m.

The graph below shows the revenue position of the University and its controlled entities over the past 5 years. The graph excludes the H.Pylori project because its inclusion would distort the underlying pattern.

Consolidated Revenue 1995 - 1999 (excluding H. Pylori)



The 1999 increase in income was due mainly to a net increase in funding for capital and research purposes of \$7.7m, increase in international fees income of \$3.8m and in other fee income of \$2.7m. This was offset by a reduction in licence fees of \$5.4m in respect of the H. Pylori project and a fall in investment income of \$0.8m. Operating funding from the government was further reduced by 1%, or \$0.8m. The 2000 budget will include a further 1% reduction in government funds. Results for the year are summarised in the following table.

#### Comparison of Consolidated Income

	1998	1999	Variation	
	\$M	\$M	\$M	%
Government operating grant	64.4	62.4	-2.0	-3.0
HECS	27.1	31.9	4.8	18.0
Government competitive grants	7.7	11.7	4.0	51.9
Other Government grants	6.8	9.6	2.7	39.7
<b>Sub-total</b>	<b>106.0</b>	<b>115.6</b>	<b>9.6</b>	<b>9.1</b>
Other research grants and contracts, scholarships and prizes	6.9	6.8	-0.1	-1.0
Investment income	2.1	1.3	-0.8	-38.0
Fees, charges and other	64.7	71.3	6.6	10.0
Licence Fees-H. Pylori	6.7	1.3	-5.4	-80.5
<b>Total income</b>	<b>186.4</b>	<b>196.3</b>	<b>9.9</b>	<b>5.3</b>

Although shown separately in the Financial Statements, for comparative purposes, Government operating grants and the Higher Education Contribution Scheme (HECS) should be considered together because the Commonwealth government grant is adjusted each year by the amount collected for HECS. Other government grants have been shown on a separate line above and consist of government capital grants, DETYA research funds and other governments grants.

On this basis, income from government sources, at 59% of total(excluding Licence Fees-H. Pylori), remains the major component of total funding. For the University alone, the proportion of income from government sources has steadily declined from 82.8% in 1987 to 70% in 1999(1999 included \$5.7m capital grants). Other research grants and contracts, scholarships and prizes reduced by \$0.1m in 1999. The \$6.6m increase in fees, charges and other income is mainly due to an increase in international fees income and consulting income for the subsidiaries. The reduced level of licence fees for the H. Pylori project represents the final payment in 1998 for Intellectual Property, valued at \$5.4m.

In 1999 the income shown in the accounts is the interest earned on the security deposit. The income is matched by an equivalent expense of \$1.3m for provisions to future subscriptions.

Investment returns were lower in 1999 than in 1998, due to a reduced level of income from fixed term deposits arising from a capital loss as interest rates increases changed the current value of the fixed investment.

#### Deferred Income- Government contributions for superannuation

This amount represents changes in the University's liability for emerging cost superannuation benefits. Based on information provided as at 31 December 1999 it remains unclear what share of the unfunded liability the Commonwealth and State governments will fund and in what proportion. In 1999 the unfunded liability decreased by \$11.967m. This variation has a nil effect on the accounting result for 1999. The decrease in funding requirements resulted from the Government Actuary's latest assessment of the Gross Superannuation Liabilities for the defined benefit schemes administered by the SAS Trustee Corporation for the year ending 31 December 1999.

#### Expenditure

1999 expenditure for the University and its controlled entities was \$185.8m, a decrease of \$1.4m or 0.75% over 1998. However, after excluding the provision for the H. Pylori project, expenses for 1999 increased \$3.6m or 2.0% on 1998.

The following expenses increased:

- An increase in LSL provision \$1.5m
- An increase in SANCS superannuation \$1.2m
- An increase in Worker's Compensation provision \$0.6m
- Computer rental \$0.5m
- Consultancy/agency fees \$2.6m
- Redundancies \$0.6m
- Other \$1.5m

The following expenses reduced:

- Depreciation for Library holdings \$3.8m
- Minor works \$1.4m

#### Balance Sheet

For the University and its controlled entities there was a \$66.2m increase in net assets. This is mainly due to a net increase in the valuation of the buildings summing to \$48.4m. The University is

required to revalue its buildings every 3 years and such a revaluation was conducted during 1999.

The other reason for a significant increase in net assets was a prepaid asset for SASS superannuation valued at \$5.7m.

**Current Ratio 1995 - 1999**



The current asset ratio for 1999 is 1.26 compared with 1.14 for 1998( the actual current ratio is 1.57, but this is distorted by a change in the total for current liabilities due to AAS 15). The current ratio is the ratio of current assets to current liabilities and the chart below indicates the trend in this ratio over the period 1995-1999. The ratio is a measure of liquidity and indicates the University's ability to meet its short-term financial obligations.

The increase in invested funds for 1999 and prepaid salaries are the main reasons for the improved current ratio.

## 1999 Results for the University of Wollongong

### Operating results

The University's operating budget for 1999 covers Commonwealth government operating grants, full-fee paying student funds and other miscellaneous funds related to operations. This budget did not include

## University of Wollongong INCOME STATEMENT FROM INTERNAL MANAGEMENT ACCOUNTS

	1999 Forecast	1999 Budget	1999 Actual	Variation	2000 Budget
	000's	000's	000's	000's	000's
<b>Revenue</b>					
Commonwealth government grants	81,156	71,791	81,156	-9,365	75,116
Higher Education Contribution Scheme	31,860	31,860	31,860		32,852
NSW government grants	1,541	1,000	1,541	-541	1,000
Other research grants and contracts	5,310	5,000	5,310	-310	5,177
Scholarships and prizes	2		2	-2	
Donations and bequests	63		93	-93	152
Investment income	3		3	-3	1,300
Fees and charges	33,867	22,030	35,347	-13,317	35,281
Other	762	711	1,031	-320	1,232
Licence Fees- H. Pylori project	1,337		1,337	-1,337	
<b>Total Revenue</b>	<b>155,901</b>	<b>132,392</b>	<b>157,680</b>	<b>-25,288</b>	<b>152,110</b>
<b>Expenses</b>					
Academic activities	92,055	88,353	88,958	-605	94,417
Libraries	7,119	7,104	7,062	42	7,309
Other academic support services	5,566	5,263	5,866	-603	6,990
Student Services	9,642	1,655	10,300	-8,645	9,905
Public services	128	128	127	1	128
Building and grounds	21,895	13,878	22,395	-8,517	13,985
Administration and other general institutional services	13,290	11,532	13,643	-2,111	13,769
Other	4,869	4,479	4,899	-420	5,607
Provisions for future subscription- H. Pylori	1,337		1,337	-1,337	
<b>Total Expenses</b>	<b>155,901</b>	<b>132,392</b>	<b>154,587</b>	<b>-22,195</b>	<b>152,110</b>
<b>Net operating result</b>			<b>3,093</b>	<b>-3,093</b>	

grants received for capital projects, Halls of Residence income, consulting and other non-academic income. Traditionally the University operating budget had only included recurrent funds. The 1999 forecast was expanded to include the other sources of income. It is the intention that, in future operating statements, sources of income will be the same as the statutory annual accounts. Thus, it should be noted that many of the variations between the actual results and the approved Budget are mainly items of revenue that were not included in the original budget. The variance analysis below notes which items have been included in the 1999 forecast. Income from the Halls and consultancies has been included in the 2000 Budget.

This internal operating budget and the statutory financial statements are prepared based on different accounting principles. In order to enhance understanding of the financial statements and demonstrate how the financial result for 1999 compares with the University plan as set out in its budget for 1999, these different formats need to be compared.

The reconciliation between the internal management accounts and the statutory accounts is a reconciliation between the operating surplus reported in the management accounts using cash flow accounting and the result shown in the statutory accounts which was prepared using accrual accounting. The operating surplus in the management accounts above consists of \$3.1m in committed funds for research in 2000.

#### Reconciliation between management accounts and statutory accounts

Operating Result as per management accounts	3093
Expenses in management accounts transferred out	
• Revenue adjustment for AAS15 compliance	218
• Purchases of equipment	9155
• Capital Allocation	16548
Additional Expenses contained in statutory accounts and not in management accounts	
• Depreciation	-12676
• Capital grants included in income	-5700
• Other non cash expenses	-893
<b>Operating Result as per statutory accounts</b>	<b>9745</b>

#### Variance analysis of the internal management accounts

Below is a listing of income and expenditure items that have been included in the 1999 forecast but are not part in the 1999 approved budget. By adding these items to the approved budget for 1999 the variations between 1999 actual and the approved budget are more meaningful.

Actual income for 1999 is \$25.3m different to the original budget mainly because of the large number of items which were not contained in the original budget but which were subsequently included in the

forecast. The following are the main items:

• Capital grants from government	\$5.7m (part of forecast)
• Increase in Research Quantum	\$1.9m (part of forecast)
• Research and Scholarships	\$2.4m
• Halls of residents	\$7.1m (part of forecast)
• International fees	\$2.6m (part of forecast)
• Other DETYA adjustments	\$0.9m (part of forecast)
• H. Pylori project	\$1.3m (part of forecast)
• Insurance claim	\$1.1m (part of forecast)

Actual expenses for 1999 is \$22.2m different to the original budget for the same reasons as the income above is different. The following are the main items:

• Redundancies	\$0.6m
• Student services (Halls of Residence)	\$7.7m (part of forecast)
• Building and grounds (capital)	\$8.0m (part of forecast)
• H. Pylori project	\$1.3m (part of forecast)

#### Variance analysis of the balance sheet

In 1999 there was an increase in current assets over budget amounting to \$2.2m. This was mainly due to an increase in investment funds due the receipt of funds for the South Coast Educational Network (SCEN) and prepaid salaries.

Current liabilities also decreased by \$2.1m, due mainly to a move from non-current to current for borrowings for reporting purposes and the movement of prepaid income from DETYA to current year revenue as per instructions from the Audit Office. Thus the current ratio is 1.87 compared to the budget of 1.62, but the variation is not significant.

Non-current assets has increase by \$48.8m, mainly due to a net increase in revaluation for building of \$48.4m and capitalisation of building projects for \$6.3m, which is offset by a net reduction in unfunded superannuation of \$6.2m.

Non-current liabilities have reduced by \$10.6m, which is due to a re-allocation for loans by the University amounting to \$5.9m and a reduction in the liability for SASS for \$6m. This is partly offset by an increase in long service leave liability of \$1.3m and \$1.92m for SANCS.

In comparison to the 1999 budget the general position of the balance sheet has improved with total assets increasing and total liabilities decreasing for the year.

University of Wollongong  
1999 ACTUAL vs 1999 BUDGET - BALANCE SHEET

	1999 budget 000's	1999 actual 000's	Variation 000's
<b>Current Assets</b>			
Cash	500	458	-42
Receivables	4,800	5,324	524
Investments	34,000	34,691	691
Inventories	600	808	208
Other	850	1,679	829
<b>Total Current Assets</b>	<b>40,750</b>	<b>42,960</b>	<b>2,210</b>
<b>Non-Current Assets</b>			
Receivables	52,000	41,044	-10,956
Investments			
Property, plant and equipment	247,000	300,444	53,444
Other		5,756	5,756
Intangibles		599	599
<b>Total Non-Current Assets</b>	<b>299,000</b>	<b>347,843</b>	<b>48,843</b>
<b>Total Assets</b>	<b>339,750</b>	<b>390,803</b>	<b>51,053</b>
<b>Current Liabilities</b>			
Creditors	7,500	6,085	-1,415
Borrowings	604	6,691	6,087
Accrued liabilities	17,000	10,157	-6,843
<b>Total Current Liabilities</b>	<b>25,104</b>	<b>22,933</b>	<b>-2,171</b>
<b>Non-current liabilities</b>			
Borrowings	6,292	296	-5,996
Accrued Liabilities	78,000	73,662	-4,338
Other	250		-250
<b>Total Non-current Liabilities</b>	<b>84,542</b>	<b>73,958</b>	<b>-10,584</b>
<b>Total liabilities</b>	<b>109,646</b>	<b>96,891</b>	<b>-12,755</b>
<b>Net Assets</b>	<b>230,104</b>	<b>293,912</b>	<b>63,808</b>
<b>Equity</b>			
Accumulated results of operations	186,130	201,561	15,431
Reserves	43,974	92,351	48,377
Other			
<b>Total Equity</b>	<b>230,104</b>	<b>293,912</b>	<b>63,808</b>

## Payment of Accounts

The New South Wales Treasury requires reporting on time taken to pay creditors' accounts. This is aimed at improving payment performance and management of accounts payable. Results are set out in the table below.

## Risk Management and Insurance Report

The University Audit Committee undertakes reviews of the University's annual Financial statements, audit programs and reports, and internal controls to enable the University Council to discharge more effectively its fiduciary responsibilities with regard to the University's accounting, control and reporting affairs. The Committee monitors both the internal control environment and the management and stewardship of University assets. An overall risk assessment of all aspects of the University's operations has been conducted for the Committee and is used by the Committee as the basis for a comprehensive triennial audit program.

Workers' Compensation insurance is arranged with QBE Workers Compensation. After an extensive review of the University of Wollongong Occupational and Health strategy it has been recommended that the University of Wollongong move to self insurance in 2000. However before the University of Wollongong can move to self insurance a compliance audit needs to be carried out by the WorkCover NSW. This audit was completed in February 2000 and the University is awaiting the results.

The University's Occupational Health and Safety Committee is active in undertaking regular campus inspections and reporting on safety within the workplace. This committee meets regularly to

ensure that awareness of safety and ergonomics is raised across the University.

The University has a range of other insurance policies to cover property, general third party and product liability, professional indemnity, workers compensation, comprehensive motor vehicle, marine hull, voluntary workers, overseas travel for university officers and employees, business interruption and consequential loss. Property cover includes industrial special risk, burglary, fidelity guarantee, accidental damage, property in transit and machinery breakdown.

The University of Wollongong other insurances were held with Unimutual, The Australian and New Zealand Universities Protection and Indemnity Foundation for the year 1999. Unimutual is made up of member universities who group together to market university insurances to the underwriter market. Unimutual act as brokers for the Universities as well as providing a layer of cover for low value claims. Public and Product Liability Cover, as well as industrial special risk, are also brokered through Unimutual and is marketed to a number of major underwriters.

The Human Experimentation Ethics Committee, an accredited Institutional Ethics Committee, continues to provide clearance for any medically invasive procedures undertaken by the University.

## Investment Management Performance

For Administrative purposes, the University's financial assets are divided into two separate funds:

1. A short term fund of up to \$10 million for day-to-day cash management needs, invested in cash, deposit and bank bills; and
2. A longer term investment for core financial assets, invested in fixed interest assets.

Quarter ended	31 Mar	30 Jun	30 Sep	31 Dec
	\$	\$	\$	\$
Interest Paid due to late payment	Nil	Nil	Nil	Nil
Accounts payable at month end				
Current	3,441,086	1,598,765	147,526	182,598
Between 30 and 60 days overdue	1,904	158	125	34
Between 60 and 90 days overdue	(2,230)	22	37	65
More than 90 days overdue	(3,990)	(4,184)	(3,175)	(5,337)
<b>Total</b>	<b>3,436,770</b>	<b>1,594,761</b>	<b>144,513</b>	<b>177,360</b>

\* Figures in brackets signify outstanding credit notes that will be applied against future payments or for which refunds will be sought.

## Details of accounts paid

Accounts paid on time	99.3%	99.1%	99.7%	99.8%
Total of accounts paid on time	\$20.4M	\$12.8M	\$14.0M	\$19.17M
<b>Total amount of accounts paid</b>	<b>\$20.5M</b>	<b>\$12.9M</b>	<b>\$14.1M</b>	<b>\$19.22M</b>

The University's target for accounts paid on time is 95 per cent.

This strategy is reviewed annually. During 1999 the University appointed National Australian Asset Management Ltd as its funds manager for fixed terms investments. Day-to-day cash management needs are currently invested in T-Corp's Hourglass cash facility. The management of short funds will be reviewed in 2000.

At the end of 1999, a total of \$34.7 million was invested in fixed term and short term cash facilities. The National Australian Asset Management Ltd invests in mostly fixed term facilities held \$25.2m, while \$9.5m was held with the NSW Treasury Corporation Hourglass investments.

The Annual Reports (Statutory Bodies) Regulation requires the University to report investment performance of the University's surplus funds compared with relevant Hourglass investment facilities. The University's actual returns and comparable Hourglass benchmark rates for 1998 are given below:

University Return	Hourglass Facility Benchmark Return	
%	%	
4.92	5.01	Cash
1.98	1.91	Fixed Interest

The reason for the poor return for fixed term investments is mainly due to the constant rise in interest rates for fixed investments that resulted in capital losses for our current investment portfolio.

## Donors and Benefactors

### Foundation Scholarship Income

Aboriginal Education Council NSW	2,000.00
ACT Roads & Stormwater	27,900.00
ACTEW Corporation	37,200.00
Alcatel Australia Ltd	4,801.20
Allied Group of Companies	6,825.00
Aust. Decorative & Fine Arts Society (Shoalhaven) Inc	1,000.00
Australian Rugby Union Ltd	1,000.00
Bega Valley Shire Council	9,300.00
BHP Research	46,500.00
Bomaderry Bowling Club	2,000.00
Catholic Development Fund,	
Diocese of Wollongong	3,000.00
Corn Tech Communications Pty Ltd	6,000.00
CSIRO	9,300.00
Epic Securities Limited	15,000.00
Eurobodalla Shire Council	6,000.00
Fraternity Bowling & Recreation Club	6,000.00
Gammasonics Institute for	
Medical Research Pty Ltd	43,490.00
Illawarra Area Health Service	30,000.00
Illawarra Credit Union Ltd	10,000.00

Illawarra District Rugby League Football Club	4,650.00
Illawarra Medical Association	500.00
Illawarra Mutual Buildings Society Ltd	18,600.00
Illawarra Technology Corporation Ltd	55,800.00
Illawarra Waste Management	37,620.00
Integral Energy	55,800.00
Jennmar Australia Pty Ltd	15,000.00
Milton - Ulladulla Bowling club	500.00
Milton - Ulladulla Ex-Services Club	500.00
MM Kembla Products	9,300.00
Mollymook Golf Club	500.00
Narooma Services Club	500.00
National Australia Bank	10,000.00
Nortel Networks	78,800.00
Quota Club of Narooma	1,000.00
Roams D & B	500.00
Rotary Club of Berry-Gerringong	1,000.00
Rotary Club of Narooma	500.00
Rotary Club of West Wollongong	2,000.00
Rotary Club of Wollongong	4,000.00
Shoalhaven City Council	20,000.00
Soroptimists Club Wollongong	1,400.00
Southern Pathology	26,950.00
St Georges Basin Country Club	1,500.00
Sun Microsystems Australia Pty Ltd	12,000.00

### Donations Other

AIMM Illawarra	31,000.00
Bremner J	200.00
Chroma Australia Pty Ltd	1,200.00
Cutco (Australia) Inc	500.00
Deland M	100.00
Ferland M	100.00
Head I	100.00
Hill J	1,000.00
Illawarra Jazz Club	200.00
Integral Energy	6,000.00
Macquarie PC	100.00
Marthick JK	100.00
Milne AK	100.00
Musica Viva Australia	250.00
Nanson G	200.00
Norris R	250.00
Nortel Technology	20,250.00
Other	2,550.85
River Lab Glass	500.00
Robinson S	100.00
Russell K	100.00
Shoalhaven City Council	40,650.15
Southern Pathology	500.00
SRC Sponsorship Website	15,000.00
University of Sydney	310.00
University of the South Pacific	9,497.50
Vangemeersch RG	313.00
	<b>131,171.50</b>

### Postgraduate Scholarships

Amrad Operations Pty Ltd	15,000.00
Australian Institute of Nuclear Science & Engineering	7,500.00
Australian Society For Limnology	250.00
Berlei	5,000.00

Betatene Pty Ltd	5,000.00
BHP	103,180.00
Bioproperties (Australia) Pty Ltd	20,000.00
Bunge Meat Industries	5,000.00
Catholic School Office	44,145.00
Garnock Engineering Company Pty Ltd	7,000.00
Heart Research Institute	8,067.50
Hewlett-Packard Australia	5,000.00
Industrial Research Limited (NZ)	21,667.63
Kiama Council	24,000.00
Land & Water Resources	6,250.00
Tycan Australia Pty Ltd	11,000.00
University of Wollongong Recreation & Aquatic Centre	3,000.00
Verekers Solicitors	3,000.00
Westpac Banking Corporation	4,000.00
Wollongong City Council	37,200.00
Wollongong Unicentre	600.00
Wray Owen NSW Pty Ltd	1,000.00
ZONTA Club of Wollongong Inc	2,000.00
ZONTA International Macarthur	300.00
	<b>688,336.20</b>

#### Donations Through the Foundation

Andersen Dr Steven	10,000.00
Goldring Judge Jack	313.00
Law Society of NSW	2,000.00
National Australia Bank	20,000.00
UOW Professors Association	1,290.77
Visiting Artists Programme	12,749.00
Wollongong Conservatorium of Music	500.00
	<b>46,852.77</b>

#### Science Centre Donations

Cleary Bros (Bombo) Pty Ltd.	7,500.00
Faculty of Education	2,000.00
Heaven R	150.00
Illawarra Waste Management	1,934.00
Other	220.00
Science Centre Donation Box	811.77
Soroptimist Club of Bulli	1,000.00
	<b>13,615.77</b>

#### Science Centre Dinosaur Donations

Bremner J	100.00
Hanson H	120.00
Kroek J	120.00
Naylor TE	400.00
Other	78.00
Poland J	120.00
Rod Yeatman and Associates	120.00
Tombling R	120.00
Vesey MR	100.00
Zealey WJ	200.00
	<b>1,478.00</b>

Metal Manufacturing Limited	2,500.00
MM Cables	2,500.00
Motorola Australia	35,500.00
NSW Agriculture	12,000.00
Phytex Australia	5,000.00
Shoalhaven City Council	26,000.00
Smoking & Health Research Foundation Aust	22,592.00

Snowy Mountains Engineering Corp (Vic)	15,000.00
St George Cancer Care Centre	14,841.85
STC Refractories	5,000.00
Welding Technology Institute Australia	20,000.00
	<b>437,993.98</b>

#### Prizes

AIMM	250.00
Applied Probability Trust	2,954.58
BHP	1,750.00
Ciba Speciality Chemical	200.00
Control Automation Pty Ltd	300.00
CRC Materials Welding & Joining	500.00
ESS Engineering Services & Supplies	300.00
ESSO Australia Ltd	2,000.00
Incitec Industrial Chemicals	100.00
Institute of Metals & Materials	400.00
Joint Coal Board	400.00
Kembla Products	150.00
Law Foundation NSW	235.00
Lawrie Justice M J	200.00
Moldrich C	100.00
Other	278.00
PHD Engineering Pty Ltd	250.00
Public Service Association	1,000.00
Warner H	600.00
	<b>11,967.58</b>

#### Donations Inkind Through the Foundation

FedEx	15,000.00
Shoalhaven City Council	644,746.00
	<b>659,746.00</b>

#### Acknowledgement of Donations Inkind

Wollongong City Council	200,000.00
-------------------------	------------

## Grants to Non-Government Community Organisations For 1999

#### Grants

Illawarra Regional Information Service  
Grant: \$77,172  
Purpose: Contribution towards operating expense.

Illawarra Academy of Sports  
Grant: \$15,000  
Purpose: Contribution towards operating expense.

Exercise Science and Rehabilitation Centre  
Grant: \$10,000  
Purpose: Contribution towards purchase of  
equipment and operating expense.

Conservatorium of Music  
Grant: \$128,000  
Purpose: Contribution towards operating expense.

These grants are included in the line Other  
Overheads under the heading Overheads in the  
Operating Budget.

## Matters Raised by the Auditor General in Management Letters

The following information summarises matters raised by the NSW Auditor-General in the management letter regarding the audit of the 1998 Financial Statements and the action plans adopted by management.

### **Application of accounting standard 13 re deferral expenditure on research grants**

1998 was the first year in which AAS 13 was applied and procedures were implemented to capture the correct value of the deferred expenses.

### **Library holdings -useful life and valuation**

The Library collection was revalued in 1999 and new depreciation rates were applied to the collection.

### **Budgeted information in the Annual Accounts**

In the 1999 Annual Accounts the budget variance analysis and Balance Sheet for the University was included as required.

### **Financial statement deadlines**

The Council meeting date was be changed to meet to required deadlines

### **Administration of the corporate cards**

A new corporate card policy was developed, approved and implemented. A new simpler card system was implemented and card holders were obliged to attend training.

### **Overseas bank balances**

Balances at the end of the year should reflect correct exchange rate.

### **Outstanding unrepresented cheques**

Stale cheques are to be written back on a regular basis

### **Written procedures for inventory stocktakes**

Written procedures are to be issued.

### **Payroll for casual employees**

The University reviewed procedures for processing payments of casual staff wages and issued a reminder circular to supervisors.

# 1999 financial statements

The Financial Statements shown on pages 53 to 84  
have been audited by the Auditor-General of New South Wales



BOX 12 GPO  
SYDNEY NSW 2001

## INDEPENDENT AUDIT REPORT UNIVERSITY OF WOLLONGONG

To Members of the New South Wales Parliament and Members of the Council of the University of Wollongong

### Scope

I have audited the accounts of the University of Wollongong for the year ended 31 December 1999. The financial report includes the consolidated financial statements of the consolidated entity comprising the University and the entities it controlled at the year's end or from time to time during the financial year. The members of the Council of the University are responsible for the financial report consisting of the accompanying statements of financial position, operating statements and statements of cash flows, together with the notes thereto, and the information contained therein. My responsibility is to express an opinion on the financial report to Members of the New South Wales Parliament and members of the Council of the University based on my audit as required by sections 34 and 41C(1) of the *Public Finance and Audit Act 1983 (Act)*.

My audit has been conducted in accordance with the provisions of the Act and Australian Auditing Standards to provide reasonable assurance whether the financial report is free of material misstatement. My procedures included examination, on a test basis, of evidence supporting the amounts and other disclosures in the financial report, and the evaluation of accounting policies and significant accounting estimates.

These procedures have been undertaken to form an opinion whether, in all material respects, the financial report is presented fairly in accordance with the requirements of the Act, Accounting Standards and other mandatory professional reporting requirements so as to present a view which is consistent with my understanding of the University's and the consolidated entity's financial position, the results of their operations and their cash flows.

The audit opinion expressed in this report has been formed on the above basis.

### Audit Opinion

In my opinion, the financial report of the University of Wollongong complies with section 41B of the Act and presents fairly in accordance with applicable Accounting Standards and other mandatory professional reporting requirements the financial position of the University and the consolidated entity as at 31 December 1999 and the results of their operations and their cash flows for the year then ended.

### Inherent Uncertainty Regarding Commonwealth/State Government Debtor for Unfunded Superannuation

Without qualification to the opinion expressed above, attention is drawn to the following matter. As indicated in Note 16 within the financial report, it is disclosed that uncertainty currently exists concerning the amount owing from Commonwealth and State governments for their contributions to the University's unfunded superannuation liability for State Superannuation Schemes. Until resolution of this uncertainty, the financial effect of this matter is unclear.

S Kalagurjevic FCPA  
Director of Audit

(duly authorised by the Auditor-General of New South Wales  
under section 41C(1A) of the Act)

SYDNEY  
7 April 2000




## UNIVERSITY OF WOLLONGONG

### STATEMENT BY MEMBERS OF COUNCIL

Pursuant to Section 41C(1C) of the Public Finance and Audit Act, 1983 and in accordance with a resolution of the members of the Council, we declare on behalf of the Council of the University of Wollongong that, in our opinion:

1. The accompanying financial statements present fairly the financial position of the University as at 31 December 1999 and transactions for the year then ended.
2. The statements have been prepared in accordance with the requirements of the Public Finance and Audit Act, 1983, Public Finance and Audit (General) Regulations 1995, applicable Accounting Standards and Australian Accounting Research Foundation urgent Issues Group consensus views.

Further, we are not aware of any circumstances which would render any particulars included in the financial statements to be misleading or inaccurate.



G.R. Sutton  
Vice-Chancellor



G. Edgar  
Deputy Chancellor

7 April, 2000

## STATEMENT OF FINANCIAL POSITION AS AT 31 DECEMBER 1999

Consolidated 1998 \$'000	University 1998 \$'000		Note	Consolidated 1999 \$'000	University 1999 \$'000
		<b>Current Assets</b>			
2,078	(559)	Cash	3(i)	3,269	458
6,096	6,249	Receivables	3(ii)	5,938	5,324
32,249	32,249	Investments	3(iii), 6	34,691	34,691
2,656	963	Inventories	3(iv)	2,626	808
1,673	974	Other	3(v)	2,554	1,679
<b>44,752</b>	<b>39,876</b>	<b>TOTAL CURRENT ASSETS</b>		<b>49,078</b>	<b>42,960</b>
		<b>Non-Current Assets</b>			
52,702	53,034	Receivables	4(ii)	40,730	41,044
31	-	Investments	4(i), 6	31	-
248,748	244,678	Property, plant and equipment	4(v)	304,329	300,444
-	-	Other	4(ii), 10(vi)	5,756	5,756
21	-	Intangibles	4(iv)	609	599
<b>301,502</b>	<b>297,712</b>	<b>TOTAL NON-CURRENT ASSETS</b>		<b>351,455</b>	<b>347,843</b>
<b>346,254</b>	<b>337,588</b>	<b>TOTAL ASSETS</b>		<b>400,533</b>	<b>390,803</b>
		<b>Current liabilities</b>			
10,092	6,925	Creditors	7(i)	9,253	6,085
7,955	7,295	Borrowings	7(ii), 9	7,725	6,691
21,124	17,377	Accrued liabilities	7(iii)	13,892	10,157
<b>39,171</b>	<b>31,597</b>	<b>TOTAL CURRENT LIABILITIES</b>		<b>30,870</b>	<b>22,933</b>
		<b>Non-Current liabilities</b>			
2,674	314	Borrowings	8(i), 9	2,096	296
69,953	77,159	Accrued liabilities	8(ii)	67,082	73,662
209	209	Other	10(vi)	-	-
<b>72,836</b>	<b>77,682</b>	<b>TOTAL NON-CURRENT LIABILITIES</b>		<b>69,178</b>	<b>73,958</b>
<b>112,007</b>	<b>109,279</b>	<b>TOTAL LIABILITIES</b>		<b>100,048</b>	<b>96,891</b>
<b>234,247</b>	<b>228,309</b>	<b>NET ASSETS</b>		<b>300,485</b>	<b>293,912</b>
		<b>EQUITY</b>			
190,273	184,335	Accumulated results of operations		208,134	201,561
43,974	43,974	Reserves	12	92,351	92,351
<b>234,247</b>	<b>228,309</b>	<b>TOTAL EQUITY</b>		<b>300,485</b>	<b>293,912</b>

The Statement of Financial Position is to be read in conjunction with the notes to and forming part of the accounts on pages 57 to 84.

## OPERATING STATEMENT FOR THE YEAR ENDED 31 DECEMBER 1999

Consolidated 1998 \$'000	University 1998 \$'000		Note	Consolidated 1999 \$'000	University 1999 \$'000
<b>OPERATING REVENUE</b>					
76,062	75,976	Commonwealth Government grants	22	82,173	82,173
27,079	27,079	Higher Education Contribution Scheme	23	31,838	31,838
2,840	2,840	NSW State Government grants	24	1,611	1,611
5,801	5,801	Other research grants and contracts		5,182	5,540
1,096	1,096	Scholarships and prizes		1,242	1,242
431	431	Donations and bequests		853	853
2,092	1,870	Investment income	19	1,348	1,176
51,585	36,307	Fees and charges	25	59,552	39,212
12,724	1,279	Other	26	11,205	867
6,706	6,706	Licence Fees-H.pylori project	1(q), 31	1,337	1,337
<b>186,416</b>	<b>159,385</b>	<b>Total Operating Revenues</b>		<b>196,341</b>	<b>165,849</b>
<b>OPERATING EXPENSES</b>					
90,876	90,876	Academic activities	27(i)	94,515	94,640
10,196	10,196	Libraries	27(ii)	6,324	6,356
4,543	4,543	Other academic support services	27(iii)	5,677	5,681
10,863	10,863	Student services	27(iv)	10,611	10,619
285	285	Public services	27(v)	185	185
12,261	12,261	Buildings and grounds	27(vi)	10,384	10,459
17,086	17,086	Administrative and other general institutional services	27(vii)	18,197	18,502
34,758	7,681	Other services	27(viii)	38,624	8,325
6,306	6,306	Provision for future subscription-H.pylori project	1(q), 31	1,337	1,337
<b>187,174</b>	<b>160,097</b>	<b>Total Operating Expenses</b>		<b>185,854</b>	<b>156,104</b>
(758)	(712)	<b>Operating result before Employee Deferred Superannuation and abnormal items</b>		10,487	9,745
<b>Employee Deferred Superannuation</b>					
(5,865)	(5,865)	Deferred income - Government contributions for superannuation		11,967	11,967
5,865	5,865	Deferred employee benefits for superannuation	16	(11,967)	(11,967)
(758)	(712)	<b>Operating result before abnormal items</b>		10,487	9,745
<b>Abnormal Items</b>					
-	-	Miscellaneous	30	(107)	-
<b>(758)</b>	<b>(712)</b>	<b>Operating result after abnormal items</b>	<b>1(a)</b>	<b>10,380</b>	<b>9,745</b>
191,031	185,047	Add accumulated funds at beginning of year	13	190,273	184,335
-	-	Adjustments to opening balance	13	7,481	7,481
191,031	185,047	Adjusted accumulated funds at beginning of year	13	197,754	191,816
<b>190,273</b>	<b>184,335</b>	<b>ACCUMULATED FUNDS AT END OF YEAR</b>		<b>208,134</b>	<b>201,561</b>

The Operating Statement is to be read in conjunction with the notes to and forming part of the accounts on pages 57 to 84.

## STATEMENT OF CASH FLOWS FOR THE YEAR ENDED 31 DECEMBER 1999

Consolidated 1998 \$'000	University 1998 \$'000		Consolidated 1999 \$'000	University 1999 \$'000
<b>CASH FLOWS FROM OPERATING ACTIVITIES</b>				
<b>Inflows</b>				
		Grant revenue		
75,792	75,722	Commonwealth Government grants	82,414	82,414
840	840	NSW State Government grants	1,611	1,611
		Higher Education Contribution Scheme		
5,295	5,295	Student payments	5,402	5,402
22,548	22,548	Higher Education Trust Fund	26,436	26,436
39,821	36,524	Fees	43,312	40,034
2,092	1,870	Interest received	1,347	1,176
31,852	-	Trading - ITC and UniCentre	34,937	-
7,308	6,418	Other	9,256	8,256
<b>Outflows</b>				
(172,755)	(138,293)	Payments to suppliers and employees	(178,957)	(141,462)
(875)	(600)	Interest paid	(684)	(491)
<b>11,918</b>	<b>10,324</b>	<b>NET CASH PROVIDED BY OPERATING ACTIVITIES (refer note B overleaf)</b>	<b>25,074</b>	<b>23,376</b>
<b>CASH FLOWS FROM INVESTING ACTIVITIES</b>				
<b>Inflows</b>				
552	552	Proceeds from investments	24,694	24,694
1,910	1,904	Proceeds from sale of plant and equipment	561	407
400	400	Proceeds from IP Project	-	-
<b>Outflows</b>				
(18,355)	(16,241)	Purchase of property, plant and equipment	(21,201)	(19,726)
-	-	Purchase of investments	(25,218)	(25,218)
<b>(15,493)</b>	<b>(13,385)</b>	<b>NET CASH USED IN INVESTING ACTIVITIES</b>	<b>(21,164)</b>	<b>(19,843)</b>
<b>CASH FLOWS FROM FINANCING ACTIVITIES</b>				
<b>Inflows</b>				
21	21	Repayment of staff loans	6	6
(1)	(1)	Repayment of sundry advances	1	1
20	20	Repayment of other loans	-	-
-	-	Secured loans	2,707	2,373
<b>Outflows</b>				
(1,359)	(598)	Repayment of borrowings	(3,515)	(2,978)
<b>(1,319)</b>	<b>(559)</b>	<b>NET CASH USED BY FINANCING ACTIVITIES</b>	<b>(801)</b>	<b>(598)</b>
(4,894)	(3,620)	Net increase/(decrease) in cash held	3,109	2,935
14,527	10,616	Cash at beginning of reporting period	9,633	6,996
<b>9,633</b>	<b>6,996</b>	<b>CASH AT END OF REPORTING PERIOD (refer note A overleaf)</b>	<b>12,742</b>	<b>9,931</b>

## NOTES TO THE STATEMENT OF CASH FLOWS

### A. Reconciliation of Cash

For the purposes of the Statement of Cash Flows, the University considered cash to include cash on hand and in banks, and investments in the New South Wales Treasury Corporation Hourglass cash and Cash Plus facilities.

Cash at the end of the reporting period as shown in the Statement of Cash Flows is reconciled to the related items in the Balance Sheet as follows:

Consolidated 1998 \$'000	University 1998 \$'000		Consolidated 1999 \$'000	University 1999 \$'000
2,078	(559)	Cash	3,269	458
7,555	7,555	NSW T-Corp Hourglass cash and Cash Plus facilities	9,473	9,473
<b>9,633</b>	<b>6,996</b>		<b>12,742</b>	<b>9,931</b>

### B. Reconciliation of net cash used in operating activities to operating result

Consolidated 1998 \$'000	University 1998 \$'000		Consolidated 1999 \$'000	University 1999 \$'000
(758)	(712)	Operating result before abnormal items	10,487	9,745
(59)	(2,310)	Decrease/(increase) in trade debtors/other debtors	2,053	740
(28)	1	Decrease/(increase) in accrued income	85	85
(57)	(257)	Decrease/(increase) in inventories	29	154
(805)	(514)	Decrease/(increase) in prepayments	(1,114)	(705)
17,592	16,712	Depreciation/Amortisation	14,159	12,758
144	120	Loss/(gain) on sale of plant and equipment	(375)	(598)
5,843	5,865	Decrease/(increase) in deferred income	(11,908)	(11,967)
(1,035)	47	Increase/(decrease) in creditors and accruals	(2,679)	(839)
549	163	Increase/(decrease) in minor works provision	(128)	(448)
(293)	679	Increase/(decrease) in students fees received in advance	967	822
		<b>Provisions</b>		
122	50	Annual leave	71	79
97	122	Doubtful debts	70	100
2,189	2,234	Long service leave	2,537	2,738
(1,817)	(1,817)	State basic benefit superannuation	1,190	1,190
(5,865)	(5,865)	State superannuation	11,967	11,967
282	282	Professorial superannuation	176	176
18	18	Other contributions	21	21
(2,088)	(2,084)	Long-service leave paid	(1,212)	(1,427)
(190)	(190)	Professorial superannuation paid	(195)	(195)
(10)	(10)	Increase/(decrease) in trust funds	4	4
(1,265)	(1,562)	Increase/(decrease) in other income in advance	(7,676)	(7,676)
-	-	Abnormal items	(107)	-
(648)	(648)	Assets adjustments	(1,125)	(1,125)
-	-	Bad debt expense	296	296
-	-	Adjustment to opening accumulated results	7,481	7,481
<b>11,918</b>	<b>10,324</b>	<b>Net cash used in operating activities</b>	<b>25,074</b>	<b>23,376</b>

The Statement of Cash Flows is to be read in conjunction with the notes to and forming part of the accounts on pages 57 to 82.

## NOTES TO AND FORMING PART OF THE FINANCIAL STATEMENTS FOR THE YEAR ENDED 31 DECEMBER 1999

### 1. SUMMARY OF SIGNIFICANT ACCOUNTING POLICIES

#### (a) Basis of accounting

The financial statements presented herein relate to the activities of the University of Wollongong and its controlled entities. In preparing its financial statements the University complied with:

- (i) The Public Finance and Audit Act of 1983 and the Public Finance and Audit (General) Regulation 1995;
- (ii) Australian Accounting Standards and other authoritative pronouncements of the Public Sector Accounting Standards Board and/or the Australian Accounting Standards Board and Urgent Issues Group Consensus Views;
- (iii) The Department of Education, Training and Youth Affairs (DETYA) Instructions For The Preparation of Annual Financial Reports by Australian Higher Education Institution; except for the treatment of grant revenue in advance, which has been brought to account in accordance to AAS 15 on Revenue. Refer to note 1(b)(iii).

The financial statements have been prepared on an accrual basis, on a "going concern" basis and, except where otherwise stated, the measurement base applied is historical cost. These accounts are general purpose financial reports (AAS 6)

The Operating Statement, having been prepared on the above basis, combines a number of funds which, under granting conditions, can be utilised only for specified expenditure purposes. These special funds cannot be allocated to general purpose expenditure categories.

#### (b) Changes in accounting policy and presentation

- (i) Depreciation and useful life of Library Holdings has been reviewed in accordance to AAS 4. As a result of the review by an independent valuer, the library collection was categorised as follows, with the relevant depreciation rate:

Collection Category	Depreciation Rate
Serials - Arts & Creative Arts	3.3%
All Other Serials	5.0%
Monographs - Arts & Creative Arts	5.0%
Monographs - Other	10.0%
Rare Books/Archives & Theses	Appreciated at market value

The change in depreciation rate has resulted in a reduction of depreciation expense of \$3,794m. Useful life is defined as the estimate period of time over which the future economic benefits embodied in the asset are expected to be consumed by the entity.

- (ii) In the current year certain major acquisitions of software has been capitalised and amortised over a three year period. The effect on the change in policy resulted in a reduction in expenses of \$0.599m.
- (iii) The University has adopted the revised AAS 15 Standard on revenue recognition. As a result of the change in the Standard, grant revenue received in advance is considered non-reciprocal revenue, this has been brought to account in the current year as income in the profit and loss statement. In previous years grant revenue received in advance was treated as income in advance in the balance sheet. The following table summarises the effect on income for both the 1999 and 1998 financial years:

	Consolidated	
	1999	1998
	\$	\$
Operating Result prior to AAS 15 change	10,269	(758)
Adjustment to income	218	89
<b>Adjusted Operating Result</b>	<b>10,487</b>	<b>(669)</b>

#### (c) Doubtful debts

Allowance has been made in the accounts for doubtful debts, the provision being calculated on all debts owing to the University and its controlled entities.

#### (d) Employee entitlements

Provision has been made for employee entitlements for annual leave, long-service leave and superannuation in accordance with AAS30. The balance of these provisions at 31 December is categorised for balance sheet purposes as either non-current or current liabilities, the latter component representing an estimate of the extent to which payment is likely to be made during the next twelve (12) months.

In accordance with Treasury guidelines (refer Circular No 10 29/6/95), the University has opted to apply the nominal method to determine the authority's liability for long service leave. The difference arising from the adoption of the nominal value compared to the net present value methodology (as per AAS30) is not considered material.

No provision is made for sick leave as employees are not paid sick leave on resignation or retirement from the University. In addition, the levels of sick leave taken annually does not exceed the yearly entitlement for the University as a whole. However, this situation will be monitored for a change in the trend.

**(e) Valuation of assets**

**(i) Investments**

Investments are shown in the Balance Sheet at market value, note 6 of the accounts disclose investments at face, cost and market values.

**(ii) Property, plant and equipment**

Valuations adopted in respect of property, plant and equipment are as follows:

**Land**

All land has been valued at Valuer General's valuations in 1998. The valuations have been based on existing use.

**Buildings**

All buildings have been valued at independent valuation as assessed by Edward Rushton Australia Ltd, licensed valuers, as at 31 December 1999. The valuations have been determined on the following basis

- there is no land content in the valuations
- written down replacement cost, based on existing use and condition
- a number of normal inclusions such as floor coverings, light fittings, window coverings and other fixtures have been included in the valuations
- the sizes of buildings have been determined from plans provided by the University, subject to random checking

This revaluation has been undertaken as part of a 3 year program.

**Works of Art**

All works of art have been valued at independent valuation as assessed by Mr John Baily, A.M., Government approved valuer as at 31 December 1996. The valuations have been based on market values.

**Library Holdings**

The Library book collection was valued as at 01/01/99 by independent valuation as assessed by Mrs Barbara Hince. The valuation has been based on the deprival concept. The methodology used in the application of the deprival concept has been formulated to meet the accounting standards. Any additions are capitalised at cost.

**Other**

Motor vehicles and equipment are valued at acquisition cost. Market values are considered to equate with written down values. See note 4 (v). The University capitalises only those assets over \$ 2,000.

**Infrastructure**

All infrastructure assets have been valued by Edward Rushton Australia Ltd, licensed valuers, as at 31 December 1999 on the basis of written down replacement value.

**(iii) Inventory**

All inventory is valued at the lower of cost or net realisable value, using specific identification method. The cost of Personal Computer stock includes freight.

**(f) Gains/Losses on disposal of assets**

Gains and losses on disposal of assets are recognised in the accounts in the period in which the disposal of the asset occurs. In 1999, gross proceeds from the sale of assets were \$0.561m (1998 \$1.904m).

**(g) Depreciation**

Depreciation is calculated on a straight-line basis so as to write off each non-current asset during its expected useful life. Additions are depreciated from the date of acquisition.

Depreciation on the University's assets has been calculated at the following rates:

Buildings & improvements	Variable (depending on estimated useful life)
Computer equipment	20.00%
Motor vehicles	10.00%
Other equipment	10.00%
Library	Variable depended on category refer note 1 (b)
Infrastructure	5.00%

The controlled entities depreciation rates may vary slightly from the above quoted rates, but the variation is not considered material.

(h) **Insurance**

The University and its controlled entities do not self-insure but arrange external insurance cover for property, general liability, professional indemnity, accident and workers' compensation, directors and officers. Buildings are insured at replacement value.

(i) **Financial transfers for minor works**

Section 8 of the Higher Education Funding Act, 1988, allows financial transfers to special funds which are to be used only for future expenditure on equipment or minor building projects of the University to be treated as expenditure for operating purposes in the year in which the amount is transferred.

The following transfers were made to special funds accounts:-

Consolidated 1998 \$'000	University 1998 \$'000		Consolidated 1999 \$'000	University 1999 \$'000
3,405	3,405	Minor Works	(85)	(85)
<b>3,405</b>	<b>3,405</b>		<b>(85)</b>	<b>(85)</b>

A summary of movements in the special funds is shown in note 7 (iv)

(j) **Leases**

The University leases certain property and equipment by way of operating leases. Payment for these leases, whereby the lessors effectively retain substantially all the risks and benefits of ownership of the leased item, are charged to the income and expenditure statement in the periods in which they are incurred.

(k) **Rounding**

All amounts in the financial statements have been rounded to the nearest thousand dollars, as indicated, unless shown otherwise.

(l) **Foreign Currency Translation**

**Transactions and Balances**

Foreign currency transactions during the year are converted to Australian currency at the rates of exchange applicable at the dates of the transactions.

Any variations from foreign currency transactions outstanding at balance date are considered to be immaterial.

**Specific Commitments**

Illawarra Technology Corporation Limited has a policy of foreign exchange risk management specifically to minimise risk relating to contracts denominated in foreign currencies. Major incoming funds under foreign currency denominated contracts are covered by forward exchange contracts at the time the contract cash flow pattern is determined.

(m) **Revenue Recognition**

All revenue is recognised in the year to which it relates with the exception of DETYA grants which have been brought to account in the year of receipt. This is a change to prior period to reflect amendments to AAS 15, ref note 1(b)(iii).

(n) **Capital and Maintenance Expenditure**

All major building works are capitalised. All other maintenance and minor refurbishment is expensed in the year.

(o) **Financial Instruments**

Financial instruments give rise to positions that are a financial asset of either the University or its counterparty and a financial liability (or equity instrument) of the other party. For the University, these include cash at bank, receivables, investments, creditors, borrowings, and derivative financial instruments.

In accordance with AAS 33 (AASB 1033) "Presentation and Disclosure of Financial Instruments" information is disclosed in Note 17, in respect of credit risk and the interest rate risk of financial instruments. All such amounts are carried in the accounts at net fair value unless otherwise stated. The specific accounting policy in respect of each class of such financial instrument is stated hereunder.

Classes of instruments recorded at cost comprise :

- cash
- receivables
- borrowings

Classes of instruments recorded at market value comprise :

- government bonds
- Unlisted shares - carried at directors' discretion

Except for the following, all financial instruments including revenue, expenses or other cash flows arising from instruments are recognised on an accrual basis :

- Derivative financial instruments

**(p) Accounts Receivable and Accounts Payable**

Trade accounts receivable generally settled within 60 days are carried at amounts due. A provision is raised for any doubtful debts based on a review of all outstanding amounts at balance date. Bad debts are written off in the period in which they are identified.

Trade accounts payable, including accruals not yet billed, are recognised when the University becomes obliged to make future payments as a result of a purchase of assets or services. Trade accounts payable are generally settled in 30 days. The University considers the carrying amounts of trade and other accounts payable to approximate their net fair values.

**(q) Research and Development Syndication**

In December 1997, the University of Wollongong entered into a syndicate whereby it is contracted for a period to carry out research and development on a specific project. In consideration for the intellectual property owned by the University of Wollongong an amount of \$24.3m has been received over two accounting periods. From the funds, a transfer was made to a syndicate member to fund part "B" technology. In 1999, the amount of \$1.337m was received (1998 \$6.306m) as interest and deposited in the security deposit account.

In the Annual Accounts of the University the license fee received and the expense for future subscription has been shown separately due to the materiality of the amounts. In the Balance Sheet, consideration has been given to Australian Accounting Standard AAS 23 where the non-current asset showing the security deposit has been set-off against the non-current liability for the provision for future subscription.

**2. CONTROLLED ENTITIES**

The results from operations after abnormal items in respect of entities controlled by the University are as follows:-

	31 Dec 1998 \$'000	31 Dec 1999 \$'000
(i) Illawarra Technology Corporation Ltd Sydney Business School Limited ( Non trading since incorporation 12th March 1998) (Wound up during 1999)	(694)	51
(ii) Wollongong UniCentre Limited	507	361
(iii) University of Wollongong Recreation & Aquatic Centre Limited	140	225
(iv) University of Wollongong Foundation Limited	Nil	Nil

**Note:** Brackets signify a loss

Basis for control of the above entities is as follows:

**(i) Illawarra Technology Corporation Ltd**

- 100% equity in 2 (two) fully paid shares of \$1.00
- University Council appoints the Board of Directors of the Company

**Sydney Business School Limited (Non trading since incorporation 12th March 1998), wound up during 1999**

- The University has control of this entity through the ownership of the Illawarra Technology Corporation Ltd

**(ii) Wollongong UniCentre Limited**

- General Manager of the UniCentre is appointed by the University
- The UniCentre budget is approved by the University Council
- No alteration to the constitution of the UniCentre can be made without the approval of the Council
- UniCentre constitution indicates it is an integral part of the University

(iii) **University of Wollongong Recreation & Aquatic Centre Limited (URAC) (incorporated June 1998)**

(formally University Of Wollongong Recreation and Sports Association)

- The URAC budget is approved by the University Council

- No alteration to the constitution of URAC can be made without the approval of the Council

(iv) **University of Wollongong Foundation Limited**

- Council of the University has control over the expenditure of any moneys (other than in the ordinary course of the day-to-day administration of the Foundation).

- Corporations or individuals may become members of the Foundation by donating funds to the University in accordance with levels set out in the Memorandum and Articles of Association of the company. It is made clear to all donors that the funds are raised for the University and that donations must be made directly to the University.

- For the year ended 31 December, 1999 donations and scholarships of \$0.735m were made to the University as a result of the Foundation's activities (1998 \$0.631m).

### 3. CURRENT ASSETS

Consolidated 1998 \$'000	University 1998 \$'000		Consolidated 1999 \$'000	University 1999 \$'000
<b>(i) Cash</b>				
1,234	(599)	Cash at bank	2,716	427
-	-	Student trust account	22	-
844	40	Cash on hand and on deposit	531	31
<b>2,078</b>	<b>(559)</b>		<b>3,269</b>	<b>458</b>
<b>(ii) Receivables</b>				
4,531	4,342	Debtors	4,957	3,907
(469)	(431)	Less provision for doubtful debts	(540)	(531)
4,062	3,911		4,417	3,376
1	1	Sundry advances	-	-
318	283	Accrued income	202	198
1,715	2,054	Other	1,319	1,750
<b>6,096</b>	<b>6,249</b>		<b>5,938</b>	<b>5,324</b>
<b>(iii) Investments</b>				
24,694	24,694	Government & semi-government securities - unquoted (refer note 6)	-	-
7,555	7,555	NSW Treasury Corporation Hourglass Facility	9,473	9,473
-	-	National Australia Bank Investment Management Fund	25,218	25,218
<b>32,249</b>	<b>32,249</b>		<b>34,691</b>	<b>34,691</b>
<b>(iv) Inventories</b>				
15	15	Central store	10	10
933	933	Personal computers	871	871
70	13	Catering stock	64	14
1,638	2	Other	1,768	-
-	-	Less provision for obsolete stock	(87)	(87)
<b>2,656</b>	<b>963</b>		<b>2,626</b>	<b>808</b>
<b>(v) Other</b>				
1,569	974	Prepayments	2,536	1,679
104	-	Other	18	-
<b>1,673</b>	<b>974</b>		<b>2,554</b>	<b>1,679</b>

#### 4. NON-CURRENT ASSETS

Consolidated 1998 \$'000	University 1998 \$'000		Consolidated 1999 \$'000	University 1999 \$'000
<b>(i) Investments</b>				
21	-	International English Language Testing System Aust Pty Ltd	21	-
10	-	DP Education Australia Ltd	10	-
-	-	SSAU Nominees Pty Ltd - One (1) share at par \$1	-	-
-	-	The Illawarra Technology Corporation Ltd \$2	-	-
<b>31</b>	<b>-</b>		<b>31</b>	<b>-</b>
<b>(ii) Receivables</b>				
52,667	52,667	Amount owing by Commonwealth/State Governments (refer note 16)	40,700	40,700
-	332	Loans to UniCentre	-	314
35	35	Loans to staff (refer note 5)	30	30
<b>52,702</b>	<b>53,034</b>		<b>40,730</b>	<b>41,044</b>
<b>(iii) Other</b>				
-	-	Prepaid Super contributions (refer note 10(vi))	5,756	5,756
<b>-</b>	<b>-</b>		<b>5,756</b>	<b>5,756</b>
<b>(iv) Intangibles</b>				
-	-	Computer system & software	680	680
-	-	Accumulated amortisation	(81)	(81)
-	-		599	599
103	-	Goodwill - UniCentre (newsagency)	103	-
(82)	-	Accumulated amortisation	(93)	-
21	-		10	-
<b>21</b>	<b>-</b>		<b>609</b>	<b>599</b>

#### (v) Property, Plant and Equipment

The following summarises the asset by class, cost of asset, accumulated depreciation, written down value and market value.

<b>Buildings and improvements</b>				
202,778	200,549	Valuation	247,407	244,551
(14,398)	(13,502)	Accumulated depreciation	(1,077)	-
<b>188,380</b>	<b>187,047</b>	<b>Written down value</b>	<b>246,330</b>	<b>244,551</b>
188,380	187,047	Market value	246,330	244,551
<b>Land</b>				
9,640	9,640	Cost/Valuation	9,640	9,640
-	-	Accumulated depreciation	-	-
<b>9,640</b>	<b>9,640</b>	<b>Written down value</b>	<b>9,640</b>	<b>9,640</b>
9,640	9,640	Market value	9,640	9,640
<b>Works of art</b>				
1,521	1,521	Cost/Valuation	1,483	1,483
-	-	Accumulated depreciation	-	-
<b>1,521</b>	<b>1,521</b>	<b>Written down value</b>	<b>1,483</b>	<b>1,483</b>
1,521	1,521	Market value	1,483	1,483
<b>Library holdings</b>				
44,551	44,551	Cost/Valuation	14,169	14,169
(34,877)	(34,877)	Accumulated depreciation	(846)	(846)
<b>9,674</b>	<b>9,674</b>	<b>Written down value</b>	<b>13,323</b>	<b>13,323</b>
9,674	9,674	Market value	13,323	13,323
<b>Computer equipment</b>				
11,088	8,867	Cost	11,804	9,695
(6,754)	(5,416)	Accumulated depreciation	(6,705)	(5,278)
<b>4,334</b>	<b>3,451</b>	<b>Written down value</b>	<b>5,099</b>	<b>4,417</b>
4,334	3,451	Market value	5,099	4,417

Consolidated 1998 \$'000	University 1998 \$'000		Consolidated 1999 \$'000	University 1999 \$'000
		<b>Motor vehicles</b>		
1,587	1,212	Cost	1,181	848
(579)	(418)	Accumulated depreciation	(506)	(330)
<b>1,008</b>	<b>794</b>	<b>Written down value</b>	<b>675</b>	<b>518</b>
1,008	794	Market value	675	518
		<b>Other equipment</b>		
32,573	28,976	Cost	34,639	31,451
(14,389)	(12,432)	Accumulated depreciation	(15,619)	(13,698)
<b>18,184</b>	<b>16,544</b>	<b>Written down value</b>	<b>19,020</b>	<b>17,753</b>
18,184	16,544	Market value	19,020	17,753
		<b>Infrastructure Assets</b>		
17,737	17,737	Valuation	8,759	8,759
(1,730)	(1,730)	Accumulated depreciation	-	-
<b>16,007</b>	<b>16,007</b>	<b>Written down value</b>	<b>8,759</b>	<b>8,759</b>
16,007	16,007	Market value	8,759	8,759
		<b>Total property, plant and equipment</b>		
321,475	313,053	Cost/valuation	329,082	320,596
(72,727)	(68,375)	Accumulated depreciation	(24,753)	(20,152)
<b>248,748</b>	<b>244,678</b>	<b>Written down value</b>	<b>304,329</b>	<b>300,444</b>

The following table summarises by class, the movement in the asset during 1999.

		<b>Buildings and improvements</b>		
188,967	188,119	Opening balance	188,380	187,047
-	-	Adjustments	-	-
<b>188,967</b>	<b>188,119</b>	<b>Adjusted opening balance</b>	<b>188,380</b>	<b>187,047</b>
-	-	Revaluation	52,355	52,355
6,633	5,989	Purchases	13,005	12,378
(7,220)	(7,061)	Depreciation	(7,410)	(7,229)
-	-	Disposals	-	-
<b>188,380</b>	<b>187,047</b>	<b>Closing balance</b>	<b>246,330</b>	<b>244,551</b>
		<b>Land</b>		
9,308	9,308	Opening balance	9,640	9,640
-	-	Adjustments	-	-
<b>9,308</b>	<b>9,308</b>	<b>Adjusted opening balance</b>	<b>9,640</b>	<b>9,640</b>
301	301	Revaluation	-	-
31	31	Purchases	-	-
-	-	Depreciation	-	-
-	-	Disposals	-	-
<b>9,640</b>	<b>9,640</b>	<b>Closing balance</b>	<b>9,640</b>	<b>9,640</b>
		<b>Works of art</b>		
1,445	1,445	Opening balance	1,521	1,521
-	-	Adjustments	-	-
<b>1,445</b>	<b>1,445</b>	<b>Adjusted opening balance</b>	<b>1,521</b>	<b>1,521</b>
-	-	Revaluation	-	-
76	76	Purchases	37	37
-	-	Depreciation	-	-
-	-	Disposals	(75)	(75)
<b>1,521</b>	<b>1,521</b>	<b>Closing balance</b>	<b>1,483</b>	<b>1,483</b>
		<b>Library holdings</b>		
12,332	12,332	Opening balance	9,674	9,674
-	-	Adjustments	-	-
<b>12,332</b>	<b>12,332</b>	<b>Adjusted opening balance</b>	<b>9,674</b>	<b>9,674</b>
-	-	Revaluation	2,384	2,384
2,739	2,739	Purchases	2,111	2,111
(5,397)	(5,397)	Depreciation	(846)	(846)
-	-	Disposals	-	-
<b>9,674</b>	<b>9,674</b>	<b>Closing balance</b>	<b>13,323</b>	<b>13,323</b>

Consolidated 1998 \$'000	University 1998 \$'000		Consolidated 1999 \$'000	University 1999 \$'000
		<b>Computer equipment</b>		
2,356	1,961	Opening balance	4,334	3,451
139	139	Adjustments	120	120
<b>2,495</b>	<b>2,100</b>	<b>Adjusted opening balance</b>	<b>4,454</b>	<b>3,571</b>
-	-	Revaluation	-	-
3,224	2,420	Purchases	2,546	2,276
(1,183)	(897)	Depreciation	(1,766)	(1,365)
(202)	(172)	Disposals	(135)	(65)
<b>4,334</b>	<b>3,451</b>	<b>Closing balance</b>	<b>5,099</b>	<b>4,417</b>
		<b>Motor vehicles</b>		
2,306	2,064	Opening balance	1,008	794
243	243	Adjustments	-	-
<b>2,549</b>	<b>2,307</b>	<b>Adjusted opening balance</b>	<b>1,008</b>	<b>794</b>
-	-	Revaluation	-	-
613	530	Purchases	293	171
(253)	(192)	Depreciation	(128)	(94)
(1,901)	(1,851)	Disposals	(498)	(353)
<b>1,008</b>	<b>794</b>	<b>Closing balance</b>	<b>675</b>	<b>518</b>
		<b>Other equipment</b>		
16,574	15,247	Opening balance	18,184	16,544
281	281	Adjustments	(150)	48
<b>16,855</b>	<b>15,528</b>	<b>Adjusted opening balance</b>	<b>18,034</b>	<b>16,592</b>
-	-	Revaluation	-	-
4,588	3,920	Purchases	4,520	4,100
(2,587)	(2,290)	Depreciation	(2,720)	(2,429)
(672)	(614)	Disposals	(814)	(510)
<b>18,184</b>	<b>16,544</b>	<b>Closing balance</b>	<b>19,020</b>	<b>17,753</b>
		<b>Infrastructure Assets</b>		
16,205	16,205	Opening balance	16,007	16,007
-	-	Adjustments	-	-
<b>16,205</b>	<b>16,205</b>	<b>Adjusted opening balance</b>	<b>16,007</b>	<b>16,007</b>
-	-	Revaluation	(6,361)	(6,361)
679	679	Purchases	-	-
(877)	(877)	Depreciation	(887)	(887)
-	-	Disposals	-	-
<b>16,007</b>	<b>16,007</b>	<b>Closing balance</b>	<b>8,759</b>	<b>8,759</b>

Market values have been based on the following:-

All buildings and infrastructure have been valued at independent valuation as assessed by Edward Rushton Australia Ltd on the basis of written down replacement value as at 31 December 1999.

Land is included in the accounts at current valuations as assessed by the Valuer General and is considered to represent current market value. All land is owned by the University.

Other assets are valued at cost and, with the exception of works of art, are depreciated. The written-down value of these assets represents an estimate of their current market value. Works of art have been valued at independent valuation as assessed by Mr John Bailey, A.M., government approved valuer, and dated 31 December 1996.

Adjustments to opening balances are due to reclassification between types of assets and adjustments for assets disposed of in previous years.

## 5. LOANS TO STAFF AND STUDENTS

In 1984 the University established a Housing Loan Scheme for staff at Professorial level with a maximum loan available of \$0.030m. Outstanding loans at the end of the financial year amounted to \$0.030m (1998 \$0.035m).

Loans were also made available to students with \$ NIL outstanding at the end of the financial year (1998 \$0.006m)

These loans are no longer available.

## 6. INVESTMENTS

Summary of portfolio as at the end of the financial year:-

	Face Value \$'000	University 1999 Cost \$'000	Market Value \$'000
<b>By Class</b>			
Government and semi-government securities			
Unquoted	33,803	34,493	34,691
1 share - SSAU Nominees Pty Ltd \$1	-	-	-
2 shares - ITC \$2	-	-	-
	3,803	34,493	34,691
<b>By Maturity Date</b>			
Not later than one year*	33,803		
Later than 1 year but not later than 2 years	-		
Later than 2 years but not later than 5 years	-		
	<b>33,803</b>		

	Face Value \$'000	Consolidated 1999 Cost \$'000	Market Value \$'000
<b>By Class</b>			
Government and semi-government securities			
Unquoted	33,803	34,493	34,691
1 share in SSAU Nominees Pty Ltd \$1	-	-	-
2 shares - ITC \$2	-	-	-
Shares in IELTS Australia Pty Ltd	21	21	21
Shares in IDP Education Australia Ltd	10	10	10
	<b>33,834</b>	<b>34,524</b>	<b>34,722</b>
<b>By Maturity Date</b>			
Not later than one year*	33,803		
Later than 1 year but not later than 5 years	-		
After five years	31		
	<b>33,834</b>		

\* Funds are invested with the NSW Treasury Corporations Cash Plus facility for cash \$9.473m and National Australia Bank Investment Management Facility for \$25.218m. The T-Corp funds are held in cash and bank bills and are available at call. The NAB funds are held in a mix of Government and semi-government securities plus domestic discounted securities.

## 7. CURRENT LIABILITIES

Consolidated 1998 \$'000	University 1998 \$'000		Consolidated 1999 \$'000	University 1999 \$'000
<b>(i) Creditors</b>				
10,092	6,925	<b>Creditors and accrued expenses</b>	9,253	6,085
<b>(ii) Borrowings</b>				
-	-	National Australia Bank - Overdraft	334	-
4,700	4,700	National Australia Bank - fixed rate bill facility (refer note 9)	4,800	4,300
102	102	National Australia Bank - fixed rate instalment loan	-	-
2,475	2,475	National Australia Bank - interest only	-	-
660	-	National Australia Bank - bill facility (refer note 9)	2,573	2,373
18	18	Commonwealth Department of Health & Community Services	18	18
<b>7,955</b>	<b>7,295</b>		<b>7,725</b>	<b>6,691</b>

Consolidated 1998 \$'000	University 1998 \$'000		Consolidated 1999 \$'000	University 1999 \$'000
<b>(iii) Summary of Accrued Liabilities</b>				
2,099	1,700	Provision for long-service leave (refer note 10(ii))	1,655	1,500
190	190	Provision for Professorial Superannuation (refer note 10(i))	190	190
3,607	2,825	Provision for annual leave (refer note 10 (iv))	3,672	2,905
924	924	Special funds (refer note 7 (iv))	476	476
14,304	11,738	Income in advance (refer note 7 (v))	7,738	4,986
-	-	Other	161	-
<b>21,124</b>	<b>17,377</b>		<b>13,892</b>	<b>10,157</b>

**(iv) Special Funds (refer note 1(i))**

	1998 Total \$'000		University 1999 Minor Works \$'000
	761	Balance at beginning of the financial year	923
	3,405	Transfer from recurrent funds	(85)
	<b>4,166</b>		<b>838</b>
	(3,242)	Less: Payments	(362)
	<b>924</b>	<b>Balance at end of the financial year</b>	<b>476</b>

**(v) Income received in advance**

Consolidated 1998 \$'000	University 1998 \$'000		Consolidated 1999 \$'000	University 1999 \$'000
7,525	7,481	Commonwealth Government grants	-	-
6,546	4,037	Student fees	4,859	4,859
233	220	Other	2,879	127
<b>14,304</b>	<b>11,738</b>		<b>7,738</b>	<b>4,986</b>

**8. NON-CURRENT LIABILITIES**

**(i) Borrowings**

Consolidated 1998 \$'000	University 1998 \$'000		Consolidated 1999 \$'000	University 1999 \$'000
-	-	National Australia Bank - fixed rate instalment loans	800	-
2,360	-	National Australia Bank - bill facility	1,000	-
314	314	Department of Health & Community Services	296	296
<b>2,674</b>	<b>314</b>		<b>2,096</b>	<b>296</b>

**(ii) Accrued Liabilities**

11,404	10,970	Provision for long-service leave (refer note 10 (ii))	13,338	12,380
52,456	52,456	Provision for State superannuation (refer note 10 (iii))	46,455	46,455
5,285	5,285	Provision for Professorial superannuation (refer note 10 (i))	5,287	5,287
589	589	Provision for Basic Benefit superannuation (refer note 10 (v))	1,779	1,779
-	7,640	Income in advance (refer note 8 (iii))	-	7,538
219	219	Trust funds (refer note 11)	223	223
<b>69,953</b>	<b>77,159</b>		<b>67,082</b>	<b>73,662</b>

## (iii) Income in advance

Consolidated 1998 \$'000	University 1998 \$'000		Consolidated 1999 \$'000	University 1999 \$'000
-	8,222	Contribution to occupancy	-	8,435
-	(582)	Less: amortisation	-	(897)
-	<b>7,640</b>		-	<b>7,538</b>

Contributions made by the Wollongong UniCentre and Recreation & Aquatic Centre towards buildings on land owned by the University of Wollongong are treated as income in advance. This liability is amortised at rates equal to the depreciation rates relevant to the building.

## 9. SECURED LOANS AND ADVANCES

University 1998 Total \$'000		0 - 1 years	1-2 years	University 1999 2 - 5 years	Total \$'000
	<b>(i) Loans by maturity date</b>				
4,700	a) NAB - fixed rate bill facility	4,300	-	-	4,300
102	b) NAB - fixed rate instalment loan	-	-	-	-
2,475	c) NAB - interest only	-	-	-	-
-	d) NAB - bill facility	2,373	-	-	2,373
332	e) DHCS-interest free	18	18	278	314
<b>7,609</b>	<b>Total</b>	<b>6,691</b>	<b>18</b>	<b>278</b>	<b>6,987</b>

Consolidated 1998 Total \$'000		0 - 1 years	1-2 years	Consolidated 1999 2 - 5 years	Total \$'000
	<b>(ii) Loans by maturity date</b>				
4,700	a) NAB - fixed rate bill facility	4,300	-	-	4,300
102	b) NAB - fixed rate instalment loan	500	500	300	1,300
2,475	c) NAB - interest only	-	-	-	-
3,020	d) NAB - Bill facility	2,573	350	650	3,573
-	e) NAB - Overdraft	334	-	-	334
332	f) DHCS-interest free	18	18	278	314
<b>10,629</b>	<b>Total</b>	<b>7,725</b>	<b>868</b>	<b>1,228</b>	<b>9,821</b>

Consolidated 1998 \$'000	University 1998 \$'000		Consolidated 1999 \$'000	University 1999 \$'000
7,955	7,295	Comprising:-		
2,674	314	Current liabilities (refer note 7 (ii))	7,725	6,691
		Non-current liabilities (refer note 8 (i))	2,096	296
<b>10,629</b>	<b>7,609</b>		<b>9,821</b>	<b>6,987</b>

- (a) The bill facilities for \$4.3m are rolled over every 180 days and have a term of five years. It was taken out to assist in the purchase of the ITC building.
- (b)+(c) In the previous period, the National Australia Bank interest-only loan which for for student accommodation and has a five year term. It was secured by way of mortgage over the properties known as International House and Weerona. This has been replaced by a bill facility of \$2.373m.
- (d) The bill facilities are rolled over every 180 days and have a term of five years. These funds are used to fund capital works and are secured by way of mortgage over fees payable by the University to the entities and letters of undertaking from the University. The entities and NAB have agreed on set dates for partial settlement over the coming years.
- (e)+(f) The 20 year interest free loan from the Commonwealth Department of Health & Community Services is to fund extensions to the Kids Uni. It is offset by a loan to the Kids Uni for a corresponding amount and on the same repayment basis.

## 10. PROVISIONS FOR DEFERRED EMPLOYEE ENTITLEMENTS

### (i) Professorial Superannuation Scheme

The Professorial Superannuation Scheme was established to provide members with a pension of up to 25 percent of salary on retirement. In 1984 the Scheme was amended to provide for the payment of an additional contributory pension to members of the Scheme on retirement. The Scheme was closed to new members on 1 December 1987.

In a report prepared by Mercer Campbell Cook and Knight dated 20 January 1995, the University's liability at 1 January 1995 in respect of unfunded service was actuarially assessed at \$3.195m based on membership of the fund at 1 January 1995. Assumptions adopted by the Actuary in determining this liability were:-

Rate of salary increase :	6.00 %
Rate of investment return:	8.00 %
Rate of increase of pensions:	6.00 %

It is anticipated that actuarial reviews of the Scheme will be undertaken every 3 years.

Movements in the provision during the year were:

Consolidated 1998 \$'000	University 1998 \$'000		Consolidated 1999 \$'000	University 1999 \$'000
5,368	5,368	Balance at the beginning of the financial year	5,475	5,475
125	125	Add contributions		
157	157	employee contribution	103	103
282	282	interest earnings from investments	73	73
			176	176
15	15	contributions from members for optional contributory 5% pension scheme	21	21
15	15		21	21
(190)	(190)	Less payments	(195)	(195)
<b>5,475</b>	<b>5,475</b>	<b>Balance at the end of the financial year</b>	<b>5,477</b>	<b>5,477</b>
		Comprising:		
190	190	Current liabilities (refer note 7 (iii))	190	190
5,285	5,285	Non-current liabilities (refer note 8 (ii))	5,287	5,287
<b>5,475</b>	<b>5,475</b>		<b>5,477</b>	<b>5,477</b>

### (ii) Long-Service Leave

13,066	12,517	Balance at the beginning of the financial year	13,503	12,669
-	-	Add adjustment to accumulated funds	-	-
<b>13,066</b>	<b>12,517</b>	<b>Amended balance at the beginning of the financial year</b>	<b>13,503</b>	<b>12,669</b>
1,513	1,221	Add: contributions	1,519	1,194
468	466	unfunded liability brought to account	1,250	1,250
547	547	interest earnings from investments	294	294
<b>2,528</b>	<b>2,234</b>		<b>3,063</b>	<b>2,738</b>
3	3	transfer of entitlements from other contributions	(20)	-
3	3		(20)	-
(2,094)	(2,084)	Less payments	(1,553)	(1,427)
<b>13,503</b>	<b>12,670</b>	<b>Balance at the end of the financial year</b>	<b>14,993</b>	<b>13,980</b>
		Comprising:		
2,099	1,700	Current liabilities (refer note 7 (iii))	1,655	1,600
11,404	10,970	Non-current liabilities (refer note 8 (ii))	13,338	12,380
<b>13,503</b>	<b>12,670</b>		<b>14,993</b>	<b>13,980</b>

(iii) State Superannuation Scheme (SSS)

The University contributes to the New South Wales State Superannuation Fund in respect of present and former members of staff who are or were members of the fund. In a letter dated 19 January 2000 from the Superannuation Administration Authority the University was advised that its gross liability at 31 December 1999 had been actuarially assessed at \$99.849m (1998 \$96.440m). Of this amount \$53.394m is held by the Superannuation Administration Authority. The remaining liability of \$46.455m is unfunded and had been brought to account as an amount owing by the Commonwealth/State governments.

Assumptions adopted by the Authority's Actuary in determining the University's liability were:-

	1999/2000	2000/2001	2001/2002	Thereafter
Rate of salary increase (% per annum)	4.0	5.0	5.0	5.0
Rate of increase in the Consumer Price Index (% per annum)	2.5	3.3	3.3	3.3
Interest rate (% per annum)	7.0	7.0	7.0	7.0

Movements in the provision during the year were:-

Consolidated 1998 \$'000	University 1998 \$'000		Consolidated 1999 \$'000	University 1999 \$'000
50,350	50,350	Balance at the beginning of the financial year	52,456	52,456
2,106	2,106	Increase/(decrease) in amount unfunded	(6,001)	(6,001)
<b>52,456</b>	<b>52,456</b>		<b>46,455</b>	<b>46,455</b>
-	-	Comprising:	-	-
-	-	Current liabilities	-	-
52,456	52,456	Non-current liabilities (refer note 8 (ii))	46,455	46,455
<b>52,456</b>	<b>52,456</b>		<b>46,455</b>	<b>46,455</b>

(iv) Annual Leave

The University has a liability for untaken annual leave for non-academic staff. In accordance with contracts of employment, academic staff are required to take annual leave each year and no annual leave is accrued. Payments for leave taken in-service or on termination are charged to current revenue. Refer note 7 (iii).

Movements in the provision during the year were:

Consolidated 1998 \$'000	University 1998 \$'000		Consolidated 1999 \$'000	University 1999 \$'000
3,431	2,775	Balance at the beginning of the financial year	3,607	2,825
-	-	Add adjustment to accumulated funds	-	-
3,431	2,775	Amended balance at the beginning of the financial year	3,607	2,825
176	50	Increase in provision	65	80
<b>3,607</b>	<b>2,825</b>		<b>3,672</b>	<b>2,905</b>

(v) State Authorities Non-Contributory Superannuation Scheme (SANCS)

The University contributes to the New South Wales State Authorities Non-Contributory Superannuation Scheme for the 3% productivity (basic benefit) superannuation in respect of members of staff who are non-contributory members of the fund. The fund was closed to new members of the University from 8 December 1992. In accordance with funding requests, the University contributes an amount equivalent to 2.5% of members salaries. In a letter dated 19 January 2000 from the Superannuation Administration Authority, the University was advised that its gross liability at 31 December 1999 had been actuarially assessed at \$5.576m (1998 \$5.090m). Of this amount, \$3.798m is held in by the Superannuation Administration Authority. The remaining amount of \$1.778m has been brought to account as an unfunded liability.

Assumptions adopted by the Authority's Actuary in determining the University's liability were:-

	1999/2000	2000/2001	2001/2002	Thereafter
Rate of salary increase (% per annum)	4.0	5.0	5.0	5.0
Rate of increase in the Consumer Price Index (% per annum)	2.5	3.3	3.3	3.3
Interest rate (% per annum)	7.0	7.0	7.0	7.0

Movements in the provision during the year were:-

Consolidated 1998 \$'000	University 1998 \$'000		Consolidated 1999 \$'000	University 1999 \$'000
2,406	2,406	Balance at beginning of year	589	589
(1,817)	(1,817)	Increase/(decrease) in amount unfunded	1,190	1,190
<b>589</b>	<b>589</b>	<b>Balance at the end of the financial year</b>	<b>1,779</b>	<b>1,779</b>
		Comprising:		
		Current liabilities	-	-
589	589	Non-current liabilities (refer note 8 (iii))	1,779	1,779
<b>589</b>	<b>589</b>		<b>1,779</b>	<b>1,779</b>

In addition to the above scheme, the University contributes a minimum amount of 3% of members' salaries to the Tertiary Education Superannuation Scheme (TESS) in respect of members of that scheme. TESS has undertaken the liability for employee benefits for staff who are members of that scheme. The amount paid in 1999 was \$0.96m (University 1998 \$0.86m).

#### (vi) State Authorities Superannuation Scheme

The University contributes to the New South Wales State Superannuation Scheme in respect of present and former members of staff who are or were members of the fund. The fund was closed to new members on 31 March 1988. In a letter dated 19 January 2000 from the Superannuation Administration Authority the University was advised that its gross liability at 31 December 1999 had been actuarially assessed at \$10.890m (1998 \$10.010m). Of this amount \$16.646m is held by the Superannuation Administration Authority, the remaining amount of \$5.750m has been brought to account as prepaid liability.

Assumptions adopted by the Authority's Actuary in determining the University's liability were:-

	1999/2000	2000/2001	2001/2002	Thereafter
Rate of salary increase (% per annum)	4.0	5.0	5.0	5.0
Rate of increase in the Consumer Price Index (% per annum)	2.5	3.3	3.3	3.3
Interest rate (% per annum)	7.0	7.0	7.0	7.0

Movements in the provision during the year were:-

(3,494)	(3,494)	Balance at the beginning of the financial year	209	209
3,703	3,703	Increase/(decrease) in amount unfunded	(5,965)	(5,965)
<b>209</b>	<b>209</b>		<b>(5,756)</b>	<b>(5,756)</b>
		Comprising:		
		Current liabilities	-	-
209	209	Non-current liabilities (refer note 4 (iii))	(5,756)	(5,756)
<b>209</b>	<b>209</b>		<b>(5,756)</b>	<b>(5,756)</b>

#### (vii) Superannuation Guarantee Levy

Commencing 1 July 1992, the University became liable for superannuation contributions for the Superannuation Guarantee Levy. Under the legislation the University contributes superannuation at a minimum rate for all employees. For 1999, this rate was equivalent to 7% of salaries. The amount paid in 1999 was \$1.065m (University 1998 \$1.068m).

#### (viii) Superannuation Scheme for Australian Universities

The superannuation scheme currently available to staff members is the superannuation Scheme for Australian Universities (SSAU). This is a defined benefit superannuation scheme with the entitlements of the scheme being fully met by SSAU from contributions paid by the University and its employees.

## 11. TRUST FUNDS - WIDOWS MANAGED FUNDS

Movements in the funds during the year were:

Consolidated 1998 \$'000	University 1998 \$'000		Consolidated 1999 \$'000	University 1999 \$'000
229	229	Balance at the beginning of the financial year	219	219
15	15	Add: Interest earnings from investments	7	7
<b>244</b>	<b>244</b>		<b>226</b>	<b>226</b>
(25)	(25)	Less payments	(3)	(3)
<b>219</b>	<b>219</b>	<b>Balance at the end of the financial year</b>	<b>223</b>	<b>223</b>
-	-	Comprising:	-	-
-	-	Current liabilities	-	-
219	219	Non-current liabilities	223	223
<b>219</b>	<b>219</b>	<b>Total trust funds</b>	<b>223</b>	<b>223</b>

## 12. RESERVES

(i) Asset revaluation reserve

Consolidated 1998 \$'000	University 1998 \$'000		Consolidated 1999 \$'000	University 1999 \$'000
43,673	43,673	Balance at the beginning of the financial year	43,974	43,974
-	-	Less Transfer to Accumulated funds	-	-
<b>43,673</b>	<b>43,673</b>		<b>43,974</b>	<b>43,974</b>
301	301	Add Transfer from fixed assets	48,377	48,377
<b>43,974</b>	<b>43,974</b>	<b>Balance at the end of the financial year</b>	<b>92,351</b>	<b>92,351</b>

The above transfer from fixed assets is the result of revaluations of University building and infrastructure.

## 13. ACCUMULATED FUNDS

The accumulated funds balance for the University at the beginning of the financial year has been adjusted as follows:

Consolidated 1998 \$'000	University 1998 \$'000		Consolidated 1999 \$'000	University 1999 \$'000
188,252	184,421	Balance prior to surplus appropriation and transfers	191,031	185,047
1,014	626	Previous years surplus/(deficit) from operations	(758)	(712)
<b>189,266</b>	<b>185,047</b>	<b>Opening accumulated funds</b>	<b>190,273</b>	<b>184,335</b>
-	-	Prior year adjustments to opening balance	7,481	7,481
1,765	-	Transfers to reserves	-	-
<b>191,031</b>	<b>185,047</b>	<b>Amended balance at the beginning of the current financial year</b>	<b>197,754</b>	<b>191,816</b>

#### 14. COMMITMENTS

i) The following capital projects either been contracted for or funds have been allocated on the basis that these funds would be made available under Commonwealth and State legislative provisions and by the University.

	Consolidated 1999 \$'000	University 1999 \$'000
Animal House	1,506	1,506
Northfields Avenue Development	300	300
Refurbishment of Buildings	15,133	15,133
Science Centre	200	200
South Coast Development	1,250	1,250
Storm Water Improvements	900	900
URAC Constructions	15	-
Unicentre Food Hall	478	-
ITC	70	-
Other	303	303
<b>Total</b>	<b>20,155</b>	<b>19,592</b>
Payable:		
- not longer than one year	18,555	17,992
- longer than one year but less than two years	1,400	1,400
- longer than two years but less than five years	200	200
- longer than five years	-	-
	<b>20,155</b>	<b>19,592</b>

(ii) In December 1991, the Commonwealth government approved the establishment of a Co-operative Research Centre (CRC) for Materials Welding and Joining of which the University is a member.

The CRC was incorporated under Corporations Law in 1993. The second round of the agreement was reached on 15 September 1999. The University has a commitment to contribute \$0.325m in cash and \$4.625m in kind to cover salaries, equipment, use of facilities and other expenditures over the next six and a half years.

	University Cash \$'000	University In Kind \$'000
2000	50	700
2001	50	704
2002	50	709
2003	50	714
2004	50	719
2005	50	719
2006	25	360
<b>Total</b>	<b>325</b>	<b>4,625</b>

(iii) In December 1992 the Commonwealth government approved the establishment of a Co-operative Research Centre (CRC) for Intelligent Manufacturing Systems and Technologies of which the University is a member. The CRC was incorporated under Corporations Law on 22nd February 1993. The second round of this agreement was reached on 1 July 1999. The University has a commitment to contribute \$0.130m in cash and \$4.914m in kind to cover salaries, equipment, use of facilities and other expenditures over the next six and half years.

	University Cash \$'000	University In Kind \$'000
2000	20	756
2001	20	756
2002	20	756
2003	20	756
2004	20	756
2005	20	756
2006	10	378
<b>Total</b>	<b>130</b>	<b>4,914</b>

(iv) Operating Lease Commitments

This represents non-cancellable operating leases contracted for but not capitalised in the accounts:

Consolidated 1998 \$'000	University 1998 \$'000		Consolidated 1999 \$'000	University 1999 \$'000
-	-	Payable:		
1,270	709	- not longer than one year	1,390	1,261
1,059	621	- longer than one year but less than two years	776	736
574	528	- longer than two years but less than five years	776	749
-	-	- longer than five years	-	-
<b>2,903</b>	<b>1,858</b>		<b>2,942</b>	<b>2,746</b>

## 15. CONTINGENT LIABILITIES

(i) In 1987, 1990, 1992 and 1993 the University furnished letters of comfort to the National Australia Bank Limited in support of loans given to the Wollongong UniCentre Limited and, University of Wollongong Recreation & Aquatic Centre. These arrangements do not involve the University in any undertaking to pay any shortfall in repayments.

(ii) As at the end of the financial year, the University and subsidiaries have credit facilities of \$2.050m in respect of Mastercard, Visa business cards and Visa purchase cards. Of this amount \$0.777m has been allocated in respect of Mastercards, Visa cards and Visa purchase cards issued to University departments. \$1.273m remains unused.

(iii) Currency Hedges have been taken out by ITC to the values of \$1.171m.

(iv) Unused letter of credit for the value of \$0.250m

No contingent liabilities, whether registered or unregistered, are secured by a charge on the assets of the University.

## 16. AMOUNT OWING BY COMMONWEALTH/STATE GOVERNMENTS

Under the State Grants (General Revenue) Amendment Act 1987, the Commonwealth and State Governments have agreed to meet the emerging liability arising from the operation of the State Superannuation Schemes.

In 1999, a decrease in the liability for the State Superannuation Schemes of \$11.967m was recorded in the income and expenditure statement as a reduction in expenditure and income.

Consolidated 1998 \$'000	University 1998 \$'000		Consolidated 1999 \$'000	University 1999 \$'000
46,802	46,802	Amount owing for unfunded liability at the beginning of the financial year	52,667	52,667
5,865	5,865	Increase/(decrease) in amount owing for unfunded liability	(11,967)	(11,967)
<b>52,667</b>	<b>52,667</b>	<b>Amount owing for unfunded liability at the end of the financial year</b>	<b>40,700</b>	<b>40,700</b>

Since 1987, the University has recognised these amounts owing from the Commonwealth and State Governments on the basis of a number of past events. These events include correspondence that provides for the Commonwealth Government, together with the State Government, to meet the unfunded liability for the University's State Superannuation Schemes on an emerging cost basis. The events also include the State Grants (General Revenue) Amendment Act 1987, Higher Education Funding Act 1988 and subsequent amending legislation which authorise annual expenditure, and estimates for this expenditure in the Commonwealth's three year forward program. However, there is no long-term agreement regarding this amount between the State Government, the Commonwealth Government and the University. At this time, the University has no evidence that the Commonwealth and State Governments will not continue to progressively meet this amount in accordance with current practice. However, there is still uncertainty concerning the amount because the three year life of the forward budget estimates is less than the time period which the State and Commonwealth Governments would require to meet their obligations. Until future funding agreements are put in place, any financial effect is unclear.

## 17. FINANCIAL INSTRUMENTS

(i) Interest rate risk, is the risk that the value of financial instruments will fluctuate due to changes in market interest rates.

The University's exposure to interest rate risks and the effective interest rates of financial assets and liabilities, both recognised and unrecognised at the balance sheet date are as follows:

Financial Instruments	Fixed Interest rate maturing in										Total carrying amount as per balance sheet		Weighted average effective interest rate	
	Floating Interest Rate		1 Year or less		Over 1 Year to 5 years		More than 5 years		Non-interest bearing		1999	1998	1999	1998
	1999	1998	1999	1998	1999	1998	1999	1998	1999	1998				
	\$000	\$000	\$000	\$000	\$000	\$000	\$000	\$000	\$000	\$000	\$000	\$000	\$000	\$000
<b>Financial Assets</b>														
Cash	3,269	2,078	-	-	-	-	-	-	-	-	3,269	2,078	3.53	4.42
Receivables	-	-	-	-	-	-	-	-	46,638	58,762	46,638	58,762	n/a	n/a
Receivables - Related Entities	-	-	-	-	-	-	-	-	-	-	-	-	n/a	n/a
Loans to staff	30	35	-	-	-	-	-	-	-	-	30	35	6.70	6.70
Loans to Discentre/Kids Uni	-	-	-	-	-	-	-	-	-	-	-	-	n/a	n/a
Unlisted shares	-	-	-	-	-	-	-	-	31	31	31	31	n/a	n/a
Government bonds	9,473	7,555	25,218	24,694	-	-	-	-	-	-	34,691	32,249	5.06	6.88
<b>Total Financial Assets</b>	<b>12,772</b>	<b>9,668</b>	<b>25,218</b>	<b>24,694</b>	<b>-</b>	<b>-</b>	<b>-</b>	<b>-</b>	<b>46,669</b>	<b>58,793</b>	<b>84,659</b>	<b>93,155</b>		
<b>Financial Liabilities</b>														
Borrowings	-	-	7,707	7,937	1,800	2,360	-	-	314	332	9,821	10,629	5.92	8.74
Creditors	-	-	-	-	-	-	-	-	9,252	10,092	9,252	10,092	n/a	n/a
Finance Leases	-	-	-	-	-	-	-	-	-	-	-	-	-	-
Interest rate swaps	-	-	-	-	-	-	-	-	-	-	-	-	-	-
Forward exchange contracts	-	-	-	-	-	-	-	-	1,171	1,930	1,171	1,930	n/a	n/a
<b>Total Financial Liabilities</b>	<b>-</b>	<b>-</b>	<b>7,707</b>	<b>7,937</b>	<b>1,800</b>	<b>2,360</b>	<b>-</b>	<b>-</b>	<b>10,737</b>	<b>12,354</b>	<b>20,244</b>	<b>22,651</b>		

\* Weighted average effective interest rate computes on an annual basis.

(ii) Credit risk is the risk of financial loss arising from another party to a contract/or financial position failing to discharge a financial obligation thereunder. The University's maximum exposure to credit risk is represented by the carrying amounts of the financial assets included in the consolidated balance sheet.

Financial Assets	Governments		Banks		Other		Totals	
	1999	1998	1999	1998	1999	1998	1999	1998
Cash	-	-	3,269	2,078	-	-	3,269	2,078
Receivables	40,700	52,666	-	-	5,938	6,096	46,638	58,762
Receivables - Related Entities	-	-	-	-	-	-	-	-
Loans to staff	-	-	-	-	30	35	30	35
Unlisted shares	-	-	-	-	31	31	31	31
Government bonds	34,691	32,249	-	-	-	-	34,691	32,249
<b>Total Financial Assets</b>	<b>75,391</b>	<b>84,915</b>	<b>3,269</b>	<b>2,078</b>	<b>5,999</b>	<b>6,162</b>	<b>84,659</b>	<b>93,155</b>

(iii) Derivative Financial Instruments, in 1999 Illawarra Technology Corporation Ltd had in the normal course of business utilised off-balance sheet instruments, ie, forward exchange contracts, in order to hedge exposure to fluctuations in foreign exchange rates. At balance date in 1999 the aggregate amount of contingent liability under forward exchange contracts was \$1.171m (1998 \$1.930m) of which \$1.018m (1998 \$1.408m) was due within twelve months and \$0.154m (1998 \$0.523m) was due in greater than one year but less than two years.

## 18. DONATIONS AND BEQUESTS

Consolidated 1998 \$'000	University 1998 \$'000		Consolidated 1999 \$'000	University 1999 \$'000
255	255	Donations - Cash	193	193
176	176	Donations - In Kind	660	660
<b>431</b>	<b>431</b>		<b>853</b>	<b>853</b>

## 19. INVESTMENT INCOME

Consolidated 1998 \$'000	University 1998 \$'000		Consolidated 1999 \$'000	University 1999 \$'000
1,790	1,790	Income earned:		
296	74	Government and semi-government securities	1,103	1,103
6	6	Term deposits and bank deposits	243	71
		Other	2	2
<b>2,092</b>	<b>1,870</b>		<b>1,348</b>	<b>1,176</b>
		Distributed as follows:		
703	703	Transfer to provisions	367	367
15	15	Transfer to trust funds	7	7
112	112	Special purpose accounts	62	62
1,040	1,040	General university funds	740	740
222	-	Other	172	-
<b>2,092</b>	<b>1,870</b>		<b>1,348</b>	<b>1,176</b>

## 20. ASSISTANCE TO ASSOCIATED ORGANISATIONS

The following assistance was made to organisations associated with the University:

University of Wollongong Foundation Ltd	<ul style="list-style-type: none"> <li>* Free use of office space</li> <li>* Payment of operating expenses</li> </ul>
Illawarra Technology Corporation Ltd	<ul style="list-style-type: none"> <li>* Development fund established in lieu of building rent to provide support for development projects for ITC &amp; the University.</li> </ul>
Wollongong UniCentre Limited	<ul style="list-style-type: none"> <li>* Part salary of General Manager paid by the University</li> <li>* Operating Grant to Kids Uni of \$0.180m</li> <li>* Free use of buildings</li> <li>* Contribution towards Conference Manager's salary &amp; car.</li> </ul>
University of Wollongong Recreation and Aquatic Centre Limited	<ul style="list-style-type: none"> <li>* Maintenance of Sportsground budget of \$0.059m</li> <li>* Free use of buildings and land used for sporting facilities.</li> </ul>

The assistance provided to these organisations is more than offset by the benefits accruing to the University, its students and staff through enhanced facilities, community relations, marketing, funding and/or repute.

All other identifiable costs and services relating to companies and organisations associated with the University are charged out to those entities under normal commercial terms and conditions.

There is no material expenditure or assets provided by other government bodies or statutory bodies at no cost to the University.

## 21. AUDIT FEES

Audit fees to The Audit Office of NSW for auditing services in 1999 totalled \$0.129m (1998 \$0.123m) for the University of Wollongong and controlled entities. The Audit Office received no other benefits. The audits of the Wollongong UniCentre Limited, Child Care Centre and Recreation & Aquatic Centre Limited were performed by KPMG as agent for The Audit Office.

**22. COMMONWEALTH GOVERNMENT GRANTS (excluding HECS)**

University 1998 \$'000		University 1999 \$'000
	Grants received pursuant to the Higher Education Funding Act 1988, excluding HECS:	
64,444	Operating purposes excluding HECS	62,444
	Special research assistance :	
748	Large research grants	1,902
529	Small research grants	493
519	SPIRT Scheme - Collaborative research grants	376
1,732	Research infrastructure grants	2,866
20	International Projects	-
18	Special Research Initiatives	-
553	Research fellowships	670
51	High Performance Computers	-
63	International Research Fellowships	116
1,287	Australian Postgraduate Awards	1,328
1,530	SPIRT Scheme - Australian Postgraduate Awards (Industry)	2,533
-	Key Centres	783
588	Overseas postgraduate research scholarships	624
<b>72,082</b>		<b>74,135</b>
	Other Commonwealth government grants	
3,190	Other research grants and contracts	2,848
704	Other Commonwealth Grants including Capital Pools Program	5,190
<b>75,976</b>	<b>Total Commonwealth Government Grants excluding HECS</b>	<b>82,173</b>

**(ii) Amounts received and expended pursuant to the Higher Education Act 1988 excluding HECS and amounts expended :**

	<b>Operating purposes excluding HECS</b>	
529	Surplus/(Deficit) from previous reporting period	572
4,994	Grants received in advance in the previous reporting period	4,978
64,428	Grants received in the reporting period (including grants received	62,164
(4,978)	Less grants received in advance for next reporting period	(5,010)
64,444	Funds available in the current reporting period	62,132
(64,402)	Expenses in the current reporting period	(62,303)
<b>572</b>	<b>Surplus/(Deficit) from the current reporting period</b>	<b>401</b>
	<b>Special Research Assistance</b>	
	<b>Large research grants</b>	
1,392	Surplus/(Deficit) from previous reporting period	453
-	Grants received in advance in the previous reporting period	96
844	Grants received in the reporting period	1,902
(96)	Less grants received in advance for next reporting period	(109)
<b>748</b>	<b>Funds available in the current reporting period</b>	<b>1,889</b>
(1,687)	Expenses in the current reporting period	(1,611)
<b>453</b>	<b>Surplus/(Deficit) from the current reporting period</b>	<b>731</b>
	<b>Small research grants</b>	
131	Surplus/(Deficit) from previous reporting period	130
-	Grants received in advance in the previous reporting period	-
529	Grants received in the reporting period	493
-	Less grants received in advance for next reporting period	-
<b>529</b>	<b>Funds available in the current reporting period</b>	<b>493</b>
(530)	Expenses in the current reporting period	(492)
<b>130</b>	<b>Surplus/(Deficit) from the current reporting period</b>	<b>131</b>

University 1998 \$'000		University 1999 \$'000
	<b>SPIRT Scheme - Collaborative research grants</b>	
294	Surplus/(Deficit) from previous reporting period	398
519	Grants received in advance in the previous reporting period	95
95	Grants received in the reporting period	376
(95)	<b>Less grants received in advance for next reporting period</b>	-
519	Funds available in the current reporting period	471
(415)	Expenses in the current reporting period	(532)
<b>398</b>	<b>Surplus/(Deficit) from the current reporting period</b>	<b>337</b>
	<b>Research infrastructure grants</b>	
588	Surplus/(Deficit) from previous reporting period	283
-	Grants received in advance in the previous reporting period	104
1,836	Grants received in the reporting period	2,866
(104)	<b>Less grants received in advance for next reporting period</b>	-
1,732	Funds available in the current reporting period	2,970
(2,037)	Expenses in the current reporting period	(2,409)
<b>283</b>	<b>Surplus/(Deficit) from the current reporting period</b>	<b>844</b>
	<b>International Projects</b>	
-	Surplus/(Deficit) from previous reporting period	-
-	Grants received in advance in the previous reporting period	-
20	Grants received in the reporting period	-
-	<b>Less grants received in advance for next reporting period</b>	-
20	Funds available in the current reporting period	-
(20)	Expenses in the current reporting period	-
<b>-</b>	<b>Surplus/(Deficit) from the current reporting period</b>	<b>-</b>
	<b>Special Research Initiatives</b>	
59	Surplus/(Deficit) from previous reporting period	12
-	Grants received in advance in the previous reporting period	-
18	Grants received in the reporting period	-
-	<b>Less grants received in advance for next reporting period</b>	-
18	Funds available in the current reporting period	-
(65)	Expenses in the current reporting period	-
<b>12</b>	<b>Surplus/(Deficit) from the current reporting period</b>	<b>12</b>
	<b>Research Fellowships</b>	
127	Surplus/(Deficit) from previous reporting period	108
44	Grants received in advance in the previous reporting period	31
540	Grants received in the reporting period	670
(31)	<b>Less grants received in advance for next reporting period</b>	(44)
553	Funds available in the current reporting period	657
(572)	Expenses in the current reporting period	(718)
<b>108</b>	<b>Surplus/(Deficit) from the current reporting period</b>	<b>47</b>
	<b>International Research Exchange</b>	
58	Surplus/(Deficit) from previous reporting period	11
-	Grants received in advance in the previous reporting period	-
63	Grants received in the reporting period	116
-	<b>Less grants received in advance for next reporting period</b>	(18)
63	Funds available in the current reporting period	98
(110)	Expenses in the current reporting period	(69)
<b>11</b>	<b>Surplus/(Deficit) from the current reporting period</b>	<b>40</b>
	<b>High Performance Computers</b>	
-	Surplus/(Deficit) from previous reporting period	-
4	Grants received in advance in the previous reporting period	-
47	Grants received in the reporting period	-
-	<b>Less grants received in advance for next reporting period</b>	-
51	Funds available in the current reporting period	-
(51)	Expenses in the current reporting period	-
<b>-</b>	<b>Surplus/(Deficit) from the current reporting period</b>	<b>-</b>

University 1998 \$'000		University 1999 \$'000
	<b>Australian Postgraduate Awards</b>	
242	Surplus/(Deficit) from previous reporting period	234
-	Grants received in advance in the previous reporting period	-
1,287	Grants received in the reporting period	1,328
-	Less grants received in advance for next reporting period	-
<b>1,287</b>	<b>Funds available in the current reporting period</b>	<b>1,328</b>
(1,295)	Expenses in the current reporting period	(1,310)
<b>234</b>	<b>Surplus/(Deficit) from the current reporting period</b>	<b>252</b>
	<b>SPIRT Scheme - Australian Postgraduate Awards (Industry)</b>	
151	Surplus/(Deficit) from previous reporting period	235
32	Grants received in advance in the previous reporting period	61
1,560	Grants received in the reporting period	2,533
(61)	Less grants received in advance for next reporting period	(161)
<b>1,531</b>	<b>Funds available in the current reporting period</b>	<b>2,433</b>
(1,447)	Expenses in the current reporting period	(938)
<b>235</b>	<b>Surplus/(Deficit) from the current reporting period</b>	<b>1,730</b>
	<b>Key Centres</b>	
-	Surplus/(Deficit) from previous reporting period	-
-	Grants received in advance in the previous reporting period	-
-	Grants received in the reporting period	783
-	Less grants received in advance for next reporting period	(57)
-	<b>Funds available in the current reporting period</b>	<b>726</b>
-	Expenses in the current reporting period	(670)
-	<b>Surplus/(Deficit) from the current reporting period</b>	<b>56</b>
	<b>Overseas postgraduate research scholarships</b>	
-	Surplus/(Deficit) from previous reporting period	-
-	Grants received in advance in the previous reporting period	-
588	Grants received in the reporting period	624
-	Less grants received in advance for next reporting period	-
<b>588</b>	<b>Funds available in the current reporting period</b>	<b>624</b>
(588)	Expenses in the current reporting period	(624)
-	<b>Surplus/(Deficit) from the current reporting period</b>	<b>-</b>

### 23. HIGHER EDUCATION CONTRIBUTION SCHEME

(a) Amounts received pursuant to the Higher Education Funding Act 1988 from HECS Trust Fund and amounts expended:

University 1998 \$'000		University 1999 \$'000
-	Surplus/(Deficit) from previous reporting period	-
1,773	Grants received in advance in the previous reporting period	2,117
22,547	Grants received in the reporting period (including grants received in advance for the next reporting period)	26,436
(2,117)	Less grants received in advance for next reporting period	(2,095)
22,203	Funds available in the current reporting period	26,458
(22,205)	Expenses in the current reporting period	(26,458)
-	<b>Surplus/(Deficit) from the current reporting period</b>	<b>-</b>
(b) 5,376	HECS contributions actually received from students	5,764
(500)	Future adjustment from trust fund	(362)
4,876		5,402
<b>27,079</b>	<b>Total HECS revenue for the reporting period</b>	<b>31,838</b>

## 24. NSW GOVERNMENT GRANTS

State government grants for the following purposes were received by the University during the reporting period:

Consolidated 1998 \$'000	University 1998 \$'000		Consolidated 1999 \$'000	University 1999 \$'000
782	782	Research grants	965	965
2,058	2,058	Other	646	646
<b>2,840</b>	<b>2,840</b>		<b>1,611</b>	<b>1,611</b>

## 25. FEES AND CHARGES

Fees and charges were collected from the following sources during the reporting period:

Consolidated 1998 \$'000	University 1998 \$'000		Consolidated 1999 \$'000	University 1999 \$'000
1,459	1,459	Continuing education	1,770	1,770
27,635	19,109	Full fee paying overseas students	31,444	21,312
292	292	Fees-approved post graduate award students	42	42
7,417	7,417	Student accommodation	7,798	7,798
3,287	-	Student body fees	3,269	-
880	880	Conference fees	1,111	1,111
222	1,018	Consulting fees - other	962	983
1,776	1,776	Consulting fees - research	545	1,570
198	198	Library fines	211	211
616	616	Parking	715	715
4,295	-	International project consultancy	6,619	-
893	792	Rental	888	735
2,615	2,750	Miscellaneous	4,178	2,965
<b>51,585</b>	<b>36,307</b>		<b>59,552</b>	<b>39,212</b>

## 26. OTHER OPERATING REVENUE

Consolidated 1998 \$'000	University 1998 \$'000		Consolidated 1999 \$'000	University 1999 \$'000
243	243	Other operating income is made up of:		
9,102	-	Campus Personal Computing	219	254
3,379	1,036	Trading Income	9,196	-
		Miscellaneous	1,790	513
<b>12,724</b>	<b>1,279</b>		<b>11,205</b>	<b>867</b>

## 27. EXPENSES ATTRIBUTED TO FUNCTIONS

Consolidated 1998 \$'000	University 1998 \$'000		Consolidated 1999 \$'000	University 1999 \$'000
<b>(i) Academic activities</b>				
41,386	41,386	Academic staff salaries	39,706	39,706
9,734	9,734	Academic staff salary related costs	12,309	12,309
17,782	17,782	Non-academic staff salaries	18,382	18,382
2,970	2,970	Non-academic staff salary related costs	3,769	3,769
		Depreciation expense		
3,809	3,809	Buildings	3,838	3,838
483	483	Computer equipment	751	751
68	68	Motor vehicles	42	42
1,623	1,623	Other equipment	1,734	1,734
133	133	Accommodation	106	106
212	212	Advertising	227	227
219	219	Agency staff	287	287
223	223	Book purchases	161	206
276	276	Catering	164	233
890	890	Computer maintenance & software	780	780
1,446	1,446	Consultants fees	1,488	1,488
265	265	Consumables	342	342
131	131	Contributions to external bodies	134	134
317	317	Equipment	73	73
214	214	Internet charges	407	407
1,477	1,477	Materials	1,348	1,348
182	182	Motor vehicles expenses	292	292
1,006	1,006	Printing	946	946
196	196	Repairs & maintenance	337	337
207	207	Staff appointment	276	276
419	419	Stationery	460	460
149	149	Subscriptions	165	165
694	694	Telephone	722	722
2,906	2,906	Travel	3,019	3,031
1,459	1,459	Other expenses	2,250	2,249
<b>90,876</b>	<b>90,876</b>	<b>TOTAL</b>	<b>94,515</b>	<b>94,640</b>
<b>(ii) Libraries</b>				
2,658	2,658	Non-academic staff salaries	2,782	2,782
585	585	Non-academic staff salary related costs	748	748
		Depreciation expense		
403	403	Buildings	403	403
40	40	Computer equipment	74	74
1	1	Motor vehicle	-	-
30	30	Other equipment	31	31
5,398	5,398	Library holdings	846	846
62	62	Binding	81	81
27	27	Copyright	44	44
348	348	Computer maintenance & software	129	129
50	50	Subscriptions	583	583
594	594	Other expenses	603	635
<b>10,196</b>	<b>10,196</b>		<b>6,324</b>	<b>6,356</b>
<b>(iii) Other academic support services</b>				
410	410	Academic staff salaries	528	528
89	89	Academic staff salary related costs	138	138
1,924	1,924	Non-academic staff salaries	2,026	2,026
476	476	Non-academic staff salary related costs	567	567
		Depreciation expense		
205	205	Buildings	246	246
243	243	Computer equipment	288	288
7	7	Motor vehicles	2	2
370	370	Other equipment	337	337
59	59	Computer rental	357	357
365	365	Computer maintenance and software	511	511
192	192	Equipment	14	14
203	203	Other expenses	663	667
<b>4,543</b>	<b>4,543</b>		<b>5,677</b>	<b>5,681</b>

Consolidated 1998 \$'000	University 1998 \$'000		Consolidated 1999 \$'000	University 1999 \$'000
<b>(iv) Student services</b>				
417	417	Academic staff salaries	420	420
128	128	Academic staff salary related costs	128	128
829	829	Non-academic staff salaries	745	745
184	184	Non-academic staff salary related costs	229	229
		Depreciation expense		
651	651	Buildings	657	657
-	-	Computer	10	10
4	4	Motor vehicles	3	3
3	3	Other equipment	3	3
21	21	Printing	31	31
26	26	Telephone	24	24
39	39	Travel	16	19
82	82	Other expenses	30	30
<b>2,384</b>	<b>2,384</b>		<b>2,296</b>	<b>2,299</b>
		<b>Student residences</b>		
1,699	1,699	Non-academic staff salaries	1,777	1,777
349	349	Non-academic staff salary related costs	463	463
		Depreciation expense		
1,066	1,066	Buildings	1,103	1,103
3	3	Computer equipment	18	18
20	20	Motor vehicles	17	17
56	56	Other equipment	59	59
2,005	2,005	Catering	2,186	2,190
212	212	Electricity	182	182
149	149	Equipment	167	167
274	274	Interest	204	204
154	154	Materials	139	139
89	89	Motor vehicle expenses	103	103
1,402	1,402	Repairs & maintenance	836	836
203	203	Telephone	225	225
118	118	Water consumption	146	146
680	680	Other expenses	690	691
8,479	8,479	Sub total	8,315	8,320
<b>10,863</b>	<b>10,863</b>	<b>Total student services</b>	<b>10,611</b>	<b>10,619</b>
<b>(v) Public services</b>				
47	47	Academic staff salaries	-	-
12	12	Academic staff salary related costs	-	-
17	17	Non-academic staff salaries	-	-
10	10	Non-academic staff salary related costs	-	-
		Depreciation expense		
50	50	Buildings	57	57
1	1	Other equipment	1	1
148	148	Other expenses	127	127
<b>285</b>	<b>285</b>		<b>185</b>	<b>185</b>
<b>(vi) Buildings and grounds</b>				
4,469	4,469	Non-academic staff salaries	4,207	4,207
964	964	Non-academic staff salary related costs	1,156	1,156
		Depreciation expense		
234	234	Buildings	265	265
-	-	Computer equipment	5	5
39	39	Motor vehicles	19	19
40	40	Other equipment	45	45
1,009	1,009	Electricity	1,240	1,250
518	518	Materials	339	339
3,405	3,405	Minor works	-	-
902	902	Repairs & maintenance	1,307	1,307
141	141	Subcontractors	288	288
394	394	Water consumption	431	431
146	146	Other expenses	1,082	1,147
<b>12,261</b>	<b>12,261</b>		<b>10,384</b>	<b>10,459</b>

Consolidated 1998 \$'000	University 1998 \$'000		Consolidated 1999 \$'000	University 1999 \$'000
--------------------------------	------------------------------	--	--------------------------------	------------------------------

(vii) Administration and other general institutional services

7,929	7,929	Non-academic staff salaries	7,910	7,910
2,060	2,060	Non-academic staff salary related costs	2,345	2,345
		Depreciation expense		
169	169	Buildings	188	188
128	128	Computer equipment	89	89
48	48	Motor vehicles	11	11
167	167	Other equipment	176	176
877	877	Infrastructure	887	887
27	27	Accommodation	21	21
15	15	Advertising	118	118
36	36	Agency staff	313	313
4	4	Bad debts	263	263
183	183	Bank fees & charges	225	225
115	115	Catering	20	118
96	96	Commission	58	58
222	222	Computer maintenance and software	320	320
-	-	Computer rental	225	225
367	367	Consultants	455	455
265	265	Consumables	291	291
593	593	Contributions	379	379
185	185	Copyright	160	160
247	247	Insurance	306	306
326	326	Interest	287	287
39	39	Internet charges	61	61
307	307	Materials	244	244
148	148	Motor vehicle expenses	202	202
147	147	Postage	111	111
357	357	Printing	373	373
760	760	Rent-equipment & buildings	491	690
158	158	Repairs & maintenance	165	165
94	94	Subscriptions	142	142
136	136	Telephone	154	154
765	765	Travel	850	850
116	116	Other expenses	357	365
<b>17,086</b>	<b>17,086</b>		<b>18,197</b>	<b>18,502</b>

(viii) Other services

12,293	842	Non-academic staff salaries	14,312	959
2,773	43	Non-academic staff salary related costs	3,010	45
		Depreciation expense		
930	473	Buildings	807	472
51	-	Computer equipment	433	-
254	3	Motor vehicles	69	1
109	-	Other equipment	331	-
1,487	-	Agents' fees	2,197	-
1,415	-	Catering operations	1,362	-
-	6,062	Contributions	163	6,112
501	-	Consultants fees	613	-
478	-	Direct project consultancy	2,265	-
1,062	-	Direct project costs	2,038	-
440	-	Function centre	451	-
1,052	-	Laboratory and office costs	752	-
2,390	-	Marketing	1,954	-
204	-	Post office trading	249	-
1,178	-	Site costs	681	-
3,798	-	Unishop trading	3,745	-
4,343	258	Other expenses	3,192	736
<b>34,758</b>	<b>7,681</b>		<b>38,624</b>	<b>8,325</b>

Consolidated 1998 \$'000	University 1998 \$'000		Consolidated 1999 \$'000	University 1999 \$'000
(ix) Total				
42,259	42,259	Academic staff salaries	40,654	40,654
9,962	9,962	Academic staff salary related costs	12,575	12,575
49,600	38,149	Non-academic staff salaries	52,140	38,788
10,370	7,640	Non-academic staff salary related costs	12,287	9,322
-	-	Depreciation expense	-	-
7,517	7,060	Buildings	7,564	7,229
948	897	Computer equipment	1,667	1,234
442	191	Motor vehicles	163	95
2,398	2,289	Other equipment	2,717	2,385
5,398	5,398	Library holdings	846	846
877	877	Infrastructure	887	887
17,580	16,712	Sub-total depreciation expense	13,844	12,676
160	160	Accommodation	127	127
226	226	Advertising	345	345
1,487	-	Agents fees	2,197	-
255	255	Agency staff	599	599
4	4	Bad debts	263	263
183	183	Bank fees & charges	225	225
62	62	Binding	81	81
223	223	Book purchases	162	206
3,812	2,397	Catering	3,733	2,542
96	96	Commission	58	58
1,460	1,460	Computer maintenance and software	1,228	1,228
59	59	Computer rental	582	582
2,313	1,813	Consultant fees	2,556	1,943
530	530	Consumables	634	634
1,088	7,150	Contributions	1,187	7,136
212	212	Copyright	204	204
478	-	Direct project consultancy	2,265	-
1,062	-	Direct project costs	2,038	-
1,221	1,221	Electricity	1,422	1,432
658	658	Equipment	254	254
440	-	Function centre	451	-
247	247	Insurance	306	306
600	600	Interest	491	491
253	253	Internet charges	468	468
1,052	-	Laboratory and office costs	752	-
2,390	-	Marketing	1,954	-
2,457	2,457	Materials	2,069	2,069
3,405	3,405	Minor works	-	-
419	419	Motor vehicle expenses	597	597
147	147	Postage	111	111
204	-	Post office trading	249	-
1,385	1,385	Printing	1,351	1,351
760	760	Rent-equipment & buildings	491	690
2,658	2,658	Repairs & maintenance	2,646	2,646
1,178	-	Site costs	681	-
207	207	Staff appointment	276	276
419	419	Stationery	460	460
141	141	Subcontractors	288	288
293	293	Subscriptions	890	890
1,058	1,058	Telephone	1,125	1,125
3,709	3,709	Travel	3,885	3,901
3,798	-	Unishop trading	3,745	-
512	512	Water consumption	577	577
7,776	3,690	Other expenses	8,994	6,647
<b>180,868</b>	<b>153,791</b>	<b>Total Expenses by function</b>	<b>184,517</b>	<b>154,767</b>

## 28. SALARY RELATED CHARGES

The following salary related expenses were incurred during the reporting period:

Consolidated 1998 \$'000	University 1998 \$'000		Consolidated 1999 \$'000	University 1999 \$'000
		Contributions to superannuation and pension schemes		
2,296	2,296	Emerging cost	2,457	2,457
6,485	5,507	Funded	10,094	9,093
297	297	Provisions for future emerging costs	183	183
6,307	5,857	Payroll tax	6,241	5,678
1,556	1,362	Workers' compensation	1,966	1,668
2,715	2,233	Long-service leave expense	3,043	2,738
555	50	Annual leave	775	80
121	-	Other - meals and uniforms	103	-
<b>20,332</b>	<b>17,602</b>	<b>Total salary-related expenses</b>	<b>24,862</b>	<b>21,897</b>

## 29. INTEREST PAID

Consolidated 1998 \$'000	University 1998 \$'000		Consolidated 1999 \$'000	University 1999 \$'000
<b>875</b>	<b>600</b>	<b>Interest paid during the reporting period</b>	<b>658</b>	<b>491</b>

## 30. ABNORMAL ITEMS

Consolidated 1998	University 1998		Consolidated 1999	University 1999
-	-	Miscellaneous	(107)	-
<b>-</b>	<b>-</b>	<b>Total abnormal items</b>	<b>(107)</b>	<b>-</b>

31. Research and Development Contract: The University of Wollongong entered into a R&D syndicate whereby it is contracted for a period to carry out R&D on a specific project. In consideration of the market value, an initial payment for the intellectual property owned by the University of Wollongong was received as a licensing fee on the 31 December 1997. Further payments in consideration for the intellectual property were received in 1998 totalling \$24.300m over two accounting periods. Funds have been transferred to member of the syndicate to fund part "B" technology development.

In 1999 an amount for \$1.337m was deposit in the security deposit account for interest received on investments.

The estimated life for the project is scheduled to the year 2006. Also, the University will subscribe in a related company using accumulated funds from investments.

32. In accordance with Section 41B(1)(d) of the Public Finance and Audit Act 1983 and the Public Finance and Audit (General) Regulation, 1996 a summary of land owned or occupied by the University together with the values thereof accompanies these Financial Statements. This summary has not been audited.

**END OF AUDITED FINANCIAL STATEMENTS**

# Index

<b>A</b>		Summary of Significant		Legislation	9
Aboriginal Education Centre	18	Accounting Policies	57	Management Improvement Plans	
Academic Promotions	32	Controlled Entities	60	and Achievements	8
Accommodation	30	Current Assets	61	Organisational Highlights	7
<b>B</b>		Non-Current Assets	62	Measures & Indicators of Performance	8
Buildings and Site Development	33	Loans to Staff and Students	64	Principal Officers	12
<b>C</b>		Investments	65	Problem Areas and Solutions	7
Campus Property	34	Current Liabilities	65	Review of Operations	7
Capital Works and Planning	33	Non-Current Liabilities	66	Mission Statement	1
Centre for Educational Development		Secured Loans and Advances	67	<b>N,O</b>	
& Interactive Resources (CEDIR)	18	Provisions for Deferred Employee		Objectives	2
Charter	1	Entitlements	68	Occupational Health & Safety	31
Client Services	9	Trust Funds - Widow Managed Funds	71	Overseas Conference Leave	32
Code of Conduct	9	Reserves	71	<b>P</b>	
Community Service	25	Accumulated Funds	71	Performance Highlights	8
Controlled Entities	36	Commitments	72	Personnel Policies and Practises	31
Council		Contingent Liabilities	73	Principal Officers	12
Members	13	Amount Owing by Commonwealth/		Property	33
Attendances	13	State Governments	73	<b>Q,R</b>	
Counselling Service	18	Financial Instruments	74	Recreation and Aquatic Centre	36
<b>D</b>		Donations and Bequests	75	Research	19
Dean of Students	18	Investment Income	75	Research Committee - Membership	14
<b>E</b>		Assistance to Associated		<b>S</b>	
Education Committee - Membership	14	Organisations	75	Science Centre	26
Equal Employment Opportunity	11	Audit Fees	75	Student Statistics	28
Ethnic Affairs Appendix	37	Commonwealth Government		Student Profile	28
Ethnic Affairs Report	12	Grants (excluding HECS)	76	Student Resources	29
<b>F</b>		Higher Education Contribution		Students' Representative Council	30
1999 University and Subsidiaries		Scheme	78	Student Services	18
Financial Results	41	NSW Government Grants	79	Study Leave	32
Financial Statements	41	Fees and Charges	79	<b>U</b>	
Changes in Accounting Policy	41	Other Operating Revenue	79	UniCentre	36
Overview of Operating Result	41	Expenses Attributed to Functions	80	University Overview	1
Statement of Income and Expenditure	41	Salary Related Charges	84	University Structure	6
Consolidated Revenue 1995-1999	41	Interest Paid	84	<b>V</b>	
Comparison of Consolidated Income	42	Abnormal Items	84	Vice-Chancellor's Report	3
Deferred Income - Government		Foundation	36	<b>W,X,Y,Z</b>	
Contributions for superannuation	42	Freedom of Information	10	Number of Copies and approximate cost	
Expenditure	42	Full-time and Fractional Full-time Staff	32	1000 at \$10.45 each	
Balance sheet	42	<b>G,H</b>		<b>Editorial &amp; Production</b>	
Current Ratio 1995-1999	43	Human Resources	31	Academic Registrar's Division	
1999 Results for University of		<b>I</b>		University of Wollongong	
Wollongong	43	Illawarra Technology Corporation	36	<b>Graphic Design &amp; Art Direction</b>	
Income Statement from Internal		Industrial Relations	31	Jayne Cusack - Paul Martens	
Management Accounts	43	Information Resources	27	April 2000	
1999 Actual vs 1999 Budget		Information Technology Services	27		
Balance Sheet	45	Internationalisation	22		
Investment Management Performance	46	Internationalisation Committee			
Donors and Benefactors	47	- Membership	14		
Grants to Non-Government Community		<b>I,K,L</b>			
Organisations for 1999	48	Key Statistics	2		
Matters Raised by the Auditor General in		Legislation	9		
Management Letters	49	Learning and Teaching	15		
1999 Financial Statements		Leased Properties	35		
Statement of Financial Position as at		Library	27		
31 December 1999	53	<b>M</b>			
Statement of Cash Flows	55	Management	7		
Notes to Statement of Cash Flows	56	Client Service	9		
Notes to Forming Part of the Financial		Code of Conduct	9		
Statements	57	EEO	11		
		Freedom of Information	10		

