

# NSW Budget 2022-23

Western Sydney



Supporting families,  
building a brighter *future*



# Acknowledgement of Country

We acknowledge that Aboriginal and Torres Strait Islander peoples are the First Peoples and Traditional Custodians of Australia, and the oldest continuing culture in human history.

We pay respect to Elders past and present and commit to respecting the lands we walk on, and the communities we walk with.

We celebrate the deep and enduring connection of Aboriginal and Torres Strait Islander peoples to Country and acknowledge their continuing custodianship of the land, seas and sky.

We acknowledge the ongoing stewardship of Aboriginal and Torres Strait Islander peoples, and the important contribution they make to our communities and economies.

We reflect on the continuing impact of government policies and practices, and recognise our responsibility to work together with and for Aboriginal and Torres Strait Islander peoples, families and communities, towards improved economic, social and cultural outcomes.

Artwork:  
*Regeneration* by Josie Rose



# Contents

Treasurer's message	5
Our vision for Western Sydney	7
Building a brighter future	8
Supporting families and communities	15







# Treasurer's message



Western Sydney is one of New South Wales' great economic and cultural powerhouses. From its major centres to its 191,000 businesses, Western Sydney is a **key driver of our entire State's economic prosperity**.

The past year has seen Western Sydney families and communities hit by COVID-19, storms, floods and now, cost of living pressures. Faced with these challenges, the people of Western Sydney have shown **remarkable strength and resilience**. Economic activity and employment in the region have bounced back to exceed pre-COVID-19 levels, with employment levels now 3.3 per cent higher compared to pre-COVID-19.

Our priority is to make sure Western Sydney is a great place to live, work and raise a family.

Central to this is our **\$5 billion WestInvest program**, which will deliver transformational change to Western Sydney communities by creating more green space, building community infrastructure such as sports fields and pools, providing more arts and cultural facilities and improving high streets and traffic congestion.

\$478 million from WestInvest will **modernise nine Western Sydney schools** to give children and young people the best start to life. The \$2 billion Community Project Fund is also well underway and I look forward to announcing successful projects later this year.

This year's Budget also focuses on supporting families and **boosting household budgets** with our new broad-based Toll Rebate Scheme, Energy Bill Buster program and Back to School vouchers.

Importantly, we are investing up to **\$5 billion in high quality, affordable childcare** saving many families thousands of dollars a year. We know that many Western Sydney families live in a 'childcare desert'. This funding, with the proposed reforms to the Commonwealth Child Care Subsidy, is expected to boost the number of childcare places in New South Wales by up to 47,000.

The NSW Government is focusing on the future and investing in **vital long-term infrastructure like the Parramatta Light Rail**.

We have committed \$236 million to continue work on Stage 1 in 2022-23 and we recently announced our commitment to invest \$602.4 million to start works and planning for Stage 2. This, along with \$1.5 billion towards the Western Sydney Growth Roads Program will enable residents to get where they're going faster and put valuable time back in their day.

We want to establish Western Sydney's reputation as a world leader in industries of the future. The new **Advanced Manufacturing Research Facility** in the Bradfield aerotropolis precinct will deliver the largest and most advanced industrial ecosystem in the nation. Development of a world-leading commercial-scale viral vector manufacturing facility in Westmead is also underway. This will provide ground-breaking trial therapies for infections, cancer and genetic diseases – the first of its kind in Australia.

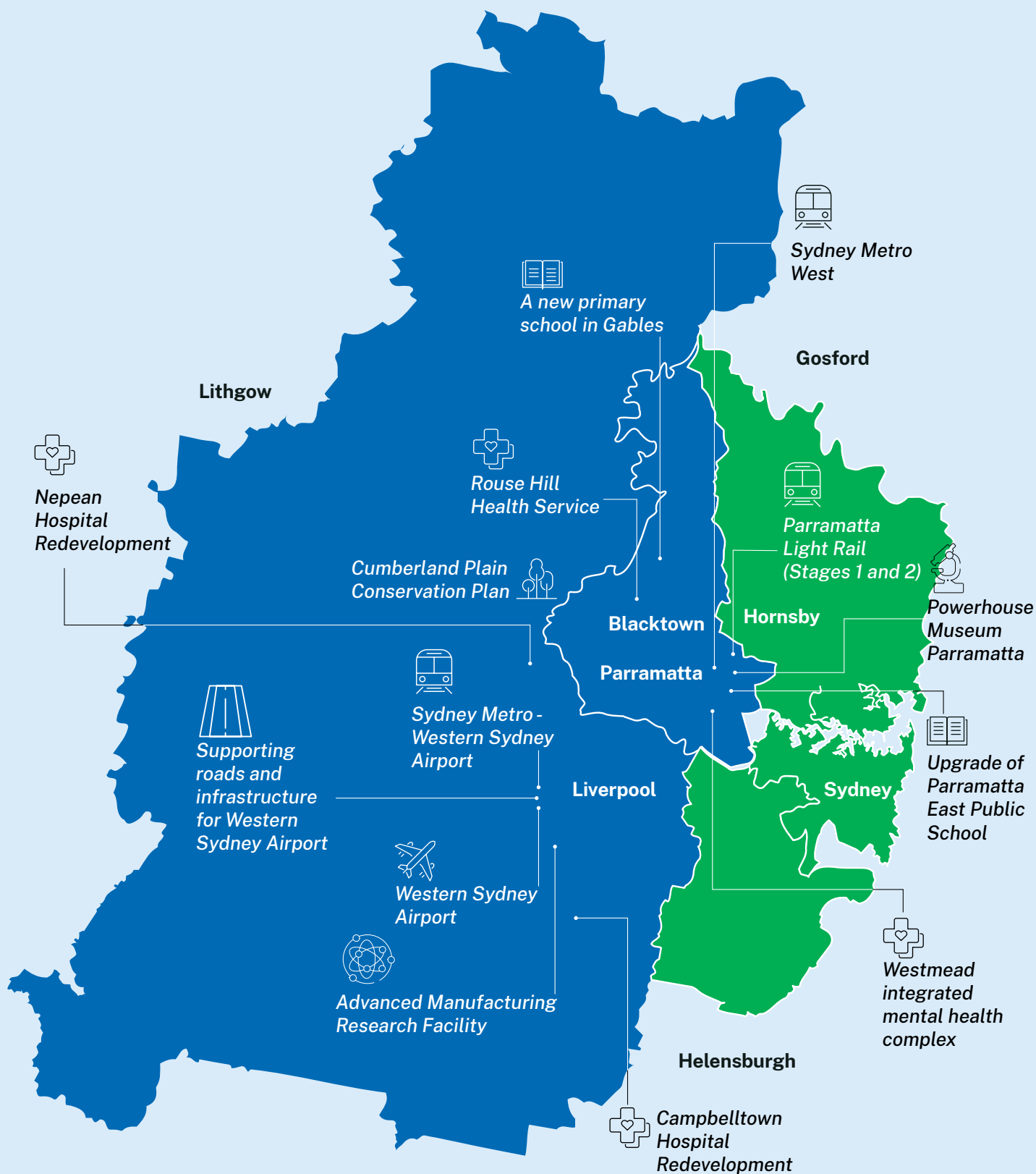
In this Budget, the NSW Government is committed to building a brighter future for Western Sydney while delivering for its people today.

A handwritten signature in black ink, appearing to read 'Matt Kean', with a stylized flourish at the end.

**The Hon. Matt Kean MP**

NSW Treasurer,  
Minister for Energy

This Budget invests \$16.0 billion on transport infrastructure, \$1.8 billion on hospital infrastructure and \$2.8 billion on school infrastructure for Western Sydney.



# Our vision for Western Sydney

Western Sydney is one of our State's fastest growing and most dynamic regions. In the 10 years to 2021 alone, Western Sydney's population grew by more than 20 per cent, double the rate of growth compared with the rest of New South Wales.

Currently, Western Sydney is home to a large and diverse population of about 2.2 million people — more than a quarter of the NSW population. In economic terms, Western Sydney is already the third-largest economy in Australia behind the Sydney and Melbourne CBDs. The region is home to more than 191,000 businesses and a thriving workforce of nearly 1.5 million employed people — more than a third of total employed people in New South Wales.

The NSW Government is investing to bring the vision for a liveable, workable and beautiful Greater Sydney to life, including in Western Sydney.

The \$5.0 billion WestInvest program will fund transformational infrastructure projects, improve liveability and build a brighter future for families and communities in Western Sydney. This builds on the landmark Western Sydney City Deal signed in 2018 between all three levels of government that is on track to deliver a once-in-a-generation economic and community transformation of Western Sydney.

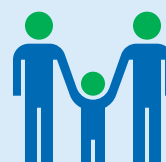
Significant investments are underway to build industries and precincts of the future economy in Western Sydney. The Western Sydney Airport and Bradfield City Centre will be a world-class precinct which will cater for a range of advanced industries and encourage further investment in the area. The Advanced Manufacturing Research Facility will make Western Sydney the Australian headquarters of advanced manufacturing. The Westmead Health and Innovation District will be one of the largest health, education, research and training precincts in Australia. These industries and precincts will bring quality jobs for people in the region.

Western Sydney is a core part of the Six Cities vision for New South Wales, housing two of the six cities. This vision will deliver a series of interconnected, dynamic and resilient places, each with its own clear and unique identity. This enhanced connectivity will support and attract new economic industries at a global scale, increase opportunities for housing choice and support overall quality of life.

With a growing population, significant infrastructure investments, thriving industries and greater connectivity to other key regions in New South Wales, Western Sydney is well-situated to drive the State's economic expansion.



Third  
largest  
economy in Australia



2.2 million  
people



43%  
of Western Sydney  
residents speak a  
language other  
than English



1.5 million  
workers



More than  
191,000  
businesses

# Building a brighter future

The NSW Government is focused on making Western Sydney a great place to live, work and raise a family.

## Connecting communities

Connecting people to their workplace and to one another, safely and quickly, is a key priority of this Government. The Government is acting on plans to realise the 30-minute city ambition by funding the planning of a sustainable transport network that considers the movement of people and freight to support liveable and productive communities. Safe and reliable transport connections that support a 24/7 economy in Western Sydney are being considered in the planning of the future transport network.

This Budget allocates more than **\$16.0 billion** in transport infrastructure in Western Sydney to support growth, including \$2.8 billion in 2022-23. The increase in infrastructure investment in Western Sydney will continue to unlock the economic potential of the region and provide the critical transport links for the Western Sydney International (Nancy-Bird Walton) Airport and surrounding employment areas.

Funding for upgrades to key roads, such as Mulgoa Road, will support economic growth and productivity by improving connections to Western Sydney employment lands and the Aerotropolis. Upgrades will also deliver local safety improvements and promote sustainable transport options by providing active transport facilities and possible future public transport needs.

Key investments and initiatives in this Budget include the following:

- **\$236.0 million** in 2022-23 on Parramatta Light Rail Stage 1 to support growth in Western Sydney, creating new communities and connecting places.
- **\$602.4 million** on Parramatta Light Rail Stage 2 (\$26.2 million in 2022-23) to commence the detailed planning and early works, which will include the delivery of a new bridge crossing the Parramatta River between Wentworth Point and Melrose Park.
- **\$220.1 million** in 2022-23 (\$1.5 billion over four years) on the Western Sydney Growth Roads Program to accommodate population and employment growth in Western Sydney. Key projects include:
  - Mulgoa Road upgrades (state and federally funded)
  - The Horsley Drive, M7 motorway to Cowpasture Road (state and federally funded)
  - Appin Road Improvements (Commonwealth Government-funded)
  - Spring Farm Parkway Stage 1
  - Mamre Road, M4 Motorway to Erskine Park Road
  - Memorial Avenue, Old Windsor Road to Windsor Road
  - Western Sydney Long-Term Strategic Transport Corridor Preservation
- **\$205.6 million** in 2022-23 (\$1.2 billion over four years) towards the M12 Motorway to support the Western Sydney International Airport. The M12 Motorway provides direct access to the airport, running east-west, linking the M7 Motorway and The Northern Road. It will also improve the movement of freight in and through Western Sydney.
- **\$74.0 million** in 2022-23 (\$243.1 million over three years) on Prospect Highway, Reservoir Road to St Martins Crescent to improve road safety for all road users, reduce congestion leading to improved travel times, and increase network efficiency.





## Parramatta Light Rail Stage 1

The Parramatta Light Rail is one of the NSW Government's latest major infrastructure projects being delivered to serve a growing Sydney. Stage 1 will connect Westmead to Carlingford via the Parramatta CBD and Camellia with a two-way track spanning 12 km. It is expected to open in 2023.

With completed track installation across the 12 km alignment and work on the first light rail stop underway; the Parramatta Light Rail route will link the Parramatta CBD and train station to the Westmead Health Precinct, Cumberland Hospital Precinct, CommBank Stadium, the Camellia Town Centre, Powerhouse Parramatta, Telopea, Rosehill Gardens Racecourse, and three Western Sydney University campuses.

## Parramatta Light Rail Stage 2

The NSW Government has committed \$602.4 million to proceed with Parramatta Light Rail Stage 2 and commenced the detailed planning process to move ahead with this Western Sydney project.

The funding will go towards early works and building the vital bridge connection across the Parramatta River between Wentworth Point and Melrose Park.

Planning and development work is continuing, including utilities and geotechnical investigations across the alignment, as well as progressing the development of the project's Environmental Impact Statement, which will be released for public comment by the end of the year.





## Providing world-class healthcare and hospitals

The Western Sydney region is home to the Westmead Health and Innovation District, Australia's largest health, education and research precinct. Good health is the backbone of a productive economy and quality of life. This Budget continues to invest in innovative and integrated facilities that will deliver high-quality healthcare for decades to come. This will support access to quality local health facilities and healthcare close to home for Western Sydney residents.

The Government is spending more than **\$1.8 billion** on hospitals, including more than \$480.0 million in 2022-23 for Western Sydney. Key capital investments and initiatives include the following:

- **\$185.4 million** in 2022-23 (as part of a \$619.0 million project) for Stage 2 of The Children's Hospital at Westmead Redevelopment.
- **\$126.8 million** in 2022-23 (as part of a \$740.0 million project) for the Liverpool Health and Academic Precinct.
- **\$76.0 million** in 2022-23 (as part of a \$1.0 billion project) for Stages 1 and 2 of the Nepean Hospital Redevelopment.
- **\$45.0 million** in 2022-23 (as part of a \$632.0 million project) for Stage 2 of the Campbelltown Hospital Redevelopment.
- **\$34.2 million** in 2022-23 (as part of a \$49.6 million project) for the Viral Vector Manufacturing Facility.
- **\$11.7 million** in 2022-23 (as part of a \$300.0 million project) for the Rouse Hill Health Service.
- **\$1.8 million** in 2022-23 (as part of a \$460.0 million project) to deliver a modern and integrated mental health complex at the Westmead Hospital campus.



## Vibrant, green and creative precincts

Vibrant and green streetscapes and spaces can help create a better place to live and work. They can improve physical and mental health, increase urban amenity, enhance local property values and provide places for our unique plants and animals to live. Sporting and cultural institutions and infrastructure play a critical role in the State's economy, from skills development and job creation to attracting tourism. Maximising our investment in Western Sydney will further the city's role as a world-class centre for sporting events and cultural visitation, and put Western Sydney on the map as a cultural capital.

Key investments and initiatives recognised in this Budget include:

- **\$246.1 million** in 2022-23 for the new Powerhouse Museum at Parramatta and expansion of the Museum Discovery Centre in Castle Hill.
- **\$26.4 million** in 2022-23 (as part of a \$53.8 million project over three years) for early works on heritage assets at Parramatta North, including site-wide enabling infrastructure, critical conservation, and activation of 11 heritage buildings and 3 open spaces.
- **\$15.0 million** in 2022-23 (as part of a \$38.4 million project) to continue the Cumberland Plain Conservation Plan to acquire the first stage of the Georges River Koala Reserve, and for installation of koala-exclusion fencing to protect koalas from urban encroachment.

- **\$11.1 million** in 2022-23 (as part of a \$81.4 million project) to continue capital works and maintenance of Stadium Australia at Sydney Olympic Park.
- **\$10.0 million** over two years to support local councils and community organisations to host cultural festivals and events focused in Western Sydney and the six cities.
- **\$9.5 million** in 2022-23 (\$78.3 million over 10 years) to improve pathways and park facilities at Western Sydney Parklands.
- **\$5.0 million** in 2022-23 to Venues NSW to develop a final business case for an operable roof at Stadium Australia.
- Funding towards the Rugby League Centre of Excellence at Kellyville Memorial Park to provide training and community sports facilities and support the development of male and female players. This is part of a **\$113.0 million** investment towards Rugby League Centres of Excellence in New South Wales.
- **Redevelopment of Penrith Stadium.** This will turn it into a world-class suburban sport, entertainment and community venue.

The NSW Government has also committed funding to support free general admission to Sydney Living Museums for the next 12 months, including its Western Sydney sites, to make arts and culture accessible to all.



## WestInvest

The new **\$5.0 billion** WestInvest program, announced in September 2021, will fund transformational projects that will support liveability and community amenity in Western Sydney.

The program is split between two funding streams. **\$2.0 billion** is reserved for high-priority community projects, of which:

- **\$1.6 billion** will be allocated through a competitive grants process to non-government organisations, Local Aboriginal Land Councils, charitable organisations, community groups, not-for-profits and local councils.
- **\$400.0 million** will be directly allocated to eligible Councils to advance local projects in Western Sydney LGAs.

In February 2022, through the 'Have Your Say' survey, Western Sydney residents were invited to contribute ideas for liveability-enhancing projects that would improve the everyday lives of local communities. More than 5,400 people submitted a survey, with 11,336 ideas generated.

The feedback received through the 'Have Your Say' survey will help inform the assessment of proposals through the WestInvest program, ensuring that selected projects meet the needs of the community and make a real difference to the lives of Western Sydney residents.

The community project stream is underway, with organisations that were successful in the Registration of Interest round now able to submit applications. Successful projects are expected to be determined from November 2022.

A further **\$3.0 billion** is available to NSW Government agencies to deliver transformational projects that will benefit local communities.

All funding through WestInvest will be allocated to projects that drive outcomes to improve one or more of these six focus areas:

- Quality green and open spaces
- Community infrastructure
- School modernisation
- Arts and cultural facilities
- High street activation
- Local traffic programs

This Budget announces **\$478.2 million** from WestInvest to modernise local schools. The program of works will deliver a broad range of capital investment to renew existing school assets and provide additional teaching spaces at nine schools:

- Austral Public School
- Condell Park High School
- Leppington Public School
- Parramatta East Public School
- Riverbank Public School (Stage 3)
- Rouse Hill High School
- Schofields Public School
- Sir Joseph Banks High School
- Telopea Public School

Further NSW Government agency projects will be announced later in 2022.





## Western Sydney City Deal

The Western Sydney City Deal (the City Deal), signed on 4 March 2018, is a landmark agreement between all three levels of government that will drive economic growth, enhanced connectivity, liveability and sustainability for the people of Western Sydney. This builds on the Commonwealth Government's \$5.3 billion commitment towards the new Western Sydney Airport.

As at August 2021, 11 out of the 38 commitments agreed under the City Deal have been completed.

The NSW Government is continuing to implement the City Deal and engaging in consistent and open collaboration across all three levels of government to strengthen Western Sydney's vibrant culture and lifestyle. This will make it an even better place to live.

Key investments under the City Deal include:

- **\$1.7 billion** in 2022-23 for continued construction for the Sydney Metro – Western Sydney Airport line, a metro rail link connecting St Marys to the new Western Sydney International (Nancy-Bird Walton) Airport and the Western Sydney Aerotropolis. The project is a key part of delivering an integrated transport system for the Western Parkland City. Strategic planning has identified future extensions and connections to service the Western Parkland City. A business case will be prepared for a south-eastern extension of the Sydney Metro Western Sydney Airport project from the current southern terminus at Bradfield to Glenfield.
- **\$113.9 million** in 2022-23 towards the continuation of Stage 1 Enabling Works to establish, remediate and allow site access to the new Bradfield City Centre.

- **\$39.0 million** in 2022-23 to continue the establishment of Bradfield's first high-tech building which will house shared-use equipment for research institutions and industry to collaborate.
- **\$26.6 million** in 2022-23 towards the continuation of the Western Parkland City Liveability Program, which provides vital community infrastructure and public spaces across eight City Deal council areas.
- **\$12.7 million** in 2022-23 towards the continuation of the New Education Training Model pilot aimed at helping advanced industries access skilled labour.
- **\$1.9 million** in 2022-23 towards the continuation of the Place-based Infrastructure Compact program in the new Greater Penrith to Eastern Creek growth area.
- The development of a **South-West Sydney Community and Justice Precinct** strategic business case, expected to be completed in 2022-23.

Western Sydney will continue to be the heart of Australia's high-tech manufacturing capability with the new Advanced Manufacturing Research Facility (AMRF) funded as part of the State's commitment to the City Deal. This Budget invests **\$10.0 million** in 2022-23 (\$261.9 million over 10 years) towards its establishment. The AMRF will support up to 200 direct and 1,000 indirect jobs in the Bradfield City Centre by 2032, supporting the NSW Government's commitment to deliver 200,000 jobs by 2056 in the Western Parkland City as part of the City Deal.

Render of AMRF









# Supporting families and communities

This Budget invests to support families, create opportunities and improve quality of life for people living in Western Sydney for decades to come.

The NSW Government is investing in a range of measures to support families, build communities, give children and young people the best start to life, and strengthen our frontline services.

## Boosting household budgets

This Budget invests in new and expanded measures to take the strain off NSW households. This includes energy bill relief and toll relief schemes, and making childcare, preschool and pre-kindergarten affordable for every child in New South Wales.

These measures will be available to all households across New South Wales, including Western Sydney. These include:

- A new broad-based **Toll Rebate Scheme** where, every quarter, eligible non-business and small business customers will receive a 40 per cent cash rebate for every dollar spent on tolls once they have reached a minimum of \$375.
- The **Energy Bill Buster program** to help eligible households reduce their gas and electricity bills by providing technology solutions, including solar panels and high-efficiency appliances.
- The **Back to School program**, which provides \$150 to every NSW school child towards the cost of school supplies in 2023, including school uniforms and shoes, bags, textbooks, lesson resources and other stationery.

## Delivering affordable childcare

The Brighter Beginnings Affordable Preschool initiative in this Budget will provide fee relief of up to \$4,000 per child for families with children across both the community and mobile preschool and long day-care sectors.

As part of this Budget, the NSW Government will also create the Affordable and Accessible Childcare and Economic Participation Fund (the Fund) with landmark funding of up to **\$5.0 billion** over 10 years to boost access and affordability of early childhood education and care.

This investment of up to \$5.0 billion, combined with reforms to the Commonwealth Child Care Subsidy, will boost the number of childcare places across New South Wales by up to 47,000 once operating at full capacity in 2026-27.

## Supporting home ownership

This Budget also delivers measures to boost housing supply and support home ownership. Measures available to all households across New South Wales include:

- The introduction of an option for first home buyers purchasing a home for up to **\$1.5 million** to pay an annual property tax instead of upfront stamp duty.
- A two-year trial of a shared equity scheme for up to **6,000** eligible single parents, older singles and first home buyers who are teachers, nurses or police.





## Setting children and young people up for success

A supportive and safe learning environment is integral to fostering learning and development for all children. With more and more families choosing to live in Western Sydney, this Budget recognises the need to invest in new and upgraded schools to support the success and future of children and young people.

Key investments in this Budget include \$5.6 million in 2022-23 and \$266.9 million over four years for new schools in Gables, Nirimba Fields, and Melonba and the redevelopment of Melrose Park Public School.

These new investments, alongside the new projects funded through WestInvest, will add to the significant program of school infrastructure works in Western Sydney which will total \$624.6 million in 2022-23 and **\$2.8 billion** over four years. This record investment includes ongoing projects such as a new primary school in Gregory Hills, an upgrade to John Palmer Public School and the Centre of Excellence in Agricultural Education in Richmond.

## Supporting flood recovery

The floods and storms in February and March 2022 have had devastating impacts on communities in Western Sydney. The NSW Government has worked closely with the Commonwealth Government to swiftly put in place flood-recovery assistance to support families and businesses to recover and rebuild, including a total joint commitment of \$3.5 billion in support across the State.

The NSW Government has provided a number of supports to assist the recovery of all flood-affected areas across the State, including Western Sydney. This includes immediate clean-up assistance for properties and other public, community and environmental assets and waste disposal. Council disaster recovery grants of \$1.0 million have gone to all Disaster Declared LGAs to assist with immediate social, economic and environmental needs. The NSW Government's Back Home Grants are available to flood-impacted renters, landlords and homeowners in the Hawkesbury, Blacktown, Blue Mountains, The Hills and Penrith LGAs. This will aid in repairing homes and replacing essential household items.

Western Sydney residents and businesses in Disaster Declared LGAs can also apply for loans, subsidies and other support programs including:

- The Property Assessment and Demolition Program, offered to property owners for a free property assessment and for the demolition and removal of waste for properties found to be uninhabitable.
- Primary producer concessional loans of up to \$130,000 and grants of up to \$75,000.
- Small business concessional loans of up to \$130,000 and grants of up to \$50,000.
- Not-for-profit organisation concessional loans of up to \$25,000.
- Sporting club concessional loans of up to \$10,000 and \$2,000 grants.
- Transport subsidies of up to \$15,000.
- Disaster Relief Grants for eligible individuals and families whose homes have been damaged or destroyed by a natural disaster.

## Protecting and enhancing communities

This Budget invests in state-of-the-art facilities and technology in emergency services, housing and community infrastructure to ensure Western Sydney residents have a high quality of life.

Key investments and initiatives include:

- Redeveloping Parramatta Police Station as part of the **\$107.9 million** Multipurpose Police Station Program in New South Wales.
- Investing in Aboriginal Child and Family Centres (ACFCs) in Doonside, Minto and Mount Druitt as part of a state-wide investment of **\$98.7 million** to continue and expand ACFCs. This will provide a mix of culturally safe services to support Aboriginal children and their families to be healthy, safe and to thrive.
- More than **\$21.4 million** for Fire and Rescue NSW infrastructure to improve community safety and emergency services across the State and in Western Sydney. This includes investments in new and existing stations in Busby, Oran Park, Marsden Park, Wentworthville and Wentworth Falls.
- **\$8.0 million** in 2022-23 for the redevelopment of the Rural Fire Service Hawkesbury Fire Control Centre.
- **\$7.7 million** to deliver new and upgraded quality homes for First Nations families across Western Sydney.







---

# NSW Treasury

First published June 2022

## NSW Budget 2022-23 publications include:

Budget Paper No.01 Budget Statement	Treasurer's Speech
Budget Paper No.02 Outcomes Statement	Overview
Budget Paper No.03 Infrastructure Statement	Regional NSW
Budget Paper No.04 Agency Financial Statements	Western Sydney
Budget Paper No.05 Appropriation Bills	Women's Opportunity Statement

---

This publication is protected by copyright. With the exception of (a) any coat of arms, logo, trade mark or other branding; (b) any third party intellectual property; and (c) personal information such as photographs of people, this publication is licensed under the Creative Commons Attribution 3.0 Australia Licence.

The licence terms are available at the Creative Commons website at:  
[creativecommons.org/licenses/by/3.0/au/legalcode](https://creativecommons.org/licenses/by/3.0/au/legalcode)

NSW Treasury requires that it be attributed as creator of the licensed material in the following manner: © State of New South Wales (NSW Treasury), (2022).

Cover image credit: Destination NSW

---

52 Martin Place  
Sydney NSW 2000

[budget.nsw.gov.au](https://budget.nsw.gov.au)  
[treasury.nsw.gov.au](https://treasury.nsw.gov.au)

GPO Box 5469  
Sydney NSW 2001

