

**INQUIRY INTO FEASIBILITY OF UNDERGROUNDING
THE TRANSMISSION INFRASTRUCTURE FOR
RENEWABLE ENERGY PROJECTS**

Name: Name suppressed
Date Received: 7 November 2023

Partially
Confidential

06 November 2023

The Director,
Select Committee on the Feasibility of Undergrounding
Infrastructure for Renewable Energy Projects,
Parliament House,
Macquarie Street,
SYDNEY NSW 2000

Dear Director,

Re: Feasibility of undergrounding the transmission infrastructure for renewable energy projects

Thank you for the opportunity to make a submission to this critical inquiry. I write this submission to fully support undergrounding transmission infrastructure.

MY CONCERN: **WHAT FUTURE DO I HAVE, INHERITING, oversized, unwelcomed transmission line infrastructure through my family property.**

I am 21 years old, 5th generation growing up on the family property. Cowridge produces fine merino wool and meat.

I will bear the burden living with **Eight Towers, 3.1 km through property for the rest of my life. Dominating 500kv transmission lines, 75M HIGH INFERIOR STEEL TOWERS, four tiers of cables.**

Overhead transmission lines are NOT environmentally friendly, damaging carbon footprint, ecological, and biodiversity. Caused by 75m towers, 4 tiers of cables. Humelink's 360km infrastructure contradicts the definition of 'clean renewable'.

I am depending on good, long-term decisions assuring the best outcome for everyone.

UNDERGROUND OFFERS LONG TERM BENEFITS

-Less vegetation clearance,

Ecology, biodiversity, and environmental impact largely undisturbed

-Smaller easement

-No VISUAL IMPACT

-Bushfire impact reduced, in a high-risk lightning strike area, allowing access to aerial waterbombing (essential to our property steep inaccessible terrain)

-Avoids 'Cowridge' generational land care projects, 110ha conservation land and wildlife connectivity to significant waterways Yass River, Derringullen Creek (and Bowning Creek - neighbouring property joining our conservation land. 30% of Cowridge is Conservation.

-Wildlife corridors preserved

-Raptor birdlife protected from electrocution

-Maintaining property management and development with small easement,

- Less property infrastructure damage.
- Agriculture management practices will not be impeded
- Family Succession Plan, less impacted
- Eco-tourism opportunities, and property subdivision not impeded
- Less annual line maintenance and biosecurity issues.

-The estimated construction cost is significantly less than Transgrid publicised, (I believe) is LESS than twice the overhead construction price. Long term better value for money.



DERRINGULLEN FALLS NOT MENTIONED ONCE IN THE EIS, WITHIN THE 500kv LINE CORRIDOR.
 110ha conservation land cut in half. Protected Wedge-tailed Eagle nest not recorded, and Vulnerable Little Eagle habitat – electrocution, never to return.
 Rivers of Carbon -ARRC -Australian River Restoration Centre, funded project to re-establish 'cut-out' box wood and re-generation, fence out and protect waterway and wildlife corridor.

Points I wish to convey – NEGATIVE IMPACTS LIVING WITH OVERHEAD 500KV TRANSMISSION LINES

- **ECONOMIC, VISUAL AND SOCIAL LOSSES AND IMPACT, carrying an 80 to 100-year burden**

Eight Towers, 3.1 km, 70M CLEARING EASEMENT through property.
Cutting productive agricultural land, adverse effects for farm management –
HIGH IMPACT IMPEDING livestock yards, Semi-truck loading zone, helicopter access and, Aerial weed control and bushfire prevention.
Loss of invaluable ancient paddock trees, shade, shelter.
Loss of property management and income
Loss of property improvements of tree line corridors.
110ha conservation land and waterways cut in half
VISUALLY Dominating 500kv transmission lines.

- **IRREVERSIBLE ENVIRONMENTAL DAMAGES, loss of biodiversity, and habitat destruction** on rocky escarpments and steep terrain, a wildlife corridor. Transmission line crossing the Derringullen waterway and Derringullen Falls at the widest point, contradicts the EIS criteria.

[\(Refer to re-alignment solution – EIS document pages 5 & 6
-NARROW CROSSING upstream, Black Range Road and 132kv Line\)](#)

Our property demonstrates pro-active projects and productivity, climate ready and high environmental values over generations.

- **Undermining progressive and funded environmental projects protecting waterways** (Rivers of Carbon- ARRC, Landcare, Greening Australia), private conservation and establishing and regeneration of vegetation and significant waterways connectivity. Yass River, Derringullen Creek and Bowning Creek.
- **Electrocution to the raptor birdlife, Wedge-tailed Eagle nesting pair and tree, Little Eagle.**
- **EIS surveys DO NOT PROVIDE COMPREHENSIVE ECOLOGY REPORTS.** A wider community of existing flora and fauna corridor. Impact to (not recorded) superb parrot, scarlet robin, and legless lizard habitat. (Wedge-tailed Eagle will be the next endangered species)
- **MY INHERITANCE, (5th generation) a devalued property. Forward planning - SUCCESSION plan Impacted.**
- **ELIMINATES ECO-TOURISM development plans, diversifying agriculture business strategies with eco-tourism,** Visual and social impacts, waterfall views and ambience of the surrounding environment inflicting major IRREVERSIBLE Impact eco-tourism by a dominating overhead infrastructure.
- **Loss of regional development,** eco-tourism bush-walking tracks and eco-lodge.
- **CULTURAL HERITAGE AND EUROPEAN HERITAGE AREAS,** known locations throughout the property, socially and visually impacted with overhead transmission lines.
- **INCREASED BUSHFIRE RISK, LIGHTNING STRIKE PRONE AREA,** in difficult terrain. Relying on aerial water-bombing, UNSUPPORTED BY AERIAL OR GROUND CREW RFS. Insurance costs cannot be economically sustained or absorbed.
- **HELICOPTER PAD VOID.** Critical weed management on the inaccessible terrain, cannot be safely accessed by land vehicle. **The helicopter landing pad will NOT be operational,** landing on the highest point, next to 120,000Lt cement water tank on the edge of the 70m easement.
- **HIGH IMPACT AGRICULTURAL MANAGEMENT,** livestock camps under towers, tree line shelters cleared, Livestock yards impacted, and semi-truck loading area impacted.
- **HIGH IMPACT 500kv line crossing the 132kv 99m line (to be doubled in capacity/ duplicated),** animal husbandry practices, high volume livestock movements around livestock yards, and semi-truck loading and turning area impacted with 75m tower location and bend in the transmission. Again, re-alignment offers a better solution for both parties.

- *Lack of professional, qualified expertise consultation with Transgrid not providing adequate justification for their route. **Alternative route has many practical advantages. Far outweighs Transgrid's destructive path. So unnecessary, so avoidable.***
 - **TREE LINES CLEARED** - 70m easement. *Over three hundred planted trees, protected lambing paddocks and corridors of vegetation connectivity to waterways. Tree lines are a long-term improvement and investment, these losses cannot be underestimated.*
 - **ADDITIONAL TREES CLEARED** *outside the 70m easement for construction machinery is unacceptable. Information not provided by Transgrid, only recently revealed in the EIS.*
-

have corresponded for three years providing a practical and less destructive line within the original wider corridor.

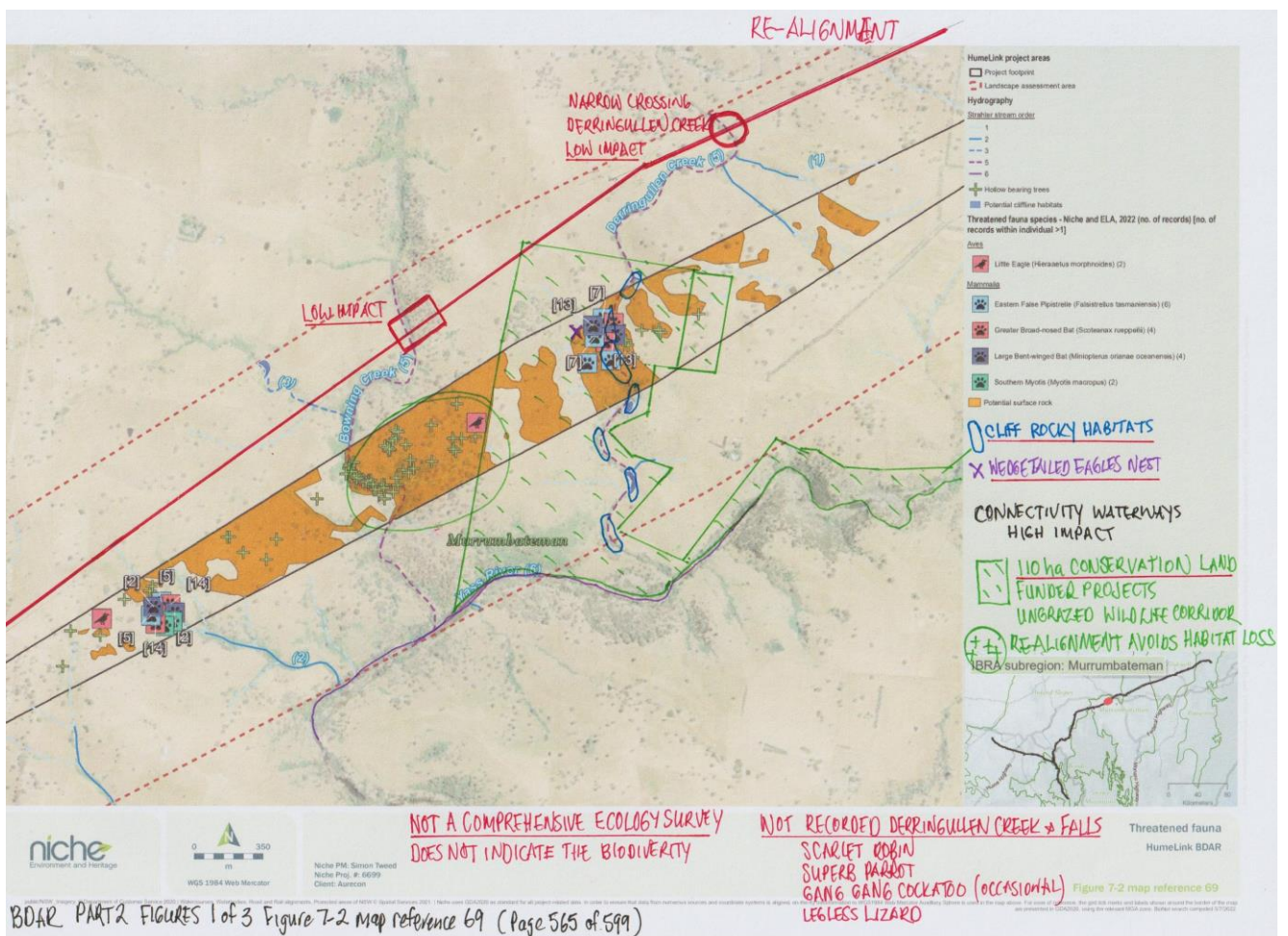
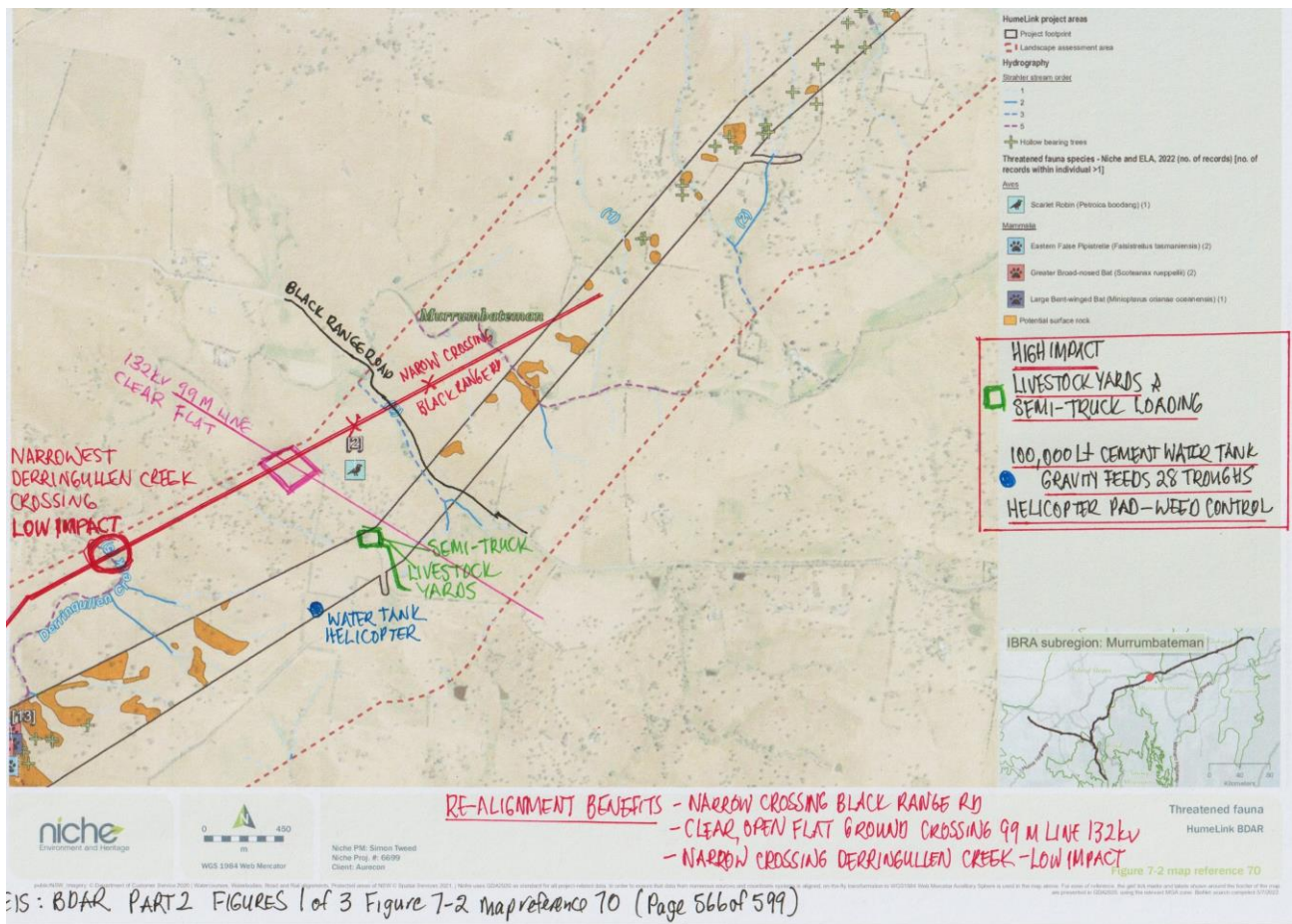
On land we know best. Not Transgrid satellite mapping team in a Sydney office. I am extremely upset and angry the stress and health toll Transgrid have inflicted on my Mum and Grandmother. Transgrid have no respect, making an insulting comment about my grandmother. The continued to pressure the 'sign now' documents and get an extra \$20,000 hoping two women will give up. We will not give up the fight. I want to be proud of Australia, not despise the bad choices I will inherit. The correspondence from Transgrid are false, unjustified.

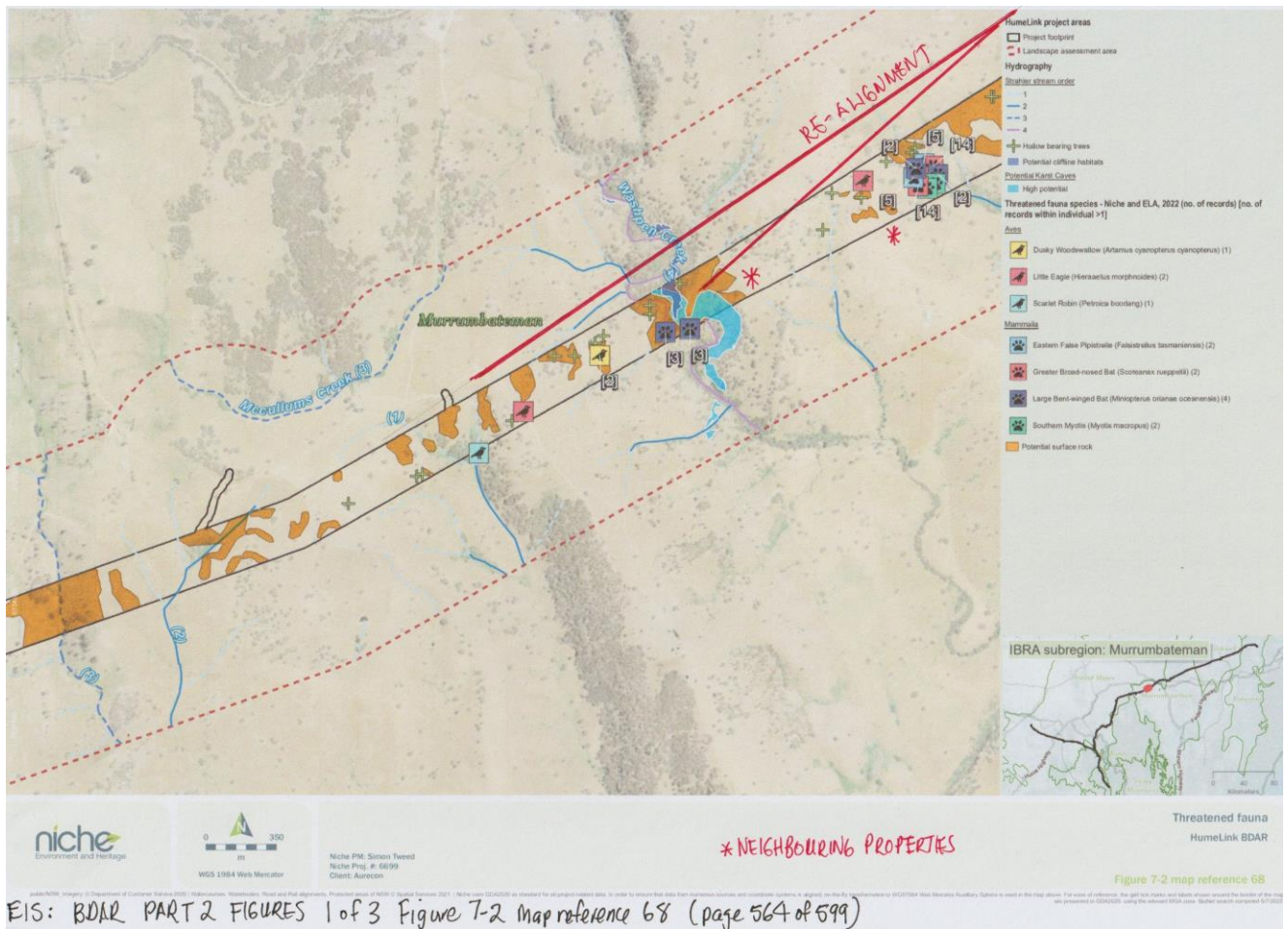
RE-ALIGNMENT ADVANTAGES LISTED BELOW, OUTWEIGH TRANSGRIDS ROUTE AND WOULD BE THE MOST PRACTICAL ROUTE FOR UNDERGROUND.

- **Crossing the Derringullen Creek up-stream from the waterfall, at the narrowest point, less ecological impact area.**
- **Crossing the 132kv 99M line in open (cleared of trees) flat ground, safer construction, minimal environmental impact.**
- **Narrowest span across the Black Range Road. Clear access for heavy machinery construction with minimal environmental damages. Ongoing maintenance benefits.**
- **Overall, less tree clearing, and biodiversity damage.**
- **Protects 3 waterways. Derringullen Creek, and Bowning Creek are within 500-600m to the Yass River, all three HIGH IMPACT on biodiversity connectivity.**

I hope you will consider - UNDERGROUND TRANSMISSION LINES for the long-term benefits.

Yours sincerely,





REFERENCE EIS SURVEY MAP ATTACHMENT:

EIS: _BDAR.PART2_FIG. 1 of 3_Fig 7-2 Map Ref 68.69.70 (pages564-566 of 599)