

**Submission
No 14**

**INQUIRY INTO PLANNING SYSTEM AND THE IMPACTS
OF CLIMATE CHANGE ON THE ENVIRONMENT AND
COMMUNITIES**

Name: Janet Harwood

Date Received: 1 November 2023

The Future is the Natural World



"Biodiversity loss is the most significant environmental problem facing Australia"
Professor David Lindenmayer. (2007) "On Borrowed Time"

Ecosystems, Humans and Wildlife.

All species need clean air, clean water & soils to grow our food.

All is in danger today, our human Survival depends on Wildlife as shown:

"When we cut down old growth trees, we aren't just removing lumps of wood, we're killing hundreds of animals and ecosystems both now and into the future. When we replant a tree to replace that lost wood, it doesn't have any animals living among its branches. We claim it will grow and sequester more carbon, but we're forgetting but plant carbon becomes wasteful unless animals are present. Without animals, free energy leaks back into the system overthrowing the evolved process is that stabilised our world." " We have to accept that there are no ecosystems without animals..... we have to stop thinking about animals and ecosystems as one thing or the other, and realise they are one and the same". Simon Mustoe 2022.

Introduction

Animals, Humans & Ecosystems are the same in Survival Economics.

The Inquiry should be a standing body supported by a "Green Cop" to stop the loss of high conservation value (HCV) land. Native fauna & flora are threatened by a powerful planning & development (P&D) system, dominating rezoning for development, sport and recreation, and controlling environment protection (E&P) systems. Coercive control, conflict of interest, & conservation sought in the planning process, has allowed loss of rare biodiversity rich lands.

Since humans need wildlife to survive, this Inquiry is vitally relevant to future security. An integrity commission is needed to vet, check, correct & "give primacy" to environment, due to changes to the *TSC Act*, *Crown Lands*, and other Laws by previous Government. Australia's position is also unsafe, as the National Reserve System is exposed to rapidly changing biodiversity and climate crises. Crown/Public Lands are open to associations acquiring and converting leases to freehold. Laws do not protect Environment. ¹

While this presentation refers to a local case study area of great environmental sensitivity, and its value to the city of Sydney, it is also representative of last ESAs in NSW. This Transition case study has old gardens, parks and rare near-to-station reserves. These belong to the future city. This indigenous Urban Forest provides: (a) core habitat for urban wildlife to survive via critical habitat & corridor ecology, (b) inheritance of multiple endangered and critically endangered ecological communities of species, and (c) valuable eco-assets which are inheritance for the future city, and provide the chance to upgrade to new land planning controls, concepts & zones, to enable protection of ecological integrity which must deal with the twin crises of biodiversity collapse and climate extremes. ²

¹ Many examples can be given. The first BioBanking Agreement in Sheldon Forest Blue Gum High Forest & Sydney Turpentine Ironbark Forest was the genesis of Biodiversity Offsetting. It was intended to be land protected "in perpetuity for Biodiversity Conservation". It was secretly rezoned for recreation (RE1 zone in LEP2015) thus twisting the biodiversity conservation purpose of this valuable land, into land vulnerable to sale, most likely to be lost through cronies placing pressure on local councillors. Additionally, incorrect rezoning, also without cumulative impact assessment, means this last corridor to stretch from the Lane Cove National Park to the Pacific Highway, is now surrounded by protected soils & seedbank converted to concrete, listed support trees lost to Code 10/50, private certifiers, CDCs, and rapidly changing climatic extremes, in rarest urban forest.

² Where viability and persistence of uniquely evolved, still surviving, urban indigenous fauna and flora, is threatened.

*There is a strong need for Eco-Literacy to secure areas mapped with multiple critically endangered ecological communities, to be given graded protection zoning, for specific areas, crucial for future cities to inherit. This is essential for biodiversity hotspots for Eco-Literacy and for critical habitat and corridor ecology these points have been made before, but are not heard and/or not understood.*³

In last Environmentally Sensitive Areas (ESA) with listed, protected Urban Forest, which is critically endangered, this submission is made on behalf of last indigenous fauna, sheltered in native vegetation remnants, trees and gardens (eg. near-to-station Sheldon Forest for the future city). Mapped Biodiversity in the case study did not receive appropriate & necessary Protection, before re-zoning for development began in 2004. In 2012 despite winning a court case against the planning minister in 2011 (*Friends of Turramurra vs Minister for Planning*) the ESAs received more rezoning, without assessment of cumulative effect. These effects have replaced protected assets, along with biodiversity loss & climate extremes.⁴

There is no study, or attempt to gazette new, strong & meaningful protection zoning, to curb and correct this situation. This was suggested and almost realized in 2012 - but failed to gain the support of the local Planning Department. Conservation sought within the Planning & Development process, means conflict between Protection and Use has never been resolved.

Laws are now so meddled with: they are meaningless for Nature. Last near-to-station urban forest, spreading through gardens, streets and parks, and built domestic architecture of importance have been targeted since re-zoning for development first began in 2003/4.

The powerful planning process excludes input by informed locals. Lack of new concepts, controls and zones for protection & protected areas (PAs), is causing irreversible tree loss, now out of control, as new residents and local government (elected & un-elected) lack awareness of sensitivity. Original residents fear current planning will be the end of rare vegetation and its ecological integrity. This is happening despite court wins and objections.

Recommendations do not get past the conflicted planning department which is also the only department able to rezone or correct wrong re-zoning. A prototype Transition to System change, tested in an AOBV area, worthy of being declared *critical habitat & corridor ecology has been proposed, but is not heard or understood*. The Transition tested in a specified HCV area – can begin concepts, controls and zones, to give environment the primacy it needs for all species survival. The Transition goal is to provide “solutions to protect for all species” in the Age of Environmental Breakdown.

Key words: advanced landscape conservation (ALC), baseline shift avoidance (BSA), critical biological infrastructure (CBI), all species survival, ecologically sustainable survival economics (ESSE), rewilding critical habitat, corridor ecology, ecologically sustainable survival economics, transition, Account FOR Nature.

The Future is the Natural World - Date 1st November 2023. – Please Email

³ *We especially draw attention to the lack of appreciation of the enormous challenges to creating a sustainable future. The added stresses to human health, wealth, and well-being will perversely diminish our political capacity to mitigate the erosion of ecosystem services on which society depends. The science underlying these issues is strong, but awareness is weak. Without fully appreciating and broadcasting the scale of the problems and the enormity of the solutions required, society will fail to achieve even modest sustainability goals.*

<https://www.frontiersin.org/articles/10.3389/fcsc.2020.615419/full>

⁴ This is the prototype Transition from out-dated planning to ecologically sustainable survival economics to assist Nature repair and Accounting FOR Nature in a new Economics of Biodiversity (Dasgupta), AfN, natural capital and other efforts to protect Nature by valuing its protection for 30% by 2030, Half Earth and other.

Pictures show Breach of C/E- (Conservation/Environment) Zone reported with no action taken. Picture below shows removal of a protected tree and large hollow in critical habitat & corridor ecology which was never declared or given proper protection. Both are areas with support - trees for Sheldon Forest. This rapid, extensive loss is un-studied in this rare urban biodiversity and is the opposite to what is needed in a Biodiversity & Climate Crisis. This is in one of the most environmentally sensitive areas (ESAs), which should have been protected for future.



Above C/E Zone at top of Council's Showpiece BGHF Reserve - Sheldon Forest (Picture 2023)
Protected by community - this Land was part of a big action involving 3 ecologist reports, local council & State DPI (2007)



Picture above shows protected tree with a large Hollow (Powerful Owl photo in garden 50m away)
Why is there no protection? Where did the wood go? In the same location one by one at least 20+ similar mature protected trees have been removed on private and public land. Previous LNP Government introduced Complying Development Certificates (CDCs), allowing Private Certifiers and Code 10/50 to impact the ESA with no reference to multiple critically endangered ecological communities (CEEC).

Terms of Reference of Parliamentary Inquiry.

That Portfolio Committee 7 [will] inquire into and report on **how the planning system can best ensure that people and the natural and built environment are protected from climate change impacts and changing landscapes**, and in particular:

(a) developments proposed or approved:

- (i) in flood and fire prone areas or areas that have become more exposed to natural disasters as a result of climate change,
- (ii) in areas that are vulnerable to rising sea levels, coastal erosion or drought conditions as a result of climate change, and
- (iii) in areas that are threatened ecological communities or habitat for threatened species

(b) the adequacy of planning powers and planning bodies, particularly for local councils, to review, amend or revoke development approvals, and consider the costs, that are identified as placing people or the environment at risk as a consequence of:

- (i) the cumulative impacts of development,
- (ii) climate change and natural disasters,
- (iii) biodiversity loss, and
- (iii) rapidly changing social, economic and environmental circumstances

(c) short, medium and long term planning reforms that may be necessary to ensure that communities are able to mitigate and adapt to conditions caused by changing environmental and climatic conditions, as well as the community's expectation and need for homes, schools, hospitals and infrastructure

(d) alternative regulatory options to increase residential dwelling capacity where anticipated growth areas are no longer deemed suitable, or where existing capacity has been diminished due to the effects of climate change

(e) any other related matters (below)

(e) Mayday for Australia's Biodiversity:

In this submission to the above enquiry *The Future is the Natural World* research says, at this late stage for Australia's rapidly declining biodiversity, a standing Commission is required to vet, check & correct the planning & development system – to support Environmental Laws (State & Federal).

The objective of a Transition Town proposed in the case study described below is to update the Planning System to new concepts, controls and zones to Account FOR Nature by protecting ecological integrity, to create a Business U-turn to new directions and jobs for the Economics of Biodiversity. Offsetting must be banned to halt original (in situ) habitat loss. This is a serious and irreversible impact for Nature's survival as shown by Leard Forest (below) & the case study examples of last environmentally sensitive areas (ESA), which belong to the future.

Note: The Case Study shows the NSW Planning Department's Standard Template excludes updated protection, restoration and continuation of ecological integrity (EI), to ensure Ecosystem health/survival for original fauna & flora, soils & seedbank. Ecosystems are vital for human mental and physical health, in rare urban & rural landscapes. EI in urban, rural & regional ecosystems must be protected to enable a Business U-Turn to Protection becoming the New Economics of Biodiversity.

Invitation by this Research to discuss below matters, solutions and timelines to help Environment & Planning Ministers.

“The problem we need to turn our attention to beyond the changing climate is the loss of the very fabric of our planet, the loss of biodiversity.” Half Earth. E.O. Wilson

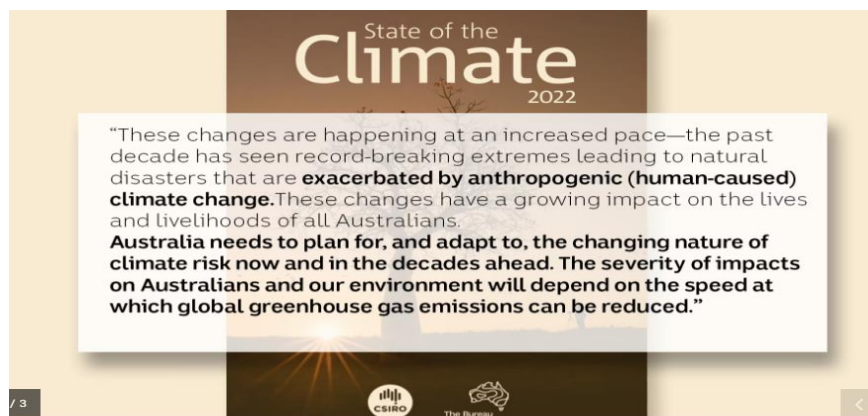
“The evocation of an alternative reality consists at least in part in the battle for language and the legitimisation of a new rhetoric.” W Brueggemann

“First they ignore you, then they laugh at you, then they fight you, then you win.” Gandhi

Contents & Topics

1. Introduction – The Planning Act must sit under the Environmental Act to enable Ecologically Sustainable Survival Economics (ESSE).
2. Critical analysis of the Case Study to support Transition - summary & flaws.
3. We don't have time to waste – There is no substitute for Experience.
4. How quickly must we install a “Green Cop” for Survival? (pages 6-10).
5. How to initiate Correction? Start with “critical habitat & corridor ecology” First protect, restore & fund the best - to test.
6. Advantages of a combined built and ecological public asset landscape for Nature Repair and 30% by 2030 - Protect, Restore & Fund
7. Transition To Ecologically Sustainable Survival Economics (ESSE)
8. Greening ICAC - Recommendations to assist the Inquiry.
9. A Business U-Turn to Account FOR Nature – think ESSE to protect the future.
10. Local to Global – International Platform for Biodiversity & Ecosystems Services. The Economics of Biodiversity Protection is the new Business.

The Future is the Natural World - Date 1st November 2023. – Please Email



Why we need to transition & transform

“As a public servant with the Australian Antarctic Division, she operated inside a system where any outside communication about her scientific work was carefully calibrated, crafted and monitored. But, eventually, that calibration went beyond what Dana Bergstrom thinks can be justified. “I was gagged,” she says. “..... “As an academic, wildlife ecologist Euan Ritchie has had much more freedom to speak about his work, but he’s seen the devastating impact the culture of suppression is having on his peers.”⁵

⁵ https://www.abc.net.au/news/2023-10-24/odyssey-climate-scientists-suppress-truth-or-risk-funds-careers/102968970?utm_source=abc_news_app&utm_medium=content_shared&utm_campaign=abc_news_app&utm_content=other

The Future is the Natural World



“Biodiversity loss is the most significant environmental problem facing Australia”
Professor David Lindenmayer. (2007) “On Borrowed Time”

How quickly must we install a “Green Cop” for Survival?

Invitation by this Research to discuss Transition to ESSE matters, timelines and facts.

Applied Ecology – for Protection and Creation of High Conservation Value (HCV) land in NSW:
(A Case study for Transition to correct flaws in current Planning & Development system):

New Objectives for “kids & wildlife” in the [Age of Environmental Breakdown](#) In NSW, Planning & Development systems have regarded lands which should be of high conservation value (HCV), as “underutilized” and Open Space. The Local Strategic Planning Statement puts biodiversity and riparian matters last. Housing strategies in the case study ESA have been made top priority. Generic Parks are not seen as biodiversity refuges, but as lease opportunities. This is not ecologically sustainable survival economics (ESSE).

New Objectives needed. Despite that the ESA LGA was 2nd after the CBD in Development in 2007, and ten years later Planning was given an award for the “thankless task” of giving the same ESA 80% of 2036 housing targets in 2017, (Government website says this made Council “progressive”), we are now in urgent need of ESSE, to protect Australia’s last biodiversity. The objective of the submission is to Transition to protect, restore and fund *in situ* Nature for Survival Economics. Threats to the future are best corrected on site, in last ESAs, in order to save the last ecological integrity of *environmentally sensitive areas (ESAs)*. The objective is urgent as Awareness & Eco-Literacy are low. ⁶

1. Problem - Nature is in exponential decline. Ecosystems are breaking down. Insect and wildlife populations are plummeting, yet insects & wildlife are “ecosystem engineers” for survival. Most do not know the Australian Continent is in Environmental Crisis. To protect ecological integrity for the future, last ESAs need protection first. However, planning and development advice has not been fit to protect landscapes of ecological integrity. The power of the developer needs to be corrected and curbed by new protections to match IUCN protected area (PA) global demands for 30x30 (30% protected by 2030).

Recommendation for Eco-Literacy - *There is strong reason, for areas with multiple critically endangered ecological communities critical for future cities to inherit native wildlife, to have new graded protection zoning. This is essential for biodiversity hotspots, critical habitat & corridor ecology, mangroves, rarest urban forest, wetlands: to enable survival of all species.*

2. Problem - If protection is left to volunteers, laws are not working. In paid jobs the tendency to protect *status quo* creates a strong Conflict of interest between protection and use of land. Further, when the same department is the only department able to advise and recommend re-zoning for development, this has led to Suppression of sensitivity. Problems are exacerbated by lack of knowledge of wider environmental issues such as climate and biodiversity, and policies and laws – leaves the situation open to coercive control by planning & development systems.

⁶ **The science underlying these issues is strong, but awareness is weak.** Without fully appreciating and broadcasting the scale of the problems and the enormity of the solutions required, society will fail to achieve even modest sustainability goals.”
<https://www.frontiersin.org/articles/10.3389/fcosc.2020.615419/full>

Recommendation to correct – This submission shows why the planning & development systems (USE emphasis) needs to be separated from Environment systems (PROTECTION emphasis), for all species survival. in last ESAs, to make up for deep problems requiring the restoration and protection of ecological integrity, a separate Ecology Department is needed for meaningful Accounting FOR Nature – to be independent of Planning flaws (below).

3. Problem – Long term operation of flaws allow serious and irreversible consequences to begin cumulative impacts which set in motion environmental breakdown not easily visible especially if Planning & Development systems see “bushland” as underutilized and language is conveniently vague (Open Space, Green Space, Natural Area etc).
- For example, removal of surrounding trees impacts core habitat in last Reserves. In the ESA case study, NOTING EACH OF 5 PRECINCTS IS EQUALLY INTENSELY RE-ZONED in the Town Centre for development. This has resulted in direct and indirect tree removal on Public and Private lands.
 - Progress in tree removal creates the “Greyfield” classification to attract development to the re-zoning. Add to this the fact that initial protection of the ESA was waived. This is something new eyes cannot see, and fly-in fly-out jobs are not interested in.
 - Cumulative effect Death by 1000 cuts. This cumulative re-zoning is called “master-planning” but will make Turrumurra bigger than Hornsby. (LEP194, LEP2012, LEP2015). However, this re-zoning was carefully hidden by “consolidation” (2004 to 2015) and remains till today. New councillors and community do not see this, nor are they told about it. Not even a Court Case won by Friends of Turrumurra was able to correct this anomaly – most visible in Turrumurra. Add to this the fact that Hillview Heritage is zoned for development – AND the 5th precinct the “deferred matter site” was zoned for development and by sleight of hand deferred out of view of LEP2012 .
 - Nett Loss of the rarest urban forest has happened in plain sight - as a result of exactly this ruthless planning that is not afraid to threaten, block protest or opposition.

Recommendation to correct – scrap incorrect LEP2015 in case study ESA for Transition and refer to “Green Cop” if necessary, to correct incorrect process. Analysis of above identified planning flaws, indicates a strong case for New protection zones & protected areas (PAs), in habitat for multiple threatened ecological communities..... IF the future city is to inherit any rare urban forest and the most unique wildlife.

Investigation needed for kids and wildlife to inherit rare urban fauna and flora - The Case Study in Turrumurra shows, all Mapped Biodiversity was sacrificed to 40+ massive apartment blocks delivered to a development industry without records. Converting of mapped biodiversity to concrete applies specially to the “Deferred Matter” site between Duff to Finlay Streets and mapped Biodiversity in the Town Centre.

4. Problems – Planning prefers “in isolation” planning rather than landscape planning. Landscapes are more able to protect critical habitat and corridor ecology. The Planning & development system’s “Master planning” is an architect’s perspective – not an ecologist perspective. An architect’s view allows maximum re-zoning to assist the development industry. Further, the planning & development system regards high conservation value (HCV) land as “underutilized” Open Space. Generic Parks are not seen as biodiversity refuges, but as lease opportunities. The Local Strategic Planning Statement (LSPS) puts biodiversity and riparian matters last. Housing strategies in this LSPS are top priority. This despite that in 2007 the LGA was 2nd after the CBD in Development. Ten years later in 2017 Planning was awarded for the “thankless task” of giving the ESA 80% of 2036 housing targets. This the State Government website says, made Council a “progressive” Council.

Recommendation to correct. – How do we save a critical Landscape in this situation? In the nominated critical habitat & corridor ecology (delayed since 2009), scrap current rezoning to allow a prototype for Transition. This will enable multiple new concepts, controls and zones to be implemented in the test area to protect and restore ecological integrity and update and renovate the planning system for biodiversity and climate crises.

5. Problem combined damage to the Environment in critical habitat & corridor ecology. This is out of control due to the joint effects of: (a) previous Government's Complying Development Certificates (CDCs), (b) Code 10/50 freedom to clear vegetation, (c) ignorance of status of nationally significant vegetation due to absence of data and reports, (d) incorrect classing of LGA as "Greyfield" and rare reserves classed as "recreational facility asset class", (e) the rapid removal of significant protected trees, (f) continued un-corrected planning flaws (below).
6. Secret Lease in Sheldon Forest shows warped planning process. The BioBanking Agreement was initially set up to protect land for Biodiversity Conservation "in perpetuity". GIPA shows Agreement #132 in Sheldon Forest was misinterpreted (2011-2014) as an Operational "management" tool. This allowed "internal" non-transparent decision-making (2011-2017). Internal decision-making made it possible for cronies to assist the secret lease. It is not known if other protected Reserves were also given the same planning treatment.
7. Consultant reports Briefings are given without community input before Detail (urban biodiversity is an "inconvenient truth"). Requested by various Submissions, in particular the Urban Forest Strategy page 8 and also 10-14, these SENSITIVITY reports have been ignored
8. Indigenous involvement in protection zoning. Fear of fires is a climate extremes result removing the last wildlife "ecosystem engineers" to support "hazard reduction burning", "back-burning" and other "burns" and "tidying up".

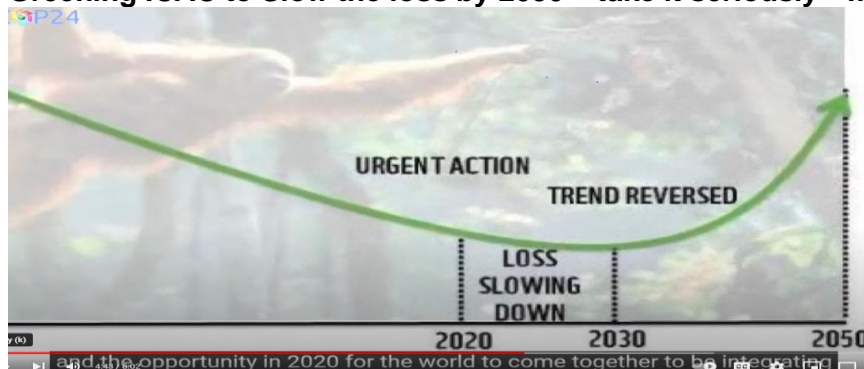
Recommendation to Correct As a result of above – Dangerous, damaging consequences need to be arrested. If old gardens, soils & seedbank are disappearing, mature trees are removed (escaping State, Federal and Local controls), then Dieback, rootzone moisture, multiple tree loss in the same area must be stopped in the Age of Environmental Breakdown.

New Planning controls needed in proposed critical habitat & corridor ecology:

- (a) scrap the Town Centre re-zoning for development across 5 precincts in preparation for Business U-Turn, working Restoration Australia.
- (b) stop / remove private certifiers and CDCs in the nominated Transition Area,
- (c) stop / remove the code 10/50 rules in the nominated Transition Area and
- (d) as suggested by the Department of Planning a C/E5 zone be established by State Government – this by a Planning Proposal at the Local Government level.

The Intergenerational tragedy of wildlife loss, and impact on human survival, needs the Inquiry to provide SOLUTIONS (see Problems & Solutions).

Greening ICAC to Slow the loss by 2030 – take it seriously - we don't have time.⁷



Scientists Warnings Tony Juniper, Stuart Scott & Victoria Hurth.

Part 1 <https://www.youtube.com/watch?v=loAdZPeK9A0>

Part 2 <https://www.youtube.com/watch?v=kRTpYYIfCqw>

⁷ <https://www.wedonthavetime.org/events/cop27>

Other Problems

1. BioBanking & Biodiversity Offsetting - As the NSW Auditor General knows from 2011 and before, Biobanking was a method of applying the financial system to Nature. It initiated and appeared to develop the Biodiversity Offsetting scheme.

How much original fauna & flora habitat has been lost to DAs allowed to remove rare urban biodiversity? The "off set" Register, BioBanking Management Register and record of status change to Biodiversity Stewardship have not been made available.

2. Suppression of sensitivity. As of today, multiple LEPs operate as Development Applications and Approvals are rolled out. Demonstrating lack of understanding of the damage caused by the absence of sensitivity data, multiple Council & Community reports have been kept out of view, as follows:

- a) Council's own report regarding inappropriate 10/50 code (to this ESA) was buried from 2016 to 2020. When the General Manager was made aware of this, he released it to Friends of Ku-ring-gai Environment (FOKE). As questions put to the Planning & Development department head, were never completely answered, nor copied to Councillors, it is clear from previous efforts, that councillors are not advised or informed of decisions by the only department that can re-zone for anything – including development, recreation and correction of error.
- b) The 2013 Ku-ring-gai Biodiversity and Riparian Lands Study is found on the Internet but not referenced nor are councillors and community referred to it – it is the ultimate academic guide to the LGA's critically endangered legally listed and nationally significant vegetation. It includes baseline maps prepares with the NPWS studies and surveys of Fauna and Flora.
- c) Royal Zoological Society article A previous Technical Officer who detailed the sensitivity of this LGA in in this article is no longer with Council (see link) https://www.academia.edu/7437849/A_hotbed_of_biodiversity_A_natural_history_of_the_Ku_ring_gai_council_area
- d) The Environmental Baseline Study (2000) has been consistently removed from view. LEP187 (2003) for Environmentally Sensitive Areas was dropped by the Department of Planning just before LEP194 (2004) was gazetted. This shows determination of Planning & Development systems to use any means to avoid true protection of rarest urban biodiversity.
- e) Court Win suppressed. The Court Win by Friends of Turramurra was a pyrrhic victory for more than one reason. From 2012 behind closed doors the Planning Strategy has been to standardize the LEP function applied to this LGA. Papers sent to this research show how this was achieved. As Plans of Management opened reserves to regional recreation and sports grants by the previous government encouraged regional sport a recreational advisory group refused combined discussion and a consultant report used statistics inappropriate to the sensitivity of the LGA to allow even further Use of the unprotected HCV ESA.
- f) Transition Proposal ignored. All efforts by community groups denied, delayed & disregarded. Pattern of Process followed for Sheldon Forest, Little Village Park and Hillview, shows how achieved. Submissions fell on deaf ears, as predetermined plans are progressed in the ESA.

3. Removing protection of environment. The General Manager tried without success to protect the environmental sensitivity of the case study, the protection of the LGA being in his interest - but was removed himself without explanation by political forces. ⁸

4. Death by a 1000 cuts – The case study ESA being unprotected and awareness of sensitivity suppressed Use of the ESA outstripped Protection. Blame was placed on the General Manager who was subordinated by the Planning & Development system. Note: this role needs new powers to overcome such subordination. Lack of Eco-Literacy in decision-making together with burial of multiple sensitivity reports – as well as an open gate to Complying Development Certificates (CDCs) & Code 10/50, ignored protection and restoration of the ESA, flagship to critically endangered ecological communities recorded in those sensitivity reports. Also visible across NSW (pages).

⁸ In the case study, the GM's Public Service role evolved over time. Experience is needed to protect rare environments from a planning & development system conflicted between Protection & Use of rare assets. A political tick of approval was clear as the GM's protection was an obstacle (to outdated over-development).

- 5. Conflict of Interest & Cumulative Environmental Impacts** Analysis of Conflict of Interest shows how destructive this is for employees and community. The effect on Rare Urban Nature has not been studied. Together with various ways by which sensitivity can be and has been suppressed, resulting lack of knowledge underpins destructive impacts of rezoning for development.
- 6. Poisoning & Removal of trees, breached E zones, protection laws,** Lack of knowledge is a propelling force creating negative results for Nature (without protection appropriate to an Age of Environmental Breakdown). Planning & Development systems (P&D System) created cumulative environmental impacts, at the same time erasing sensitivity details. Public and decision-makers, ignorant of the true value of this ESA to the future city, automatically proliferated the damages being done. Increased Court cases, paid for by locals were also dealt with in questionable ways.
- 7. Consequences of blacked out sensitivity detail** That the final Urban Forest Strategy now on Council website has no Fauna Management Plans (FMPs), no Recovery Plans, no new zones to protect, and no Protection Strategy, has crushed Eco-literacy. Consultant Reports briefed and publicly exhibited without reference to the **Species Richness Map found in the 2013 Ku-ring-gai Biodiversity & Riparian Study.** ⁹
- 8. No records and no Advisory Group consultation to inform of rapidly changing local conditions and sensitivities...** The total cost of multiple Consultant Reports, briefings behind closed doors, wrong re-zoning inappropriate to sensitivity (Built & Natural), lack of historical data, is not really understood by decision-makers and is reflected in court cases. As in all ESAs, these pressures are added to climate extremes impacting our most iconic wildlife.
- 9. Generic Parks Report emphasis on Leases - burying Biodiversity regeneration.** This process fulfils State Department's blindness to Biodiversity on Crown Land. Note - This report was made effective before being adopted by Council (see dates). It removed visual pictures of Parks, was given to a new employee (unknown briefing, same as Urban Forest Strategy). It concentrated on Leases, foreshadowing likely disposal to freehold, and down-graded the value of Parks to the LGA's rare biodiversity (just as intended by changes to the Crown Lands Management Act).
- 10. Effect on culture and psychology of residents.** Bushcare volunteers leave and community suffers media accusations of NIMBYism, intimidation by Planning & Development system needs to be exposed to an integrity body, to allow smooth correction of planning flaws. User groups attacked protection groups. Ecological integrity of the nominated original critical habitat & corridor ecology being damaged substantially.

Recommendation to correct – Correct flaws & suppression of sensitivity, update out-dated concepts, controls & use C/E5 zone as proposed Landscape Museum & Transition Town. In last ESAs establish and re-establish Environmental Advisory Groups composed of Environmental Leaders. For too long, community protecting, and environmental groups have been ignored, attacked, blocked and belittled in various ways.

In the case study, the General Manager in whose interest it was to protect the LGA - has been removed without explanation. Transition exposed to loss of that evolved experience. ¹⁰

Attachments - Nature does not understand cheating, bad laws, and financial systems.

⁹ See "absence of data is a gift to developers" <https://www.abc.net.au/news/2023-09-04/nsw-bionet-missing-four-years-wildlife-recue-data-/102805330>

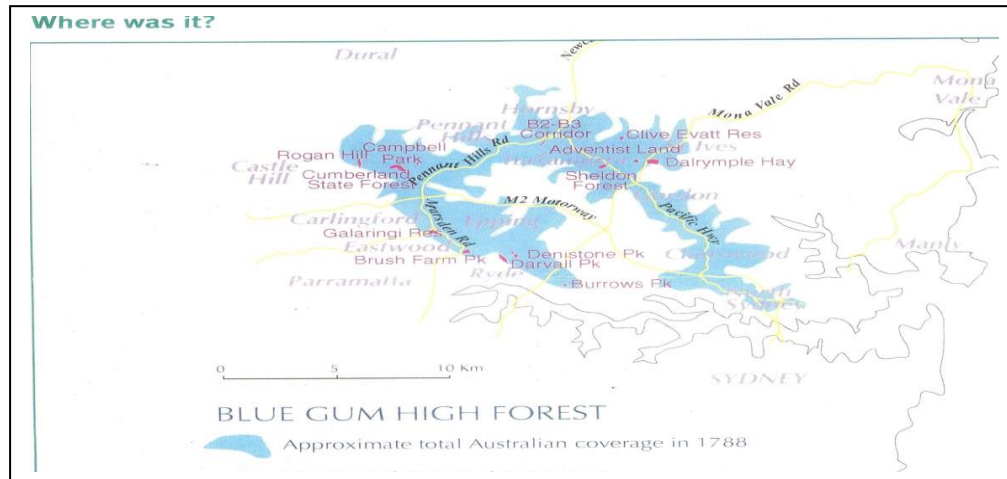
¹⁰ *Suppression of sensitivity and Conflict of Interest is thus allowing MORE damage by Cumulative Environmental impact.*

The Future is the Natural World



"Biodiversity loss is the most significant environmental problem facing Australia"
Professor David Lindenmayer. (2007) "On Borrowed Time"

"Can we save our last best forest?"



"How do we save critical landscapes?"

Why economists Ken Henry and Ross Gittins and the authors of Game of Mates know: this is Intergenerational Tragedy for kids and wildlife. Destruction of Nature is flourishing as is cheating in the financial system. Nature is voiceless, so regulation is not happening.

LEP 2015 pushed through extending re-zoning for developers "deferred matter" and behind closed door planning continues flaws in Planning & Development system across NSW, subordinating Office of Environment & Heritage (OEH). With laws not assessing cumulative impacts - development has been allowed in soils and seedbank of *in situ* (original) biodiversity. Despite there being little left for Nature's security, developers now demand flexibility and certainty despite cumulative impacts.

Intergenerational tragedy of wildlife loss and impact on human survival, needs the Inquiry to provide SOLUTIONS policed by Greening ICAC (See Below).

The EPBC Act does not consider rezoning an Action - and proponent can request a re-zoning review, from the Department of Planning (note... greater number of Zones to Use than Zones to Protect).

Planning flaws disregard most destructive development plans made behind closed doors which operate in areas of protected vegetation for ecological communities of species (needing soils, seedbank & vegetation):

- Complying development certificates (CDCs) in ESAs of rare fauna and flora
- Crony Capitalism using past political ticks of approval.
- Secret Plans and Projects going back to 2006/5
- LEPs tailor-made for developers
- Zombie DAs for political donors
- Breach of C/E zones
- Code 10/50 rules
- Other

The Future is the Natural World

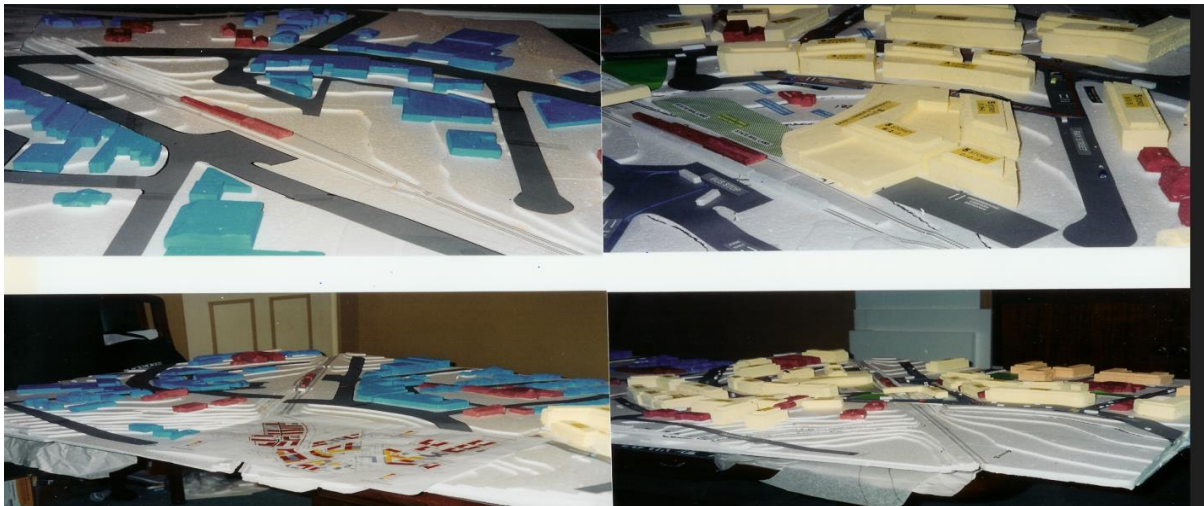


"Biodiversity loss is the most significant environmental problem facing Australia"
 Professor David Lindenmayer. (2007) "On Borrowed Time"

How to Transition to save critical landscapes?

Is current re-zoning in the proposed TTT (The Transition Town) appropriate for biodiversity & climate Crises? Can this re-zoning for development protect the last best near-to-station Urban Forest from cumulative impacts of over-re-zoning?

Community made model – COMPARING before re-zoning (left) after re-zoning (right)



Or will it complete damage already done by suppressing rare urban biodiversity? ¹¹



ACTION NEEDED to Update to a true MASTER-PLAN Currently all 5 precincts are re-zoned for massive development to make Turrumurra bigger than Hornsby. This will destroy near-to-station critically endangered ecological communities of Urban Forest

Master Plan with a Landscape Museum in a Health & Wellbeing Transition Town in 5 Precincts.

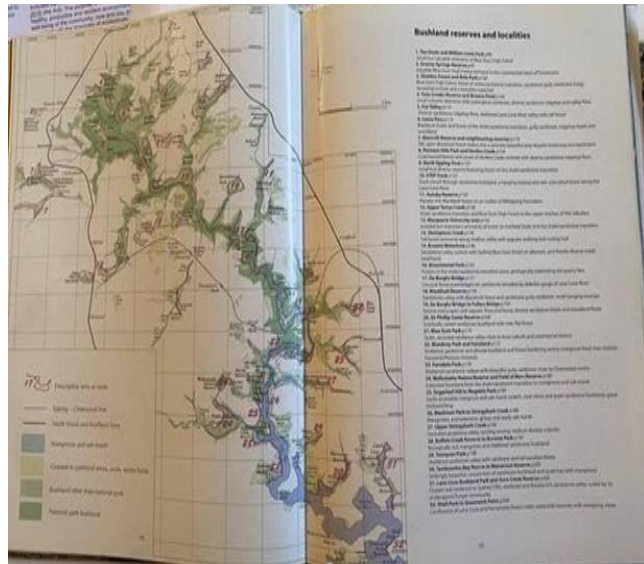
¹¹ Predetermined plans to develop proposed TTT have progressed by segments in the DPE since 2003, 2006, 2008, 2012, 2015.

https://www.abc.net.au/news/2023-10-24/odyssey-climate-scientists-suppress-truth-or-risk-funds-careers/102968970?utm_source=abc_news_app&utm_medium=content_shared&utm_campaign=abc_news

What is the wider message of the proposed TRANSITION TOWN?

Nature does not understand borders, laws, and finance.

Sheldon Forest & Granny Springs Reserves are remnants of larger Native forests which were logged after 1788. The soils and seedbanks remained, regenerated and regrew but once replaced with concrete, bitumen or synthetic grass, rare urban forest remnants - will never regenerate.



See

Soils, fauna and flora in "Field Guide to the Bushland of the Lane Cove Valley" by J. Martyn (STEP Inc.)

Eco-literacy gives public understanding that The Urban Forest Strategy must be a Protection Strategy to secure ecosystems and endangered Fauna & Flora for all species survival - including humans in the Future.



Maps & Laws meddled with allow rare native vegetation to be lost.

The Transition Town needs new concepts, controls and global thinking to protect rare Urban Forest for the Future. "Open Space" & "underutilized" is not science-based language for survival of EEC/CEEC Reserves which belong to Sydney and the Future.

LOSS OF RARE URBAN FOREST RESERVES IS NOT ECO-LITERATE PLANNING FOR EXOLOGICALLY SUSTAINABLE SURVIVAL ECONOMICS (ESSE).

How Serious are the Implications for FUTURE Kids and Wildlife if we don't Transition to ESSE?

In 2012 despite winning a court case in 2011 the most environmentally sensitive areas (ESAs) in Turrumurra's critical habitat & corridor ecology received No rezoning for protection. Today this re-zoning for development is out of control for multiple CEECs.

Nature does not understand Laws, Financial systems (Offsetting). The State's financial and legal system via a Landscape Museum in a Transition Town must change the planning system to greater protection for Landscapes within LGA or extending beyond borders. Ecological integrity needs to be studied and Rewilding to help mental health and reverse the downward trajectory of Nature.

Part 1 <https://www.youtube.com/watch?v=loAdZPeK9A0>

Proposed Transition to Ecologically Sustainable Survival Economics (ESSE) will create a U-turn to protect, restore and fund critical habitat and corridor ecology. This should be declared critical biological infrastructure and zoned for special protection to protect the National Reserve System (NRS).

Part 2. <https://www.youtube.com/watch?v=kRTpYYIfCqw>

Protection is the new Business for the Life-support of all species. Submission by this Research to the Urban Forest Strategy was ignored by the planning and development system, making the council adopted Urban Forest Strategy incomplete and dated. This submission has proposed a Transition to ESSE supported by an Ecology Department to provide Eco-Literacy through a programme of Signage to Rewild.

Protection for rare biodiversity was further reduced by using a Standard template.



Chain of Concrete 500 m away from C/E-zone & Sheldon Forest BGHF

Is this Eco Literate planning? Critically endangered ecological communities (CEECs) are not Greyfield. They are rare urban forest Greenfield. They must be protected in the Age of Environmental Breakdown with new concepts, controls, and zones in planning.

TURRAMURRA & KU-RING-GAI ARE NOT IN A GREYFIELD BELT - THEY HAVE RARE URBAN FOREST CRITICALLY ENDANGERED ECOLOGICAL COMMUNITIES



XX

Do Decision-makers understand the implications of Biodiversity loss?

The Future is the Natural World



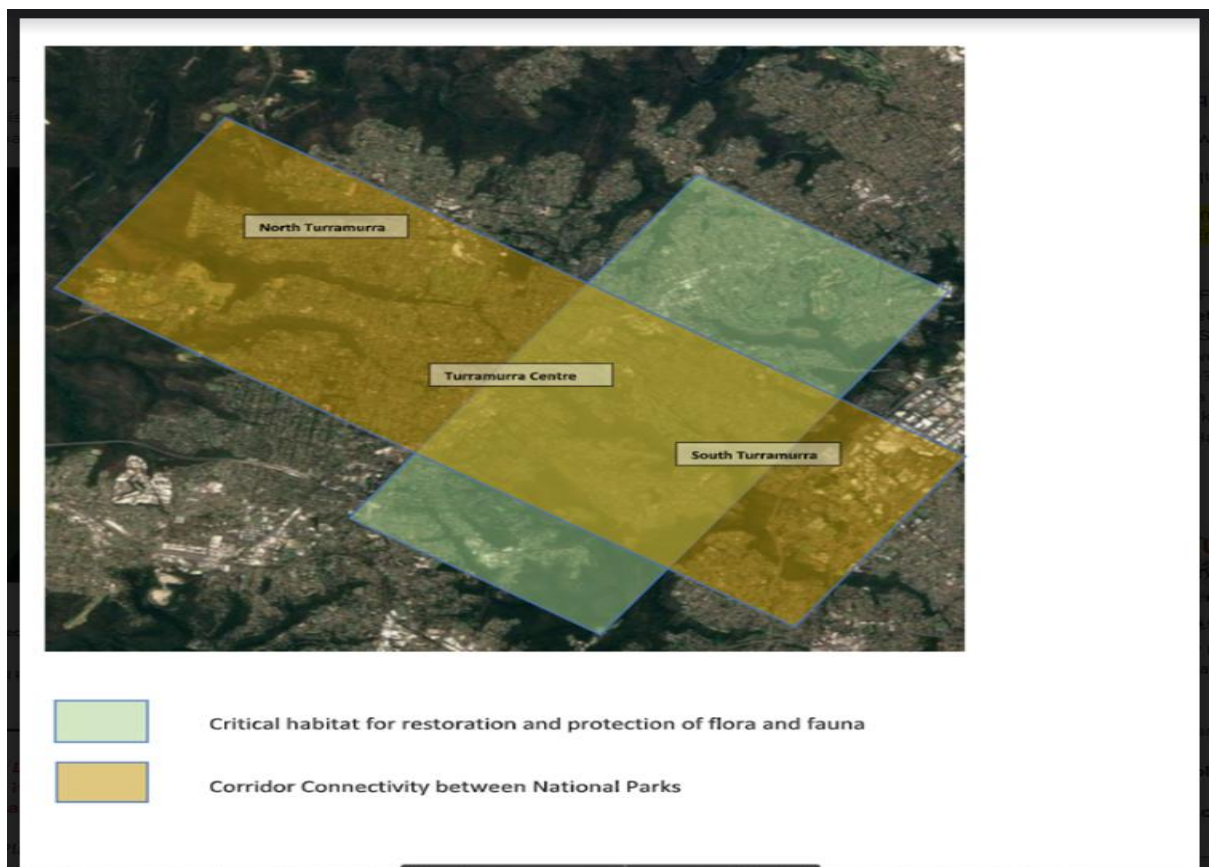
"Biodiversity loss is the most significant environmental problem facing Australia"
Professor David Lindenmayer. (2007) *"On Borrowed Time"*

Humans need Nature - Nature does not need humans.

A secret plan to USE this last Urban Forest appears to be happening as Planning & Development continue to "Greyfield" this last rare urban biodiversity critical habitat and corridor ecology. The National Integrity Commission needs to capture this ecological integrity before it is lost.

The Race of our Lives (local to global solutions)

"Substitute Technology for Ecology" Mustoe. Critical habitat & corridor ecology. Transition Landscape includes the Town Hall to the Secret Garden to Hillview and Fox Valley Road. New concepts, controls and zones in the Transition Landscape will help Protect, Restore and Fund Ecologically Sustainable Survival Economics (ESSE).



Solution to Account FOR Nature in the Economics of Biodiversity

Transition started in this LGA, because of its native soils, seedbank and vegetation, must be conducted with an Ecological Integrity perspective. Why? Because humans will not survive without wildlife as "ecosystem engineers". Mustoe 2022. This is not understood by planning & development systems yet.

The Future is the Natural World



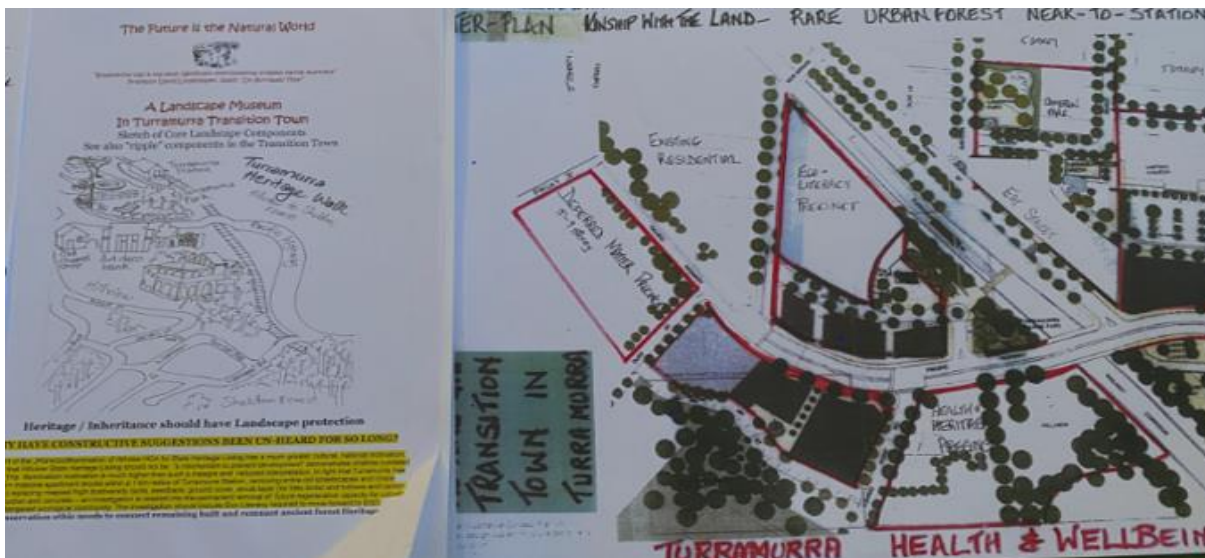
"Biodiversity loss is the most significant environmental problem facing Australia"
 Professor David Lindenmayer. (2007) "On Borrowed Time"

"How do we save critical landscapes?"

"Can we save our last best forest from cumulative impacts of over-re-zoning?"
 Community made model – COMPARING before re-zoning (left) after re-zoning (right)



Is current re-zoning in Turrumurra appropriate for biodiversity & climate Crises?
 Or will it complete damage already done by suppressing rare urban biodiversity? ¹²



ACTION NEEDED to Update to a true **MASTER-PLAN**
 Why Master Plan a Health & Wellbeing Transition Town with a Landscape Museum?
 All 5 precincts are re-zoned for massive development to make Turrumurra bigger than Hornsby
 And to destroy near-to-station critically endangered ecological communities of Urban Forest.

¹² https://www.abc.net.au/news/2023-10-24/odyssey-climate-scientists-suppress-truth-or-risk-funds-careers/102968970?utm_source=abc_news_app&utm_medium=content_shared&utm_campaign=abc_news_app&utm_content=other

The Future is the Natural World



"Biodiversity loss is the most significant environmental problem facing Australia"
Professor David Lindenmayer. (2007) "On Borrowed Time"

Proposed Landscape Museum for Transition to Eco-Literacy "The Little Village Park, Hillview HCA & Sheldon Forest Sanctuary" Use new planning concepts, controls and zones in proposed Transition Town.

A Transition Town must test new concepts & protection zoning in last critical habitat of MNES. The Heritage Trail will be a Landscape Museum to give Eco-Literacy through visitor experience & signage. The Transition Town enables rescue, re-generation, restoration & Eco-literacy. Why have planning controls and proposals for heritage not protected the Hillview Heritage Precinct to teach decision-makers & public about its rare Urban Forest curtilage - for wellness of all species ?



The Little Village Park "Return of the Ark" - importance of Forests, Ku-ring-gai's railway & Hillview (C/E5)
\$320,000 was allocated to the Little Village Park for restoration and improvement in 2013 – but was "forgotten". This money could be used on suggested signage to raise ecological awareness and **Eco-Literacy through heritage / community native garden (habitat corridor connectivity with pocket parks and Eco literacy spaces.**
C/E5 gazettal should ensure security of public ownership – for early history and connections.



The whole Precinct's heritage is secured by tailored C5/E5 Zoning for "Return of the Ark" The Hillview Heritage Conservation Area (red line) is State Heritage for recognition of layered history since settlement (T. Boyd land grant). The Hillview Nomination for State Heritage Listing seeks to elevate recognition of critically endangered setting and siting by the C/E5 zoning recognition of advanced landscape conservation (ALC). Public Assets need funding in the R-Economy - to be used for environmental awareness raising. (C5/E5 zoning). Adaptive reuse should match similar precincts: the *Grounds of Alexandria, Paddington Reservoir and The North Sydney Coal Loader.*



"Return of the Ark" C5/E5 secures BGHF Urban Forest sanctuary for rare birds and ground bound wildlife. This showpiece must be protected as a Wildlife Sanctuary & for citizen science & Eco-literacy. Planned with empathy for the future city, The Sheldon Forest proposed Wildlife Sanctuary is last critical habitat walkable by foot from two railway stations – Turramurra and Pymble. Rare wildlife seek refuge in the levels of indigenous vegetation provided by this endangered habitat. It is the last publicly owned Blue Gum High Forest to stretch to the Pacific Highway. RE1 zoning must be changed to a new C/E5 zoning for true "in perpetuity" **protection of Biodiversity and** for public appreciation & education. The EPBC Act will assist the Landscape Museum to teach the visitor about Ecological principles and planning controls must address rapidly changing local conditions and become eco-literate about biodiversity & climate. **See wildlife in near-to-station Urban Forest.**

The Future is the Natural World



"Biodiversity loss is the most significant environmental problem facing Australia"
Professor David Lindenmayer. (2007) "On Borrowed Time"

Conflict of Interest between Protection & Use Cooperation between departments and But Only One Department can rezone or correct zonings.



This is a major problem communities face - trying to protect Crown & Public land.

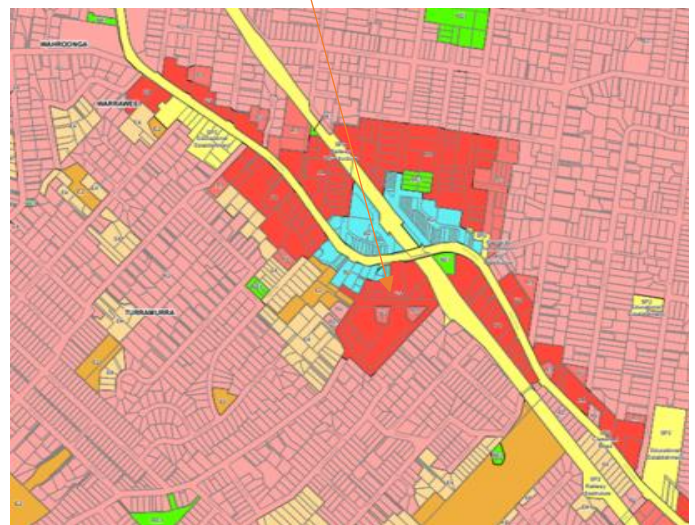
That planning and development systems are the only departments that can re-zone for development (or correct zoning) locally, and at State level - needs correction for the future.

Many residents don't know what the implications of this exclusive right are – but those who look closely and see that their submissions and warnings of local environmental conditions are not heard Know how dangerous this ultra vires power really is (for the environment).

Public do not know and are not heard or advisedbut indicators like the Little Village Park show how Public Hearings are of no use if a Pre-determined plan is left in the hands of the planning and development system. Hillview Heritage is zoned for development and the entire sensitivity is zoned to be wiped out – old gardens are amalgamated into 40+ massive apartment blocks – in a 1 kilometer radius of Turrumurra Station.

The State Government (department and ministers) have urged this research “go to Council”..... but “Council” is dominated by the Planning & Development system that has blocked, ignored, belittled, refused and threatened the effort of local environmental groups to provide a true Master-plan to protect near-to-station rarest Urban Forest.

IS THIS MADE POSSIBLE BY SUPPRESSED SENSITIVITY OR BY COLLUSION BETWEEN DEPARTMENTS – OR BOTH?



The Future is the Natural World



“Biodiversity loss is the most significant environmental problem facing Australia”
 Professor David Lindenmayer. (2007) “On Borrowed Time”

Persistent Re-zoning for Development is a Key Threatening Process (KTP) for Australia’s last fauna and flora.

DON'T SUPPRESS SENSITIVITY - TELL THE TRUTH ABOUT REZONING

Inheritance Value of Critically Endangered Ecological Communities (CEEC) for Eco-literacy.

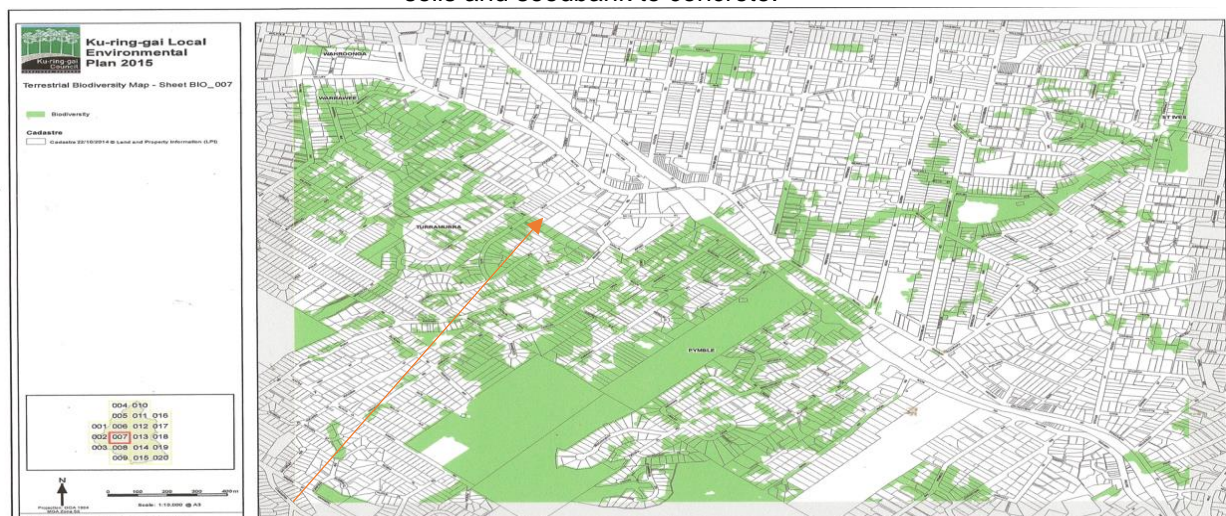


Cumulative re-zoning by LEP194 + LEP2012 remains un-corrected in LEP2015.

Above (right) Re-zoning painted across the whole “Town Centre” has totally wiped out mapped protected biodiversity in the town centre. Entire streets and old gardens disappear, by dilapidation and demolition, delay and denial.

The deferred matter site rare Urban Forest lost to “crony” planning.

Above (left) the “deferred matter” site – planning & development system allowed conversion of rare soils and seedbank to concrete.



LEP 2015 biodiversity map - zoning for development not shown.

Zoning for development has already wiped out rare near to station rare urban forest
“Fatal flaws in rezoning” - soils and seedbank converted to concrete.

Cumulative loss via removal of trees.

The Future is the Natural World



"Biodiversity loss is the most significant environmental problem facing Australia"
Professor David Lindenmayer. (2007) "On Borrowed Time"

Secret rezoning for over- development: despite rare setting of Transition Town

Below shows how Departments co-operate with developers to force development on Hillview Heritage (zoned for development)

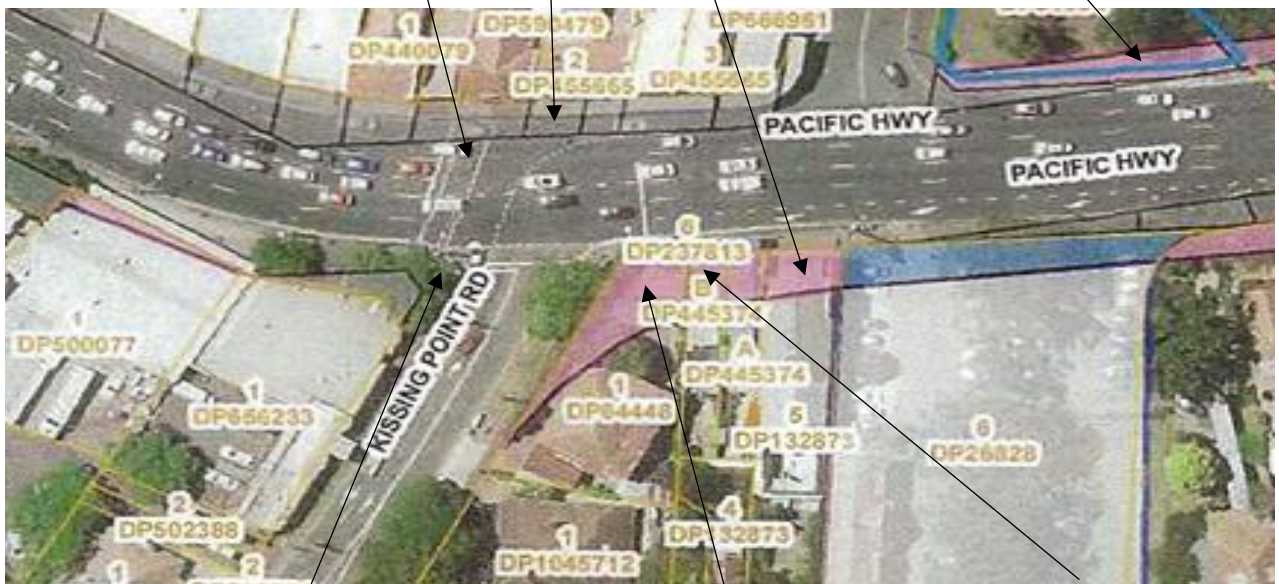
A 2017 letter to Local Minister Alister Henskens from Transport Minister Duncan Gay said Turramurra Bridge & Highway does not need widening..... Trucks and containers should use specifically built North Connex Tunnel.

Collusion between departments and between State and Local government shown by LEP2012, and again LEP2015, plus Amendments all made without local knowledge.

Local Knowledge shows: NOTE Widening of a Major Arterial Road is normally done on the inside of a curve – not as forced on the Hillview side of the Highway. (a) Road zoning (here) and (b) black box construction (here), were specially designed to lead to heritage demolition

Questions: Why does widening of the Little Village Park (pink) not continue across the road?

Local knowledge shows: Safe, wide pedestrian crossing at this place (a dangerous crossing) should be achieved by wider left turn at Kissing Point Road, and by other means.



Local Knowledge shows There is no need for this false road zoning through heritage. This SP2 zoning was stealthily gazetted by wrongly advising the Minister.

Local knowledge shows: Kissing Point Road is a dangerous road needing rapid Left exit on to the Pacific Highway. Traffic does not need to exit from Highway on to dangerous, narrow Kissing Point Road. This shows re-zoning a road through Heritage items was contrived/manipulated (hence no public exhibition).

Local knowledge shows: The real Need is for a designated Left lane to exit to Hornsby.

Hillview shows departmental cooperation works against protection.

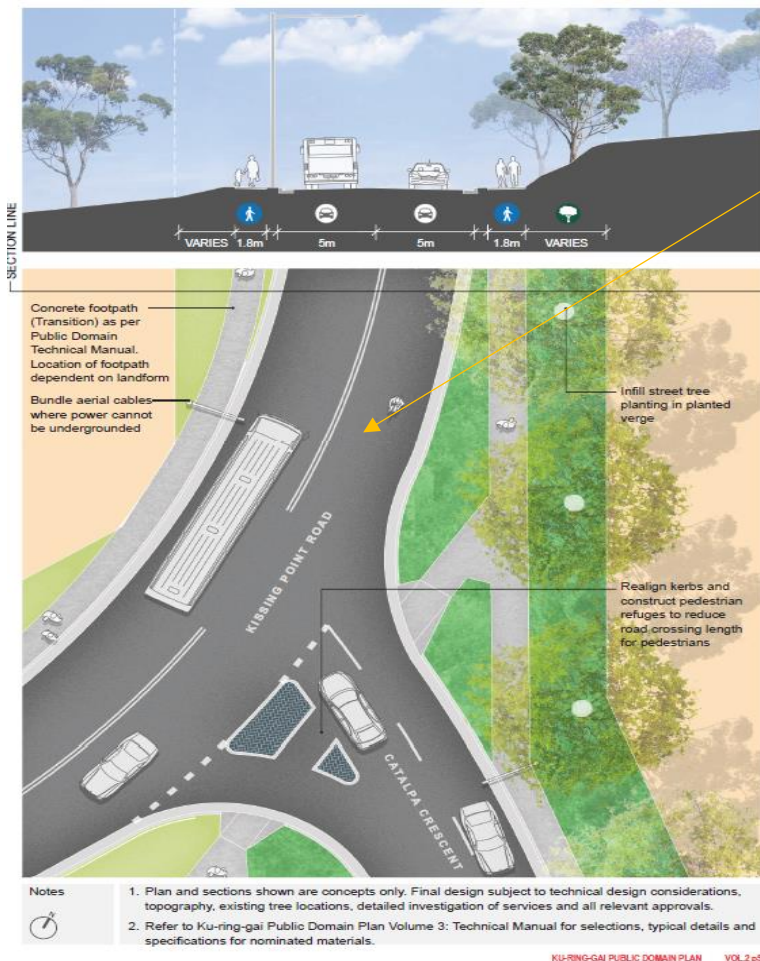
The Future is the Natural World



"Biodiversity loss is the most significant environmental problem facing Australia"
 Professor David Lindenmayer. (2007) "On Borrowed Time"

"Can we save our last best forest?"

Is Turrumurra's Public Domain Plan a Trojan Horse for a secret plan to develop Bushland?



TROJAN HORSE PLANNING

Secret department plans to develop Heritage hidden by consultant reports
 Left shows a dangerous bend connected to an unnecessary road re-zoning through 3 heritage properties on Hillview. Locals know a simple traffic calming will slow traffic down. The so-called public domain is another consultant report briefed to link critical habitat to act as "recreational facility" and "Open Space" for the Macquarie Park re-development, with no concern or lawful protection of the critically endangered ecological communities labelled as "underutilized".

FALSE PUBLIC DOMAIN PLANS TO PROGRESS LOSS OF HILLVIEW

How much money has been spent on Consultant reports since 2008/9?

These reports are a "waste of public resources" – usually briefed to achieve a particular outcome. The endgame outcome is to satisfy developer driven, flawed rezoning for development. This rezoning has not considered actions to protect Australia's last and rarest CEEC.

Locals know a simple traffic calming will slow traffic down – no need to remove even more mature protected trees.

False Public Domain Plans for hidden projects

Delay, Denial and Disregard - Why was a Protection Strategy ignored yet millions \$ were spent on consultant reports?

The Urban Forest Critical Habitat & Corridor Ecology even more mature trees on Kissing Point Road & Catalpa Crescent.

"How do we save critical landscapes?"

The Future is the Natural World



"Biodiversity loss is the most significant environmental problem facing Australia"
 Professor David Lindenmayer. (2007) "On Borrowed Time"

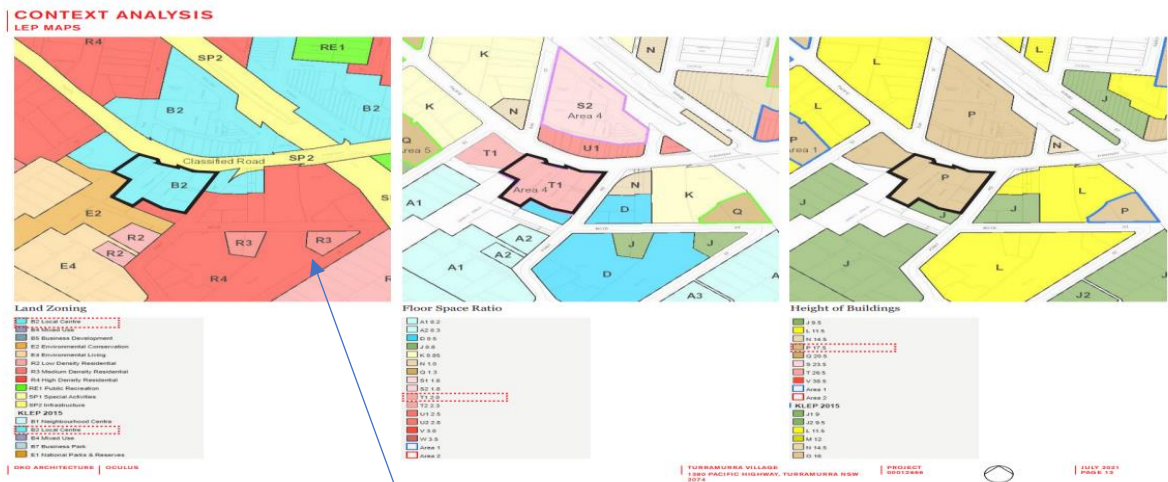
"How do we save a critical landscape?"

Hillview shows conspiracy works when Heritage is Zoned for Development.

Research shows Stop spending money on consultant reports, and restore the Town Centre, Hillview, Town Hall and Landscape Museum.... into an unusual and unique Historical town of indigenous urban forest. Turn it into a Transition Town located in Destination Ku-ring-gai.

Citizen science, critical habitat & corridor ecology for mental and physical health with a re-wilding major project to restore and repair existing corridors and gardens, streets, parks. Underground electricity wires, communal batteries and greywater plumbing, water tanks, Community Fire Units, etc

No protection in the planning & development system for the original landscape setting & siting Environment & Heritage.



The Future is the Natural World



"Biodiversity loss is the most significant environmental problem facing Australia"
Professor David Lindenmayer. (2007) "On Borrowed Time"

CHANGE WRONG PLANNING CONTROLS

- Protection zones are breached easily
- No updated concepts & controls for Biodiversity Crisis
- No knowledge of sensitivity in fly-in – fly out planning & certifiers
- CDCs allow Private Certifiers to disobey rules to protect rare urban biodiversity.
- Why is the Complying Development Certificate (CDC) allowed in rare Urban Forest?



Suppression of sensitivity has destroyed public awareness.

Lost Old Gardens and Canopy – Lost Soils and Seedbank – How Sustainable is this mass conversion?



**ABOVE SHOW LOSS OF RARE CANOPY AND HUNDREDS OF OLD GARDENS
CONVERTED TO CONCRETE BY Mc MANSIONS.**

Calculate soils & seedbank lost to Concrete.

Measure what Matters

New Valuation and Accounting FOR Nature

Calculate the Concrete poured in critical habitat.

Re-zoning in Nationally significant last environmentally sensitive areas in cities, is forcing the loss of corridor ecology at 1192 Pacific Highway.

The Secret Garden signifies nature-related financial disclosures need to employ new concepts such as Advanced Landscape Conservation (ALC), critical biological infrastructure (CBI) & baseline integrity shift (BIS).

Outdated system should consider *critical biological infrastructure (CBI)* for Nature's survival. Protection is the New Business needs *advanced landscape conservation (ALC)* to stop *baseline integrity shift (BIS)*.

Why divest of rare pockets of corridor ecology? Why not protect last soils and seedbank in last Biodiversity? "This is Council's last opportunity to divest the subject site so that it can be developed with the adjoining land". https://eservices.kmc.nsw.gov.au/Infocouncil.Web/Open/2022/05/OMC_24052022_AGN_AT_WEB.htm

Calculate the Concrete which has been poured in this Landscape – converting rare soils and seedbank. Is it corrupted process or is it ignorance of biodiversity loss to the future city to divest of rare urban corridor ecology?



More concrete in this critical habitat is not needed
Irreversible loss of corridor ecology shows need for new concepts & controls.



This is Not “surplus to Council’s requirement”

Does this recommendation understand cumulative loss of soils & seedbank to concrete ?

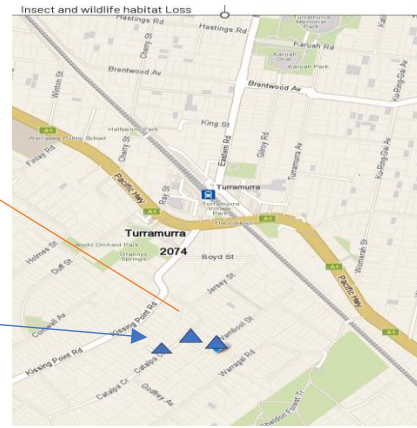
In relation to Community land that is surplus to Council's requirements, that a Planning Proposal be prepared and submitted for a Gateway Determination under section 3.34 of the Environmental Planning & Assessment Act 1979 to reclassify 1192 Pacific Highway, Pymble (Lot 8 DP 30236) from Community Land to Operational land. That the Planning Proposal/s be referred to the Ku-ring-gai Local Planning Panel in accordance with the Ministerial Direction Local Planning Panels Direction – Planning Proposals.

New concepts to stop Environmental Breakdown The Urban Forest Strategy should keep the Secret Garden as *advanced landscape conservation (ALC)*, to encourage Eco-literacy, by signage and posters. This would achieve conservation of baseline ecological integrity of soils, seedbank. Corridor ecology is essential for critical habitat to survive into the future.

This landscape is in critical habitat & corridor ecology.

Stop Removal of Protected Trees in Greenfield ESA Federal & State Government must Act

NOTHING IS PROTECTED FOR NATURE – Example of situation where increased GM authority is needed to stem irreversible loss of Environmental values. Below –The rapid removal of significant trees by Council’s own tree removal and assessment “system” ... is a system that needs investigation by State and Federal controls and regulations. A General Manager of an ESA needs elevated authority to stop urban denuding of critically endangered ecological communities of species in Australia’s last ESAs. Hidden impacts are Not understood - Hundreds of support trees for rare Sheldon Forest lost IN THE SAME LOCATION.



Rare Canopy Loss - There is currently no control over environmental loss, raising questions. DO COUNCIL RECORDS SHOWThe tree has had 2 major adjacent trees removed just months ago on either side of it.... by other “arborists” ? Many more trees in the same location have been lost in last 2-4 / 10 -12 years.

Whose responsibility is it to issue a stop to urban denuding of critically endangered ecological communities of species in Australia’s last ESAs? Should Council officers consider the sheer loss of large HABITAT trees within a 1-2 km radius of this tree, before calling on council arborists? Should a responsible response by council be to report and refer the situation to State Government before rushing to "council’s independent arborist"? Should there be at least two community appointed / selected arborists for multiple removals and for a significant tree to validate a poor initial report?

Critical habitat and corridor ecology needs new protections in Environmental Breakdown.

**For significant trees:
the process should include stops, triggers, consultation with State Government - and alternatives.**

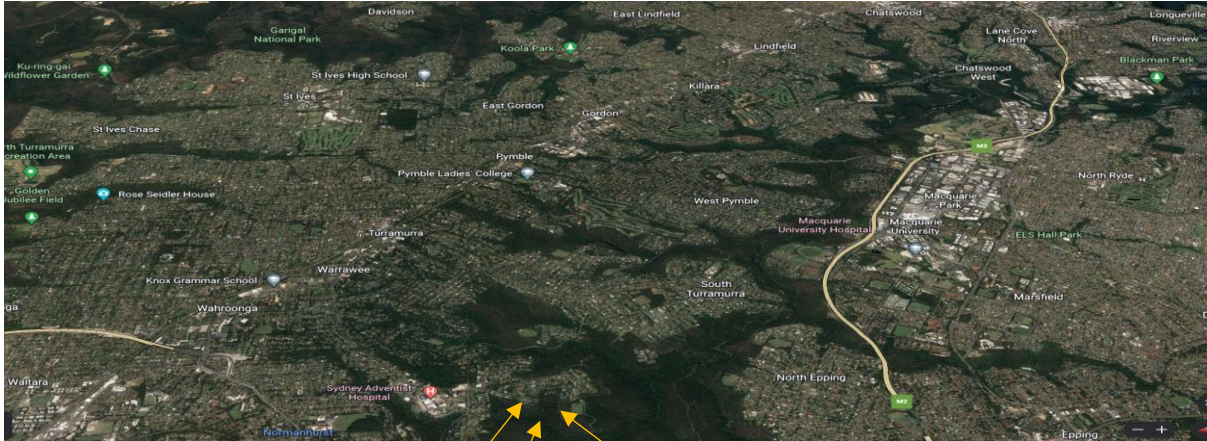
The Future is the Natural World



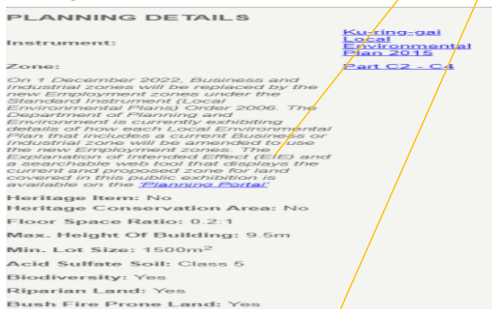
“Biodiversity loss is the most significant environmental problem facing Australia”
 Professor David Lindenmayer. (2007) “On Borrowed Time”

IS ANYTHING PROTECTED FOR NATURE? ¹³

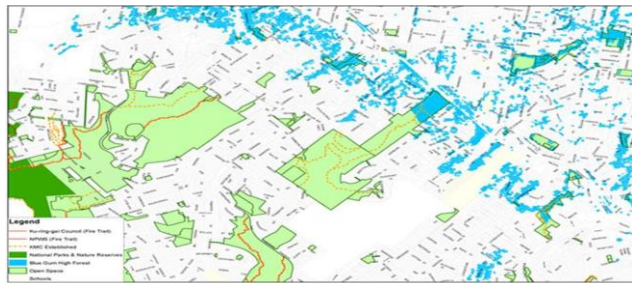
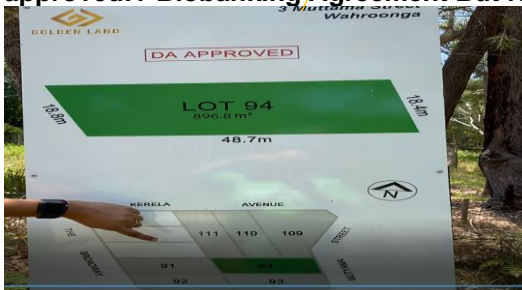
**Biodiversity is unprotected on 40% of NSW’s CROWN LAND
 LANE COVE NATIONAL PARK & KU-RING-GAI’s Rare Reserves
 A PLAYGROUND FOR MAQUARIE PARK ... ?**



Meaningless laws for Nature – Have Crown Lands Laws been changed with specific intent to dispose of lands? Has the case study ESA LGA’s total biodiversity loss been assessed? Why are environmental groups not included in the LGA’s “internal consultations”? Email



BIODIVERSITY: yes / Riparian Land: yes / Bushfire prone land: yes / Zone C2 Land? BUT DAs approved!? Biobanking Agreement But Reserves are called Open Space??



NOTHING IS PROTECTED FOR NATURE IN KU-RING-GAI ESA. ¹⁴

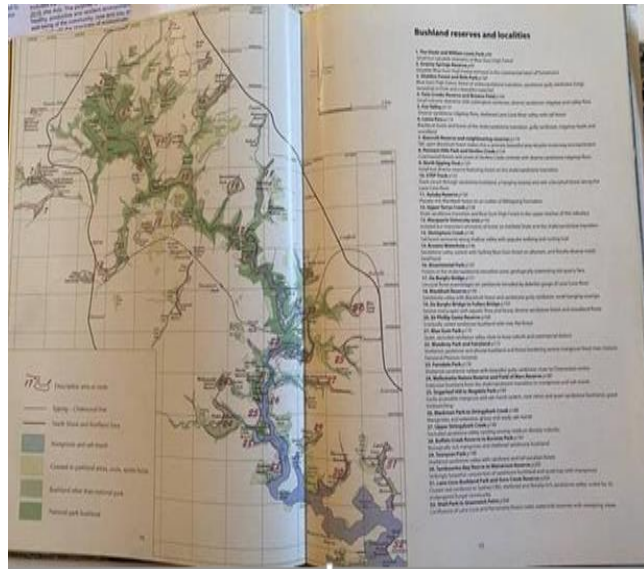
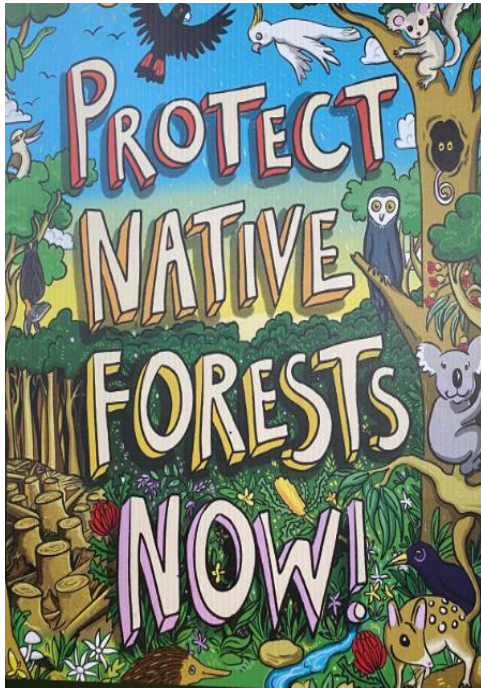
¹³ Research shows: The long-term ecological integrity of Nature is not protected in the current planning system.

¹⁴ <https://www.smh.com.au/environment/conservation/secret-plan-to-develop-bushland-20080728-gdso01.html>

What is the wider message of the proposed TRANSITION TOWN?

Nature does not understand borders, laws, and finance.

Sheldon Forest & Granny Springs Reserves are remnants of larger Native forests which were logged after 1788. The soils and seedbanks remained, regenerated and regrew but once replaced with concrete, bitumen or synthetic grass, rare urban forest remnants will never regenerate.



See

Soils, fauna and flora in "Field Guide to the Bushland of the Lane Cove Valley" by J. Martyn (STEP Inc.)

Eco-literacy gives public understanding that The Urban Forest Strategy must be a Protection Strategy to secure ecosystems and endangered Fauna & Flora for all species survival - including humans in the Future.



Maps & Laws meddled with allow rare native vegetation to be lost.

The Transition Town needs new concepts, controls and global thinking to protect rare Urban Forest for the Future. "Open Space" & "underutilized" is not science-based language for survival of EEC/CEEC Reserves which belong to Sydney and the Future.

LOSS OF RARE URBAN FOREST RESERVES MEANS LOSS OF ECOSYSTEMS.

Wildlife are Ecosystem Engineers

Protect this critical habitat & corridor ecology for future “kids and wildlife”

This rare urban Forest belongs to the future for PROTECTING critical habitat and corridor ecology will help update the planning & development system with new concepts, controls & zones – as proposed.

There are no Recovery Plans, Fauna Management Plans, and signage to make people aware of what has been lost by direct and indirect impacts of conversion to concrete.

This loss is happening in the TTT in a Secret plan which is destroying & developing rarest urban forest bushland habitat & food-source by cumulative effect.



Powerful Owl with Prey (ring-tailed possum), Leaf tailed gecko, slug & blue tongue lizard all photographed in the writer's small suburban block backing on to Sheldon Forest – how much surrounding habitat wildlife has been turned to concrete and how much wildlife lost??

The Transition must do a U-Turn from the current planning & development System – to ESSE.

CALCULATE THE CONCRETE poured in rare urban Greenfield needing protection.

Urban Forest Strategy function is to Raise Awareness, Eco-Literacy & Human-wildlife co-dependency: restore Critically Endangered Ecological Communities (CEEC).

Current planning has ignored indigenous and ecological perspectives which include protection of Urban Wildlife. ¹⁵

1. Why should Hillview Garage & Stables be used for eco-literacy & engagement for environmental groups (activities of rewilding, restoring & propagating)?
2. Why should planning controls include rare Urban Forest curtilage for Hillview Heritage Precinct?
3. Why should LGA's Nursery Review not emphasize curation, propagation of wildlife food-source?
4. Why should planning controls include re-wilding and wildlife sanctuary for protection of habitat for wildlife (in the LGA's critically endangered Urban Forest)?

Pictures taken in near-to-station Urban Forest.

Native birds seeking habitat in Sheldon Forest



But hollows and habitat are disappearing fast

Native flowers in Sheldon Forest



But soils and seed-bank are being excavated and lost irreplaceably

Our last surviving urban wildlife is being pushed out of rare urban forest by irregular un-aware planning

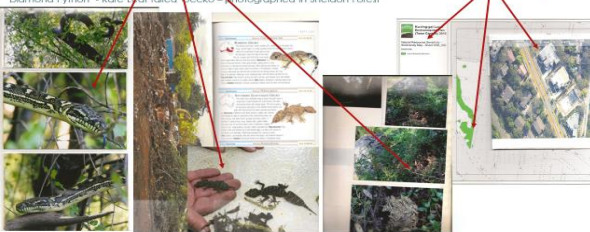


Leaf tailed gecko mother & baby adjacent to Sheldon Forest

As gardens disappear the last little birds shelter in rare urban habitat in Sheldon Forest - this little bird photographed inside house alongside Sheldon Forest

Powerful Owls nest and roost in Sheldon Forest

Rare Ground dwellers in area of high biodiversity are un-protected from excavation and concrete carpet



Diamond Python - Rare Leaf tailed gecko photographed in Sheldon Forest

A diamond python and a powerful owl play important roles in communities of species. People do not know this. Python & Powerful Owl are losing habitat & food source.

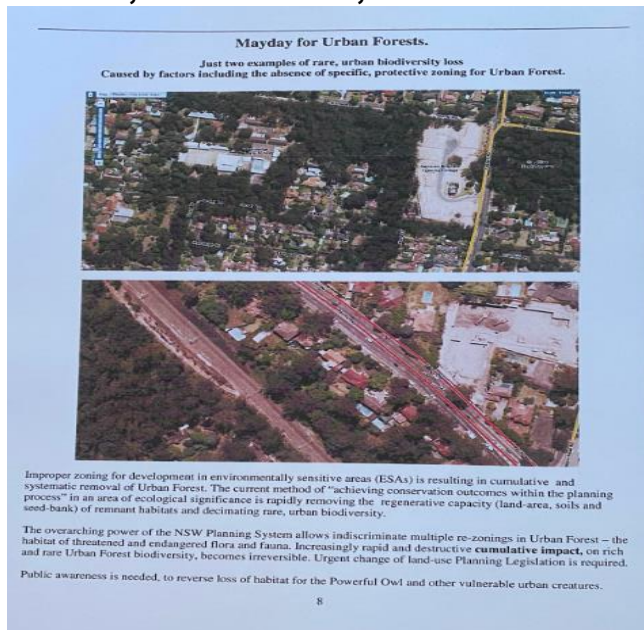
The Powerful Owl and Diamond Python are "apex species" to maintain the food-chain natural balance in Nature. The Food Chain is an ecological community needing habitat to survive, so humans can survive. Residents near a rare Urban Forest Reserve called a snake catcher. The Python was "removed" from its habitat & community. Now rats are rife. The python was a biological pest controller. We did not need chemicals and poisons harmful to other wildlife to kill the rats. The Python did this. The Powerful Owl plays the same role.



A critically endangered ecological community is a food chain in last Urban Forest.

¹⁵ Transition means going outside current frameworks provided by a socio-economic system. The GSC considers the Green Grid is not an ecological grid but a recreational grid. This is outdated and has influenced the LSPS.

Return of the Ark: National Reserve System (NRS) crucial, educational, visible.



Proposed Turrumurra Transition Town (north, south, centre: 2074)

New planning controls, concepts and zones need testing to prevent the massive loss of soils and seedbank (2010).

To reverse and correct loss in the environmentally sensitive proposed Transition Town, the Urban Forest Strategy needs to be a Protection Strategy. The error remains because the Double Significance of an environmentally sensitive area (ESA) has been overlooked - to satisfy statistical "target" planning by State Government.

In memory Will Steffan & Hayden Washington
<https://www.youtube.com/watch?v=ABZjlfhN0EQ>

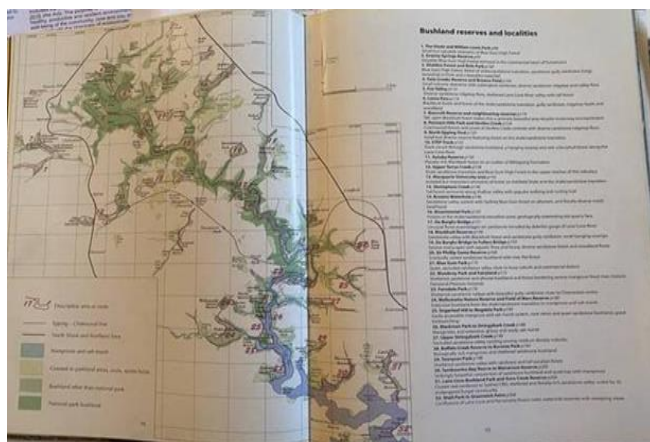
Cumulative, strategic disaster for the future city



In an ESA this is Suicide Economics.

The canopy is vanishing, windbreak has been removed, soils are drying as gardens disappear, trees are weakened, strong winds blow nests away, hollows are lost, small bird cover disappears, and local ecosystems are depleted of once abundant insect - life and pollinators. D.Clyne shows the way it was in "The Garden Jungle".

A Transition Town pilot project must correct current approaches to NSW re-zoning.



See full description of Soils, fauna and flora in "Field Guide to the Bushland of the Lane Cove Valley" by J. Martyn (STEP Inc.)

Yet, a secret plan to USE this last Urban Forest appears to be happening behind closed doors, as death by 100 cuts continues to "Greyfield" this last critical habitat and corridor ecology.

The submission to the Treasurer shows what has been suggested for this location to bring the legal and financial system together.

The National Integrity Commission needs to capture this ecological integrity before it is lost (to The Game of Mates).

**Nature does not need humans.
Humans need Nature.**

ECOSYSTEMS ON Crown & Public Land need new protection zones for Biodiversity Conservation.

The C/E 5 Zone helps in Accounting FOR Nature & Valuing Urban Forest remnants:

1. Allocate value to critical biological infrastructure (CBI) for civic security: raise community Eco-literacy in the understanding of Nature, and WHY it needs additionality, protection & restoration.
2. Engage public participation (hands -on) in breeding, rehabilitating and preventing loss of wildlife in Reserves, by providing research&Eco-literacy to future proof Sydney's rare urban biodiversity.
3. Remove the conflict between protection & use zoning, when correction is under one department.

From: E5zoneandsubzones@planning.nsw.gov.au
[\[mailto:E5zoneandsubzones@planning.nsw.gov.au\]](mailto:E5zoneandsubzones@planning.nsw.gov.au)

Sent: Tuesday, 22 May 2012 1:33 PM

To: Janet Harwood

Subject: Re: Zone E5 Environmental Protection in NSW

Dear Janet
thank you for your email.

The answer to all your questions is - yes. Proposed E5 zone can include 'manage and restore' - one may assume that all these actions are covered by the verb 'protect'.

Councils may also add their own local objectives to refer to specific conservation plan, locality etc. Mandatory prohibition of agriculture and residential accommodation has been included to absolutely 'close' the zone, unlike existing E2 zone. The intention was to make it suitable for community land in public ownership.

Should you wish to discuss further application of Standard Instrument zones on a local government level I would suggest you to contact our Regional team who is best placed to discuss specific Ku-ring-gai planning circumstances:

Sydney West Region

10 Valentine Ave, Parramatta NSW 2150
GPO Box 39, Sydney NSW 2001
Tel: 02 9860 1560

Again, thank you for your valuable input.

Kind regards

Senior Planner

NSW Department of Planning & Infrastructure | GPO Box 39 | Sydney NSW 2001

T 02 9228 6481

Subscribe to the Department's e-news at www.planning.nsw.gov.au/enews

2012 – 2023 Note: Staff advice in 2012, “that there would be no impact in Ku-ring-gai”

... shows “blindness” to chance to protect private and public land FOR NATURE.

- Development in Ku-ring-gai in just 10 years is at 80% of 2036 targets. By suppressing real protection of critical habitat for Blue Gum High Forest and Sydney Turpentine Ironbark Forest (State and Federal Laws have not up-graded protection of future security for kids and wildlife). Change & Progress denied, delayed and disregarded. Agreed in 2012 but disregarded.
- State Government says a Planning Proposal by Local Government can issue a new zone to secure core, and adjoining habitat, (by C/E5 zone).
- New Concepts The intent of the C/E5 zone in 2012 is the same as now - to protect rarest biodiversity in combination with protecting public assets for character and eco-literacy.
- The Landscape Museum & Transition Town proposed for critical habitat & corridor ecology.

Many additional values via the new Zone to deliver "Eco-literacy".

Local problems in ESA case study are emblematic of wider NSW Problems.

Absence of data is a gift to developers - Transition Town has been developed without heeding submissions, collecting data or raising Eco-Literacy. This happened in Leard Forest in 2014 – showing what is lost when “poacher & the gamekeeper” are one & the same.¹⁶

**Office of Environment and Heritage
advice that was ignored by NSW Planning**

As previously advised in relation to the Boggabri Coal proposal, the Leard State Forest has irreplaceable, ecologically unique values, including the highest quality remnant patch of grassy woodland on the heavily-cleared Liverpool Plains. Its large size, fertile soils, relatively undisturbed habitat and high diversity of fauna and flora also contribute to its exceptional ecological value. The Maules Creek EA indicates that:

- The project will impact upon approximately 36% of forest and woodland within the Leard State Forest (ie combined direct and indirect impacts of 2728ha (Table 4.3) out of 7500ha (page 4.37)). The combined impacts of mining could impact on 60% of extant forest and woodland (page 4.32).
- The project is likely to have a significant impact on the majority of threatened fauna species considered in the assessment (ie 20 out of the 23 TSC Act species assessed), impacting on up to 3373ha of habitat (combined estimated direct and indirect impacts). The project will also impact 944ha of Box-Gum Woodland EEC.

Considering the substantial impacts of the Maules Creek proposal, and the cumulative impact of mining in general within the forest and surrounds, it is not acceptable for the proponent to offer an offset that is inadequately detailed, includes a high proportion of restoration works, and has not been properly assessed or justified.

Conflict of Interest causes loss of biodiversity by suppression of sensitivity data as in Turramurra and simply ignoring the data as in Leard Forest.

**31 Significant species recorded at
Leard State Forest**

Vulnerable fauna species		Plants and Migratory sp.
Spotted Harrier	Diamond Firetail Finch	Threatened Plants <i>Pomaderris queenslandica</i> <i>Pultenaea setulosa</i> <i>Tylophora linearis</i>
Little Eagle	<u>Large-eared Pied Bat</u>	
Square-tailed Kite	Little Pied Bat	
Brown Treecreeper	Eastern Bent-wing Bat	Migratory Species Satin Flycatcher White-throated Needletail Rainbow Bee-eater
Varied Sittella	Eastern Cave Bat	
Black-necked Stork	Yellow-bellied Sheathtail Bat	
Hooded Robin	Corben's Long-eared Bat	Not recorded but suitable habitat present for Regent Honeyeater Swift Parrot Spotted-tail Quoll
Black-chinned Honeyeater	<u>Squirrel Glider</u>	
Painted Honeyeater	Koala	
Turquoise Parrot	<u>Pale-headed Snake</u>	
Little Lorikeet		
Barking Owl		
Masked Owl		
Grey-crowned Babbler		
Speckled Warbler		

Leard Forest loss shows how Key Threatening Processes (KTP) for rare species operate as in Sheldon Forest, and critical habitat .

Urban Forest Mining for conversion to concrete & Mining for coal in Leard Forest: irreversible damage to our future at different scales

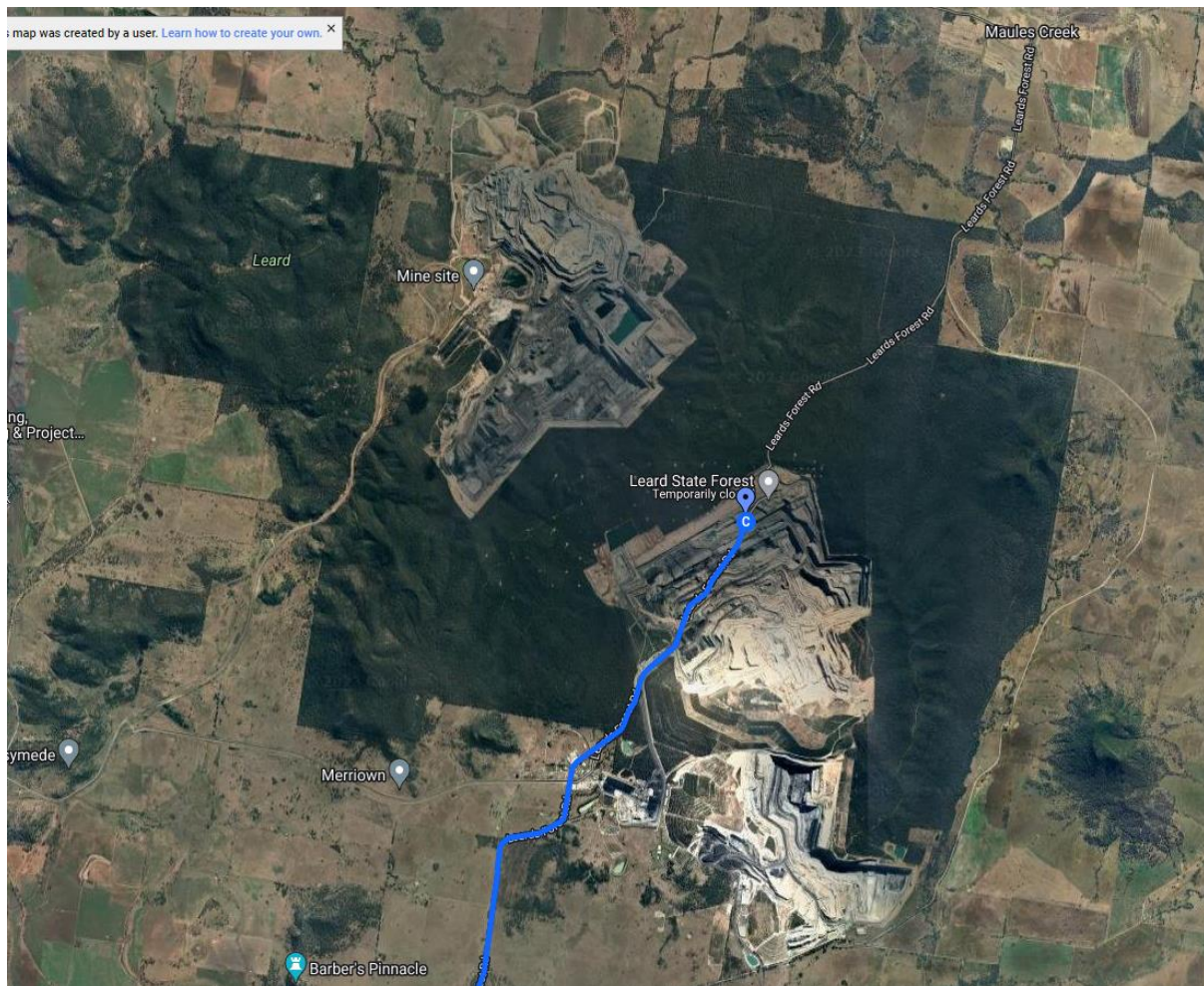
¹⁶ <https://majorprojects.planningportal.nsw.gov.au/prweb/PRRestService/mp/01/getContent?AttachRef=EXH-824%2120190812T064106.378%20GMT>

The construction, forestry and mining development industry is powerfully able to move in and out of (or exist within) the Planning & Development system as shown by

- (a) Leard State Forest - half lost to coal mine in the Biodiversity & Climate Crisis
- (b) Mt Gilead's mega development re-zoning causing Last Koala corridor loss.

Must read – Why Biodiversity Offsetting is Death for Nature is shown in Leard Forest - what has been lost when the “poacher & the gamekeeper” are one & the same.

<https://majorprojects.planningportal.nsw.gov.au/prweb/PRRestService/mp/01/getContent?AttachRef=EXH-824%2120190812T064106.378%20GMT>



Watch <https://www.youtube.com/watch?v=N369wYUTqiU>

“The issues are very serious” Phil Spark Ecologist (2014) Yet more than half the forest is gone – see the critically endangered wildlife lost.

1. Protected Areas for 30% by 2030 must be secured - development industry should not be allowed to “Bank” areas of critical habitat or mine state forest (see below).
2. Nature repair is not possible when land is re-zoned for development – tree removal precedes planning strategies and re-zoning for development is a Key Threatening Process (KTP) for endangered species.
3. Biodiversity Offsetting is out-dated for the Age of Environmental Breakdown and Planning & Development systems are known to participate in what is “insider trading” to allow the best lands for biodiversity to be lost.

Extinction of nationally significant CEECs & EECs.... How Serious are the Implications for Kids and Wildlife ?

Action from Nature Conservation Council (NCC)

21ST October 2023

“...Forestry Corporation doesn’t care about endangered wildlife. But revelations that they undertake surveys for *nocturnal* gliders during the day beggars belief.

“This shocking truth came to light after local citizen-scientists alerted the Environmental Protection Authority (EPA) to a possible breach – Forestry Corporation had only found one glider den in a forest with the highest known glider population in NSW. The EPA then undertook an investigation that found 19 dens and 89 gliders.

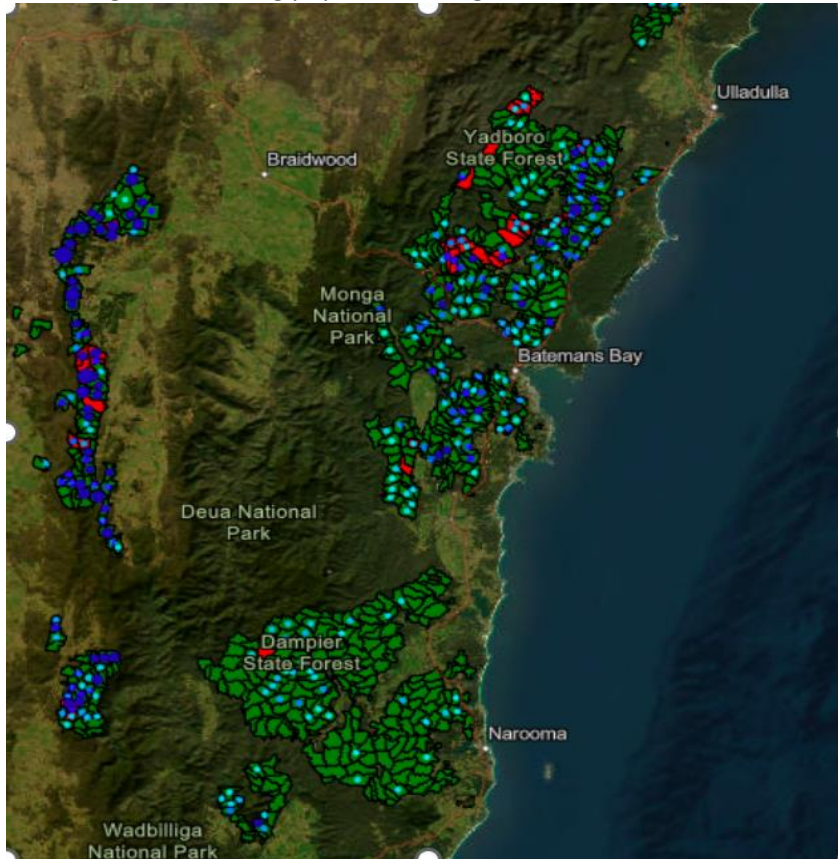


Southern Greater Glider. Image Pavel German

Southern Greater Gliders are an endangered species, and a 50 metre exclusion zone is legally required around all glider dens - the hollows this marsupial uses to nest and sleep. ¹⁷

¹⁷ <https://www.youtube.com/c/natureconservationcouncilofnswnewtown>

Our team knew this wasn't a single occurrence, and decided it was important to identify locations across NSW where gliders are at risk from logging. The results are shocking – we found Forestry Corporation is logging areas we *know* have some of the largest remaining populations of gliders in the state.



Map: Dark blue are areas with the highest proportion of gliders in NSW, and red is forest that is being logged. [Interactive map available here.](#)

We have alerted the EPA to a raft of potential breaches by Forestry Corporation, as well as to planned operations in some of the richest glider forests in NSW.

I've also been in the media, calling on the NSW Government to at a bare minimum mandate that night-time surveys be undertaken for endangered nocturnal animals like the greater gliders. [Sign the petition calling on the NSW Government to mandate that Forestry Corporation survey for nocturnal gliders at night.](#)

These forests are being destroyed – cut down and pulped for woodchips and cardboard – with no regard for the endangered wildlife that live within them.

That's why I'm so proud that this Wednesday we trained more than 40 people in our Breach Watch program – further growing our network of citizen scientists able to prevent Forestry Corporation from destroying the habitat of endangered species like the Souther Greater Glider. Denise, native forest logging is officially recognised as threatening 50 endangered and vulnerable species in NSW - including the koala, swift parrot and greater glider.

With predictions of a severe bushfire season, halting native forest logging is more urgent now than ever. [You can also support our campaign to end native forest logging for good by donating here.](#)

Brief Submission to the Biodiversity Review (leader Dr Ken Henry)

A part of the planning system is the development system (as “development assessors”), but this has made planning far more aggressive & powerful than environmental protection depts.

As a researcher into serious and irreversible implications of Biodiversity loss, causes of the impacts creating that loss, and what this means for **ecologically sustainable survival economics (ESSE)**, locally, nationally and globally, it can be stated that the Terms of Reference of the Review are extremely limited. This repeats the TOR of the Review of the TSC Act in 2014, but implications of impacts on Biodiversity are more serious today. We are in a much more parlous situation after years of shallow understanding in the previous LNP Government - of the fundamental importance of Biodiversity to Survival of all species.

The BC Act does not consider the added impacts of other legislations such as the Crown Lands Management Act. Nor does it make allowances for the fact that the Planning system (or part thereof) is in fact the development system. ESAs have been co-opted - making the situation more damaging, opaque & conflicted. All is worsened by lack of Eco-literacy, and the ease with which destruction of Nature can slip out of control is clear in the obvious damage done by the previous Government's changes to multiple legislations intersecting to impact the conservation of Biodiversity.

As unacceptable as the Biodiversity Conservation Act. The Crown Land Management Act has been changed, without Protection concerns or measures for fauna and flora habitats (biodiversity) on the 40% of Land in NSW, impacted by that Act. Since Protection is the New Business for Survival this is damaging last ESAs (especially if MNES have been left unprotected as has happened with this ESA).

These comments are made in the context of the belief that the public service and public broadcasters are now vital in the Age of Environmental Breakdown. However, when ESAs are not protected properly it is possible for the public service to co-opt the system and in brief the following points are made:

Chaos, Flaws, and lack of Eco-literacy in the Planning system. There are just 3 highly *in-effective zonings* to protect land and almost six times more than that to USE land. This is not sustainable for future biodiversity conservation. It has been made possible by a raft of chaotic measures by the last Government. These now visibly impact the Case study ESA:

1. CDCs vs DAs <https://www.mileham.com.au/blog/da-vs-cdc>
2. Tree removal chaos and damage caused by 10/50 - in the case study reports showing sensitivity, were unable and still are unable, to stem the removal of protected trees.
3. LEP can be made without reference to MNES as has happened in the case study - these show laws are not protecting and new concepts, controls and zones are needed.
4. Amendments to the LEP without public exhibition by "assumed authority" without eco-literacy, thus the term "masterplanning" does not include new concepts like *advanced landscape conservation* (ALC) and *baseline avoidance shift* (BAS) and older concepts like cumulative impact assessment, as identified by this research
5. If initial protection was not applied - all later impacts become added or cumulative - at this point after more than a decade of damage the case study is experiencing a combination of all impacts
6. Lack of rigour in target tallies - this applies to both housing and tree removal and is hugely damaging to an ESA.
7. No Protection Strategy - exacerbating all damage caused but also impacting the number of court appeals both by developers “entitled by re-zoning” for over-development in rare environments which are seen by the planning system as “underutilized” or “empty land” (terra nullius view of Australia)

8. Coercive control by the planning system to enable re-zoning to take effect – this impact worsens with delay and disregard - and with too many development "assessors" to "spot" the Planning Proposal and predetermine the DA.
9. These points either in combination or on their own more or less confirm and indicate the authority, presence and power of the development system - even to the extent of media control and threats to residents attempting protection.
10. In NSW, and perhaps across Australia, current economics and laws now ensure the cumulative loss of Nature (biodiversity).

"Council adopted" decisions are made **Either Or** – mostly making it Too late for MNES to be protected – and most likely the EPBC Act could be overruled.

It is impossible to tell if protection is possible at the DA stage. The EPBC Act does not consider rezoning an Action - and anyway the proponent can request a re-zoning review, from the DPE (note! not the Minister).

Other Issues

Language The use of simplified, vague and meaningless (for Nature) language such as Bushland, Open Space, Natural Area, Park, Public Bushland and Green Space..... instead of ecologically qualified, specific, science-based terminology for ESAs such as critically endangered ecological community of species (CEEC), has enabled suppression of sensitivity. This has allowed decision-makers and the public to make decisions which are not fully informed to protect Biodiversity.

Awareness and Eco literacy Another deep influence on the BC Act is the fact that Eco-literacy is low in the Planning system. As recently as last year the so-called Planning Department's "New Approach to Re-zoning" did not refer to or consider the twin crises of biodiversity and climate. Much of the East of NSW is highly environmentally sensitive and much of that land would potentially in future be subject to regeneration (in the Age of Environmental Breakdown, which we are now in).

Cumulative effect of all impacts on Biodiversity. In conjunction with other intersecting legislations, the total and cumulative impact on Biodiversity is now extremely serious for all of the Sydney Basin.

+++++

Koala corridor & habitat loss mirrors rare Corridor ecology & critical habitat in Urban in Ku-ring-gai.



The impact began with the last government's changes in 2011. New Labor must be assisted with Solutions to protect 30% by 2030 and Transition.

Eco-Literacy is Urgent

Poisoned trees



WE MUST TRANSITION TO ECOLOGICALLY SUSTAINABLE SURVIVAL ECONOMICS (ESSE).



31 Significant species recorded at Leard State Forest

Vulnerable fauna species		Plants and Migratory sp.
Spotted Harrier	Diamond Firetail Finch	Threatened Plants
Little Eagle		<i>Pomaderris queenslandica</i>
Square-tailed Kite	<u>Large-eared Pied Bat</u>	<i>Pultenaea setulosa</i>
Brown Treecreeper	Little Pied Bat	<i>Tylophora linearis</i>
Varied Sittella	Eastern Bent-wing Bat	
Black-necked Stork	Eastern Cave Bat	Migratory Species
Hooded Robin	Yellow-bellied Sheathtail Bat	Satin Flycatcher
Black-chinned Honeyeater	Corben's Long-eared Bat	White-throated Needletail
Painted Honeyeater		Rainbow Bee-eater
Turquoise Parrot	<u>Squirrel Glider</u>	
Little Lorikeet	Koala	Not recorded but suitable habitat present for
Barking Owl	<u>Pale-headed Snake</u>	Regent Honeyeater
Masked Owl		Swift Parrot
Grey-crowned Babbler		Spotted-tail Quoll
Speckled Warbler		

TODAY NATURE IS BEING LOST FASTER THAN EVER BEFORE

Respecting Environment leads to respecting WOMEN & WILDLIFE

THESE TREES IN CATALPA CRESCENT WERE “REMOVED” NEXT TO THE HOUSE WHERE DENSEY CLYNE WROTE THE “THE GARDEN JUNGLE” ABOUT THE RICHNESS OF INSECT LIFE IN TURRAMURRA NEAR SHELDON FOREST.



EDUCATION IS JUST THE BEGINNING ... THERE'S A WHOLE SERIES OF THINGS WHICH HAVE TO HAPPEN, AND THEY **BEGIN** WITH AWARENESS.....
NOAM CHOMSKY.

TODAY TREE REMOVAL IS CAUSING THE EXTINCTION OF INSECTS & WILDLIFE BECAUSE OF LACK OF ECOLITERACY

MEDIA IS TALKING APPLES WHEN IT SHOULD BE TALKING PEARS.

Why is this article placed on page 10?

‘Everything, everywhere, all at once’ needed to fight climate change.

We have everything we need to fix the climate crisis, but we need to do it now,

writes [Nick O’Malley](#).

Humanity has a last-ditch chance to make meaningful cuts to greenhouse gas emissions and secure a future for life on Earth, according to the [definitive report on climate change](#). The latest assessment from the United Nations’ Intergovernmental Panel on Climate Change says the climate crisis is rapidly altering Earth’s atmosphere, oceans, land and ice, causing deadly [heatwaves](#), [droughts](#), [floods](#) and [rising sea levels](#) – a child born today is likely to experience three to four times as many extreme climate events as their grandparents.

This synthesis report, the closing chapter of the IPCC’s sixth cycle of assessment, is the most comprehensive analysis of climate change across the globe and the definitive stocktake of the committee’s work over the past seven years. The report, which has 93 expert authors and draws on the work of thousands of scientists over half a decade of study and analysis, warns our actions this decade will be crucial.

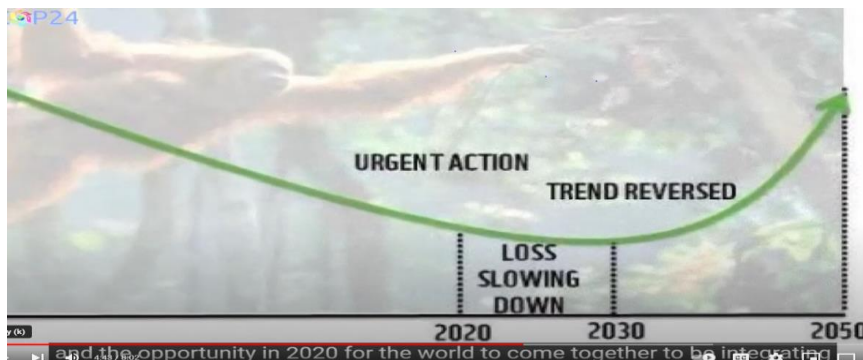
The world has already warmed by 1.1 degrees and is likely to surpass the Paris Agreement’s target of [1.5 degrees](#) by 2040, the report states, but it can still be reversed if immediate action is taken. The authors note there are still feasible and effective ways to [reduce emissions](#) and adapt to climate change with the use of [solar](#) and [wind energy, electrification](#) and [urban greening](#). They argue new oil and gas field exploration must end, and new coal-fired power stations should not be built. These actions could slow global warming within two decades and improve atmospheric pollution within a few years.

[Freedom of Information shows](#) the planning process in Turrumurra since July 2008. A planning system decided Council & Coles Land should be one site, well before the public knew what was happening in Turrumurra. ¹⁸

ENDNOTES (references links and quotes are included in the submission footnotes).

Next Steps for this research:

Reversing the trend by Transition to Ecologically Sustainable Survival Economics.



Scientists Warnings Tony Juniper, Stuart Scott & Victoria Hurth.

Part 1 <https://www.youtube.com/watch?v=loAdZPeK9A0>

Part 2 <https://www.youtube.com/watch?v=kRTpYYIfCqw>

The Future is the Natural World



“Biodiversity loss is the most significant environmental problem facing Australia”
Professor David Lindenmayer. (2007) “On Borrowed Time”

Date 1st November 2023.

Email

¹⁸ The planning system inherited after 12 years of environmental laws being weakened is now much more dangerous in the Age of Environmental Breakdown than it has ever been. <https://www.ippr.org/research/publications/age-of-environmental-breakdown> Watch also from 10 minutes State of Siege describes the planning system during Jack Munday’s Green Bans and later. <https://www.youtube.com/watch?v=6sRxsXZhKTY>