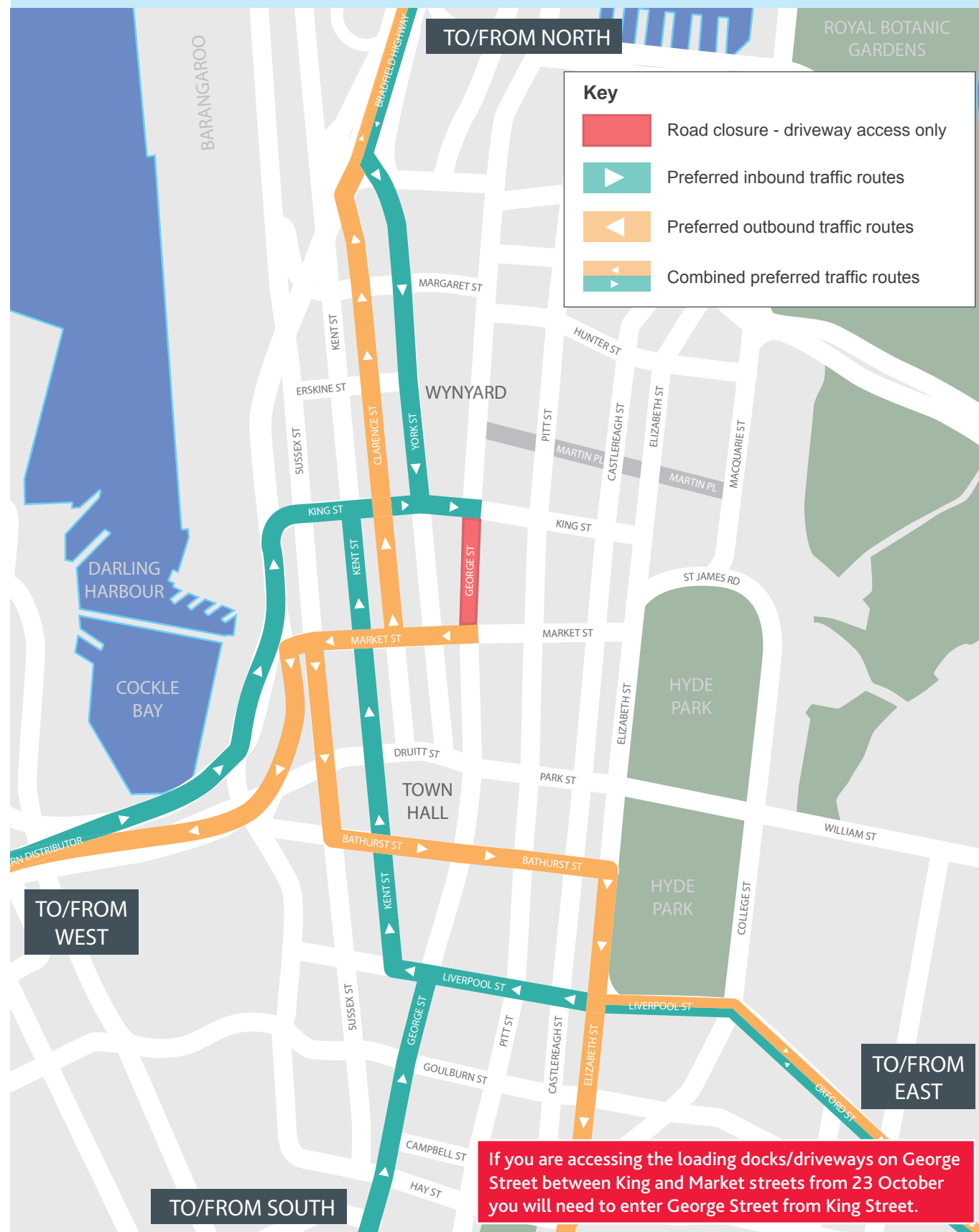


ACCESS ROUTES TO GEORGE STREET BETWEEN KING ST AND MARKET ST



PREPARING FOR TOMORROW'S SYDNEY

Sydney is changing and it will have a dramatic impact on freight and servicing activities in the CBD.

Transport for NSW is working to help drivers and businesses plan ahead to keep Sydney moving. New CBD bus routes, road network improvements and closures along George Street will impact loading zones and kerb spaces across the entire city.

This guide will help keep you informed about the changes and the best ways to maintain business activity.

FEWER LOADING ZONES – PLAN AHEAD

From 4 October buses will move off George Street onto Elizabeth, Castlereagh, Park, DrUITT, Clarence and York streets.

The construction of new priority routes for buses and operational changes on Bridge, College and Pitt streets will see changes to loading zones across the CBD. Some will be removed, others repositioned to adjacent streets and some will only be available outside peak periods.

These changes have already begun and there will be ongoing reviews of kerbside space throughout construction, so it is critical that you check kerbside signs before you leave your vehicle.

Transport for NSW is advising businesses to work together with delivery and servicing partners to plan ahead and consider your options. Alternatives may include retiming some deliveries or maintenance work, consolidating some deliveries and investigating using loading docks and other off-street loading options.

KEY TIPS

- Check road and parking signs while in the city. Traffic controllers will also be providing direction at some work sites.
- Visit the [Tomorrow's Sydney commercial drivers page](https://mysydney.nsw.gov.au/guides/commercial-drivers) (mysydney.nsw.gov.au/guides/commercial-drivers) to find the latest information about:
 - The location of loading zones and other parking options (scroll down to the map-based tool at the bottom of the page)
 - Detailed information about changes to kerbside use.
- Email Transport for NSW's CBD Freight team for advice at CBDFreight@transport.nsw.gov.au.

A new online tool (mysydney.nsw.gov.au/guides/commercial-drivers#loading) will help you find the location of loading zones and provides information about nearby parking stations (including maximum vehicle height). Loading zone data is updated weekly and available for planners via the [Transport Data Exchange \(tdx.transportnsw.info/\)](https://tdx.transportnsw.info/). Thank you to the couriers and tradespeople who helped out by taking part in user testing before the tool was launched.



ACCESS TO GEORGE STREET

George Street will be closed to general traffic between King and Market streets from 23 October for light rail construction.

Only those drivers delivering to loading docks in the block, making service calls, residents, car space owners and emergency vehicles will be given access. If you are not accessing those driveways you will not be permitted to enter this section of the street. Please follow the signs and directions from traffic controllers.

If you are not accessing those driveways you will not be permitted to enter this section of the street. Please plan ahead and follow the signs and directions from traffic controllers.

The maps on the following pages show how commercial drivers can access the block from 23 October. Please keep them for reference and share with your business contacts.

Progressive closures will take place in the weeks and months ahead. Plan ahead by visiting the Sydney light rail [construction schedule](https://www.sydneylightrail.transport.nsw.gov.au/projects/cbd-and-south-east-light-rail/construction-schedule) (www.sydneylightrail.transport.nsw.gov.au/projects/cbd-and-south-east-light-rail/construction-schedule)



FREE WORKSHOPS

The Travel Choices team will hold specific sessions to help freight and servicing businesses with the changes ahead. If you would like to attend a workshop, please email us at cbdfreight@transport.nsw.gov.au

TIPS FOR MAINTAINING BUSINESS ACTIVITY

CBD BUSINESSES

- Review the maps and other information to understand the potential impact on access to your premises.
- Ensure your delivery and service providers are aware of and have access to your building's loading dock.
- Consider which of your deliveries could be scheduled outside peak periods.
- Investigate how deliveries can be consolidated so fewer trips are needed.
- Engage with your delivery and service providers to develop an action plan that will give you more certainty and reliability of service.
- Look at working with neighbouring businesses on collaborative solutions.

COMMERCIAL DRIVERS

- Review the maps to determine which of your customers will have access changes.
- Kerbside parking conditions will change progressively – make sure you check the signs before leaving your vehicle.
- Consider loading docks as your first option. If your customer doesn't have a loading dock, work with them to explore other off-street alternatives.
- Visit the [Tomorrow's Sydney](https://mysydney.nsw.gov.au) website (mysydney.nsw.gov.au) for more tips and to find out where loading zones and parking alternatives are located.
- Use this information to plan your journey and make sure you allow additional travel time.
- Work with your customers to see whether you can schedule your jobs outside peak times.
- When you're on the road, follow the signs, adhere to speed limits and follow the instructions of traffic controllers.

TRAVEL CHOICES – ADVICE FOR CBD BUSINESSES

Transport for NSW has set up a free, dedicated resource to help CBD businesses. [Travel Choices](https://mysydney.nsw.gov.au/travelchoices) (mysydney.nsw.gov.au/travelchoices) aims to ensure businesses of all types and sizes are given help that will assist in managing the impacts of four years of changes to the way the CBD operates. They have information about how to manage staff, customer and freight travel. The key for all businesses is to plan ahead and test your plans before construction begins.

NEED MORE INFORMATION?

Enquiries about access for delivery, trade and other service vehicles
 CBD Freight and Servicing team – CBDFreight@transport.nsw.gov.au
 Light Rail Community Relations team – 1800 684 490,
SLRCommunity@acciona.com.au
 More information about support for your CBD-based business
 Travel Choices team – travelchoices@transport.nsw.gov.au

FREIGHT AND SERVICING VEHICLE ACCESS ROUTES TO GEORGE ST BETWEEN KING ST AND MARKET ST

23 October to 2 December 2015. *Note: Market to Park Street local access will change from 3 December 2015*





ALTRAC Light Rail

Local Access Plan – Area C - Fee Zone 9 -
George Street, Sydney between
Liverpool Street and Goulburn Street

SLR-D&C-MH0-000-LAP-090101

October 2016

Contents

| | | |
|-----|------------------------------------------------|----|
| 1. | Project Introduction..... | 3 |
| 1.1 | Site Introduction | 4 |
| 1.2 | Planning Conditions of Approval | 4 |
| 2. | Duration and Timing | 4 |
| 3. | Roads And Access Closures..... | 4 |
| 4. | Alternative Routes | 5 |
| 5. | Vehicle Types | 5 |
| 6. | Pedestrians and Cyclists..... | 5 |
| 7. | Waste Management | 5 |
| 8. | Special Events | 6 |
| 9. | Emergency and Incident Response | 6 |
| 9.1 | Access | 6 |
| 9.2 | Fire and Evacuation Plans | 6 |
| 10. | Access to Taxi Ranks / Loading Zones | 6 |
| 11. | The Sydney Centre Access Strategy | 6 |
| 12. | Contact Details..... | 7 |
| 13. | Our Communications | 7 |
| 14. | Monitoring..... | 7 |
| | Appendix A – Local Access Map..... | 8 |
| | Appendix B – Local Access Plan Checklist | 9 |
| | Appendix C – Stakeholder Consultation | 11 |

1. Project Introduction

The Sydney Light Rail project (SLR) is deemed as State Significant Infrastructure (SSI) and is to be delivered by the ALTRAC Light Rail Partnership (ALTRAC) with design and construction obligations in respect of the CBD and South-East Light Rail (CSELR) passed down to a design and construct joint venture (D&C JV) consisting of ACCIONA Infrastructure Australia Pty Ltd (Acciona) and Alstom Transport Australia Pty Limited (Alstom). The D&C JV will engage with various other pre-qualified design and construction sub-contractors.

The SLR project consists of:

- i. the design, construction, manufacture, testing and commissioning of the CSELR:
 - A. a new light rail system to service the Sydney CBD and south east Sydney running from Circular Quay to Central Station via George Street, and on to Kingsford and Randwick via Surry Hills and Moore Park. The CSELR includes Light Rail Vehicles (LRVs), CSELR Stops, terminus facilities, interchanges and facilities for the maintenance and stabling of LRVs;
 - b. adjustments to existing public roads, existing Utility Services and private properties that are affected by the construction of the CSELR;
- ii. operation and maintenance of the CSELR and the IWLR.

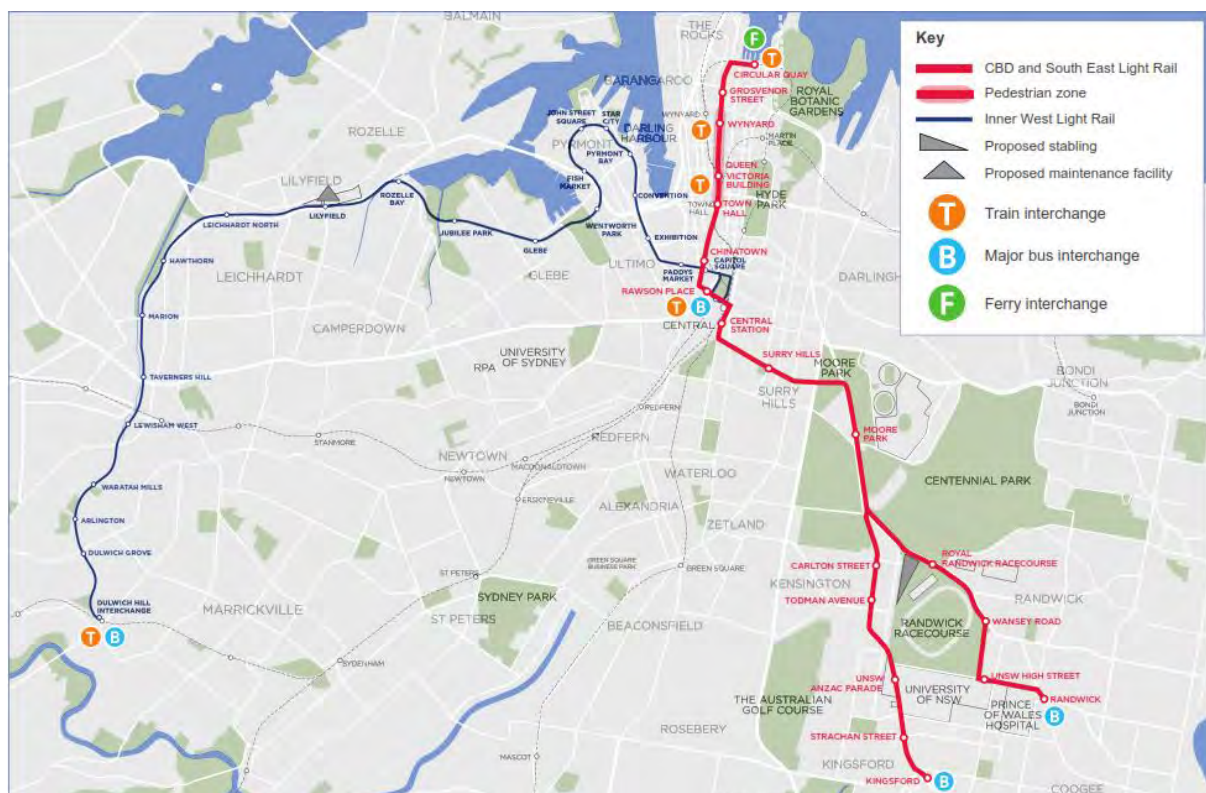


Figure 1 Sydney Light Rail Map

1.1 Site Introduction

This Local Access Plan (LAP) covers the area on George Street between Liverpool and Goulburn Streets, including the intersection of Liverpool Street and George Street. The Zone is located outside the World Square precinct. This working area is referred to as Area C - Fee Zone 9 within the Sydney Light Rail Project.

1.2 Planning Conditions of Approval

This plan has been developed in accordance with the Modified Planning Conditions of Approval for the SSI, specifically Conditions B24 and 25.

Condition B24 states:

The Proponent shall prepare local access plans for individual properties and access that will be impacted by construction and operation of the SSI. The access plans shall be developed in consultation and agreement with affected parties. The access plans shall establish:

- a) Road and access closures and provision of alternative routes*
- b) Provision for pedestrian and cyclist access*
- c) Special event strategies*
- d) Provision of servicing and delivery requirements for loading zones and waste disposal*
- e) Access periods or alternative access arrangements for businesses and landowners affected by the proposal*
- f) Strategies to maintain emergency and incident response access at all times*
- g) Potential future access strategies considering the SCCAS*
- h) Access to taxi ranks and*
- i) Heavy vehicle access to the Royal Randwick Racecourse, UNSW and the Prince of Wales Hospital campuses, considering existing and approved accesses at the date of this approval*

Condition B25 states:

The Proponent shall maintain access to all properties during construction and operation, unless otherwise agreed by the relevant property owner or occupier and reinstate any access physically affected by the SSI to at least an equivalent standard at no cost to the property owner, unless otherwise agreed with the property owner. The Proponent shall provide copies of plans to the Secretary at applicable stages of development.

This LAP relates to the section of George Street, Sydney between Liverpool Street and Goulburn Street and has been developed to ensure that access is maintained for the duration of the works as noted in the following sections.

2. Duration and Timing

This Local Access Plan will be applicable from Friday the 14 October 2016.

Changes to the road alignment within the affected section are designed to provide continued access for local stakeholders and properties. During the construction period there may be times when access is unable to be maintained, any change in access will involve further consultation with the affected parties in advance of any changes.

3. Roads And Access Closures

Two general northbound traffic lanes will be in place during Stage 1 of construction on the western side. This arrangement will alter in the second staging with the general northbound traffic lanes migrating to the eastern side. There may be times due to construction sequencing that the compounds will have to be altered, so that traffic chicanes through the block. Advance notification will be provided for this switch. During the various stages

of construction there will be detours and diversions in place as work compounds are moved inside the zone.

For Stage 1, general northbound traffic will be able to access this section of George Street via:

- Left hand turn from Goulburn Street for vehicles under 9 metres, or
- Continuation along George Street, heading North

Appendix A details the road closure and access / egress routes for local access and general traffic.

4. Alternative Routes

TfNSW and ALTRAC have developed routes for moving around the CBD and will provide information about bypass routes for people accessing destinations outside the City Centre. Latest maps are available on www.mysydney.nsw.gov.au and are updated frequently.

5. Vehicle Types

This section of George Street has stakeholders requiring servicing from various types of vehicles. These vehicles primarily access properties from the surrounding streets.

Access to the driveway at 583 George Street will be maintained.

There is a regular flow of traffic comprising light vehicles, light commercial vehicles and 8.8m rigid body trucks. The planning of the work site has taken into account this variance to be catered for in vehicle types. The general traffic lanes along George Street from Liverpool Street to Goulburn Street have been designed to accommodate emergency vehicles travelling in a northbound direction.

Kerbside access for essential building maintenance, office strip outs & fit-outs and delivery of extraordinary items will be facilitated on request, where possible.

ALTRAC has been liaising regularly with affected businesses, stakeholders and property managers within George Street between Liverpool Street to Goulburn Street to identify any other services that may be impacted by these works. The current driveway use identified is included in Appendix A.

6. Pedestrians and Cyclists

Pedestrian access will be maintained on the existing footpaths and at the current signalised intersections of Liverpool Street and Goulburn Street. Small localised reduction in the width of the existing footpath will be required throughout this section of works to a minimum of 3 metres. In order to minimise disruption to pedestrians, this will only occur in a staged and localised manner to complete construction.

Temporary localised closures of pedestrian crossings will be required throughout construction. Any closure will be offset by a temporary crossing nearby. A monitoring regime will be in place for any changes to pedestrian facilities.

Cyclists travelling through the CBD are advised to use the Kent Street cycleway. Cyclists are also permitted to travel through Zone 9 in the general northbound traffic lanes, as per all other vehicles.

7. Waste Management

Waste collection vehicles will not have access to this section of George Street to collect waste. Stakeholders will need to liaise with rubbish and recycling collection contractors to arrange collection from loading docks or an alternative kerbside location, such as Liverpool or Goulburn streets.

Kerbside access for grease trap collection trucks in George Street will be facilitated on request.

8. Special Events

The CBD Coordination Office works with the Transport Management Centre and the Department of Premier and Cabinet to ensure that special events can be catered for during these works.

9. Emergency and Incident Response

9.1 Access

Emergency Services will continue to have access to George Street through the general northbound traffic lanes. Regular meetings with the Emergency Services have and will continue to occur during the life of the project. Emergency Services will also be requested to provide feedback on the operation of the traffic lanes and any improvements that could be made to its operation.

9.2 Fire and Evacuation Plans

During the development of the Local Access Plans, ALTRAC has undertaken surveys of existing properties that have direct frontage to George Street between Liverpool Street and Goulburn Street. Tenants/property owners/property managers were requested to complete a checklist of Stakeholder Access and Requirements. This document is included in Appendix B. The completed documents were then included within a data base to allow us to review current fire and evacuation plans as they related to the closed section of George Street. The majority of nominated Assembly points are not on George Street. Those businesses having assembly points on George Street will be approached to review their fire evacuation plans.

10. Access to Taxi Ranks / Loading Zones

Taxis are permitted to travel through Zone 9 in the general northbound traffic lanes, as per all other vehicles. However, taxis will need to set down passengers outside the block closure or by using existing nearby taxi ranks on Liverpool Street and Goulburn Street. Taxis are not permitted to stop to pick up/drop off passengers in the traffic lanes in the closed section of George Street.

TfNSW is currently reviewing loading zone operations in the City Centre. Up to date information can be found on the TfNSW website www.mysydney.nsw.gov.au.

11. The Sydney Centre Access Strategy

The Sydney Centre Access Strategy detailed the implementation of the Sydney Light Rail, the changes to the bus network and operations to facilitate the light rail construction and operation and the promotion of pedestrian priority particularly in the CBD. The first stage of construction of the Sydney Light Rail was undertaken after the buses were relocated from George Street by TfNSW in October 2015. With the implementation of closures on George Street, increased pedestrian priority has become available in the closed sections of road during the construction period.

12. Contact Details

| What | How | When |
|--------------------------|--------------|----------------------------------|
| Project Information Line | 1800 684 490 | Monday to Friday 9am to 5pm |
| Project Complaint Line | 1800 775 465 | 24 hours per day 7 days per week |

13. Our Communications

| What | How | When |
|------------------------|-------------------------------------------------------------------------------------------------------|---------------------------|
| E update | Email | Monthly |
| Newsletter | Printed | Quarterly |
| Zone Briefings | Face to face meetings | Regularly and as required |
| Door Knocking | Face to face meetings | Regularly and as required |
| Notifications | Hand delivered and emailed | Changes to arrangements |
| Website | www.sydneylightrail.com.au | Constantly updated |
| Social media- Facebook | www.facebook.com/SydneyLightRailProject | regularly updated |
| Community Forums | Face to face meetings | Quarterly |
| Business Forums | Face to face meetings | Quarterly |

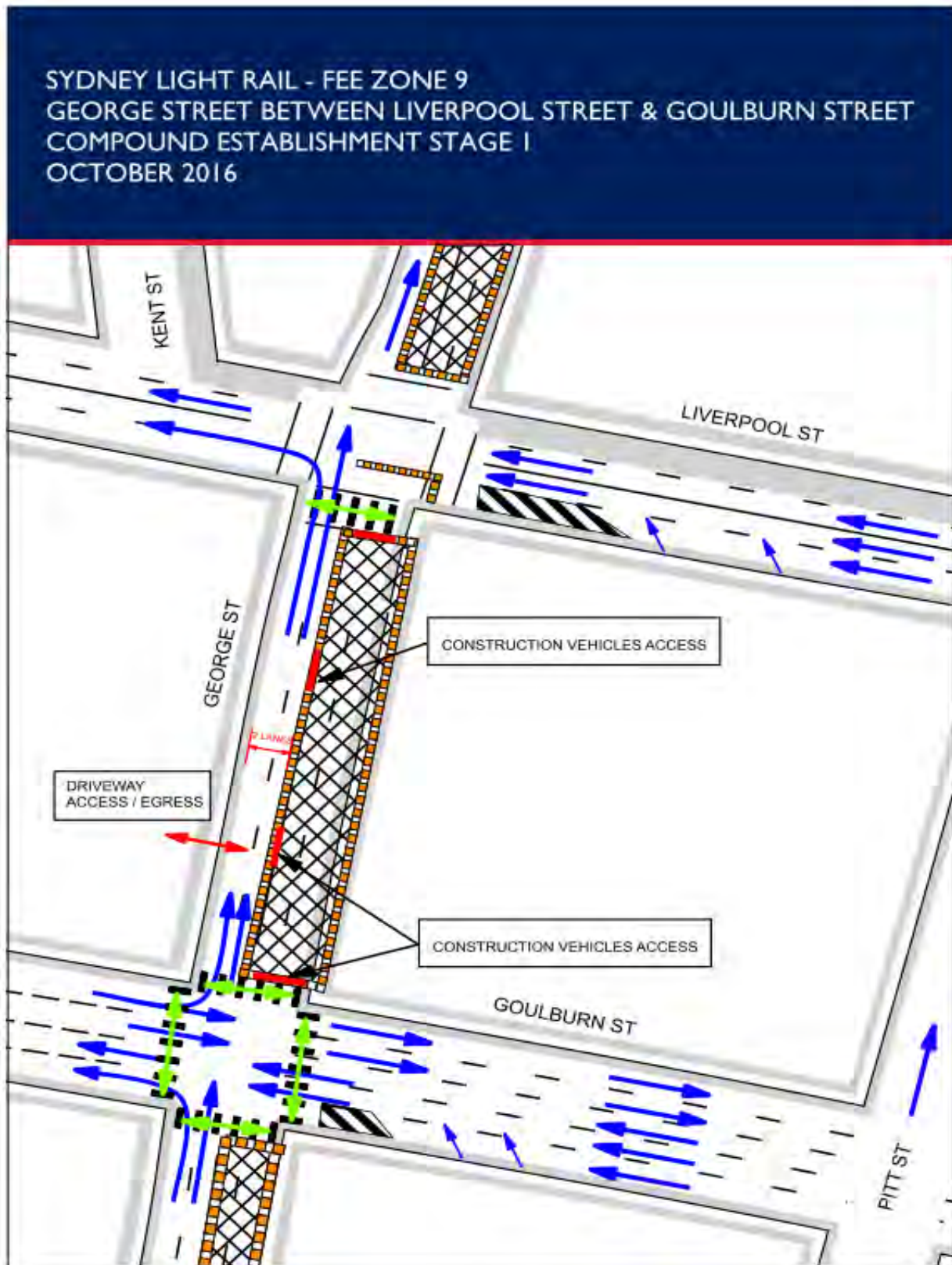
14. Monitoring

ALTRAC will monitor the implementation of the work site to ensure that access is maintained. Monitoring will occur daily.

APPENDICES

| | |
|-------------------|-----------------------------|
| APPENDIX A | Local Access Map |
| APPENDIX B | Local Access Plan Checklist |
| APPENDIX C | Stakeholder Consultation |

Appendix A – Local Access Map



Appendix B – Local Access Plan Checklist

Stakeholder access and requirements | Sydney Light Rail



| | | |
|----------------------------------|--|--|
| Business/Company Name | | |
| Address/Zone | | |
| Opening days and hours | | |
| Contact name & number | | |
| Email address | | |

| Service | Requirement | Details / Company Names |
|-----------------------------|-----------------------------------------------------------------------------------------------------------------------------------------|------------------------------------------------------------------------------|
| Delivery type | <input type="checkbox"/> Courier vans, <input type="checkbox"/> Delivery truck <input type="checkbox"/> Bicycle courier | Truck size/s: Company used: Loading zone: |
| Catering deliveries | <input type="checkbox"/> Daily, <input type="checkbox"/> Weekly, <input type="checkbox"/> Fortnightly, <input type="checkbox"/> Monthly | <input type="checkbox"/> Day, <input type="checkbox"/> Night Time frames: |
| Fruit deliveries | <input type="checkbox"/> Daily, <input type="checkbox"/> Weekly, <input type="checkbox"/> Fortnightly, <input type="checkbox"/> Monthly | <input type="checkbox"/> Day, <input type="checkbox"/> Night Time frames: |
| Newspaper deliveries | <input type="checkbox"/> Daily, <input type="checkbox"/> Weekly, <input type="checkbox"/> Fortnightly, <input type="checkbox"/> Monthly | <input type="checkbox"/> Day, <input type="checkbox"/> Night Time frames: |
| Mail deliveries | <input type="checkbox"/> Daily, <input type="checkbox"/> Weekly, <input type="checkbox"/> Fortnightly, <input type="checkbox"/> Monthly | <input type="checkbox"/> Day, <input type="checkbox"/> Night Time frames: |
| Do you have a loading dock? | <input type="checkbox"/> Yes <input type="checkbox"/> No | |
| Valet service | <input type="checkbox"/> Yes <input type="checkbox"/> No | |
| Coach service | <input type="checkbox"/> Yes <input type="checkbox"/> No | |
| Airport transfers | <input type="checkbox"/> Yes <input type="checkbox"/> No | |
| Limousine services | <input type="checkbox"/> Yes <input type="checkbox"/> No | |
| Taxi pick up/drop | <input type="checkbox"/> Yes <input type="checkbox"/> No | |
| Car park facilities | <input type="checkbox"/> Yes <input type="checkbox"/> No <input type="checkbox"/> Above ground <input type="checkbox"/> Underground | |
| Clientele | <input type="checkbox"/> By appointment <input type="checkbox"/> Walk-in | |
| Staff travel | <input type="checkbox"/> Public transport <input type="checkbox"/> Driving/parking | |

| | | |
|----------------------------------------------------------------------------|------------------------------------------------------------------------------------------------------------------------------------------------------------------------------------------------------------------------------------|------------------------------------------------------------|
| Banking | <input type="checkbox"/> Daily, <input type="checkbox"/> Weekly, <input type="checkbox"/> Fortnightly, <input type="checkbox"/> Monthly <input type="checkbox"/> Armoured pick up, <input type="checkbox"/> Pedestrian delivery | |
| Building access points | <input type="checkbox"/> Front, <input type="checkbox"/> Rear, <input type="checkbox"/> Side | |
| ATM located on premises | <input type="checkbox"/> Yes, <input type="checkbox"/> No | Provider: Service frequency: |
| Fire evacuation points | | Assembly area |
| Fire hydrants located at property (or fire wheels, check for road markers) | <input type="checkbox"/> Yes, <input type="checkbox"/> No | Location: |
| Emergency services access | | |
| Waste collection details | <input type="checkbox"/> Daily, <input type="checkbox"/> Weekly, <input type="checkbox"/> Fortnightly, <input type="checkbox"/> Monthly <input type="checkbox"/> Council, <input type="checkbox"/> Private | Private company: Bin location: Grease trap location: |
| Sanitary hygiene bin | <input type="checkbox"/> Daily, <input type="checkbox"/> Weekly, <input type="checkbox"/> Fortnightly, <input type="checkbox"/> Monthly | |
| Syringe bin collection | <input type="checkbox"/> Daily, <input type="checkbox"/> Weekly, <input type="checkbox"/> Fortnightly, <input type="checkbox"/> Monthly | |
| Window washing service | <input type="checkbox"/> Yes, <input type="checkbox"/> No | |
| Australia Post mail boxes located at front of property | <input type="checkbox"/> Yes, <input type="checkbox"/> No | |
| Any special events | <input type="checkbox"/> Yes, <input type="checkbox"/> No | Dates: Requirements: |
| Do you, your staff or customers use a language other than English? | <input type="checkbox"/> Yes, <input type="checkbox"/> No | Languages: |

Additional Notes

Appendix C – Stakeholder Consultation

| Issue | Issue Summary | ALTRAC response |
|--------------------------|---------------------------------------------------------------------------------------------------------------------------------------------------------------------------|-------------------------------------------------------------------------------------------------------------------------------------------------------------------------------------------------------------------------------------------------------------------------------------------------------------------------------------------------------------------------------------------------------------------------------------------------------------------------------------------------------------------------------------------------------------------------------------------------------------------------------------------------------------------------------------------------------------------------------------------------------------------------------|
| Traffic Management Plans | Possibility of having a right hand turn from George St (North Bound) onto Goulburn to reduce need for vehicles having to circle via Sussex and then up Goulburn St. | <p>Two general northbound traffic lanes will be in place during stage 1 of construction on the western side. A left hand turn from Goulburn Street for vehicles under 9 metres, or continuation along George Street, heading North.</p> <p>Appendix A details the road closure and access / egress routes for local access and general traffic.</p> <p>Traffic arrangements are prepared in consultation with CBD Coordination Office and the Transport Management Centre.</p> <p>A series of interactive maps that show access routes for construction zones, preferred driving routes for getting in and around the city, and for accessing destinations outside the city centre are available at www.mysydney.nsw.gov.au.</p> |
| Wayfinding Signage | Taxi rank signage for Goulburn and Liverpool St and pedestrian access thoroughfare clearly marked for World Square visitors. | <p>Updated maps for CBD Combined Taxi Ranks which details locations and operating hours of taxi ranks and set downs, secure ranks and super ranks is available at www.mysydney.nsw.gov.au.</p> <p>Road signage indicates routes for general traffic, not locations of individual businesses. There will be ongoing liaison with businesses to support their communication to customers and freight.</p> <p>Signage is currently being displayed on shade cloth in other Fee Zones informing of 'Business as usual'. A 'Business Directory' of ground level street-fronting businesses will be displayed around the construction zone; this does not include directional signage for individual businesses.</p> |
| Property access | George and Goulburn St Intersection closure – need for 14 days notification and access for delivery trucks/ vehicles to U turn on Goulburn St into the loading dock ramp. | <p>ALTRAC will continue to liaise with local stakeholders on a regular basis and ensure there are early and frequent updates as the construction progresses.</p> <p>Any changes to the Traffic Management Plan will be in consultation with CBD Coordination Office and Transport Management Centre.</p> <p>ALTRAC will provide local stakeholders with advance notice prior to any changes to the traffic arrangements.</p> <p>ALTRAC will also distribute regular community</p> |

| | | |
|-----------|-----------------------------------------------------------------------------------------------------------------------------------------------------------------------------------------------|-------------------------------------------------------------------------------------------------------------------------------------------------------------------------------------------------------------------------------------------------------------------------------------------------------------------------------------------------------------------------------------------------------------------------------------------------------------------------------------------------------------------------------------------------------------------------------------------------------------------------|
| | | <p>notifications during construction and will provide updates for any works required Out of Hours. All construction notifications and updates are also available on the project website, www.sydneylightrail.com.au</p> |
| Utilities | <p>Utility Services (Electricity, Gas, Water and Telco) shutdown notification - need a minimum of 14 days notification. Services to the building are provided via George and Goulburn St.</p> | <p>During the construction of the light rail at times ALTRAC will be required to isolate utilities mains to carry out critical utility work. Supplies to some buildings along the alignment will be affected and surrounding cross streets. ALTRAC is working with utility service providers to ensure stakeholders receive early notification about any planned outages. ALTRAC is collating information from local stakeholders about their services to help plan the work and minimise impacts (Utilities checklist). We will endeavour discuss with you the best time during that period to carry out the work.</p> |