

**INQUIRY INTO WINDSOR BRIDGE REPLACEMENT
PROJECT**

Name: Mrs June Muldoon

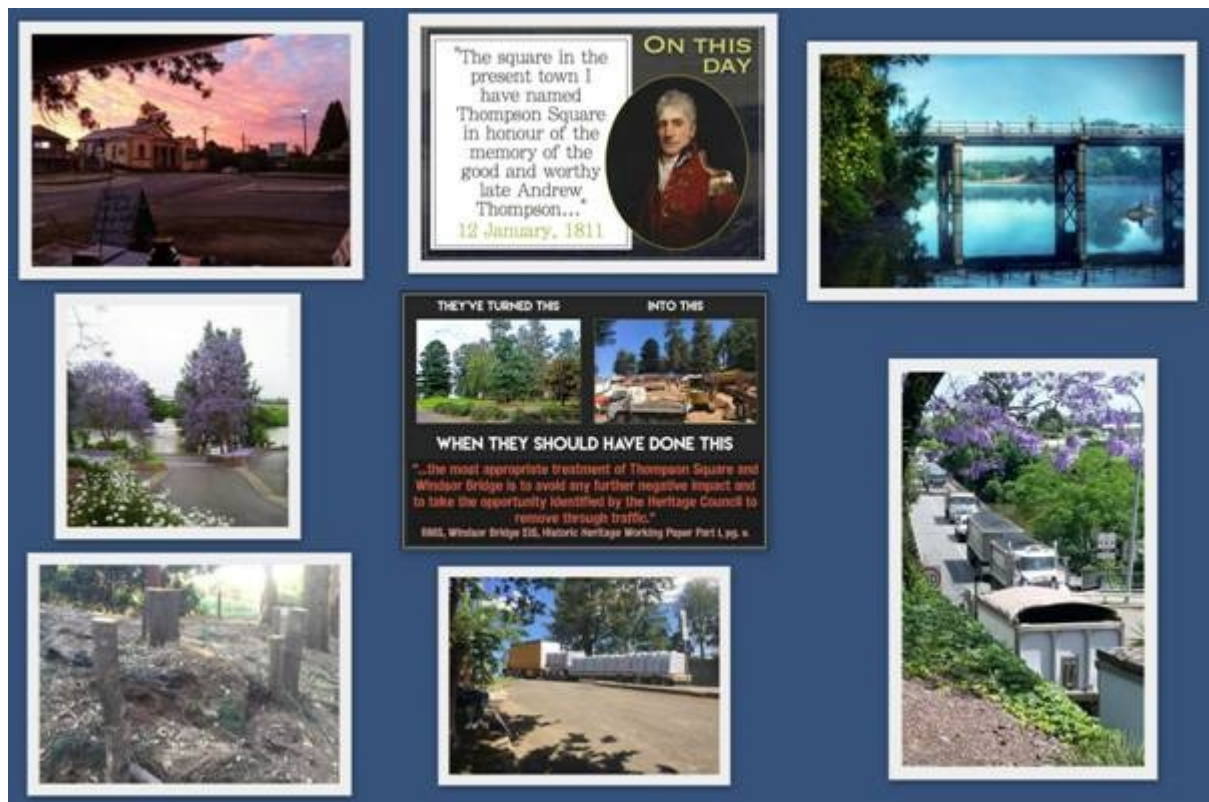
Date received: 22 January 2018

The Director,
Portfolio Committee No. 5,
Parliament House,
Macquarie Street,
Sydney NSW 2000.

Dear Director,
Inquiry into the Windsor Bridge replacement.

Please accept this submission to the Windsor Bridge Inquiry. I wish to register my opposition and objections to the Government's proposal to build a bridge 35 m downstream of the existing, historic Windsor Bridge.

Thompson Square in Windsor is older than Port Arthur in Tasmania. This Square is the oldest Square in Australia and was originally established in 1795, by Governor Macquarie. Windsor Bridge on the Hawkesbury River and the Square both have considerable historical, economic, and social significance for the people of Australia the Hawkesbury area and the many visitors that travel to see the historic buildings that still remain in this area. Without these historic buildings, Thompson Square, and the Windsor Bridge visitors would not be coming, to spend time in this beautiful area. People walk along the river and sit in Thompson Square and attend other events that are available in the Hawkesbury City.



This will soon be gone as The NSW Government and RMS have already started the process of destroying History, Heritage, and with the archaeological destruction that is at present being done by excavators that are carrying out work this must be stopped now. Large trees have already been taken out and the site looks more like a war zone not an area that people are visiting, to sit and talk in peaceful surroundings. It is now the opposite as you see what the Government has planned despite much opposition. Sydney required Windsor and the Hawkesbury to supply goods and so settlements were started and this is well documented in the history books.

In 1973, looking for land for a home, a real estate agent took me over the Windsor Bridge, this was the first time I had come to this area, love at first sight. Windsor was very peaceful town with History on every corner and the traffic that drove over this bridge was minimal but it is now out of control as each year more cars and many more trucks. Visitors flooded the area on the weekends and Windsor was a lot different than it is now. Windsor now, and over the years has so many empty shops, with the main areas of Thompson Square receiving most visitors that wander this area for the History in its existing infrastructure. Over the many years due to the increase in population the areas in the Hawkesbury infrastructure as well as Windsor have been neglected. The area remains the same, with little improvements being made, just more traffic and so many more trucks using the Bridges. I am still driving on Roads that have had very little maintenance as they were constructed for horse and cart and then tar sealed for the existing traffic, narrow just like the Windsor Bridge, yes Horse and carts this is what the bridge was designed for and to withstand the many floods that the river has experienced, these roads have now heavy trucks using them as to pass congested areas thus extensive damage is being caused, especially on the Windsor Bridge. It is not only Windsor but also North Richmond being the Bridges over the Hawkesbury River that connects this region to other areas in the Hawkesbury area and Sydney City. Very little maintenance is being done on the existing Windsor Bridge, our cars and seeing all these trucks that are now using Windsor Bridge each day the road surface is rough, on this 2 lane narrow bridge with very low sides and after all the bridge was not designed for this kind of traffic in 1874. I have witnessed wide large long Trucks having to stop on the other side of the river as they cannot drive across, as other trucks/ cars/buses quere for there turn to us this existing bridge.

"There are 3000 heavy trucks currently passing over Windsor Bridge with no weight limit, and that is expected to rise to 5000 in the near future. The RMS's own documents state noise, pollution and traffic congestion will increase.

In Thompson Square, NSW Roads and Maritime Services uncovered the 200 year old brickwork during preliminary excavation work in the square, and in January 2018 the discovery reinforces that the NSW Government's actions are environmental vandalism. Giant, mechanical excavators are crushing the remains of Australia's heritage, and incredibly precious Indigenous artefacts.

A barrel drain, Colonial remains and Aboriginal artefacts predating 1811 have been uncovered. Telford-style road, possibly the original road from Sydney to Windsor, and a Francis Greenway-designed wharf are also in the development's firing line if this project continues.

On the 16th January, 2018 one of the many Smugglers Tunnels were uncovered which the community has been over many years telling the Government about the History buried beneath the Historic Thompson Square, and also the remains on the river banks and this is Australian History that will be destroyed.

**THIS IS THE FIRST PHOTO OF THE LEGENDARY 1814
"SMUGGLER'S TUNNELS" IN THOMPSON SQUARE**



Brick barrel drain pumped out

**IT'S ABOUT TO BE DESTROYED FOR A BRIDGE
THAT WILL SEE INCREASING TRAFFIC CHAOS**

The Square and Bridge are Australia's heritage. The NSW Government if this project goes ahead will result in a modern concrete structure that will still cause traffic congestion through the historic heart of Windsor. The RMS themselves have stated that the new infrastructure will be "at capacity" when it opens (after 2 years of construction traffic chaos.)

Windsor does need a New Bridge, and like other new bridges that have and are being built in many towns in NSW, they have now a by-pass, and their current bridges still standing, and there towns are now coming back to life, locals are coming to the town centres. 50,000 people have signed a petition and all wish to see a Windsor By-pass, but the NSW Government in the meantime, appears to have stepped up its preparation for the building of these road works, ignoring the community concern and the pending Legislative Council Inquiry.



Leave Thompson Square, Leave Windsor Bridge so light traffic, cyclists, walkers, visitors, shoppers Hawkesbury People can have a town that can prosper like it once did. With all these Trucks that are using the existing bridge creating noise, pollution, damage they are driving the public out of the area, and who will be coming to view a concrete 2 way/1 way bridge alongside a once historic area with more trucks and cars going through

the Square when a By-pass could be built downstream away from Thompson Square a new Bridge with 4 Lanes. The Government also wants to pull down the Historic Windsor Bridge if this new bridge is built. Replacing a 2 lane with a 3 lane. This make no sense. Thompson Square will be destroyed. Windsor will be destroyed. A loss for Hawkesbury. The Replacement bridge = no solution. SOLUTION IS A BYPASS.

I would sincerely ask that this enquiry can halt this massive destruction and a By-pass can be built for the sake of our future generations.

Yours sincerely,

Mrs. June. M. Muldoon

22nd January, 2018.