

INQUIRY INTO CROWN LAND IN NEW SOUTH WALES

Organisation: Brunswick Heads Progress Association

Date Received: 24 July 2016



Upper House Parliamentary Inquiry into Crown land in NSW

Sam Griffith

Ph. 9230 3544

gpsc6@parliament.nsw.gov.au

Brunswick Heads Progress Assoc

PO Box 168

Brunswick Heads

brunswickheadsprogressassoc@gmail.com

Re: Submission to the inquiry regarding Foreshore Parklands and Boat Harbour controlled by Crown Lands in Brunswick Heads (July 2016)

'Brunswick Head is a natural beauty spot, unspoilt, perfect....it boasts none of the tawdry, cheap so called "improvements" of what are termed 'popular' places. So it retains its greatest charm. The great charm of Brunswick Heads is that it is different from other popular holiday resorts.'

This is a quote from *A Pearl of the Pacific, Brunswick Heads, NSW*, first published in 1922. This is still how residents and visitors feel about Brunswick Heads and none of us want to see it change!

Brunswick Heads is a traditional, nostalgic, unpretentious, small, low-key, unspoilt, family friendly seaside village with a relaxed holiday atmosphere and spectacular natural environment. The town's biggest assets are the beach, the estuary, the natural environment and our extensive simple grassy foreshore parks which hark back to simpler times allowing traditional picnicking along the river's edge. It is important to the town to maintain our nostalgic appearance and atmosphere. It is what sets us apart. It is why we live here and why tourist and local visitors come. The community of Brunswick Heads has worked hard over the past decades to maintain the unique character of our town.

There is significant Crown Land within and adjacent to our town, including three caravan parks, riverside and foreshore reserves, the Brunswick Heads Nature Reserve and the Tyagarah Nature Reserve.

If we are to maintain our low key village lifestyle it is important culturally and historically to ensure Crown Reserves are retained for public use. The residents of Brunswick Heads do not support commercial use or disposal of Crown land. We believe they should be preserved and enhanced for future generations. We support opportunities to increase Aboriginal involvement in the management of Crown land in our town.

ISSUES WITH CROWN LANDS IN BRUNSWICK HEADS

- There has been no meaningful community consultation or community input regarding major changes to our foreshore parklands, caravan parks and boat harbour.
- Other than regular mowing there has been no ongoing maintenance of any foreshore parks, their toilets or other facilities. There needs to be a major ongoing improvements in all areas of

maintenance of these parks: topdressing and returfing of grassed areas; removal of graffiti; weed removal and revegetation and toilet upkeep

- Approved major plans are not in keeping with the 'simple pleasures, low key' vision for our town.
- Economic imperatives dominate POM with little or no environmental, cultural or historic value assessment.
- Crown Lands is putting itself above the law and the process is lacking transparency.

RECENT HISTORY OF FORESHORE PARKLANDS BRUNSWICK HEADS

- Plans by Byron Shire Council (BSC) for pathways in our open grassy foreshore parklands were defeated on 3 occasions prior to 2010.
- December 2006 BSC was dismissed by Crown Lands as the Crown Reserve Trust Manager. North Coast Accommodation Trust NCAT/ North Coast Holiday Park NCHP were given responsibility
- 2010 Plans of Management POM were not approved. This included pathways.
- 23 April, 2012 meeting with stakeholders. No resident representatives.
- 2013 Draft POM prepared by North Coast Accommodation Trust NCAT/ North Coast Holiday Park NCHP
- NSW Crown Holiday Park Trust NSWCHPT came into existence in June 2013. It replaced NCAT. NCHP was now responsible to NSWCHPT.
- NSWCHPT signed off on draft POM on 13 December 2013
- Draft Plans of Management Crown Reserves in Brunswick Heads went on public exhibition from Monday 23 December 2013 to Friday 21 February 2014. Exhibition period was extended at community request.
- NCHP held two information sessions during the exhibition period on 15 January and 1 February, 2014 at which Jim Bolger, General Manager and Russell Chaplin represented NCHP.
- Brunswick Heads Progress Association letter dropped all residents of Brunswick Heads to inform them of the draft POM and invite them to attend their March meeting to be informed and have their say.
- Progress association held a public meeting on Monday 2 March at 7pm at Memorial Hall, Fingal St, Brunswick Heads. Feedback sheets and online surveys completed by around 300 residents. Data forwarded to all government stakeholders. Data tabled later in this document.
- POM was passed on 2 June, 2014 by Minister Kevin Humphries

THE PROCESS WAS FLAWED

- Only one stakeholders meeting was organised to inform the POM. Only six people present: Alison Rogers (All Abilities Playground), Kim Rosen (Brunswick Chamber of Commerce), Joy Slater (Brunswick Valley Woodchop), Glen & Any McGregor (Mc Gregor's Family Carnival), Russell Siwicki (ARL Carnival Committee Inc). There were no resident representatives invited to this meeting. The meeting took place on 23rd April, 2012 with NCHP personnel, Nev Green and Russell Chaplin also attending.
- Only after pressure from the community were two informal information sessions organised. Request for a formal meeting to inform the community was denied.

- It was left to the Progress Association to inform the community
- Response to submissions on the Draft POM for the Brunswick Heads Foreshore Public Reserves was also flawed, as the following submissions were ignored:

A petition of **156 signatures**

4.1 Petitions

Two petitions were received.

Foreshore Protection Group.

The petition comprised 156 signatures from people who support the retention and maintenance of our grassed parklands and do not support the construction of NCHP's proposed timber deck on the riverbank in Banner Park or the proposed 2m wide all weather pathways through our public parklands. It also include 151 signatures from people who support Byron Shire Council's proposed Caravan Park Boundaries detailed in August 2012 Licence agreements and do not support the proposed boundaries in NCHP draft POMs.

These matters are addressed in the submissions assessment.

A petition of **2095 signatures** with over 700 individual comments

Mr Jim Dodd (Change.org petition)

The petition had 2095 supporters as at 25 February 2014. The petition included the following objections

We strongly object to and reject NSWCHPT and NCHP's plans because they:

- 1. Refuse to re-instate the foreshore walkway along Simpson's Creek adjoining the Terrace caravan park. Management has allowed this to be blocked/barricaded by caravans and 12 moveable dwellings that could all be relocated within the park. Instead they want to take the whole length of the foreshore into the caravan park and fence it off for the exclusive use of their clientele.*
- 2. Plan to expand caravan park activities onto the foreshore land at Ferry Reserve and restrict access to the public boat ramp.*
- 3. Refuse to get off illegally occupied land at Massy Greene caravan park, zoned for Maritime Purposes for use by the wider community. This is prime foreshore land adjoining the Brunswick Boat Harbour.*
- 4. Refuse to develop their caravan parks within the boundaries set by our local Council. Those boundaries have been set to keep the foreshores in the public interest and not for the exclusive use of caravan park clientele.*

These matters are addressed in the submissions assessment.

35 (the highest number of submissions) were for **no boardwalk and deck in Banner park**

29 (second highest number of submissions) submissions wanting **no carpark in Torakina Reserve**

21 submissions to **keep Torakina as natural as possible**

18 submissions wanting **no pathways in reserves**

18 submissions **no lighting or security cameras**

13 submissions on **maintenance and presentation of foreshore reserves**

12 submissions to **maintain public access to and along the foreshores**

7 submissions for **no upgrades of foreshore public reserves**

To date the collation and reporting on responses to the exhibited POM has not been accepted by the community. It is strongly argued that the methodology used had a predetermined outcome. That outcome ignored the priority ranking of issues raised in relation to the parklands. The approved POM for the foreshore parklands bear no relationship with what the community wants.

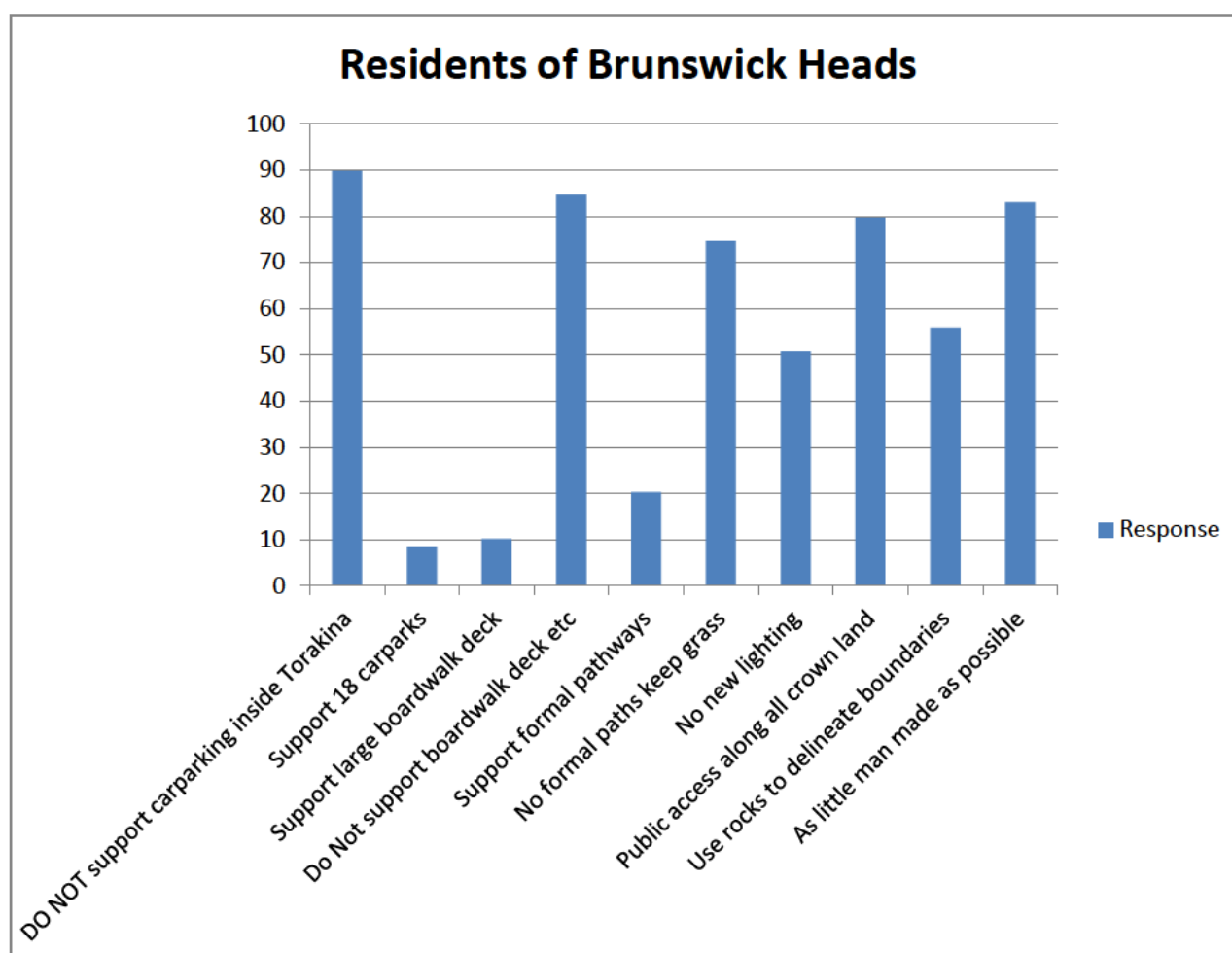
WHOLE TOWN LETTERDROP AND TOWN MEETINGS

In February 2015, the Brunswick Heads Progress Association (the longest running residents group in NSW) letter dropped all residents in Brunswick Heads, with a detailed, two page flyer showing proposed State Government approved changes for our unique open, grassed foreshore parklands. A town meeting was held on the 2 March, 2015 to explain these proposed changes and to get community feedback.

Between 300 and 400 people attended the meeting. 156 residents and 45 non residents completed a total of 201 MEETING FEEDBACK SHEETS at the end of the meeting. This number represents over 10% of the population of Brunswick Heads and is therefore statistically significant. An ONLINE RESIDENT QUESTIONNAIRE that could be filled in after the meeting produced similar results. The Trust and the Minister have chosen to ignore this record of community opinion!

ISSUES	Sample size 201	YES	NO	UNDECIDED
CONSULTATION WITH RESIDENTS ADEQUATE	RESIDENTS (156)	9%	85%	6%
	NON RESIDENTS (45)	0%	93%	7%
SUPPORT 18 SPACE CARPARK INSIDE TORAKINA	RESIDENTS	3%	94%	3%
	NON RESIDENTS	4%	91%	5%
SUPPORT DECK AND BOARDWALK BANNER PARK	RESIDENTS	4%	92%	4%
	NON RESIDENTS	0%	87%	13%
SUPPORT NETWORK OF PATHWAYS	RESIDENTS	13%	67%	20%
	NON RESIDENTS	15%	76%	9%
SUPPORT NEW LIGHTING	RESIDENTS	18%	67%	15%
	NON RESIDENTS	15%	67%	18%

Results of online Residents Questionnaire



MOTIONS PASSED AT TOWN MEETING ATTENDED BY OVER 300 RESIDENTS

1. This meeting of the Brunswick Heads community considers the plans of management for the Crown foreshore reserves and holiday parks at Brunswick Heads flawed as preparation did not follow due process in its consultation with the key stakeholders, the residents of Brunswick Heads.
2. This meeting of the Brunswick Heads community calls on New South Wales Crown Holiday Park Trust to suspend all works under the Plans of Management until the residents' views have been acknowledged and reflected in the proposed works.
3. This meeting of the Brunswick Heads community calls on the Minister to suspend the Plans of Management pending a review and investigation into the process of their preparation.

APPROVED PLANS REJECTED BY THE COMMUNITY

TORAKINA RESERVE – A **new access road, 18 space carpark and pedestrian pathway** are planned for **INSIDE** Torakina open reserve, near current BBQs and toilet facilities.



This carpark would take over half of the most popular picnic area in Brunswick Heads as is evident in the aerial photo above. Since the POM was approved the only BBQ in this park has been removed and not replaced. Also the toilet block has not been improved and is an embarrassment to the town.

The carpark would impact the visual amenity of this most natural park in the heart of Brunswick Heads. The carpark would only provide an extra 5 car parks, as current parking will be lost in its construction. Better parking options are available without destroying this most precious of parks. The community has rejected built structures in this area in the past as it is highly valued as a natural, quiet, passive recreation space for families. Generations of families have celebrated family milestones in this park giving it great cultural and heritage significance.

See excerpt from letter sent to the Association by a

regarding this proposed car park.

My names [redacted], I lived in brunswick for 15 years and yes I'm only a kid but my opinion still counts and I can guarantee you that more then half the town doesn't want a parking lot there! Ever since I was a baby I've always had my birthdays there it's were I made memories with my family and the whole comunity you may think it's best but no! that's where kids in brunswick like to be it's a place to chill without having to walk the streets all the time and you guys getting rid of it is gunna make all the kids and family's just wonder the streets !we don't need that carpark there!!!! Please consider not putting one there brunswick is only a small town and I can tell you it would mean a lot to the town if we could keep that area ! Thank you

Residents do not support additional lighting or security cameras in this park. Lighting would have negative impacts on nocturnal animals and endangered plant species in the area. The natural character in this area must be maintained. The association supports the refit of the existing architecturally designed toilet block at Torakina. Additional BBQ's are also supported.

Many residents have asked the question "Is the state government doing this to provide car parking for future commercial development in the park?"



BANNER PARK (opposite the pub) – A **new huge 400 sq metre raised timber deck** including picnic tables and **fencing** along the river's edge. **Six existing Norfolk pines will be incorporated into the deck** with planters. Steps to the river will be replaced. A new and **larger playground** is planned and the large gum tree will be removed.



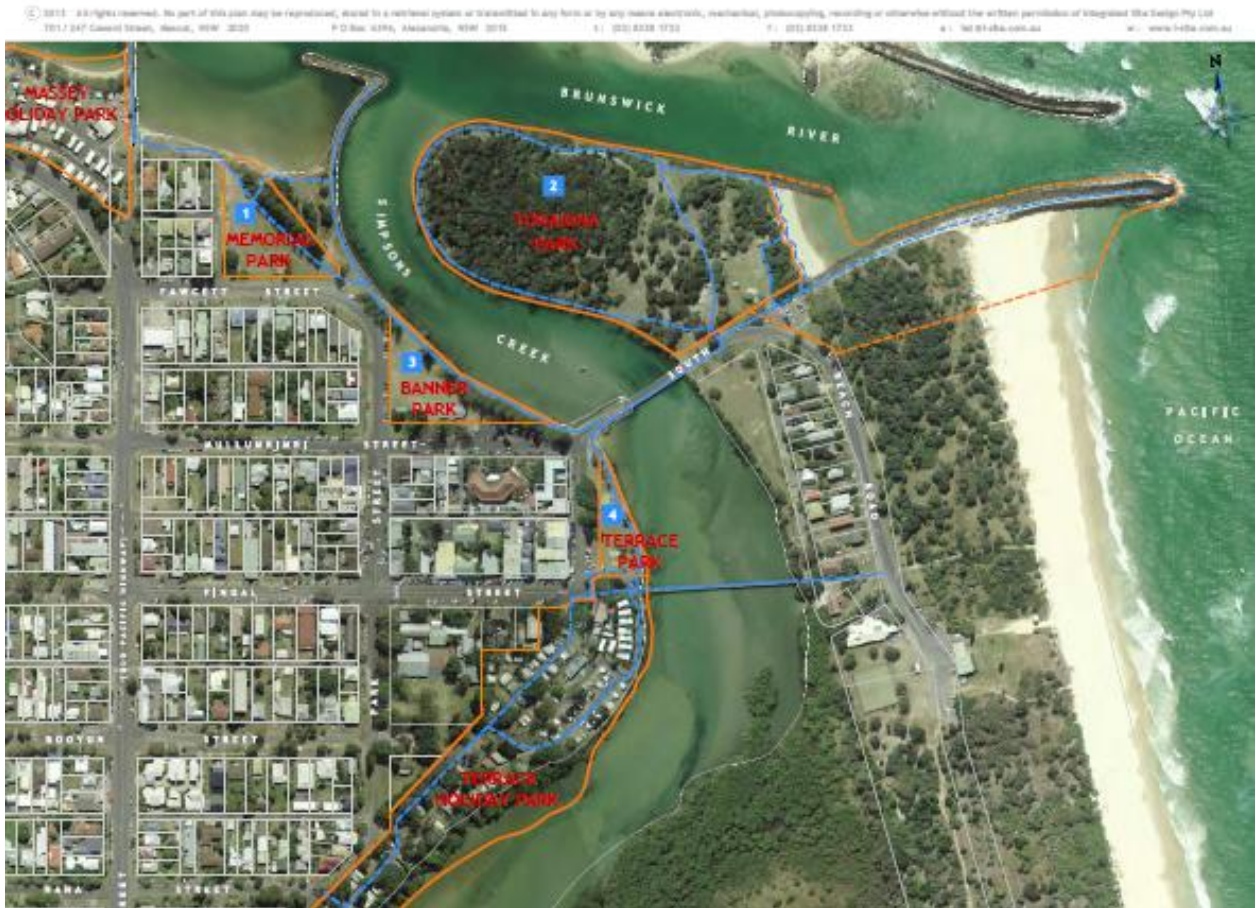
The bulk and scale of this huge structure is completely out of character for Brunswick Heads. The reasons given for this over development were to improve access and protect the historic Norfolk pines. There is no doubt this area is one of the best used areas in Brunswick Heads because of the playground, steps into the river for swimming and picnics along the river edge and inside the old house shed. This simple grassy foreshore park, if maintained, offers

access to all to the river's edge. Maintenance of this area has been nonexistent, except for cracker dust being spread which inhibits the growth of the grass. The soft fall under the playground has never been contained and has spread over a large area contributing to park erosion. There needs to be major ongoing improvements in all areas of maintenance of this park. Topdressing and returfing of grassed areas is urgently needed after a decade of neglect. Litter is becoming more of a problem in this park as more and more people discover our town. The community overwhelmingly rejected any fencing along the river bank when it was put forward by Byron Shire Council in the past. Considering the lack of maintenance in our parks, the community have real concerns around who would maintenance such a big structure. Other concerns include rubbish, vermin, the impact of lighting on the marine environment, after hours partying from the hotel and the impact of the build on the health of our historic Norfolk pines. This huge structure would have a negative impact of on the visual amenity, connectivity and flow in our foreshore parklands. Rock walls in this area of the park show subsidence and need urgent attention. The roots of the Norfolk pines should be covered with soil regularly to protect them, and missing Norfolk's should be replaced. The playground should remain at its present size so as not to take over the area. The present large gum tree must be properly tended and maintained. If it has to be removed for safety reasons the NCHP must replace it with an advanced equivalent native tree, on the same site, and maintain it properly. The 10m setback from riverbank should apply to all built structures including this huge deck. No formal pathways or additional lighting is needed just maintain grassed areas. Any existing lighting should be shielded from the river.

Once again we ask the question. Is the State government looking at using this deck for commercial purposes in the future?

PATHWAYS LIGHTING AND PARK AESTHETICS – A **new network of pathways** are planned for **all** the foreshore parklands. **There are no specifications in the plan, for the type of surface to be used in paths and/or the style and placement of any lighting.**





There is also a new network of compressed hailstone paths planned for our open grassed parks. These paths are not necessary and will stop traditional picnicking all along the river bank. The community has rejected pathways, in our open grassed foreshore, on a number of occasions in the past, yet they have been approved in this new POM. Residents want to retain our simple grassed foreshore parks that give Brunswick Heads its unique nostalgic feel. The natural state of our foreshore parklands underpins the 'simple pleasures' tourist and marketing strategy. The foreshore parks surrounding the CBD area act as a draw card for the commercial block and therefore contribute to economic prosperity of the town and its businesses. If well maintained they allow access for all. Other than mowing, maintenance of these foreshore parks has been zilch! The cost and maintenance of lighting and its impact on the marine ecology are of concern as well as the effect on our beautiful night sky.

TOILET AND PARK MAINTENANCE





Since the POM was approved North Coast Holiday Parks have demolished 2 large toilet blocks in their caravan parks in Brunswick Heads (Terrace and Ferry) and replaced them with brand new toilet blocks. Meanwhile not a cent has been spent on our public toilets even though the community has been complaining for years! This is a blatant example of commercial interest coming before public interest.

The level of neglect in this area is staggering. No maintenance of toilets in over 20 years. The same can be said for the general maintenance of all foreshore parklands controlled by Crown Lands. Other than mowing and a bit of cracker dust, maintenance is nonexistent. Rock walls are subsiding, surfaces are denuded and uneven and litter is becoming more of a problem. The photos above show the embarrassing state of our parks right in the centre of town. How can Crown Lands be so neglectful of our parks and get away with it for so long? There seems to be no accountability. All grassed surfaces need immediate attention: aeration of the soil, topdressing, surfaces evened out and all dips and holes filled, soft fall in the playground should be contained to stop erosion and the roots of all the Norfolk pines need to be covered with soil to protect them.

Crown Lands needs to consult with the community regarding reducing unnecessary and repetitive signage and choosing a range of park furniture, shelters, BBQ's, and bubbler styles to be used consistently throughout our town. Feedback shows support for simple wooden furniture by residents.

SOUTHERN BREAKWALL/ DREDGING/BOAT HARBOUR MASTER PLAN

COMMUNITY CONSULTATION

The Public meeting organised by the Brunswick Heads Progress Association on 3 August 2015 was attended by over 100 residents and stakeholders. The aim of the meeting was to inform residents of Dept of Lands plans for Crown Land at the Boat Harbour, dredging the river and the Southern Breakwall in Brunswick Heads.

Issues raised and discussed regarding the choice of surface for the crest of the Southern Breakwall in Brunswick Heads:

- **Disability access**

Disability access was supported by the meeting. Comment from wheelchair users that asphalt becomes a difficult surface to use once it breaks down. They have had plenty of practice in Brunswick Heads with the appalling state of roads in the village. Pothole central! Wheelchair participant finally decided that compressed hailstone would be best as it allowed for easy maintenance. As a resident of Bayside he regularly uses his wheelchair on the compressed pathway from the bowling club into town.

- **Barefoot walking-hot surface**

Many children and surfers regularly walk the Breakwall barefooted. Will the asphalt be too hot? Smaller path strip down the middle of the wall was suggested.

- **Aesthetic-How it looks**

There was concern that the look of asphalt would change the feel and look of this beautiful natural setting. Asphalt butting up to a sandy beach, incongruous.

- **Undercutting**

This is a major issue on the wall. Will undercutting not be visible until it's too late, because of the hard surface? What damage will undercutting do to the asphalt surface? Will edges break away? Will asphalt end up in the river?

- **Breaching of wall in storm events**

Waves breaking over a breakwall in major weather event can lift concrete blocks. What will it do to asphalt?

- **Sand build up**

Sand build up is an issue where the wall meets the beach. If this area is not maintained wheel chair access will not be possible. Who will maintain it and how often?

- **Ongoing maintenance**

This is of major concern as not a lot of maintenance goes on in Brunswick Heads! Just look at our open foreshore parklands. Is the asphalt driven by a set and forget strategy

- **No consultation with local indigenous community**

- **No consultation with residents**

Feedback sheet put out after the commencement of work is not good enough.

DREDGING

These issues were raised at the meeting.

Mayor Simon Richardson addressed the meeting about the proposed dredging of the boat harbour:

- He read a text message from elected MLA representative Tamara Smith and her objection to the lack of community consultation on the issues to be addressed.
- He had read the review of environmental factors

- No DA is required but Byron Shire Council was invited to make submission which it did
- Cape Byron Marine Park's submission was over ruled by decision makers. The Marine Park's position is that the greater public safety issue hasn't been proven.
- He is relying on experts in the environmental field to give him information about the environmental impacts of what is proposed
- Expressed disgust about the lack of community consultation
- Planning Perimeters for the proposal is under SEPP (Infrastructure) 2007 which excludes a DA. The project will be determined by Crown Lands but Part 5 of the SEPP requires consideration of the environmental factors
- The plan of what is proposed was displayed and the map showing dredging, dewatering and beach nourishment (New Brighton beach) was referenced
- Question was raised as to the existence of a plan for the removal of the toxin sands at the slipway. Whilst the intent is to remove the toxins he doesn't know if a plan exists for its execution.
- Plans were to be brought to the community late July early August. This doesn't appear to have happened.
- Reasons given for dredging by Crown Lands is the need safe navigation and tourism. But the alleged 'need' hasn't been substantiated which questions how 'unsafe' is it now?
- He would like more information to explain the reasons for dredging including ongoing maintenance.
- Trawler fleet has decreased in numbers and silting of the river has increased
- Would appear that the principal push for dredging is coming from Marine Rescue
- Aboriginal issues - in the official documents there is reference to ongoing consultation but there is no evidence of engagement with local indigenous community
- The integrity of the document and the integrity of the process was questioned
- Community engagement strategy that is obligatory hasn't happened
- Status of sea grasses, sub-tidal habitats - there is no information about the impact on either and in similar vein on turtle species.
- Notice to Mariners has not occurred
- Impact on nesting endangered bird species is possibly highly negative due to timing of dredging
- No cost benefit analysis presented.
- Although Council staff were at the meeting with Crown Lands it is not the responsibility of BSC to let the community know what is happening.
- Have all the REF requirements been met?
- How long will this 'maintenance' work last before it has to be done again?

MOTIONS PASSED AT THE MEETING

The Brunswick Heads community is outraged by the continued lack of consultation with residents by the Dept of Lands and Water regarding plans for Crown Lands and waterways in Brunswick Heads.

We demand:

1. An immediate suspension of all work on the crest of the southern break wall until such times as there is agreement on the material for the walkway.
2. That any future plans for Crown Lands in Brunswick Heads includes consultation with the residents of this community, including indigenous representatives during all stages of planning.

DATA FROM MEETING FEEDBACK SHEET

Were you aware of Dept of Lands plans for the:

Southern Breakwall: YES - 28% NO - 72%

Boat harbour: YES - 37% NO - 63% (Many Boat Harbour stakeholders attending)

Dredging of the river: YES - 46% NO - 54% (Recent media coverage)

Do you feel public consultation was adequate? YES - 8% NO - 92%

SOUTHERN BREAKWALL

Do you support the repair of the rock wall?

YES - 84% NO - 14% UNDECIDED - 2%

Do you support the planned asphaltting of the breakwall crest?

YES - 25% NO - 75%

If NO what surface do you support for the breakwall crest?

Concrete - 23% **Compressed hailstones - 37%**

Compacted roadbase-25% Other-15% (path tiles, pebble crete, recycled rubber, strip of sand coloured concrete with hailstone, timber)

What type of surface do you support?

NATURAL - 63% HARD - 31% BOTH - 4% UNDECIDED - 2%

DREDGING OF THE RIVER

Do you support BSC request to defer any dredging to allow further consultation? YES - 65% NO - 35%

I am concerned about the environmental impact on the river from dredging. YES - 71% NO - 29%

I think the river needs dredging in some area. YES - 57% NO -32% UNDECIDED=11%

BOAT HARBOUR

What would you like to see included in the new Master plan for the Boat Harbour?

- Landscaping and increased vegetation **71%**
- Emergency equipment/ fire fighting/oil spills/ first aid **63%**
- Non-powered craft launching area **63%**
- Small boat launch area **60%**
- Hidden car park i.e. vegetation **56%**
- Restaurant/cafe **54%**
- Public facilities/ toilets/showers/garbage **45%**
- Same size marina **44%**
- Yacht club moorings **44%**
- Slipway **21%**
- Expanded marina, pontoon in the middle **21%**
- Expanded car park **20%**
- Residential accommodation **14%**
- Tourist accommodation **11%**
- Retail **11%**
- Marine commercial **11%**
- Chandler **10%**
- General commercial **3%**
- Other: Environmental educational signage / Low key / Car park not on the river

The community of Brunswick Heads was only contacted about repairs to the rock wall after the work site was set up. This is not early enough. There was no real chance of stopping the asphalt if we wanted to. However once consultation commenced it was courteous and inclusive. Some of the community suggestions were implemented. A sand track was reattained alongside the asphalt to allow barefoot walking by surfers and children to the beach. No seating was introduced but rather rocks were used for seating to maintain the natural feel of the area. A new plan for dredging pipes layout, which went behind Harry's Hill, was adopted to protect nesting shore birds. Generally work was done efficiently and in a timely manner and the community has continued to be informed. The community would like to see exposed Geomat along the Southern Breakwall covered by 5cm rocks to finish the job and reduce any further exposure if it. See picture below.

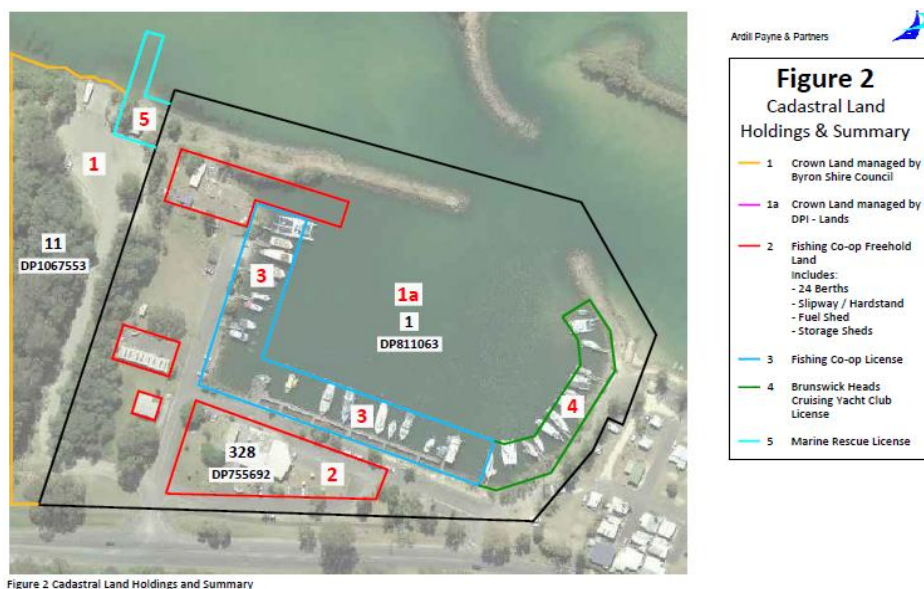


BRUNSWICK HEADS BOAT HARBOUR MASTER PLAN

The Progress Association held another public meeting on Monday 4 April at Memorial Hall, Fingal St at 7pm to explain to residents the options being put forward in the Boat Harbour Master Plan.

Residents were encouraged to complete the 'HAVE YOUR SAY' survey online, to submit your comments electronically, at <http://www.surveymonkey.com/r/BoatHarbour>

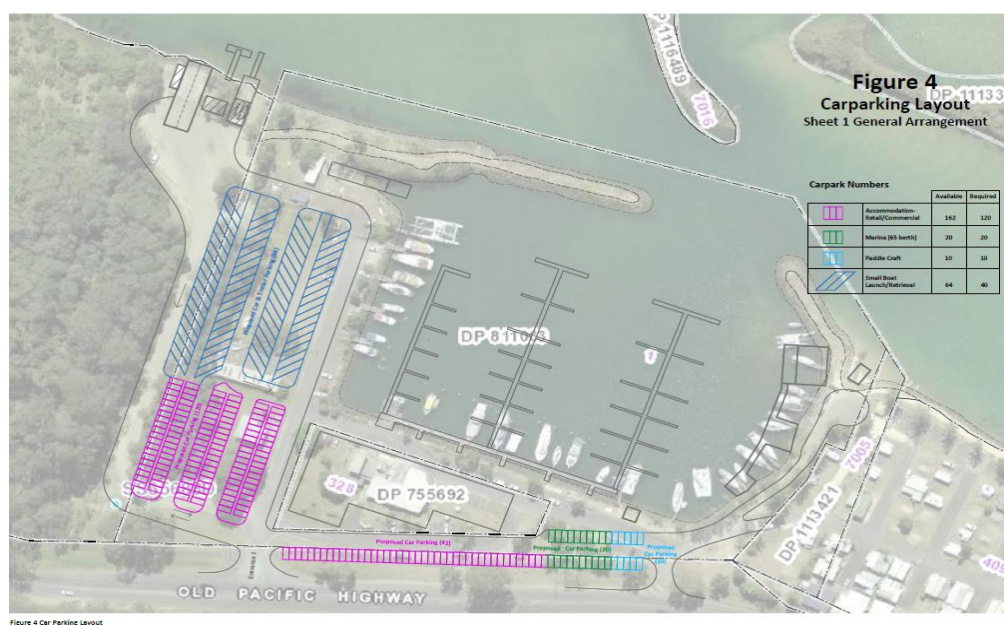
The inquiry should request the results of the above survey of residents from Department of Primary Industries Lands PO Box 4291, Coffs Harbour, NSW, 2451



The area under consideration in the Boat Harbour Master Plan has the following zoning description under Council's 2014 LEP

- The success of the plan rests on private-public funding. This model involves the rezoning of existing, privately owned, land occupied by the Fish Co-Op. This would provide options for development of that land. Possibilities for re-development outlined in the Master Plan included a 40-room boutique hotel and 2000 sqm of high-end retail outlets. Both the scale and nature of these proposals are completely out of character with the existing nature of the town and are dependent on the conversion of existing public parkland into car parking. The provision of 142 parking spaces on Crown Land would remove the need for the developers to provide parking on site. This is of great concern to the community as the need to provide car parking on site is a natural constraint on the bulk and scale of any development and would prevent over-development of the site.

Activity	Amount	Rate required	Large Car/Trailer	Normal Car Space	Total Spaces shown on Figure 4
Small Boat Launch/Retrieval		Marina Code	40		64
Marina (1)	65 berths	.33/ berth		20	20
	35 berths	.33/berth		10	
Accommodation (2)	40 Rooms	1.25/room		50	162
Retail/ Commercial (2)	2000 sqm	3.5/100sqm		70	
Paddle Craft (3)				10	10
Total Normal Car Spaces				140-150	192
Total Large Car/Trailer			40		64



Crown Lands plan to triple the size of the marina by adding three new pontoons. Along with this they plan to greatly increase the parking available for the small boat launch facilities to the west of the Boat Harbour. What will be the impact of this redevelopment and the boat traffic it generates, on the Brunswick River and other users of the river? It is a creek by definition of volume of discharge and it is narrow. Power boats, swimmers and non-powered craft are in conflict already. This will intensify that conflict. The argument used is that this is not Crown's responsibility. That position is irresponsible particularly since two government departments are involved.

The major expansion proposed in the Boat Harbour Master Plan is not supported by the community as it does not reflect the 'simple pleasures, low key' vision of the town. Further consultation with residents is needed to get the Master Plan right.

FINAL STATEMENT

If it was not for the work of the Brunswick Heads Progress Association (the longest running residents group in NSW) the residents of our town would not have been aware of any plans being put forward for Crown Lands in our town. Public consultation by Crown Lands with the residents of Brunswick Heads has been token, if at all. By letter dropping all residents and holding town meetings we have informed and given residents a chance to have their say. All the data in this submission clearly shows that some of the major changes for our town on Crown Land are not supported. A cookie cutter approach will not work in Brunswick Heads. Real consultation is needed to achieve the best outcomes for our beautifully, unique town.

All plans for Crown Lands in Brunswick Heads must reflect the 'simple pleasures, low key' vision for our town. This vision sets us apart and makes our village truly unique.

To date, communication by residents to Crown Lands has largely been ignored. The community's only hope of saving Brunswick Heads from these unwanted changes and retaining our town's unique, unspoilt, beauty is this enquiry. We hope you can help us.

Please feel free to contact me if necessary

Thank you for your time,

Leone Bolt

On behalf of the

Brunswick Heads Progress Association

brunswickheadsprogressassoc@gmail.com