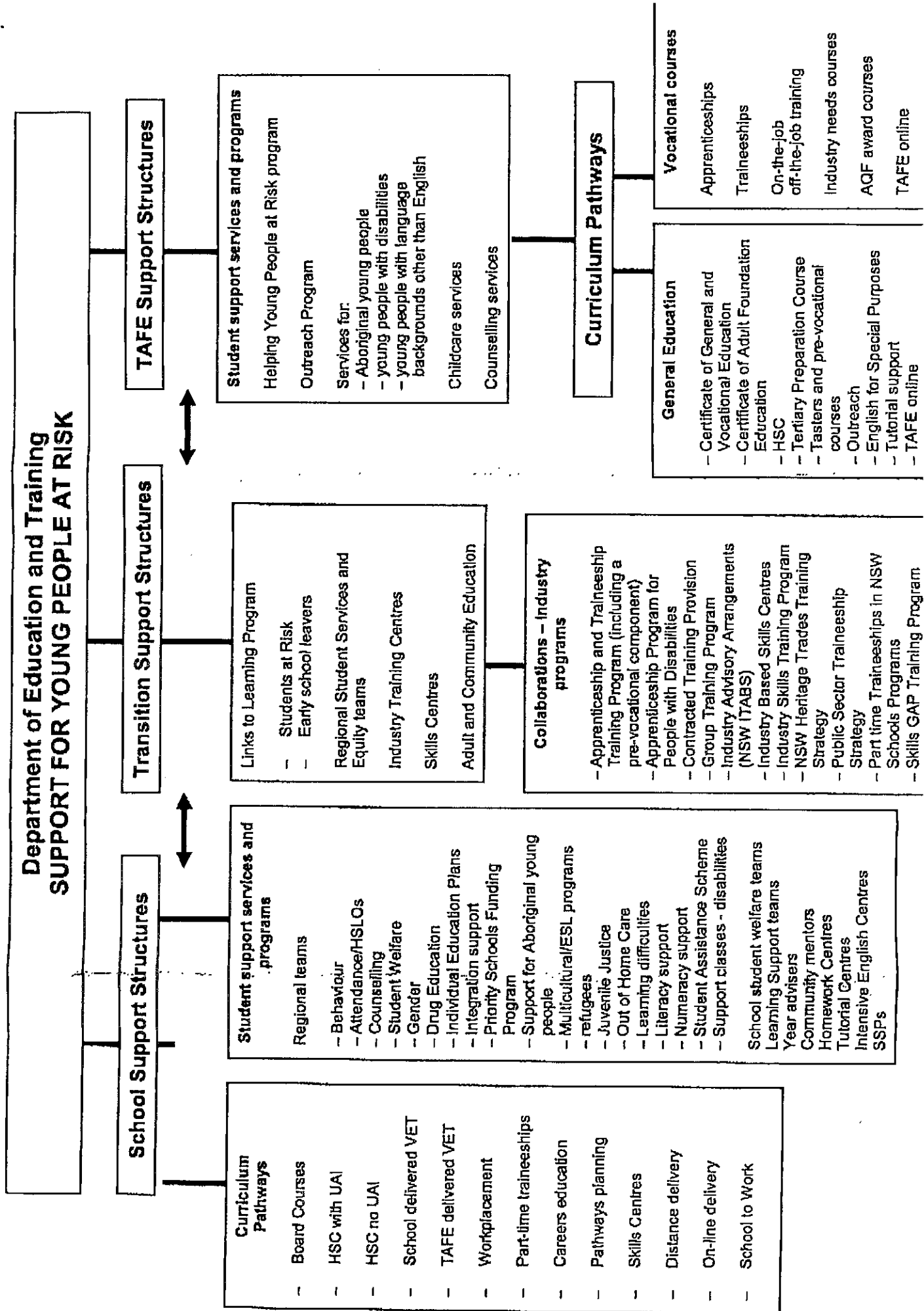


**INQUIRY INTO COMMUNITY BASED SENTENCING
OPTIONS FOR RURAL AND REMOTE AREAS AND
DISADVANTAGED POPULATIONS**

Organisation: NSW Government
Name: The Hon Carmel Tebbutt MLA
Position: Minister for Education and Training
Telephone:
Date Received: 10/02/2006



Location	Program	Target group
Bourke	Links to Learning Projects assist young people of high need in disadvantaged areas throughout the State. Projects work with either students in identified NSW Government high schools who experience significant difficulties in participating in formal learning environments and are at risk of leaving school before completing post-compulsory education, or young people who left school early (15-24 years) and are not in education or training.	15-19 year old youth at risk (DET funded – auspiced by Bourke Shire Council)
	Tutorial Centre – Bourke High School	2 classes for students in Years 5-8
	Families First. The Parents as Teachers Program	Bourke Primary School
	Mentoring Project funded through Community Solutions and Crime Prevention Strategy for 2004. Features of the project have been incorporated into school programs.	Initially Year 8 and Year 9 students at Bourke High School, although due to success was expanded to Year 10 and Year 11 students.
Brewarrina	Links to Learning	12-15 year old youth at risk with literacy/numeracy focus (DET funded auspiced by Brewarrina Shire Council)
	Families First. The Parents as Teachers Program	Brewarrina Central School
	Youth Engagement in Education Program DET working with local community	Brewarrina Central School Targeting students who are disengaged from education
Griffith	Tirkandi Inaburra Project – Initiative of the Attorney General's Department Located at Coleambally near Griffith. The project will be controlled and operated by the local Aboriginal community within a working partnership with the NSW Government	Residential centre 12-15 year old Aboriginal boys who are at risk of becoming involved in the criminal justice system. To commence operation in 2006 with DET to provide 2 ED teachers.
Bega	Koori Support Program Jointly funded by DET and CDEP (Community Development Employment Program) and Mission Australia. Short term project (26 weeks – currently operating for 6 weeks)	Bega High School Aims to improve attendance, increase retention rates, improve literacy and numeracy outcomes and develop school to work pathways for Aboriginal

			students
	Breakfast Club- conducted by DET and Red Cross with assistance from Work for the Dole Program in 2005		Bega Primary School and Bega West Primary School (20 students) Aim: to provide a nutritious breakfast for students
	Suspension Centre - Bomaderry		Students in years 5-10 who are on long suspensions (up to 20 days) and likely to benefit from a planned intervention to return them to school as quickly as possible
Murdi Paaki Regional Council	Murdi Paaki Project - National School Drug Education Strategy Whole of Government approach in partnership with Murdi Paaki Regional Council. Total funding of the project is \$327,100 over 2 years. Area of the project includes the communities of Bourke, Brewarrina, Broken Hill, Cobar, Collarenebri, Coonamble, Dareton, Enngonia, Goodboga, Gulargambone, Ivanhoe, Lightning Ridge, Menindee, Quambone, Tibooburra, Walgett, Wellmoringle and Wilcannia.		Aim: To improve the outcomes for students in rural and remote areas, particularly Aboriginal students by supporting schools to work with their communities to deal with drugs and drug related issues Catholic and government schools with their local communities will be invited to develop a proposal to work on issues identified by them as being of concern.