

Submission
No 161

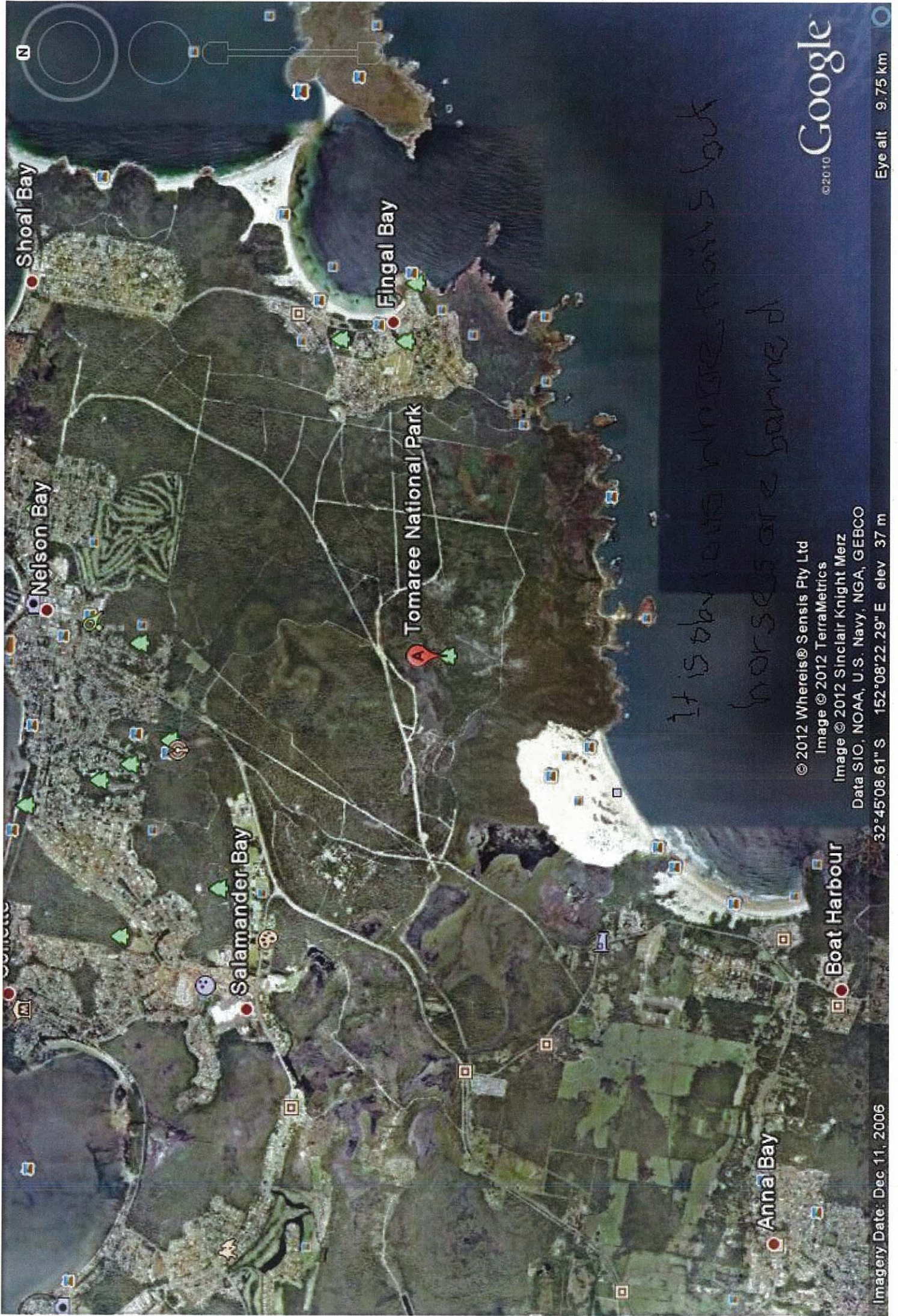
**INQUIRY INTO MANAGEMENT OF PUBLIC LAND IN
NEW SOUTH WALES**

Name: Name Suppressed
Date received: 31/07/2012

Partially Confidential

I used to ride horses on the Tomaree Peninsula when the land was Crown Land. There are many horse owners/riders in this area who would like to regain access the dirt access roads made by the Water Authority and the Fire Trails both of which are very evident in the attached photo. NPWS stance currently is that horses 'damage the environment and introduce foreign plant material'. The visible damage to the park in the Nelson Bay area has been created by machinery, belonging to either the NPWS or people with 4wheel drive vehicles accessing the park illegally. Feral plants consist of bitou bush, lantana or escaped domestic plants, none of which are transferred by horses, either in droppings or on their feet or coat.

Thank you for considering this submission.



It is obvious where the mares are but
horses are being d

© 2012 Whereis® Sensis Ply Ltd
Image © 2012 TerraMetrics
Image © 2012 Sinclair Knight Merz
Data SIO, NOAA, U.S. Navy, NGA, GEBCO
32°45'08.61" S 152°08'22.29" E elev 37 m

©2010 Google
Eye alt 9.75 km

Imagery Date: Dec 11, 2006