

Lifetime Care and Support Authority of NSW

Participant statistics:
20 May 2010

Scheme participant numbers as at 21 May 2010

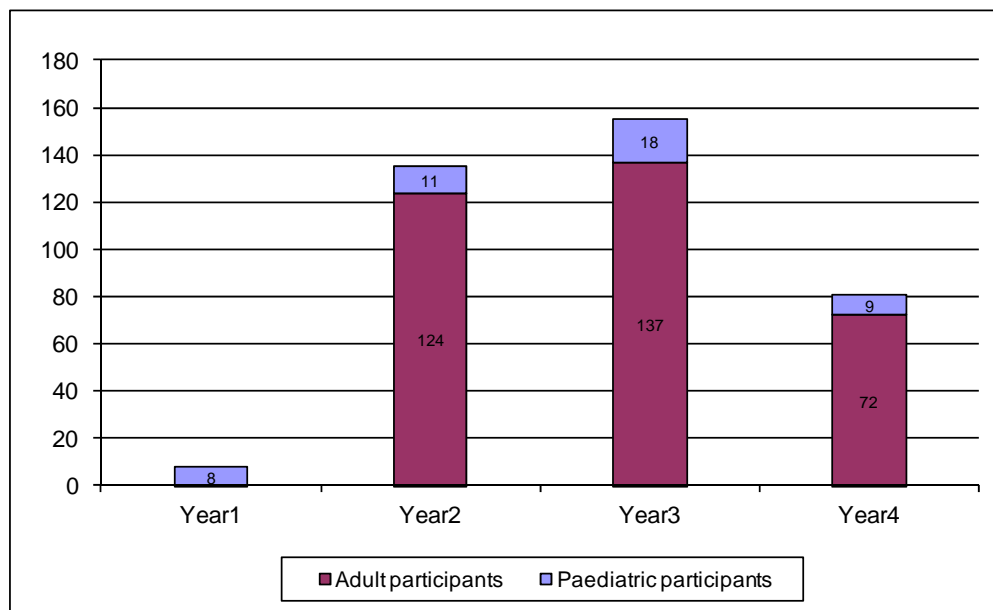
- **379** participants in the Scheme
 - 50 lifetime participants
- 46 paediatric participants (under 16)
 - 30 male (3 not lifetime participant)
 - 16 female
- 333 adult participants (14 not lifetime participant)
 - 232 male (6 deceased)
 - 101 female (2 deceased)

Scheme participant numbers

	Accident year				All
	Year1	Year2	Year3	Year4	
Paediatric participants	8	11	18	9	46
- Lifetime participants	8	4			12
- Not Lifetime participants	1	2			3
Adult participants		124	137	72	333
- Lifetime participants		38			38
- Not Lifetime participants		14			14
- Deceased participants		4	1	3	8
All participants	8	135	155	81	379

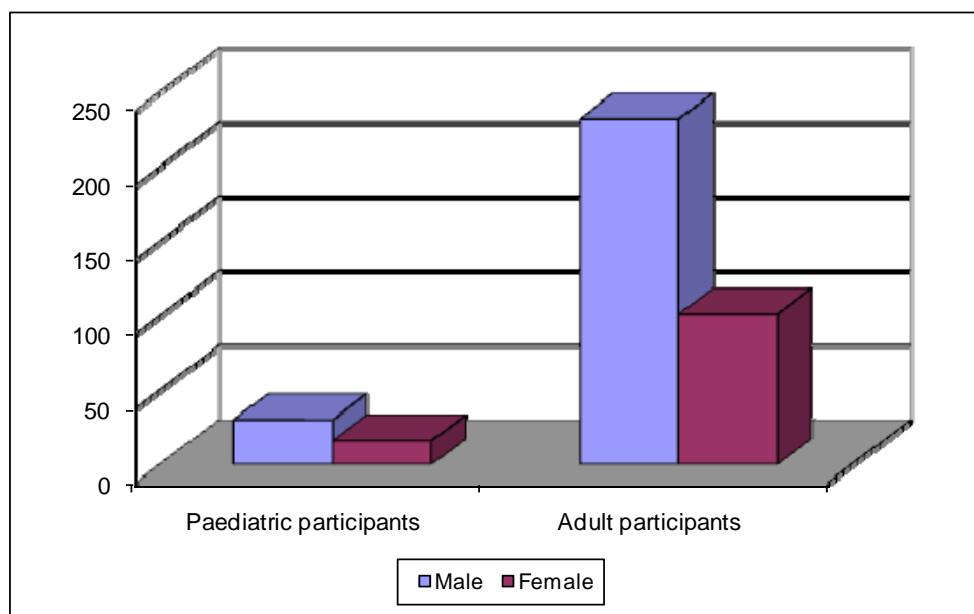
Accident years: 01 Oct - 30 Sep

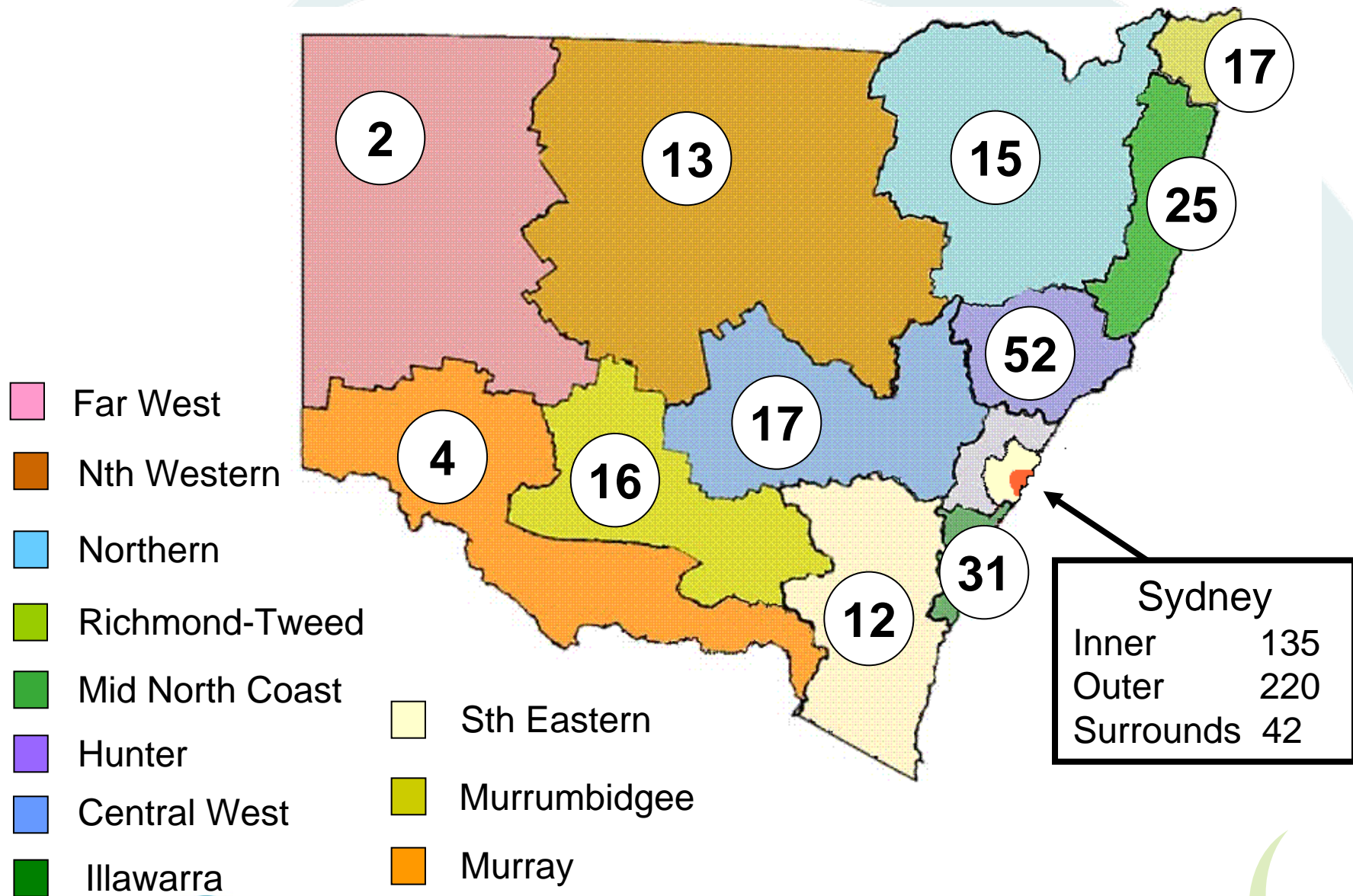
Data as at 21 May 2010



Scheme participant numbers

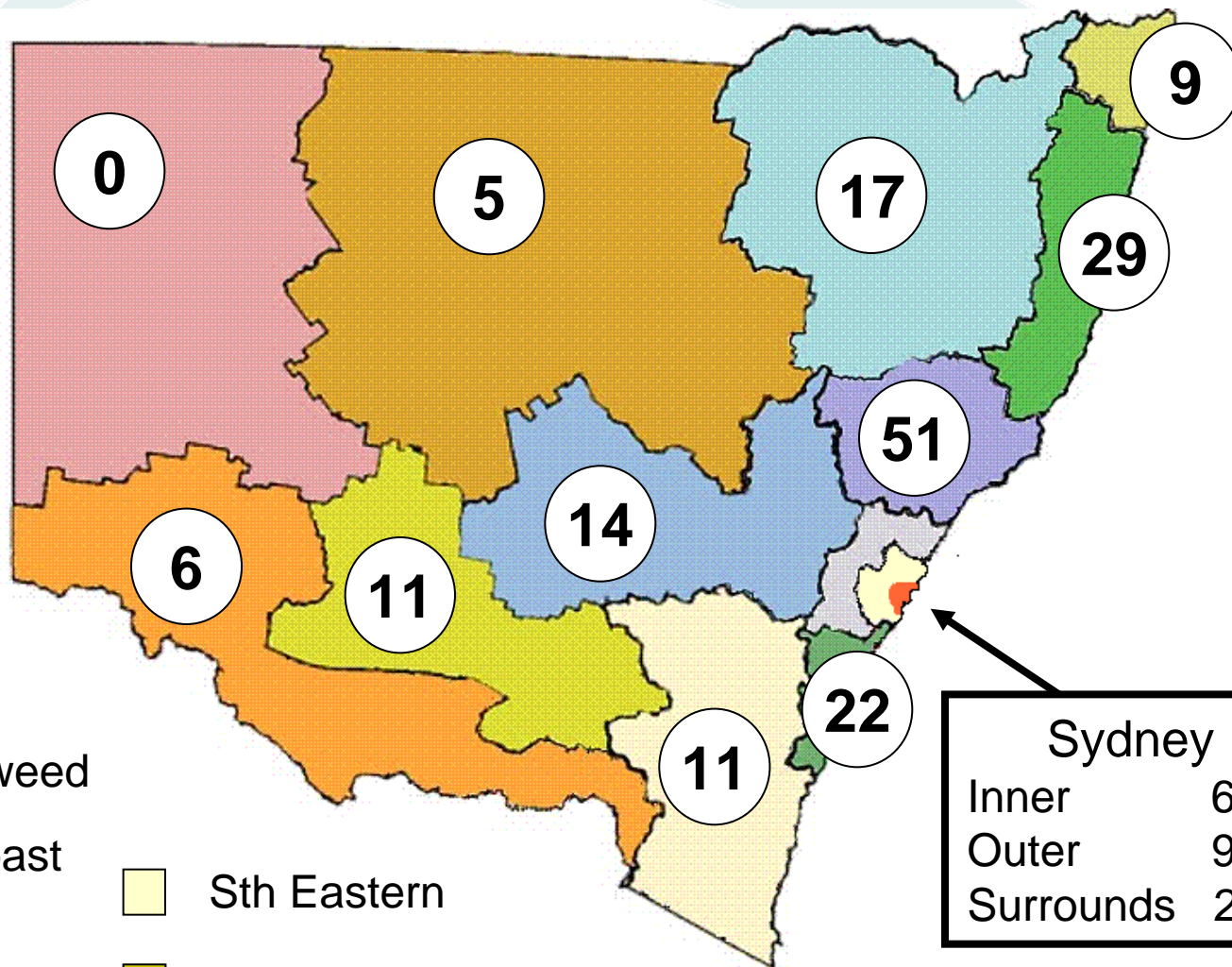
	Gender				All
	Male		Female		
Paediatric participants	30	65.2%	16	34.8%	46
Adult participants	232	69.7%	101	30.3%	333
All	262	69.1%	117	30.9%	379





- Far West
- Nth Western
- Northern
- Richmond-Tweed
- Mid North Coast
- Hunter
- Central West
- Illawarra

- Sth Eastern
- Murrumbidgee
- Murray



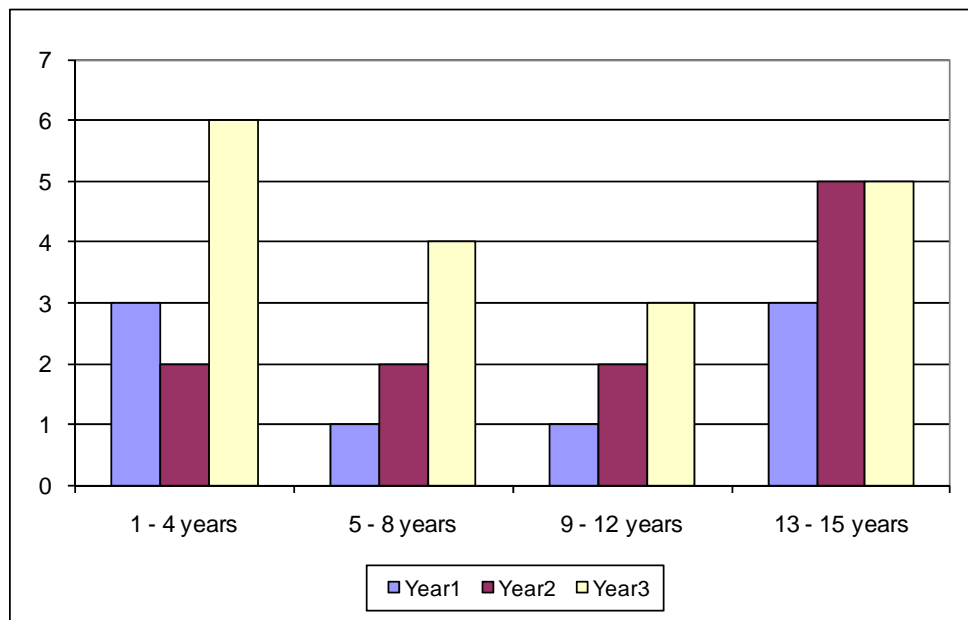
as at 21 May 2010

Scheme participants: injury type as at 21 May 2010

- Paediatric (46)
 - 40 traumatic brain injury
 - 6 spinal cord injury (incl. 1 brain injury)
- Adult (333)
 - 258 traumatic brain injury
 - 69 spinal cord injury
 - 1 traumatic brain & spinal cord injury
 - 3 amputations (2 bilateral LL amputee, 1 hindquarter amputation)
 - 2 severe burns (1 with spinal cord injury)

Age distribution: paediatric participants as at 21 May 2010

Age at injury	Accident year				All
	Year1	Year2	Year3	Year4	
1 - 4 years	3	2	6		11
5 - 8 years	1	2	4	1	8
9 - 12 years	1	2	3	4	10
13 - 15 years	3	5	5	4	17
All	8	11	18	9	46



Participant role in accident

as at 21 May 2010

Paediatric

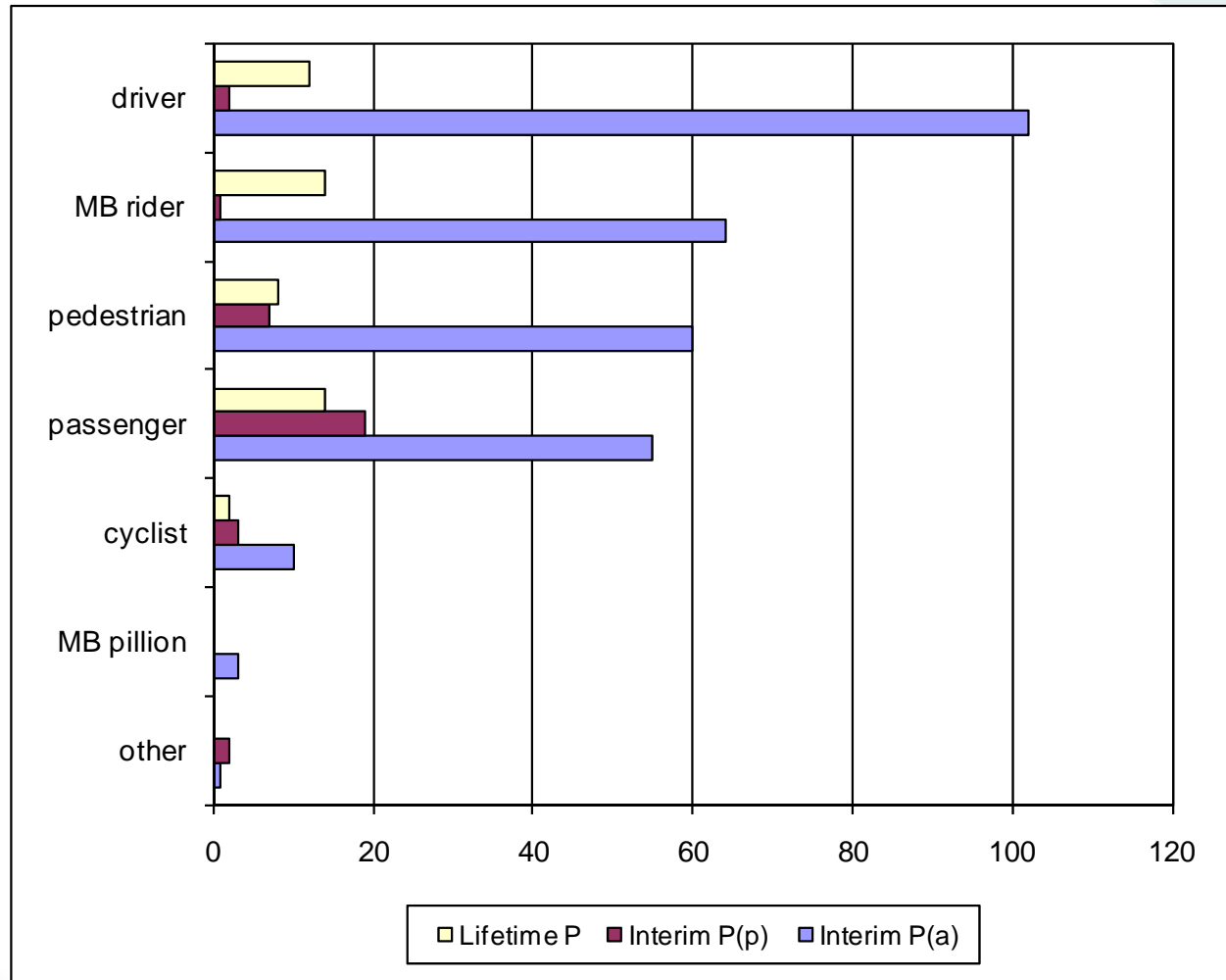
Role in Accident	Total	%
Passenger	24	52.2%
Pedestrian	13	28.3%
Cyclist	4	8.7%
Driver	2	4.3%
Other	2	4.3%
Motorcycle rider	1	2.2%
All	46	100.0%

Adults

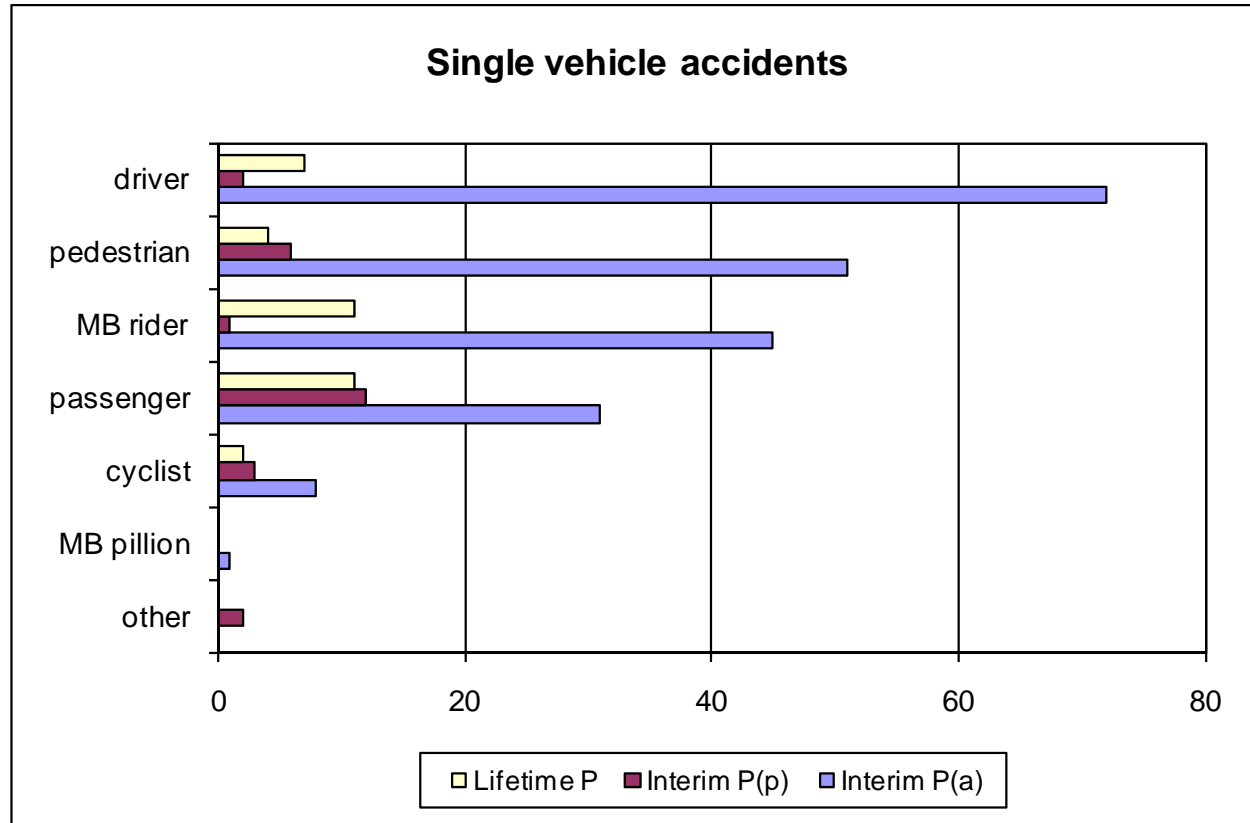
Role in Accident	Total	%
Driver	114	34.2%
Motorcycle rider	78	23.4%
Passenger	64	19.2%
Pedestrian	62	18.6%
Cyclist	11	3.3%
Pillion passenger	3	0.9%
Other	1	0.3%
All	333	100.0%

Participant role in accident

as at 21 May 2010

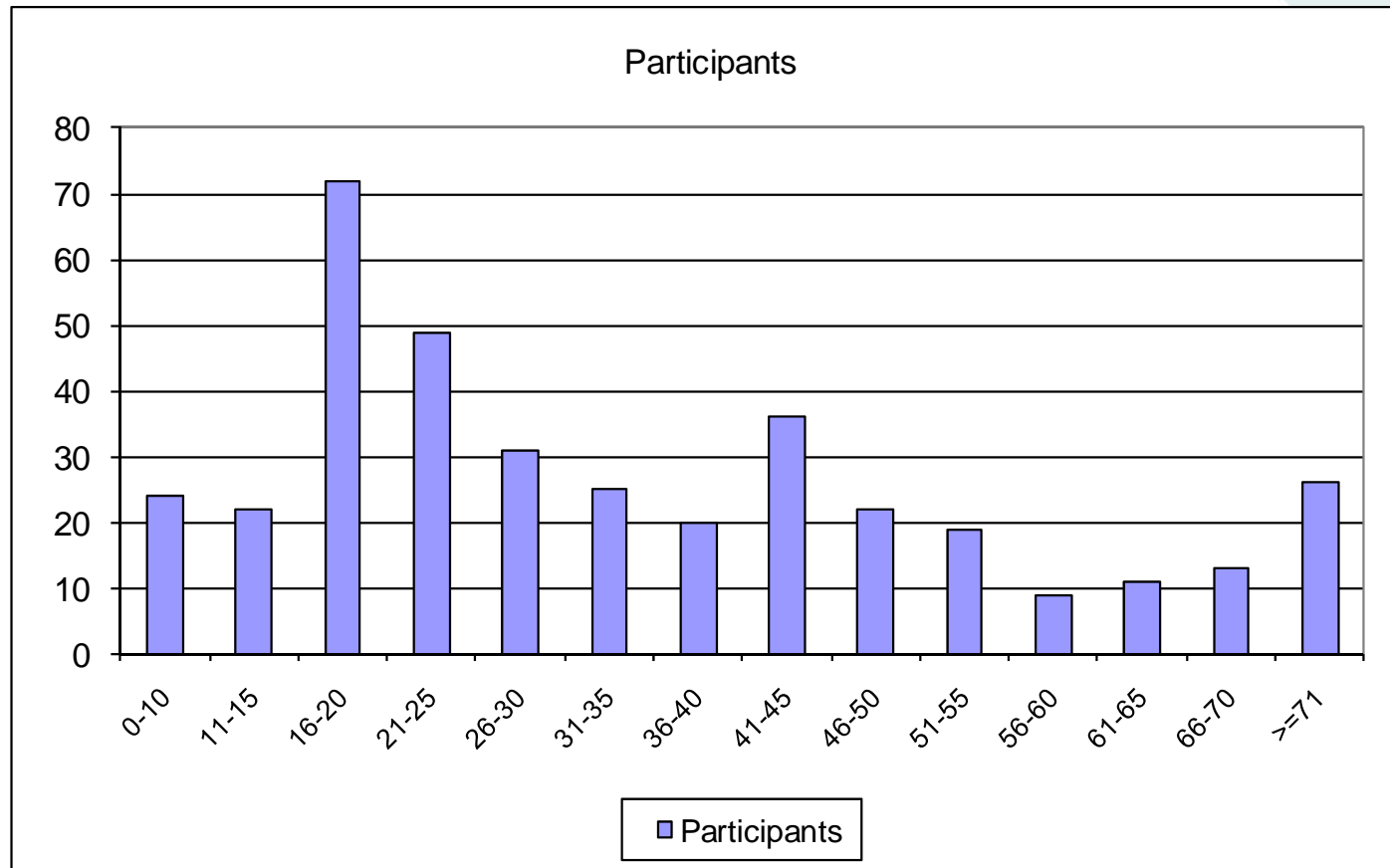


Participant role in single vehicle accidents as at 21 May 2010



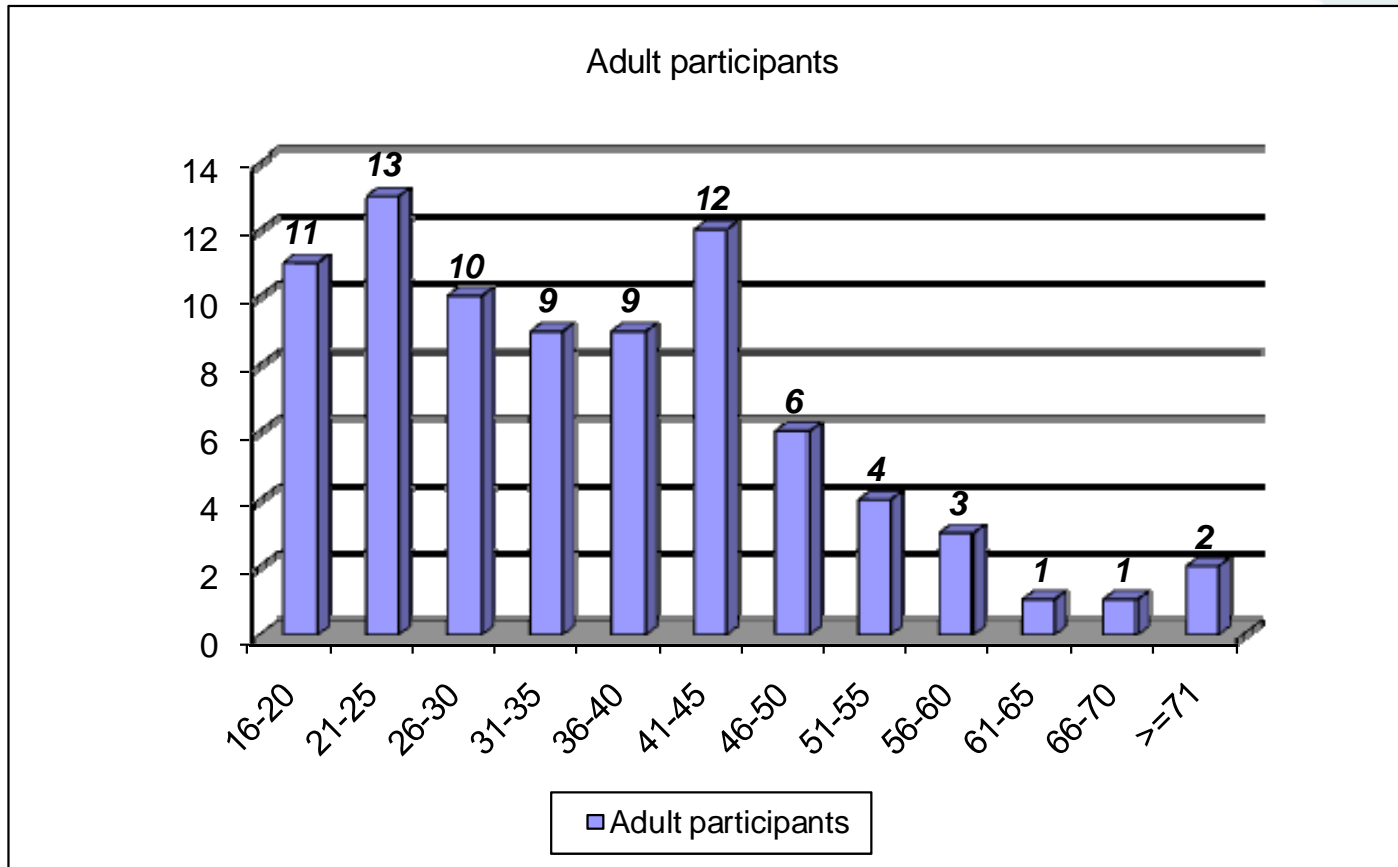
Scheme participants: Age

as at 21 May 2010



Motorcycle riders (incl. pillion)

as at 21 May 2010



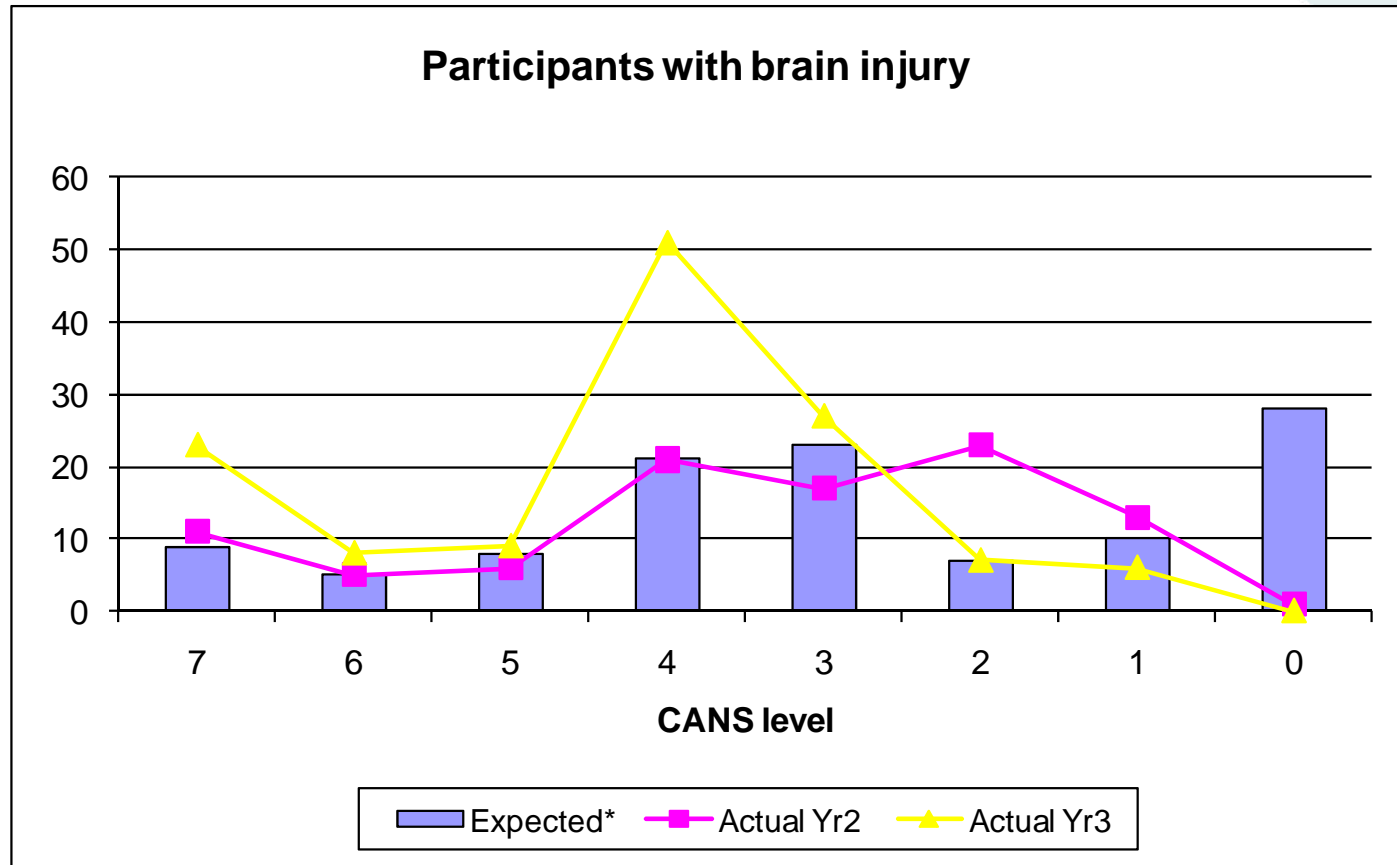
Participants with brain injury as at 21 May 2010

It is expected that the CANS level for most participants with a brain injury will improve. Participants with an initial CANS level of 7 (24 hours of care a day) may improve to CANS level 4 (up to 11 hours of care a day). Those with CANS level 0 to 3 may no longer be eligible for the Scheme at 2 years.

CANS level (incidence)	Expected*	<u>Actual</u>	
		Yr2	Yr3
7 - 24 hour care / day	9	11	23
6 - 20 - 23 hour care / day	5	5	8
5 - 12 - 19 hour care / day	8	6	9
4 - 11 hour care / day	21	21	51
3 - Can be left alone for few days a week	23	17	27
2 - Can be left alone almost all week	7	23	7
1 - Can live alone	10	13	6
0 - Community living	28	1	
All	111	97	131

* Actuarial valuation of outstanding
claims liability as at 30 June 2009 - PWC
Actual numbers for Year 2 (01/10/2007-30/09/2008)
Year 3 (01/10/2008-30/09/2009)

Participants with brain injury as at 21 May 2010



CANS level (incidence)

- 7 - 24 hour care / day
- 6 - 20 - 23 hour care / day
- 5 - 12 - 19 hour care / day
- 4 - 11 hour care / day
- 3 - Can be left alone for few days a week
- 2 - Can be left alone almost all week
- 1 - Can live alone
- 0 - Community living

Participants with SCI

as at 21 May 2010

Level (incidence)	Expected*	<u>Actual</u>	
		Yr2	Yr3
C1-3	1	6	0
C4	4	2	5
C5	6	4	4
C6	6	1	1
C7	1	1	1
C8	1	0	0
T1	1	2	0
T2	1	1	1
T3	1	1	4
T4	1	3	1
T5	1	0	1
T6	1	0	0
T7	3	0	1
T8-T12	3	9	5
L1+	5	6	1
All	36	36	25

* Actuarial valuation of outstanding
claims liability as at 30 June 2009 - PWC
Actual numbers for Year 2 (01/10/2007-30/09/2008)
Year 3 (01/10/2008-30/09/2009)

Participants with SCI

as at 21 May 2010

