



Upper House
Committees

Inquiry into reparations for the Stolen Generations in NSW

Who is on the committee?

Jan Barham, Chair (pictured on the right, in red)

Jan is from Bundjalung country and her home is near Byron Bay. Jan has had the honour of working closely with the Arakwal Bundjalung People for over 20 years and served on the board for the Arakwal National Park.

Jan was Mayor of Byron Shire Council for 9 years and represented a community that respects Aboriginal rights and knows that to achieve outcomes they must recognise the wrongs of the past to create a better future.

Jan lives on the coast near a beautiful rainforest and enjoys quiet time gardening and basket weaving. Jan was elected to the NSW Parliament in 2011 for an 8 year term. As a member of the Greens, Jan's responsibilities are for Aboriginal Affairs, Art, Ageing, Disability, Family and Community Services, Housing, Mental Health, Tourism and Climate Change.



Natasha Maclaren-Jones, Deputy Chair

Natasha was elected at the March 2011 State election to the NSW Legislative Council. Having worked in both the public and private health sectors, Natasha brings to Parliament broad experience in public policy development.

Before entering Parliament, Natasha worked as a public affairs and government relations consultant, providing services to multinational health care companies and industry associations. She also worked as an Adviser to Ministers in the Howard Government and as a Registered

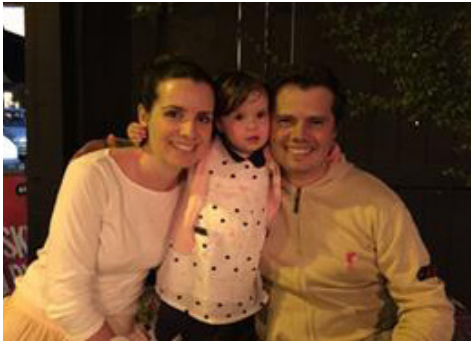
Nurse. She holds a Bachelor of Nursing and a Masters of Health Services Management. As a long time Liberal Party member, Natasha has served in a variety of positions within the Liberal Party of Australia, including being the youngest person to serve as NSW State President and the third woman to ever hold the position. Natasha has also served as State Vice-President, NSW Young Liberal President, State Convention Chair and Chair of the Liberal Women's Forum, a training and development program for Liberal Women.

Ben Franklin

Ben grew up in Barham on the Murray River in Southern NSW where his father was Principal of the local High School. After earning a scholarship to a Sydney school, Ben relocated to the city and has a Bachelor of Arts from the University of Sydney, majoring in Government and English.

Ben was the National Director for Communication and Advocacy for UNICEF Australia, and was State Director of the NSW Nationals for seven years prior to being elected to the NSW Upper House in 2015. He also plays squash, enjoys bushwalking and is a passionate supporter and defender of the Arts. He currently supports a variety of community organisations and lives on the beautiful North Coast of NSW in Bundjalung Country.





Courtney Houssos (pictured on the left with her family)

Courtney Houssos lives in Earlwood, Sydney with her husband George and their almost 2 year old daughter, Anna.

She was born and grew up in Forster on the Mid North Coast of NSW. She attended local public schools before going to Sydney to study at the University of NSW. While she was at university, she joined the Australian Labor Party, which is where she first met George. They were married in Greece in 2008 in a village by the Mediterranean Sea, where George's mother is from. Courtney spent ten years as the NSW Labor Country Organiser, travelling around country

NSW working with local Labor branch members and running election campaigns. She has a deep affection for country NSW, and the resilience and sense of community within country towns. Courtney was elected to the NSW Legislative Council in March 2015.

Sarah Mitchell

Sarah was born in Gunnedah and has also lived in Sydney, Grafton, Kyogle and Moree. She now lives in her home town of Gunnedah with her husband Anthony and their two year old daughter Annabelle.

At 32 Sarah is one of the younger Members of the Legislative Council. Prior to entering the Parliament, Sarah worked for federal MPs John Anderson and Mark Coulton. She is currently the Parliamentary Secretary for Regional and Rural Health and Western NSW. Sarah is particularly passionate about ensuring women and their families from right across the State have access to adequate maternity services, along with all the necessary prenatal and postnatal care, no matter where they live.

Sarah is a supporter of local community organisations including Gunnedah Paediatric and Maternity Support (PRAMS) and Gunnedah Family and Children's Services. In her spare time Sarah enjoys spending time with her extended family and friends, travelling, reading and cooking.



Shaoquett Moselmane

Shaoquett is a proud first generation Australian. He moved to Australia with his parents at the age of twelve. He lives in Rockdale, South Sydney with his wife Mika and son Joseph. He has been a member of the Legislative Council since December 2009 and was re-elected as a Member of the Legislative Council in March 2015, and was elected as the Opposition Whip in the Legislative Council in April 2015. He is currently the Labor Duty MLC for the electorates of Albury, Oatley, Murray, Pittwater, and Wagga Wagga. Before entering Parliament Shaoquett was Rockdale City Councillor from 1995 until 2009, serving four times as Deputy Mayor and four times as Mayor. He has been a proud member of the Australian Labor Party for over 33 years.

In 2012 Shaoquett established the Multicultural and Indigenous Media Awards. These awards recognise outstanding Multicultural and Indigenous journalists and media outlets across Australia. The National Indigenous Human Rights Awards was established by

Shaoquett, now in its second year it is the first of its kind in Australia. Shaoquett has also established the Arabic Friends of Labor and recently launched the Forum for Middle East Affairs.

Reverend Fred Nile (pictured on the far left in the photo on the right)

Revd Fred Nile was born in Kings Cross in 1934. His father was from Plymouth UK, and his mother from Wellington, New Zealand. They worked in Kings Cross – his father a taxi driver, his mother a waitress.

Rev Nile volunteered for National Service in 1952, and was an Infantry Officer and Company Commander for 22 years in the Army Reserve until 1974. He is currently the longest-serving member of the New South Wales Parliament, first elected in 1981. He is currently Assistant President, NSW Legislative Council (Upper House) and National President of the Christian Democratic Party.

Rev Nile married Elaine in 1958 and together they have four children. Sadly, Elaine passed away in 2011 from cancer of the liver. Rev Nile remarried in 2013 to Silvana Nero, who is also involved in politics.

Rev Nile holds a degree in Theology and was ordained as a Christian Minister in 1964. His special interests are family life and upholding Christian values in public policy.



Who is the committee secretariat?

The secretariat can help you if you have questions about making a submission, or if you want more information about the inquiry.



Teresa McMichael

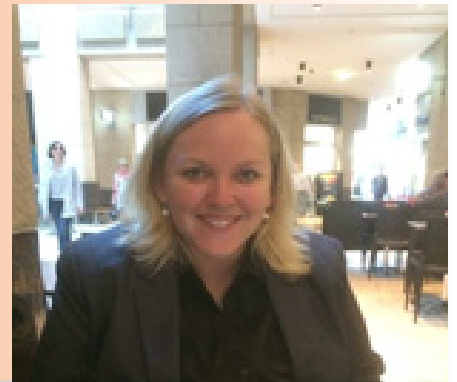
Teresa's parents are from Taiwan, however, she was born in the US and moved to Australia when she was five. She grew up in Canberra where she completed her Law degree, and now lives in Sydney with her husband and their three year old son Sam.

Teresa is the Director of the committee. She was also the Director of the 2014 inquiry into the family response to the murders in Bowraville, and she worked on the 2008 Social Issues Committee inquiry into overcoming Indigenous disadvantage. Teresa is interested in legal and criminal justice policy.

Tina Higgins

Tina was born and raised in Western Sydney, where her family still resides. She is a Principal Council Officer with committees and it is her role to provide advice and support to committees and to manage inquiries.

Tina has a legal and policy background. Prior to joining the Department of the Legislative Council, she worked as a lawyer for about 6 years, in a role that focused specifically on improving access to justice for disadvantaged clients.



Sarah Dunn (pictured with her dog Roxy)

Sarah was born and raised on the Central Coast and moved to Sydney 18 months ago. She is currently studying a Bachelor of Behavioural Studies (Psychology) online through Swinburne University of Technology.

Sarah is a Senior Council Officer with committees and it is her role to provide support to committees to ensure the orderly and efficient conduct of committee proceedings. Prior to joining the Department of the Legislative Council, Sarah worked across a number of different roles within the workers compensation industry.

Emma Rogerson

Emma was born and raised in Goulburn in the Southern Tablelands where her family still lives. In 2007, Emma moved to Wollongong to study a Bachelor of Arts (Honours) at the University of Wollongong. She now lives in Sydney with her housemate.

Emma is a Council Officer with committees. Her role is to provide administration support, liaise with stakeholders and ensure the inquiry process runs smoothly.



Contacting the committee secretariat:

You can contact the committee secretariat by calling **(02) 9230 2739** or by emailing: **gpsc3@parliament.nsw.gov.au**.