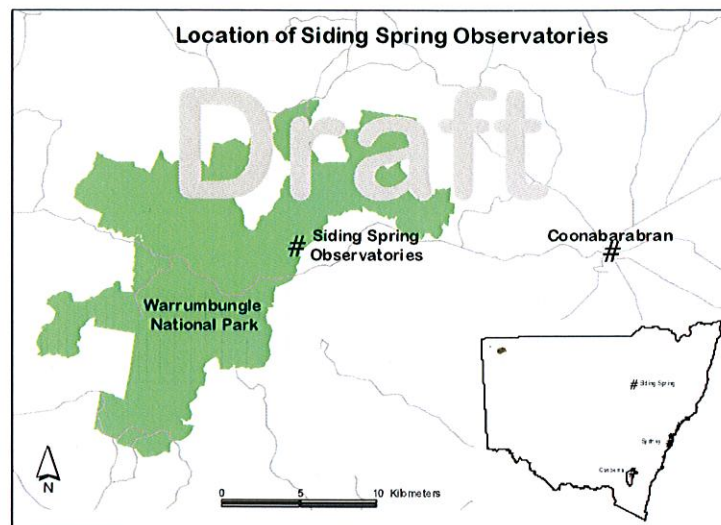


Siding Spring Site Protection Plan

Castlereagh Zone Bush Fire Management Committee

2004 - 2008



Contact Numbers		Communications	
Initial fire reports and emergencies	000	Service	Channel
Rural Fire Service - Coonabarabran		RFS repeaters	
Fire Control Officer Garry Wilson	6842 2845	Siding Spring	47
		Stratford	135
Timor Rural Fire Brigade		NPWS repeater	
Captain Bruce Madway	6842 1810	Needle Mountain	31
Siding Spring Observatory		UHF - CB repeater	4
Fire Warden Bill Green	6842 2345		
	0427 685 268	UHF-CB channel for small fires will be CH 10.	
ANU Admin Building	6842 6255	A communication plan will be implemented during larger incidents.	
ANU Fire Officer (Canberra) Tim Burrows	0416 249 706	CDMA available with line of sight to the TV tower	
National Parks and Wildlife Service		GMS - Telstra and Vodafone services, varies over site	
Coonabarabran Office (Bus. Hrs)	6842 1311	No satphone coverage	
After Hours Duty Officer	6842 0200	CTAF - 126.7	
NSW Fire Brigades	4782 8077	Airband Fx for FireOps	
Police			
Coonabarabran	6842 7268	123.45 132.55 132.75 128.70	
		122.88 119.10	

Incident declaration

Wildfires moving onto Siding Springs, with predicted threats to facilities and residences, will be classified as either a Class 2 or Class 3 fire. This will involve the appointment of a Divisional Commander to take charge of operations at the site. The Chief Fire Warden (ANU) should act as a Liaison Officer to the Divisional Commander.

Operations Centre

The operations centre for wildfires threatening Siding Spring will be the Coonabarabran Fire Control Centre.

The ANU Admin Building should be used as a Divisional Command post.

Assembly and staging areas

Locations for possible assembly or staging areas are:

- caravan / trailer parking area, near junction Timor Road and Siding Spring Road - GR 969 367
- AAT Telescope parking area - GR 966 378
- Mopra Radio Telescope - GR 996 395

Access

The main access to the site is by Siding Spring Road from Timor Road. This is all weather ZWD.

An alternate route is by a 4WD trail commencing at the Mopra Radio Telescope.

Caution is required on both routes if there is fire on the SE side of the site.

Safe areas

Safe areas where personnel can shelter are:

- ground floor of the AAT Domo
- 2.3 metre Telescope parking area (within vehicles)
- ground floor of the 2.3 metre Telescope
- tennis court area (within vehicles)
- AAT Telescope parking area (within vehicles)

Key environmental asset

Siding Spring has a significant population of Australian Anchor Plant (*Discaria pubescens*). Plants will regenerate from rootstock after a burn. Repeated frequent burning should be avoided to ensure recruitment of young plants occur.

Initial response during wildfire threat

(as required, based on assessed threat)

Activity	Agency
Activate fire units, fire teams and brigades.	ANU & RFS
Appoint Operations Officer or Divisional Command for on-site command, according to BPMC Plan of Operations.	Incident Controller
Establish Operational or Divisional Command in the ANU Admin building.	ANU
Activate building protection teams. Team members may be allocated to supporting brigades. Implement individual building protection plans.	ANU
Activate portable UHF repeater.	NPWS
Implement evacuation procedures.	ANU & Police
Assign an ANU member to manage the pumphouse.	Div. Commander

Responsibilities

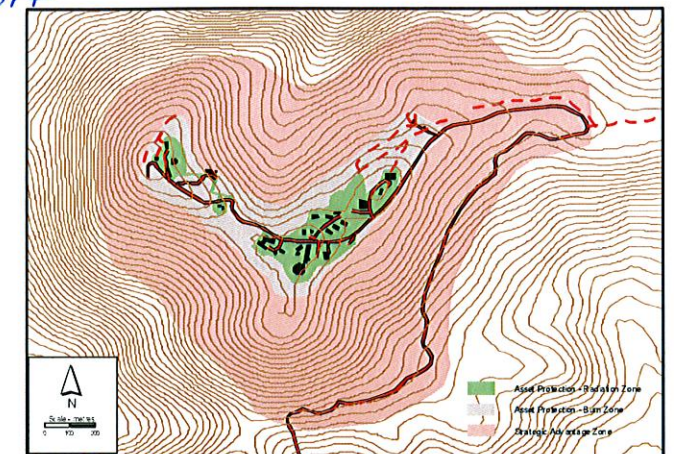
Activity	Agency
Maintain Asset Protection Zone (Radiation Zone) around facilities at Siding Spring and pumping stations along the Old Siding Spring Road..	ANU
Maintain buildings and infrastructure, and prepare <i>Building Protection Plans</i> .	ANU & AAT
Conduct hazard reduction burns in Asset Protection Zone (Burning Zone).	ANU & NPWS
Conduct hazard reduction burns in Strategic Fire Advantage Zone, according to areas of fire management responsibility.	ANU, RFS & NPWS
Manage hazardous trees along the Siding Spring Road.	Coonabarabran Shire
Manage vegetation beneath powerlines.	Country Energy
Maintain facilities for a Divisional Command post.	ANU
Plan and conduct annual fire preparedness exercises at Siding Spring.	ANU & Timor RFB
Plan and conduct periodic multi-agencies exercises at Siding Spring.	BPMC & LEMC
Ensure potential Divisional Commanders are familiarised with the facilities and resources available for incident management.	RFS

Actions 2003 - 2007

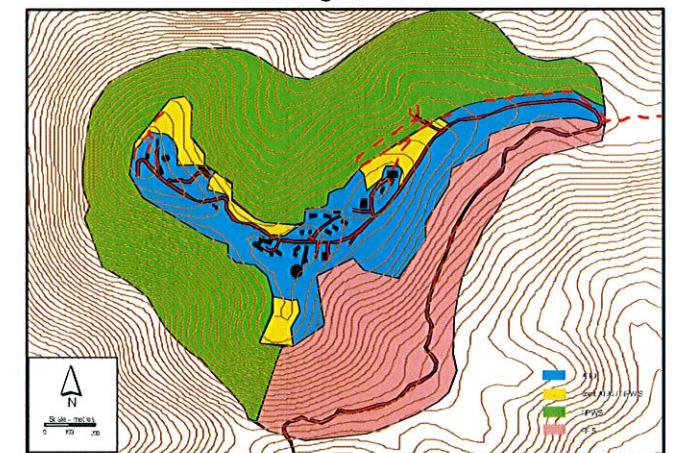
Activity	Agency

Aid agreement

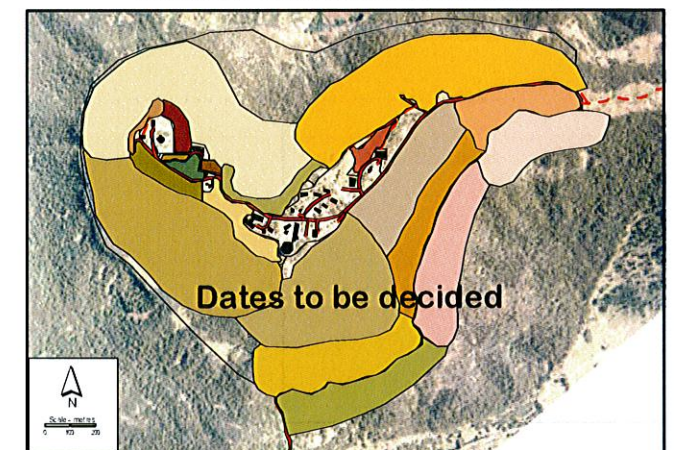
Activity	Agency
Provide advice on radiation zone management.	RFS
Provide assistance with Breathing Apparatus (BA) exercises.	NSWFB
Provide planning assistance for structure fires and building protection.	NSWFB
Provide assistance for preparing <i>Prescribed Burn Plans</i> covering ANU lands.	NPWS
Provide assistance for aerial ignition operations.	NPWS



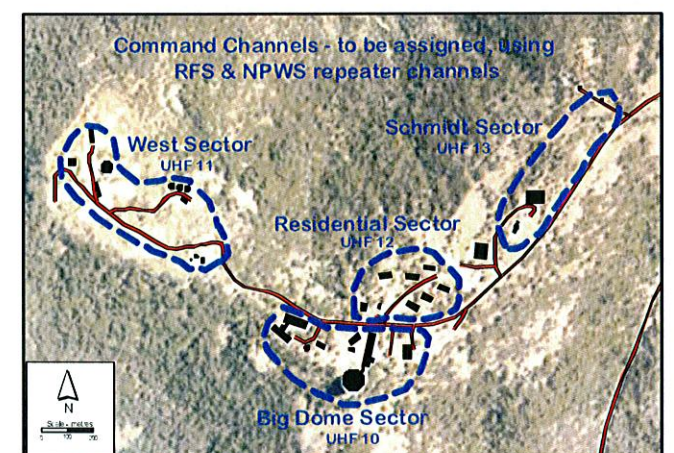
Fire Management Zones



Areas of fire management responsibility



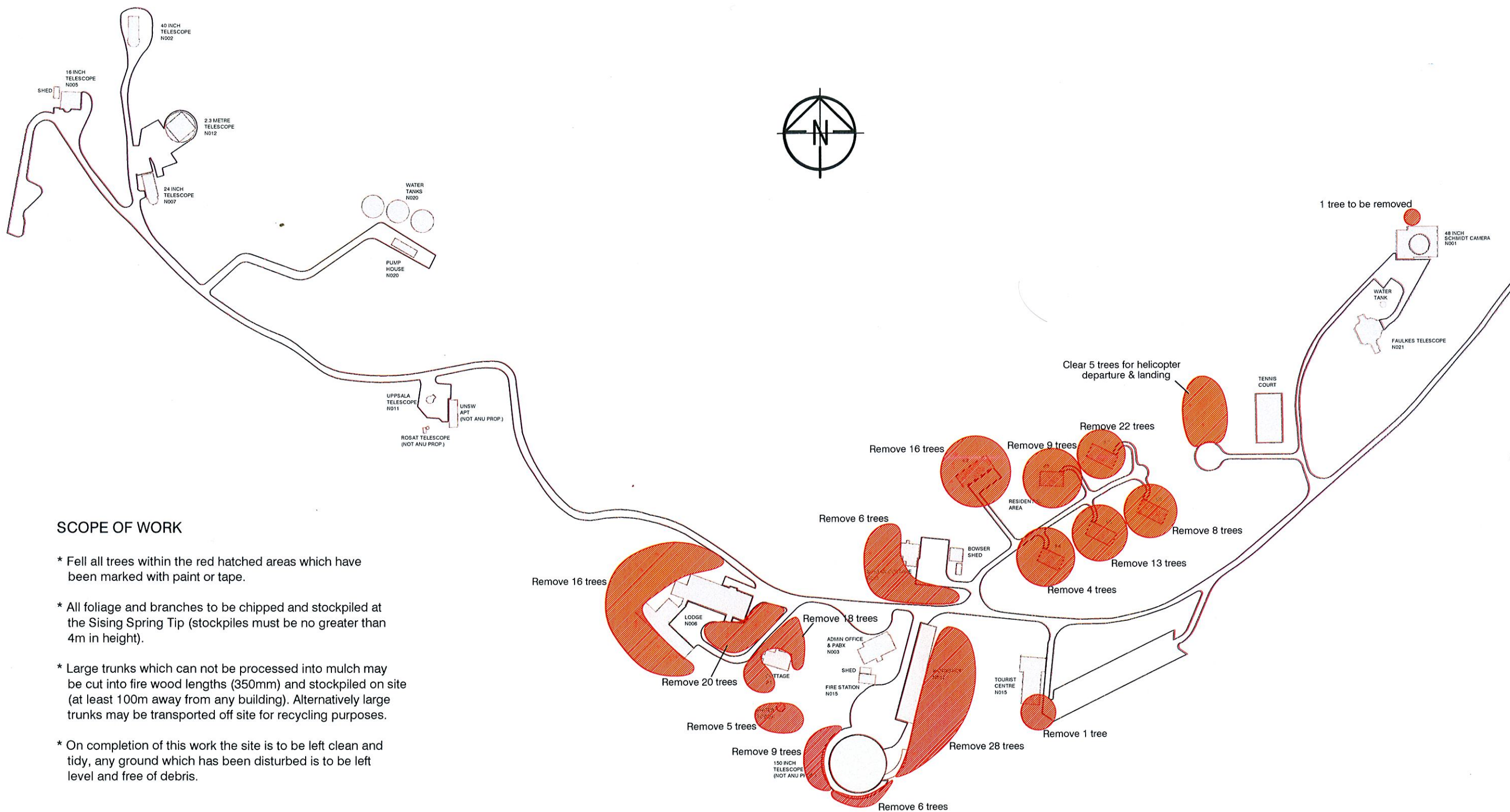
Proposed burns 2004 - 2008



Sectors and tactical channels during large scale defensive operations

Tendered by Mr. Mark Pritchard
received by Ms Shu-fang Wei
4 September 2014

Agreed to be made public



SCOPE OF WORK

- * Fell all trees within the red hatched areas which have been marked with paint or tape.
- * All foliage and branches to be chipped and stockpiled at the Sising Spring Tip (stockpiles must be no greater than 4m in height).
- * Large trunks which can not be processed into mulch may be cut into fire wood lengths (350mm) and stockpiled on site (at least 100m away from any building). Alternatively large trunks may be transported off site for recycling purposes.
- * On completion of this work the site is to be left clean and tidy, any ground which has been disturbed is to be left level and free of debris.

No.	DATE.	AMENDMENT.	DRAWN	CHECKED	APPROVED

LEGEND



Areas to be cleared

X:\ANU_LOGOS\ANU_CMYK.jpg

PROJECT TITLE:

Proposed Tree Clearing for
Fire Hazard Reduction

DRAWING TITLE:

SIDING SPRING OBSERVATORY
SITE PLAN

Date:	29/08/03	Scale:	NTS
Drawn:	JA	Checked:	NAME
Approved:	NAME	Sheet Size:	A3
IDENTIFICATION:	H:\trees\SSO tree clearing		
DRWG No:	N908/F/001/ 1 of 1		
Version No:	A		