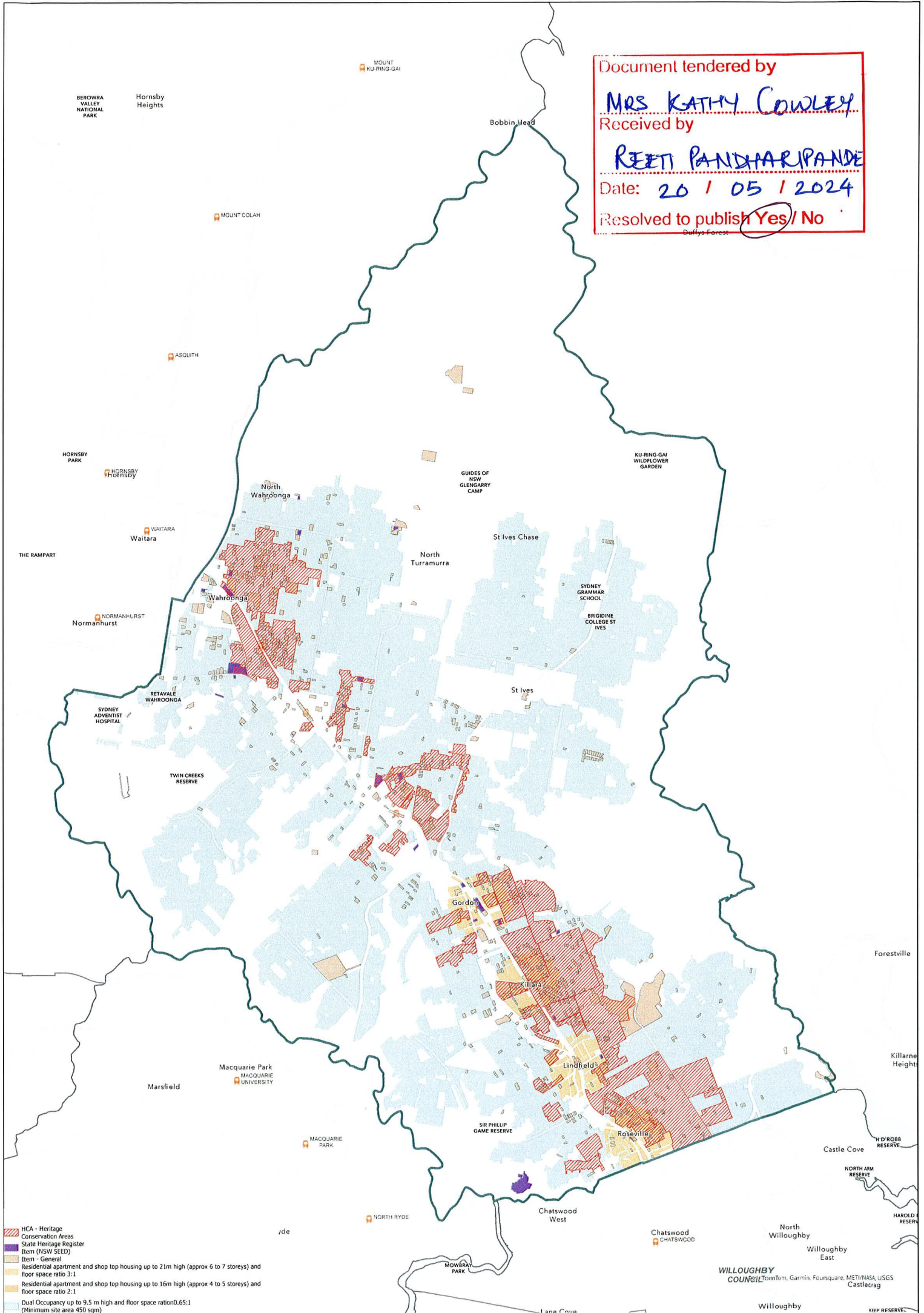
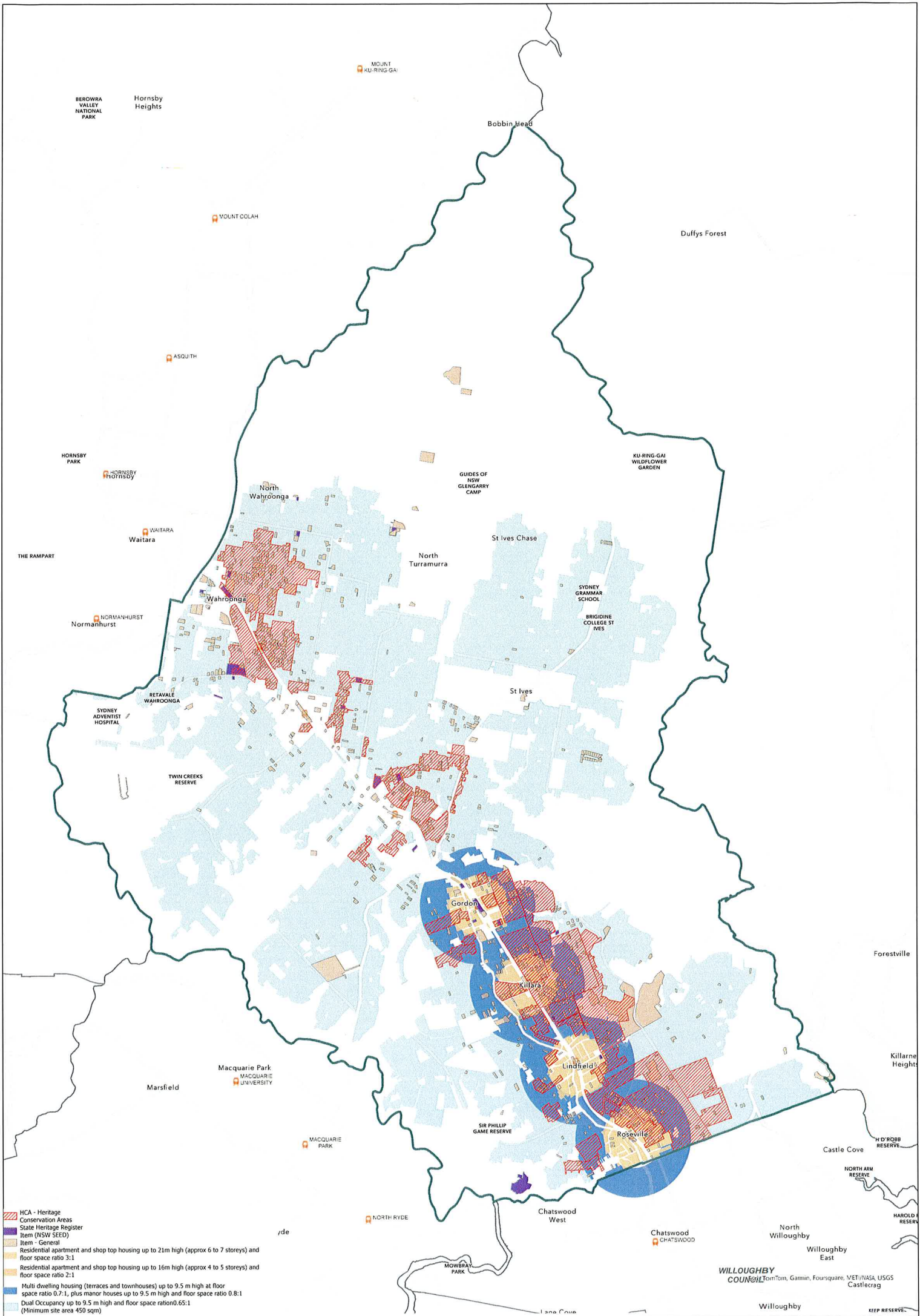


Document tendered by
MRS KATHY COWLEY
 Received by
REETI PANDHARIPANDE
 Date: **20 / 05 / 2024**
 Resolved to publish **Yes/ No**



- HCA - Heritage Conservation Areas
- State Heritage Register Item (NSW SEED)
- Item - General
- Residential apartment and shop top housing up to 21m high (approx 6 to 7 storeys) and floor space ratio 3:1
- Residential apartment and shop top housing up to 16m high (approx 4 to 5 storeys) and floor space ratio 2:1
- Dual Occupancy up to 9.5 m high and floor space ratio 0.65:1 (Minimum site area 450 sqm)



- HCA - Heritage Conservation Areas
- State Heritage Register Item (NSW SEED)
- Item - General
- Residential apartment and shop top housing up to 21m high (approx 6 to 7 storeys) and floor space ratio 3:1
- Residential apartment and shop top housing up to 16m high (approx 4 to 5 storeys) and floor space ratio 2:1
- Multi dwelling housing (terraces and townhouses) up to 9.5 m high at floor space ratio 0.7:1, plus manor houses up to 9.5 m high and floor space ratio 0.8:1
- Dual Occupancy up to 9.5 m high and floor space ratio 0.65:1 (Minimum site area 450 sqm)

WILLOUGHBY COUNCIL
 TomTom, Garmin, Foursquare, VET/NASA, USGS
 Castlecrag
 Willoughby East
 Willoughby
 Willoughby
 KEEP RESERVE