



NSW Upper House Modern Slavery Committee - Review of the Modern Slavery Act 2018

RESPONSE TO SUPPLEMENTARY QUESTION NO 2:

Proportion of SlaveCheck profit transferred to the Foundation

The SlaveCheck Foundation Limited
ACN 667 720 854
43 Figtree Avenue
Randwick NSW 2031
Australia
1300 293 761
www.slavecheckfoundation.org.au

Q2: In your evidence you noted that some of the profits from Slavecheck Pty Ltd are given to The Slavecheck Foundation.

a. Could you confirm if 100% of profits go to the Foundation?

Initially, like all technology start-ups, SlaveCheck Pty Ltd (SPL) has required capital to design, develop, launch and support the platforms until such time as they start generating profits. This capital is sourced from a range of investors on commercial terms acceptable to them and to the board of SPL.

b. If not, what is the proportion of profit that Slavecheck Pty Ltd gives to SlaveCheck

The board of SPL will balance the distribution of profits in the best interests of all stakeholders, including:

- (i) Servicing investors.
- (ii) Supporting the growth of SPL to generate more profits.
- (iii) Investment in ongoing R&D to improve and expand the technologies to better service the evolving needs of The SlaveCheck Foundation; victims and survivors; corporate customers; the capital markets; governments; NGOs and end-consumers.
- (iv) Supporting The SlaveCheck Foundation in pursuing its Purpose via free technologies, free professional services and seed funding for in-field projects and programs.

If further information or clarification is required, please contact Paul Green at paul.green@slavecheckfoundation.org.au



NSW Upper House Modern Slavery Committee - Review of the Modern Slavery Act 2018

RESPONSE TO SUPPLEMENTARY QUESTION NO 1:

Organisational Structure and Workforce Diversity of SlaveCheck

The SlaveCheck Foundation Limited
ACN 667 720 854
43 Figtree Avenue
Randwick NSW 2031
Australia
1300 293 761
www.slavecheckfoundation.org.au

Q1: What is the structure of the SlaveCheck organisation? It appears that it is actually 2 entities – SlaveCheck Pty Ltd and The Slavecheck Foundation.

Correct. The SlaveCheck solution is self-funded via a 'profit-for-purpose' business model which requires two separate organisations:

FOR PROFIT: SlaveCheck Pty Ltd ACN 634 863 433

SlaveCheck Pty Ltd (SPL) generates profits from modern slavery reporting entities using its SaaS-based Business Compliance Platform (BCP) to simplify and automate modern slavery compliance and reporting. This enables SPL to support The SlaveCheck Foundation (TSF, see below) with technology infrastructure and support **at no cost** to enable TSF to pursue its Purpose.

FOR PURPOSE: The SlaveCheck Foundation Limited ACN 667 720 854

The SlaveCheck Foundation Limited (TSF) is a not-for-profit company limited by guarantee and a registered charity (*pending*) which administers the 'for purpose' aspects of the SlaveCheck solution.

TSF's Purpose is to provide relief of distress, suffering and poverty for people trapped in - or at risk of being trapped in - modern slavery throughout the world, and to systematically eliminate the root causes of the global modern slavery problem by:

- (a) applying technologies, data, processes and professional services to engage all people and institutions of good will and to lead, coordinate and manage the collaborations among them to support this Purpose;
- (b) providing thought leadership on matters relating to the root causes of - and solutions to - the global modern slavery problem;
- (c) advocating for - and supporting the implementation of – effective anti-slavery legislation in Australia and overseas.

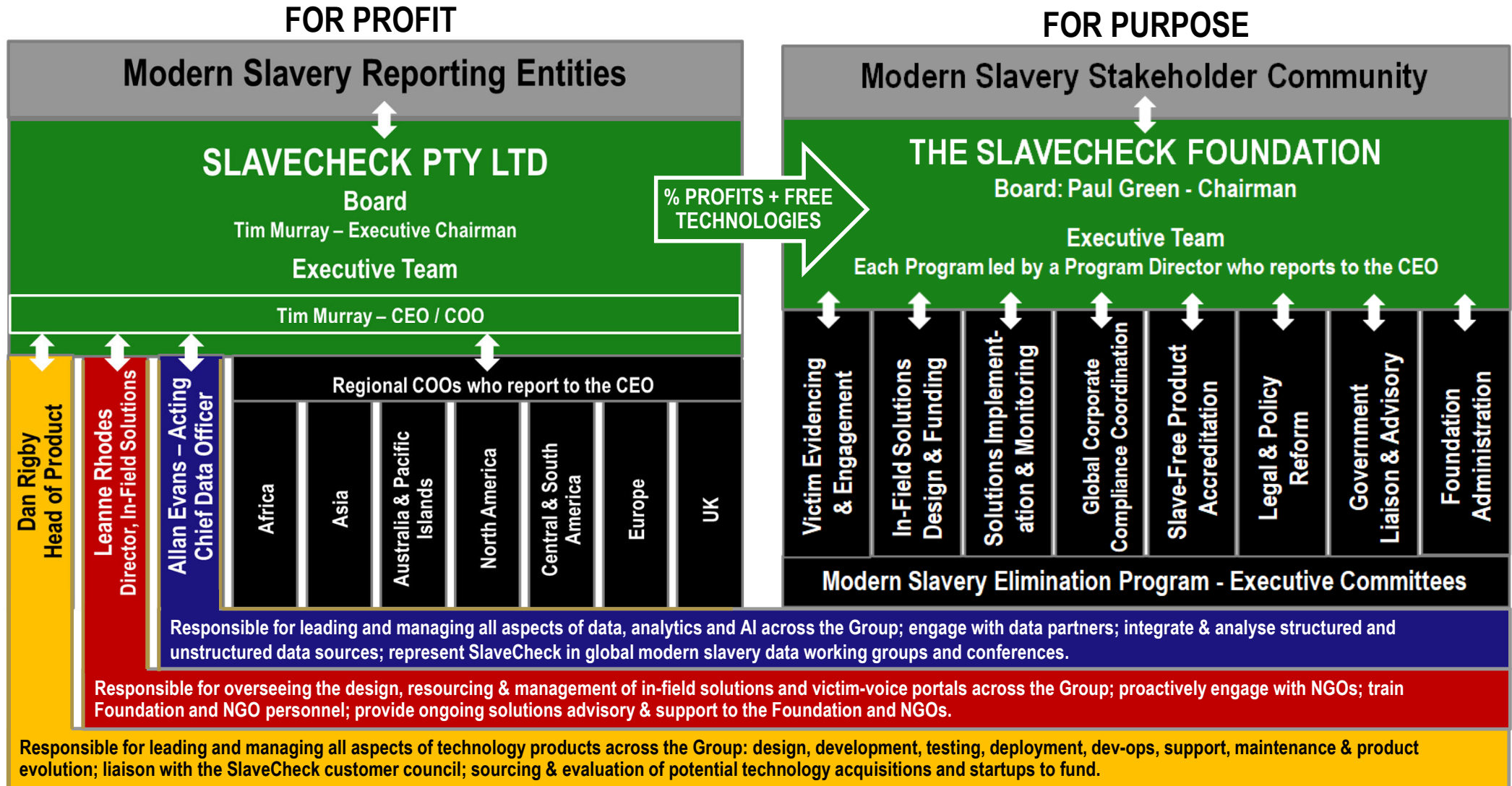
Attached is an organisational diagram plus a worked example showing how the two organisations collaborate to design, fund and implement an in-field solution to a typical use case.

Ms JENNY LEONG: If I can just follow up on Dr Kaine's point—and maybe you can take it on notice in the interests of time—it would be really helpful just in terms of the Committee's understanding of the scope of both of your organisations' work if we could get a little bit more detail about how it is funded and how the structure of the organisation works in terms of who and how, given the scope of the work you're doing, as well as any indication you're able to provide on the diversity of your workforce. Given their significant impact to culturally and linguistically diverse people when it comes to modern slavery, it would be great to know what kind of diversity there is within senior management and decision-makers, given the importance of lived experience being a key factor in how we do this appropriately and culturally appropriately.

SlaveCheck's workforce is approximately 50:50 male:female. We have engaged approximately 20 (so far) people with lived experience to participate in the **Feasibility Study into an Integrated Global Network of Trusted Victim Voice Portals** which represents the largest group in the workforce. Out of this group we hope to develop a leader to join the board of TFS and lead SlaveCheck's 'survivor voice' on the world stage.

If further information or clarification is required, please contact Paul Green at
paul.green@slavecheckfoundation.org.au

How the 'profit-for-purpose' business model works



Example showing how the two organisations collaborate to deliver in-field solutions



Cluster of Victim Voice Reports from Bangladesh

In-Field Inspection & Audit

1. Check what data is available
2. Call for Investigation Proposals
3. Evaluate Proposals; Shortlist NGOs

1. Interrogate Global Slavery Register
2. Set up Proposal Campaign
3. Train campaign managers & provide support

Advise Affected Reporting Entities

In-Field Solution Design & Funding

1. Review Shortlist; Appoint NGO
2. Develop Project Plan
3. Crowdfund funding

1. Set up, launch and manage Crowdfunding Campaign
2. Train campaign managers
3. Monitor & support campaign

Engage Affected Reporting Entities

Solution Implementation & Monitoring

1. Execute Contract with NGO
2. Provide Project Management
3. Ensure Deliverables Achieved

1. Set up Project in Solutions Platform
2. Train Project Managers
3. Advise Affected Reporting Entities

Advise Affected Reporting Entities

Rescue Victim Voices

Government Liaison & Advisory

1. Brief Bangladesh Government
2. Assist with Solution Design
3. Action Solution Design (if required)

1. Set up Collaboration Campaign
2. Train Campaign Managers
3. Provide Support as Requested

Legal & Policy Reform

1. Provide Advice to Bangladesh Govt
2. Liaise with UN, other agencies
3. Support Reform Processes

1. Set up Collaboration Campaign
2. Train Campaign Managers
3. Provide Support as Requested