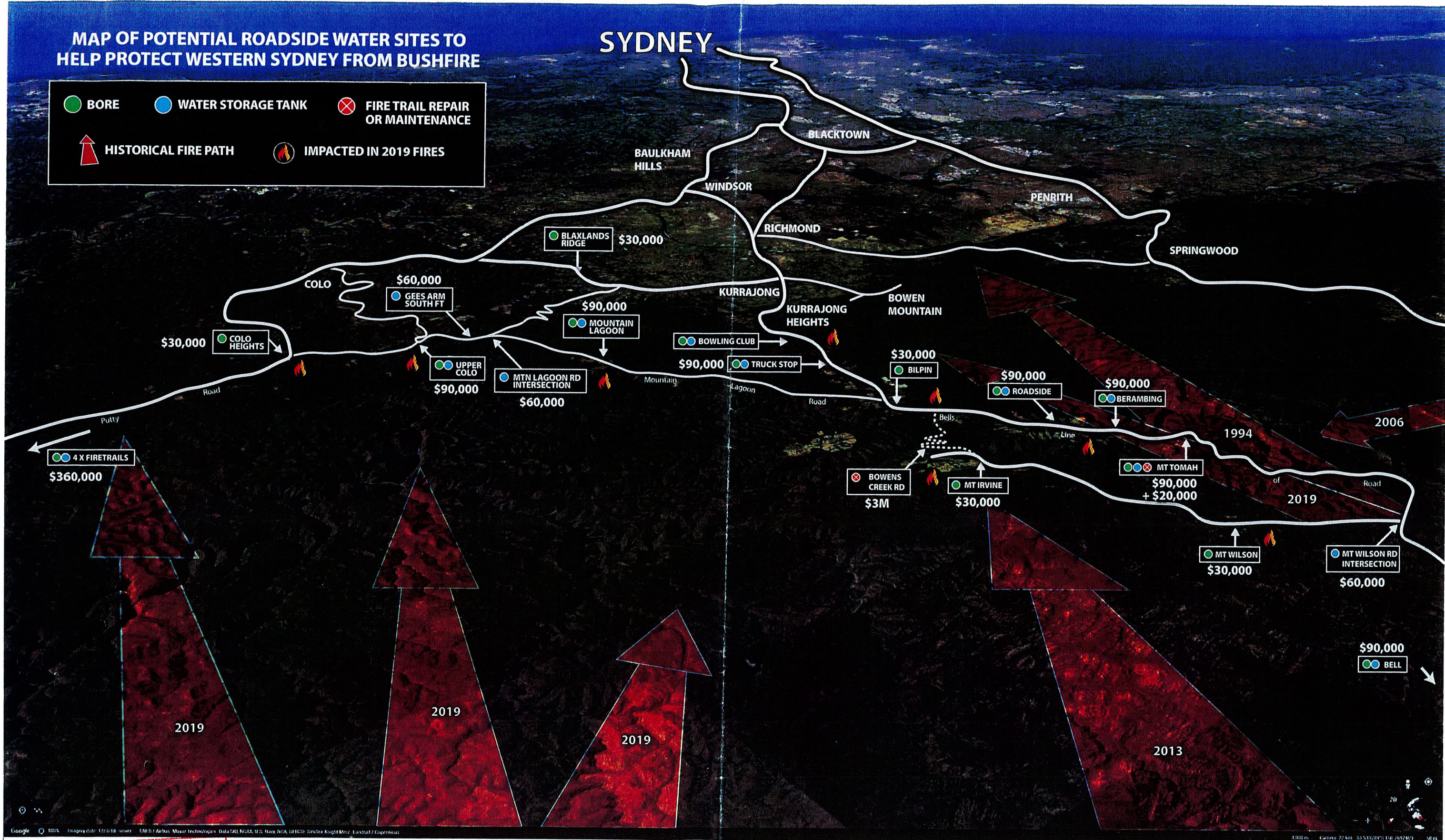


# MAP OF POTENTIAL ROADSIDE WATER SITES TO HELP PROTECT WESTERN SYDNEY FROM BUSHFIRE

## SYDNEY

● BORE     ● WATER STORAGE TANK     ⊗ FIRE TRAIL REPAIR OR MAINTENANCE  
↑ HISTORICAL FIRE PATH     🔥 IMPACTED IN 2019 FIRES

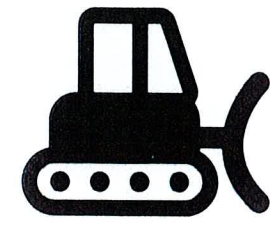


Document tendered by  
*Sue Higginson*  
 Received by  
*RMS Melbourne*  
**Water on time**  
 Date: *saved mine*  
 Resolved to publish  Yes  No



### Continuous Water Storage Costings:

- Water bore with electric pump (solar powered off grid system) **\$30,000**
- Concrete tank in ground with fire hydrant and FRNSW and RFS connections **\$35,000**
- Hard stand (concrete the trucks park on when refilling) **\$10,000**
- Power connections **\$10,000**
- Sealed driveway to and from hard stand **\$5,000**
- Total: \$90,000**



### Fire Trail Repair & Maintenance Costings:

- Mt Tomah Firetrail Clearing: **\$20,000**
- Reconstruction of Mt Irvine Rd / Bowens Creek Rd between Bowens Creek and Bilpin: **\$3,000,000\***

\*Based on Blue Mountains City Council feasibility study.