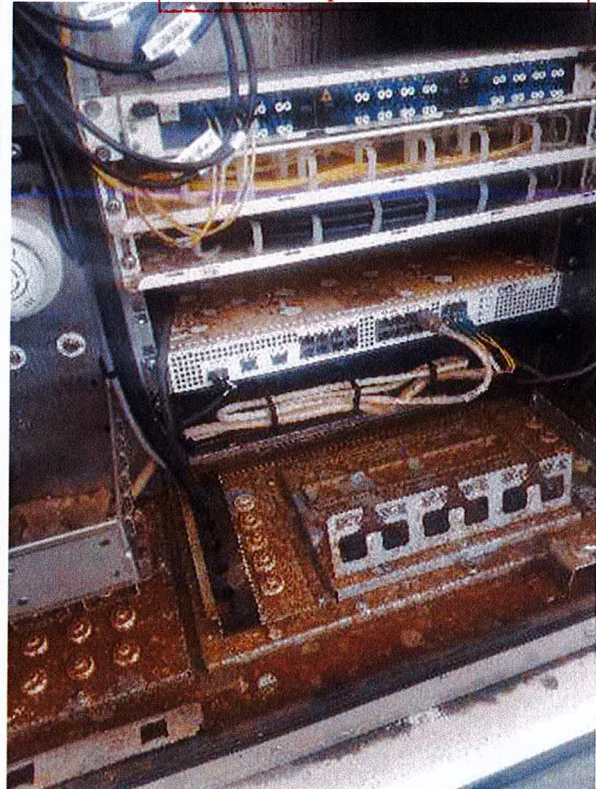




Telstra technician showing the height flood waters reached inside a mobile base station.



Damaged equipment covered in silt at a mobile base station.



Damaged fibre duct alongside a washed-out bridge, NSW/Qld border region.



Aerial view of the inundated mobile base station at Buckendoon.



Telstra field staff searching for a land-slip (likely 20-30cm in length)
in dense bushland at Blue Knob, approx. 6 km NW of Nimbin, NSW.



Lismore Exchange after flood waters had receded.
The red line shows the high-water mark.