

Lennox Head Public School

Community update

April 2022

Dear parents/carers and staff,

We wrote to you in December 2021 to let you know that the upgrade to Lennox Head Public School was not proceeding in its original form and that the focus would move to a new school on a new site.

Early planning is underway for this new project, which includes identifying a new site for Lennox Head Public School.

Early planning for the Lennox Head Public School relocation

The focus is now on planning for a new school sized appropriately in consideration of the region and whole school community group. School Infrastructure NSW has commenced early planning for a relocation of Lennox Head Public School.

Part of this early planning process includes releasing an Expression of Interest (EOI) to find a new school site. While the EOI and site search process takes place, the project team will continue developing the project proposal for a business case submission.

Expression of Interest (EOI) for land

The NSW Government is opening an EOI process, asking private landowners and developers in the region to let us know if they are interested in selling land for a school site. The EOI will be released in the coming weeks, and outlines the broad site selection criteria that will be considered, including required zoning conditions of the land.

The market will be given four weeks to provide their submissions. After this point, Property Development NSW (PDNSW), which is part of the Department of Planning and Environment (DPE) but operating on behalf of School Infrastructure NSW for this EOI, will conduct an evaluation process to shortlist preferred sites. Due diligence controls are undertaken on the shortlist, including a review of the size of the site and current transport connections, as well as detailed site investigations.

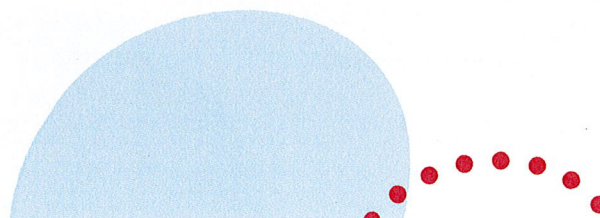
While the EOI process is underway, School Infrastructure NSW will continue to develop the Business Case to seek funding to deliver the project as a relocation with new school facilities on a new site. The Business Case explores the rationale and the case for the development, including needs analysis and population projections.

When site options are identified, masterplan design options will be developed to include in the Business Case, along with site due diligence, environmental and heritage reports and traffic feasibility studies.

The illustration overleaf outlines the planning phases of a project and what takes place during each phase. We will continue to provide updates to the community as the project progresses.

For more information contact:

School Infrastructure NSW
Email: schoolinfrastructure@det.nsw.edu.au
Phone: 1300 482 651
www.schoolinfrastructure.nsw.gov.au



NSW Department of Education – School Infrastructure

The information below takes you through the journey of upgrading or building a new school.

Early planning

- Consideration and studies of demographic trends, education requirements, the condition of the existing school buildings, catchment boundaries, heritage requirements, transport links and partnership opportunities.
- Doing so means that we:
 - consider the needs of the local area now and into the future.
 - ensure the right school is designed for the community.
- An important step before an architect or other contractors are appointed and official community engagement commences.

Planning

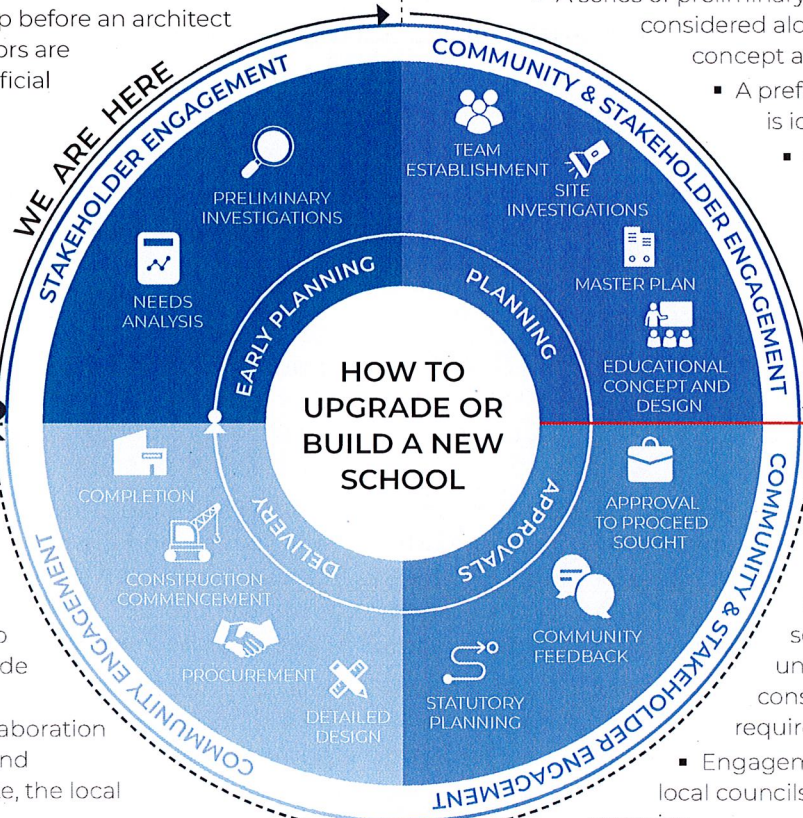
- Consultants such as architects and project managers are appointed.
- Investigation and review of site and development of master plan options.
- Master planning considers options for the general size, shape and form of buildings for a specific school site.
- A Project Reference Group (PRG) is established.
- Operational, educational and service delivery factors are understood and considered by the PRG.
 - A series of preliminary master plan options are considered along with the educational concept and design for the school.
 - A preferred concept design option is identified.
 - Once a preferred option is identified approval is needed in order to progress from planning through to project delivery.

Delivery

- The construction works program to deliver the upgrade to the school is developed in collaboration with the school and where appropriate, the local community.
- Ongoing consultation with Principal, staff and other school users.
- Throughout detailed design and construction updates are provided to the local community.

Approvals

- Workshops continue with school and local community to understand challenges and constraints and identify future requirements.
 - Engagement of technical specialists, local councils and other government agencies.
 - Statutory planning approval process.
- Opportunity for local community to view and provide feedback upon submission of the Development Application.
- Scope of work and concept design is further defined.



For more information contact:

School Infrastructure NSW
 Email: schoolinfrastructure@det.nsw.edu.au
 Phone: 1300 482 651
www.schoolinfrastructure.nsw.gov.au



Frequently asked questions

Will the relocated school have the same facilities currently at Lennox Head Public School?

The relocated school will have all the facilities to meet the curriculum set by NESA and meet the Educational Facilities, Standards and Guidelines (EFSG). All public schools have core facilities including a library, canteen, administration and staff facilities as standard, and required amounts of covered outdoor learning and play spaces.

The size allocation of these core facilities and the number of general learning spaces change depending on the number of students to be accommodated. This becomes the project scope. The project scope will be determined based on the assessment of service need in the School Community Group and subject to funding and site suitability.

How many students will the relocated school cater for?

A number of options for the number of students the relocated school will cater for will be developed and considered as part of the process. The scope of the new project, including the size of the school, will need to be determined based on consideration of the service need in the region and on the availability and suitability of land.

Is transportation considered as part of the assessment of the new school site?

Part of the process to determine suitability of a proposed site is consideration of the location in the context of the enrolment data and active travel options. A transport assessment will be conducted as part of this planning.

What will happen to the existing school site when LHPS relocates?

We are in the very early planning stages. The future of the current LHPS site will need to be determined when a new school project is confirmed, and in close consultation with key stakeholders.

For more information contact:

School Infrastructure NSW
Email: schoolinfrastructure@det.nsw.edu.au
Phone: 1300 482 651
www.schoolinfrastructure.nsw.gov.au

