

# Lennox Head Public School and Southern Cross Public School

Community update

May 2022

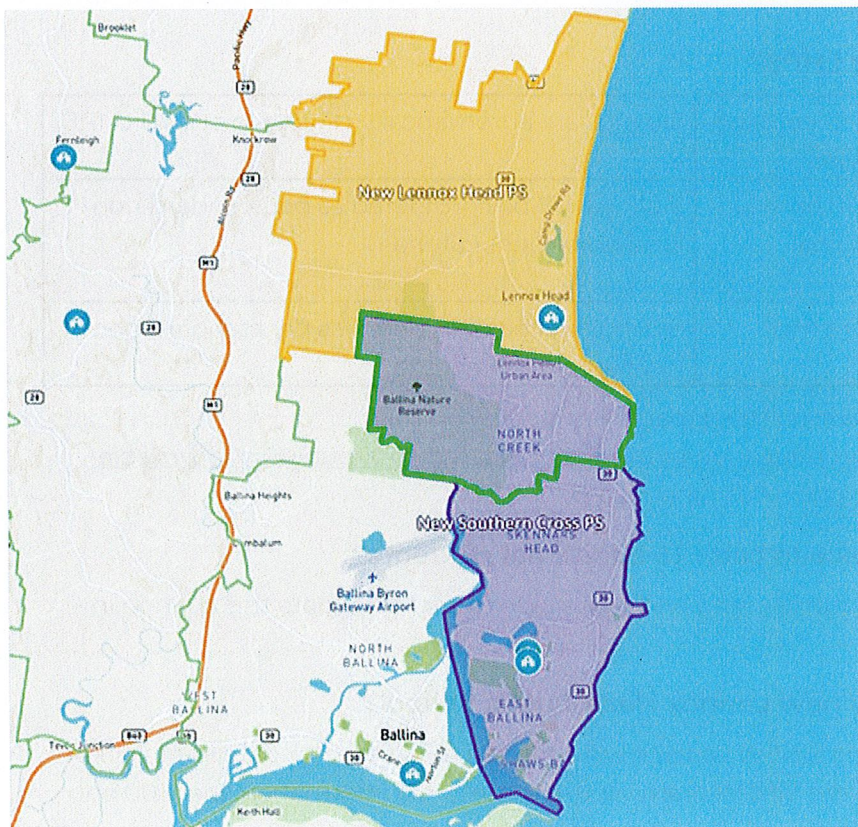
## Changes to local primary school intake areas

The intake areas for Lennox Head Public School (LHPS) and Southern Cross Public School (SCPS) have been adjusted to stabilise the growth of LHPS, while planning for a new Lennox Head Public School continues.


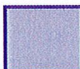

This change, which will take effect from Wednesday 4 May 2022, will ensure the local student population is balanced and proportional to each school's size and available resources.

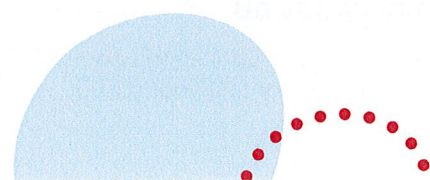
The map below provides an overview of the changes.

An interactive, zoomable map showing the intake area boundary changes will be available from Wednesday 4 May 2022 on the school finder website at [schoolfinder.education.nsw.gov.au](https://schoolfinder.education.nsw.gov.au)



## Legend

-  New Lennox Head Public School intake area
-  New Southern Cross Public School intake area
-  Area that will change from Lennox Head to Southern Cross intake





## Frequently asked questions

### Why are the intake area boundaries changing?

We are adjusting the intake area boundaries to balance enrolment numbers between the schools because there has been rapid growth in our local area and there is projected future growth as well. In fact, the number of government students residing in the current Lennox Head Public School (LHPS) intake area has increased from 327 in 2016 to 463 in 2021.

We need to manage the current site respectfully while we continue to use it and it is not possible to add any more temporary structures. Adjusting the local public school intake areas will stabilise the growth of LHPS while the new school is being planned.

### Will some of the demountables at LHPS be removed if there are less students at the school?

The demountables that are on-site at the moment are required cater to the number of children enrolled and classes that are running. The number of demountables required on-site will continue to be monitored based on the number of students enrolled at the school.

### My child was an out of area enrolment at LHPS – will they need to enrol at SCPS now?

No, children already accepted and enrolled at Lennox Head Public School will not need to move schools.

### What about siblings of students at LHPS?

If you were in-area when your older child enrolled, and remain within the original intake area	Siblings are automatically eligible to attend LHPS
If you were in area when your older child enrolled but have since decided to leave the original intake area	Siblings will be considered as per standard non-local enrolment criteria
If you were out-of-area when your older child enrolled	Siblings will be considered as per standard non-local enrolment criteria

Please visit this page for more information on the department's policy on this: [education.nsw.gov.au/content/dam/main-education/public-schools/going-to-a-public-school/media/documents/changes-to-the-enrolment-policy-for-parents.pdf](https://education.nsw.gov.au/content/dam/main-education/public-schools/going-to-a-public-school/media/documents/changes-to-the-enrolment-policy-for-parents.pdf)

### Does SCPS have sufficient play space to cater to additional students?

Yes, SCPS is on a large site and has enough learning and play space to accommodate this change in intake areas.

### How can I find out more about the new Lennox Head Public School?

The Lennox Head PS project page on the SINSW website will continue to have up-to-date information about the project. You can also contact the SINSW team via the community information line 1300 and email [schoolinfrastructure@det.nsw.edu.au](mailto:schoolinfrastructure@det.nsw.edu.au)

