

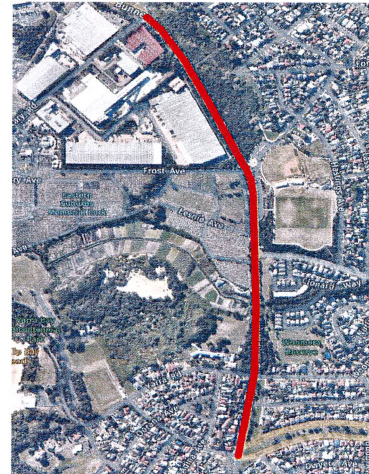



RANDWICK COUNCIL SUBMISSION 2


SUMMARY OF NOT SUPPORTED BUS ROUTE CHANGES

Route number	Proposed change	Description	Impact	Recommendation	From	To	Via	Current / Proposed
302	Route withdrawn	<ul style="list-style-type: none"> ☑ This route will no longer operate. ☑ Customers can use route 392 between Eastgardens and Redfern, route 343 along Gardeners Rd, and route 303 along Eastern Ave and Day Ave. 	Less frequent bus service with a loss of direct route from Eastlakes to Redfern via Kensington	NOT SUPPORTED - Council has concerns that these changes may result in less frequent bus services and seeks clarification from TfNSW regarding this detail	Eastgardens	Redfern	Kingsford	Current
314	Route withdrawn	<ul style="list-style-type: none"> ☑ This route will no longer operate. ☑ Customers can use route 370 between Coogee and Randwick, and new route 390X between Randwick and Bondi Junction. 	Discontinued, with alternatives made available	NOT SUPPORTED - due to the reduction in services to Coogee and Bondi Junction	Coogee	Bondi Junction	Randwick Junction	Current
316	Route withdrawn	<ul style="list-style-type: none"> ☑ This route will no longer operate. ☑ Customers can use route 397 between Eastgardens and Maroubra Junction, route 356 between Eastgardens and Bondi Junction, and route 390X between Randwick and Bondi Junction. 	<p>Loss of direct route from Bondi Junction to East Lakes via Coogee</p> <p>No bus routes along Garden St (partial). This link is mainly medium to high density residential.</p>	<p>NOT SUPPORTED as it appears to reduce services to Garden St residential catchment. There appears to be a decrease in service and direct routes.</p> 	Eastgardens	Bondi Junction	Randwick Junction	Current
353	Route withdrawn	<ul style="list-style-type: none"> ☑ This route will no longer operate. ☑ Customers can use new route 350 between Eastgardens and Bondi Junction, and new route 375 between Eastgardens, Maroubra Beach and South Coogee. 	No bus routes along Fitzgerald Ave.	<p>NOT SUPPORTED as this reduces the servicing of large area of public housing. There will be reduced service</p> 	Eastgardens	Bondi Junction	Coogee	Current
372	Route withdrawn	<ul style="list-style-type: none"> ☑ This route will no longer operate. ☑ Customers can use route 370 between Coogee and Randwick, route 374 between Coogee and Central, and line L2 between Randwick and Central. 	Discontinued resulting in loss of frequency and direct routes	NOT SUPPORTED as this reduces the services and direct routes within Coogee, Randwick and Central	Coogee	Central Railway Square	Royal Randwick	Current

373	Route withdrawn	<ul style="list-style-type: none"> ☒ This route will no longer operate. ☒ Customers can use route 370 between Coogee and Kensington, route 374 between Coogee and Central, line L2 between Randwick and Circular Quay, and route 396 between Kensington and Circular Quay. ☒ Express route 373X will maintain a direct service to the Sydney CBD during peak periods. ☒ Overnight services will operate as route 373N. 	Discontinued, with loss of direct route and frequency	<p>NOT SUPPORTED - Council is concerned over the potential loss in frequency of service and loss of direct route from Coogee to Circular Quay caused by the withdrawal of this service.</p> <p>Express route 373X is supported</p>	Coogee	City Circular Quay	Belmore Rd	Current
376	Route withdrawn	<ul style="list-style-type: none"> ☒ This route will no longer operate. ☒ Customers can use route 375 between Maroubra Beach and Randwick, route 350 through South Coogee, and line L2 between Randwick and Central. 	Discontinued, with alternatives made available	<p>NOT SUPPORTED - Council concerned by withdrawal of route which may lead to decreased service and loss of direct route from Maroubra to Central</p>	Maroubra Beach	Central Railway Square	Randwick	Current
377	Route withdrawn	<ul style="list-style-type: none"> ☒ This route will no longer operate. ☒ Customers can use route 375 between Maroubra Beach and Randwick, route 350 through South Coogee, and line L2 between Randwick and Circular Quay. ☒ Express route 377X will maintain a direct service to the Sydney CBD during peak periods. 	Discontinued, with alternatives made available	<p>NOT SUPPORTED - Council concerned by withdrawal of route which may lead to decreased service and loss of direct route from Maroubra to Circular Quay</p>	Maourbra Beach	City Circular Quay	Randwick	Current
391	Route withdrawn	<ul style="list-style-type: none"> ☒ This route will no longer operate. ☒ Customers can use route 390X between La Perouse and Little Bay, route 392 between Little Bay and UNSW, route 396 between Kingsford and Moore Park, line L3 between Kingsford and Central, and route 339 through Surry Hills. 	<p>No bus routes along Bunnerong Rd from Anzac Pde and Military Rd.</p> <p>Route runs along industrial zones and grave site with very few residential properties on the south of the link.</p>	<p>NOT SUPPORTED - Council concerned about the proposed withdrawal leading to missing link along Bunnerong Rd.</p> <p>Also concerns over lower frequency of service and loss of direct route from La Perouse to Central</p>	La Perouse	Central Railway Square	Eastgardens	Current



392 Frequent	Route changes	<ul style="list-style-type: none"> ☑ This route will be modified to operate between Little Bay and Redfern, operating direct via Little Bay Rd instead of Mirrabooka Cres, and no longer operating between UNSW and Circular Quay. ☑ Customers can use line L3 or route 396 between Kingsford and Circular Quay. ☑ This route will be upgraded and become a Frequent route with services at least every 10 minutes during the day and at least every 20 minutes early morning and evening, seven days a week. ☑ Express route 392X will maintain a direct service to the Sydney CBD during peak periods. 	<p>No bus routes along Mirrabooka Cres</p> <p>Modification to route stops, with alternatives provided</p> <p>Increased frequency</p>	<p>NOT SUPPORTED - Council does not support the loss of service along Mirrabooka Cres.</p> <p>Council notes the alternative routes seem appropriate for the loss in service caused by the modification.</p> <p>Council supports the increase in frequency of the route.</p> <p>End destination as redfern is not supported</p> 	Little Bay	City Circular Quay	Eastgardens	Current
393	Route withdrawn	<ul style="list-style-type: none"> ☑ This route will no longer operate. ☑ Customers can use route 390X between La Perouse and UNSW, route 396 between Maroubra Junction and Moore Park, line L3 between Juniors Kingsford and Central, and route 374 along Cleveland St. ☑ Express route 394X will provide additional capacity during peak periods to Kingsford and the Sydney CBD. 	Discontinued, with disjointed alternative routes.	NOT SUPPORTED - the withdrawal of bus 393 means limiting direct and consistent link between La Perouse Central although it acknowledges alternative options and 394X as additional express service	Little Bay	Central Railway Square	Maroubra & Kingsford	Current
394	Route withdrawn	<ul style="list-style-type: none"> ☑ This route will no longer operate. ☑ Customers can use route 390X between La Perouse and UNSW, route 396 between Maroubra Junction and Circular Quay, and line L3 between Juniors Kingsford and Circular Quay. ☑ Express route 394X will maintain a direct service to the Sydney CBD during peak periods. 	Discontinued, with disjointed alternative routes.	<p>NOT SUPPORTED - Council concerned about the withdrawal of bus 394 contributing to limiting direct and consistent link between La Perouse Circular Quay.</p> <p>Council supportive of 394X as additional express service</p>	City Circular Quay	La Perouse	Maroubra & Kingsford	Current
395	Route withdrawn	<ul style="list-style-type: none"> ☑ This route will no longer operate. ☑ Customers can use route 396 between Maroubra Beach and Moore Park, line L3 between Juniors Kingsford and Central, and route 374 along Cleveland St. ☑ Express route 396X will provide additional capacity during peak periods to Kingsford and the Sydney CBD. 	Discontinued, with alternatives made available	NOT SUPPORTED - Council concerned about the decrease in frequency and indirect service resulting from the loss of service.	Maroubra Beach	Central Railway Square	Kensington	Current
397	Route changes	<ul style="list-style-type: none"> ☑ This route will be modified to operate between South Maroubra and Eastgardens, no longer operating between Maroubra Junction and Circular Quay. ☑ Customers can use route 396 between Maroubra Junction and Circular Quay. ☑ Service frequency will be changed to every 40 minutes. ☑ Express route 397X will maintain a direct service to the Sydney CBD during peak periods. 	<p>Modification to route stops, with alternatives provided</p> <p>Decreased frequency</p>	NOT SUPPORTED - due to the loss of service between Maroubra Beach to Circular Quay, but acknowledges alternative services are available.	South Maroubra	City Circular Quay	Kensington	Current

399	Route changes	<p><input checked="" type="checkbox"/> This route will be modified to operate between Little Bay and UNSW, no longer operating between UNSW and Circular Quay.</p> <p><input checked="" type="checkbox"/> Customers can use route 396 between Maroubra Junction and Circular Quay, and line L3 between Juniors Kingsford and Circular Quay.</p> <p><input checked="" type="checkbox"/> Additional services will operate throughout the week. Services will operate every 10 minutes during peak periods, every 20 minutes during the day, and every 30 minutes early morning and evening, seven days a week.</p> <p><input checked="" type="checkbox"/> Selected route 399 trips will continue to and from the Sydney CBD as express route 394X, maintaining a direct service during peak periods.</p>	<p>No bus routes along Raglan St, Bay Pde and Howe St. Mainly residential streets with some local businesses and restaurants.</p> <p>Modified route to miss links between UNSW and Circular Quay</p>	<p>NOT SUPPORTED as route change omits the link to residents along Raglan St, Bay Pde and Howe St.</p> <p>Noted - the loss in operation between UNSW and Circular Quay with alternative services available.</p> <p>Support the increase in services and improved times.</p> 	La Perouse	City Circular Quay	Malabar Beach & Maroubra Junction	Current
400	Route withdrawn	<p><input checked="" type="checkbox"/> This route will no longer operate.</p> <p><input checked="" type="checkbox"/> Customers can use route 350 between Sydney Airport and Bondi Junction, route 392 between Eastgardens and UNSW, and route 390X between Maroubra Junction and Bondi Junction.</p>	Modification to route stops, with alternatives provided	NOT SUPPORTED as the loss of the link means there are very limited buses between Botany to Kingsford to Bondi Junction along similar route.	Bondi Junction	Sydney Airport	Eastgardens	Current
400N	Route withdrawn	<p><input checked="" type="checkbox"/> This route will no longer operate.</p> <p><input checked="" type="checkbox"/> Customers can use new route 350N between Eastgardens and Bondi Junction, route 392N between Eastgardens and UNSW, and route 390X between Maroubra Junction and Bondi Junction.</p>	Withdrawal of direct routes which will cause commuter inconvenience	NOT SUPPORTED as the withdrawal of route is not replaced with direct alternatives.	Bondi Junction	Eastgardens	Randick	Current

Document tendered by
 Cr Parker
 Received by
 Emily Treacy
 Date: 2 / 5 / 22
 Resolved to publish Yes / No