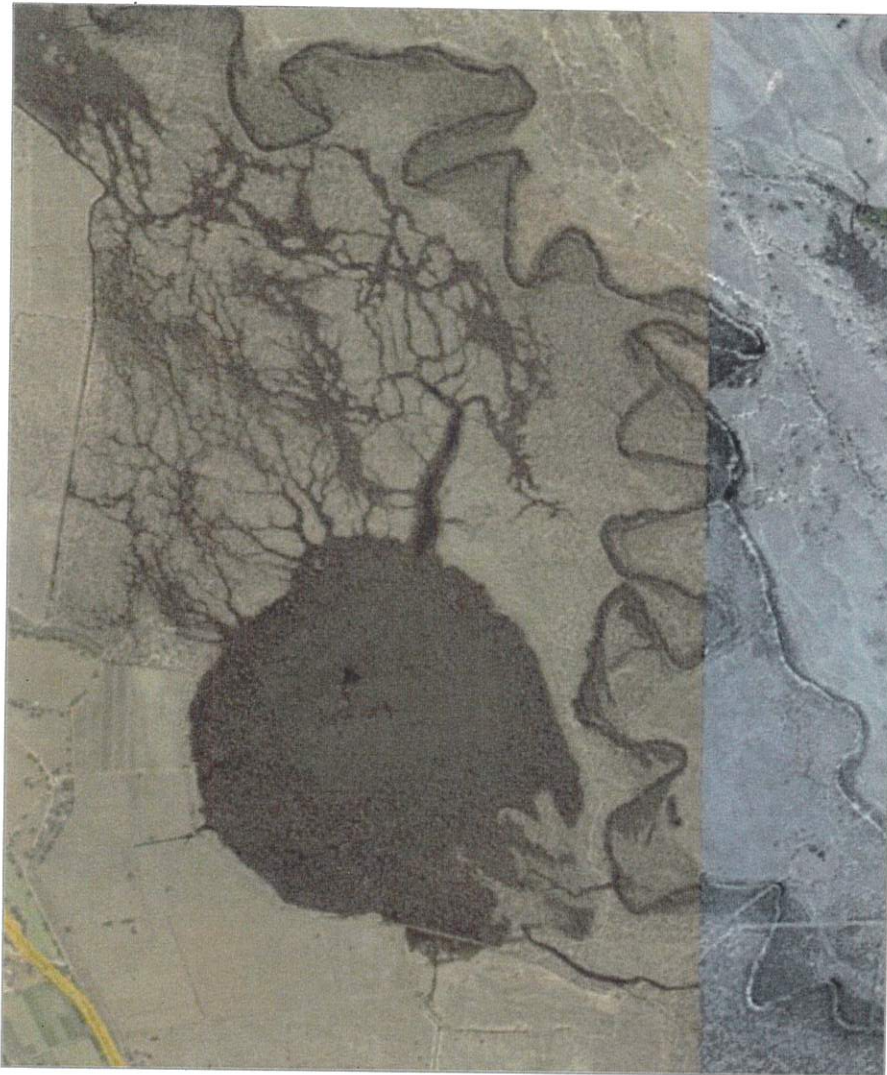
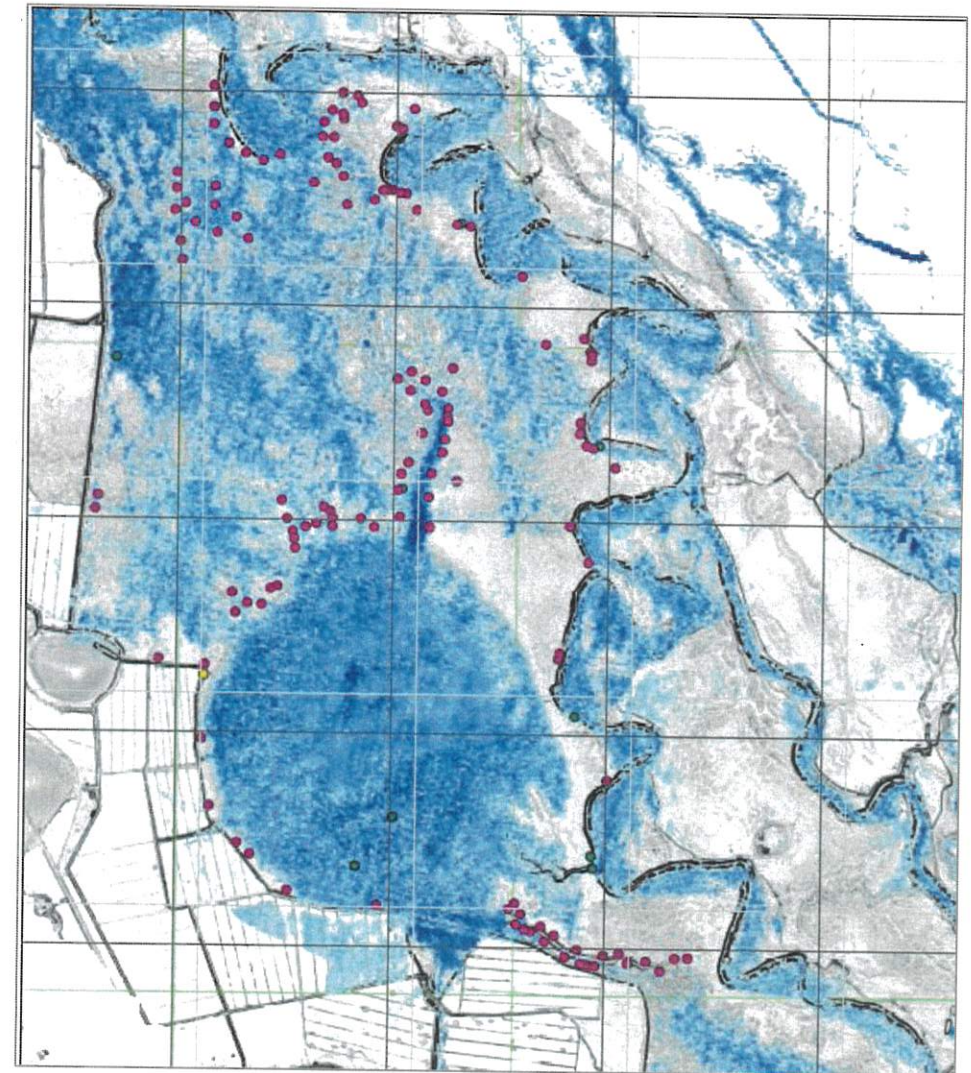


## Barapa Barapa villages of the Pollack – December 2020



*Google image of the Pollack during 2010 flood event*



*Recorded Aboriginal earth mound sites over 2010 flood extent satellite image*

**Residential pattern follows seasonal flows: deep flowing channels during flood; still, shallow, warm water lagoons after the recession.**



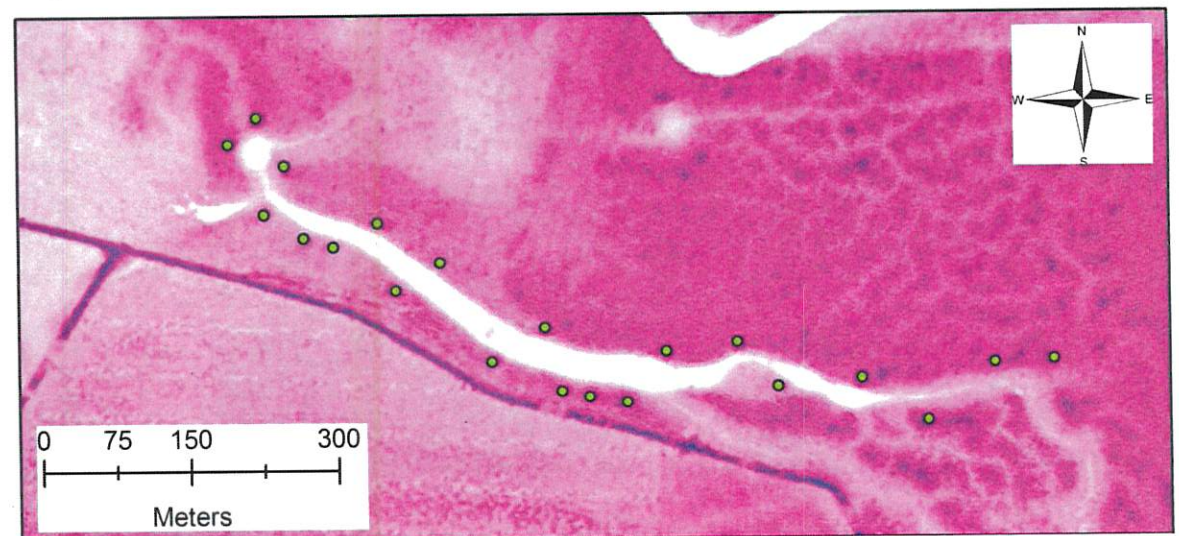


*Blandowski C1850*

- Family groups in small village societies
- 20-30 dwellings arranged in clusters
- Situated near reliable, valued wetland resources
- Construction of weirs, dams and ponds
- Small day camps or large thatched houses



*Pollack Southern Flood Runner (photo above, LiDAR map of indicating mounds below)*





*Blandowski C1850: harvesting and processing wetland resources*



*Pollack lagoon during 2016/17 recession*





**Blandowski C1850: canoe making and (right) a scar tree on the banks of the Barbers Creek adjacent to the Pollack**