



NORTH SYDNEY

Largest Urban Motorway

Local connections

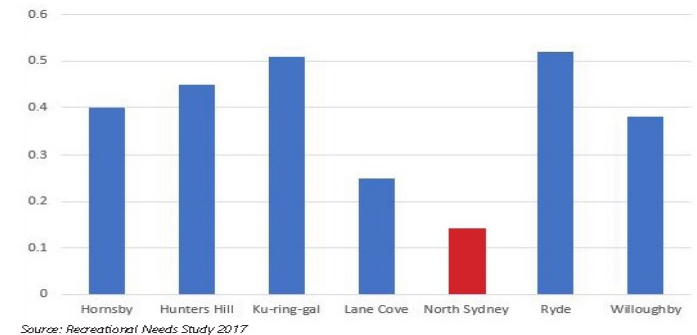
Harbour connection

Improving Public Transport

Growing Population

Limited Green Space

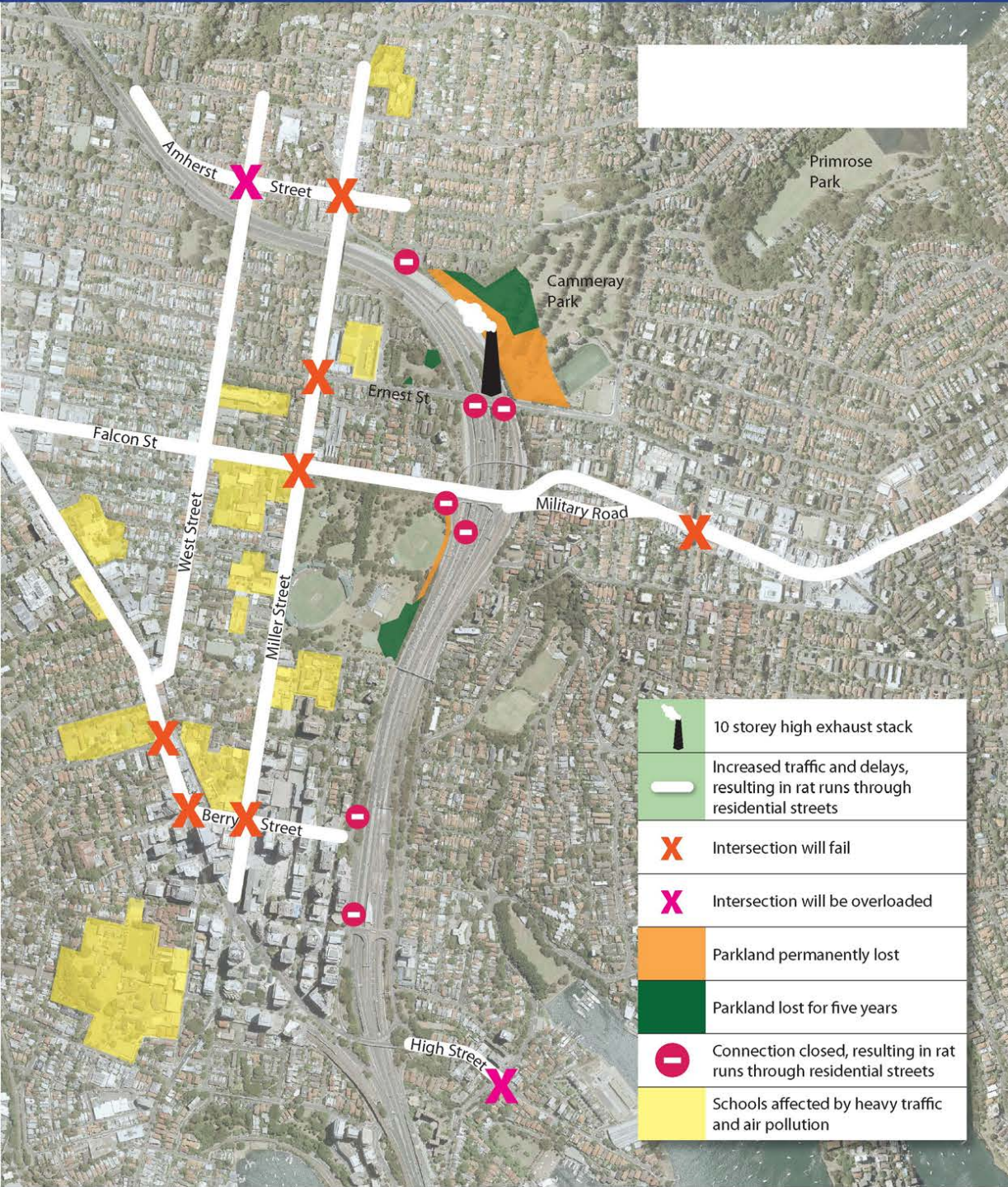
22 Schools (>10,000 kids)



PROPOSED TUNNELS & MOTORWAY EXPANSION
NSW UPPER HOUSE INQUIRY

Bay Precinct(Cammeray)
Paul Walter, Chair
13 September 2021

Recreation space per person by LGA



- Funnel new traffic into CBD
- Remove parkland
- Remove local connections
- Disadvantage pedestrians
- Walking to school (10,000 children)
- Disturb contaminated land
- Aboriginal Heritage

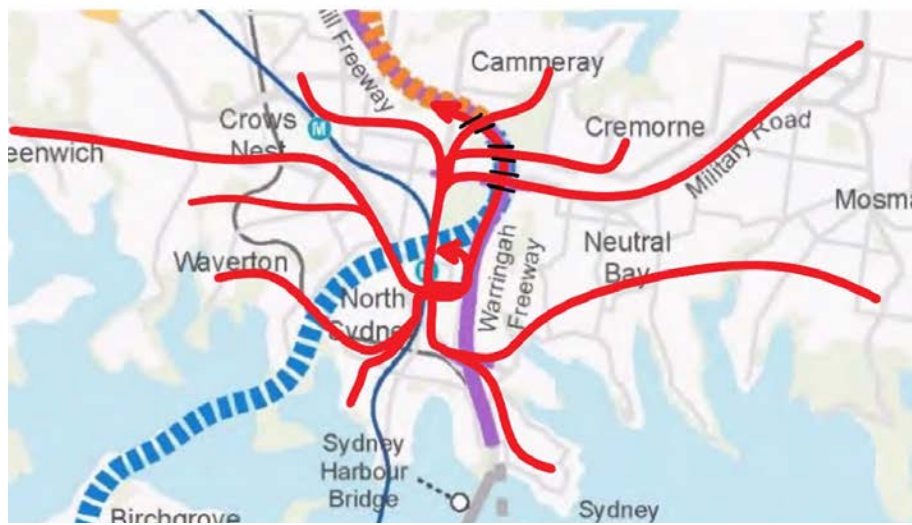
INTERSECTION

EXTRA DELAY

Amherst Street/West Street
 Amherst Street/Miller Street
 Miller Street/Ernest Street
 Military Road/Ben Boyd Rd
 Falcon Street/Merlin Street
 Berry Street/Walker Street

+80%
 +81%
 +76%
 +327%
 +46%
 +66%

Data source: WHT&WFU EIS p. 9-23 to 24

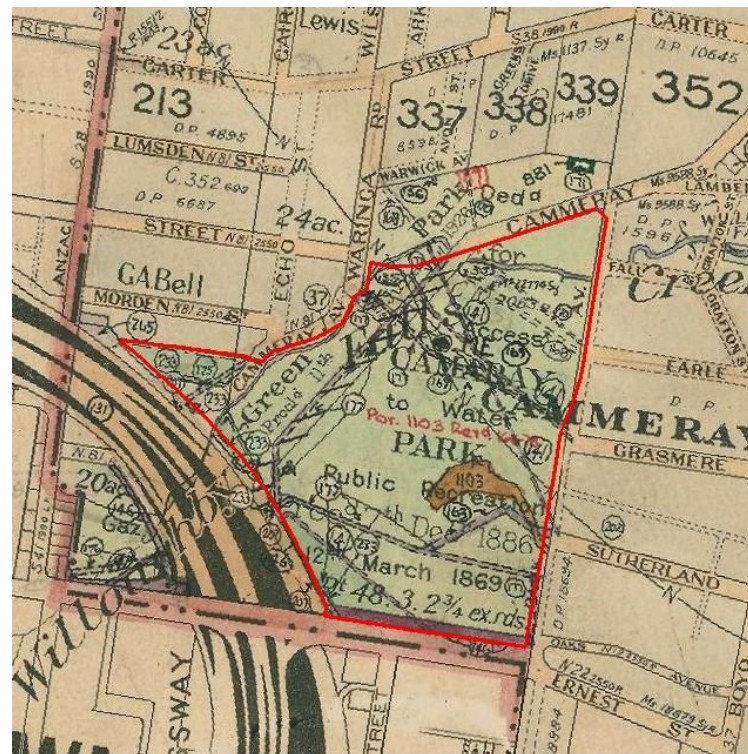


Increase Traffic in Berry Street at new Metro Station

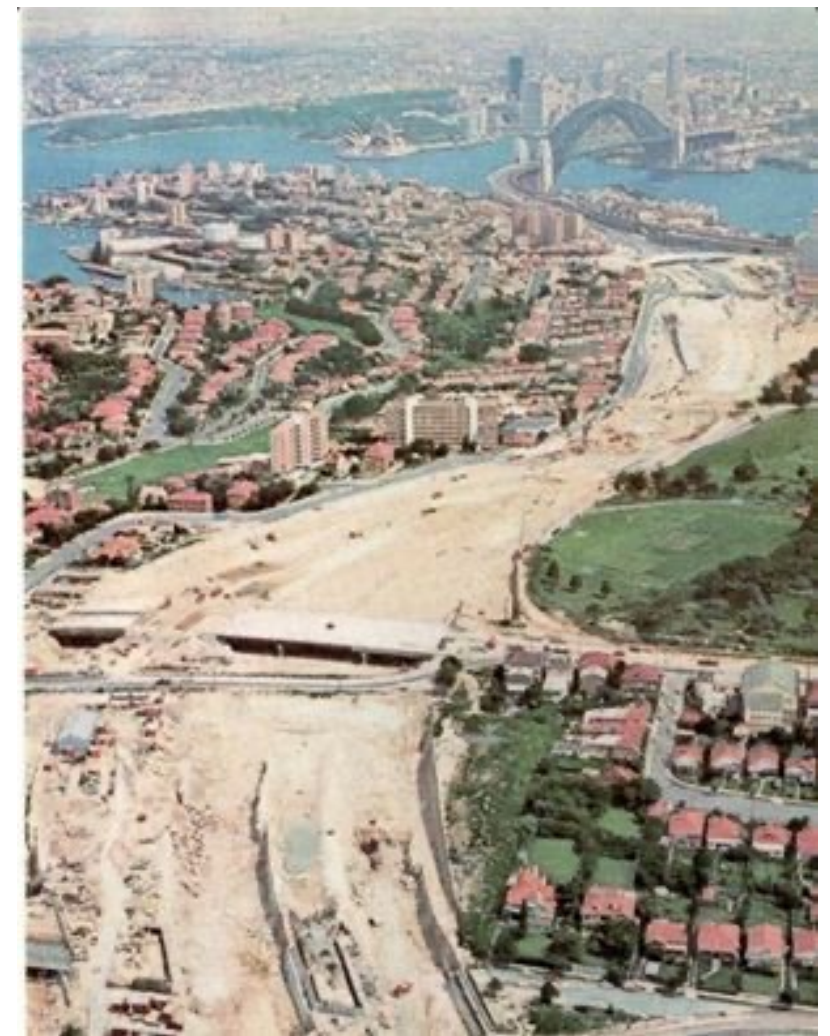
Funnel new traffic into the CBD
 Impact Victoria Cross Metro
 Pedestrians vs. cars
 Buses vs. cars
 School children vs cars



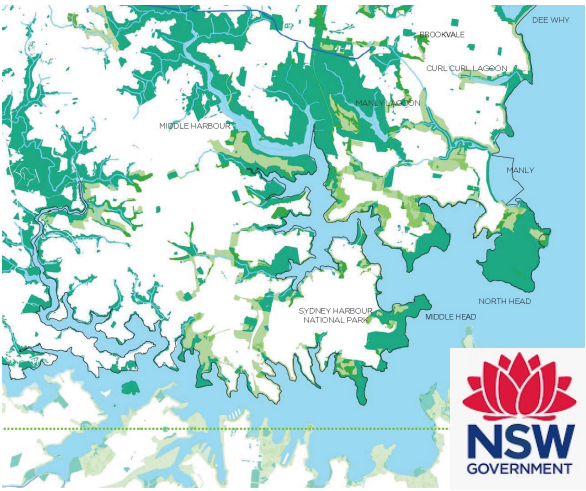
1887 – Reserved
 For Public Park
 For Access to water



1965 – Motorway
 Splits public parks
 Reserved Access to water

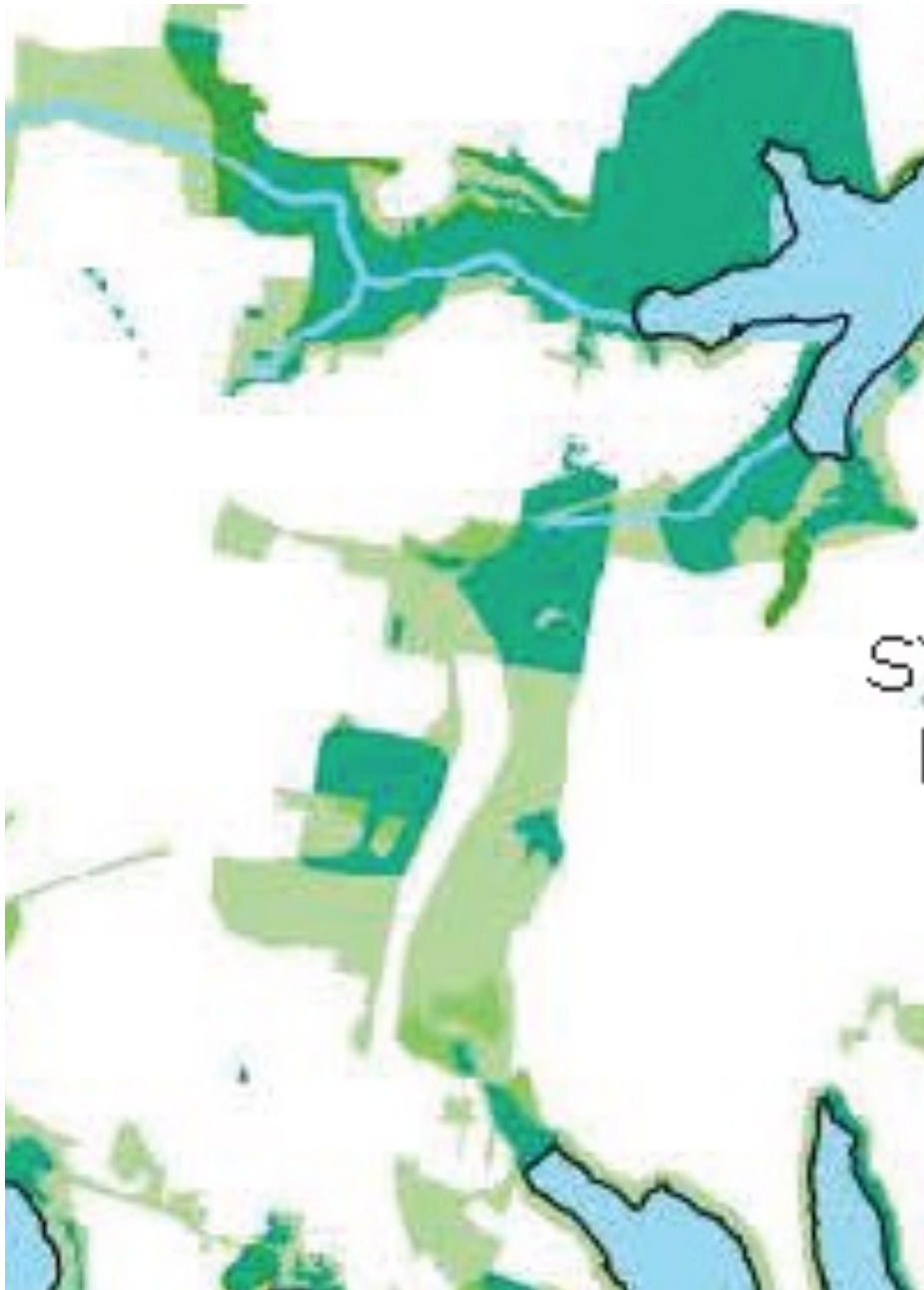


1965 – Bygone Era?

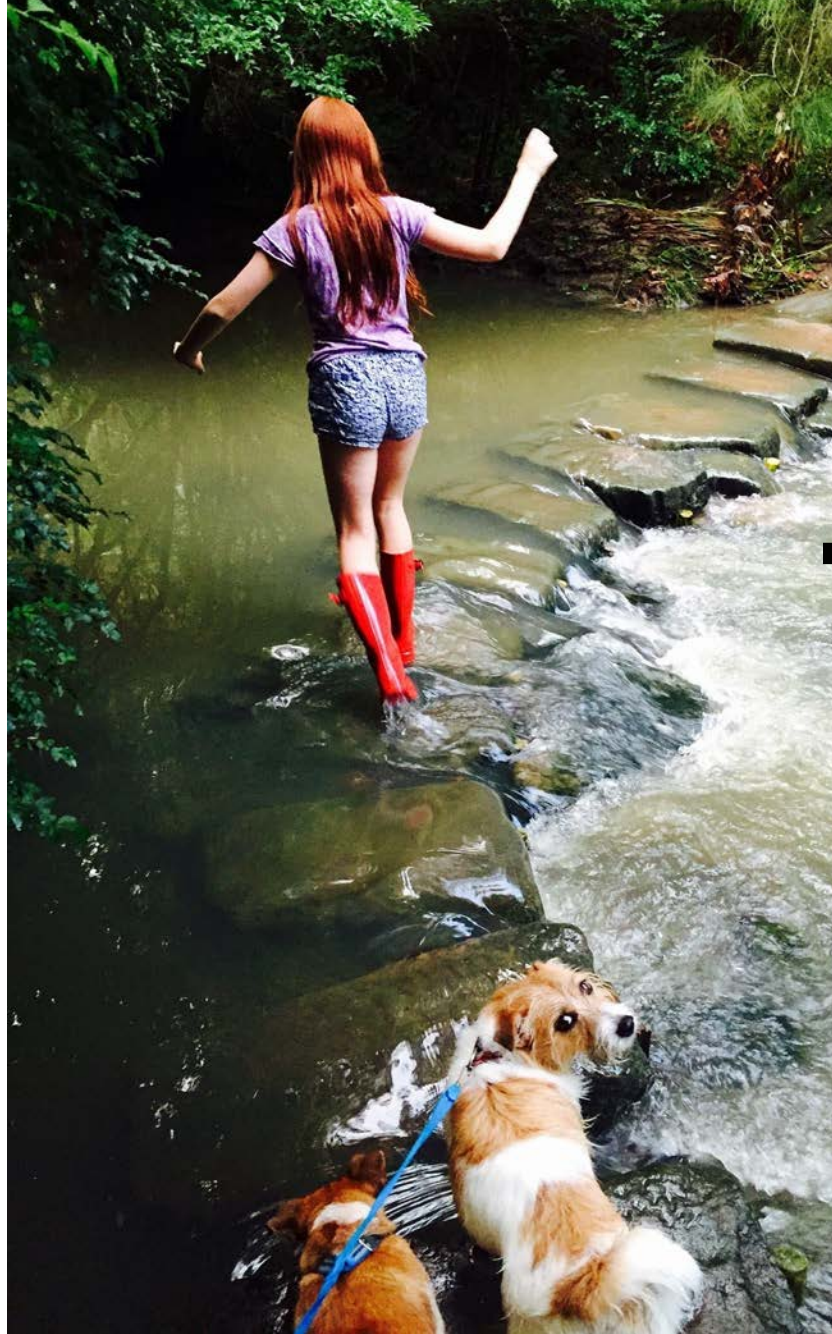


SYDNEY GREEN GRID

- GoNSW Policy
- Connect greenspace
- Protect Ecology
- Improve livability



Green Space & Warringah Expressway

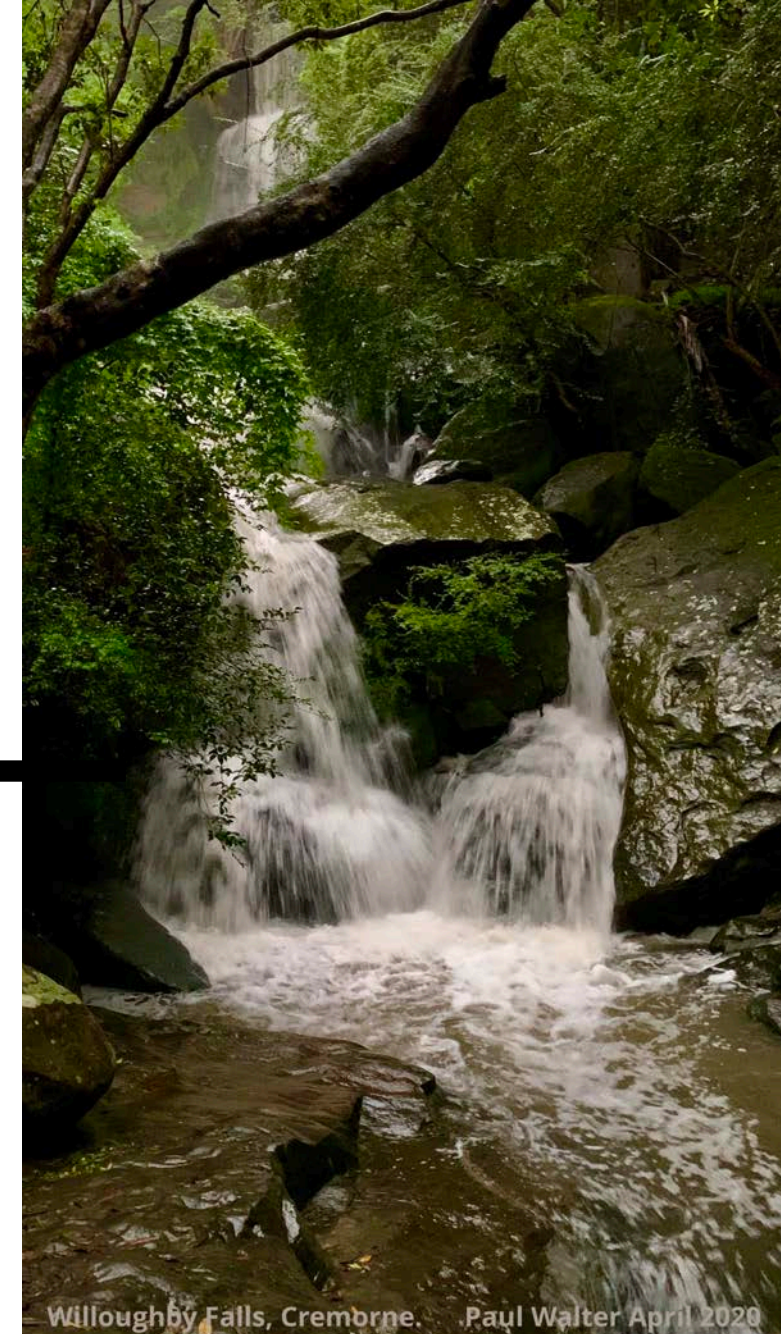


Flatrock Creek (Tunks Park)

SYDNEY GREEN GRID?
 Disconnect greenspace
 Contaminated fill into marine system
 Disconnect green space
 Air Pollution



SLIDE 6



Willoughby Falls, Cremorne. Paul Walter April 2020

Willoughby Falls (Primrose Park)



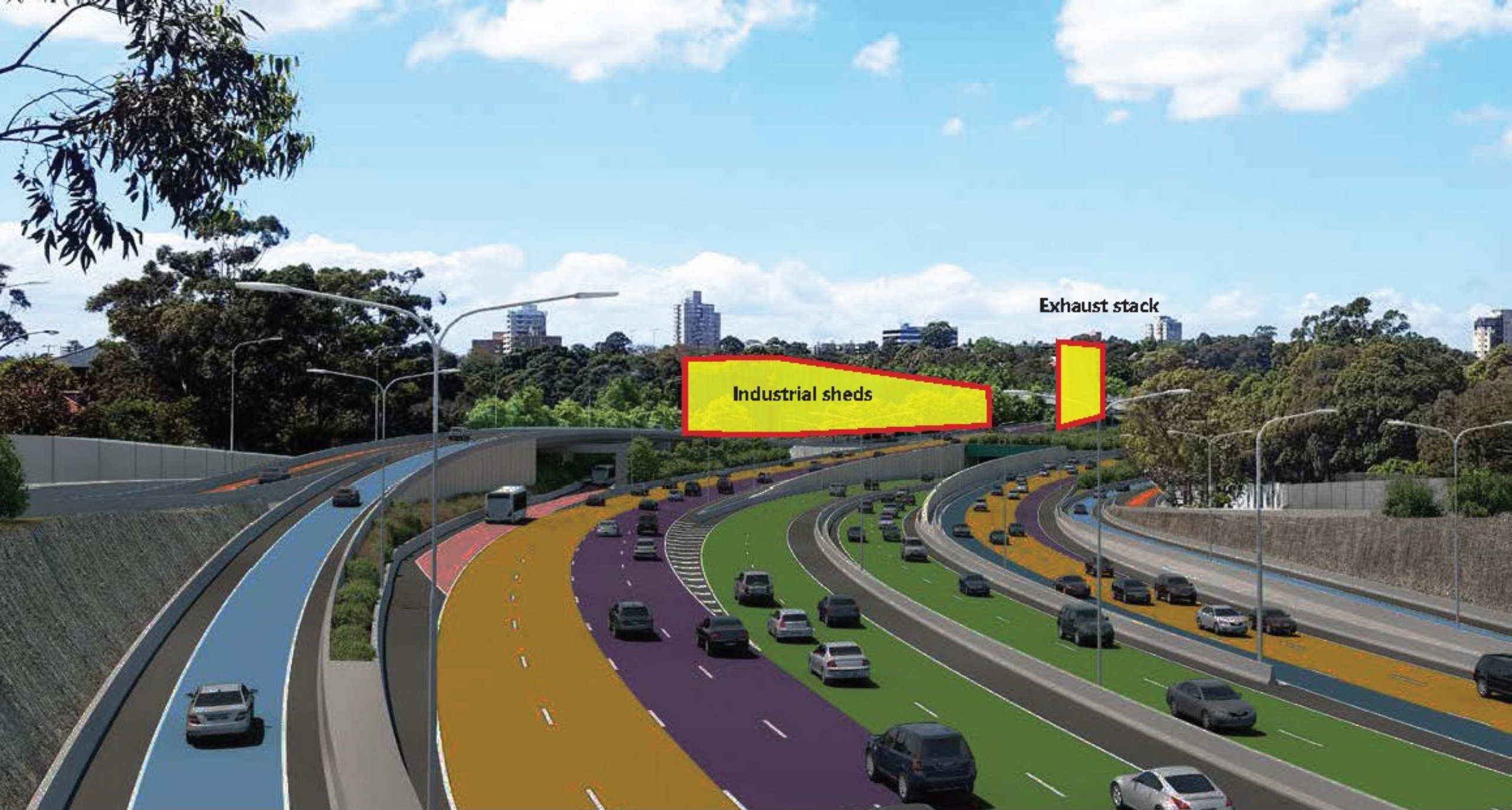
POSSIBLE STRATEGIES

- Connected Green Space
- Ridge-top green space
- Motorway in deep cut
- Industrial uses on industrial land (Artarmon)
- Cut-and-cover
- Replace green space taken for widening



POSSIBLE STRATEGIES

- Connect Green Space
- Ridge-top green space
- Motorway in deep cut
- Major Cut & Cover zone?



Industrial sheds

Exhaust stack

New Exhaust Stack
Height = 8 Stories

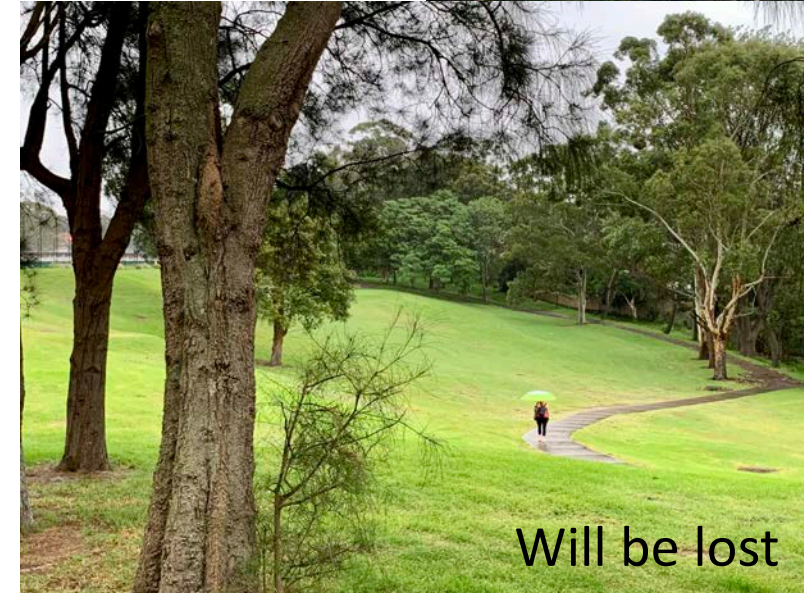
New Industrial Sheds replace Parkland
Height = 4 stories
Area = 3x soccer fields

Cammeray Park
& Golf Course

Ernest Street

Marlin Street





Replace parkland with this:



1,500m² of parkland lost

*1,500m² of industrial in Artarmon = \$75M or 0.4% of project cost

SLIDE 12



THE PROPOSAL

- Remove Green Space
- Disconnect green grid
- Air pollution
- Water pollution
- Discourage walking
- No mitigation!



Public Investment \$20B?

- Opportunity cost
- Integrated evaluation
- Changing times
- Sustainability

Test should be:

- Improve villages & towns
- Connect parkland
- Improve local connections
- Support pedestrians
- Walking to school
- Reduce pollution
- Protect Aboriginal Heritage