

Our people

Organisational structure

The department

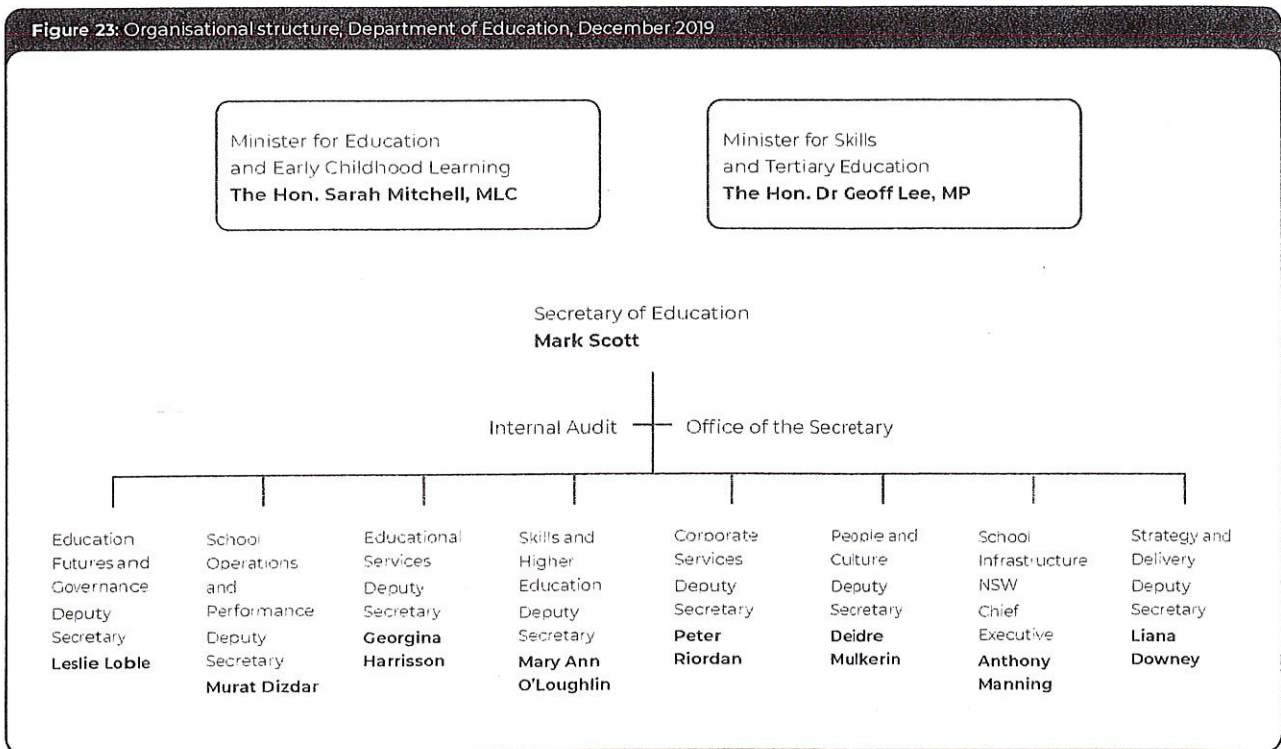
As at 1 July 2019, machinery-of-government changes resulted in the following changes to the department:

- Aboriginal Affairs transferred to the NSW Department of Premier and Cabinet
- vocational and skills functions transferred from the NSW Department of Industry.

As a result, this annual report includes detail relevant to Aboriginal Affairs up to 30 June 2019 only. This annual report also includes detail relevant to Skills and Higher Education for the period 1 July 2019 to 31 December 2019.

As at the end of December 2019, the department is structured as represented in this chart. For a more detailed version, see page 110 of this report. The latest organisational chart is available on the NSW Department of Education website.

Figure 23: Organisational structure, Department of Education, December 2019



Document tendered by
 Hon Daniel Mookhey MLC
 Received by
 A. Chung
 Date: 03/03/2021
 Resolved to publish Yes / No