

The Chair asked:

Ms. West, do you have any idea what was burn in your Local Government Area?

In the PMHC area we have the following data:

**Burnt Indicative Core Koala Habitat April 2019 (draft)**

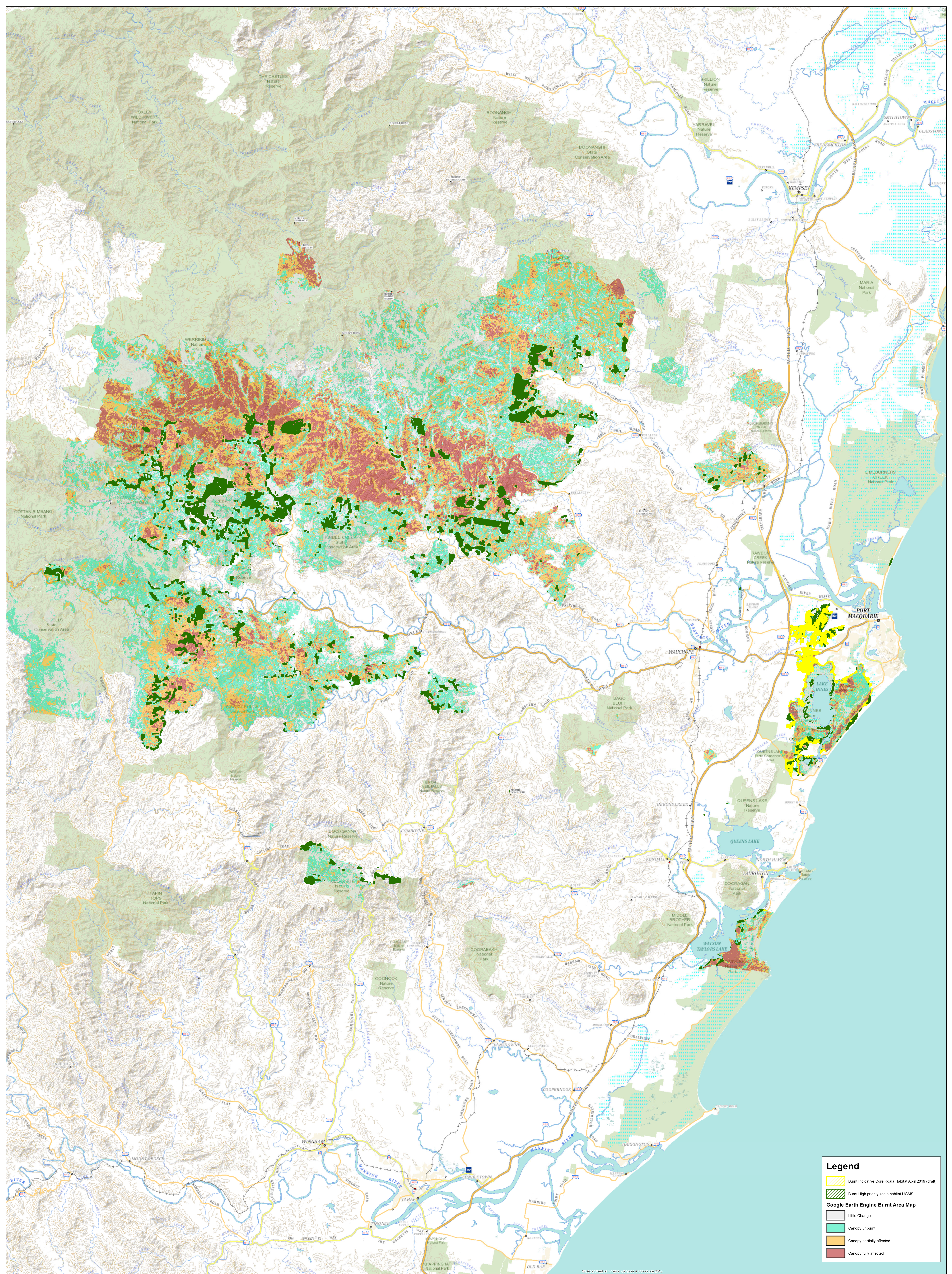
- Indicative Core Koala Habitat April 2019 (draft) total area - **6 680 Ha**
- Total burnt area - **1 005.7 Ha**
- Percentage of burnt Indicative Core Koala Habitat April 2019 (draft) land **15.1%**
- Little Change - 178.5 Ha or 17.7% of total burnt Indicative Core Koala Habitat April 2019 (draft) Land.
- Canopy Unburnt 304.7 Ha or 30.3%
- Canopy partially affected 347.7 Ha or 34.6%
- Canopy fully affected 174.7 Ha or 17.4%

**Burnt High priority koala habitat UGMS**


- High priority koala habitat UGMS total area - **24 858.8 Ha**
- Total burnt area - **7 295.6 Ha**
- Percentage of burnt High priority koala habitat UGMS **29.3%**
- Little Change **1 524.9 Ha** or **20.9%** of total burnt High priority koala habitat (UGMS) land.
- Canopy Unburnt **2 434.3 Ha** or **33.4%**
- Canopy partially affected **2 427.6 Ha** or **33.3%**
- Canopy fully affected **908.8 Ha** or **12.5%**


There is also an accompanying PDF map that visually represents this data set.







**Legend**


 Burnt Indicative Core Koala Habitat April 2019 (draft)


 Burnt High priority koala habitat UGMS

**Google Earth Engine Burnt Area Map**

 Little Change

 Canopy unburnt

 Canopy partially affected

 Canopy fully affected