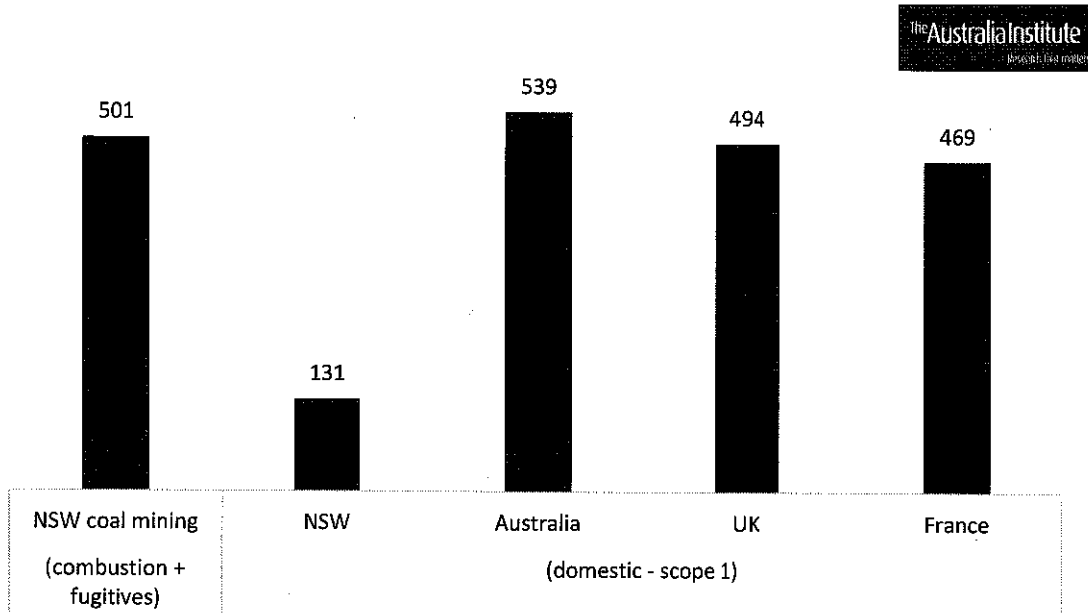


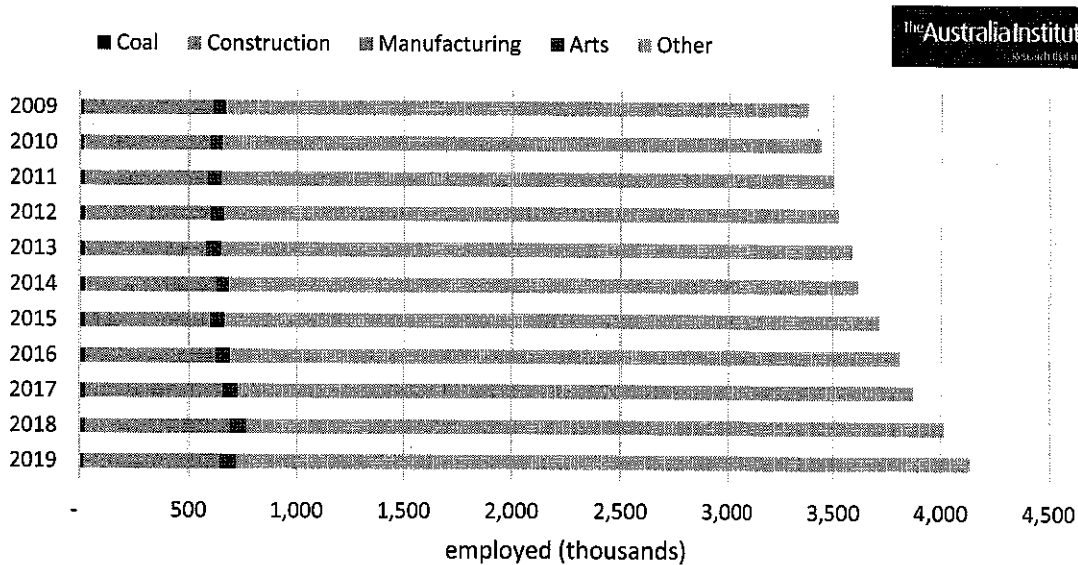
Figure 1: NSW coal mining emissions in context (Mt CO₂e)



Source: TAI calculations using govt sources, IPCC emission factors.

[Handwritten signature]

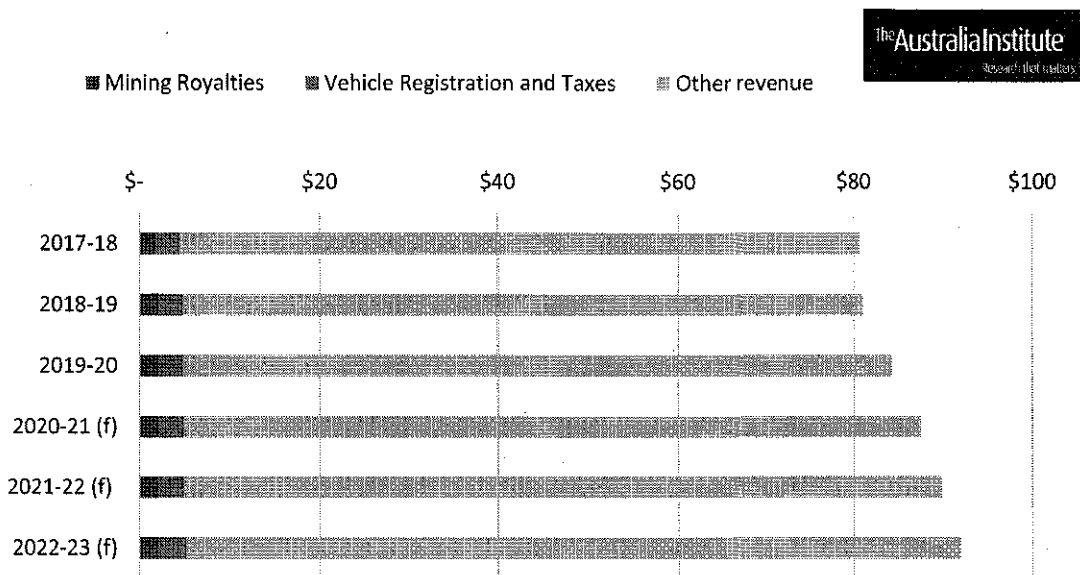
Figure 2: NSW employment by industry



Source: ABS (2019) 6291.0.55.003 - EQ06 - Employed persons by Industry group of main job (ANZSIC)
<https://www.abs.gov.au/AUSSTATS/abs@.nsf/DetailsPage/6291.0.55.003Aug%202019>

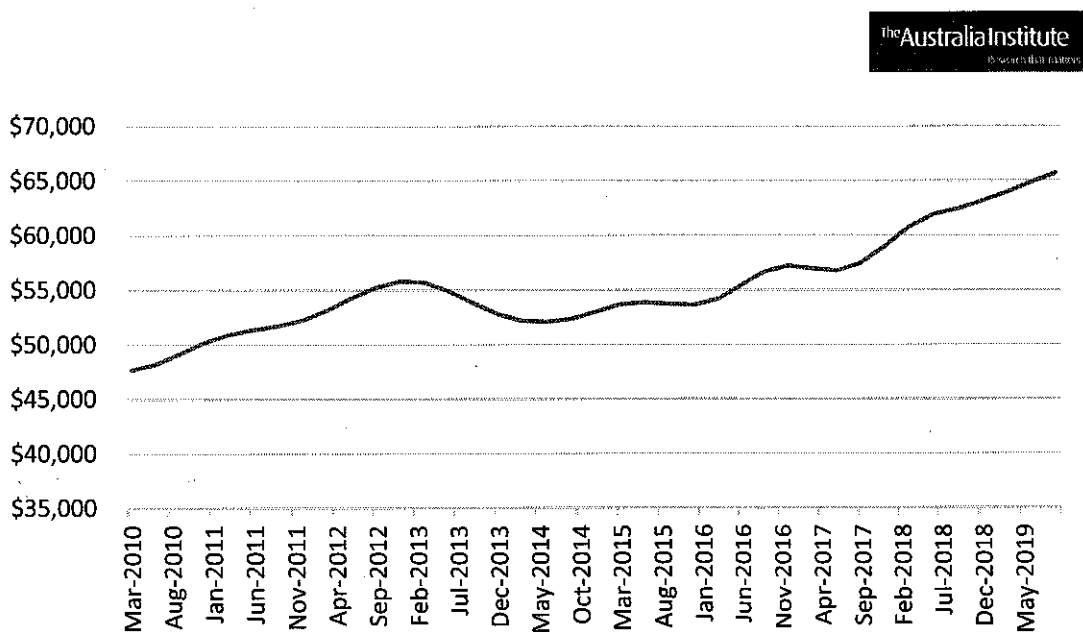
document rendered by
 MR TOM SWANN
 Received by
 TAYLAN CAUCHI
 Date: 6/2/20
 Resolved to publish: Yes

Figure 3: Selected NSW Budget Revenues (\$ billion)



Source: NSW Government (2019) Budget paper 1, Revenue,

Figure 4: NSW Business investment



Source: quarterly figures presented as year to date. ABS (2019) 5206.0 - Australian National Accounts: National Income, Expenditure and Product, Sept 2019 - Trend