



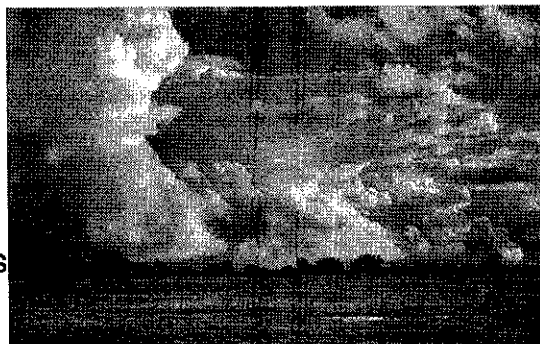
Home (<https://www.midcoast.nsw.gov.au/Home>) / News Library (<https://www.midcoast.nsw.gov.au/News-Media>) / MidCoast Council declares climate emergency

MidCoast Council declares climate emergency

Document tendered by
 MS DIANNE MONTAGUE
 Received by
 MONICA LOFTUS
 Date: 6/2/20
 Resolved to publish Yes / No

Published on 30 October 2019

MidCoast Council has declared a climate emergency and is calling on other levels of government to take clear steps to avert a climate crisis.



The declaration recognises Council's commitment to mitigating the impacts of climate change over a number of years.

"We join with 1,143 world-wide jurisdictions to declare a climate emergency, and we are calling on the NSW and Federal Governments to work in a bipartisan manner to make clear, effective and unambiguous steps to avert a climate crisis in NSW and Australia," Mayor David West said.

Council has recognised the imperative need to plan for the unavoidable impacts of climate change, especially the risk of inundation of low-lying areas, accelerated coastal erosion, the reduction in average annual

rainfall, stream flow and water supply. As a result Council is developing a risk-based Climate Change Policy and Action Plan.

The policy and action plan will have a dual approach – to mitigate by managing and reducing greenhouse gas emissions from Council's operations and activities; and to adapt Council practices and activities to reduce the impact on public and private infrastructure, water supply, natural systems and communities.

There are many actions Council has already undertaken to mitigate climate change, including the monitoring of water and energy consumption and carbon emissions, energy audits and management plans for major facilities, solar panels on public buildings, street lighting retrofits, carbon sequestration (revegetation projects) and the development of numerous strategies that address climate change.

“Our commitment to developing a Climate Change Policy, and our declaration of a climate emergency formalises our response to climate change and sends a clear message to our community that we take this issue extremely seriously,” Cr West said.

“We will be involving the community as we move forward in the development of our action plan and strategy as ultimately the decisions to be made are difficult, complex and have financial implications both short and long term.”

Tagged as:

Announcements

Environment

Gloucester Shire Region

Great Lakes Region

Manning Region

Media Releases

MidCoast Council

Water carted 24/7

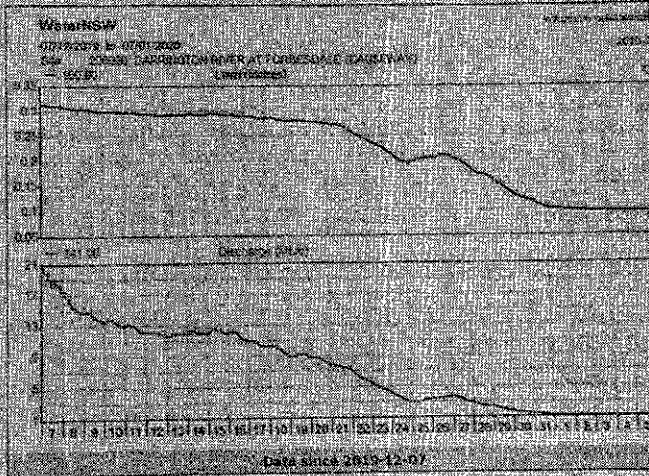
CONTINUED from page 1
...in some river flow that we can use. We will exceed from the Harrington river and reduce carting where we can, however until rainfall occurs we will need to keep carting water to meet demand.

As the usage in Gloucester has been fairly consistent and in line with the level four water restrictions target, council hasn't needed to elevate the town to level five emergency.

Whilst we haven't gone to level five we have relocated the water carters to using sources other than the Gloucester system and we have also allowed the car wash to operate on 50 per cent of their normal usage in the Gloucester system is further reduced," Mr Scott said.

Staying at level four recognises what the community has done to minimise water usage already. We will be wanting to confirm the subsidy arrangement before making a decision on further restrictions.

Council estimates that overall carting is a bit higher than \$20 per kilolitre, but the



WaterNSW real-time river flow captured on January 8 showing the flow didn't ease until January 1.

cost is eligible for up to a 90 per cent government subsidy.

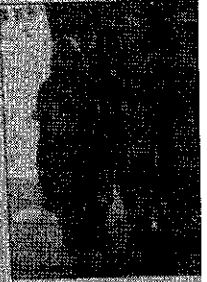
"We will be working on the costs of carting and the proportion of the subsidy now that we are starting to get real figures. Over the past few days demand has been around 500K per day.

The state of Gloucester's

town water supply sparked interest on social media with resident, Peter McLaughlin suggesting council hold a community meeting to update people on what's happening and what the plans are.

Council said updates on water storage have been provided the community

at council meetings, most recently on November 5, and it's one of the top six priorities for the community. In the update, council spoke about its large investment over the next five to 10 years in water infrastructure including a multi-million dollar investment into water storage.



Stratford Public School teachers and staff. Photo: [Name]

Stratford present

STRATFORD Public School had a formal event to celebrate the achievement of the students throughout 2019 school year.

The award winners are follows:

- Special Awards:**
- Dolly Reuning Class Trophy - Bush Farley Sportsmanship by Cooper Wenham
- School Spirit by Maddie Hooper
- Hands of Friends by Inanna Crisp
- Team Primary by Bradly Newcastle
- PO Maths Excellence

MIDCOAST Council

WATER RESTRICTIONS ARE NOW IN FORCE - visit our website to find out what

Careers at Council | **Celebrate Australia Day** | **Stratford**

We are seeking suitably qualified people to fill the roles of Executive Assistants

Education and Training | Applications are invited

Document tendered by
MS DIANNE MONTAGUE
 Received by
MONICA LOFTUS
 Date: **6/2/20**
 Resolved to publish Yes No

4. SUDCASTER ANCHOR Wednesday November 21, 2018

Severe water restrictions

BY ANNE DEEN

A FOUR-NIGHT, anti-Mind From Goulburn declared high level fire, water services from the region, it has announced that most of the region is being cut up to severe levels here.

As of Monday, November 20, all outdoor water use is banned and restrictions will be placed on businesses across the regional region except for the hotels. Most of the gardens area, which will maintain on level three.

Severe restrictions mean residents can only use one-third of their water, and gardens on level 2, and that on private of garden irrigation systems. No car or boat washing is permitted, and swimming pool top-ups are banned.

Businesses are required to limit water usage to the minimum required to maintain basic operations. Outside use of water by businesses is not permitted without an exemption.

Not what does this mean for Goulburn residents who are serviced by Council's main water storage tank?



Goulburn has three water storage towers, one of each of Flavelshaw Street, Yell Street and Conventry Road.

Council has indicated that some of the smaller water supply areas, such as Goulburn, may have restrictions that have been occurring before.

According to Council's water engineering services, the water supply areas, such as Goulburn, may have restrictions that have been occurring before.

Residents are faced at Goulburn, the region ranked in the top 100 lowest scoring regional domestic water consumption. According to NSW, the 2018-2019, according to the NSW Government's Local Water Utilities report.

Residents are being asked to contribute to reduce the water restrictions until a change in there is seen.

A few tips: Collect grey water in plastic buckets in your shower collecting your washing machine water or using kitchen sink water and use this water for garden plants.

Water restrictions are being asked to contribute to reduce the water restrictions until a change in there is seen.

Water restrictions are being asked to contribute to reduce the water restrictions until a change in there is seen.

Water restrictions are being asked to contribute to reduce the water restrictions until a change in there is seen.

MIDCOAST Council

WATER RESTRICTIONS ARE NOW IN FORCE - visit our website to find out what this means for you

COMMUNITY NEWS

Document tendered

MS DIANNE MONTAGUE

Received by

MONICA LOPTUS

Date: 6/2/20

Resolved to publish Yes / No

NSW NEWS

www.nsw.gov.au/NewsCentre/NSW

Monday, January 22, 2012

NSW NEWS

Problem is climate change

Urgent action is taken to reduce emissions and address climate change, he said.

While continuing to support adaptive and resilient strategies, NSW's farmers are already grappling with ongoing drought, catastrophic fires and extreme weather events, including devastating events, including devastating events.

Scientists have been talking about the danger of climate change for decades, but the problem is, as land managers, we need to get on with it.

Urgent action is taken to reduce emissions and address climate change, he said.

While continuing to support adaptive and resilient strategies, NSW's farmers are already grappling with ongoing drought, catastrophic fires and extreme weather events, including devastating events.

Scientists have been talking about the danger of climate change for decades, but the problem is, as land managers, we need to get on with it.

Urgent action is taken to reduce emissions and address climate change, he said.

While continuing to support adaptive and resilient strategies, NSW's farmers are already grappling with ongoing drought, catastrophic fires and extreme weather events, including devastating events.

Scientists have been talking about the danger of climate change for decades, but the problem is, as land managers, we need to get on with it.

Local Land Services fees to be waived

The NSW Government will once again waive all Local Land Services (LLS) fees for the year to provide relief for farmers going through devastating bushfires and crippling drought.

Minister for Agriculture Adam Marshall said during these difficult times, every bit of help to support farms and the wellbeing of LLS employees will reduce the burden on farm working farmers.

A top priority is to make sure farmers



Document tendered by
 MS DIANNE MONTAGUE
 Received by
 MONICA LOFTUS
 Date: 6/2/20
 Resolved to publish Yes / No

10 GLOUCESTER ADVOCATE Wednesday December 11, 2019
RURAL

Drought resources in town

BY ANNE KOEN

BUILDING networks, providing support and helping producers know where to go when they need a little help was the theme of the recent drought workshop held in Gloucester.

Around 30 producers from as far away as Dunroby gathered at the St Paul's Anglican Church hall on Thursday, December 5.

The original meeting was booked for November 15 but was postponed due to the bush fire danger across the region, and seeing as the whole point of the event was to make sure many farmers as possible could attend, it was decided part of it for a few weeks.

It was a decision that was clearly good as the turnout to the event was quite impressive.

Hunter Local Land Services (HLLS) has been running their types of workshops around the region, including Barnab and Cooperbrook, but this was the first time one was held in Gloucester.

HLLS organised to bring together as many drought



Local farmer and Local Land Services Officer, Albert Mullen spoke about how to keep a healthy dam during the drought workshop. Photo: Anne Koen

and agricultural support Government department representatives as possible in order to cover off an every-one's needs.

Along with the HLLS team who talked about animal

health and land management, there were also representatives from the Department of Primary Industries (DPI) Rural Resilience Program and the Rural Advisory Mental Health Program.

Across the day the attendees were provided with an overview of what each department does and how they can reach out for help, whether it be for financial assistance, livestock health

assistance or personal assistance. There was also information available for people in the range of drought and from both a State and Federal level and what they need to do to apply for a

stock, and the importance of them being in order to help with decisions of whether or not to kill animals.

Attendees were told how the Rural Resilience Program covers off a range of issues, helping producers, and the services available to help.

According to the DPI's Peter Brown, the program is about talking to farmers in order to find out what their issues are, that building them to someone who can help. This can be anything from financial hardship to personal struggles.

He explained how the program tries to get farmers to be more aware of their own mental health strategies to get the sign and know how to reach out for help.

The program also provides support with recovery after a major event like bush fire or drought.

There was also information available for people in the range of drought and from both a State and Federal level and what they need to do to apply for a

Statement tendered by

Ms DIANNE MONTAGNO

MON 24 JAN 2020

Date: 6 / 2 / 20
Resolved to publish Yes / No

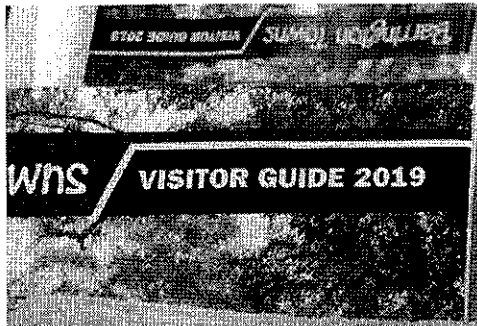
Ray White Rural Gloucester

* Fortunity Store Sale

Roy White

* Rural property sales

In times of crisis...



gloucesteradvocate.com.au

Wednesday January 22, 2020 GLOUCESTER

It's just the Gloucester way

BY ANNE KEEN

CONCERNED residents filled the Gloucester Soldiers Club auditorium to hear an update on the water, bushfire and drought situation in the region.

It's a throwback to the Gloucester Shire Council era when a community meeting would be held for any contentious issue in the region.

This is the first time since the forced council merger in 2010 that the community has asked for such a meeting and judging by the 150 or so people who poured into the auditorium on Thursday January 16, it was something the community really needed.

The meeting was spearheaded by MidCoast councillor Katherine Smith, not on behalf of council but on behalf of herself as a concerned resident in the community.

Having been a councillor on the former Gloucester Shire Council, she understands the community's desire to have people come and explain the situation and put minds at ease that things are being taken care of.



It's just the Gloucester way, Katherine said.

And it's a way that seems to work with attendees leaving with a lot more information about the localities, nearby council's plans for the town

and where people can go for help with the ongoing drought situation.

Among the speakers were MidCoast Council's director of infrastructure and engineering services, Rob Heath, talking about the water situation, and Stuart Robb from NSW RFS, covering the bushfire situation, both delivering a very thorough explanation

after each speaker attendees were invited to ask questions.

It was a very intelligent, inquisitive meeting which many believe should have been initiated by council months ago.

According to Katherine, overall the evening went well and she received only positive feedback.

Letter: Water owners need

OPINION

THANK you for the article Council seeks alternate water (January 15, 2020) giving some clarification on the source of the water currently being trucked in to Gloucester by the MidCoast Council.

As confirmed at the public meeting on Thursday, the water which might be obtained from Yancoal Coal is not suitable for domestic use.

I wonder whether you realise that the Dickman South Dam on the former ACT, also used to illustrate your article, contains water produced when extracting gas from the local exploration wells. This water is extremely safe and has other nasty components which makes it very difficult to dispose of safely.

So I hope no one is getting excited about having found another alternate source of water supply.

However, as discussed at the public meeting, the council gets a NSW Government subsidy for the cost of trucking water from Tea Gardens to supply the township of Gloucester.

I am wondering why the NSW Government does not

also subsidise the cost of getting tanks filled, any that it is currently only town water. It is only a water alternative.

Perhaps Coast Council should consider this.

LETTER
Letter
Advocate
res. mill
ure and
words
a slight
fiction



Taree Universities Campus Pro

A major... year announced that...
...the development of a new campus...
...the development of a new campus...
...the development of a new campus...



They... the...
...the...
...the...
...the...



Document tendered by
Ms. PIANNE MONTAGUE
Received by
MONICA LOFTUS
Date: 6/12/20
Resolved to publish Yes / No

Photo taken at the property first housing Barrington River & Hoody Crossing passways on Saturday, December 28. Photo supplied by...

Barrington River runs dry

Never say never

By AMY BERRY
The Barrington River, which flows through the town of Barrington, has been dry for the first time in over 100 years. The river, which is a tributary of the Merrimack River, has been dry since the late 19th century. The town of Barrington is located in the Merrimack Valley, which is a major agricultural and industrial region in New England. The river has been a vital part of the town's history and economy. The town of Barrington is located in the Merrimack Valley, which is a major agricultural and industrial region in New England. The river has been a vital part of the town's history and economy.



Photo taken at the property first housing Barrington River & Hoody Crossing passways on Saturday, December 28. Photo supplied by...

On the day, the river was completely dry. The water level was so low that the riverbed was visible. The town of Barrington is located in the Merrimack Valley, which is a major agricultural and industrial region in New England. The river has been a vital part of the town's history and economy. The town of Barrington is located in the Merrimack Valley, which is a major agricultural and industrial region in New England. The river has been a vital part of the town's history and economy.

INNEY'S GROCERS

GOOCH

ADJUTANTS

Document tendered by
 MS. DIANNE MONTAGUE
 Received by
 MONICA LOFTUS
 Date: 6/2/20
 Resolved to publish Yes / No

Bloubaux
The spirit of care, community since 1905

Gloucester region comes out okay, so far

Smoke and fire

By Anne Kern

With a few exceptions, most of the smoke and fire damage in Gloucester was limited to the houses and barns of the region's rural areas. The fire, which started in the early morning hours of November 12, spread quickly through the region, but the damage was limited to the houses and barns of the region's rural areas. The fire, which started in the early morning hours of November 12, spread quickly through the region, but the damage was limited to the houses and barns of the region's rural areas.



Harriet R. is seeking advice from the Gloucester region's rural areas. The fire, which started in the early morning hours of November 12, spread quickly through the region, but the damage was limited to the houses and barns of the region's rural areas.

The houses, however, were not destroyed. The fire, which started in the early morning hours of November 12, spread quickly through the region, but the damage was limited to the houses and barns of the region's rural areas.

According to the Gloucester region's rural areas, the fire, which started in the early morning hours of November 12, spread quickly through the region, but the damage was limited to the houses and barns of the region's rural areas.

Keith J. is a Gloucester resident who has been affected by the fire. The fire, which started in the early morning hours of November 12, spread quickly through the region, but the damage was limited to the houses and barns of the region's rural areas.

Document tendered by
 MS DIANNE MONTAGUE
 Received by
 NONICA LOFTUS
 Date: 6/2/20
 Resolved to publish Yes / No

ADVOC
/Glouc

GLoucester ADVOCATE Wednesday November 13, 2019

LIFE | COMMUNITY NEWS

Please save water

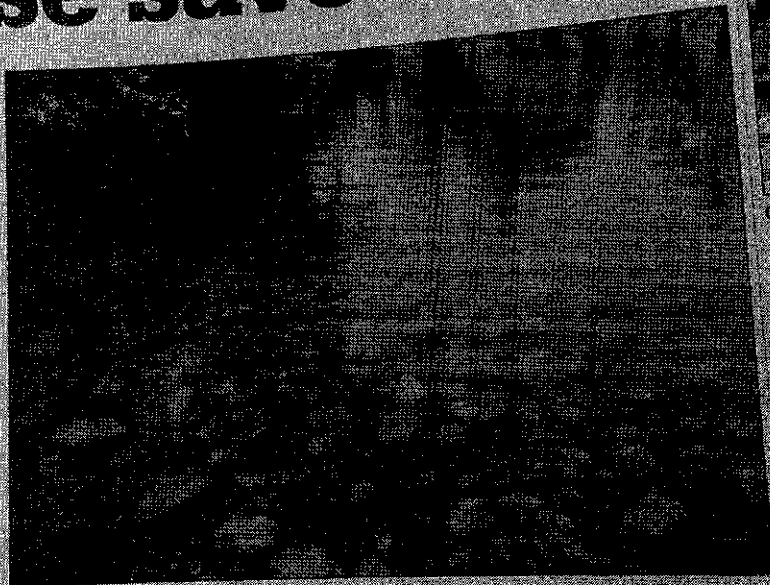
WITH MidCoast Council rolling out very high water (level 3) restrictions on Monday (November 11), it warns that Gloucester may soon see tougher restrictions on the way soon, unless decent rainfall occurs in the catchment areas.

According to council's Director of Infrastructure and Engineering Services, Rob Scott it's the driest conditions in over 130 years with the lowest average river flows from 75 years of records.

"We are facing the most severe water shortage across the MidCoast region ever recorded. We will require everyone to assist in conserving water, so together we can get through this drought," he said.

Using weather forecasts and water usage modelling, MidCoast staff are planning for more severe water shortages ahead. At this stage, it is possible that a further increase in water restrictions to Severe (level 4) will be needed in December.

"We have to face the possibility that some of our smaller water supplies, such as Gloucester, may enter



Barrington River feeds Gloucester's water supply. MidCoast Council tightens restrictions on water usage across the region.

emergency restrictions," Mr Scott explained. "This has never occurred before in our region. We are making plans just in case emergency supplies need to be accessed."

Council is developing options for short term emergency supply of water including getting as much as possible out of the current

systems.

"There are many considerations we must take into account, to find the economic solutions to deliver a high quality water product to our community. We will keep our community informed as the situation changes."

More than ever before, everyone is urged to comply

with water restrictions and help to save as much water as possible. You can explore more ways to save water at www.midcoast.nsw.gov.au/savewater. Complying with restrictions is a whole of community effort, with council operations, businesses and holiday makers all required to curb water use.

IN THE DAY

CELEBRATION

VIEW Chris

LADIES are Gloucester celebrate will meet at Soldiers Cl son Street 11.30am sta November and help us Learning to VIEW sta interests women's volun and supp empower their vote of impar wellbeing

Document tendered by
MS DIANNE MONTAGUE
Received by
MONICA LOFTUS
Date: 6/2/20
Resolved to publish No



BP ADVOCATE Wednesday November 06, 2019

Paul to hang up his dental mirror

CONTRIBUTED FROM PAGE 1
The new dental community appealed me: the way they displayed around me.
Just a my frequent memo is completed.

through Paul said use practice about five years ago, he's continues for work while gradually regaining his grip at the surgery.

Once he stops working completely, it will have up more time to spend on his property, travelling with his wife, and hanging out with his four grandchildren.

DID YOU KNOW?

When Paul first bought the practice it was located in a long strip of struts above Semson's. Measurement on Church Street where Federal Agency is currently located. He eventually decided it was time to build a new, more modern practice where it's currently located on King Street among the bushes across in 1983.

Council's climate vote



Grover's Dominique Jacobs encouraged MidCoast Council to consider declaring a climate emergency during the recent ordinary meeting. Photo supplied

BY ANNE KEES
The council has indicated its support for the climate emergency declaration, but it is not yet a decision. The council is expected to vote on the declaration at its next meeting on 21 November.

The council has indicated its support for the climate emergency declaration, but it is not yet a decision. The council is expected to vote on the declaration at its next meeting on 21 November. The council has indicated its support for the climate emergency declaration, but it is not yet a decision. The council is expected to vote on the declaration at its next meeting on 21 November.

The council has indicated its support for the climate emergency declaration, but it is not yet a decision. The council is expected to vote on the declaration at its next meeting on 21 November. The council has indicated its support for the climate emergency declaration, but it is not yet a decision. The council is expected to vote on the declaration at its next meeting on 21 November.

The council has indicated its support for the climate emergency declaration, but it is not yet a decision. The council is expected to vote on the declaration at its next meeting on 21 November. The council has indicated its support for the climate emergency declaration, but it is not yet a decision. The council is expected to vote on the declaration at its next meeting on 21 November.

Document tendered by
MS PIAUNE MONTAGUE
Received by
MONICA LOFTUS
Date: 6/2/20
Wished to publish Yes / No