

Every koala is important

Every koala is an individual

Every koala colony is unique

Every koala population is unique

The landscape and threats every
koala/colony/population occur in is unique

Habitat use varies over time and space

Recovery needs to be tailored to the needs of
the individuals, the colony and the population

Document tendered by

MS MARIA MATTHES

Received by

ANDREW RATCHFORD

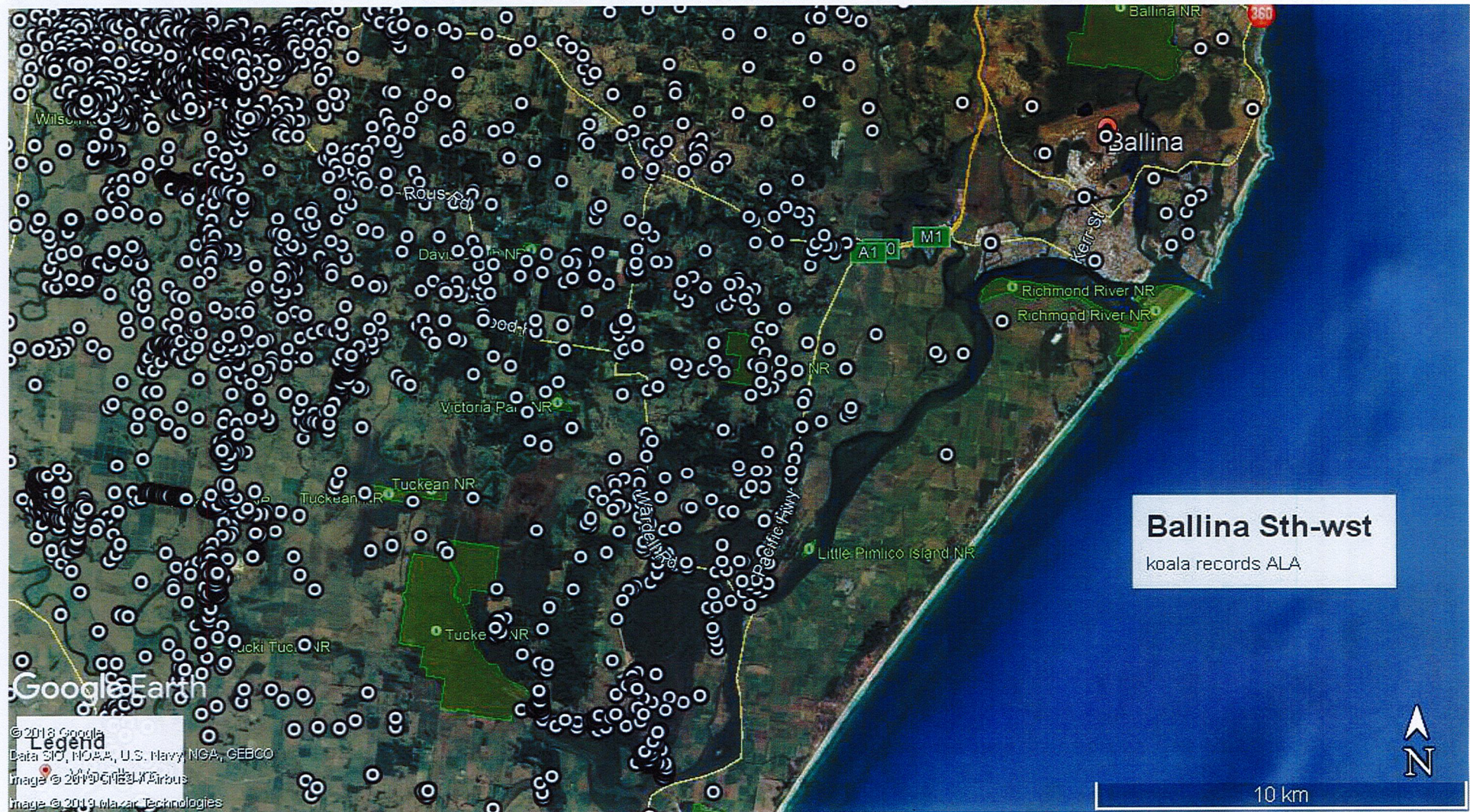
Date: 18 / 10 / 19

Resolved to publish Yes / No

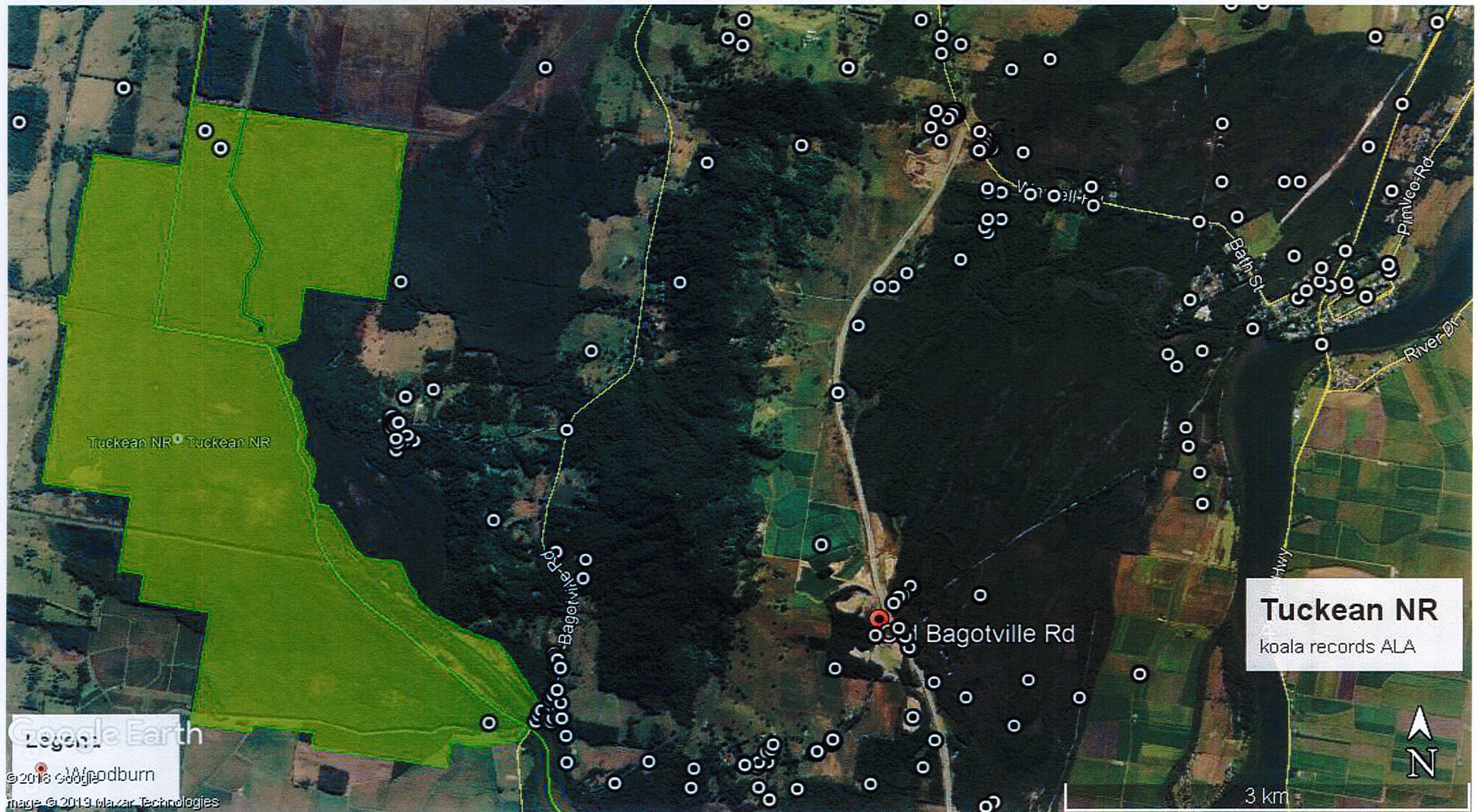
Landscape of Ballina's Koala's – relatively intact contiguous vegetation



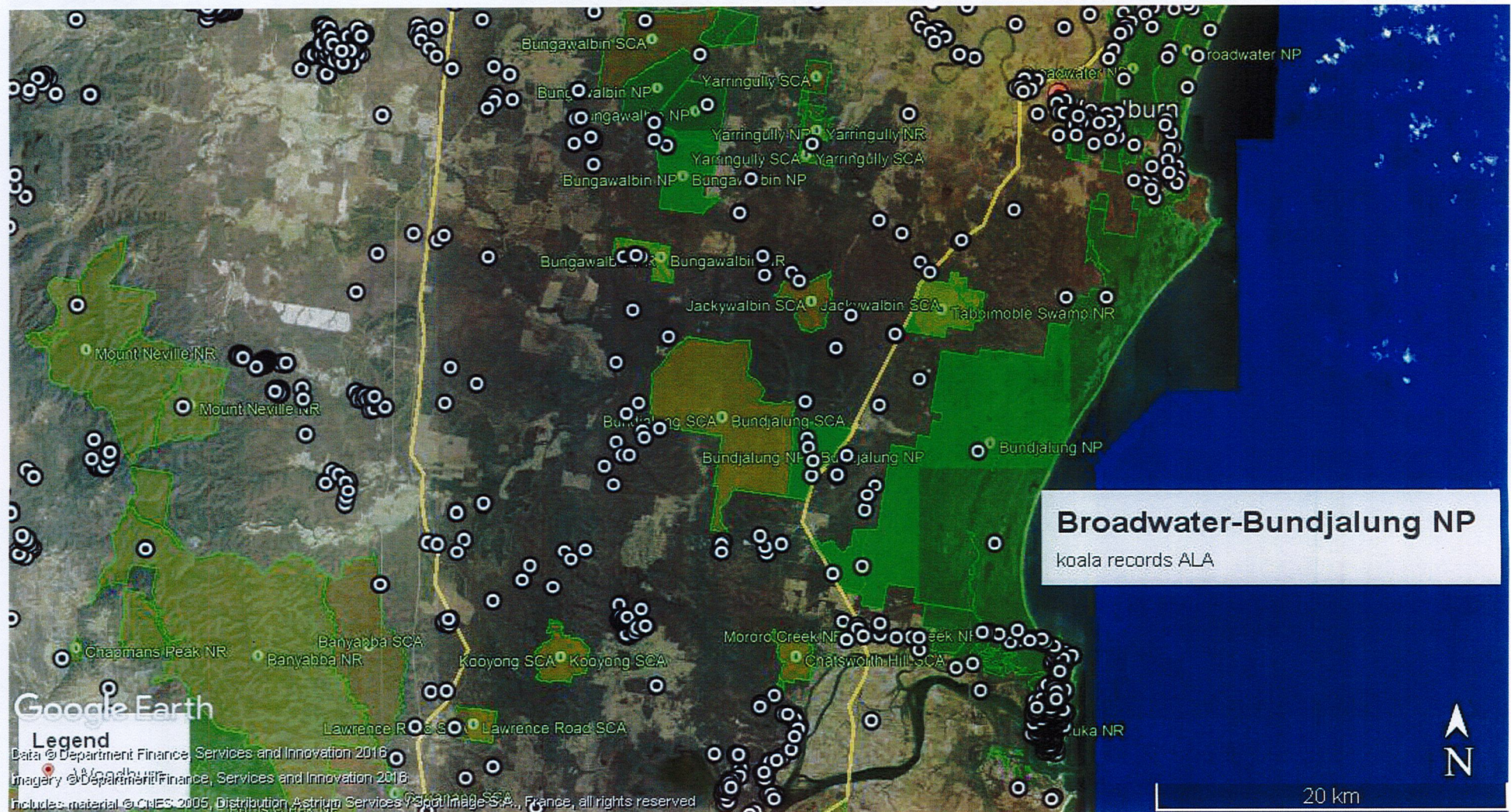
Koala Records for Ballina's Koalas across the landscape



Koala Records for most of Ballina's Koalas nationally significant population across the landscape



Richmond Valley Coastal Koalas – lots of vegetated land, koala food trees scattered across the landscape



Landscape of South East Lismore's Koala's – highly fragmented landscape



Koala Records for South east Lismore and Ballina's Koalas across the landscape - note north east corner shows Laws Point (not in Ballina's koalas image)

