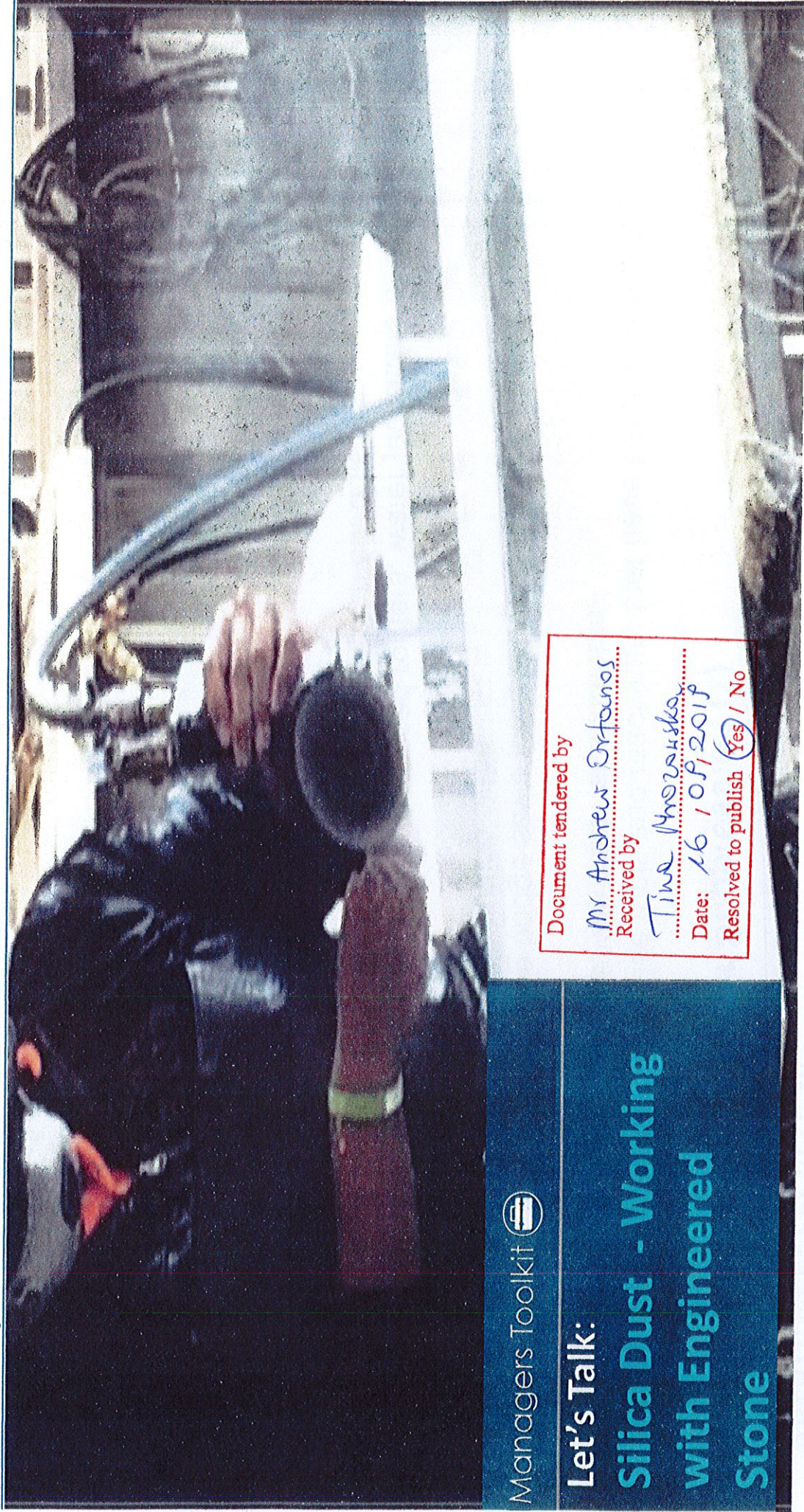





**BREATHE FREELY Australia**

**Managers Toolkit  
Engineered Stone Silica Dust**



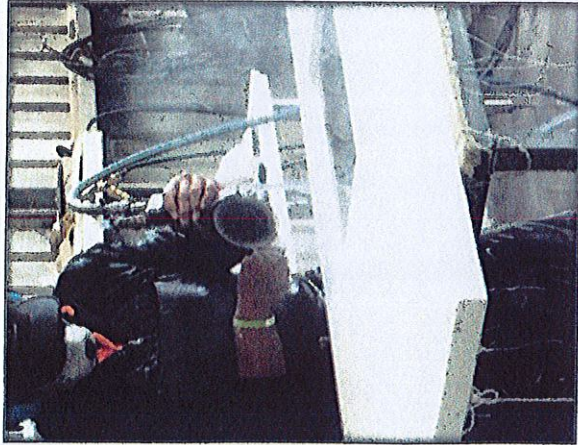
**Managers Toolkit** 

**Let's Talk:  
Silica Dust - Working  
with Engineered  
Stone**

Document tendered by  
*Mr Andrew Orfanos*  
Received by  
*Tina Morozska*  
Date: *16 / 09 / 2019*  
Resolved to publish  Yes /  No



## Water Suppression (1)

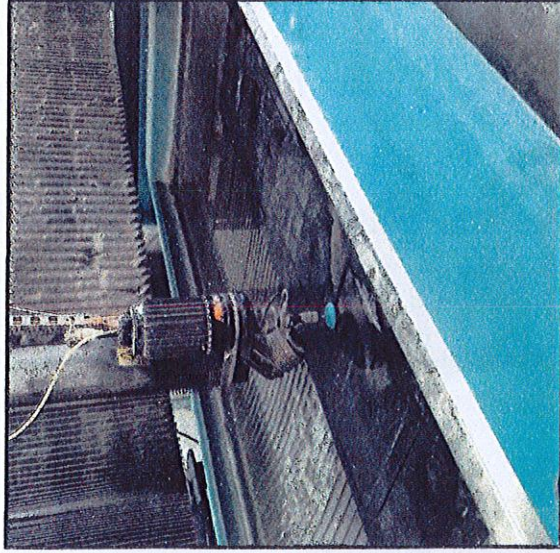


Images supplied by Queensland Government

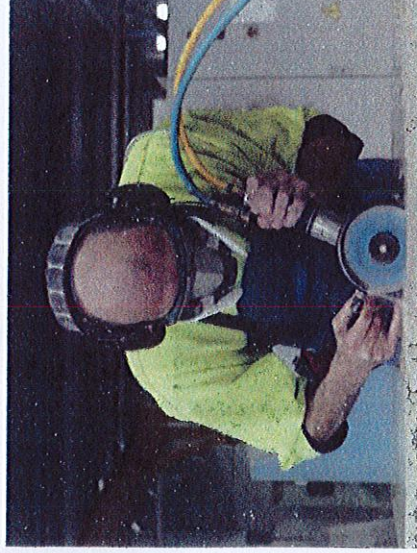
Only use tools and machinery that have been specifically designed for use with water attachments -

- Use bridge saws fitted with water attachments to suppress dust when cutting slabs.
- Use water suppressed routers, water jet cutters or bridge saws to complete sink and stovetop cut outs.
- Use hand-held angle grinders fitted with multiple water feeds to deliver water to the cutting disc and point of contact with the stone.
- Use water suppressed wet-edge milling machines or polishing machines.
- Use polishers with a centre water feed to polish or grind stone.





Images supplied by Queensland Government



Images supplied by NSW Government

## Water Suppression (2)

- Use an adequate number of water feeds directed at the material and/or tool to prevent visible dust during the process.
- Maintain an adequate water pressure to make sure water is reaching the material and/or tool.
- Control water spray from water suppressed tools and machinery using guards, plastic flaps or brush guards.
- Prevent workers from being able to turn water suppression systems down or off during operation.
- Ensure water used for dust suppression is clean.
- Recycled water should be treated through a system that includes an appropriate micron filter.



**BREATHE FREELY Australia**

Managers Toolkit  
Engineered Stone Silica Dust

## Risk Assessments - Air Monitoring

Air monitoring can be used to check on respirable silica dust levels and the effectiveness of the controls and work practices.

Monitoring must be performed by a competent occupational hygienist. Check the website:  
<https://www.aioh.org.au/resources/find-an-occupational-hygienist>

Best practice with controls, results in exposures below 50% Safe Work Australia Exposure Standard (WES) for respirable crystalline silica. Exposures must be below the WES. <https://www.safeworkaustralia.gov.au/chemicals>



Courtesy of Qld Dept of Natural Resources Mining and Energy

Results must be provided to the workers and made available for the occupational medical practitioner's performing the medicals



**AIOH**  
AUSTRALIAN  
INSTITUTE OF  
OCCUPATIONAL  
HYGIENISTS

**BOHS**  
The Chartered Society for  
Worker Health Protection