

Sydney Football Stadium Redevelopment

May 2018



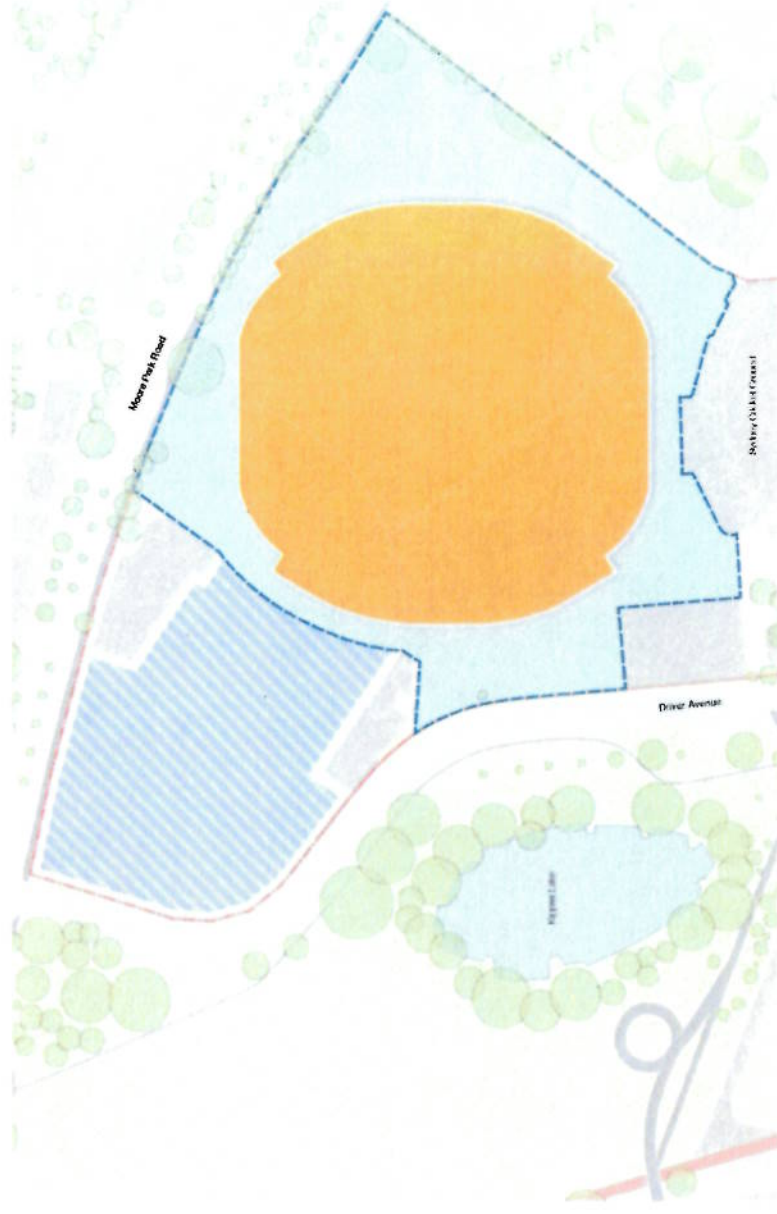


Agenda

- Project Overview
- Planning process
- Project design
- Project timeframe

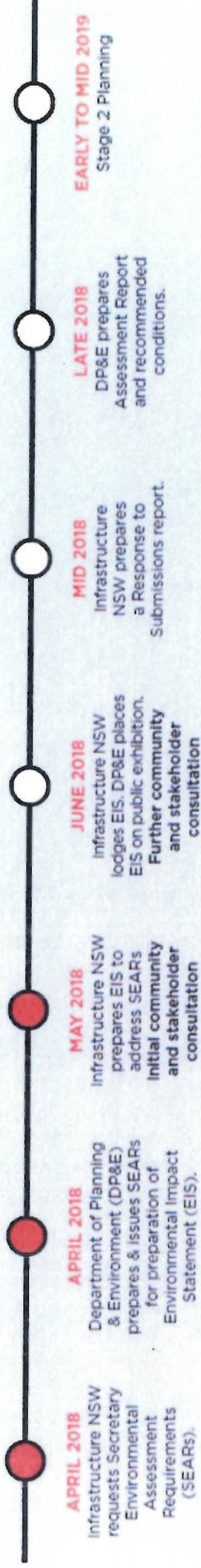
Project overview

- Tier 1 stadium with up to 45,000 seats contained wholly on SCGT land
- Enhanced game day experience for all patrons – all seats protected from the elements, closer to the action, state of the art technology
- More disabled seats and public amenities
- Modern food and beverage offerings
- New basement with service vehicular access for servicing and bump-in/bump-out
- More landscaping around the precinct, which can be activated into fan zones on big event days



The planning process

WE
ARE
HERE





The planning process

Stage 1:

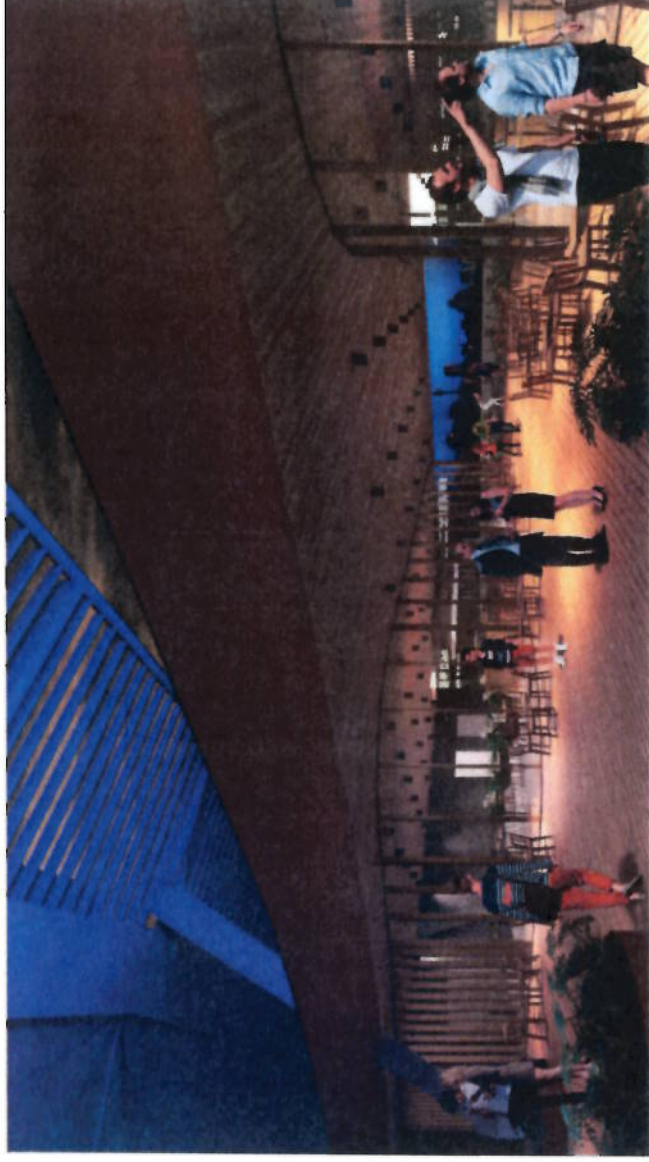
- Concept proposal stadium envelope
- Early works including demolition and site preparation

Stage 2:

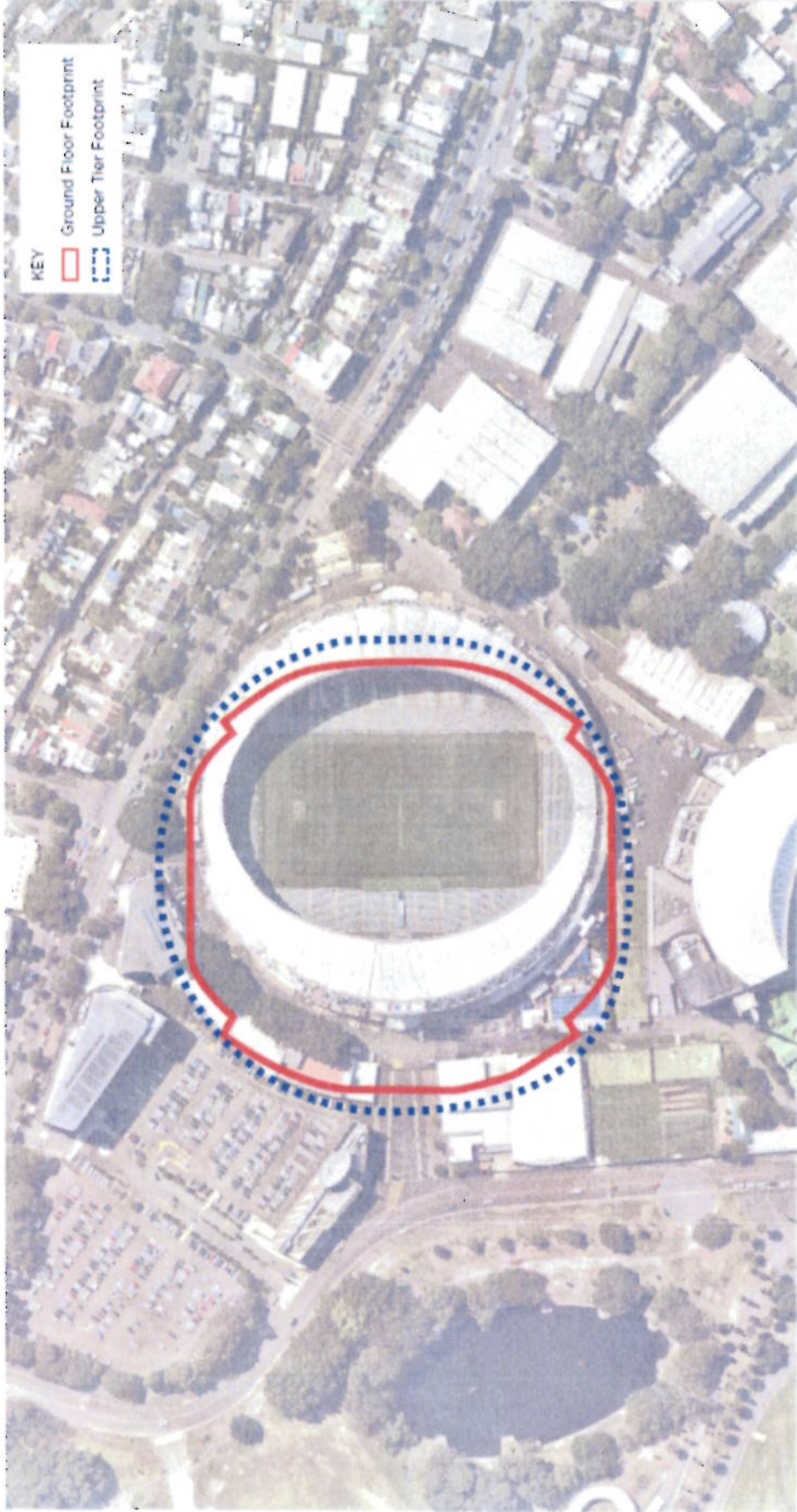
- Detailed design and construction of stadium and ancillary uses
- Operation of the stadium and ancillary uses

Design principles

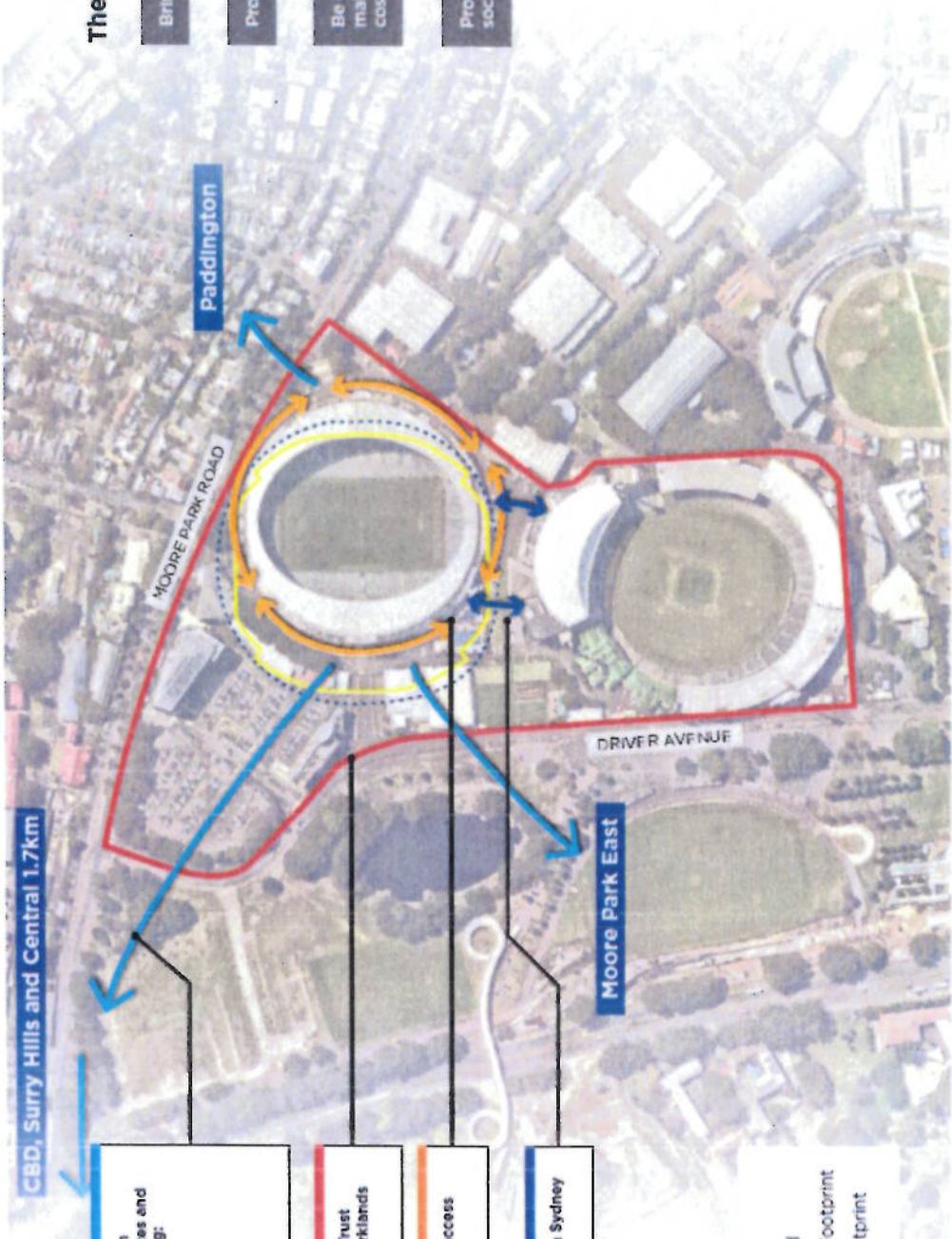
- Character and atmosphere
- Amenity
- Heritage
- Movement and circulation
- Landscape and open space
- Safety and security
- Sustainability
- Wayfinding and signage



Proposed footprint



Key moves



The new stadium aims to:

- Bring patrons closer to the action
- Provide covered seating for all
- Be cost effective with minimal maintenance and operational costs
- Provide better accessibility and social inclusion

Better integration with surrounding civic spaces and infrastructure including:

- Public transport;
- Moore Park East;
- Moore Park Road;
- Paddington; and
- SCG.

Built entirely on SCG Trust land, neighbouring parklands preserved.

Improved pedestrian access around the stadium.

Better integration with Sydney Cricket Ground.

KEY

- SCG Trust Land
- Ground Floor Footprint
- Upper Tier Footprint

Questions

