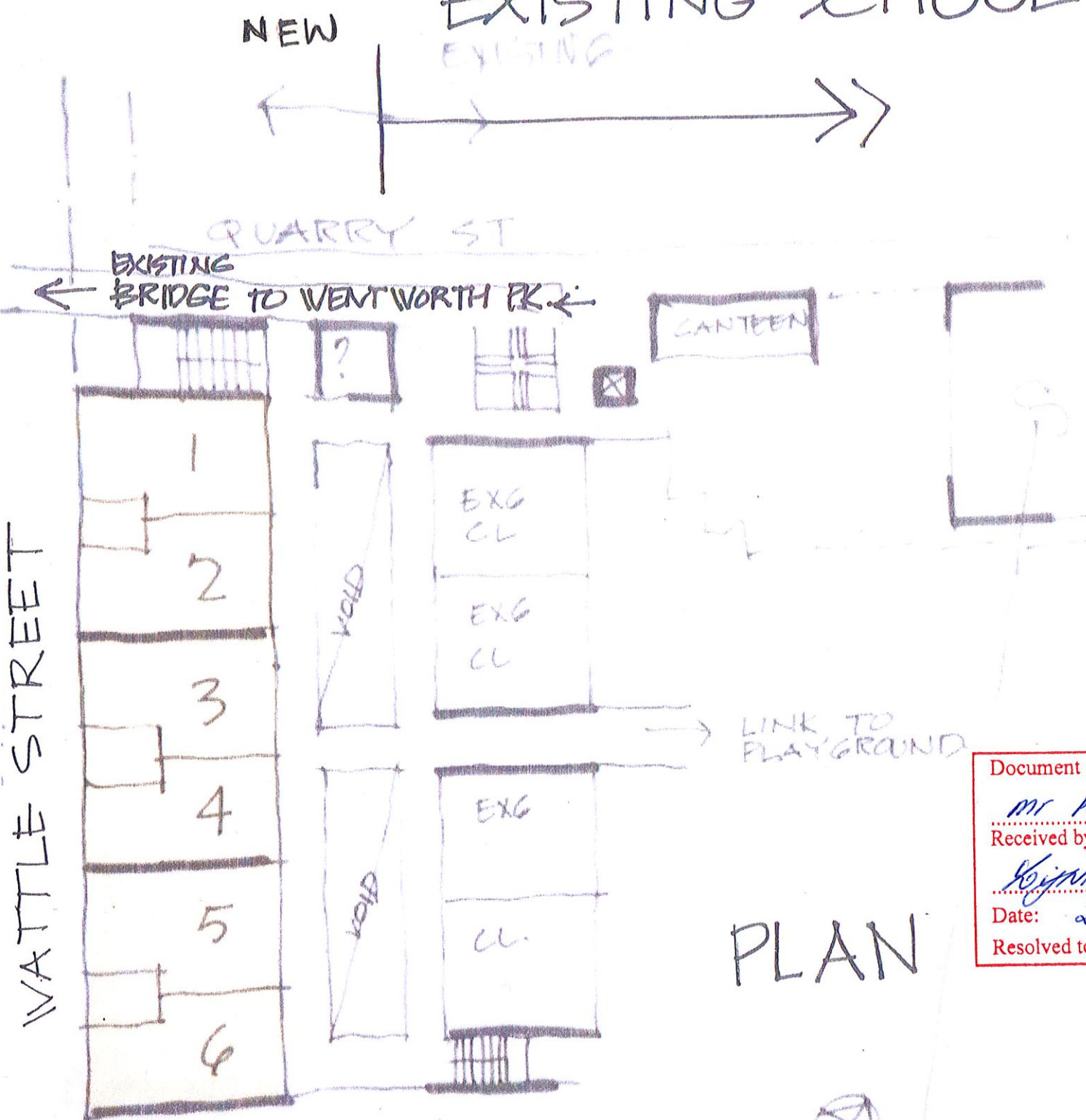


EXISTING SCHOOL

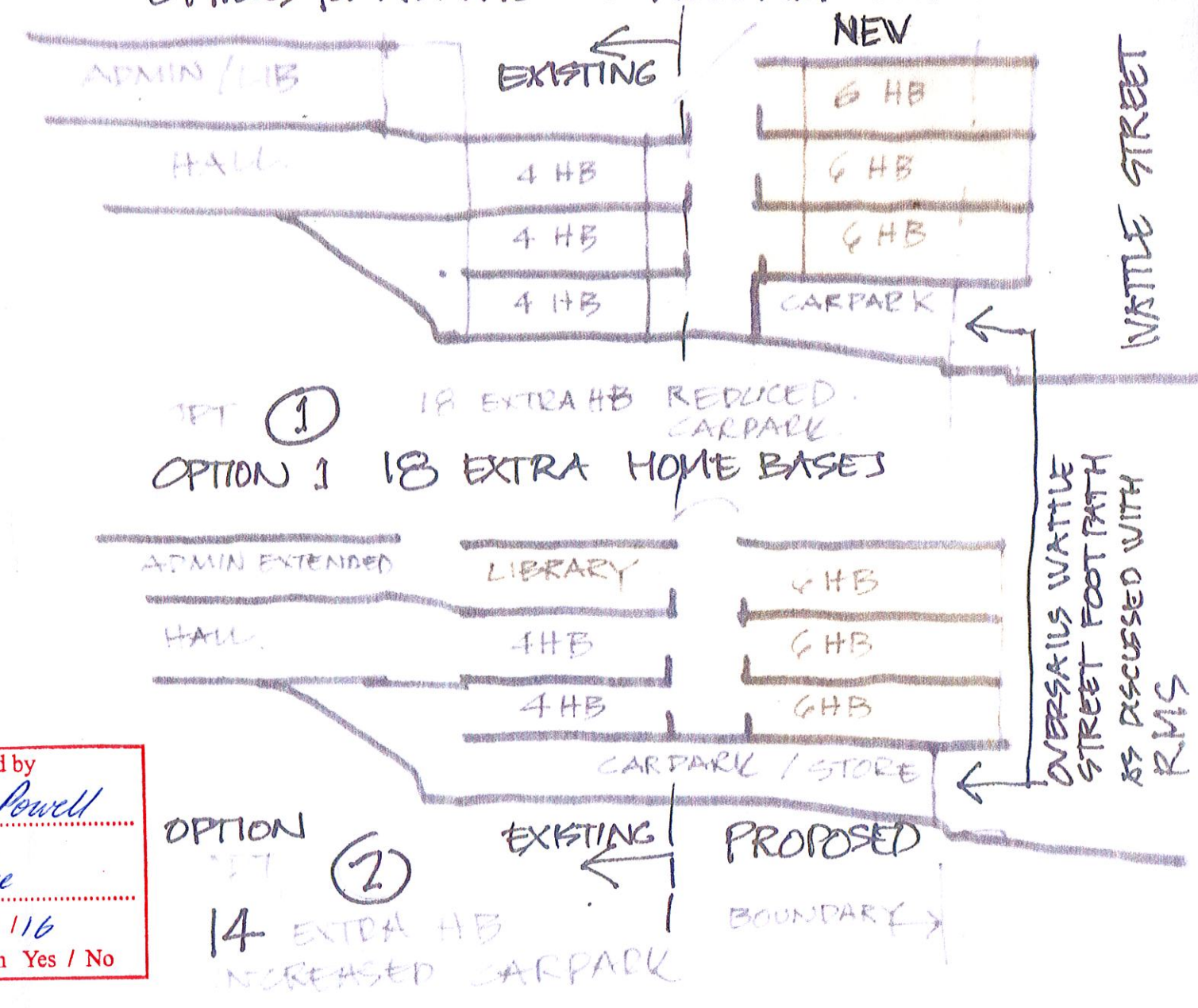


PLAN

Document tendered by
 Mr Ron Powell
 Received by
 Keirra Rice
 Date: 25/11/16
 Resolved to publish Yes / No

OVERSAILS
 WATTLE ST
 FOOTPATH
 AS DISCUSSED
 WITH
 RMS
 ROADS &
 AIRTIME
 SERVICES

ULTIMO PUBLIC SCHOOL OPTIONS for ADDITIONAL ACCOMMODATION



CONCEPTUAL DIAGRAM PREPARED
 BY STEVART MORGAN
 EX. GOVERNMENT ARCHITECTS OFFICE
 DESIGN ARCHITECT for TOTAL SCHOOL
 UPGRADE, EARLY 2000S

CROSS SECTIONS THROUGH NEW
 ACCOMMODATION.