

Document tendered by
 Ms. Mary Casey
 Received by
 Mr. Hormoz Eshaga
 Date: 25 / 11 / 2016
 Resolved to publish Yes / No

CONSULTATION TO DATE

Method	Quantity			Total to Date
	Dec 14 to Hold Fig and Wattle Site	Sep 2015 to Jan 2016 Quarry Site	Feb 2016 to Nov 2016 Quarry/Temp Site	
PRG Meetings				23
Parent Workshops	2	1	1	4
Teacher Workshops	2	1	2	5
Community Group Workshops*	3	1	2	6
Student Presentation			1	1
Student Projects	1		1	2
P&C Meetings		1	2	3
Field Trips		1	1	2
Info Booths	6	6	11	23
Letter Drops	1	3		4
Blog Posts	13	8	20	41
Fact Sheets	3	4	10	17

*including one meeting with City of Sydney Community Services

CONSULTATION WEBSITE

HOME / NEWS / EVENTS / HALF HOUR LIVE / RESOURCES / FAQ / ABOUT THE PROJECT

 **ULTIMO/PYRMONT PUBLIC SCHOOL DEVELOPMENT**



WORKSHOPS WITH PARENTS AND CARERS ABOUT ULTIMO PUBLIC SCHOOL POP-UP SCHOOL

On 24 October 2016 we held two workshops, one at 2:00pm and one at 6:00pm, with parents and carers from Ultimo Public School to show them the proposed 'pop-up school' design.

Thanks...

Mary Carey



NOVEMBER UPDATE

What's happening now? 'Pop Up' Temporary School The STEEP 2% Amendment is being finalised and is expected to be gazetted this month. We're making progress on finalising the Lease and the Details of...

November 2, 2016, Mary Carey

Search and try again.

RECENT EVENTS

Workshops with Parents and Carers About Ultimo Public School Pop-Up School

November Update

Next steps announced for development of new Ultimo Public School

Educational Schools Tour

October Update

NEWSLETTERS

Email address

Your email address

Sign up

RECENT COMMENTS

Mary Carey on Outcome of Parents and Carers Workshop on Temporary School

Mary Carey on Outcome of Parents and Carers Workshop on Temporary School

The website was launched in March 2015. Its address has been included on letter drops and all communications since the start of the project.

To give you a sense of the impact and reach it is having, it has had nearly 10,000 page views since it was launched.

EDUCATIONAL PRINCIPLES



This vision is supported by a number of goals, and performance against them will be measured by targets.

The Educational Principles are an integral part of the development of the design.

In addition to the EFSG, these principles were created in a series of workshops with the PRG at the launch of the project, and they have been carried over to apply to the Quarry Street site.

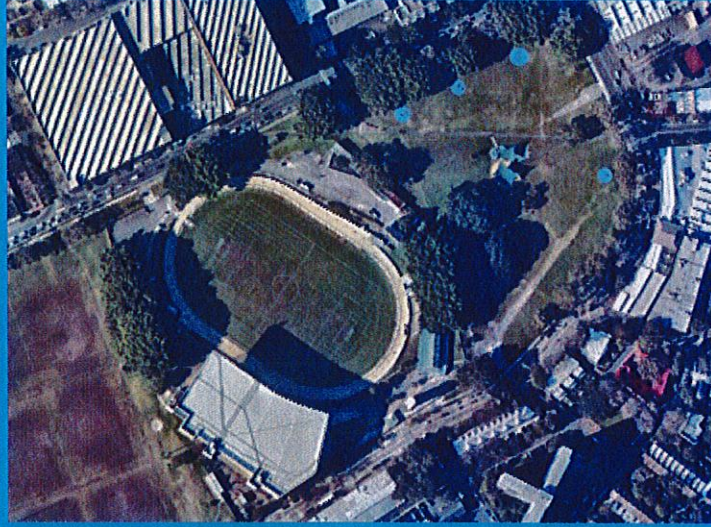
NEW SCHOOL CONSULTATION THEMES



TEMPORARY SITE LOCATIONS

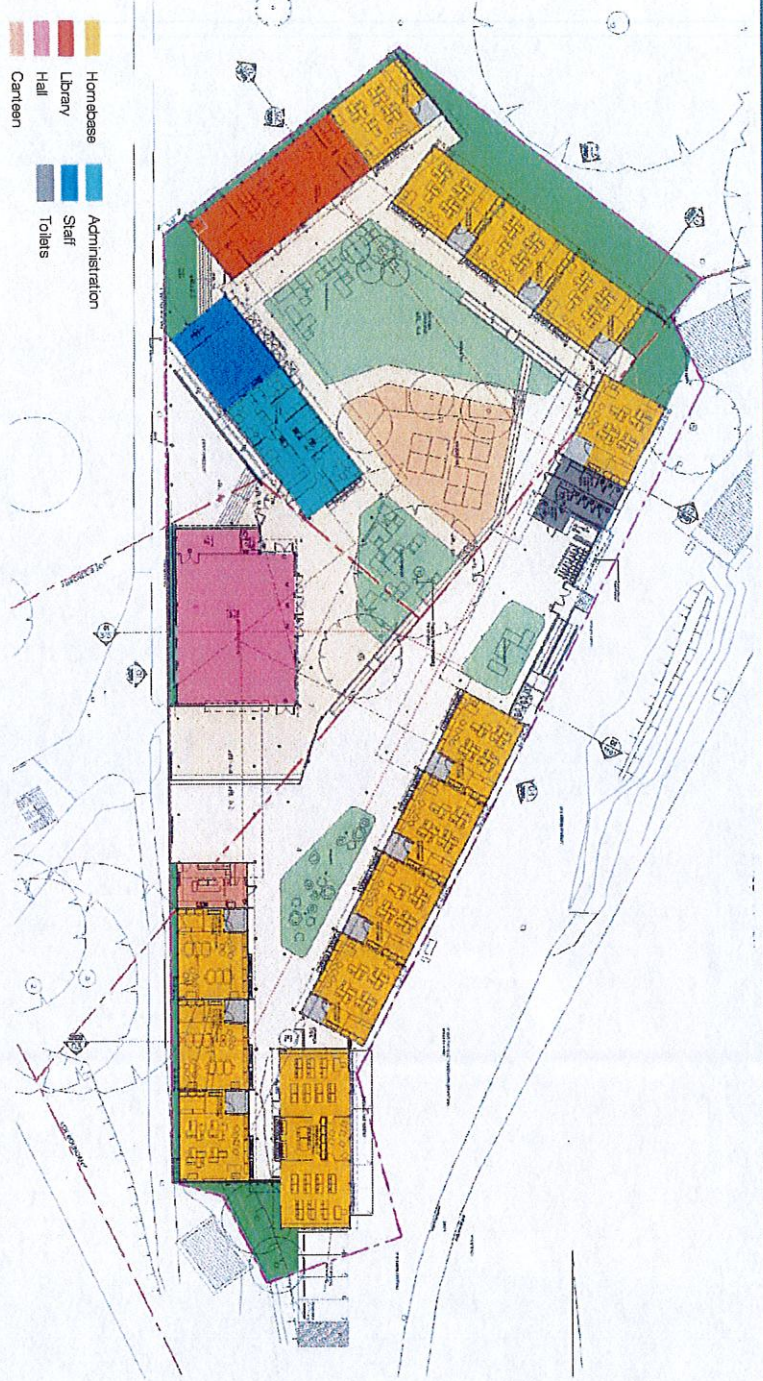


Annandale TAFE site

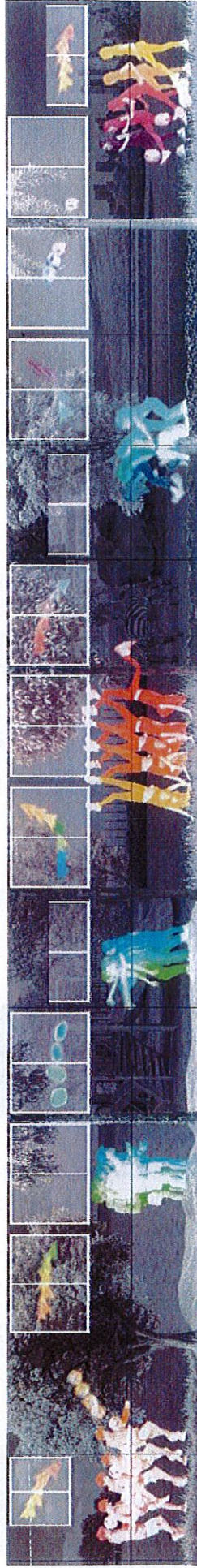


Wentworth Park, Ultimo

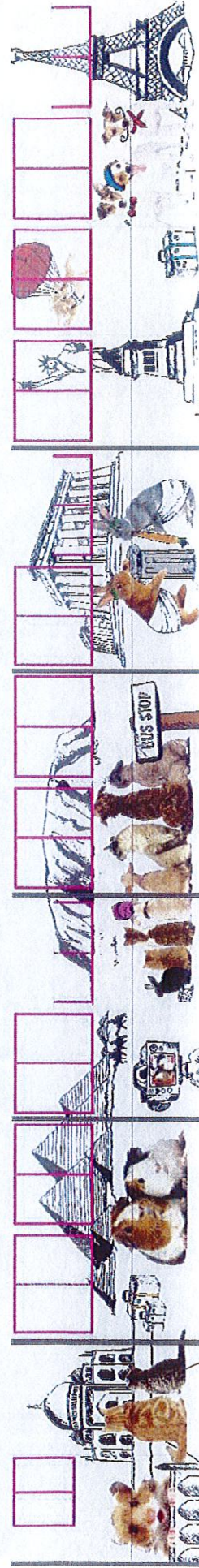
SCHOOL DESIGN



GRAPHIC WRAP

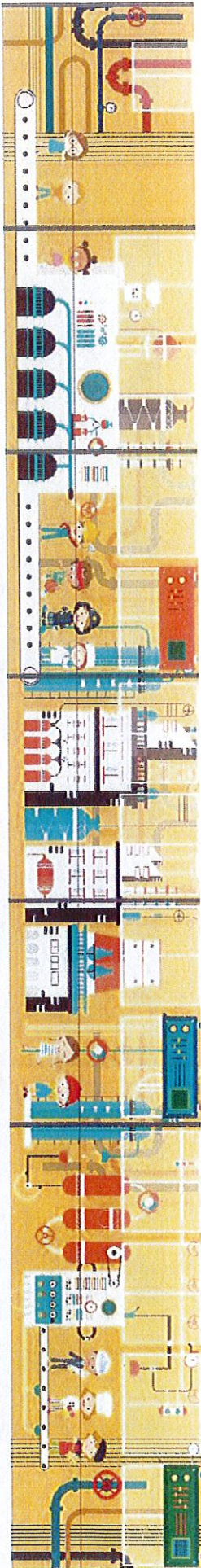


Option 1: Stop Motion

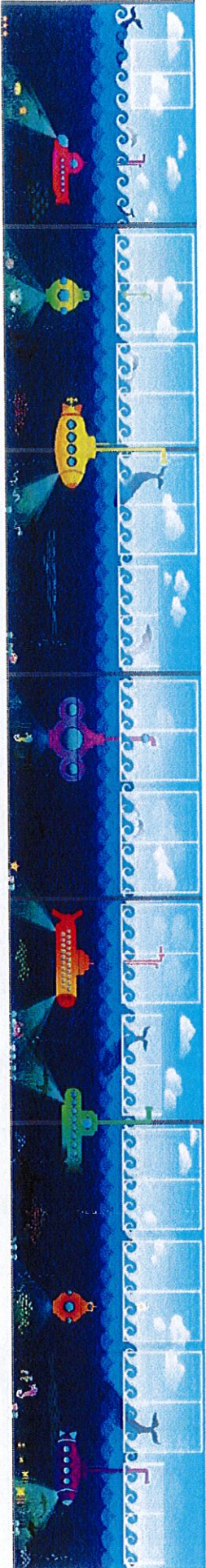


Option 2: Pets on Holiday

GRAPHIC WRAP



Option 3: Future Factory



Option 4: Under the Sea

GRAPHIC WRAP



