

# State Heritage Register Nomination Form



NSW GOVERNMENT  
Department of Planning



## Important notes for nominators

Before completing this form, read the *Guideline for Nominations to the State Heritage Register*\* to check whether a nomination is appropriate.

You should only nominate an item you believe to be particularly important in the context of all of NSW, beyond the local area or region.

This is because only items of *state* heritage significance are eligible for listing on the State Heritage Register.

When completing this form note that:

- It must be completed and submitted electronically.\*
- Follow the guideline\* to fill out the form accurately.
- **YELLOW sections** of this form are mandatory for your nomination to be accepted for consideration.
- **BLUE sections** of this form are recommended, but are not essential, unless otherwise indicated in the form.
- The completed form must show *how* the nominated place is *state* significant to meet the criteria for listing on the register.
- Incomplete nominations, or those with insufficient information, may not be accepted.
- A complete and accurate nomination form, with a clear assessment of state significance of the place or object, will assist in the timely consideration of your nomination.

\* Download this form and guideline at: [www.heritage.nsw.gov.au/nominating](http://www.heritage.nsw.gov.au/nominating)

Document tendered by

M/ Graham Quint

Received by

Merrin Thompson

Date: 05/09/2016

Resolved to publish

Yes / No

## A. Nominated place

### 1. Name

Name of place / object:	Ultimo Power House
Other or former name(s):	Ultimo Power Station; Powerhouse Museum

### 2. Location

Street address*:	500 (no.)	Harris Street (street name)
	Ultimo (suburb / town)	
Alternate street address:	(no.)	(street name)
	(suburb / town)	
Local government area:	Sydney City Council	
Land parcel(s)*:	1 (Lot no/s)	(section no.) 631345 (DP no.)
	(Lot no/s)	(section no.) (DP no.)
	(Lot no/s)	(section no.) (DP no.)
Co-ordinates*:	(Latitude)	(Longitude) (Datum)

\*At least one of these three location details must be provided. For a movable object, enter its principal location. If the place has no street number, provide land parcels. If it has no land parcels, provide Co-ordinates and a map.

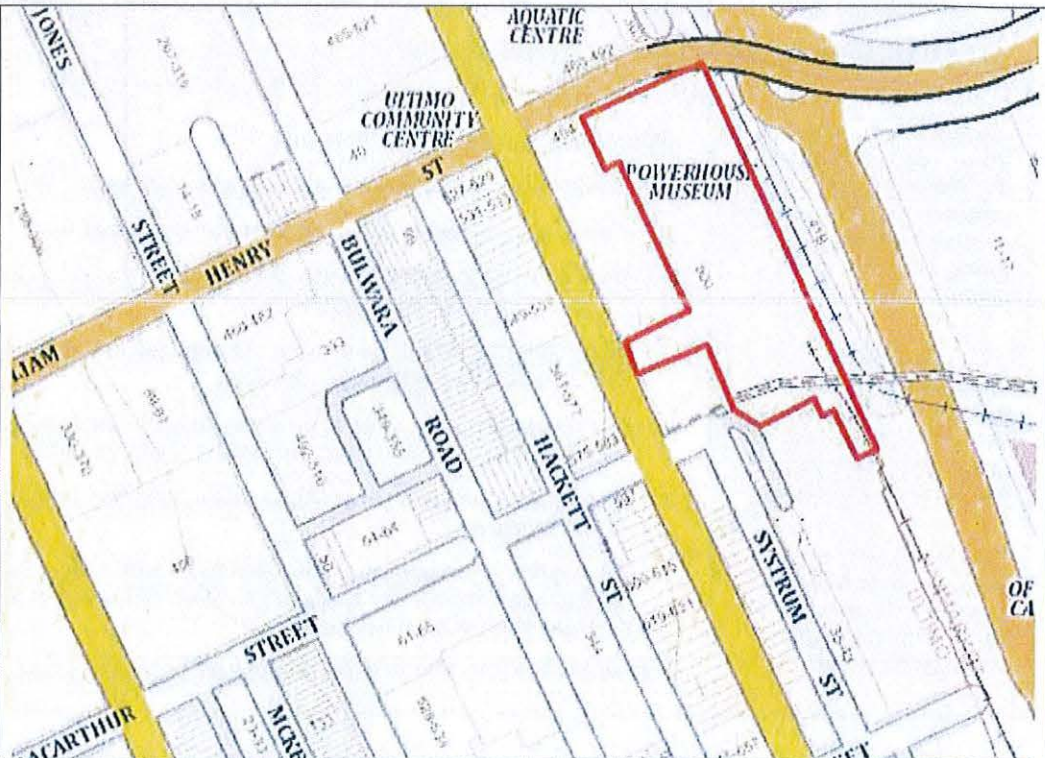
### 3. Extent of nomination



# State Heritage Register Nomination Form



Curtilage map of nominated area:



Source of map or plan:	LPI SixMaps
Boundary description (in words):	The boundary is the property boundary for Lot 1 DP631345

## 4. Ownership

Name of owner(s):	NSW Government - Museum of Applied Arts and Sciences	
Contact person:	?	
Contact position:	Director	
Postal address:	500 Harris Street (street address or postal box)	
	Ultimo (suburb or town)	
	NSW (state)	2000 (post code)
Phone number:	+61 (02) 9217 0111	
Ownership explanation:	Administered by the MAAS Trust and the NSW Minister for the Arts	

## B. Significance

### 5. Why is it important in NSW?

Statement of state significance:	The former Ultimo Power House is of State significance historically for being the first large state-owned electricity generating station in NSW and the original generating station for the supply of electricity to power the electric tramway network throughout Sydney. It was one of the largest and most important generating stations in NSW for many years and has associations with the electrification of the suburban tramway and railway systems and with the general reticulation of electrical power in Sydney. It was the site where most major
----------------------------------	---



# State Heritage Register Nomination Form

	<p>technological advancements in electrical generation, including steam turbines and large-scale, alternating-current generation, were trialled by NSW electricity authorities. The station also played a major part in the development of the Ultimo/Pymont area.</p> <p>The power station buildings are a landmark group of buildings which relate closely to the visual and architectural industrial context of the area. The Boilerhouse building was, in its day, one of the largest brickwork structures in the state and the chimneys were significant Sydney landmarks for seventy years. Furthermore, the adaptive work undertaken for the station's conversion to the Powerhouse Museum is significant both for its successful re-use of the buildings and successful integration of old and new buildings; the new building was awarded the Sulman Medal by the RAIA in 1988.</p> <p>The Ultimo Power House was adapted to house the Museum of Applied Arts and Technology (later, the Powerhouse Museum), the principal museum of technology, manufacturing, science and craft in NSW and retains the historical, aesthetic and cultural associations of this Museum dating back to the International Exhibition in the late nineteenth century. It is an ongoing repository for the exhibition of the finest examples of the skill and industry of the country and has an educational and research role in these areas as part of its operation.</p> <p>In this context, it has social significance for many Sydneysiders for whom the Powerhouse Museum represents an important educational and cultural experience and a communal commitment to honouring the past and those who have been significant in the evolution of modern Australian society.</p>
Comparisons:	White Bay Power Station; Balmain Power Station (demolished); Bunnerong Power Station (demolished).

## C. Description

### 6. Existing place or object

Description:	<p>The remains of the Ultimo Power House are four interconnected buildings which were the Engine-house and Turbine Hall, the (2nd) Boilerhouse, the Office Building and the Switchhouse. All equipment from the power station phase has been removed from the interiors and exteriors of the buildings and the buildings survive as external shells, adapted to the new use as a Museum.</p> <p><b>OFFICE BUILDING</b></p> <p>The office building is a three storey symmetrical building, 30m wide</p>
--------------	--



# State Heritage Register Nomination Form



NSW GOVERNMENT  
Department of Planning



and 14m deep, with seven bays, built in a simplified Italian Renaissance Classical style. It faces William Henry Street and is partly obscured by the William Henry Street Bridge. The rusticated stone base supports a stone plinth on which sits the brick superstructure. The articulation continues in the form of brick pilasters with a sandstone entablature, above which is a brick parapet. On the ground floor, window mullions are in the form of classical pilasters, while on the top floor they are plain. Beneath each window is a spandrel infilled with bricks in herringbone pattern. The frontispiece is in the form of an aedicule two stories high, with large-scale stone pilasters on stone pedestals, surmounted by a pediment. Within the frontispiece is an entrance having semicircular arch with a console keystone. The principal feature in the aedicule is the spandrel which identifies the building's ownership as the New South Wales Government Transport Department (NSWGTD). Surrounding the name of the building is a band of lightning bolts, a stylised representation of electricity, which passes behind a decorated floriated crest incorporating the Southern Cross. The spandrel was once surmounted by a leadlight window which bore the State Coat of Arms.

On the top floor, each pair of pilasters, on the east and west ends, is gathered over a semi-circular opening which makes the semi-circular arched windows appear recessed. The building has a distinguished architectural composition shown in brickwork, windows and facades. The bricks are very fine plastic-moulded and have a warm red-brown colour and pointed with a light red-brown mortar. The work throughout is English bond except in the spandrels where it is herringboned. The robust cedar window joinery is very fine and is consistent with the time of building. The repetition of the pilasters, spandrels and windows on the north, east, and west facades adds to the careful ornamentation of the building.

All that remains of the old boiler house on the eastern side of the Office Building is the remains of the first chimney stack and the flashing outline of the gable roof in the brickwork of the second boilerhouse.

## THE ENGINE ROOM AND TURBINE HALL

Contemporaneous with the office building but different in concept and design is the engine room. It is approximately 30m wide and 30m deep and is, in effect, an extension of the office building. The bricks, still laid in English bond, are brown-grey and the character of the building is much more utilitarian. The pilasters are strengthening devices and divide the west front (the building's only facade) into five bays with paired windows. The openings of the metal framed windows are segmental-arched and each brick sill runs the length of the window only and not the length of the bay, as on the office building. The facade is completed by a parapet which conceals the box guttering. Beneath the parapet is a double stringcourse of brickwork.



# State Heritage Register Nomination Form



NSW GOVERNMENT  
Department of Planning



The Turbine Hall, an extension eastwards of the Engine Room, is a very simple, very strong expression of the utilitarian architecture of the early 20th century and one of the prime large examples of Edwardian industrial architecture in Sydney. Its size, 56m x 31m, reflects the size of the turbo alternators it was designed to house. The facade is divided into eight bays, which are further proportioned by a horizontal band which divides the facade into sixteen elements. The west facade's principal quality is its sheer scale which is enhanced by very carefully controlled simplicity. Emphasising the main articulation of the facade is a moulded stone stringcourse at the sill level of the upper windows and a moulded stone cornice capping the top of the parapet.

The main elements are the very tall, semi-circular headed windows. These main windows have stone sills and the window bays, flanked by pilasters, terminate in stepped brick corbels and are surmounted by a stone gable cornice.

## THE SWITCH HOUSE

The switch house is a brick building, three stories on the east and two stories above ground level on the west. The west facade is divided into seven bays, the northernmost of which is given emphasis by means of a dentillated gable which incorporates a centrally-placed circular motif with herringbone infill. The remainder of the building features a dentillated segmented extension of the parapet. The brickwork between each pair of windows extends even higher and terminates in dentillated bracketed caps. All dressings, sills, lintels and caps are of rendered concrete.

## THE SECOND BOILER HOUSE

The second boiler house is the largest building in the complex, 83m long and 23m wide, and has the largest continuous facade to the east. The three tiers of windows, arranged in thirteen bays, are a vigorous architectural solution to the problem of dealing with a very tall facade. The height from string course to plinth is much greater than on the west facade of the turbine hall, which it complements.

The thirteen bays are evident on the top tier of the building, above the string course. Below that, the fourth and fifth bays from the north end were combined to form a tripartite entrance bay, which allowed access to rail trucks on the east siding. The south facade of the boiler house, although abutting the turbine hall and matching it in size, was treated somewhat differently, preserving the individuality of the building. The pilasters, their terminations in stepped corbels and the gable cornices are the same but the windows are smaller, arranged in two tiers and segmental-headed, as on the east facade.



# State Heritage Register Nomination Form



Condition of fabric and/or archaeological potential:	Good Condition
Integrity / intactness:	Adapted to house the Powerhouse Museum, the building envelopes are largely intact but the contents have been removed.
Modifications Dates:	Numerous modifications between 1899 and 1988. See History
Date you inspected the place for this description:	2015
Current use*:	Powerhouse Museum
Original or former use(s)*:	Electricity Generating Station
Further comments:	

Illustrations can be inserted as images in section J.

\* These details must be entered if you are basing the significance of the place or object on its past or present use.

## D. Historical outline

### 7. Origins and historical evolution

Years of construction*:	1897 (start year)	1899 (finish year)
Designer / architect*:	NSW Railway Commissioners / NSW Department of Public Works	
Maker/ builder:	J. Stewart & Co. Sydney	
Historical outline of place or object:	<p>The development of the tramway public transport system had its beginnings in a horse drawn tramway along Pitt Street between Circular Quay and the Redfern Railway Terminal, which opened in 1869. A steam powered network developed from the 1870s, first running through the city only, then rapidly expanding as a commuter service from suburban areas. Steep topography saw the addition of cable drawn trams in North Sydney and towards Rose Bay from the city during the 1880s. In 1893, the first complete electrically-powered tramway line opened on the north shore and its success led to the decision to adopt electric power for the tramway system overall. A single large electricity generating station was deemed necessary to provide this power and the first stage of the Ultimo Power Station opened in December, 1899.</p> <p>The first of the all-electric tramcar sheds, Ultimo Tram Depot, opened at the same time at the south end of the Power Station site (and has been separately nominated). Conversion of the tramlines proceeded rapidly and expansion of the power station followed in stages.</p>	



# State Heritage Register Nomination Form



NSW GOVERNMENT  
Department of Planning



In 1905, Ultimo Power House was the first place where turbine-driven alternators were tried in Australia and it was, until the 1940s, the location where the first examples of most major developments in power generation technology, including mechanical boiler feed and, later, the use of pulverised coal, were tried in Australia. It was also amongst the largest of any generating stations operating in Australia till the 1940s. It was a major employer and its function of power generation brought further development to the surrounding area. At the same time, its landmark chimneys were the source of ash fallout problems for local people.

In the 1920s, electrification of the suburban railway led to substantial extension and re-equipping of Ultimo Power House and the White Bay Power Station also commenced operations as the second of the New South Wales (NSW) Railway and Tramways Department generating stations. These two worked closely together until the 1950s, when all the power generation facilities of the state were brought together under the NSW Electricity Commission, a central government authority formed to deal with the chronic post-war power shortages in NSW. As the interconnected network expanded and new generation power stations were completed and brought on line, Ultimo's old machinery and city location saw its progressive redundancy and it closed in 1964. Allied to this was the closure of the tramway system, in favour of motor busses, which was underway from the 1950s and was complete by 1963. The power station was then stripped and lay dormant until the decision in 1979 to use it as the new location for the Museum of Applied Arts and Sciences (formerly the Technological Museum).

The Power Station was substantially modified for its use as the Powerhouse Museum. The interior of the buildings were cleared, new internal floors and spaces created and new buildings were erected on the western side. The Ultimo tram depot, adjacent to the power station, opened as Stage One in 1981; this later became offices, workshops, laboratories and storage for the Museum in the Powerhouse buildings. The Powerhouse Museum proper opened to the public in March 1988, as the flagship exhibition space of the Museum of Applied Arts and Sciences (MAAS).

\* These details must be entered (as shown in the guideline) if you are basing the significance of the place or object on its architectural or technical qualities or its historical period of construction.

Historical maps, photographs or other illustrations that help to explain the history of the place can be inserted in section J.

## 8. Historical themes represented

<b>National theme(s):</b>  <i>Select one or more of 1-9.</i>	3. Developing local, regional, national economies 4. Building settlements, towns and cities 5. Working 8. Developing Australia's cultural life
--	---



# State Heritage Register Nomination Form



NSW GOVERNMENT  
Department of Planning



<i>New line for each selected.</i>	
<b>State theme(s):</b>  <i>Select one or more for each above selected National theme 1-9.</i>  <i>New line for each selected.</i>	<i>Within National themes 1-3:</i> 3. Industry 3. Transport 3. Transport  <i>Within National themes 4-9:</i> 4. Towns, suburbs and villages 4. Utilities 7. Government and administration

## E. Criteria

### 9. Assessment under Heritage Council criteria of state significance

<b>A. It is important in the course or pattern of the cultural or natural history of NSW.</b>	<p>It meets this criterion of State significance because it was the first large state-owned electricity generating station in NSW and the original generating station for the supply of electricity to power the electric tramway network throughout Sydney.</p> <p>It was one of the largest and most important generating stations in NSW for many years and has associations with the electrification of the suburban tramway and railway systems and with the general reticulation of electrical power in Sydney.</p> <p>It was the site where most major technological advancements in electrical generation, including steam turbines and large-scale, alternating-current generation, were trialled by NSW electricity authorities.</p> <p>The station also played a major part in the development of the Ultimo/Pymont area.</p> <p>The Ultimo Power House was adapted to house the Museum of Applied Arts and Technology (later, the Powerhouse Museum), the principal museum of technology, manufacturing, science and craft in NSW and retains the historical, aesthetic and cultural associations of this Museum dating back to the International Exhibition in the late nineteenth century. It is an ongoing repository for the exhibition of the finest examples of the skill and industry of the country and has an educational and research role in these areas as part of its operation</p>
---	--



# State Heritage Register Nomination Form



<p><b>B. It has a strong or special association with the life or works of a person, or group of persons of importance in the cultural or natural history of NSW.</b></p>	<p>...</p> <p>It meets this criterion of State significance because the Ultimo Power House is associated with the Museum of Applied Arts and Technology (later, the Powerhouse Museum), the principal museum of technology, manufacturing, science and craft in NSW and retains the historical, aesthetic and cultural associations of this Museum dating back to the International Exhibition in the late nineteenth century.</p>
<p><b>C. It is important in demonstrating aesthetic characteristics and/or a high degree of creative or technical achievement in NSW.</b></p>	<p>It meets this criterion of State significance because the power station buildings are a landmark group of buildings which relate closely to the visual and architectural industrial context of the area. The Boilerhouse building was, in its day, one of the largest brickwork structures in the state and the chimneys were significant Sydney landmarks for seventy years.</p> <p>Furthermore, the adaptive work undertaken for the station's conversion to the Powerhouse Museum is significant both for its successful re-use of the buildings and successful integration of old and new buildings; the new building was awarded the Sulman Medal by the RAIA in 1988.</p>
<p><b>D. It has strong or special association with a particular community or cultural group in NSW for social, cultural or spiritual reasons.</b></p>	<p>It meets this criterion of State significance because the Ultimo Power House was adapted to house the Museum of Applied Arts and Technology (later, the Powerhouse Museum) and it retains the historical, aesthetic and cultural associations of this Museum dating back to the International Exhibition in the late nineteenth century. In this context, it has social significance for many Sydneysiders for whom the Powerhouse Museum represents an important educational and cultural experience and a communal commitment to honouring the past and those who have been significant in the evolution of modern Australian society. It does not appear to meet this criterion of State significance.</p>
<p><b>E. It has potential to yield information that will contribute to an understanding of the cultural or natural history of NSW.</b></p>	<p>It does not appear to meet this criterion of State significance.</p>
<p><b>F. It possesses uncommon, rare or endangered aspects of the cultural or natural history of NSW.</b></p>	<p>It meets this criterion of State significance because the Ultimo Power House and the White Bay Power Station are the only major survivors of the city-based electrical generating stations of the early twentieth century. They separately and together are significant relics of the early development of electricity generation in NSW and are important physical evidence of the scale and importance of this industry.</p>



# State Heritage Register Nomination Form



NSW GOVERNMENT  
Department of Planning



<p><b>G. It is important in demonstrating the principal characteristics of a class of cultural or natural places/ environments in NSW.</b></p>	<p>It meets this criterion of State significance because, in its size, layout and surviving physical features, it is representative of large state-owned electricity generating stations from the early twentieth century in NSW and elsewhere in Australia.</p> <p>The conversion of the Power Station into a cultural institution is itself representative of a change of use for redundant power stations which is typical of these structures world-wide.</p>
--	---

## F. Listings

### 10. Existing heritage listings

Check one box for each of the following listings:

Listed	Not listed	
<input checked="" type="checkbox"/>	<input type="checkbox"/>	Local environmental plan (LEP) - heritage item (call the local council to confirm)
<input checked="" type="checkbox"/>	<input type="checkbox"/>	Regional environmental plan (REP) - heritage item (call the local council to confirm)
<input type="checkbox"/>	<input type="checkbox"/>	LEP - Conservation area (call the local council to confirm)
<input type="checkbox"/>	<input type="checkbox"/>	Draft LEP - Draft heritage item (call the local council to confirm)
<input type="checkbox"/>	<input type="checkbox"/>	Draft LEP - Draft conservation area (call the local council to confirm)
<input type="checkbox"/>	<input type="checkbox"/>	State Heritage Register (search the register at <a href="http://www.heritage.nsw.gov.au">www.heritage.nsw.gov.au</a> )
<input checked="" type="checkbox"/>	<input type="checkbox"/>	National Trust register (call the National Trust to confirm)
<input type="checkbox"/>	<input type="checkbox"/>	Aboriginal heritage information management system (by Dept. of Environment & Conservation)
<input type="checkbox"/>	<input type="checkbox"/>	Royal Australian Institute of Architects Register of 20 <sup>th</sup> Century Architecture (call the RAlA)
<input type="checkbox"/>	<input type="checkbox"/>	National shipwreck database (search <a href="http://maritime.heritage.nsw.gov.au/public/welcome.cfm">maritime.heritage.nsw.gov.au/public/welcome.cfm</a> )
<input checked="" type="checkbox"/>	<input type="checkbox"/>	Engineers Australia list (call Engineers Australia to confirm)
<input type="checkbox"/>	<input type="checkbox"/>	National Heritage List (search Australian Heritage Database <a href="http://www.deh.gov.au/cgi-bin/ahdb/search.pl">www.deh.gov.au/cgi-bin/ahdb/search.pl</a> )
<input type="checkbox"/>	<input type="checkbox"/>	Commonwealth Heritage List (search above Australian Heritage Database)
<input checked="" type="checkbox"/>	<input type="checkbox"/>	Register of the National Estate (search above Australian Heritage Database)
<input checked="" type="checkbox"/>	<input type="checkbox"/>	NSW agency heritage and conservation section 170 register (call owner or occupier Agency)
Other listings:		

## G. Photograph

### 11. Image 1



# State Heritage Register Nomination Form



NSW GOVERNMENT  
Department of Planning



Principal photograph of place or object:



Subject of photo:	The Ultimo Power House Office Building
Date of photo:	13/11/2015
Photographer:	TB
Copyright holder:	National Trust of Australia (NSW)

Include additional photographs and images in section J.

If possible, please also provide a high resolution, publication-quality copy of this image saved to disk (or as non-digital prints) with the signed hard-copy of the nomination form.

## H. Author

### 12. Primary author of this form

Your name:	Mr	Tony (first)	Brassil (family)
Organisation:	National Trust of Australia (NSW)		
Position:	Advocacy		
Daytime phone number:	02 9258 0123		
Fax number:			
Postal address:	PO Box 518 (street address or postal box)		
	Sydney (suburb or town)		
	NSW (state)		2000 (post code)
Email address:	tbrassil@nationaltrust.com.au		
Date form completed:	10/11/2015		

### 13. References used for completing this form



# State Heritage Register Nomination Form



	Author	Title	Publisher	Repository / location	Year published
1.	Glendenning L	The Power House, Ultimo	Report for the Department of Public Works		1982
2.	Don Godden & Associates	Ultimo Power House – History and Technology	Report for the Government Architects Branch		1984
3.	Don Godden & Associates	Ultimo Power House – Four Building Monographs	Report for the MAAS		1986
4.	Godden Mackay Pty Ltd	Tramway Workshops, Depots and Substations – Survey and Assessment	Report for the National Trust of Australia (NSW)		1994
5.	Institution of Engineers, Australia	Historic Engineering Marker - Nomination Report	The Institution of Engineers, Australia		1994
6.					
7.					
8.					
9.					
10.					
11.					
12.					

## 14. Signed by author

<p><i>F. BRASSIL</i></p> <p>Author (sign and print name)</p>	<p>13 / 11 / 2015</p> <p>Dated</p>
--	------------------------------------

## 15. Signed by copyright holder(s) of image(s)

<p><i>Graham Quint</i></p> <p>Image copyright holder (sign and print name)</p>	<p>13 November 2015</p> <p>Dated</p>
--	--------------------------------------



# State Heritage Register Nomination Form



NSW GOVERNMENT  
Department of Planning



Image copyright holder (sign and print name)	Dated
Image copyright holder (sign and print name)	Dated

Signing 14 and 15 confirms the author of this form and copyright holder(s) of images give permission for the Heritage Branch to use non-confidential information and images entered in this form for any purpose related to processing the nomination. Possible uses include (but are not limited to) publication on the Heritage Branch website, newsletter, reports or other publications. The author of the form, image copyright holder(s) and photographer(s) will be acknowledged when published.

## I. Nominator

### 16. Nominator to be contacted by Heritage Branch

Name:	Mr	Graham (first)	Quint (family)
Organisation:	National Trust of Australia (NSW)		
Position in organisation:	Advocacy Director		
Daytime phone number:	02 9258 0123		
Fax number:			
Postal address:	GPO Box 518 (street address or postal box)		
	Sydney (suburb or town)		
	NSW (state)		2000 (post code)
Email address:	gquint@nationaltrust.com.au		

Alternate contact name:	Mr	Tony (first)	Brassil (family)
Position in organisation:	Advocacy		
Daytime phone number:	02 9258 0123		
Fax number:			
Postal address:	GPO Box 518 Sydney NSW 2000		
Email address:	tbrassil@nationaltrust.com.au		

### 17. Reasons for nomination

Background or reasons for nomination:	<p>The Ultimo Powerhouse is clearly of State significance for its role both as an electricity generating station and as the venue for the Powerhouse Museum. Recent speculation regarding its future highlighted the fact that, owing to its ownership by the State, its future had been assumed to be protected and that its statutory listing status was below its known level of significance.</p>
---------------------------------------	---

### 18. Form signed by nominator for submitting



# State Heritage Register Nomination Form



NSW GOVERNMENT  
Department of Planning



13 November 2015

GRAHAM QUINT

Nominator (sign and print name)

Dated

## CHECKLIST



Spell check your form - double click here (or F7)

Before submitting this form, check that you have:

- ☒ completed all yellow sections, and other sections marked as essential.
- ☒ completed blue sections wherever possible.
- ☒ explained why the place or object is *state* significant in the statement of state significance.
- ☒ explained *how* one or more of the criterion has been fulfilled for listing.
- ☐ inserted photographs, maps and other illustrations as digital or scanned images.
- ☒ acknowledged all sources and references you used.
- ☐ signed and dated this form.
- ☐ obtained the nominator's and image copyright holders' signatures.
- ☐ if possible, attached a disk (or non-digital prints) for posting select image/s of high resolution, suitable for publication.

## TO SUBMIT THIS NOMINATION:

<b>Post all of the following:</b> <ol style="list-style-type: none"><li>1. a signed hard-copy of the form;</li><li>2. an electronic copy of the completed form saved to disk (unless you prefer to email it separately); and</li><li>3. other attachments, such as high-resolution copies of photographs suitable for publication.</li></ol>	<b>Addressed to:</b> <p>The Director Heritage Branch NSW Department of Planning Locked Bag 5020 Parramatta NSW 2124</p> <hr/> <b>If an electronic copy of the form is not posted, email it instead to:</b> <p><a href="mailto:nominations@planning.nsw.gov.au">nominations@planning.nsw.gov.au</a></p>
--	--



# State Heritage Register Nomination Form

## J. Additional photographs, maps or other images

Image 2

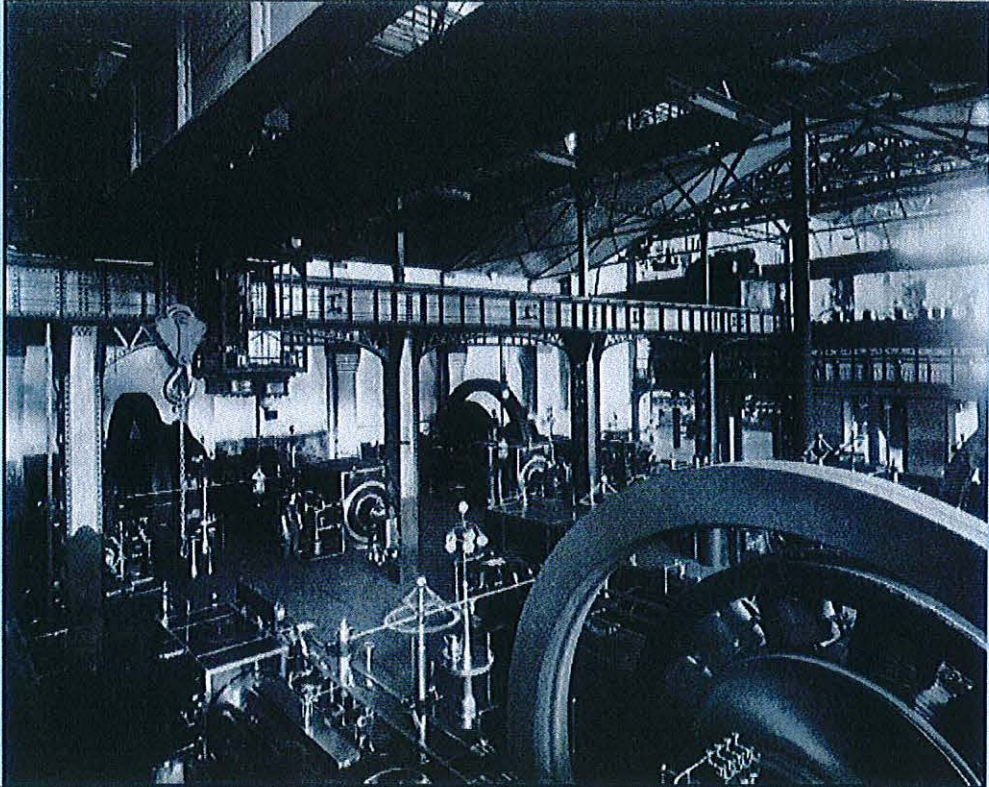
Photograph or other image:	
Subject of image:	The interior of Ultimo power station photographed in 1905 showing the four horizontal steam engine generator sets in the Engine Hall. In the background is the rear of the A.C. Switch Galley on the mezzanine.
Date of image:	1905
Photographer or author:	NSW Government Printing Office
Copyright holder:	No Copyright restrictions

Image 3



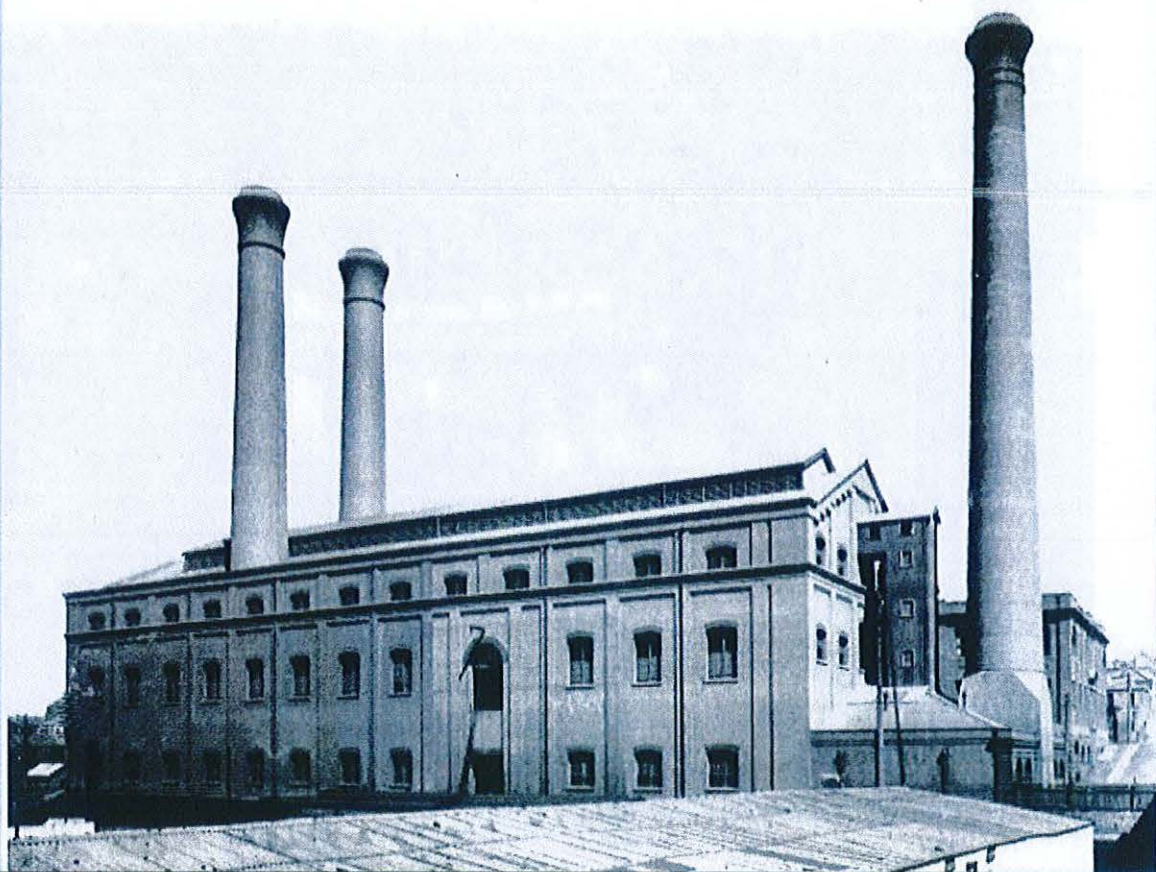
# State Heritage Register Nomination Form



NSW GOVERNMENT  
Department of Planning



Photograph  
or other  
image:



Subject of image:	The north side of the Ultimo Power House in circa 1905, showing the boiler house at full size and the three landmark chimneys
Date of image:	1905
Photographer or author:	NSW Government Printing Office
Copyright holder:	No Copyright restrictions



# State Heritage Register Nomination Form

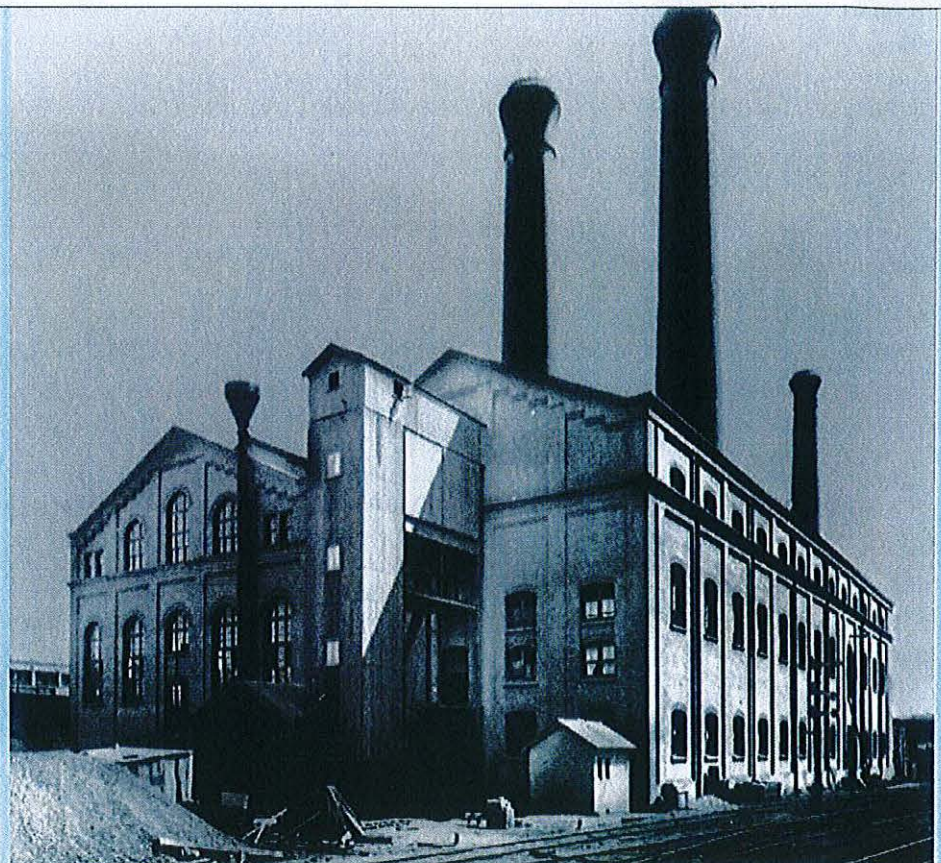


NSW GOVERNMENT  
Department of Planning



Image 4

Photograph or  
other image:



Subject of image:

The southern side of Ultimo Power House circa 1905 showing the newly completed Boiler House, with the attached coal elevator and the extended Turbine Hall on the left.

Date of image:

1905

Photographer or author:

NSW Government Printing Office

Copyright holder:

No copyright restrictions

Image 5



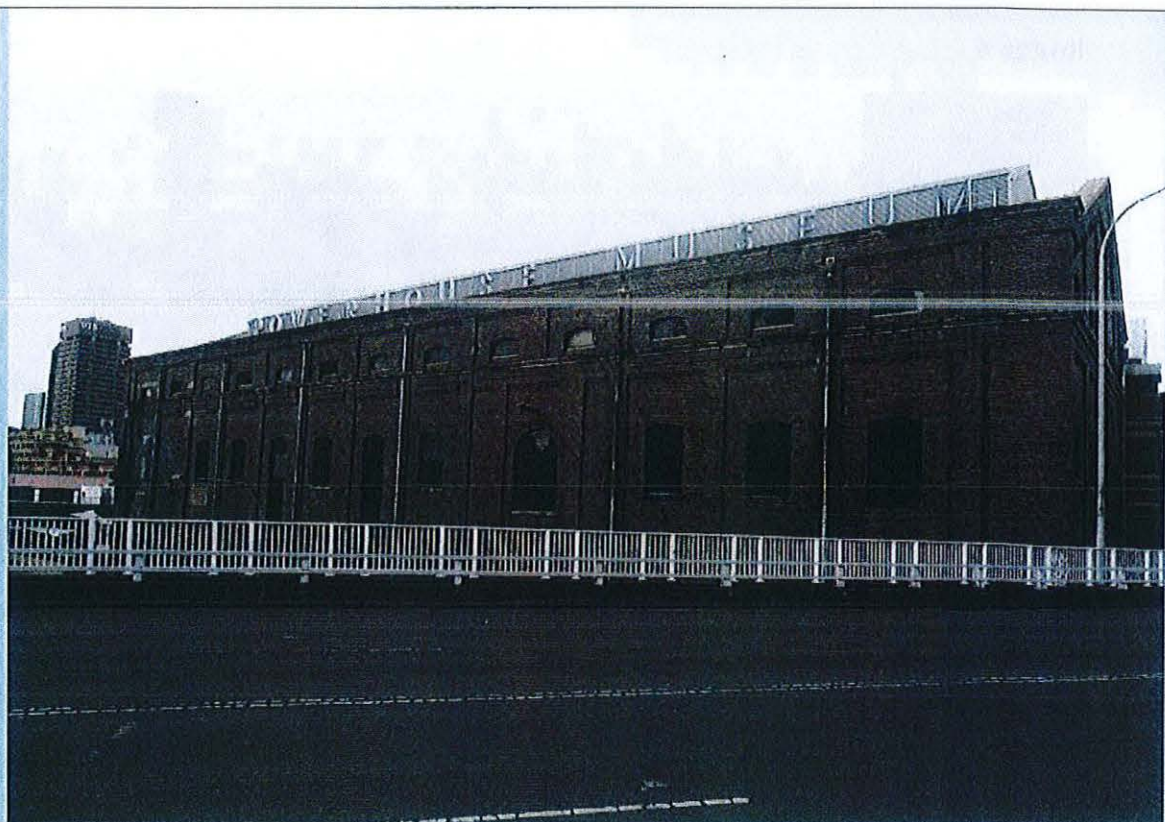
# State Heritage Register Nomination Form



NSW GOVERNMENT  
Department of Planning



Photograph  
or other  
image:



Subject of image:	Ultimo Power House - Boiler House
Date of image:	13/11/2015
Photographer or author:	TB
Copyright holder:	National Trust of Australia (NSW)



# State Heritage Register Nomination Form

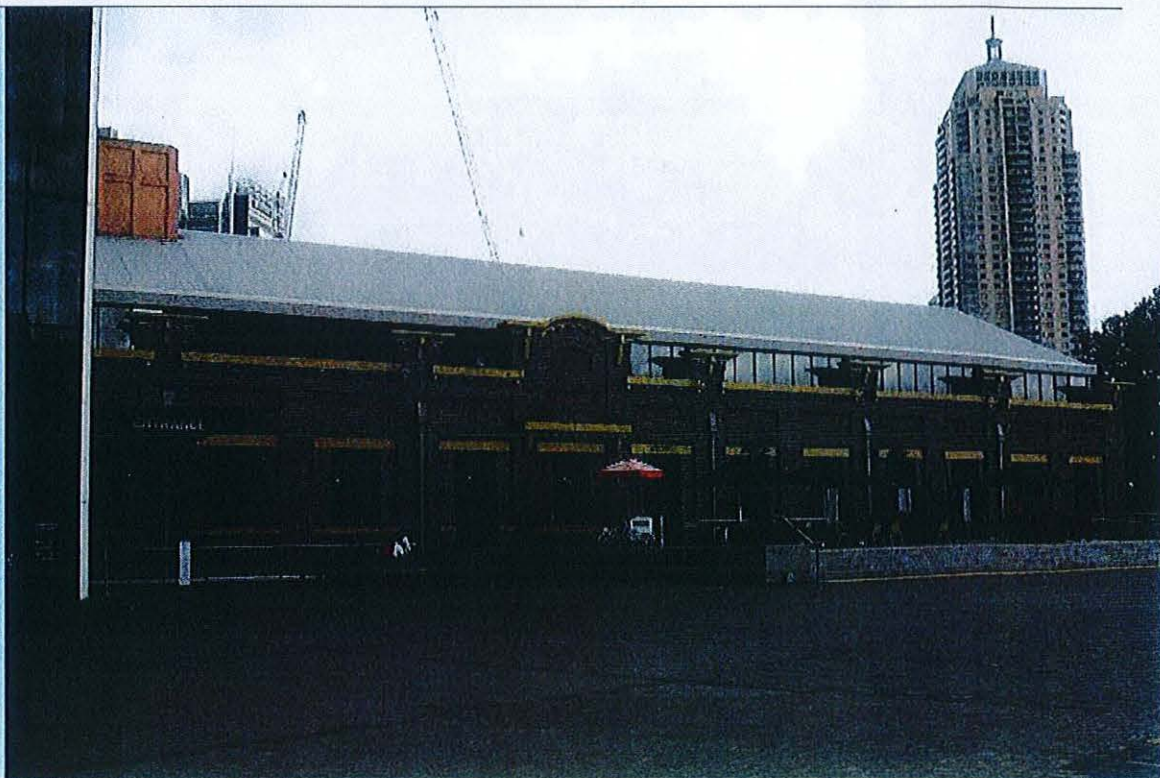


NSW GOVERNMENT  
Department of Planning



Image 6

Photograph  
or other  
image:



Subject of image:	Ultimo Power House - SwitchHouse
Date of image:	13/11/2015
Photographer or author:	TB
Copyright holder:	National Trust of Australia (NSW)

Image 7



# State Heritage Register Nomination Form



NSW GOVERNMENT  
Department of Planning



Photograph  
or other  
image:



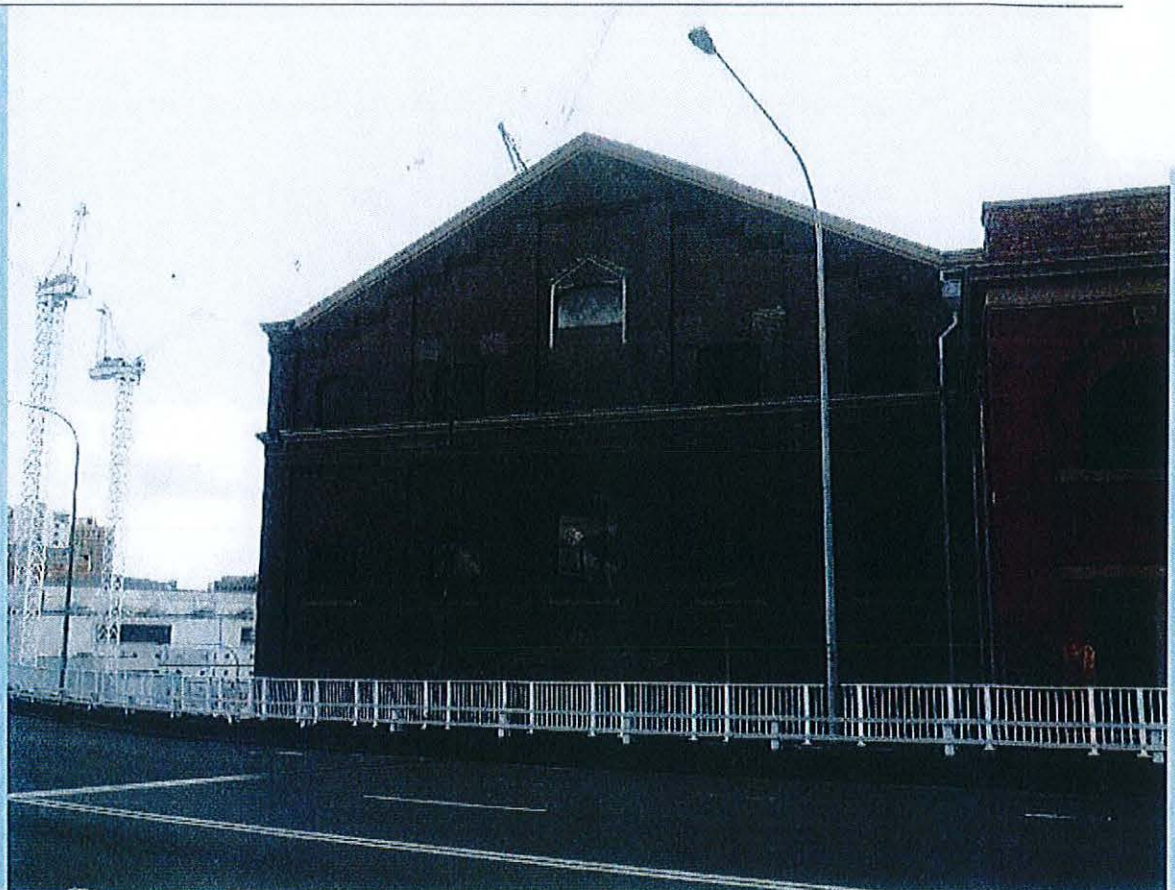
Subject of image:	Ultimo Power House - SwitchHouse
Date of image:	13/11/2015
Photographer or author:	TB
Copyright holder:	National Trust of Australia (NSW)



# State Heritage Register Nomination Form

Image 8

Photograph or other image:



Subject of image:	Ultimo Power House - Boiler House - north end facade
Date of image:	13/11/2015
Photographer or author:	TB
Copyright holder:	National Trust of Australia (NSW)

Image 9

Photograph or other image:

Subject of image:	
Date of image:	
Photographer or author:	
Copyright holder:	



# State Heritage Register Nomination Form



NSW GOVERNMENT  
Department of Planning



## Image 10

Photograph or other image:	
Subject of image:	
Date of image:	
Photographer or author:	
Copyright holder:	

## Image 11

Photograph or other image:	
Subject of image:	
Date of image:	
Photographer or author:	
Copyright holder:	



# State Heritage Register Nomination Form



## Image 12

Photograph or other image:	
Subject of image:	
Date of image:	
Photographer or author:	
Copyright holder:	

## Image 13

Photograph or other image:	
Subject of image:	
Date of image:	
Photographer or author:	
Copyright holder:	



# State Heritage Register Nomination Form



NSW GOVERNMENT  
Department of Planning



## Image 14

Photograph or other image:	
Subject of image:	
Date of image:	
Photographer or author:	
Copyright holder:	

## Image 15

Photograph or other image:	
Subject of image:	
Date of image:	
Photographer or author:	
Copyright holder:	