



# Road Toll Update for NSW

up to and including

Monday, 05 July 2021

**Fatalities advised since last update issued: 1**

**Fatalities excluded since last update issued: 0**

CALENDAR YEAR TO MIDNIGHT 05 July						12-MONTH PERIOD ENDING 05 July				
	2021 (Prelim)	2020 (Prelim)	DIFF.	3-YEAR AVERAGE	DIFF.	2021 (Prelim)	2020 (Prelim)	DIFF	3-YEAR AVERAGE	DIFF.
<b>Fatal crashes</b>	<b>140</b>	<b>135</b>	<b>5</b>	<b>154</b>	<b>-14</b>	<b>277</b>	<b>298</b>	<b>-21</b>	<b>327</b>	<b>-50</b>
<b>Fatalities</b>										
Driver	71	61	10	75	-4	150	139	11	164	-14
Passenger	16	20	-4	27	-11	36	47	-11	62	-26
Motorcyclist	34	23	11	25	9	61	63	-2	56	5
Pedestrian	25	33	-8	32	-7	40	54	-14	59	-19
Pedal cyclist	4	10	-6	8	-4	8	16	-8	12	-4
Other	0	0	0	0	0	0	0	0	0	0
<b>Total Killed</b>	<b>150</b>	<b>147</b>	<b>3</b>	<b>167</b>	<b>-17</b>	<b>295</b>	<b>319</b>	<b>-24</b>	<b>353</b>	<b>-58</b>

\* Motorcyclist and pedal cyclist includes passengers

<b>PRELIMINARY 2020 TOTALS:</b>	<b>Fatal crashes 272</b>	<b>Fatalities 292</b>
---------------------------------	--------------------------	-----------------------

Preliminary Data - Note: Fatalities will be removed from statistics if subsequent Police or Coronial investigation shows that they did not fall within National reporting guidelines. Fatalities will be added from a crash occurring prior to today's date where a person subsequently dies within 30 days or the crash is reported late. Typically, these variations may result in a statewide annual decrease of up to 12 fatalities from the initial preliminary figure. Fatalities are deaths which occurred within 30 days of a crash as a result of injuries received in the crash. The crash must have occurred within the surveyed road reserve.



# Road Toll Update for NSW

up to and including

Monday, 05 July 2021

## NSW Road Toll Statistics: Up to and including 05 July 2021

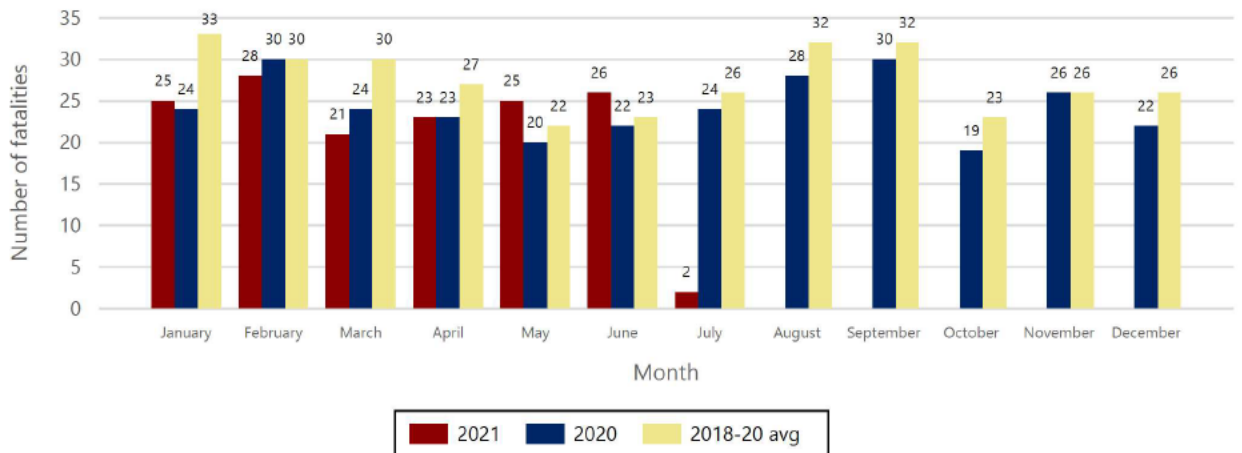
	2021	2020	+/-	% change
July to date	2	4	-2	-50.0
Calendar year to date	150	147	3	2.0
12-month period to date	295	319	-24	-7.5

NSW 30% reduction target : 294 , currently 1 over target

### Fatalities 12-month moving total - 2016 to date



### Road fatality comparative statistics by month for 2020, 2021 and the average for the 3-year period 2018-2020



	2021	2020
Data completeness status	(Prelim)	(Prelim)

Preliminary Data - Note: Fatalities will be removed from statistics if subsequent Police or Coronial investigation shows that they did not fall within National reporting guidelines. Fatalities will be added from a crash occurring prior to today's date where a person subsequently dies within 30 days or the crash is reported late. Typically, these variations may result in a statewide annual decrease of up to 12 fatalities from the initial preliminary figure. Fatalities are deaths which occurred within 30 days of a crash as a result of injuries received in the crash. The crash must have occurred within the surveyed road reserve.

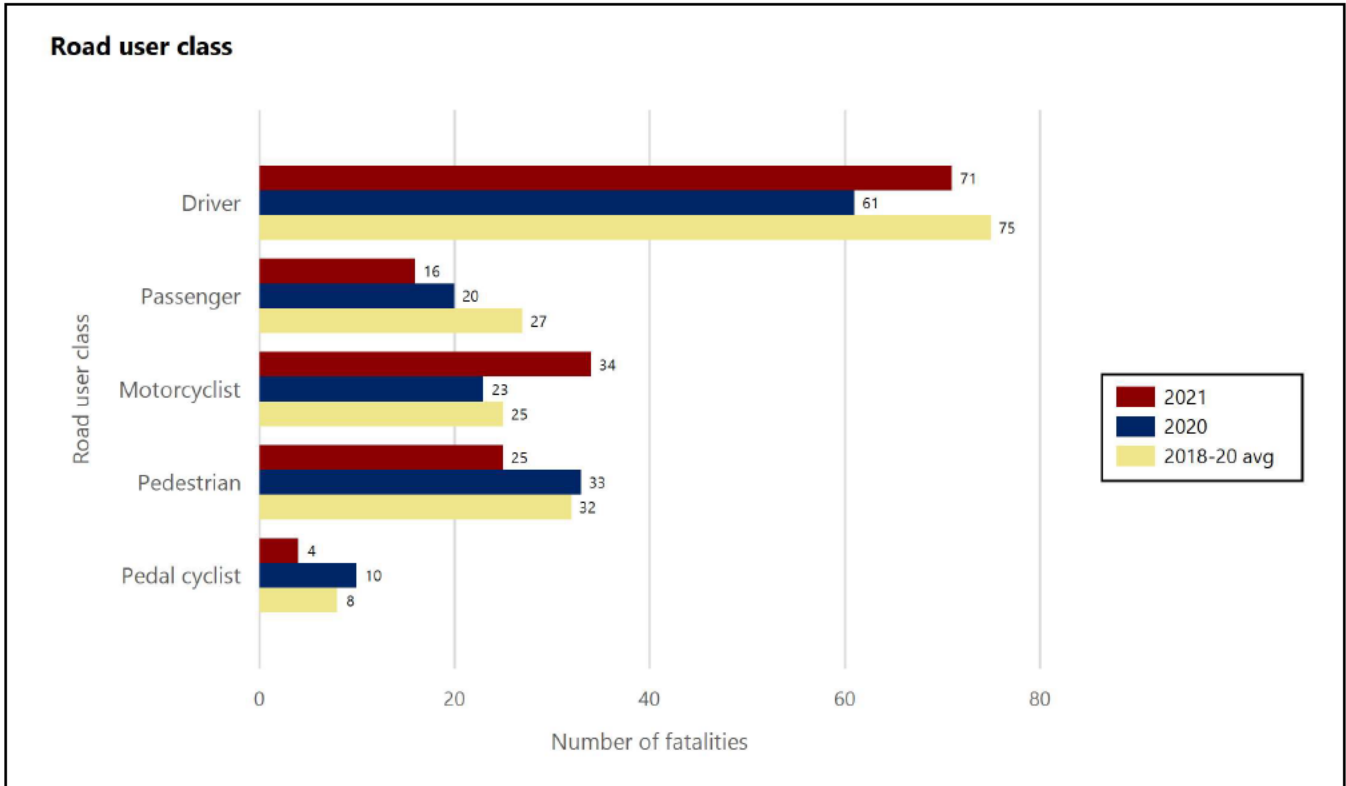


# Road Toll Update for NSW

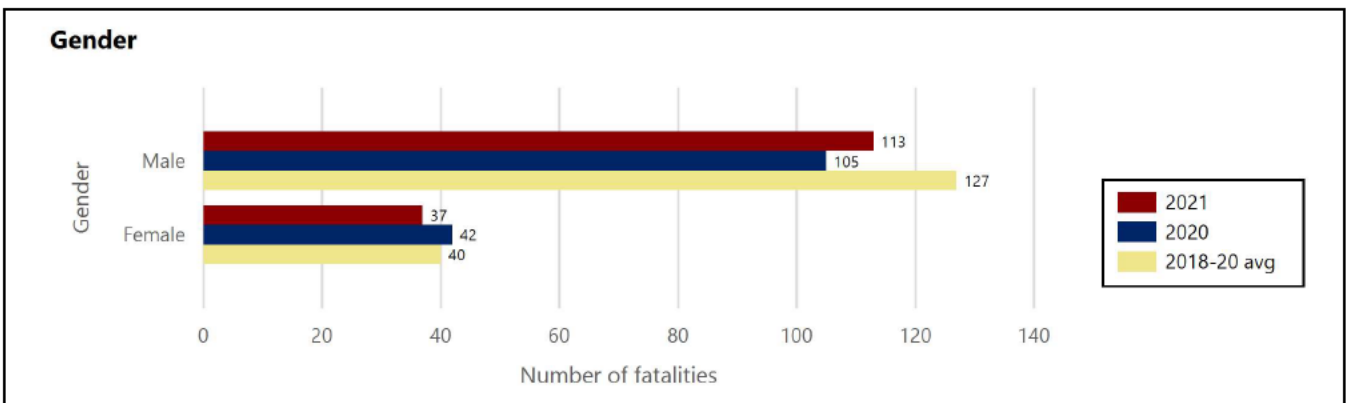
up to and including

Monday, 05 July 2021

**Road fatality comparative statistics for the period 01 January to 05 July 2020, 2021 and the average for the same period in 2018, 2019 and 2020**



Motorcyclist & pedal cyclist includes passenger



Excludes unknown gender

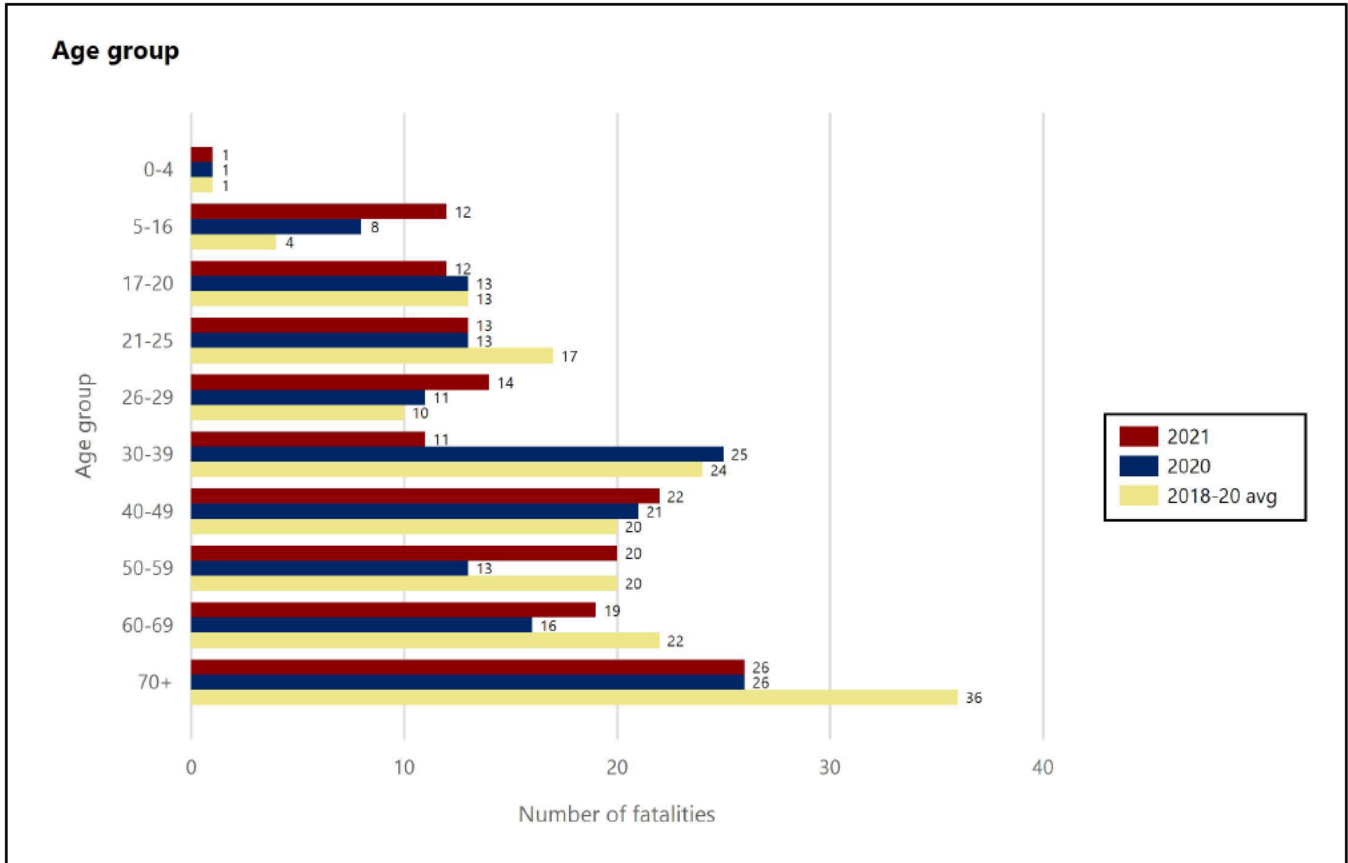


# Road Toll Update for NSW

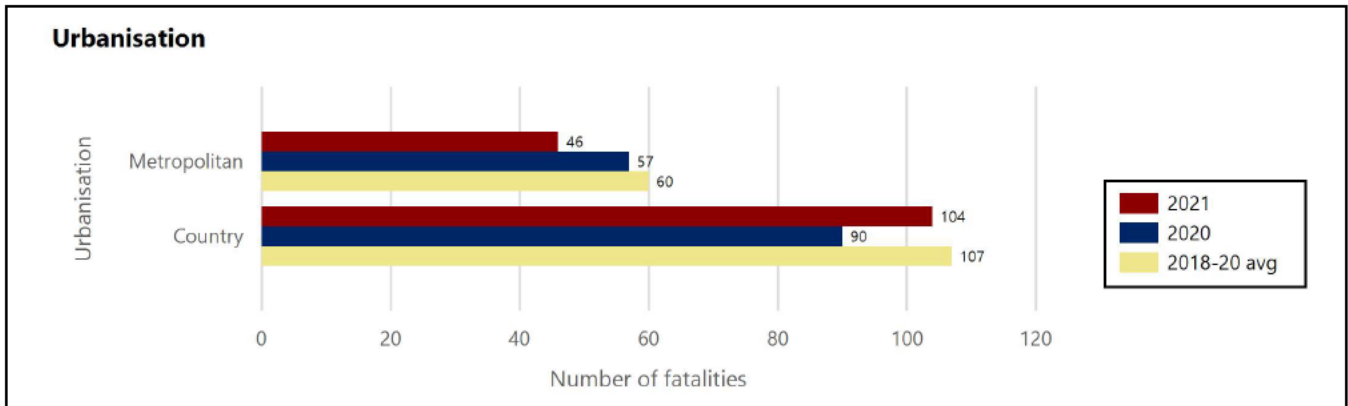
up to and including

Monday, 05 July 2021

Road fatality comparative statistics for the period 01 January to 05 July 2020, 2021 and the average for the same period in 2018, 2019 and 2020



Excludes unknown age



\* Fatality data are preliminary and subject to change



## Road Toll Update for NSW

up to and including

Monday, 05 July 2021

### Road fatality comparative statistics for the period 01 January to 05 July 2020, 2021 and the average for the same period in 2018, 2019 and 2020

Road user class	2021	2020	+/-	% change	3-year average
Driver	71	61	10	16.4	75
Passenger	16	20	-4	-20.0	27
Motorcyclist	34	23	11	47.8	25
Pedestrian	25	33	-8	-24.2	32
Pedal cyclist	4	10	-6	-60.0	8

Motorcyclist & pedal cyclist includes passenger

Gender	2021	2020	+/-	% change	3-year average
Male	113	105	8	7.6	127
Female	37	42	-5	-11.9	40

Excludes unknown gender

Age group	2021	2020	+/-	% change	3-year average
0-4	1	1	0	0.0	1
5-16	12	8	4	50.0	4
17-20	12	13	-1	-7.7	13
21-25	13	13	0	0.0	17
26-29	14	11	3	27.3	10
30-39	11	25	-14	-56.0	24
40-49	22	21	1	4.8	20
50-59	20	13	7	53.8	20
60-69	19	16	3	18.8	22
70+	26	26	0	0.0	36

Excludes unknown age

Urbanisation	2021	2020	+/-	% change	3-year average
Metropolitan	46	57	-11	-19.3	60
Country	104	90	14	15.6	107

\* Fatality data are preliminary and subject to change