





2011/Jun	24	0	24	16	6	22	42	15	57	36	2	38	30	34	64	86	71	157	391	24	415	346	595	941	1167	1831	2998
2011/Jul	17	0	17	26	11	37	51	20	71	30	2	32	40	29	69	87	56	143	434	31	465	364	505	869	1235	1594	2829
2011/Aug	11	0	11	20	6	26	35	16	51	35	5	40	32	30	62	91	55	146	347	37	384	330	566	896	1089	1887	2976
2011/Sep	10	2	12	23	2	25	38	11	49	37	0	37	28	32	60	77	62	139	352	26	378	396	618	1014	1161	1863	3024
2011/Oct	17	0	17	13	7	20	34	16	50	45	1	46	42	30	72	109	57	166	397	37	434	434	606	1040	1361	1822	3183
2011/Nov	16	1	17	16	7	23	39	17	56	30	1	31	35	20	55	73	55	128	306	21	327	352	590	942	1103	1853	2956
2011/Dec	13	1	14	29	11	40	57	18	75	39	2	41	50	22	72	106	54	160	374	35	409	521	603	1124	1465	1757	3222
2012/Jan	19	0	19	25	15	40	60	25	85	36	2	38	37	24	61	99	53	152	319	35	354	485	654	1139	1366	1795	3161
2012/Feb	15	4	19	14	7	21	39	22	61	27	1	28	40	38	78	89	61	150	293	37	330	407	660	1067	1134	1949	3083
2012/Mar	11	2	13	23	12	35	44	18	62	31	1	32	31	31	62	81	69	150	344	31	375	427	621	1048	1243	2002	3245
2012/Apr	23	0	23	15	14	29	52	24	76	37	1	38	45	31	76	98	58	156	387	29	416	433	544	977	1302	1619	2921
2012/May	17	0	17	17	14	31	42	22	64	37	4	41	29	20	49	87	51	138	344	26	370	310	529	839	1052	1788	2840
2012/Jun	14	0	14	17	5	22	36	21	57	31	3	34	28	27	55	77	53	130	371	28	399	282	469	751	1049	1550	2599
2012/Jul	19	0	19	16	4	20	43	15	58	36	4	40	29	24	53	87	53	140	358	24	382	322	497	819	1110	1552	2662
2012/Aug	13	0	13	13	13	26	40	24	64	33	1	34	23	29	52	76	62	138	307	22	329	263	591	854	1003	1835	2838
2012/Sep	6	3	9	14	10	24	26	18	44	34	2	36	37	37	74	93	76	169	318	36	354	360	593	953	1084	1853	2937
2012/Oct	12	0	12	13	11	24	33	20	53	38	3	41	24	24	48	79	50	129	332	31	363	359	613	972	1112	1846	2958
2012/Nov	14	1	15	14	13	27	32	31	63	27	4	31	45	27	72	80	59	139	311	32	343	359	617	976	1123	1888	3011
2012/Dec	12	2	14	18	21	39	40	25	65	47	1	48	45	32	77	123	56	179	396	39	435	503	654	1157	1479	1850	3329
2013/Jan	11	0	11	21	14	35	36	25	61	24	4	28	43	48	91	85	87	172	304	27	331	468	564	1032	1314	1677	2991
2013/Feb	20	0	20	23	11	34	50	28	78	20	0	20	32	22	54	69	49	118	277	21	298	346	555	901	1025	1783	2808
2013/Mar	9	0	9	23	12	35	41	21	62	29	4	33	55	35	90	102	66	168	363	36	399	416	626	1042	1270	1932	3202
2013/Apr	11	0	11	10	19	29	22	27	49	21	2	23	27	19	46	59	51	110	332	29	361	307	526	833	1051	1588	2639
2013/May	11	1	12	23	13	36	42	21	63	27	2	29	27	24	51	77	60	137	320	33	353	309	520	829	1023	1753	2776
2013/Jun	12	0	12	14	7	21	35	19	54	40	2	42	32	23	55	92	54	146	365	30	395	311	483	794	1078	1637	2715
2013/Jul	17	0	17	22	5	27	44	11	55	22	3	25	20	34	54	62	69	131	337	27	364	264	501	765	952	1577	2529
2013/Aug	11	0	11	17	15	32	34	23	57	29	1	30	28	24	52	73	57	130	325	21	346	311	587	898	1009	1796	2805
2013/Sep	14	0	14	26	12	38	47	22	69	26	3	29	27	39	66	69	70	139	310	25	335	330	546	876	1053	1711	2764
2013/Oct	12	1	13	23	6	29	42	15	57	30	3	33	19	32	51	62	66	128	307	30	337	325	518	843	1038	1752	2790
2013/Nov	7	0	7	12	9	21	29	20	49	26	1	27	34	14	48	73	48	121	323	28	351	354	501	855	1153	1729	2882
2013/Dec	10	0	10	26	15	41	48	26	74	36	3	39	30	43	73	81	70	151	394	31	425	423	620	1043	1357	1807	3164
2014/Jan	7	0	7	16	11	27	29	20	49	22	0	22	35	19	54	73	41	114	264	35	299	445	509	954	1251	1647	2898
2014/Feb	3	0	3	12	4	16	20	9	29	20	4	24	16	28	44	43	63	106	269	32	301	275	499	774	917	1667	2584
2014/Mar	6	0	6	15	11	26	27	26	53	30	1	31	40	29	69	91	61	152	298	30	328	349	579	928	1089	1889	2978
2014/Apr	8	0	8	8	8	16	22	18	40	37	0	37	33	24	57	85	44	129	321	18	339	281	447	728	952	1454	2406
2014/May	7	0	7	15	9	24	29	22	51	30	4	34	27	26	53	69	58	127	330	20	350	271	552	823	940	1662	2602
2014/Jun	9	2	11	11	6	17	25	18	43	28	3	31	16	21	37	61	56	117	281	27	308	202	452	654	783	1454	2237

^ Shows the results of a statistical test for a significant upward or downward trend in the monthly number of criminal incidents recorded. Where the trend is significant (i.e.  $p < .05$ ) the percentage change in the number of incidents between the last 12-month period and the preceding 12-month period is shown. Significant upward trends are highlighted in red; significant downward trends are highlighted in yellow. 'Stable' indicates there was no significant upward or downward trend and 'nc' indicates that the number of incidents recorded was too small for a reliable trend test to be performed.

Source: NSW Bureau of Crime Statistics and Research

Reference: sr14-12303

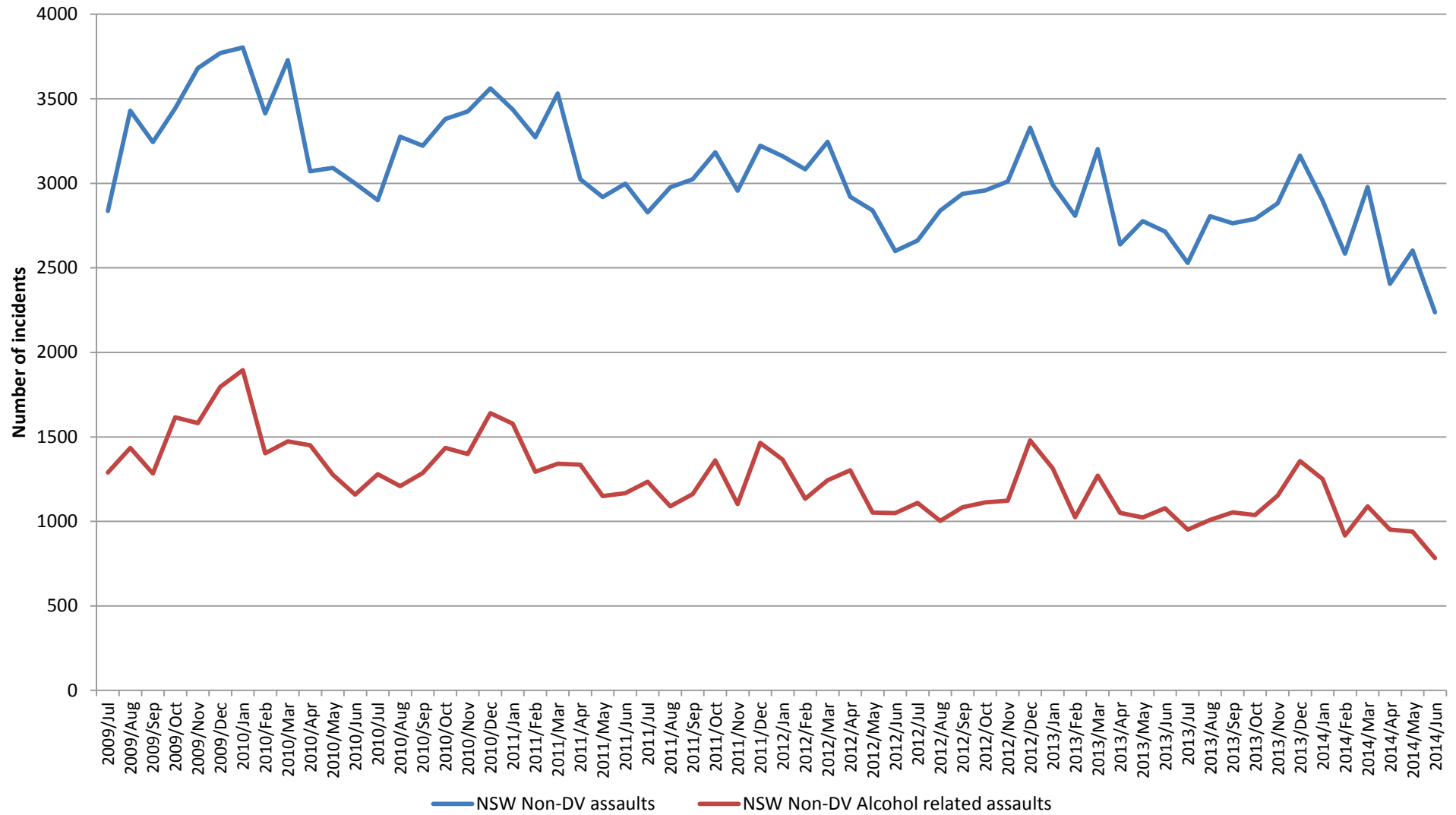
Please retain this reference number for future correspondence

**NOTE:** Data sourced from the NSW Bureau of Crime Statistics and Research must be acknowledged in any document (electronic or otherwise) containing that data. The acknowledgement should take the form of **Source: NSW Bureau of Crime Statistics and Research**

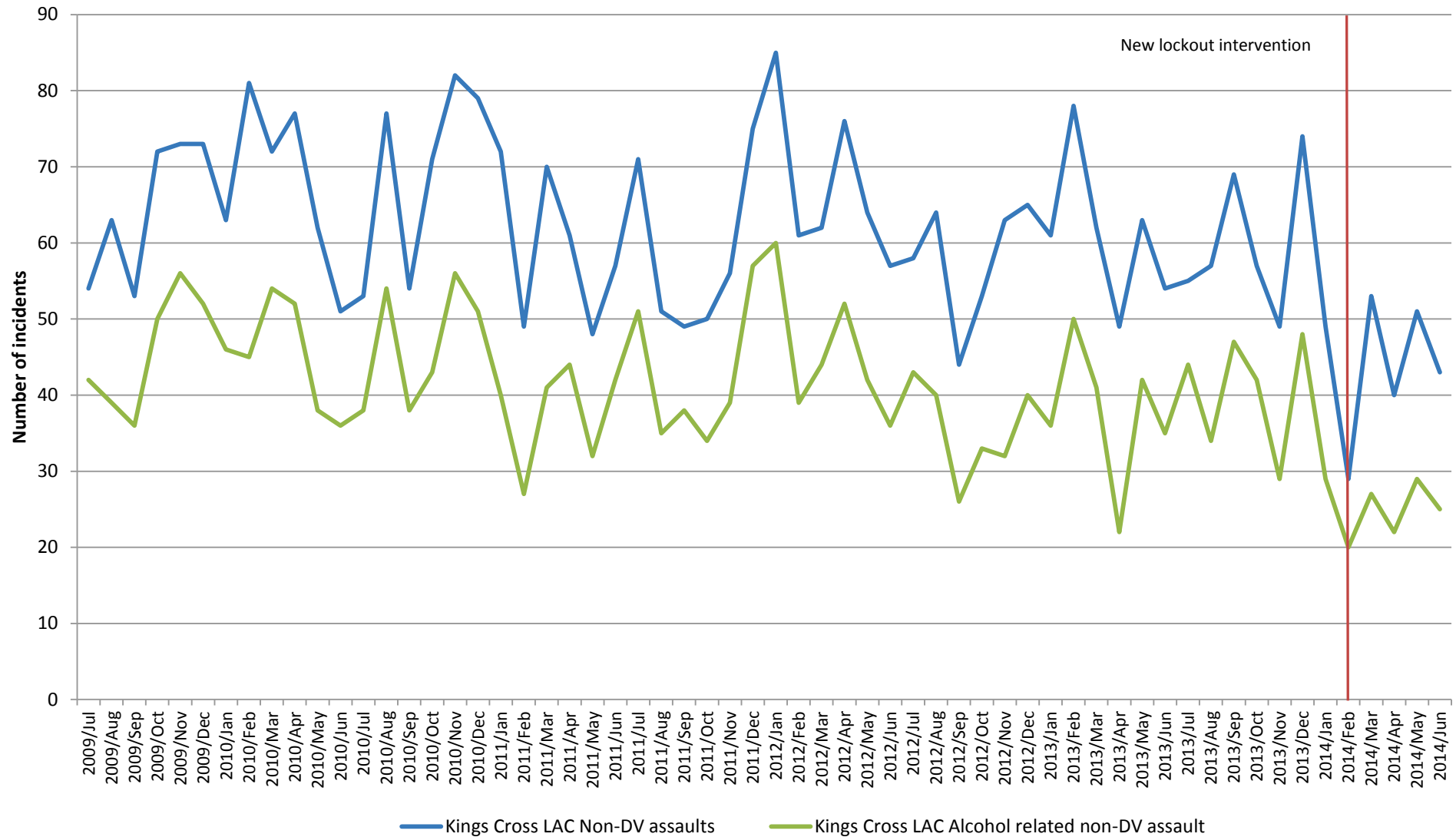
\* Total includes all premise types: business/commercial, outdoor/public place, recreation, utilities, industrial, adult entertainment, residential, carpark, education, health, law enforcement, licensed premises, religious, rural industry, marine transport, vehicle, unknown, public transport and firearms premise

Note: Alcohol related only captures incidents which police know to be alcohol related.

## Number of incidents of non-domestic violence related assault, by whether alcohol related, NSW, July 2009 to June 2014



## Number of incidents of non-domestic violence related assault, Kings Cross Local Area Command (LAC), July 2009 to June 2014



## Number of incidents of non-domestic violence related assault, Sydney City Local Area Command (LAC), July 2009 to June 2014

