

# Emissions free modes of public transport

Committee on Transport and Infrastructure

Dr Elliot Fishman

Institute for Sensible Transport

# Progress is being made

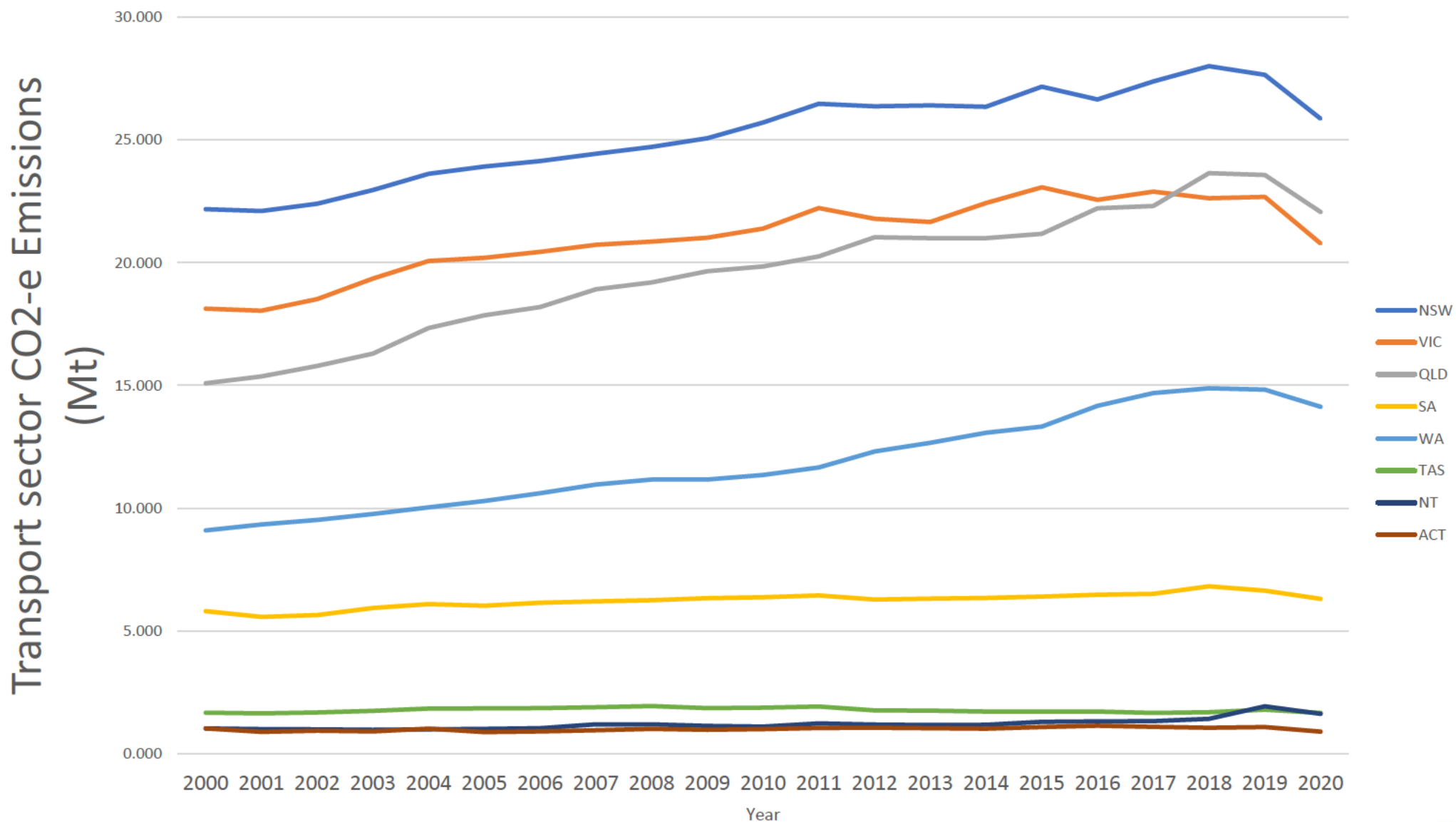
- 100 electric buses in operation in NSW
- 200 electric buses by mid 2023
- Zero Emissions Buses Transition Plan aims for 8,000 buses to be transitioned to zero emission
- Full transition by 2035 in Greater Sydney, 2047 for regional NSW





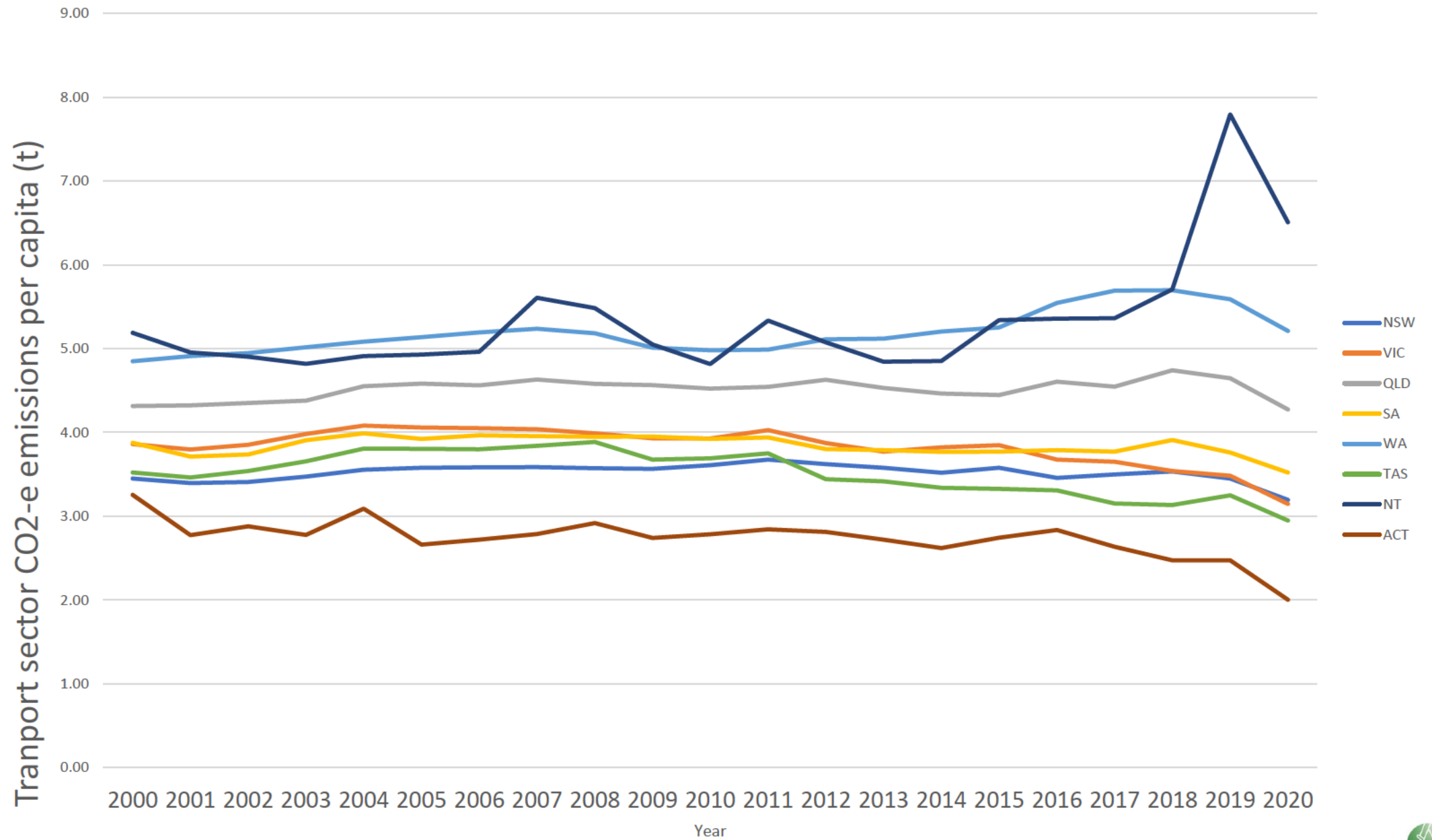


# Transport emissions by State

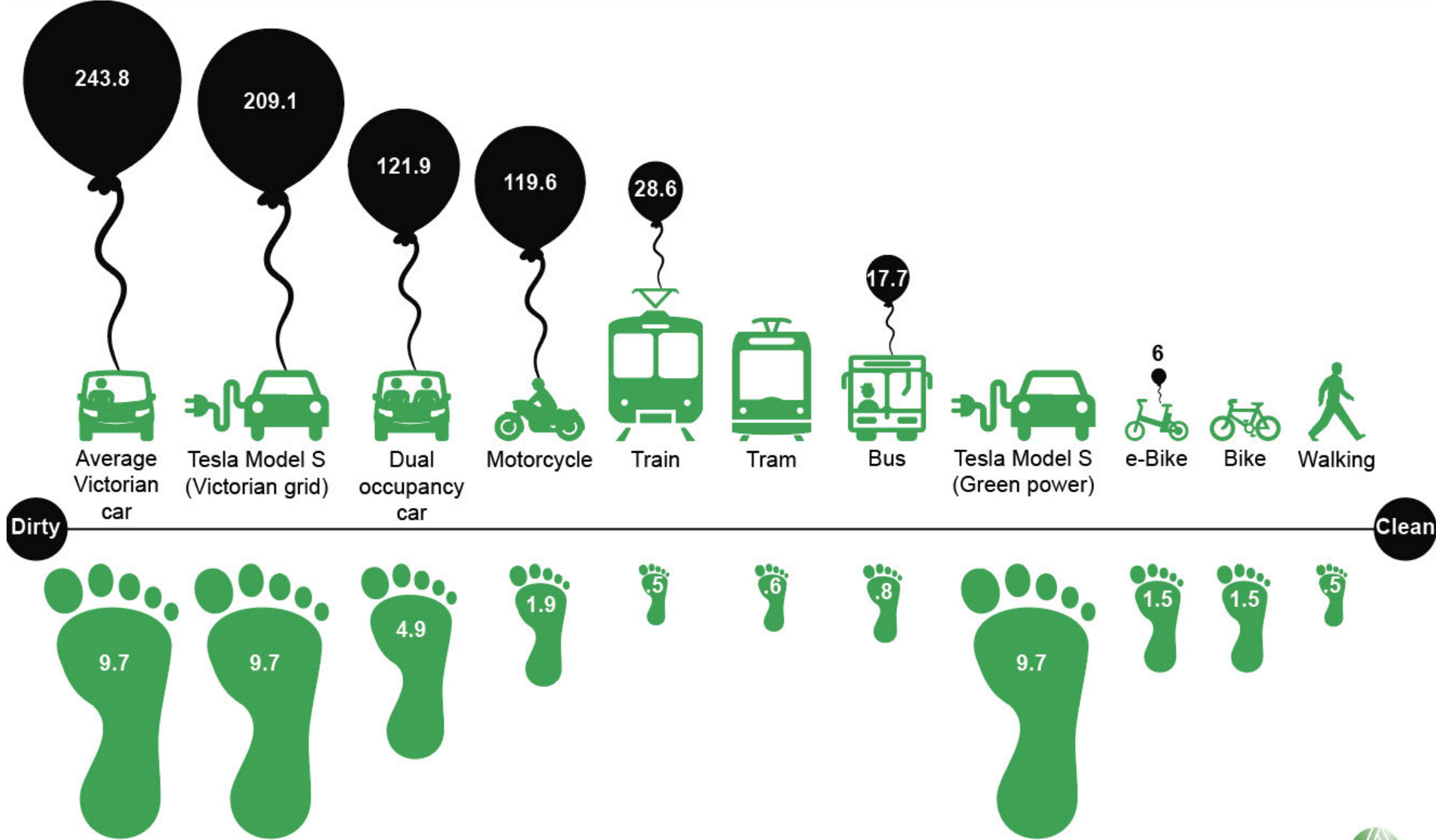


Source: DISER, State and Territory Greenhouse Gas Inventories 2020: time series data

# Transport emissions, per capita



Source: DISER, State and Territory Greenhouse Gas Inventories 2020: time series data



= Grams of CO<sub>2</sub> per person kilometre travelled
 = Space in m<sup>2</sup> required per occupant

Note: These figures are specific to Melbourne, Australia. Trams are 100% off-set by renewable energy.







# 3 Key Points

## Focus on shifting travel behaviour

- Reducing overall car use offers the biggest reductions in transport emissions

## Greening the grid

- The effectiveness of transitioning to zero emission public transport requires a zero emission electricity grid.

## Green railway and ferry networks

- Set ambitious targets to transition the regional rail and ferry networks to electric.
- Transition targets and local manufacturing commitments will stimulate local green jobs.
- Focus on railway lines that also run rail freight services to maximise opportunities to reduce further transport emissions.