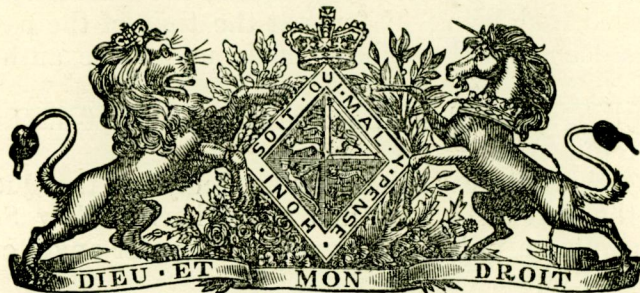


New South Wales.



ANNO PRIMO

EDWARDI VII REGIS.

Act No. 16, 1902.

An Act to consolidate the Acts relating to Wharfage and Tonnage Rates. [Assented to, 24th January, 1902.]

BE it enacted by the King's Most Excellent Majesty, by and with the advice and consent of the Legislative Council and Legislative Assembly of New South Wales in Parliament assembled, and by the authority of the same, as follows:—

PART I.

Repeal and Interpretation.

1. This Act may be cited as the "Wharfage and Tonnage Rates Act, 1901," and is divided into Parts and Divisions, as follows:—

PART I.—*Preliminary*—ss. 1-4.

A

PART

*Wharfage and Tonnage Rates.*PART II.—*Rates*—DIVISION 1.—*Wharfage rates*—ss. 5–7.DIVISION 2.—*Tonnage rates*—ss. 8–10.DIVISION 3.—*Leases of rates*—ss. 11–13.PART III.—*Goods on Wharfs*—ss. 14, 15.PART IV.—*Miscellaneous matters*—ss. 16–18.Repeal.
First Schedule.

2. (1) The Acts mentioned in the First Schedule to this Act are to the extent therein expressed hereby repealed.

Officers under Acts
hereby repealed.

(2) All persons appointed under the Act hereby repealed and holding office at the time of the passing of this Act shall be deemed to have been appointed hereunder.

Regulations under
Acts hereby repealed.

(3) All regulations made under the authority of the Act hereby repealed and being in force at the time of the passing of this Act shall be deemed to have been made under the authority of this Act.

Interpretation.
44 Vic. No. 8, s. 1.

3. In this Act, unless the context or subject-matter otherwise indicates or requires,—

“public wharf” means the Circular Quay and the Queen’s Wharf at the Port of Sydney, and any wharf in New South Wales appointed a public or legal wharf under any Act regulating the Customs;

“private sufferance wharf” means any wharf for which a sufferance is or has been granted in pursuance of any such Act as aforesaid for the landing of goods subject to the payment of Customs duties;

“wharfinger” means the owner or lessee of a private sufferance wharf, or the agent of either.

Sydney Harbour
Trust Act, 1900.

4. This Act shall be construed subject to the provisions of the Sydney Harbour Trust Act, 1900.

PART II.

RATES.

DIVISION 1.—*Wharfage rates.*Inward wharfage
rates to be levied.
Second Schedule.
Ibid. s. 3.
Act No. 52, 1899, s. 3.

5. Upon the landing on any public wharf or private sufferance wharf of any goods, merchandise, packages, or articles enumerated or mentioned in the Second Schedule hereto, there may be levied rates to be termed “Inward Wharfage Rates,” not exceeding the respective rates contained in the said schedule.

Proviso.

Provided that all goods arriving from any of the Australasian Colonies or New Zealand, landed on any public wharf and entered at the Customs-house for transhipment, shall be exempt from any wharfage rates chargeable under this Act.

6.

Wharfage and Tonnage Rates.

6. In respect of any goods, merchandise, packages, or articles laden, whether into vessels, lighters, or boats, from any public or private sufferance wharf, rates, to be termed "Outward Wharfage Rates," may be levied in accordance with the scale specified in the Second Schedule hereto for outward wharfage rates.

Outward wharfage rates.
44 Vic. No. 8, s. 4.

Second Schedule.

7. Every vessel under two hundred and forty tons registered tonnage, and every lighter, shall pay, for each day or portion of a day during which she occupies a berth for loading only at any public or private sufferance wharf, a wharfage rate of ten shillings.

Wharfage rate for small craft.
Ibid. s. 5.

DIVISION 2.—*Tonnage rates.*

8. (1) Rates may be levied upon vessels discharging their inward cargoes at any public wharf or private sufferance wharf as follows:—

Tonnage rates.
Act No. 52, 1899, s. 1.

(a) upon every such vessel fully laden and discharging the whole of her cargo, a rate of one farthing per ton per diem,

(b) upon every such vessel fully laden discharging a portion only of her cargo, and on every such vessel partly laden discharging the whole or a portion of her cargo, a rate of one half-penny per ton per diem,

for every day or part of a day that such vessel occupies a berth at any such wharf.

(2) (a) Every such vessel fully laden and discharging the whole of her cargo shall be allowed free lay days in accordance with the scale in the Third Schedule hereto, during which lay days she shall be exempt from the payment of tonnage rates.

Lay days.
Third Schedule.

(b) Every such vessel partly laden or discharging a portion only of her inward cargo shall only be allowed free lay days in accordance with the proportion which the amount of cargo she discharges bears to her gross registered tonnage where the vessel is a steam vessel, and to fifteen-tenths of her net registered tonnage where the vessel is a sailing vessel.

(c) No rate shall be leviable under this section until the free lay days have expired.

9. Any vessel of two hundred and forty tons registered tonnage or upwards, occupying a berth for loading only at any public wharf or private sufferance wharf, shall pay for each day she occupies such berth, rates as follows:—

Tonnage rates
on vessels loading only.
44 Vic. No. 8, s. 7.

(a) for the first twenty-five days from the date of occupation, a rate not exceeding one half-penny per ton per day;

(b) after the expiration of such twenty-five days, half the above rate.

10. No clearance shall be granted for any vessel liable to the payment of tonnage rates at any public wharf within the meaning of this Act, unless a receipt for the payment of such rates, signed by the proper officer or person, is presented to the Collector or other proper officer of customs.

As to clearance of vessels discharging lading, &c., at public wharfs.
Ibid. s. 8.

DIVISION

*Wharfage and Tonnage Rates.*DIVISION 3.—*Leases of rates.*

Wharfage and
tonnage rates may be
leased.

44 Vic. No. 8, s. 15.

11. The Governor may demise and let to farm by public auction, in such manner and subject to such bonds with or without sureties and to such covenants and conditions as the Treasurer may think fit, the wharfage and tonnage rates payable at any public wharf or at any defined portion of such wharf for any term not exceeding five years.

Lessee may charge
rates according to
scale.

Ibid., s. 16.

12. The lessee under any such lease may levy, demand, and recover the wharfage and tonnage rates prescribed by this Act, subject to all exemptions contained in this Act or in the Schedules hereto.

No such rates shall exceed the scales prescribed by this Act or specified in the Second Schedule.

Lessees of rates may
appoint collectors or
other necessary
servants.

Ibid., s. 17.

13. (1) During such term as the said rates or any part thereof are so leased as aforesaid to any person whomsoever, the lessee thereof may nominate and appoint such other person as he thinks necessary by writing under his hand to collect, demand, and take such rates so demised, leased, and farmed.

Powers of appointed
person.

(2) Any such person so appointed may use all lawful means for the recovery of such rates in case of non-payment or evasion as such lessee himself could do by law, and may appoint such persons as he may think necessary by writing under his hand as wharfingers or other servants.

Liability of lessee.

(3) Every such lessee shall be answerable for the conduct of every person appointed by him as aforesaid, and shall be liable for every such person's neglect, misconduct, or breach of any law or regulation respecting such rates as fully to all intents and purposes as if such lessee had personally been guilty of the same.

PART III.

GOODS ON WHARFS.

Consignees and
others may take
delivery of goods at
private wharfs.

Ibid., s. 9.

14. (1) The master of any vessel which occupies a berth at any public wharf or private sufferance wharf for the purpose of discharging inward cargo may deliver to the consignee, importer, or his agent, any goods so to be discharged without molestation or interference by the collector or wharfinger, or by any person whomsoever, and without any charge other than the respective rates authorised by this Act.

Access to wharfs.

(2) All importers and consignees, their agents and servants, shall, during custom-house hours for the discharge of such vessel, have free access to and from the ship's side whilst so discharging for the purpose of taking delivery of any such goods.

Wharfage and Tonnage Rates.

15. If any goods are landed on any public wharf or private sufferance wharf, and are not removed therefrom before the expiration of forty-eight hours thereafter, the collector, if the wharf is a public wharf, or the wharfinger, if the wharf is a private sufferance wharf, may remove and store the said goods in the King's or any bonded or free warehouse at the risk and cost of the consignee or importer thereof, subject to any lien by the owner, master, or agent of the vessel for freight or charges which may be payable on such goods.

Removal of goods
from wharves.
44 Vic. No. 8, s. 10.

PART IV.

MISCELLANEOUS MATTERS.

16. (1) For the purposes of this Act the registered tonnage of any vessel shall be determined in accordance with the provisions of the Imperial Act the Merchant Shipping Act, 1894, and the Schedules thereto and any enactments amending the same; but for ascertaining the tonnage rates leviable under this Act upon steam vessels, the gross tonnage measurement shall be deemed to be the tonnage of such vessels.

Registered tonnage,
how calculated.
Act No. 52, 1899, s. 2.

(2) The latest publication of Lloyd's Register shall be evidence of the net and gross tonnage of all vessels mentioned therein.

Evidence of tonnage.

17. Notwithstanding anything in this Act contained, the Governor may abolish altogether or reduce the scale of wharfage or tonnage rates prescribed by this Act and leviable thereunder at any public wharf, whenever in his opinion it is to the public interest so to do.

Governor may
abolish or reduce
rates at public
wharfs.
44 Vic. No. 8, s. 12.

18. Subject to the provisions of this Act, the Governor may frame regulations for the following purposes:—

Power to make
regulations.
Ibid. s. 14.

- (a) the berthing of vessels at a public wharf;
- (b) the removal of vessels from a public wharf;
- (c) the discharging of cargo and loading thereof on or from any public wharf;
- (d) the storage or removal of goods, merchandise, packages, and articles discharged on or laden from any public wharf;
- (e) the leasing of any public wharf; and
- (f) for prescribing penalties, not exceeding in any case the sum of twenty pounds, for the contravention of any such regulation, and for directing the mode of their recovery and enforcement. Every such penalty may be defined by a minimum as well as a maximum limit.

All such regulations shall, upon notification in the Gazette, have the force of law; and shall be laid before Parliament within fourteen days after such notification if Parliament is then in session, and if not then within fourteen days after the commencement of the next ensuing session.

SCHEDULES.

Wharfage and Tonnage Rates.

SCHEDULES.

Section 2.

FIRST SCHEDULE.

Reference to Act.	Title or short title.	Extent of repeal.
44 Vic. No. 8 ...	"Wharfage and Tonnage Rates Act of 1880"	The whole.
Act No. 52, 1899 .	"Tonnage Rates (Amendment) Act, 1899"	The whole.

Sections 5, 6.

SECOND SCHEDULE.

INWARD WHARFAGE RATES.

TARIFF.		s.	d.
Acids, the carboy or case	0	6
Agricultural machinery and implements—			
Drilling and sowing ...	} per ton of 40 cubic feet...	1	8
Haymaking ...			
Reaping and binding ...			
Threshing ...			
Winnowing ...			
Horse-power ...	} loose, each	0	4
Ploughs ...			
Harrows ...			
Cornshellers ...			
Alkali, loose, per ton	1	8
" in packages as drugs. (See Drugs.)	...	1	8
Alum, loose, per ton	1	8
" in packages as drugs. (See Drugs.)	...	0	2
Almonds, in bags, each	0	3
" in cask or case	1	8
Anchors, per ton weight	1	8
Animals—horses, including ponies and cobs, horned cattle, asses and mules,			
each.	1	8
" calves, sheep, goats, or pigs, each	...	0	3
Anvils, per cwt.	0	1
Apparel, wearing, per bale or case	0	9
Axle-trees, iron, per ton	1	8
Ale or beer. (See Liquids).			
Bacon, bundle or loose, per cwt.	0	1
" in case	0	4
Bags, the bale or package	0	9
Ballast, per ton	0	6
Bark, loose or in bags, the ton	1	8
Baskets, per package	0	6
" empty, each	0	1
Bellows, smiths', the pair	0	4
Billiard tables, each	3	6
Biscuits, the bag	0	2
" cask or case	0	4
Blacking, liquid, per package	0	4
" cake or paste, per package...	...	0	2
Blankets, bale or case	0	9
Blue, per box of 56lb. and under	0	2
" for each additional 56 lb. or fractional part thereof...	...	0	1

Wharfage and Tonnage Rates.

	s.	d.
Books, per package	0	4
Boots and shoes, per trunk or box	0	3
Bottles, empty, per package	0	4
Bran, per bushel	0	0 $\frac{1}{2}$
Bricks, tiles, and slates, per 500	1	6
" Fire-bricks, per 400	1	6
" Fire-lumps, slabs, and tiles, per ton weight...	1	8
Brimstone, loose, per ton	1	8
" in packages as drugs. (See Drugs.)		
Bristles, per cask or case	0	6
Brooms, per doz., loose or in bundles	0	2
Brushware, per bale or case	0	9
Buckets and pails, per dozen... ..	0	4
Butter, per cwt.	0	1
Cables, coir, hemp, Manilla, iron rope, per ton weight	1	8
Candles, per box of 28 lb. and under	0	1
Canes or rattans, per 100 bundles	1	8
" " loose, per 100	0	1
Cannon, per ton weight	1	8
Canvas, the bale or case	0	9
Carpets, the bale or case	1	0
Caraway seeds, the package... ..	0	4
Carrots, the cwt.	0	1
Carriages and carts, 4-wheeled, each	5	0
" " 2-wheeled "	2	6
Casks, empty, each	0	2
Castor oil, per package	0	2
Cement, the barrel	0	4
Chairs, packed in pieces, per package	0	4
Chalk, loose, per ton	1	8
" in casks, per package	0	4
Cheese, per cwt., loose or in cask	0	1
" in case, per package	0	2
Chicory, per package	0	4
Chinaware, as earthenware. (See Earthenware.)		
Chocolate, per package	0	2
Cigars, per package	0	6
Clay, fire and other, per ton weight... ..	1	8
Clothing, per case or bale	0	9
Clothes-pins, in boxes, per box	0	1
Clover seed, the bag	0	2
" " the case or cask	0	4
Coals, per ton	0	6
" coked	1	0
Cocanuts, per 100	0	4
Cocoa and cocoa nibs, the bag	0	2
Cocoa prepared, per package	0	2
Coffee, in bags, per ton, gross	1	8
" in casks	2	6
Coir rope or fibre, per ton	1	8
Confectionery, per package	0	3
Copper, loose, per ton	1	8
" sheets, in cases, per cwt., or fractional part thereof	0	1
Copra, per ton weight	1	8
Cordage	1	8
Corks, per package	0	4
Cotton waste, per package	0	9

Wharfage and Tonnage Rates.

	s.	d.
Crab winches	0	6
Currants, per package of 112 lb., and under	0	2
" for each additional cwt., or fractional part thereof	0	1
Cutlery, including axes, hatchets, tomahawks, tools, knives and forks, scythes, swords, and sheepshears. (See Hardware.)		
Curiosities, per package	0	4
Dates	0	2
Doors, each	0	1
Drapery, the bale or case	0	9
Drugs and apothecary ware, per package	0	6
" " " the bag, drum, or keg	0	2
Earthenware, the crate	1	8
" the cask	1	0
" in other packages, per package	0	6
Eau de Cologne, the package	0	6
Essences and essential oils, the package	0	6
Engines, fire, each	3	4
Engines, garden and beer	0	8
Feathers, the package...	0	9
Felt, the bale or case	0	9
Figs, per cwt., or fractional part thereof	0	2
" in iron tanks. (See Iron tanks.)		
Firearms, the chest or case	0	9
Fish in tins—lobsters, salmon, sardines, oysters, herrings, and others, the case...	0	2
Fish, dried—codfish, herrings, ling, &c., the case	0	3
" " the half-barrel, and under	0	2
" " " barrel	0	3
" " " hogshead	0	6
" " " puncheon	1	0
Flax, the ton	1	8
Floorcloth, the package	1	0
Flour in bags, per 2,000 lb.	1	8
" barrels, each...	0	3
Flowers, artificial, per package	0	9
Furs, the package	0	9
Frying-pans, loose or bundle, per dozen	0	2
" in casks, as hardware. (See Hardware.)		
Furniture, per ton of 40 cubic feet	1	8
Fruit, green, per package	0	1
Ginger, per package	0	2
Glass, window, per case	0	2
Glass, plate, per package	1	0
Glassware. (See Earthenware.)		
Glucose, per ton gross	1	8
Glue, per package	0	6
Grain, including barley, beans, corn, dholl, gram, maize, malt, oats, peas, wheat, loose or in bags, per bushel	0	0 $\frac{2}{3}$
" in tanks. (See Iron tanks)		
Grapnels, per cwt.	0	1
Grates (castings), loose, per ton	1	8
" per package	0	6
Grindery, per package	0	9
Grindstones, each	0	1
Gunny bags, per bale or bundle	0	9
Gypsum, loose, per ton weight	1	8
" per package...	0	3

Wharfage and Tonnage Rates.

	s.	d.
Hardware and hollowware, including cutlery, ironmongery, axeheads, axes, hatchets, tomahawks, tools, knives and forks, scythes, swords, sheepshears, lacqueredware, lampware—		
The drum or keg	0	2
" barrel	0	3
" bag, bale, box, or bundle	0	4
" case	0	6
" crate or cask	1	0
Hair, the package	0	6
Haberdashery, per bale or case	0	9
Harp. (<i>See Musical instruments.</i>)		
Hats, the case... ..	1	0
Hams, loose, per dozen	0	2
" in case	0	4
" in cask	0	6
Hay, per ton	1	8
Hemp, the ton weight	1	8
Hides, per 40	1	8
Hops, per cwt., or fractional part thereof	0	3
Hoops, iron, the ton weight	1	8
" wood, per dozen	0	2
Hollowware. As hardware. (<i>See Hardware.</i>)		
Ice, the ton weight	1	8
India-rubber goods, the package	0	9
Iron tanks, empty, of 400 gallons	2	0
" " 200 "	1	0
" when filled with goods, the 400 gallons	3	6
" " 200 "	2	6
Iron, in bars, castings, hoop, rod, hurdles, fencing-wire, pig, pots, pipes, ovens, sheet, railway, per ton	1	8
" galvanised, loose, or in packets, per ton	1	8
Ironmongery. (<i>See Hardware.</i>)		
Jute, per ton	1	8
Kerosene oil, per case	0	2
Liquids—Spirits, wines, cordials, the octave and under	0	2
" quarter-casks	0	3
" hhd.	0	6
" puncheon	0	9
" pipe or butt	1	0
" leager and tun butt	1	8
" in bottle, quarts, 2 dozen and under	0	2
" additional for each dozen	0	1
" pints, 4 dozen and under	0	2
" additional for each dozen	0	$0\frac{1}{2}$
" geneva case... ..	0	2
" ale, beer, cider, perry, vinegar, firkin or kilderkin, 18 gallons and under	0	2
" barrel	0	4
" hhd.	0	6
" butt	1	0
" in bottle, quarts, 2 dozen and under	0	2
" additional for each dozen	0	1
" pints, 6 dozen and under	0	3
" additional for each dozen or fractional part thereof	0	$0\frac{1}{4}$
Lard, per package	0	2
Lampware. As hardware. (<i>See Hardware.</i>)		
Lacqueredware. As hardware. (<i>See Hardware.</i>)		

Wharfage and Tonnage Rates.

	s.	d.
Lead in bulk, roll, pipe, or package, per ton	1	8
Leather, bale, case, or bundle	0	9
Lime, per ton	1	8
Linens, the package	0	9
Lucerne seed, the bag	0	2
" the case or cask	0	4
Machinery, per ton of 20 cwt., or 40 cubic feet	1	8
Marble, in block, the ton	1	8
" manufactured, per package	0	9
Mangles, per package	0	6
Matting, the roll	0	2
Matches, per package	0	2
Millinery, per case or bale	0	9
Millstones, per ton weight	1	8
Molasses, in casks or tanks, per ton gross	1	8
Mother-of-pearl shells, loose, the ton	1	8
" in packages, each	0	4
Musical instruments (not pianos), per package	0	9
Nails, screws, rivets, nuts, bolts, and washers, packages 112 lb. and under	0	1
Additional for each cwt. or fractional part thereof	0	1
Nuts, the bag	0	2
Nutmegs, the package	0	2
Oatmeal, per keg	0	2
" in other package	0	3
Oakum, per ton weight	1	8
Oars, loose or bundle, per dozen	0	4
" in cases, per package	0	6
Oils, fish, seal, or cocoanut, in casks, per 100 gallons	1	0
Oil-cake, per ton	1	8
Oil, castor, per case	0	2
Oilmen's and general stores—		
Anchovies	Dried fruits	Mustard
Arrowroot	Fancy soaps	Pearl barley
Brandied fruits	Groats	Pickles
Bottled fruits	Jams and jellies	Preserves
Black lead	Isinglass	Sauces
Brunswick black	Maccaroni	Salad oil
Capers	Maizena	Vermicelli
Chillies	Milk, Swiss	
Corn-flour	Milk, condensed	
Per case		0 2
In tanks. (See Iron tanks.)		
Oils, linseed and other oils (not fish, seal, or cocoanut)—		
" drum or keg		0 2
" barrel or quarter-cask		0 3
" hogshead		0 6
" puncheon		0 9
" pipe		1 0
" tun butt		1 8
Onions, per cwt.		0 1
Ores, metallic, per ton		0 9
Paddy. As rice. (See Rice.)		
Paints, colours, putty, and dryers, packages of 56 lb. and under		0 1
" packages from 56 lb. to 112 lb. inclusive		0 2
" for each additional cwt. or fractional part		0 1
Paper—Paper bags, paper hangings, sand and glass paper, and mill-boards, per package		0 9

Wharfage and Tonnage Rates.

	s.	d.
Tea, half-chest	0	1 $\frac{1}{2}$
" box	0	0 $\frac{3}{4}$
Timber, deals, deal ends, and all sawn timber, per 600 ft. superficial ...	1	8
" rough timber and spars, per 40 cubic feet	1	8
" laths, trenails, shingles, per 1,000	0	4
" posts and rails, per 100	1	8
" palings, per 600	1	8
" spokes, per 500	1	8
" staves, cooper's, per 100	1	8
Tobacco, manufactured, packages 112 lb. and under	0	2
" " additional for each cwt. or fractional part thereof	0	1
" in leaf, on all packages, per cwt. or fractional part thereof ...	0	2
Tin, per ton	1	8
Tin plates, per box	0	2
Tobacco pipes, clay, in boxes, per box	0	1
Tubs, per nest	0	4
Turnery, cask, case, or package	0	9
Turpentine, per keg, drum, or case	0	2
Twine, sash lines, and halters, per package	0	9
Varnish or polish, per package	0	2
Weigh-bridges. As machinery. (<i>See Machinery.</i>)		
Weighing machines, portable, per package	0	9
Wire netting, loose, per roll	0	2
" in package	0	8
Whaleboats and others	1	0
Whalebone, the ton	1	8
Wheelbarrows, single, each	0	2
" in packages. As Hardware. (<i>See Hardware.</i>)		
Whiting, the package	0	4
Wheels, coach or cart, each	0	2
Wool, the bale	0	8
Woolpacks, per bale of 50 and under	0	8
" " of over 50 and not exceeding 100	1	0
Wool bagging, per bale	1	0
Yams, per ton	1	8
Zinc, per cwt.	0	1
Undefined and unenumerated goods, heavy, to be charged weight per ton of 2,240 lb.	1	8
Undefined and unenumerated goods, light, to be charged per ton of 40 cubic feet	1	8

 OUTWARD WHARFAGE RATES.

Rates not exceeding one-half of the foregoing Inward Wharfage Rates on goods shipped outwards.

When smaller packages subject to a specified rate under this tariff are enclosed or so fastened together as to form a larger package, it shall be lawful to levy the prescribed rate on each package of which the said larger package is composed, goods contained in iron tanks excepted.

When goods chargeable by weight under the foregoing tariff are in such form or so packed that the measurement tonnage exceeds the weight tonnage, it shall be lawful to charge the wharfage rate by measurement.

Wharfage and Tonnage Rates.

THIRD SCHEDULE.

Section 8.

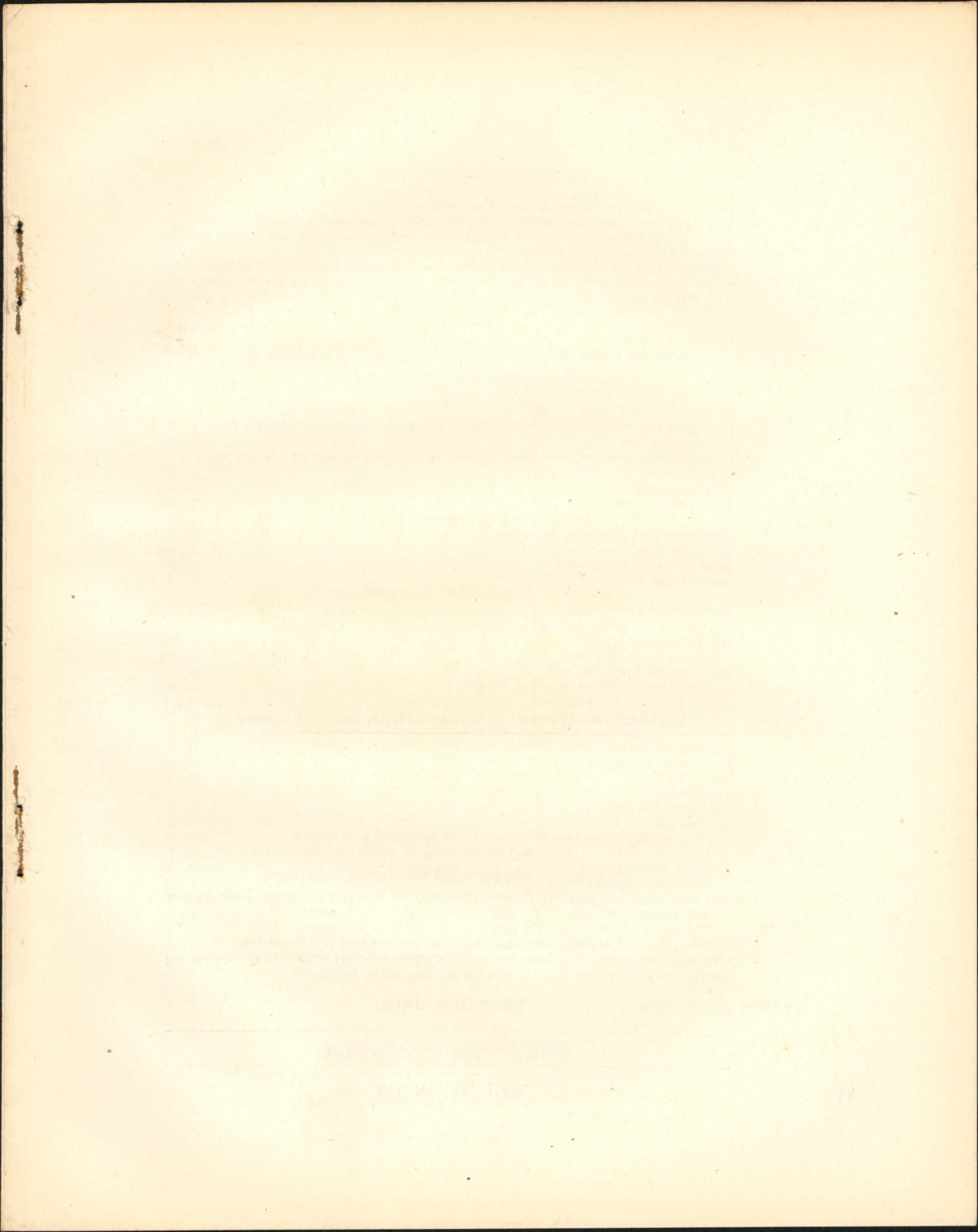
Free lay days.

For vessels not exceeding 100 tons register	Two days.
Exceeding 100 tons and not exceeding 200 tons register	Four "
" 200 " 300 " " "	Six "
" 300 " 400 " " "	Eight "
And for every additional 100 tons or fractional part of 100 tons...	One day.

Excluding Sundays and public holidays in every case.

 By Authority : WILLIAM APPLGATE GULLICK, Government Printer, Sydney, 1902.

[1s.]

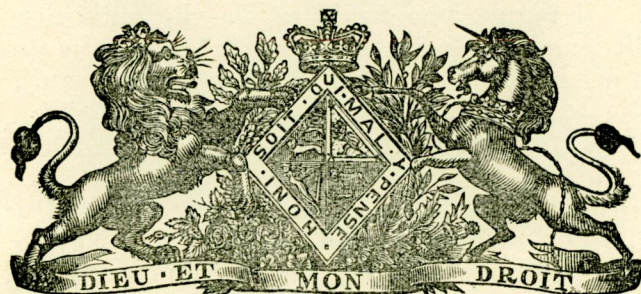


I Certify that this PUBLIC BILL, which originated in the LEGISLATIVE COUNCIL, has finally passed the LEGISLATIVE COUNCIL and the LEGISLATIVE ASSEMBLY of NEW SOUTH WALES.

*Legislative Council Chamber,
Sydney, 5th December, 1901. }*

JOHN J. CALVERT,
Clerk of the Parliaments.

New South Wales.



ANNO PRIMO

EDWARDI VII REGIS.

Act No. 16, 1902.

An Act to consolidate the Acts relating to Wharfage and Tonnage Rates. [Assented to, 24th January, 1902.]

BE it enacted by the King's Most Excellent Majesty, by and with the advice and consent of the Legislative Council and Legislative Assembly of New South Wales in Parliament assembled, and by the authority of the same, as follows:—

PART I.

Repeal and Interpretation.

1. This Act may be cited as the "Wharfage and Tonnage Rates Act, 1901," and is divided into Parts and Divisions, as follows:—

PART I.—*Preliminary*—ss. 1-4.

PART

*Wharfage and Tonnage Rates.*PART II.—*Rates*—DIVISION 1.—*Wharfage rates*—ss. 5-7.DIVISION 2.—*Tonnage rates*—ss. 8-10.DIVISION 3.—*Leases of rates*—ss. 11-13.PART III.—*Goods on Wharfs*—ss. 14, 15.PART IV.—*Miscellaneous matters*—ss. 16-18.Repeal.
First Schedule.

2. (1) The Acts mentioned in the First Schedule to this Act are to the extent therein expressed hereby repealed.

Officers under Acts
hereby repealed.

(2) All persons appointed under the Act hereby repealed and holding office at the time of the passing of this Act shall be deemed to have been appointed hereunder.

Regulations under
Acts hereby repealed.

(3) All regulations made under the authority of the Act hereby repealed and being in force at the time of the passing of this Act shall be deemed to have been made under the authority of this Act.

Interpretation.
44 Vic. No. 8, s. 1.

3. In this Act, unless the context or subject-matter otherwise indicates or requires,—

“public wharf” means the Circular Quay and the Queen’s Wharf at the Port of Sydney, and any wharf in New South Wales appointed a public or legal wharf under any Act regulating the Customs;

“private sufferance wharf” means any wharf for which a sufferance is or has been granted in pursuance of any such Act as aforesaid for the landing of goods subject to the payment of Customs duties;

“wharfinger” means the owner or lessee of a private sufferance wharf, or the agent of either.

Sydney Harbour
Trust Act, 1900.

4. This Act shall be construed subject to the provisions of the Sydney Harbour Trust Act, 1900.

PART II.

RATES.

DIVISION 1.—*Wharfage rates.*Inward wharfage
rates to be levied.
Second Schedule.
Ibid. s. 3.
Act No. 52, 1899, s. 3.

5. Upon the landing on any public wharf or private sufferance wharf of any goods, merchandise, packages, or articles enumerated or mentioned in the Second Schedule hereto, there may be levied rates to be termed “Inward Wharfage Rates,” not exceeding the respective rates contained in the said schedule.

Proviso.

Provided that all goods arriving from any of the Australasian Colonies or New Zealand, landed on any public wharf and entered at the Customs-house for transhipment, shall be exempt from any wharfage rates chargeable under this Act.

Wharfage and Tonnage Rates.

6. In respect of any goods, merchandise, packages, or articles laden, whether into vessels, lighters, or boats, from any public or private sufferance wharf, rates, to be termed "Outward Wharfage Rates," may be levied in accordance with the scale specified in the Second Schedule hereto for outward wharfage rates. Outward wharfage rates. 44 Vic. No. 8, s. 4. Second Schedule.

7. Every vessel under two hundred and forty tons registered tonnage, and every lighter, shall pay, for each day or portion of a day during which she occupies a berth for loading only at any public or private sufferance wharf, a wharfage rate of ten shillings. Wharfage rate for small craft. Ibid. s. 5.

DIVISION 2.—*Tonnage rates.*

8. (1) Rates may be levied upon vessels discharging their inward cargoes at any public wharf or private sufferance wharf as follows:— Tonnage rates. Act No. 52, 1899, s. 1.

(a) upon every such vessel fully laden and discharging the whole of her cargo, a rate of one farthing per ton per diem,

(b) upon every such vessel fully laden discharging a portion only of her cargo, and on every such vessel partly laden discharging the whole or a portion of her cargo, a rate of one half-penny per ton per diem,

for every day or part of a day that such vessel occupies a berth at any such wharf.

(2) (a) Every such vessel fully laden and discharging the whole of her cargo shall be allowed free lay days in accordance with the scale in the Third Schedule hereto, during which lay days she shall be exempt from the payment of tonnage rates. Lay days. Third Schedule.

(b) Every such vessel partly laden or discharging a portion only of her inward cargo shall only be allowed free lay days in accordance with the proportion which the amount of cargo she discharges bears to her gross registered tonnage where the vessel is a steam vessel, and to fifteen-tenths of her net registered tonnage where the vessel is a sailing vessel.

(c) No rate shall be leviable under this section until the free lay days have expired.

9. Any vessel of two hundred and forty tons registered tonnage or upwards, occupying a berth for loading only at any public wharf or private sufferance wharf, shall pay for each day she occupies such berth, rates as follows:— Tonnage rates on vessels loading only. 44 Vic. No. 8, s. 7.

(a) for the first twenty-five days from the date of occupation, a rate not exceeding one half-penny per ton per day;

(b) after the expiration of such twenty-five days, half the above rate.

10. No clearance shall be granted for any vessel liable to the payment of tonnage rates at any public wharf within the meaning of this Act, unless a receipt for the payment of such rates, signed by the proper officer or person, is presented to the Collector or other proper officer of customs. As to clearance of vessels discharging lading, &c., at public wharfs. Ibid. s. 8.

DIVISION

Wharfage and Tonnage Rates.

DIVISION 3.—*Leases of rates.*

Wharfage and
tonnage rates may be
leased.

44 Vic. No. 8, s. 15.

11. The Governor may demise and let to farm by public auction, in such manner and subject to such bonds with or without sureties and to such covenants and conditions as the Treasurer may think fit, the wharfage and tonnage rates payable at any public wharf or at any defined portion of such wharf for any term not exceeding five years.

Lessee may charge
rates according to
scale.

Ibid. s. 16.

12. The lessee under any such lease may levy, demand, and recover the wharfage and tonnage rates prescribed by this Act, subject to all exemptions contained in this Act or in the Schedules hereto.

No such rates shall exceed the scales prescribed by this Act or specified in the Second Schedule.

Lessees of rates may
appoint collectors or
other necessary
servants.

Ibid. s. 17.

13. (1) During such term as the said rates or any part thereof are so leased as aforesaid to any person whomsoever, the lessee thereof may nominate and appoint such other person as he thinks necessary by writing under his hand to collect, demand, and take such rates so demised, leased, and farmed.

Powers of appointed
person.

(2) Any such person so appointed may use all lawful means for the recovery of such rates in case of non-payment or evasion as such lessee himself could do by law, and may appoint such persons as he may think necessary by writing under his hand as wharfingers or other servants.

Liability of lessee.

(3) Every such lessee shall be answerable for the conduct of every person appointed by him as aforesaid, and shall be liable for every such person's neglect, misconduct, or breach of any law or regulation respecting such rates as fully to all intents and purposes as if such lessee had personally been guilty of the same.

 PART III.

GOODS ON WHARFS.

Consignees and
others may take
delivery of goods at
private wharfs.

Ibid. s. 9.

14. (1) The master of any vessel which occupies a berth at any public wharf or private sufferance wharf for the purpose of discharging inward cargo may deliver to the consignee, importer, or his agent, any goods so to be discharged without molestation or interference by the collector or wharfinger, or by any person whomsoever, and without any charge other than the respective rates authorised by this Act.

Access to wharfs.

(2) All importers and consignees, their agents and servants, shall, during custom-house hours for the discharge of such vessel, have free access to and from the ship's side whilst so discharging for the purpose of taking delivery of any such goods.

Wharfage and Tonnage Rates.

15. If any goods are landed on any public wharf or private sufferance wharf, and are not removed therefrom before the expiration of forty-eight hours thereafter, the collector, if the wharf is a public wharf, or the wharfinger, if the wharf is a private sufferance wharf, may remove and store the said goods in the King's or any bonded or free warehouse at the risk and cost of the consignee or importer thereof, subject to any lien by the owner, master, or agent of the vessel for freight or charges which may be payable on such goods.

Removal of goods
from wharves.
44 Vic. No. 8, s. 10.

PART IV.

MISCELLANEOUS MATTERS.

16. (1) For the purposes of this Act the registered tonnage of any vessel shall be determined in accordance with the provisions of the Imperial Act the Merchant Shipping Act, 1894, and the Schedules thereto and any enactments amending the same; but for ascertaining the tonnage rates leviable under this Act upon steam vessels, the gross tonnage measurement shall be deemed to be the tonnage of such vessels.

Registered tonnage,
how calculated.
Act No. 52, 1899, s. 2.

(2) The latest publication of Lloyd's Register shall be evidence of the net and gross tonnage of all vessels mentioned therein.

Evidence of tonnage.

17. Notwithstanding anything in this Act contained, the Governor may abolish altogether or reduce the scale of wharfage or tonnage rates prescribed by this Act and leviable thereunder at any public wharf, whenever in his opinion it is to the public interest so to do.

Governor may
abolish or reduce
rates at public
wharfs.
44 Vic. No. 8, s. 12.

18. Subject to the provisions of this Act, the Governor may frame regulations for the following purposes:—

Power to make
regulations.
Ibid. s. 14.

- (a) the berthing of vessels at a public wharf;
- (b) the removal of vessels from a public wharf;
- (c) the discharging of cargo and loading thereof on or from any public wharf;
- (d) the storage or removal of goods, merchandise, packages, and articles discharged on or laden from any public wharf;
- (e) the leasing of any public wharf; and
- (f) for prescribing penalties, not exceeding in any case the sum of twenty pounds, for the contravention of any such regulation, and for directing the mode of their recovery and enforcement. Every such penalty may be defined by a minimum as well as a maximum limit.

All such regulations shall, upon notification in the Gazette, have the force of law; and shall be laid before Parliament within fourteen days after such notification if Parliament is then in session, and if not then within fourteen days after the commencement of the next ensuing session.

 SCHEDULES.

Wharfage and Tonnage Rates.

	s.	d.
Books, per package	0	4
Boots and shoes, per trunk or box	0	3
Bottles, empty, per package	0	4
Bran, per bushel	0	0 $\frac{1}{2}$
Bricks, tiles, and slates, per 500	1	6
" Fire-bricks, per 400	1	6
" Fire-lumps, slabs, and tiles, per ton weight...	1	8
Brimstone, loose, per ton	1	8
" in packages as drugs. (See Drugs.)		
Bristles, per cask or case	0	6
Brooms, per doz., loose or in bundles	0	2
Brushware, per bale or case	0	9
Buckets and pails, per dozen... ..	0	4
Butter, per cwt.	0	1
Cables, coir, hemp, Manilla, iron rope, per ton weight	1	8
Candles, per box of 28 lb. and under	0	1
Canes or rattans, per 100 bundles	1	8
" " loose, per 100	0	1
Cannon, per ton weight	1	8
Canvas, the bale or case	0	9
Carpets, the bale or case	1	0
Carraway seeds, the package... ..	0	4
Carrots, the cwt.	0	1
Carriages and carts, 4-wheeled, each	5	0
" " 2-wheeled	2	6
Casks, empty, each	0	2
Castor oil, per package	0	2
Cement, the barrel	0	4
Chairs, packed in pieces, per package	0	4
Chalk, loose, per ton	1	8
" in casks, per package	0	4
Cheese, per cwt., loose or in cask	0	1
" in case, per package	0	2
Chicory, per package	0	4
Chinaware, as earthenware. (See Earthenware.)		
Chocolate, per package	0	2
Cigars, per package	0	6
Clay, fire and other, per ton weight... ..	1	8
Clothing, per case or bale	0	9
Clothes-pins, in boxes, per box	0	1
Clover seed, the bag	0	2
" " the case or cask	0	4
Coals, per ton	0	6
" coked	1	0
Cocoanuts, per 100	0	4
Cocoa and cocoa nibs, the bag	0	2
Cocoa prepared, per package	0	2
Coffee, in bags, per ton, gross	1	8
" in casks	2	6
Coir rope or fibre, per ton	1	8
Confectionery, per package	0	3
Copper, loose, per ton	1	8
" sheets, in cases, per cwt., or fractional part thereof	0	1
Copra, per ton weight	1	8
Cordage	1	8
Corks, per package	0	4
Cotton waste, per package	0	9

Wharfage and Tonnage Rates.

	s.	d.
Crab winches	0	6
Currants, per package of 112 lb., and under	0	2
" for each additional cwt., or fractional part thereof	0	1
Cutlery, including axes, hatches, tomahawks, tools, knives and forks, scythes, swords, and sheepshears. (See Hardware.)		
Curiosities, per package	0	4
Dates	0	2
Doors, each	0	1
Drapery, the bale or case	0	9
Drugs and apothecary ware, per package	0	6
" " " the bag, drum, or keg	0	2
Earthenware, the crate	1	8
" the cask	1	0
" in other packages, per package	0	6
Eau de Cologne, the package	0	6
Essences and essential oils, the package	0	6
Engines, fire, each	3	4
Engines, garden and beer	0	8
Feathers, the package... ..	0	9
Felt, the bale or case	0	9
Figs, per cwt., or fractional part thereof	0	2
" in iron tanks. (See Iron tanks.)		
Firearms, the chest or case	0	9
Fish in tins—lobsters, salmon, sardines, oysters, herrings, and others, the case... ..	0	2
Fish, dried—codfish, herrings, ling, &c., the case	0	3
" " the half-barrel, and under	0	2
" " " barrel	0	3
" " " hogshead	0	6
" " " puncheon	1	0
Flax, the ton	1	8
Floorcloth, the package	1	0
Flour in bags, per 2,000 lb.	1	8
" barrels, each... ..	0	3
Flowers, artificial, per package	0	9
Furs, the package	0	9
Frying-pans, loose or bundle, per dozen	0	2
" in casks, as hardware. (See Hardware.)		
Furniture, per ton of 40 cubic feet	1	8
Fruit, green, per package	0	1
Ginger, per package	0	2
Glass, window, per case	0	2
Glass, plate, per package	1	0
Glassware. (See Earthenware.)		
Glucose, per ton gross	1	8
Glue, per package	0	6
Grain, including barley, beans, corn, droll, gram, maize, malt, oats, peas, wheat, loose or in bags, per bushel	0	0 $\frac{2}{3}$
" in tanks. (See Iron tanks.)		
Grapnels, per cwt.	0	1
Grates (castings), loose, per ton	1	8
" per package	0	6
Grindery, per package	0	9
Grindstones, each	0	1
Gunny bags, per bale or bundle	0	9
Gypsum, loose, per ton weight	1	8
" per package... ..	0	3

Wharfage and Tonnage Rates.

	s.	d.
Hardware and hollowware, including cutlery, ironmongery, axeheads, axes, hatchets, tomahawks, tools, knives and forks, scythes, swords, sheepshears, lacqueredware, lampware—		
The drum or keg	0	2
„ barrel	0	3
„ bag, bale, box, or bundle	0	4
„ case	0	6
„ crate or cask	1	0
Hair, the package	0	6
Haberdashery, per bale or case	0	9
Harps. (<i>See Musical instruments.</i>)		
Hats, the case... ..	1	0
Hams, loose, per dozen	0	2
„ in case	0	4
„ in cask	0	6
Hay, per ton	1	8
Hemp, the ton weight	1	8
Hides, per 40	1	8
Hops, per cwt., or fractional part thereof	0	3
Hoops, iron, the ton weight	1	8
„ wood, per dozen	0	2
Hollowware. As hardware. (<i>See Hardware.</i>)		
Ice, the ton weight	1	8
India-rubber goods, the package	0	9
Iron tanks, empty, of 400 gallons	2	0
„ „ 200 „	1	0
„ when filled with goods, the 400 gallons	3	6
„ „ 200 „	2	6
Iron, in bars, castings, hoop, rod, hurdles, fencing-wire, pig, pots, pipes, ovens, sheet, railway, per ton	1	8
„ galvanised, loose, or in packets, per ton	1	8
Ironmongery. (<i>See Hardware.</i>)		
Jute, per ton	1	8
Kerosene oil, per case	0	2
Liquids—Spirits, wines, cordials, the octave and under	0	2
„ quarter-casks	0	3
„ hhd.	0	6
„ puncheon	0	9
„ pipe or butt	1	0
„ leager and tun butt	1	8
„ in bottle, quarts, 2 dozen and under	0	2
„ additional for each dozen	0	1
„ pints, 4 dozen and under	0	2
„ additional for each dozen	0	0 $\frac{1}{2}$
„ geneva case... ..	0	2
„ ale, beer, cider, perry, vinegar, firkin or kilderkin, 18 gallons and under	0	2
„ barrel	0	4
„ hhd.	0	6
„ butt	1	0
„ in bottle, quarts, 2 dozen and under	0	2
„ additional for each dozen	0	1
„ pints, 6 dozen and under	0	3
„ additional for each dozen or fractional part thereof	0	0 $\frac{1}{2}$
Lard, per package	0	2
Lampware. As hardware. (<i>See Hardware.</i>)		
Lacqueredware. As hardware. (<i>See Hardware.</i>)		

Wharfage and Tonnage Rates.

	s.	d.
Lead in bulk, roll, pipe, or package, per ton	1	8
Leather, bale, case, or bundle	0	9
Lime, per ton	1	8
Linens, the package	0	9
Lucerne seed, the bag	0	2
" the case or cask	0	4
Machinery, per ton of 20 cwt., or 40 cubic feet	1	8
Marble, in block, the ton	1	8
" manufactured, per package	0	9
Mangles, per package	0	6
Matting, the roll	0	2
Matches, per package...	0	2
Millinery, per case or bale	0	9
Millstones, per ton weight	1	8
Molasses, in casks or tanks, per ton gross	1	8
Mother-of-pearl shells, loose, the ton	1	8
" in packages, each	0	4
Musical instruments (not pianos), per package	0	9
Nails, screws, rivets, nuts, bolts, and washers, packages 112 lb. and under	0	1
Additional for each cwt. or fractional part thereof	0	1
Nuts, the bag	0	2
Nutmegs, the package	0	2
Oatmeal, per keg	0	2
" in other package	0	3
Oakum, per ton weight	1	8
Oars, loose or bundle, per dozen	0	4
" in cases, per package	0	6
Oils, fish, seal, or cocoanut, in casks, per 100 gallons	1	0
Oil-cake, per ton	1	8
Oil, castor, per case	0	2
Oilmen's and general stores—		
Anchovies	Dried fruits	Mustard
Arrowroot	Fancy soaps	Pearl barley
Brandied fruits	Groats	Pickles
Bottled fruits	Jams and jellies	Preserves
Black lead	Isinglass	Sauces
Brunswick black	Maccaroni	Salad oil
Capers	Maizena	Vermicelli
Chillies	Milk, Swiss	
Corn-flour	Milk, condensed	
Per case		0 2
In tanks. (See Iron tanks.)		
Oils, linseed and other oils (not fish, seal, or cocoanut)—		
" drum or keg		0 2
" barrel or quarter-cask		0 3
" hogshead...		0 6
" puncheon		0 9
" pipe		1 0
" tun butt		1 8
Onions, per cwt.		0 1
Ores, metallic, per ton		0 9
Paddy. As rice. (See Rice.)		
Paints, colours, putty, and dryers, packages of 56 lb. and under...		0 1
" packages from 56 lb. to 112 lb. inclusive...		0 2
" for each additional cwt. or fractional part		0 1
Paper—Paper bags, paper hangings, sand and glass paper, and mill-boards, per package		0 9

Wharfage and Tonnage Rates.

	s.	d.
Tea, half-chest	0	1½
" box	0	0¾
Timber, deals, deal ends, and all sawn timber, per 600 ft. superficial ...	1	8
" rough timber and spars, per 40 cubic feet	1	8
" laths, trenails, shingles, per 1,000	0	4
" posts and rails, per 100	1	8
" palings, per 600	1	8
" spokes, per 500	1	8
" staves, cooper's, per 100	1	8
Tobacco, manufactured, packages 112 lb. and under	0	2
" additional for each cwt. or fractional part thereof ...	0	1
" in leaf, on all packages, per cwt. or fractional part thereof ...	0	2
Tin, per ton	1	8
Tin plates, per box	0	2
Tobacco pipes, clay, in boxes, per box	0	1
Tubs, per nest... ..	0	4
Turnery, cask, case, or package	0	9
Turpentine, per keg, drum, or case	0	2
Twine, sash lines, and halters, per package... ..	0	9
Varnish or polish, per package	0	2
Weigh-bridges. As machinery. (See Machinery.)		
Weighing machines, portable, per package... ..	0	9
Wire netting, loose, per roll... ..	0	2
" in package	0	8
Whaleboats and others	1	0
Whalebone, the ton	1	8
Wheelbarrows, single, each	0	2
" in packages. As Hardware. (See Hardware.)		
Whiting, the package... ..	0	4
Wheels, coach or cart, each	0	2
Wool, the bale	0	8
Woolpacks, per bale of 50 and under	0	8
" of over 50 and not exceeding 100	1	0
Wool bagging, per bale	1	0
Yams, per ton... ..	1	8
Zinc, per cwt.	0	1
Undefined and unenumerated goods, heavy, to be charged weight per ton of 2,240 lb.	1	8
Undefined and unenumerated goods, light, to be charged per ton of 40 cubic feet	1	8

OUTWARD WHARFAGE RATES.

Rates not exceeding one-half of the foregoing Inward Wharfage Rates on goods shipped outwards.

When smaller packages subject to a specified rate under this tariff are enclosed or so fastened together as to form a larger package, it shall be lawful to levy the prescribed rate on each package of which the said larger package is composed, goods contained in iron tanks excepted.

When goods chargeable by weight under the foregoing tariff are in such form or so packed that the measurement tonnage exceeds the weight tonnage, it shall be lawful to charge the wharfage rate by measurement.

Wharfage and Tonnage Rates.

THIRD SCHEDULE.

Section 8.

Free lay days.

For vessels not exceeding 100 tons register Two days.
Exceeding 100 tons and not exceeding 200 tons register Four "
" 200 " 300 " " " Six "
" 300 " 400 " " " Eight "
And for every additional 100 tons or fractional part of 100 tons... One day.

Excluding Sundays and public holidays in every case.

In the name and on the behalf of His Majesty I assent to this Act.

WM. OWEN,

By Deputation from His Excellency the Lieutenant-Governor.

State Government House,

Sydney, 24th January, 1902.

Faint, illegible text, possibly bleed-through from the reverse side of the page.

Faint, illegible text, possibly bleed-through from the reverse side of the page.

Faint, illegible text, possibly bleed-through from the reverse side of the page.

Faint, illegible text, possibly bleed-through from the reverse side of the page.

Memo. and Certificate to accompany the Wharfage and Tonnage Rates Bill.

THIS Bill deals with the Act 44 Vic. No. 8, and the Act No. 52, 1899. The Act 46 Vic. No. 8, though purporting to amend the Wharfage and Tonnage Rates Act, really amends the Navigation Act, and therefore has been dealt with in that consolidation.

Clause 3. In the definition of "Public Wharf" the words "in force for the time being" have been omitted as unnecessary.

Clause 5. The words referring to the "tariff and scale of charges" have been omitted as unnecessary.

Clause 12. It appears very doubtful, to say the least of it, whether sec. 16 of the original Act gives the lessee of a public wharf any power to levy the loading charges mentioned in secs. 5 and 7. If it does not the omission must have been an oversight. On inquiry at the Treasury it has been found that in fact lessees do levy these charges. The clause has therefore been drawn to follow the practice.

Save as aforesaid, I certify that this Bill solely consolidates and in no way alters, adds to, or amends the law as contained in the enactments therein consolidated.

CHAS. G. HEYDON,
Commissioner for the Consolidation of the Statute Law.

Wharfage and Tonnage Rates Bill.

TABLE showing how the sections of Acts consolidated have been dealt with.

Section of Repealed Acts.	Section of Consolidated Act.	Remarks.
44 VICTORIA No. 8.		
1	3	
2	Repeals.
3	5	
4	6	
5	7	
6	Repealed by Act No. 52, 1899, sec. 3.
7	9	
8	10	
9	14	
10	15	
11	Repealed by Act No. 52, 1899, sec. 3.
12	17	
13	Operation exhausted.
14	18	
15	11	
16	12	
17	13	
18	Superseded by 46 Vic. No. 8, sec. 2, which will be consolidated in the Navigation Bill.
ACT No. 52, 1899.		
1	8	
2	16	
3	5	
4	Short title and incorporation.

Whitney and Tanager Bank Bill

To wit: The bill of the Whitney and Tanager Bank, in the State of New York.

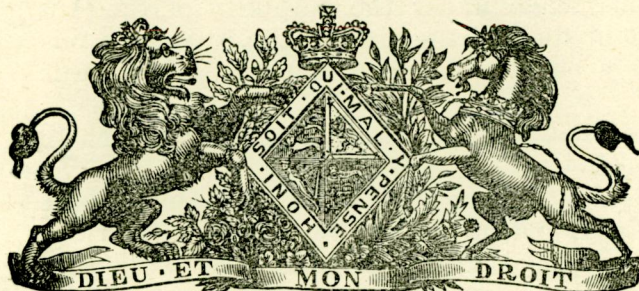
	No.	Date
Cash on hand	1	1840
Cash in bank	2	1840
Cash in hand	3	1840
Cash in bank	4	1840
Cash in hand	5	1840
Cash in bank	6	1840
Cash in hand	7	1840
Cash in bank	8	1840
Cash in hand	9	1840
Cash in bank	10	1840
Cash in hand	11	1840
Cash in bank	12	1840
Cash in hand	13	1840
Cash in bank	14	1840
Cash in hand	15	1840
Cash in bank	16	1840
Cash in hand	17	1840
Cash in bank	18	1840
Cash in hand	19	1840
Cash in bank	20	1840
Cash in hand	21	1840
Cash in bank	22	1840
Cash in hand	23	1840
Cash in bank	24	1840
Cash in hand	25	1840
Cash in bank	26	1840
Cash in hand	27	1840
Cash in bank	28	1840
Cash in hand	29	1840
Cash in bank	30	1840
Cash in hand	31	1840
Cash in bank	32	1840
Cash in hand	33	1840
Cash in bank	34	1840
Cash in hand	35	1840
Cash in bank	36	1840
Cash in hand	37	1840
Cash in bank	38	1840
Cash in hand	39	1840
Cash in bank	40	1840

This PUBLIC BILL originated in the LEGISLATIVE COUNCIL, and, having this day passed, is now ready for presentation to the LEGISLATIVE ASSEMBLY for its concurrence.

*Legislative Council Chamber,
Sydney, 27th November, 1901.* }

JOHN J. CALVERT,
Clerk of the Parliaments.

New South Wales.



ANNO PRIMO

EDWARDI VII REGIS.

Act No. , 1901.

An Act to consolidate the Acts relating to Wharfage and Tonnage Rates.

BE it enacted by the King's Most Excellent Majesty, by and with the advice and consent of the Legislative Council and Legislative Assembly of New South Wales in Parliament assembled, and by the authority of the same, as follows:—

PART I.

Repeal and Interpretation.

1. This Act may be cited as the "Wharfage and Tonnage Rates Act, 1901," and is divided into Parts and Divisions, as follows:—

PART I.—*Preliminary*—ss. 1-4.

*Wharfage and Tonnage Rates.*PART II.—*Rates*—DIVISION 1.—*Wharfage rates*—ss. 5–7.DIVISION 2.—*Tonnage rates*—ss. 8–10.DIVISION 3.—*Leases of rates*—ss. 11–13.PART III.—*Goods on Wharfs*—ss. 14, 15.PART IV.—*Miscellaneous matters*—ss. 16–18.

2. (1) The Acts mentioned in the First Schedule to this Act are to the extent therein expressed hereby repealed.

Repeal.
First Schedule.

(2) All persons appointed under the Act hereby repealed and holding office at the time of the passing of this Act shall be deemed to have been appointed hereunder.

Officers under Acts
hereby repealed.

(3) All regulations made under the authority of the Act hereby repealed and being in force at the time of the passing of this Act shall be deemed to have been made under the authority of this Act.

Regulations under
Acts hereby repealed.

3. In this Act, unless the context or subject-matter otherwise indicates or requires,—

Interpretation.

44 Vic. No. 8, s. 1.

“public wharf” means the Circular Quay and the Queen’s Wharf at the Port of Sydney, and any wharf in New South Wales appointed a public or legal wharf under any Act regulating the Customs;

“private sufferance wharf” means any wharf for which a sufferance is or has been granted in pursuance of any such Act as aforesaid for the landing of goods subject to the payment of Customs duties;

“wharfinger” means the owner or lessee of a private sufferance wharf, or the agent of either.

4. This Act shall be construed subject to the provisions of the Sydney Harbour Trust Act, 1900.

Sydney Harbour
Trust Act, 1900.

PART II.

RATES.

DIVISION 1.—*Wharfage rates.*

5. Upon the landing on any public wharf or private sufferance wharf of any goods, merchandise, packages, or articles enumerated or mentioned in the Second Schedule hereto, there may be levied rates to be termed “Inward Wharfage Rates,” not exceeding the respective rates contained in the said schedule.

Inward wharfage
rates to be levied.

Second Schedule.

Ibid. s. 3.

Act No. 52, 1899, s. 3.

Provided that all goods arriving from any of the Australasian Colonies or New Zealand, landed on any public wharf and entered at the Customs-house for transhipment, shall be exempt from any wharfage rates chargeable under this Act.

Proviso.

6.

Wharfage and Tonnage Rates.

6. In respect of any goods, merchandise, packages, or articles laden, whether into vessels, lighters, or boats, from any public or private sufferance wharf, rates, to be termed "Outward Wharfage Rates," may be levied in accordance with the scale specified in the Second Schedule hereto for outward wharfage rates.

Outward wharfage rates.

44 Vic. No. 8, s. 4.

Second Schedule.

7. Every vessel under two hundred and forty tons registered tonnage, and every lighter, shall pay, for each day or portion of a day during which she occupies a berth for loading only at any public or private sufferance wharf, a wharfage rate of ten shillings.

Wharfage rate for small craft.

Ibid. s. 5.DIVISION 2.—*Tonnage rates.*

8. (1) Rates may be levied upon vessels discharging their inward cargoes at any public wharf or private sufferance wharf as follows :—

Tonnage rates.

Act No. 52, 1899, s. 1.

(a) upon every such vessel fully laden and discharging the whole of her cargo, a rate of one farthing per ton per diem,

(b) upon every such vessel fully laden discharging a portion only of her cargo, and on every such vessel partly laden discharging the whole or a portion of her cargo, a rate of one half-penny per ton per diem,

for every day or part of a day that such vessel occupies a berth at any such wharf.

(2) (a) Every such vessel fully laden and discharging the whole of her cargo shall be allowed free lay days in accordance with the scale in the Third Schedule hereto, during which lay days she shall be exempt from the payment of tonnage rates.

Lay days.

Third Schedule.

(b) Every such vessel partly laden or discharging a portion only of her inward cargo shall only be allowed free lay days in accordance with the proportion which the amount of cargo she discharges bears to her gross registered tonnage where the vessel is a steam vessel, and to fifteen-tenths of her net registered tonnage where the vessel is a sailing vessel.

(c) No rate shall be leviable under this section until the free lay days have expired.

9. Any vessel of two hundred and forty tons registered tonnage or upwards, occupying a berth for loading only at any public wharf or private sufferance wharf, shall pay for each day she occupies such berth, rates as follows :—

Tonnage rates

on vessels loading only.

44 Vic. No. 8, s. 7.

(a) for the first twenty-five days from the date of occupation, a rate not exceeding one half-penny per ton per day ;

(b) after the expiration of such twenty-five days, half the above rate.

10. No clearance shall be granted for any vessel liable to the payment of tonnage rates at any public wharf within the meaning of this Act, unless a receipt for the payment of such rates, signed by the proper officer or person, is presented to the Collector or other proper officer of customs.

As to clearance of vessels discharging lading, &c., at public wharfs.

Ibid. s. 8.

DIVISION

*Wharfage and Tonnage Rates.*DIVISION 3.—*Leases of rates.*

11. The Governor may demise and let to farm by public auction, in such manner and subject to such bonds with or without sureties and to such covenants and conditions as the Treasurer may think fit, the wharfage and tonnage rates payable at any public wharf or at any defined portion of such wharf for any term not exceeding five years.

Wharfage and tonnage rates may be leased.
44Vic. No. 8, s. 15.

12. The lessee under any such lease may levy, demand, and recover the wharfage and tonnage rates prescribed by this Act, subject to all exemptions contained in this Act or in the Schedules hereto.

Lessee may charge rates according to scale.
Ibid. s. 16.

No such rates shall exceed the scales prescribed by this Act or specified in the Second Schedule.

13. (1) During such term as the said rates or any part thereof are so leased as aforesaid to any person whomsoever, the lessee thereof may nominate and appoint such other person as he thinks necessary by writing under his hand to collect, demand, and take such rates so demised, leased, and farmed.

Lessees of rates may appoint collectors or other necessary servants.
Ibid. s. 17.

(2) Any such person so appointed may use all lawful means for the recovery of such rates in case of non-payment or evasion as such lessee himself could do by law, and may appoint such persons as he may think necessary by writing under his hand as wharfingers or other servants.

Powers of appointed person.

(3) Every such lessee shall be answerable for the conduct of every person appointed by him as aforesaid, and shall be liable for every such person's neglect, misconduct, or breach of any law or regulation respecting such rates as fully to all intents and purposes as if such lessee had personally been guilty of the same.

Liability of lessee.

PART III.

GOODS ON WHARFS.

14. (1) The master of any vessel which occupies a berth at any public wharf or private sufferance wharf for the purpose of discharging inward cargo may deliver to the consignee, importer, or his agent, any goods so to be discharged without molestation or interference by the collector or wharfinger, or by any person whomsoever, and without any charge other than the respective rates authorised by this Act.

Consignees and others may take delivery of goods at private wharfs.
Ibid. s. 9.

(2) All importers and consignees, their agents and servants, shall, during custom-house hours for the discharge of such vessel, have free access to and from the ship's side whilst so discharging for the purpose of taking delivery of any such goods.

Access to wharfs.

Wharfage and Tonnage Rates.

15. If any goods are landed on any public wharf or private sufferance wharf, and are not removed therefrom before the expiration of forty-eight hours thereafter, the collector, if the wharf is a public wharf, or the wharfinger, if the wharf is a private sufferance wharf, may remove and store the said goods in the King's or any bonded or free warehouse at the risk and cost of the consignee or importer thereof, subject to any lien by the owner, master, or agent of the vessel for freight or charges which may be payable on such goods.

Removal of goods from wharves.
44 Vic. No. 8, s. 10.

PART IV.

MISCELLANEOUS MATTERS.

16. (1) For the purposes of this Act the registered tonnage of any vessel shall be determined in accordance with the provisions of the Imperial Act the Merchant Shipping Act, 1894, and the Schedules thereto and any enactments amending the same; but for ascertaining the tonnage rates leviable under this Act upon steam vessels, the gross tonnage measurement shall be deemed to be the tonnage of such vessels.

Registered tonnage, how calculated.
Act No. 52, 1899, s. 2.

(2) The latest publication of Lloyd's Register shall be evidence of the net and gross tonnage of all vessels mentioned therein.

Evidence of tonnage.

17. Notwithstanding anything in this Act contained, the Governor may abolish altogether or reduce the scale of wharfage or tonnage rates prescribed by this Act and leviable thereunder at any public wharf, whenever in his opinion it is to the public interest so to do.

Governor may abolish or reduce rates at public wharfs.
44 Vic. No. 8, s. 12.

18. Subject to the provisions of this Act, the Governor may frame regulations for the following purposes:—

Power to make regulations.
Ibid. s. 14.

- (a) the berthing of vessels at a public wharf;
- (b) the removal of vessels from a public wharf;
- (c) the discharging of cargo and loading thereof on or from any public wharf;
- (d) the storage or removal of goods, merchandise, packages, and articles discharged on or laden from any public wharf;
- (e) the leasing of any public wharf; and
- (f) for prescribing penalties, not exceeding in any case the sum of twenty pounds, for the contravention of any such regulation, and for directing the mode of their recovery and enforcement. Every such penalty may be defined by a minimum as well as a maximum limit.

All such regulations shall, upon notification in the Gazette, have the force of law; and shall be laid before Parliament within fourteen days after such notification if Parliament is then in session, and if not then within fourteen days after the commencement of the next ensuing session.

SCHEDULES.

Wharfage and Tonnage Rates.

SCHEDULES.

FIRST SCHEDULE.

Section 2.

Reference to Act.	Title or short title.	Extent of repeal.
44 Vic. No. 8 ...	"Wharfage and Tonnage Rates Act of 1880"	The whole.
Act No. 52, 1899 .	"Tonnage Rates (Amendment) Act, 1899"	The whole.

SECOND SCHEDULE.

Sections 5, 6.

INWARD WHARFAGE RATES.

TARIFF.		s.	d.
Acids, the carboy or case	0	6
Agricultural machinery and implements—			
Drilling and sowing ...	} per ton of 40 cubic feet...	1	8
Haymaking ...			
Reaping and binding ...			
Threshing ...			
Winnowing ...			
Horse-power ...	} loose, each	0	4
Ploughs ...			
Harrows ...			
Cornshellers ...			
Alkali, loose, per ton	1	8
" in packages as drugs. (See Drugs.)	...	1	8
Alum, loose, per ton	1	8
" in packages as drugs. (See Drugs.)	...	0	2
Almonds, in bags, each	0	3
" in cask or case	1	8
Anchors, per ton weight	1	8
Animals—horses, including ponies and cobs, horned cattle, asses and mules, each.	1	8
" calves, sheep, goats, or pigs, each	0	3
Anvils, per cwt.	0	1
Apparel, wearing, per bale or case	0	9
Axle-trees, iron, per ton	1	8
Ale or beer. (See Liquids).			
Bacon, bundle or loose, per cwt.	0	1
" in case	0	4
Bags, the bale or package	0	9
Ballast, per ton	0	6
Bark, loose or in bags, the ton	1	8
Baskets, per package	0	6
" empty, each	0	1
Bellows, smiths', the pair	0	4
Billiard tables, each	3	6
Biscuits, the bag	0	2
" cask or case	0	4
Blacking, liquid, per package	0	4
" cake or paste, per package...	0	2
Blankets, bale or case	0	9
Blue, per box of 56lb. and under	0	2
" for each additional 56 lb. or fractional part thereof...	0	1

Wharfage and Tonnage Rates.

	s.	d.
Books, per package	0	4
Boots and shoes, per trunk or box	0	3
Bottles, empty, per package	0	4
Bran, per bushel	0	0 $\frac{1}{2}$
Bricks, tiles, and slates, per 500	1	6
" Fire-bricks, per 400	1	6
" Fire-lumps, slabs, and tiles, per ton weight... ..	1	8
Brimstone, loose, per ton	1	8
" in packages as drugs. (See Drugs.)		
Bristles, per cask or case	0	6
Brooms, per doz., loose or in bundles	0	2
Brushware, per bale or case	0	9
Buckets and pails, per dozen... ..	0	4
Butter, per cwt.	0	1
Cables, coir, hemp, Manilla, iron rope, per ton weight	1	8
Candles, per box of 28 lb. and under	0	1
Canes or rattans, per 100 bundles	1	8
" " loose, per 100	0	1
Cannon, per ton weight	1	8
Canvas, the bale or case	0	9
Carpets, the bale or case	1	0
Carraway seeds, the package... ..	0	4
Carrots, the cwt.	0	1
Carriages and carts, 4-wheeled, each	5	0
" " 2-wheeled "	2	6
Casks, empty, each	0	2
Castor oil, per package	0	2
Cement, the barrel	0	4
Chairs, packed in pieces, per package	0	4
Chalk, loose, per ton	1	8
" in casks, per package	0	4
Cheese, per cwt., loose or in cask	0	1
" in case, per package	0	2
Chicory, per package	0	4
Chinaware, as earthenware. (See Earthenware.)		
Chocolate, per package	0	2
Cigars, per package	0	6
Clay, fire and other, per ton weight... ..	1	8
Clothing, per case or bale	0	9
Clothes-pins, in boxes, per box	0	1
Clover seed, the bag	0	2
" " the case or cask	0	4
Coals, per ton	0	6
" coked	1	0
Cocoanuts, per 100	0	4
Cocoa and cocoa nibs, the bag	0	2
Cocoa prepared, per package	0	2
Coffee, in bags, per ton, gross	1	8
" in casks	2	6
Coir rope or fibre, per ton	1	8
Confectionery, per package	0	3
Copper, loose, per ton	1	8
" sheets, in cases, per cwt., or fractional part thereof	0	1
Copra, per ton weight	1	8
Cordage	1	8
Corks, per package	0	4
Cotton waste, per package	0	9

Wharfage and Tonnage Rates.

	s.	d.
Crab winches	0	6
Currants, per package of 112 lb., and under	0	2
" for each additional cwt., or fractional part thereof	0	1
Cutlery, including axes, hatches, tomahawks, tools, knives and forks, scythes, swords, and sheepshears. (See Hardware.)		
Curiosities, per package	0	4
Dates	0	2
Doors, each	0	1
Drapery, the bale or case	0	9
Drugs and apothecary ware, per package	0	6
" " the bag, drum, or keg	0	2
Earthenware, the crate	1	8
" the cask	1	0
" in other packages, per package	0	6
Eau de Cologne, the package	0	6
Essences and essential oils, the package	0	6
Engines, fire, each	3	4
Engines, garden and beer	0	8
Feathers, the package... ..	0	9
Felt, the bale or case	0	9
Figs, per cwt., or fractional part thereof	0	2
" in iron tanks. (See Iron tanks.)		
Firearms, the chest or case	0	9
Fish in tins—lobsters, salmon, sardines, oysters, herrings, and others, the case... ..	0	2
Fish, dried—codfish, herrings, ling, &c., the case	0	3
" " the half-barrel, and under	0	2
" " " barrel	0	3
" " " hogshead	0	6
" " " puncheon	1	0
Flax, the ton	1	8
Floorcloth, the package	1	0
Flour in bags, per 2,000 lb.	1	8
" barrels, each... ..	0	3
Flowers, artificial, per package	0	9
Furs, the package	0	9
Frying-pans, loose or bundle, per dozen	0	2
" in casks, as hardware. (See Hardware.)		
Furniture, per ton of 40 cubic feet	1	8
Fruit, green, per package	0	1
Ginger, per package	0	2
Glass, window, per case	0	2
Glass, plate, per package	1	0
Glassware. (See Earthenware.)		
Glucose, per ton gross	1	8
Glue, per package	0	6
Grain, including barley, beans, corn, dhol, gram, maize, malt, oats, peas, wheat, loose or in bags, per bushel	0	0 $\frac{3}{4}$
" in tanks. (See Iron tanks)		
Grapnels, per cwt.	0	1
Grates (castings), loose, per ton	1	8
" per package	0	6
Grindery, per package	0	9
Grindstones, each	0	1
Gunny bags, per bale or bundle	0	9
Gypsum, loose, per ton weight	1	8
" per package... ..	0	3

Wharfage and Tonnage Rates.

	s.	d.
Hardware and hollowware, including cutlery, ironmongery, axeheads, axes, hatchets, tomahawks, tools, knives and forks, scythes, swords, sheepshears, lacqueredware, lampware—		
The drum or keg	0	2
„ barrel	0	3
„ bag, bale, box, or bundle	0	4
„ case	0	6
„ crate or cask	1	0
Hair, the package	0	6
Haberdashery, per bale or case	0	9
Harps. (<i>See Musical instruments.</i>)		
Hats, the case... ..	1	0
Hams, loose, per dozen	0	2
„ in case	0	4
„ in cask	0	6
Hay, per ton	1	8
Hemp, the ton weight	1	8
Hides, per 40	1	8
Hops, per cwt., or fractional part thereof	0	3
Hoops, iron, the ton weight	1	8
„ wood, per dozen	0	2
Hollowware. As hardware. (<i>See Hardware.</i>)		
Ice, the ton weight	1	8
India-rubber goods, the package	0	9
Iron tanks, empty, of 400 gallons	2	0
„ „ 200 „	1	0
„ when filled with goods, the 400 gallons	3	6
„ „ 200 „	2	6
Iron, in bars, castings, hoop, rod, hurdles, fencing-wire, pig, pots, pipes, ovens, sheet, railway, per ton	1	8
„ galvanised, loose, or in packets, per ton	1	8
Ironmongery. (<i>See Hardware.</i>)		
Jute, per ton	1	8
Kerosene oil, per case	0	2
Liquids—Spirits, wines, cordials, the octave and under	0	2
„ quarter-casks	0	3
„ hhd.	0	6
„ puncheon	0	9
„ pipe or butt	1	0
„ leager and tun butt	1	8
„ in bottle, quarts, 2 dozen and under	0	2
„ additional for each dozen	0	1
„ pints, 4 dozen and under	0	2
„ additional for each dozen	0	0 $\frac{1}{2}$
„ geneva case	0	2
„ ale, beer, cider, perry, vinegar, firkin or kilderkin, 18 gallons and under	0	2
„ barrel	0	4
„ hhd.	0	6
„ butt	1	0
„ in bottle, quarts, 2 dozen and under	0	2
„ additional for each dozen	0	1
„ pints, 6 dozen and under	0	3
„ additional for each dozen or fractional part thereof	0	0 $\frac{1}{3}$
Lard, per package	0	2
Lampware. As hardware. (<i>See Hardware.</i>)		
Lacqueredware. As hardware. (<i>See Hardware.</i>)		

Wharfage and Tonnage Rates.

	s.	d.
Lead in bulk, roll, pipe, or package, per ton	1	8
Leather, bale, case, or bundle	0	9
Lime, per ton	1	8
Linens, the package	0	9
Lucerne seed, the bag	0	2
" the case or cask	0	4
Machinery, per ton of 20 cwt., or 40 cubic feet	1	8
Marble, in block, the ton	1	8
" manufactured, per package	0	9
Mangles, per package	0	6
Matting, the roll	0	2
Matches, per package...	0	2
Millinery, per case or bale	0	9
Millstones, per ton weight	1	8
Molasses, in casks or tanks, per ton gross	1	8
Mother-of-pearl shells, loose, the ton	1	8
" in packages, each	0	4
Musical instruments (not pianos), per package	0	9
Nails, screws, rivets, nuts, bolts, and washers, packages 112 lb. and under	0	1
Additional for each cwt. or fractional part thereof	0	1
Nuts, the bag	0	2
Nutmegs, the package	0	2
Oatmeal, per keg	0	2
" in other package	0	3
Oakum, per ton weight	1	8
Oars, loose or bundle, per dozen	0	4
" in cases, per package	0	6
Oils, fish, seal, or cocoanut, in casks, per 100 gallons	1	0
Oil-cake, per ton	1	8
Oil, castor, per case	0	2
Oilmen's and general stores—		
Anchovies	Dried fruits	Mustard
Arrowroot	Fancy soaps	Pearl barley
Brandied fruits	Groats	Pickles
Bottled fruits	Jams and jellies	Preserves
Black lead	Isinglass	Sauces
Brunswick black	Maccaroni	Salad oil
Capers	Maizena	Vermicelli
Chillies	Milk, Swiss	
Corn-flour	Milk, condensed	
Per case	...	0 2
In tanks. (See Iron tanks.)		
Oils, linseed and other oils (not fish, seal, or cocoanut)—		
" drum or keg	...	0 2
" barrel or quarter-cask	...	0 3
" hogshead...	...	0 6
" puncheon	...	0 9
" pipe	...	1 0
" tun butt	...	1 8
Onions, per cwt.	...	0 1
Ores, metallic, per ton	...	0 9
Paddy. As rice. (See Rice.)		
Paints, colours, putty, and dryers, packages of 56 lb. and under...	...	0 1
" packages from 56 lb. to 112 lb. inclusive...	...	0 2
" for each additional cwt. or fractional part	...	0 1
Paper—Paper bags, paper hangings, sand and glass paper, and mill-boards, per package	...	0 9

Wharfage and Tonnage Rates.

	s.	d.			
Pepper, the bag	0	2			
Perfumery, the case	0	9			
Pianofortes, each	2	6			
Pictures, per package ..	0	9			
Piece goods, bale or case	0	9			
Pitch and tar, the drum	0	2			
" the barrel	0	3			
Potatoes, per ton	1	8			
Provisions, beef	}				
" pork			the keg	0	2
" tongues			barrel or tierce	0	4
" tripe			hhd.	0	6
Preserved meats, per package	0	2			
Pumice stone, per package ...	0	4			
Quicksilver, per bottle	0	2			
Raisins, per 112 lb. or fractional part thereof	0	2			
" in tanks. (See Iron tanks.)					
Rattans. (See Canes.)					
Rice, per ton	1	8			
Rope, hemp, wire, and all other rope, per ton	1	8			
Saddlery, the package...	0	9			
Sago, per bag	0	2			
Salt—rock, per ton	1	3			
" in bags, per ton	1	8			
" in cask or case of 2 doz. and under	0	2			
Sarsaparilla, the case	0	2			
Sashes, window, per pair	0	1			
Seltzer or soda water, per doz.	0	1			
Shale, per ton	0	10			
Shooks, the bundle	0	2			
Shot, package 224 lb. and under	0	2			
" additional for each cwt. or fractional part	0	1			
Skins, loose, per doz.	0	2			
" in bales...	0	8			
Slops, the package	0	9			
Soap, package 112 lb. and under	0	2			
" additional each cwt.	0	1			
Soda, crystals } per package	0	4			
" caustic }					
Spades, shovels, forks, per doz.	0	2			
" " " in case or crate	1	0			
Spelter, the ton	1	8			
Starch, boxes of 56 lb. and under	0	2			
" for each additional 56 lb. or fractional part thereof	0	1			
Stationery, the package	0	9			
Steel, the ton	1	8			
Seeds, in bags, each	0	2			
" in casks or case	0	4			
Sewing machines, per package	0	4			
Spices, the package	0	2			
Silks, per package	0	9			
Sheathing metal, per cwt.	0	1			
Sugar, in mats, bags, or baskets, per ton gross	1	8			
" in casks or case, per ton gross	1	8			
Tallow, per cwt.	0	1			
Tanks. (See Iron tanks.)					
Tea, per chest	0	3			

Wharfage and Tonnage Rates.

	s.	d.
Tea, half-chest	0	1 $\frac{1}{2}$
" box	0	0 $\frac{3}{4}$
Timber, deals, deal ends, and all sawn timber, per 600 ft. superficial	1	8
" rough timber and spars, per 40 cubic feet	1	8
" laths, trenails, shingles, per 1,000	0	4
" posts and rails, per 100	1	8
" palings, per 600	1	8
" spokes, per 500	1	8
" staves, cooper's, per 100	1	8
Tobacco, manufactured, packages 112 lb. and under	0	2
" " additional for each cwt. or fractional part thereof	0	1
" in leaf, on all packages, per cwt. or fractional part thereof	0	2
Tin, per ton	1	8
Tin plates, per box	0	2
Tobacco pipes, clay, in boxes, per box	0	1
Tubs, per nest... ..	0	4
Turnery, cask, case, or package	0	9
Turpentine, per keg, drum, or case	0	2
Twine, sash lines, and halters, per package... ..	0	9
Varnish or polish, per package	0	2
Weigh-bridges. As machinery. (<i>See Machinery.</i>)		
Weighing machines, portable, per package... ..	0	9
Wire netting, loose, per roll... ..	0	2
" in package	0	8
Whaleboats and others	1	0
Whalebone, the ton	1	8
Wheelbarrows, single, each	0	2
" in packages. As Hardware. (<i>See Hardware.</i>)		
Whiting, the package... ..	0	4
Wheels, coach or cart, each	0	2
Wool, the bale	0	8
Woolpacks, per bale of 50 and under	0	8
" " of over 50 and not exceeding 100	1	0
Wool bagging, per bale	1	0
Yams, per ton... ..	1	8
Zinc, per cwt.	0	1
Undefined and unenumerated goods, heavy, to be charged weight per ton of 2,240 lb.	1	8
Undefined and unenumerated goods, light, to be charged per ton of 40 cubic feet	1	8

OUTWARD WHARFAGE RATES.

Rates not exceeding one-half of the foregoing Inward Wharfage Rates on goods shipped outwards.

When smaller packages subject to a specified rate under this tariff are enclosed or so fastened together as to form a larger package, it shall be lawful to levy the prescribed rate on each package of which the said larger package is composed, goods contained in iron tanks excepted.

When goods chargeable by weight under the foregoing tariff are in such form or so packed that the measurement tonnage exceeds the weight tonnage, it shall be lawful to charge the wharfage rate by measurement.

Wharfage and Tonnage Rates.

THIRD SCHEDULE.

Section 8.

Free lay days.

For vessels not exceeding 100 tons register	Two days.
Exceeding 100 tons and not exceeding 200 tons register	Four "
" 200	" 300	" "	Six "
" 300	" 400	" "	Eight "
And for every additional 100 tons or fractional part of 100 tons...	One day.

Excluding Sundays and public holidays in every case.

 Sydney : William Applegate Gullick, Government Printer. —1901.

[1s. 3d.]

101-6

(17 1/2)

[Faint, illegible text]

<i>[Faint text]</i>	<i>[Faint text]</i>	<i>[Faint text]</i>	<i>[Faint text]</i>	<i>[Faint text]</i>
<i>[Faint text]</i>	<i>[Faint text]</i>	<i>[Faint text]</i>	<i>[Faint text]</i>	<i>[Faint text]</i>
<i>[Faint text]</i>	<i>[Faint text]</i>	<i>[Faint text]</i>	<i>[Faint text]</i>	<i>[Faint text]</i>
<i>[Faint text]</i>	<i>[Faint text]</i>	<i>[Faint text]</i>	<i>[Faint text]</i>	<i>[Faint text]</i>
<i>[Faint text]</i>	<i>[Faint text]</i>	<i>[Faint text]</i>	<i>[Faint text]</i>	<i>[Faint text]</i>

[Faint text]

[Faint text]