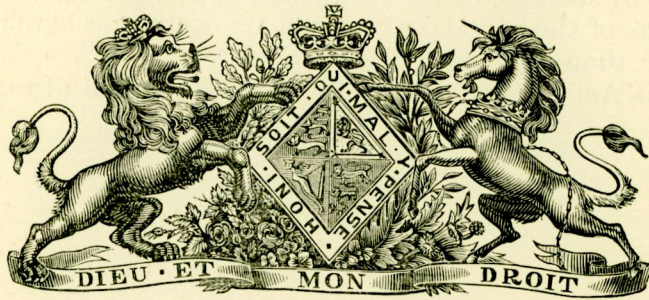


New South Wales.



ANNO SEXAGESIMO SECUNDO

VICTORIÆ REGINÆ.

\*\*\*\*\*

Act No. 39, 1898.

An Act to enable the Railway Commissioners of New South Wales to close a certain level crossing near Strathfield Railway Station, and to provide a way in substitution thereof; and to declare certain portions of that way to be a public thoroughfare. [Assented to, 24th December, 1898.]

BE it enacted by the Queen's Most Excellent Majesty, by and with the advice and consent of the Legislative Council and Legislative Assembly of New South Wales in Parliament assembled, and by the authority of the same, as follows:—

1. The Railway Commissioners of New South Wales are hereby authorised and empowered to close the level crossing over the land included within the lines of the boundary fences of the railway between Sydney and Parramatta, situate adjacent to the western end of the Strathfield platforms, and distant seven miles sixteen chains from Redfern Railway Station, and provided to give access across the railway line between the Boulevard on the southern and Everton-road and Moseley-street on the northern side of the railway at Strathfield Station.

Railway Commissioners may close level crossing.

On



*Strathfield Railway Crossing.*

On and after the publication of a notification in the Gazette by the said Commissioners that the said crossing has been closed under the authority of this Act, all rights-of-way on and over such crossing shall be extinguished.

Commissioners shall provide overhead bridge.

So much of the way outside railway fence is declared to be public thoroughfare.

Short title.

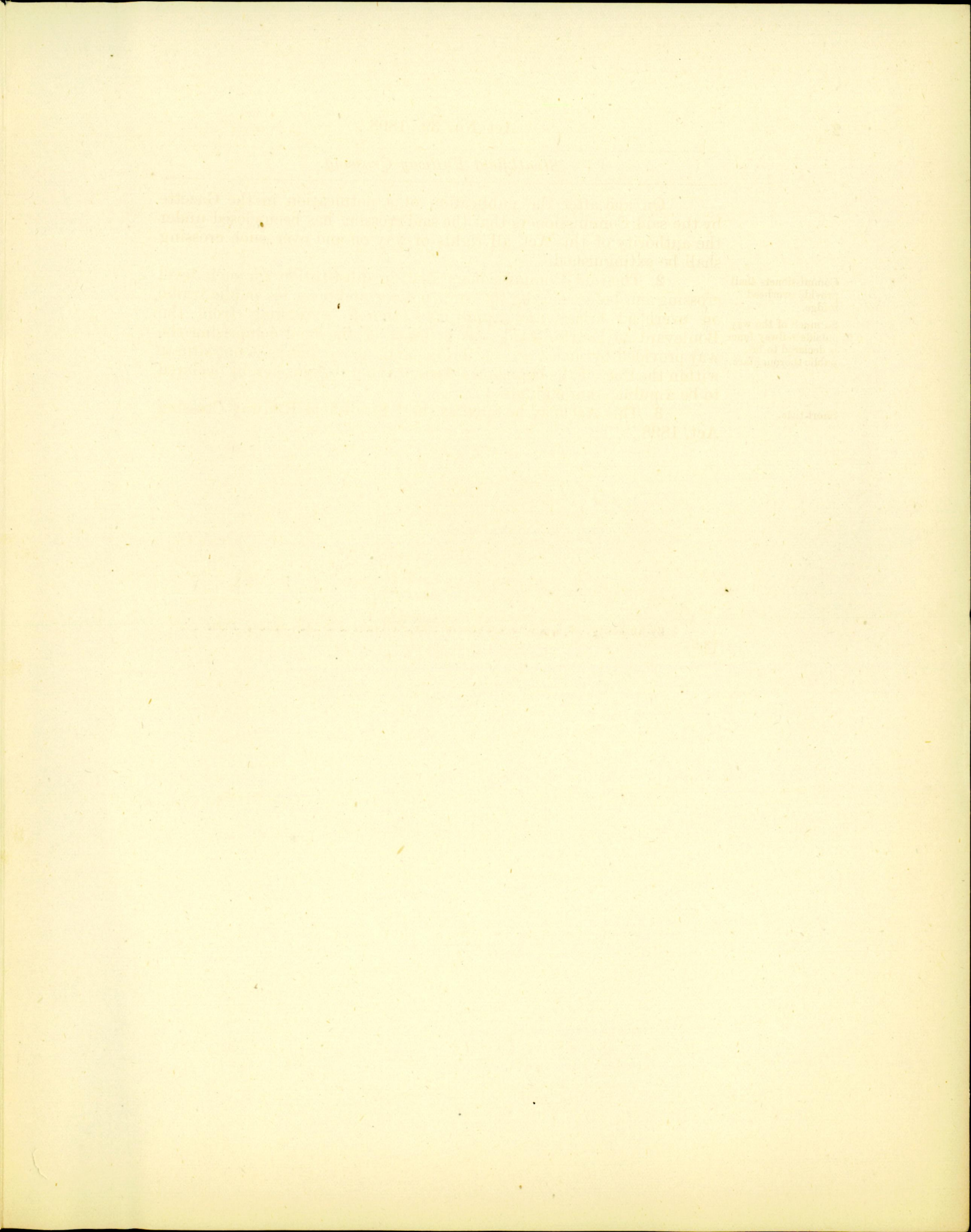
2. The said Commissioners shall in substitution for such level crossing and before closing the same provide and open for public traffic an overhead bridge and approaches thereto extending from the Boulevard to Everton-road, and so much of the land comprising the way provided by such overhead bridge and approaches as is not situate within the lines of the boundary fences of the railway is hereby declared to be a public thoroughfare.

3. This Act may be cited as the "Strathfield Railway Crossing Act, 1898."

By Authority: WILLIAM APPELATE GULLICK, Government Printer, Sydney, 1899.

[3d.]









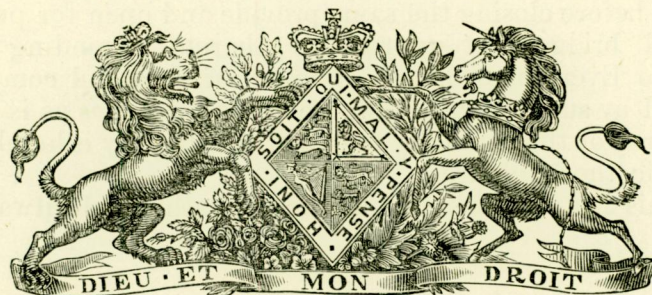


*I Certify that this PUBLIC BILL, which originated in the LEGISLATIVE ASSEMBLY, has finally passed the LEGISLATIVE COUNCIL and the LEGISLATIVE ASSEMBLY of NEW SOUTH WALES.*

*Legislative Assembly Chamber,  
Sydney, 23 December, 1898, A.M. }*

F. W. WEBB,  
*Clerk of the Legislative Assembly.*

## New South Wales.



ANNO SEXAGESIMO SECUNDO

## VICTORIÆ REGINÆ.

\*\*\*\*\*

### Act No. 39, 1898.

An Act to enable the Railway Commissioners of New South Wales to close a certain level crossing near Strathfield Railway Station, and to provide a way in substitution thereof; and to declare certain portions of that way to be a public thoroughfare. [Assented to, 24th December, 1898.]

**B**E it enacted by the Queen's Most Excellent Majesty, by and with the advice and consent of the Legislative Council and Legislative Assembly of New South Wales in Parliament assembled, and by the authority of the same, as follows:—

1. The Railway Commissioners of New South Wales are hereby authorised and empowered to close the level crossing over the land included within the lines of the boundary fences of the railway between Sydney and Parramatta, situate adjacent to the western end of the Strathfield platforms, and distant seven miles sixteen chains from Redfern Railway Station, and provided to give access across the railway line between the Boulevard on the southern and Everton-road and Moseley-street on the northern side of the railway at Strathfield Station.

Railway Commissioners may close level crossing.

On

*I have examined this Bill, and find it to correspond in all respects with the Bill as finally passed by both Houses.*

E. W. O'SULLIVAN,  
*Temporary Chairman of Committees of the Legislative Assembly.*



*Strathfield Railway Crossing.*

On and after the publication of a notification in the Gazette by the said Commissioners that the said crossing has been closed under the authority of this Act, all rights-of-way on and over such crossing shall be extinguished.

Commissioners shall provide overhead bridge.

So much of the way outside railway fence is declared to be public thoroughfare.

Short title.

2. The said Commissioners shall in substitution for such level crossing and before closing the same provide and open for public traffic an overhead bridge and approaches thereto extending from the Boulevard to Everton-road, and so much of the land comprising the way provided by such overhead bridge and approaches as is not situate within the lines of the boundary fences of the railway is hereby declared to be a public thoroughfare.

3. This Act may be cited as the "Strathfield Railway Crossing Act, 1898."

*In the name and on the behalf of Her Majesty I assent to this Act.*

*Government House,  
Sydney, 24th December, 1898.*

HAMPDEN,  
Governor.

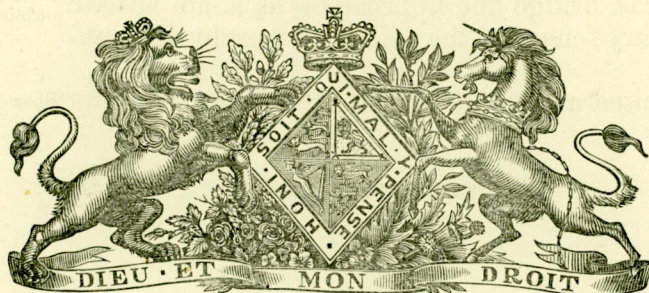


*This PUBLIC BILL originated in the LEGISLATIVE ASSEMBLY, and, having this day passed, is now ready for presentation to the LEGISLATIVE COUNCIL for its concurrence.*

*Legislative Assembly Chamber,  
Sydney, 21 December, 1898.* }

F. W. WEBB,  
*Clerk of the Legislative Assembly.*

## New South Wales.



ANNO SEXAGESIMO SECUNDO

## VICTORIÆ REGINÆ.

\*\*\*\*\*

Act No. , 1898.

An Act to enable the Railway Commissioners of New South Wales to close a certain level crossing near Strathfield Railway Station, and to provide a way in substitution thereof; and to declare certain portions of that way to be a public thoroughfare.

**B**E it enacted by the Queen's Most Excellent Majesty, by and with the advice and consent of the Legislative Council and Legislative Assembly of New South Wales in Parliament assembled, and by the authority of the same, as follows:—

- 5       1. The Railway Commissioners of New South Wales are hereby authorised and empowered to close the level crossing over the land included within the lines of the boundary fences of the railway between Sydney and Parramatta, situate adjacent to the western end of the Strathfield platforms, and distant seven miles sixteen chains from Redfern Railway Station, and provided to give access across the railway line between the Boulevard on the southern and Everton-road and Moseley-street on the northern side of the railway at Strathfield Station.
- Railway Commissioners may close level crossing.



---

*Strathfield Railway Crossing.*

---

On and after the publication of a notification in the Gazette by the said Commissioners that the said crossing has been closed under the authority of this Act, all rights-of-way on and over such crossing shall be extinguished.

5       **2.** The said Commissioners shall in substitution for such level crossing and before closing the same provide and open for public traffic an overhead bridge and approaches thereto extending from the Boulevard to Everton-road, and so much of the land comprising the way provided by such overhead bridge and approaches as is not situate  
10 within the lines of the boundary fences of the railway is hereby declared to be a public thoroughfare.

Commissioners shall provide overhead bridge.

So much of the way outside railway fence is declared to be public thoroughfare.

**3.** This Act may be cited as the "Strathfield Railway Crossing Act, 1898." Short title.