

*I certify that this PUBLIC BILL, which originated in the LEGISLATIVE ASSEMBLY, has finally passed the LEGISLATIVE COUNCIL and the LEGISLATIVE ASSEMBLY of NEW SOUTH WALES.*

W. S. MOWLE,  
*Acting Clerk of the Legislative Assembly*  
*Legislative Assembly Chamber,*  
*Sydney, 13 April, 1916.*

**New South Wales.**



ANNO SEXTO

**GEORGII V REGIS.**

\*\*\*\*\*

**Act No. 27, 1916.**

An Act to sanction the carrying out of a scheme of water supply for the municipality of Yass; and for purposes consequent thereon and incidental thereto. [Assented to, 19th April, 1916.]

**W**HEREAS, in accordance with the provisions of <sup>Preamble.</sup> the Public Works Act, 1912, the Legislative Assembly did, by resolution, declare that it was expedient to carry out a certain work, namely, a scheme of water supply for the municipality of Yass: And whereas, on the passing of the said resolution, a statutory duty was by the said Act imposed on the Minister to introduce

*I have examined this Bill, and find it to correspond in all respects with the Bill as finally passed by both Houses.*

THOS. H. THROWER,  
*Chairman of Committees of the Legislative Assembly.*

*Yass Water Supply.*

introduce a Bill into the said Assembly to sanction the carrying out of the said work: Be it therefore enacted by the King's Most Excellent Majesty, by and with the advice and consent of the Legislative Council and Legislative Assembly of New South Wales in Parliament assembled, and by the authority of the same, as follows:—

Short title. **1.** This Act may be cited as the "Yass Water Supply Act, 1916."

Work sanctioned. **2.** The carrying out the said works more particularly described in the Schedule to this Act is hereby sanctioned; and the Minister for Public Works, or the member of the Executive Council for the time being performing the duties of the said Minister, is hereby authorised to undertake and carry out the said works, subject to the provisions of this Act, and for that purpose shall be, and shall have the powers of, a Constructing Authority within the meaning of the Public Works Act, 1912.

The plan. **3.** The plan of the said works is the plan marked "The Yass Water Supply Works," signed by the Minister for Public Works, and countersigned by the Chief Engineer for Water Supply and Sewerage, and deposited in the public office of the said Minister.

Cost, and how to be defrayed. **4.** The cost of carrying out the said works, estimated at thirty-seven thousand six hundred and forty pounds (exclusive of land resumptions), may be defrayed from such Loan Votes as are now or may hereafter be applicable to the purpose, or from appropriations of the Public Works Fund, or partly from such votes and partly from such appropriations, and shall not under any circumstances exceed the estimated cost by more than ten per centum.

SCHEDULE.

---

*Yass Water Supply.*

---

SCHEDULE.

THE construction of a concrete weir across the Yass River above the road bridge at Yass Town; suction main, pump-well, pumping machinery, engine-house, rising main, service reservoirs, main to Yass junction, service mains and reticulation, filtration plant, coagulant plant, lines for transmission of electric current for power telephone and signalling purposes; and works connected therewith.

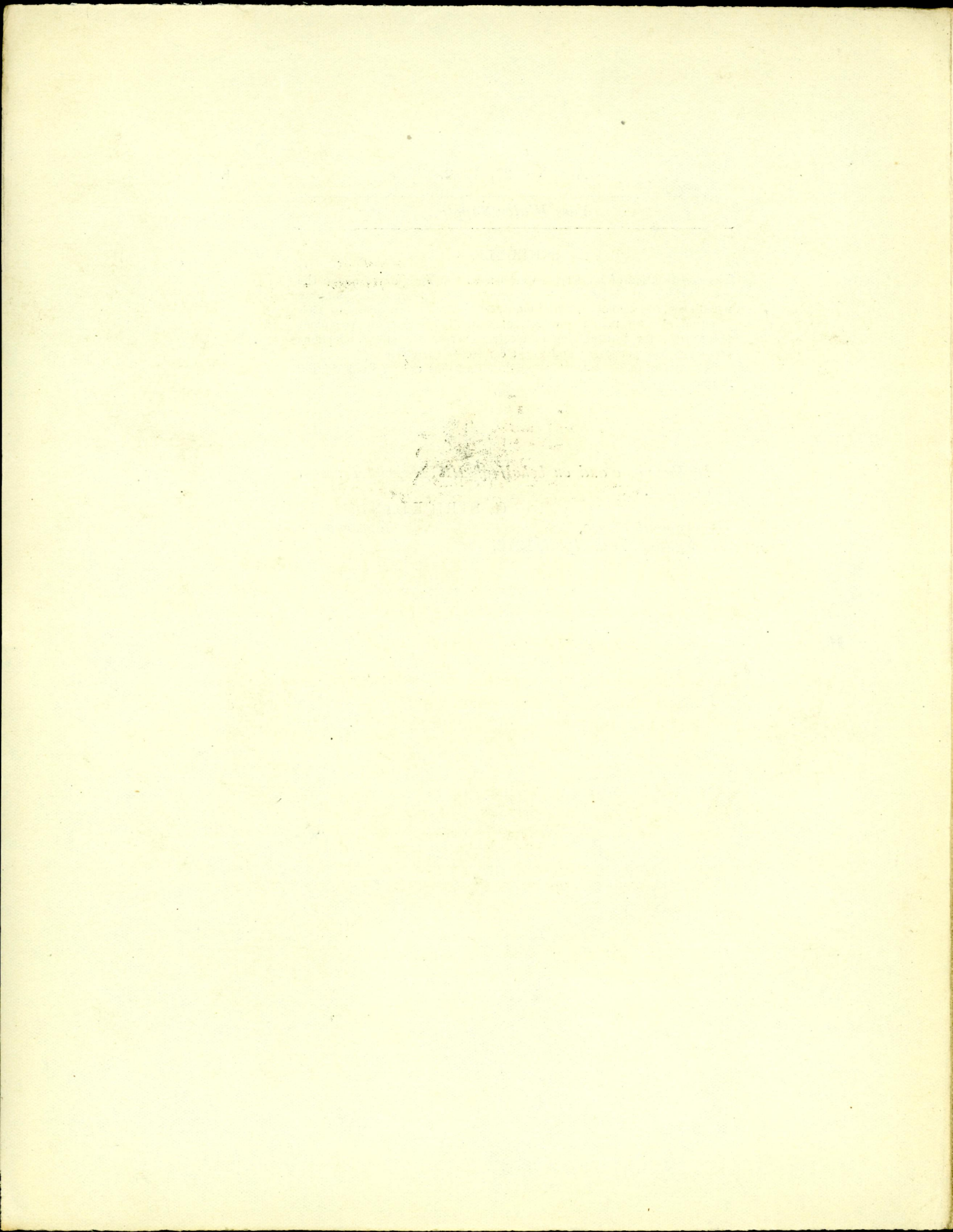
The above to be subject to such alterations as the Constructing Authority may think desirable.

*In the name and on behalf of His Majesty I assent to this Act.*

G. STRICKLAND,

*Government House,  
Sydney, 19th April, 1916.*

*Governor.*



*This PUBLIC BILL originated in the LEGISLATIVE ASSEMBLY; and, having this day passed, is now ready for presentation to the LEGISLATIVE COUNCIL for its concurrence.*

W. S. MOWLE,  
*Acting Clerk of the Legislative Assembly.*

*Legislative Assembly Chamber,  
Sydney, 7 April, 1916, A.M.*

## New South Wales.



ANNO SEXTO

## GEORGI V REGIS.

\*\*\*\*\*

Act No. , 1916.

**An Act** to sanction the carrying out of a scheme of water supply for the municipality of Yass; and for purposes consequent thereon and incidental thereto.

**W**HEREAS, in accordance with the provisions of <sup>Preamble.</sup> the Public Works Act, 1912, the Legislative Assembly did, by resolution, declare that it was expedient to carry out a certain work, namely, a scheme of water supply for the municipality of Yass: And whereas, on the passing of the said resolution, a statutory duty was by the said Act imposed on the Minister to introduce

*Yass Water Supply.*

introduce a Bill into the said Assembly to sanction the carrying out of the said work: Be it therefore enacted by the King's Most Excellent Majesty, by and with the advice and consent of the Legislative Council and Legislative Assembly of New South Wales in Parliament assembled, and by the authority of the same, as follows:—

1. This Act may be cited as the "Yass Water Supply Act, 1916." Short title.
2. The carrying out the said works more particularly described in the Schedule to this Act is hereby sanctioned; and the Minister for Public Works, or the member of the Executive Council for the time being performing the duties of the said Minister, is hereby authorised to undertake and carry out the said works, subject to the provisions of this Act, and for that purpose shall be, and shall have the powers of, a Constructing Authority within the meaning of the Public Works Act, 1912. Work sanctioned.
3. The plan of the said works is the plan marked "The Yass Water Supply Works," signed by the Minister for Public Works, and countersigned by the Chief Engineer for Water Supply and Sewerage, and deposited in the public office of the said Minister. The plan.
4. The cost of carrying out the said works, estimated at thirty-seven thousand six hundred and forty pounds (exclusive of land resumptions), may be defrayed from such Loan Votes as are now or may hereafter be applicable to the purpose, or from appropriations of the Public Works Fund, or partly from such votes and partly from such appropriations, and shall not under any circumstances exceed the estimated cost by more than ten per centum. Cost, and how to be defrayed.

---

*Yass Water Supply.*

---

SCHEDULE.

THE construction of a concrete weir across the Yass River above the road bridge at Yass Town; suction main, pump-well, pumping machinery, engine-house, rising main, service reservoirs, main to Yass junction, service mains and reticulation, filtration plant, coagulant plant, lines for transmission of electric current for power telephone and signalling purposes; and works connected therewith.

The above to be subject to such alterations as the Constructing Authority may think desirable.

The Board of Directors of the American  
and British...  
...to the...

MEMORANDUM

...to the Board of Directors...  
...of the American and British...  
...to the...

MEMORANDUM

...to the Board of Directors...  
...of the American and British...  
...to the...

...to the Board of Directors...  
...of the American and British...  
...to the...