

Plan your public  
tour visit of  
Parliament of NSW

---



## Booking your public tour

---

See where laws are made. Sit in the chambers on the same benches as the Members of Parliament.

Join us **every Monday and Friday at 1.30pm** for a free one-hour guided tour, and step back in time into one of Australia's oldest public buildings still in continuous use.

During school holidays, the public tour is available Monday – Thursday at 11.30am and 1.30pm, and Friday at 1.30pm.

While walk-ins are always welcome, we recommend you [book in advance](#) to obtain your preferred date and time slot.

Booking for a bigger group? Bring your colleagues, friends, society or group. Our accessible precinct can also cater for additional accessibility needs.

Give us a call on **(02) 9230 3444** to book a bespoke tour if your party is larger than 10 people.



## Contact details

---

### Opening hours

Monday – Friday 9:00am – 5:00pm

### Public and School Tours Team

(02) 9230 3444

### Email

[tours@parliament.nsw.gov.au](mailto:tours@parliament.nsw.gov.au)

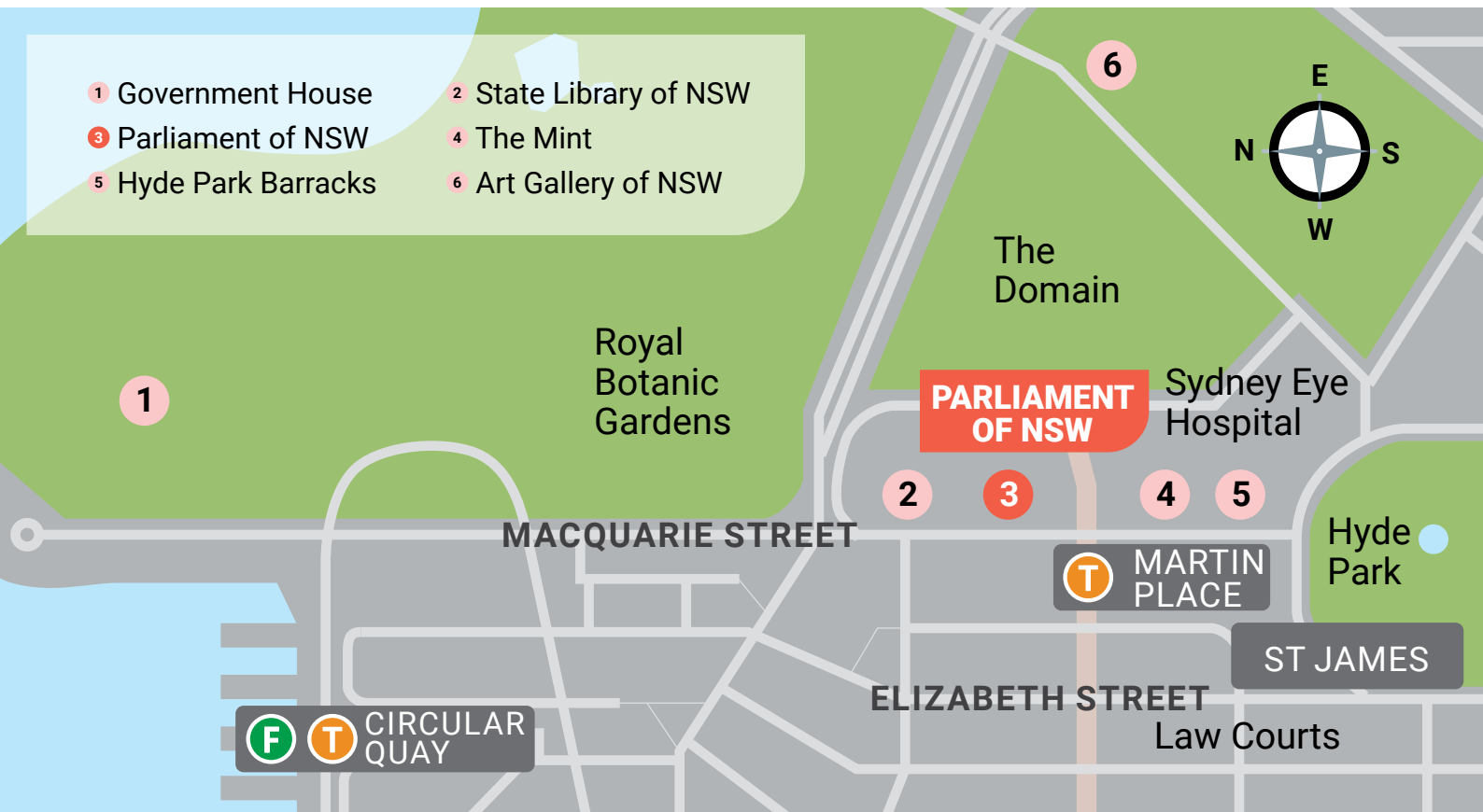
[BOOK HERE](#)



## Getting here

New South Wales Parliament House is located on Macquarie Street, between Sydney Hospital and the State Library. When you arrive, entry is via the security gatehouse. Please then head up the front steps or use the ramp and lift to our reception area, where the tour meets.

[CLICK HERE TO VIEW ON GOOGLE MAPS](#)







#### Street address

6 Macquarie Street, Sydney NSW 2000.

#### Public transport

The nearest train stations are Martin Place and St James.

Buses run from Macquarie, Elizabeth and Castlereagh streets.

Route numbers: 200, 309, 324, 325, 326, 327, 333, 339, 343, 373, 374, 376, 377, 380, 389, 391, 392, 394, 396, 397 and 399 service the area.

Plan your trip with [Trip Planner](#).

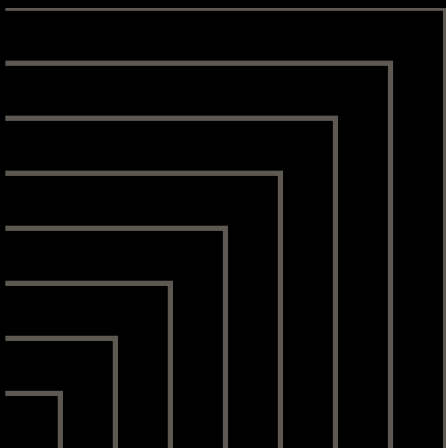
#### Parking

Car parking is not generally available at Parliament House. Nearby public car parks are located at:

- Cook and Phillip Park (access via Cathedral Street)
- The Domain (access via St Marys Road)
- Sydney Hospital next door to Parliament House (access via Hospital Road).

#### Coach access

Buses may stop briefly to set down visitors at the footpath on Macquarie Street adjacent to Parliament House.



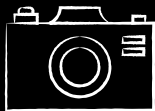




## Food and drink

Food and drink are not allowed in the chambers.

For a light option you can enjoy our locally roasted coffee and NSW teas in our Public Café.



You're welcome to bring your camera to take photos of your visit.

The public are welcome to have lunch in our award-winning Strangers' Restaurant which showcases food and wine from regions across NSW.

Call us to book your table on **(02) 9230 2124** or visit Strangers' website and book online.

[BOOK HERE](#)

## Accessibility

All visitors enter Parliament from Macquarie Street via a security screening station, similar to what you might experience at a regional airport. If you have accessibility requirements that affect how you undergo security screening, please advise the security officers when you arrive.

### Wheelchair and mobility disability

There is ramp and lift access from the Macquarie Street entrance to reception located on level seven.

Once inside, Parliament House has flat access to both the Legislative Council and Legislative Assembly chambers, the Macquarie, Jubilee, McKell and Preston Stanley rooms, the Public Café and Strangers' Restaurant. There are accessible lifts from reception on level seven, and the Theatrette on level six. The carpets in Parliament House are short, with dense pile.

### Blind/visually impaired

There is signage with raised lettering in some areas of the publicly accessible areas of Parliament House.

### Hearing-impaired, deaf, deaf-blind

Parliament House has fitted induction loops in the Visitors' Galleries of the Legislative Assembly and Legislative Council Chambers, Macquarie Room, Jubilee Room, McKell Room, Preston Stanley Room, Strangers' Restaurant, Education Centre and Parliamentary Theatrette.

### Accessible toilets

There are accessible public toilets located on levels six and seven at Parliament House.

A Changing Places facility is also available on level six. This is designed to be completely accessible and provides sufficient space and equipment for people who are not able to use the toilet independently.

### Guide dogs and assistance animals

We welcome guide dogs and other assistance animals at Parliament House. Please have your animal's accreditation pass available to present to staff on entry.

### Facilities for parents

There is a baby change room on level seven with comfortable chairs, a change table, a sink and a microwave.

### Parking for people with disabilities

Please be aware there is no disability parking available for the general public attending tours at NSW Parliament House.







## Venue and safety information

Parliament House has public liability cover, emergency procedures, emergency trained staff, a first aid room and trained first aid officers.

Parliament House staff delivering tours have their *Working with Children Check*.

## Gift shop

Located within the Public Café behind the central fountain.

Open Monday to Friday from 9:30am to 4:00pm.

The gift shop stocks an incredible range of items sourced from local farmers, designers and artists.

Items include a selection of:

- soy candles
- raw honey
- artisan chocolates
- organic skincare products
- handcrafted ceramics
- stationery items
- rural postcards
- parliamentary books, and
- locally designed indigenous products.



[VISIT THE ONLINE GIFT SHOP](#)

What's on at Parliament

[View the Fountain Court exhibition schedule](#)

[Find out more about our events](#)

[Visit the Reconciliation Wall](#)

