

The Hon Tara Moriarty MLC  
Minister for Agriculture  
Minister for Regional New South Wales  
Minister for Western New South Wales



**LEGISLATIVE COUNCIL**  
**SUPPLEMENTARY QUESTIONS FOR WRITTEN ANSWERS**

**QUESTION:**

**The Hon. SAM FARRAWAY (12:01):**

My supplementary question for written answer is directed to the Minister for Regional New South Wales.

Will the Minister supply to the Parliament a copy of the map of the Great Koala National Park that was shown and presented at the steering committee meeting?

**ANSWER:**

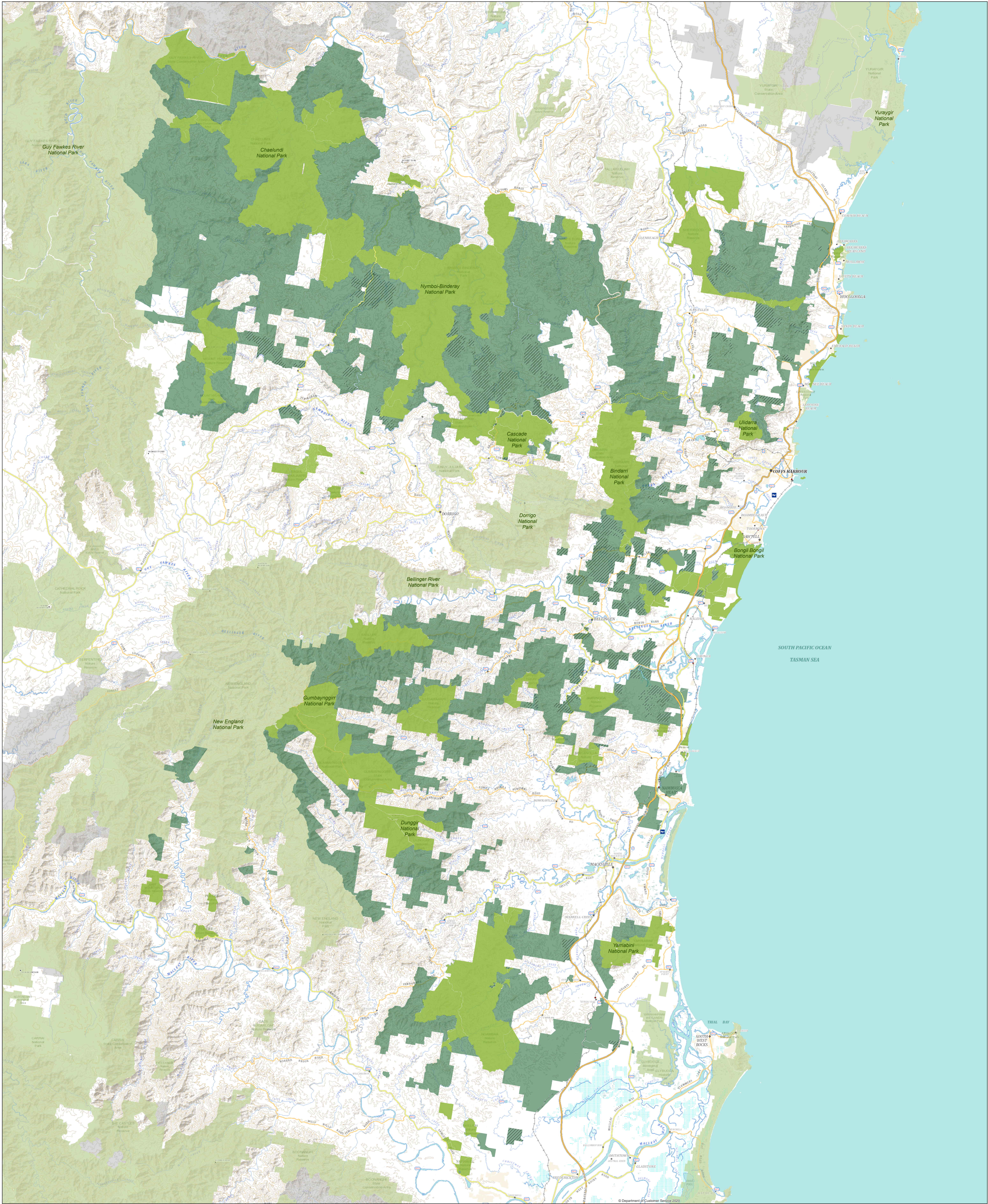
Delivery of the Great Koala National Park is the responsibility of the Minister for the Environment.

However, for the benefit of the Hon. Member, a copy of the map that I am advised was presented to the steering committee is attached.

A handwritten signature in blue ink, consisting of a large loop followed by a long, sweeping horizontal line.

**Tara Moriarty MLC**

Minister for Agriculture  
Minister for Regional New South Wales  
Minister for Western New South Wales



- Plantation (FMZ 5 & 6) within assessment area
- State forest within assessment area
- State forest outside assessment area
- NPWS estate within assessment area
- NPWS estate outside assessment area

## Great Koala National Park Assessment Area

**Note: this map is intended for assessment purposes only. It may be refined and enhanced over time to improve its accuracy, verify boundaries, and correct errors and anomalies. The actual footprint of the GKNP will be determined as part of the comprehensive establishment and engagement process outlined by the Minister for the Environment on 12 September 2023**

Copyright of Department of Planning and Environment.  
This map is not guaranteed to be free from error or omission. The Department and its employees disclaim liability for any act done on the information in the map and any consequences of such acts or omissions.

